

**TIM PRIEST**  
**Petroleum Geologist**  
 (316)-213-6115

**GEOLOGIST'S REPORT**  
**DRILLING TIME AND SAMPLE LOG**

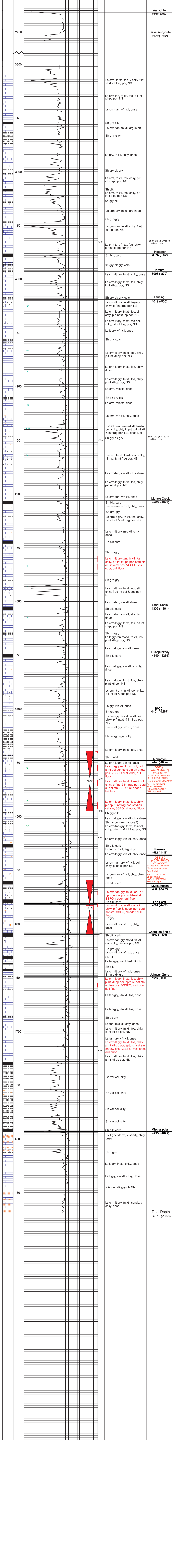
COMPANY <b>SHAKESPEAR OIL CO.</b>	ELEVATIONS KG 3114'
LEASE <b>JANKIN 2-35</b>	DF _____
FIELD <b>Wildecat</b>	GL 3106'
LOCATION <b>600 FNL, 33.5° FEL</b>	Measurements Are All From <b>KB</b>
SEC <b>35 TMSF 16S ROE 34W</b>	
COUNTY <b>Scott STATE Kansas</b>	
CONTRACTOR <b>Duke Drilling Rig #2</b>	
SPUD <b>12-2-17 COMP</b>	
RTD <b>3700'</b> LTD <b>3700'</b>	CASING CONDUCTION <b>N/A</b>
MUD UP <b>3700'</b> TYPE MUD <b>Chemical</b>	SURFACE <b>8-5/8" @ 264'</b>
SAMPLES SAVED FROM <b>3800'</b> to RTD	PRODUCTION <b>4 1/2" @ 4850'</b>
DRILLING TIME KEPT FROM <b>3800'</b> to RTD	
SAMPLES EXAMINED FROM <b>3800'</b> to RTD	ELECTRICAL SURVEYS <b>CND/D/SP/PE</b>
GEOLOGICAL SUPERVISION FROM <b>3800'</b> to RTD	GEOLOGIST ON WELL <b>Tim Priest</b> By: <b>Micro</b>
FORMATION TOPS	ELECTRIC LOG
Anhydrite	SAMPLE
Heebner Shale	
Lansing	
SARC	
Fort Scott	
Cherokee Shale	
Mississippian	

REMARKS

Respectfully Submitted,

**API #15-171-21210-00-00**

**Tim Priest**  
 Petroleum Geologist



**Total Depth 4870 (-1756)**