

Sean Deenihan

Petroleum Geologist

GEOLOGIST'S REPORT DRILLING TIME AND SAMPLE LOG

COMPANY **Triple Crown Operating, LLC**
LEASE **Keilman #1A**

FIELD **Wildcat**
LOCATION **330° FSL & 1800° FEL**
SEC **30** TWSP **17 S** RGE **24 W**
COUNTY **Ness** STATE **Kansas**

CONTRACTOR **W.W. Drilling Rig #4**
SPUD **6/5/17** COMP **6/12/16**
RTD **4460'** LTD **4462'**
MUD UP **3200'** TYPE MUD **Chemical**

SAMPLES SAVED FROM **3500'** TO **RTD**
DRILLING TIME KEPT FROM **3500'** TO **RTD**
SAMPLES EXAMINED FROM **3500'** TO **RTD**

GEOLOGICAL SUPERVISION FROM **3700'**
REFERENCE WELL **Schaben B1**

ELEVATIONS
KB **2391'**
DF _____
GL **2386'**
Measurements Are All From Kelly Bushing

CASING
CONDUCTOR _____
SURFACE **8-5/8"** at **348'**
PRODUCTION **5.5"** @ **TD**

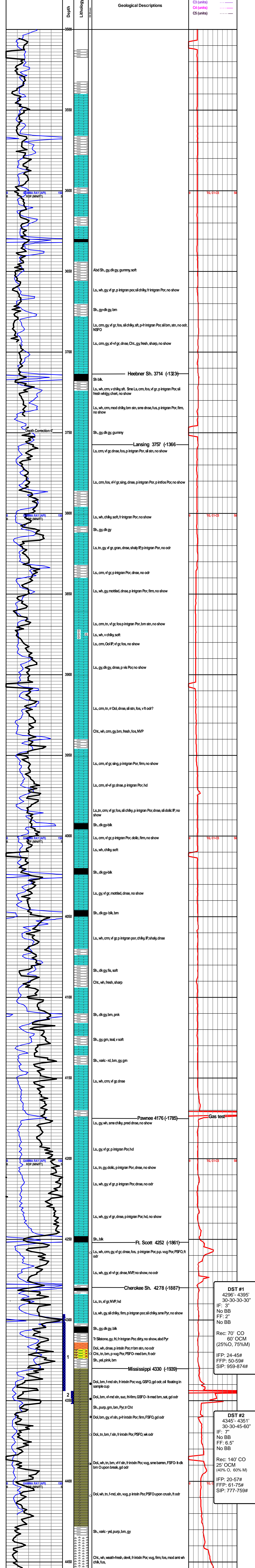
ELECTRICAL SURVEYS
Gemini
CND/DIL MIC

Formation	Sample Tops	E-log Tops	Struct Pos.
B/Amb/drite		1686 (+705)	
Heebner Sh.		3714 (-1323)	
Lansing		3757 (-1366)	
Marraton		4092 (-1701)	
Ft. Scott		4252 (-1861)	
Cherokee Sh.		4278 (-1887)	
Mississippi		4330 (-1939)	

REMARKS Based on sample, log, and DST analysis, the Keilman #1A will be further evaluated through production casing.

Respectfully Submitted,

Sean P. Deenihan



DST #1
4296'- 4395'
30-30-30-30"
IF: 3"
No BB
FF: 2"
No BB
Rec: 70' CO
60' OCM
(25% O, 75% M)
IFF: 24-45#
FFP: 50-59#
SIP: 959-874#

DST #2
4345'- 4351'
30-30-45-60"
IF: 7"
No BB
FF: 6.5"
No BB
Rec: 140' CO
25' OCM
(40% O, 60% M)
IFF: 20-57#
FFP: 61-75#
SIP: 777-759#