

Well Name: Allender #1-26
 Surface Location: Sec. 26 - T24S - R13W
 Bottom Location: 15-185-240-01-0000
 License Number: 34434
 Spud Date: 11/6/2017
 Region: State of Kansas
 Drilling Completed: 11/14/2017
 Time: 5:00 PM
 Surface Coordinates: 378 FNL & 1174 FWL
 Bottom Hole Coordinates: 1914.00H
 K.B. Elevation: 1923.00H
 Logged Interval: 2900.00H To: 4175.00H
 Total Depth: 4175.00H
 Formation: Arbuckle
 Drilling Fluid Type: Chemical/Fresh Water Gel

OPERATOR
 Company: Edison Operating Company LLC
 Address: 8100 E 22nd St. North
 Building 1900
 Wichita, KS 67226
 Contact Geologist: David WWS
 Phone Nbr: 316.613.1544
 Well Name: Allender #1-26
 Location: Sec. 26 - T24S - R13W
 License #: 34434
 Pool: Allender
 State: Kansas
 Field: St. John
 Country: USA

LOGGED BY
 Company: Edison Operating Company LLC
 Address: 8100 E 22nd St. North
 Building 1900
 Wichita, KS 67226
 Phone Nbr: 316.655.0550
 Logged By: Geologist Name: Derek W. Patterson

REMARKS
 After review of the geologic log, DST results, and open hole logs for the Allender #1-26, it was decided upon by operator to run 5 1/2" production casing for further evaluation of said well.
 The well samples were saved, submitted, and will be available for review at the Kansas Geological Survey's Well Sample Library located in Wichita, KS.
 Respectfully Submitted,
Derek W. Patterson

GENERAL INFORMATION
 Drilling Contractor: Southwind Drilling - Rig 99
 Tool Pusher: Wes Pfaff
 Daylight Driller: Derek Petz
 Evening Driller: Rocky Rojas
 Morning Driller: Travis Eise
 Logging Company: Eli Wireline
 Loggers: Gus Planenski
 Engineers: DI, CDNL, Micro, Sonic
 Gas Detector: Bluestem Environmental
 Engineer: Keith Reavis
 Unit: 5259
 Operational By: 1950'
 Testing Company: Diamond Testing
 Tester: Ricky Ray

Deviation Survey				Pipe Survey				Pipe Strap			
Depth	412'	Survey	314'	Depth	3622'	Pipe Strap	3622'	Depth	3622'	Pipe Strap	0.97
412'	3622'	1.14'	3.4"	3622'	3622'	3180'	4175'	3622'	4175'	553'	Long to Board
RTD - 4176'				3.4"							

Bit #	Size	Make	RPD	Serial Number	Depth In	Depth Out	Feet	Hours
1	12 1/4"	Javel	RR	RR	0'	442'	442'	4.5
2	7 7/8"	Javel	HCPZ	1547893	442'	3622'	3180'	71.75
3	7 7/8"	Val	HC29	1701621	3622'	4175'	553'	36.00

Surface Casing
 11.6.2017 Ran 10 joints of new 2 3/8" 5.8" surface casing, tallying 431', set @ 442' KB. Cemented with 30' 30s 60/40 Poz. 3% cc, 2% gel, 1# 4 #/ss Rocell. Cement did circulate. Plug down @ 009' hrs 11.17. By Basic Energy Services.

Production Casing
 11.15.2017 Ran 97 joints of new 5 1/2" production casing, tallying 4172.83', set @ 4173' KB. Cemented with 17' 5s 30s AA-2. Cement did circulate. Plug down @ 1245 hrs 11.15. By Basic Energy Services.

DAILY DRILLING REPORT

11.11.2017 3622'
 Drilling and connections open. Phenolic washers. Geologist Derek W. Patterson on location 0930 hrs 11.10. 17. Reset Bloodhound and test systems. Drilling and connections TOPEKA. Heebner, Toronto, Douglas, and into Brown Line. Short trip @ 3542'. 1920 hrs 11.10.17. Conduct 15 stand short trip, CTCH. Resume drilling following short trip. 2115 hrs 11.10.17. Drilling and connections Brown Line and into Lansing-Kansas City. CFS @ 3590' (LKC B). Resume drilling and connections Lansing-KC. CFS @ 3622' (LKC D/E). Rig down during circulation to repair leak in pump line.
 Made 319' over past 24 hrs of operations.
 WOB: 32k RPM: 80 PP: 1100 SPM: 60
 DMC: \$1,420.73 CMC: \$7,887.26

11.12.2017 3634'
 Replace line pack. Shows warrant test. TTH with bit, CTCH drop survey; set up for DST #1. 0800 hrs 11.11.17. Rig up tester, make up tool, TTH with bit. Conduct DST #1, test successful. TTH with new bit, run in premix, CTCH. Resume drilling following DST #1, 0245 hrs 11.11.17. Drilling Lansing-KC. CFS @ 3634' (LKC F). Shows warrant test. CTCH, TOH for DST #2. 2315 hrs 11.11.17. Make up tool, TTH with tool. Conducting DST #2.
 Made 12' over past 24 hrs of operations.
 WOB: 32k RPM: 80 PP: 1100 SPM: 60
 DMC: \$1,478.08 CMC: \$5,767.88

11.13.2017 3688'
 Conducting DST #2; test successful. TTH with bit, CTCH. Resume drilling following DST #2, 1050 hrs 11.12.17. Drilling and connections Lansing-KC. CFS @ 3727' (LKC G). Resume drilling and connections Lansing-KC. CFS @ 3727' (LKC K). Shows warrant test. CTCH, TOH for DST #3, 0130 hrs 11.14.17. Make up tool, TTH with tool. Conducting DST #3.
 Made 229' over past 24 hrs of operations.
 WOB: 32k RPM: 80 PP: 1100 SPM: 60
 DMC: \$1,989.69 CMC: \$3,988.57

11.14.2017 4097'
 Drilling and connections Marmaton, Kinderhook, Viola, Simpson, and into Arbuckle. CFS @ 4094' (Arb). CFS 4097' (Arb). Shows warrant test. CTCH, TOH for DST #3, 0130 hrs 11.14.17. Make up tool, TTH with tool. Conducting DST #3.
 Made 229' over past 24 hrs of operations.
 WOB: 32k RPM: 80 PP: 920 SPM: 60
 DMC: \$1,420.73 CMC: \$7,887.26

11.15.2017 RTD - 4175' LTD - 4176'
 Conducting DST #3; test successful. TTH with bit, CTCH. Resume drilling following DST #3, 1400 hrs 11.14.17. Drilling and connections above to RTD @ 4175'.
 RTD reached 1745 hrs 11.14.17. CTCH, drop survey, TOH for open hole logging operations, 1930 hrs 11.14.17. Rig up loggers, connections open hole logging operations, 2100 hrs 11.15.17. Open hole logging operations completed, 0130 hrs 11.15.17. Decision made to run 5 1/2" production casing for further evaluation of the Arbuckle and multiple Lansing-Kansas City zones.
 Geologist Derek W. Patterson released and off location, 0000 hrs 11.14.17.
 Made 78' over past 24 hrs of operations.
 WOB: 32k RPM: 80 PP: 920 SPM: 60
 DMC: \$3,300.42 CMC: \$7,967.76

WELL COMPARISON SHEET

Edison Operating Allender #1-26	Root Energy Allender #1-26	Martin Drilling Co. M-1489	Edison Operating Allender #1-26
Sec. 26 - T24S - R13W 378 FNL & 1174 FWL	Sec. 26 - T24S - R13W 378 FNL & 1174 FWL	Sec. 27 - T24S - R13W 378 FNL & 1174 FWL	Sec. 26 - T24S - R13W 378 FNL & 1174 FWL
1994 3065 3172 3275 3382 3395 3418 3521 3551 3554 3626 3643 3684 3689 3718 3750 3758 3791 3824 3828 3848 3849 4044 4049 4083 4175	1994 3065 3172 3275 3382 3395 3418 3521 3551 3554 3626 3643 3684 3689 3718 3750 3758 3791 3824 3828 3848 3849 4044 4049 4083 4175	1994 3065 3172 3275 3382 3395 3418 3521 3551 3554 3626 3643 3684 3689 3718 3750 3758 3791 3824 3828 3848 3849 4044 4049 4083 4175	1994 3065 3172 3275 3382 3395 3418 3521 3551 3554 3626 3643 3684 3689 3718 3750 3758 3791 3824 3828 3848 3849 4044 4049 4083 4175

ROCK TYPES

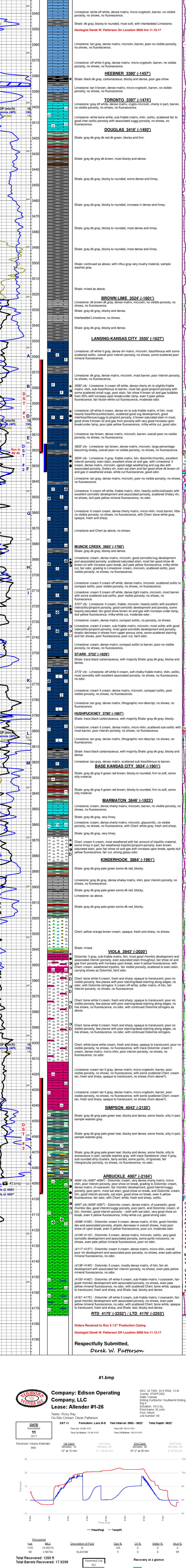
Color	Rock Type	Color	Rock Type
Light Blue	LMS1	Light Green	SHALE GRN
Dark Blue	LMS2	Dark Green	SHALE GRN
Light Purple	LMS3	Light Yellow	SHALE YEL
Dark Purple	LMS4	Dark Yellow	SHALE YEL
Light Red	SHALE BRN	Light Blue	SHALE RED
Dark Red	SHALE BRN	Dark Blue	SHALE RED
Light Green	SHALE GRN	Light Yellow	SHALE TEA
Dark Green	SHALE GRN	Dark Yellow	SHALE TEA

ACCESSORIES

Symbol	Description
Blue line	STRINGER
Red line	TEXTURE
Green line	MINERAL
Yellow line	FOSSIL
Purple line	MISC

OTHER SYMBOLS

Symbol	Description
Blue box	DST
Red box	DST
Green box	DST
Yellow box	DST
Purple box	DST



Respectfully Submitted,
Derek W. Patterson

#1.bmp

EDISON OPERATING COMPANY, LLC
 Lease: Allender #1-26
 Tester: Ricky Ray
 On-Site Contact: Derek Patterson

