

# ADVANTAGE ELEVATIONS

OIL FIELD SURVEYORS

BOX 8604 - PRATT, KS 67124  
(620) 672-6491

1229172  
INVOICE NO.

FALCON EXPLORATION INC  
OPERATOR

1-6(SW)  
NO.

RILEY WINKLER  
FARM

GRAY  
COUNTY

6 28s 29w  
S T R

NE NE SW  
LOCATION

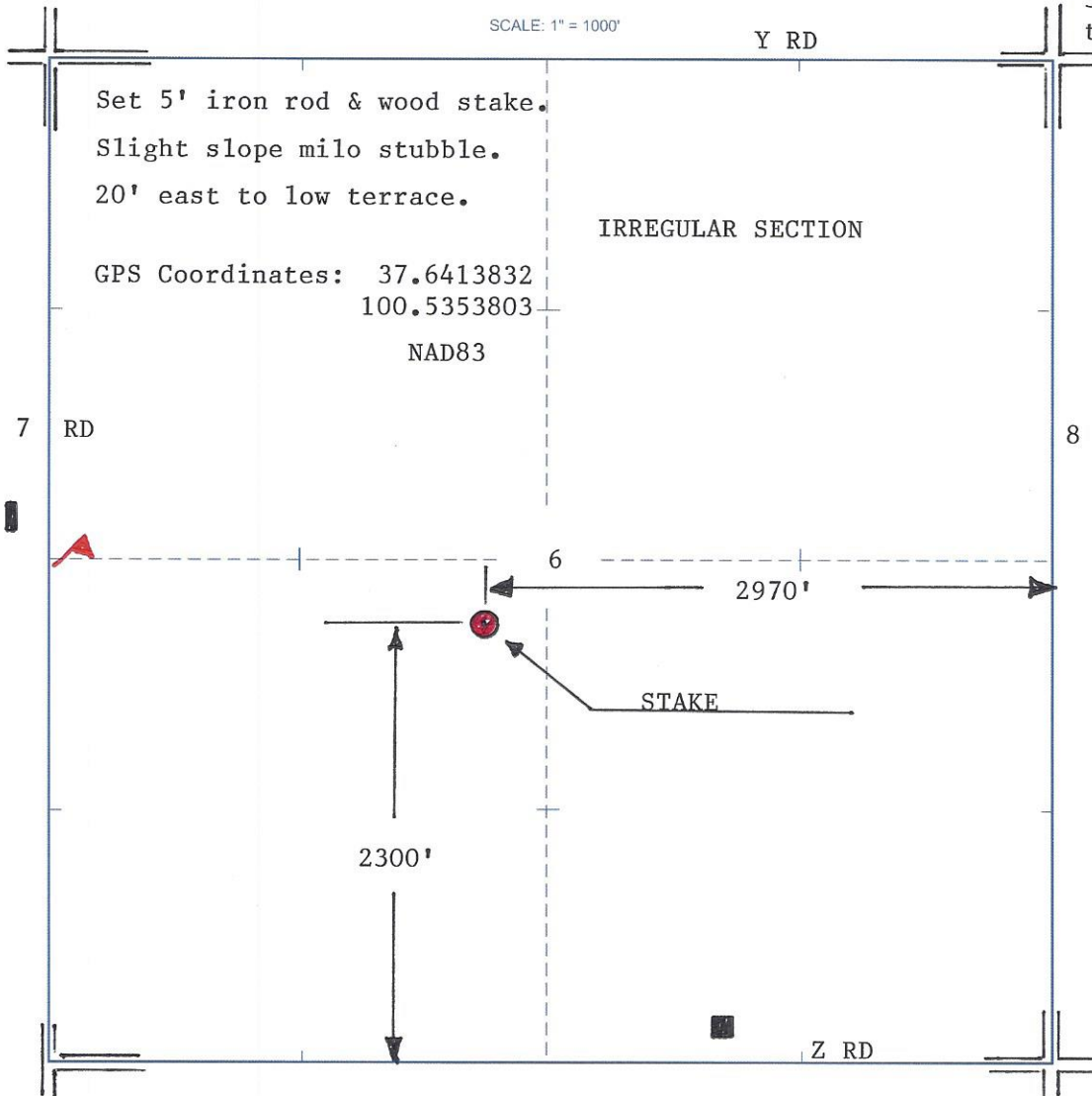
ELEVATION: 2787' GR



FALCON EXPLORATION INC  
125 N Market St. Ste 1252  
Wichita, KS 67202

AUTHORIZED BY: Cynde Wolf

4 mi. east,  
3½ mi. south  
to Montezuma,  
KS



DATE STAKED: 12/29/17