



## Cement Job Summary

Job Number: <b>LIB1709270528</b>		Job Purpose: <b>01 Surface</b>	
Customer: <b>H2Oil</b>	Date: <b>9/27/2017</b>		
Well Name: <b>Wagner Unit</b>	Number: <b>1 WSW</b>	API/UWI: <b>15-165-22152</b>	
County: <b>Rush</b>	City: <b>Great bend</b>	State: <b>KS</b>	
Cust. Rep:	Phone:	Rig Phone:	
Legal Desc: <b>SEC-29-18S-16W</b>	Rig Name: <b>Duke#2</b>		
Distance: <b>50 miles (one way)</b>	Supervisor: <b>Aldo Espinosa</b>		

Employees:	Emp. ID:	Employees:	Emp. ID:
ALDO ESPINOZA			
CRISTIAN CAMACHO			
GERARDO BURCIAGA			
<b>Equipment:</b>			
984-2			
903-4/501-5			
774-4/841-5			

Well Information						
Open Hole Section						
Description:	Size (in):	Excess	Top MD (ft)	Btm MD (ft)		
OPEN HOLE	17 1/2	100%	270	500	TAIL CEMENT	
OPEN HOLE	17 1/2	100%	0	270	LEAD CEMENT	
OPEN HOLE	17 1/2			0		
OPEN HOLE	17 1/2					
Tubulars						
Description:	Size (in):	Wgt. (lb/ft)	ID (in)	Grade:	Top MD (ft)	Btm MD (ft)
TOTAL CASING	13 3/8	54.5	12.615		0	487
SHOE	13 3/8	54.5	12.615		447	487

Materials - Pumping Schedule						
Fluid Name	Description	Rqstd Qty	Density	Yield	Water (gal/sk)	
Spacer 1	FRESH WATER	5	8.33	n/a	n/a	
Fluid Name	Description	Rqstd Qty	Density	Yield	Water (gal/sk)	
Lead 1	BJ MULTI-DENSITY CEMENT - CLASS A Light	150	12.10	2.55	14.85	
Addl. Additive	Description	Conc. (lb/sk)	Determined by	Load Volume	UOM	
CA-100	CALCIUM CHLORIDE, PELLETS OR FLAKE	2.82	% BWOC	423.0	lbm	
CLC-CPF	CELLOPHANE FLAKES	0.5	lb/sk	75.0	lbm	
Fluid Name	Description	Rqstd Qty	Density	Yield	Water (gal/sk)	
Tail 1	CLASS A COMMON	255	15.20	1.28	5.74	
Addl. Additive	Description	Conc. (lb/sk)	Determined by	Load Volume	UOM	
CA-100	CALCIUM CHLORIDE, PELLETS OR FLAKE	2.82	% BWOC	719.1	lbm	
CLC-CPF	CELLOPHANE FLAKES	0.5	lb/sk	127.5	lbm	
Fluid Name	Description	Rqstd Qty	Density	Yield	Water (gal/sk)	
Disp. 1	Displacement	69.09730134	8.33	n/a	n/a	

Job Number: <b>LIB1709270528</b>		Job Purpose: <b>01 Surface</b>	
Customer: <b>H2Oil</b>	Date: <b>9/27/2017</b>		
Well Name: <b>Wagner Unit</b>	Number: <b>1 WSW</b>	API/UWI:	
County: <b>Rush</b>	City: <b>Great bend</b>	State: <b>KS</b>	
Cust. Rep:	Phone:	Rig Phone: <b>0</b>	
Distance: <b>50 miles (one way)</b>	Supervisor: <b>Aldo Espinosa</b>		

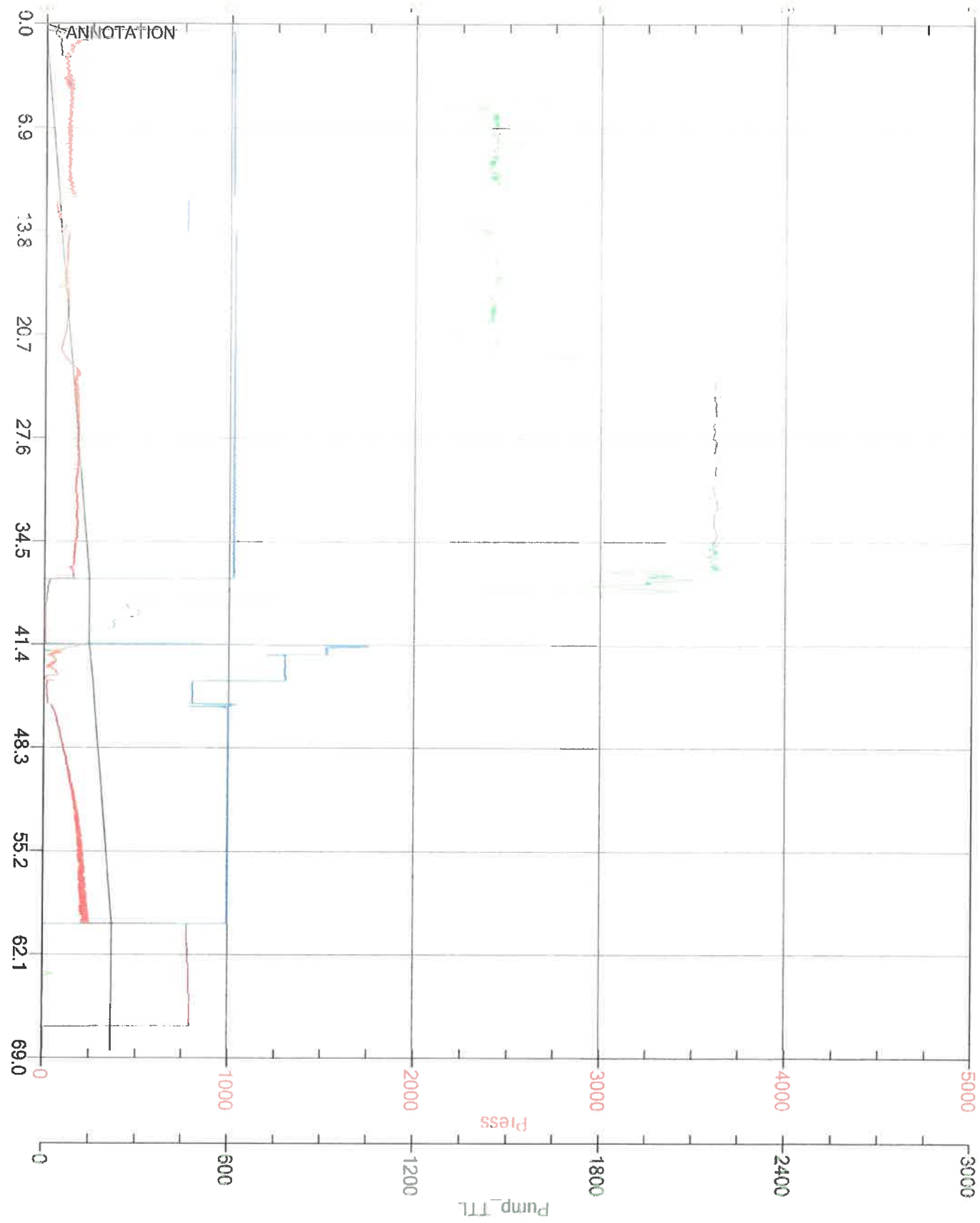


### Cement Job Summary

TIME AM/PM	PRESSURE - (PSI)		FLUID PUMPED DATA		COMMENTS
	CASING	ANNULUS	VOLUME	RATE (BPM)	
9/26/2017					DATE
1000pm					on location
9/27/2017					spot equipment, rig up
330am					casing on bottom
410am					safety meeting
420am					rig head
430am	180		5	3	5 bbl water spacer
435am	140		68	4	150sk/68 bbl lead cement at 12.1#
450am	120		58	4	255sk/58 bbl tail cement at 15.2#
505am					release pre loaded plug
510am	70			3	start displacement
515am	90		20	4	20 bbl gone
518am	140		10	4	30 bbl gone
520am	180		10	4	40 bbl gone
523am	220		10	4	50 bbl gone
526am	230		10	4	60 bbl gone
528am	250-800		9	3	69 bbl bump plug
533am	0				check floats
645am					rig down
					70 bbl back of cement to surface
					leaved 8- 9 5/8 centralizers on location
700am					leave location
					thanks



H2OIL  
WAGNER UNIT 1 WSW



CEMENT MIXING WATER GUIDELINES

Company Name:

H2Oil

Lease Name:

Wagner Unit # 1 WSW

County

State

~~Barton~~ Rush

KS

Water Source:

TANK

Submitted By:

Date:

Aldo Espinosa

9/26/2017

pH Level

7

Must be less than 8.5

Sulfates

400

Must be less than 1,000 PPM

Chlorides

0

Must be less than 3,000 PPM

Temperature

64

COMMENTS

Thank You

Customer Signature

