



Cement Job Summary

Job Number: Lib1709290253		Job Purpose: 02 Production/Long String	
Customer: H2Oil			Date: 9/27/2017
Well Name: Wagner Unit	Number: 1 WSW		API/UWI: 15-165-22152
County: Barton - Rush	City:		State: KS
Cust. Rep:	Phone:		Rig Phone:
Legal Desc: Sec-29-185-16W	Rig Name: Duke#2		
Distance: 50 miles (one way)	Supervisor: Victor Corona-Marta		

Employees:	Emp. ID:	Employees:	Emp. ID:
Victor Corona-Marta		Alex Ayala	
Victor Garcia			
Equipment:			
549-4/550-5		982-2	
993-4/1066-5			

Well Information						
Open Hole Section						
Description:	Size (in):	Excess	Top MD (ft)	Btm MD (ft)		
OPEN HOLE	12 1/4	200%	450	930	TAIL CEMENT	
OPEN HOLE	12 1/4			450	LEAD CEMENT	
OPEN HOLE	12 1/4					
OPEN HOLE	12 1/4		54.5			
Tubulars						
Description:	Size (in):	Wgt. (lb/ft)	ID (in)	Grade:	Top MD (ft)	Btm MD (ft)
PREVIOUS CASING	13 3/8	45.5	12.615		0	450 ← 481'
TOTAL CASING	9 5/8	40	8.835		0	936
SHOE	9 5/8	40	8.835		894	936

Materials - Pumping Schedule						
Fluid Name	Description	Rqstd Qty	Density	Yield	Water (gal/sk)	
Spacer 1	FRESH WATER	5	8.33	n/a	n/a	
Fluid Name	Description	Rqstd Qty	Density	Yield	Water (gal/sk)	
Tail 1	BJ SPECIAL BLEND CEMENT - CLASS A	420	14.80	1.53	6.78	
Addl. Additive	Description	Conc. (lb/sk)	Determined by	Load Volume	UOM	
CFL-330	FLUID LOSS ADDITIVE - LOW DENSITY SLURRIES	0.47	% BWOC	197.4	lbm	
CLC-KOL	KOL-SEAL	5	lb/sk	2100.0	lbm	
CDF-100P	DEFOAMER - POWDER	0.2	lb/sk	84.0	lbm	
Fluid Name	Description	Rqstd Qty	Density	Yield	Water (gal/sk)	
Disp. 1	Displacement	67.78438804	8.33	n/a	n/a	

Job Number: Lib1709290253		Job Purpose: 02 Production/Long String	
Customer: H2Oil			Date: 9/27/2017
Well Name: Wagner Unit	Number: 1 WSW		API/UWI:
County: Barton	City:		State: KS
Cust. Rep:	Phone:		Rig Phone: 0
Distance: 50 miles (one way)	Supervisor: Victor Corona-Marta		
TIME	PRESSURE - (PSI)		FLUID PUMPED DATA
AM/PM	CASING	ANNULUS	VOLUME RATE (BPM)
9/28/2017			
COMMENTS			
DATE			



Cement Job Summary

11:25pm					Arrived at location
					Casin crew was rigging down
					Rig crew had good mud returns
					Rig up to rig
12:55am					Safety meeting with company man rig crew and BJ crew
1:30am	1500				Pressure test lines 1500 psi
1:35am	0		7	4	Rat & Mouse Hole 7bbls
1:45am	60		20	4	Water Spacer 20bbls
1:51am	100		107	4	Cement 114 bbls from 420sacks @14.8lbs
2:30am					Drop plug/wash pump to pit
2:34am			68		Start displacement bbls H2O
2:40am	100		20	4	20bbls gone
2:45am	170		40	4	40bbls gone
2:50am	280		58	4	58bbls gone/slow down rate
2:53am	1100		68	3	Bump plug/check if float holds
					Had 30bbls of cement to surface and .5bbls on water returns
					Rig down
					Crew and I thanked the company man and rig crew for job opportunity.



Customer: H2Oil
Date: Wednesday, September 27, 2017
Well Name: Wagner Unit # 1 WSW
Well Location: _____
Supervisor: Victor Corona-Marta

Equipment Operators: Victor Corona-Marta - Alex Ayala - Victor Garcia

Performance

Customer

	Yes	No
Was the appearance of the personnel and equipment satisfactory?	Yes	No
Was the job performed in a professional manner?	Yes	No
Were the calculations prepared and explained properly?	Yes	No
Were the correct services dispatched to the job site?	Yes	No
Were the services performed as requested?	Yes	No
Did the job site environment remain unchanged?	Yes	No
Did the equipment perform in the manner expected?	Yes	No
Did the materials meet your expectations?	Yes	No
Was the crew prepared for the job?	Yes	No
Was the crew prompt in the rig-up and actual job?	Yes	No
Were reasonable recommendations given, as requested?	Yes	No
Did the crew perform safely?	Yes	No
Was the job performed to your satisfaction?	Yes	No

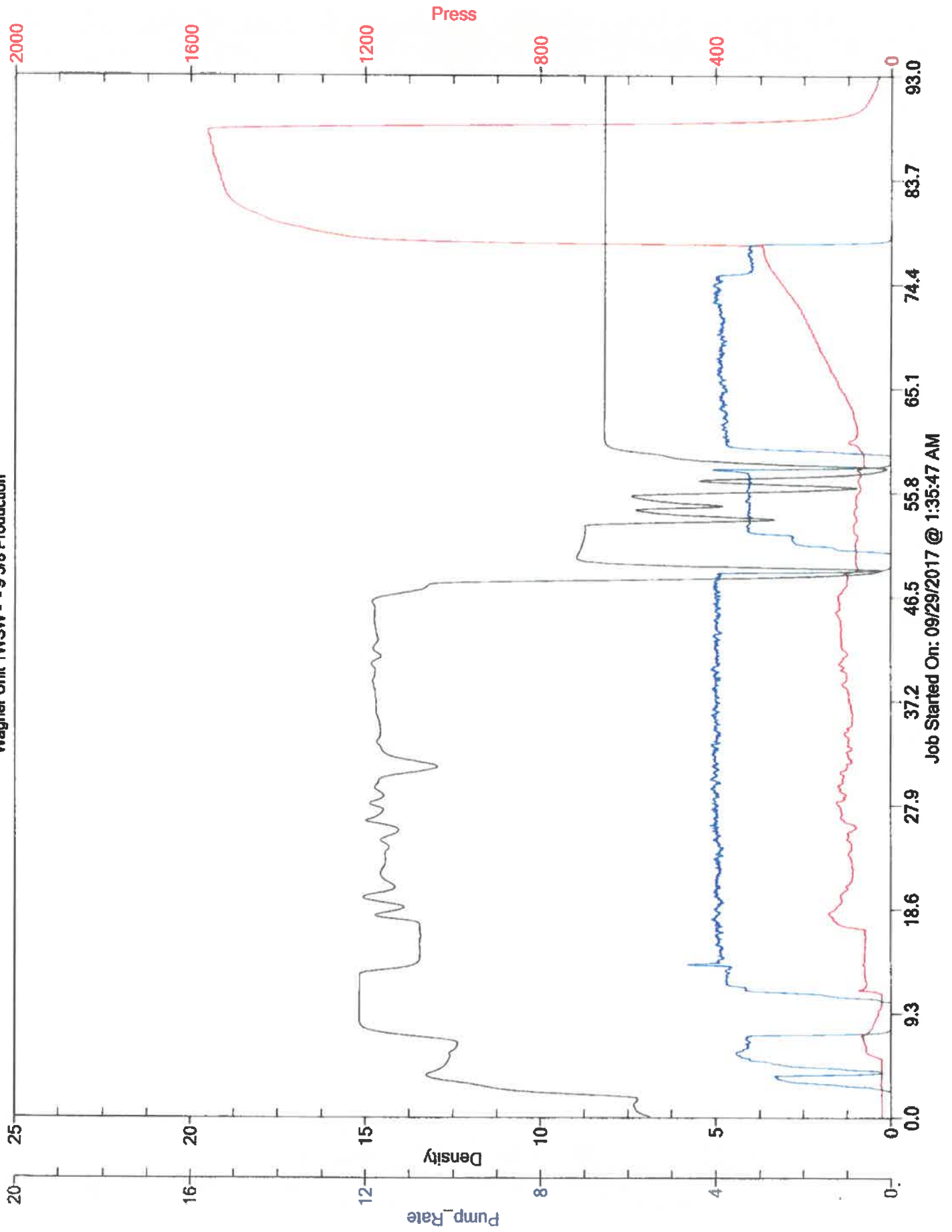
Customer Signature:

Date:

Additional Comments:

H2Oil

Wagner Unit 1WSW - - 9 5/8 Production





CEMENT MIXING WATER GUIDELINES

Company Name: H2Oil

Lease Name: _____

County Wagner Unit # 1 WSW State _____

Water Source: ~~Barton~~ Rush KS

Submitted By: Victor Corona-Marta Date: 9/27/2017

pH Level 7 Must be less than 8.5

Sulfates 400 Must be less than 1,000 PPM

Chlorides 0 Must be less than 3,000 PPM

Temperature 64

COMMENTS

Thank You

Customer Signature 