

KANSAS CORPORATION COMMISSION
OIL & GAS CONSERVATION DIVISION

TEMPORARY ABANDONMENT WELL APPLICATION

OPERATOR: License#
Name:
Address 1:
Address 2:
City: State: Zip:
Contact Person:
Phone:
Contact Person Email:
Field Contact Person:
Field Contact Person Phone:

API No. 15-
Spot Description:
Sec. Twp. S. R.
GPS Location: Lat: Long:
Datum: NAD27 NAD83 WGS84
County: Elevation:
Lease Name: Well #:
Well Type: Oil Gas OG WSW Other:
SWD Permit #: ENHR Permit #:
Gas Storage Permit #:
Spud Date: Date Shut-In:

Table with 7 columns: Conductor, Surface, Production, Intermediate, Liner, Tubing. Rows include Size, Setting Depth, Amount of Cement, Top of Cement, Bottom of Cement.

Casing Fluid Level from Surface: How Determined? Date:
Casing Squeeze(s): to w / sacks of cement, to w / sacks of cement. Date:
Do you have a valid Oil & Gas Lease? Yes No
Depth and Type: Junk in Hole at Tools in Hole at Casing Leaks: Yes No Depth of casing leak(s):
Type Completion: ALT. I ALT. II Depth of: DV Tool: w / sacks of cement Port Collar: w / sack of cement
Packer Type: Size: Inch Set at: Feet
Total Depth: Plug Back Depth: Plug Back Method:

Geological Data:

Table with 4 columns: Formation Name, Formation Top, Formation Base, Completion Information. Rows 1 and 2.

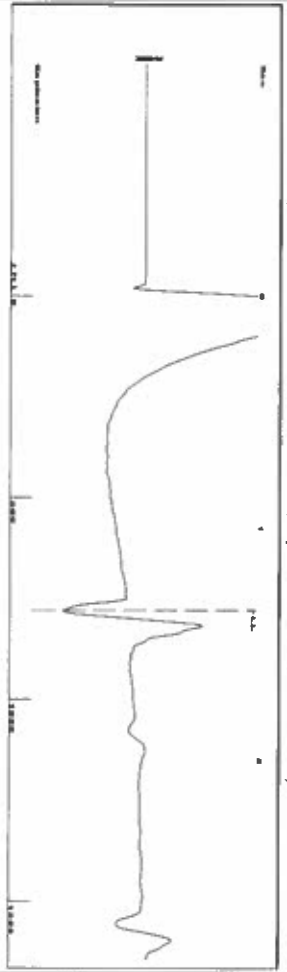
UNDER PENALTY OF PERJURY I HEREBY ATTEST THAT THE INFORMATION CONTAINED HEREIN IS TRUE AND CORRECT TO THE BEST OF MY KNOWLEDGE

Submitted Electronically

Do NOT Write in This Space - KCC USE ONLY
Date Tested: Results: Date Plugged: Date Repaired: Date Put Back in Service:
Review Completed by: Comments:
TA Approved: Yes Denied Date:

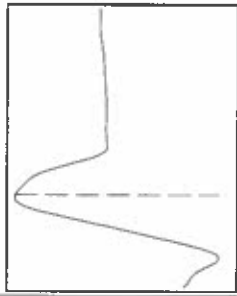
Mail to the Appropriate KCC Conservation Office:

Table with 2 columns: Office Address, Phone. Rows for District Office #1, #2, #3, #4.



Time 1.354 sec  
 Joints 24.5599 Jis  
 Depth 778.55 ft

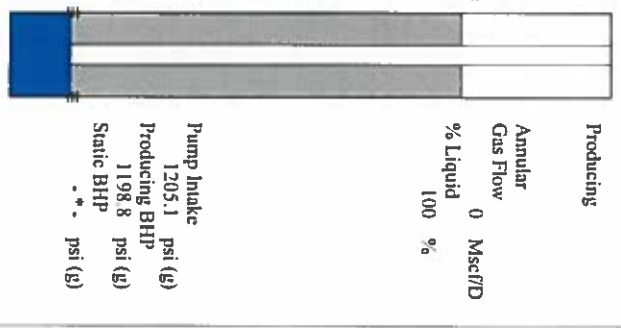
Liquid level calculated with  
 user supplied Acoustic Velocity  
 Acoustic Velocity 1150 ft/s



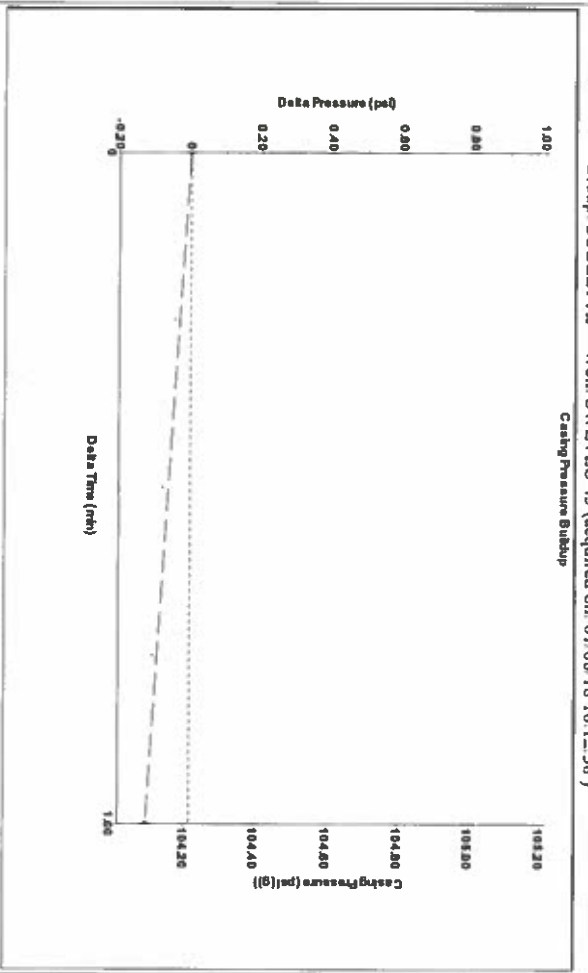
**Analysis Method: Acoustic Velocity**

Group: SUBLETTE Well: SWLVLU 45 (acquired on: 01/08/18 10:12:38 )

Production	Potential	Casing Pressure	Producing
Oil -*-	-*- BRL/D	104.2 psi (g)	Annular
Water -*-	-*- BBL/D	Casing Pressure Buildup	Gas Flow
Gas -*-	-*- Mscf/D	-0.1 psi	% Liquid
		1.00 min	100 %
IPR Method	Vogel	Gas/Liquid Interface Pressure	
PBHP/SBHP	-*-	107.0 psi (g)	
Production Efficiency	0.0	Liquid Level Depth	
		778.55 ft	
Oil 40 deg API		Pump Intake Depth	
Water 1.05 Sp.Gr:H2O		4175.00 ft	
Gas 0.83 Sp.Gr:AIR		Formation Depth	
		4154.00 ft	
Acoustic Velocity	1150 ft/s		



Pump Intake 1205.1 psi (g)  
 Producing BHP 1198.8 psi (g)  
 Static BHP -\*- psi (g)



Change in Pressure -0.12 psi  
 Change in Time 1.00 min  
 PT14679 Range 0 - ? psi

Group: SUBLETTE Well: SWLVLU 45 (acquired on: 01/08/18 10:12:38 )

**Entered Acoustic Velocity for Liquid Level depth determination**

Conservation Division  
District Office No. 1  
210 E. Frontview, Suite A  
Dodge City, KS 67801



Phone: 620-682-7933  
<http://kcc.ks.gov/>

Pat Apple, Chairman  
Shari Feist Albrecht, Commissioner  
Jay Scott Emler, Commissioner

Sam Brownback, Governor

January 09, 2018

Katherine McClurkan  
Merit Energy Company, LLC  
13727 Noel Road Suite 1200  
Dallas, TX 75240

Re: Temporary Abandonment  
API 15-081-21843-00-00  
SWLVLU 45  
SE/4 Sec.24-30S-34W  
Haskell County, Kansas

Dear Katherine McClurkan:

"Your temporary abandonment (TA) application for the well listed above has been approved. In accordance with K.A.R. 82-3-111 the TA status of this well will expire 01/09/2019.

- \* If you return this well to service or plug it, please notify the District Office.
- \* If you sell this well you are required to file a Transfer of Operator form, T-1.
- \* If the well will remain temporarily abandoned, you must submit a new TA application, CP-111, before 01/09/2019.

You may contact me at the number above if you have questions.

Very truly yours,

Michael Maier"