

KANSAS CORPORATION COMMISSION
OIL & GAS CONSERVATION DIVISION

TEMPORARY ABANDONMENT WELL APPLICATION

OPERATOR: License#
Name:
Address 1:
Address 2:
City: State: Zip:
Contact Person:
Phone:
Contact Person Email:
Field Contact Person:
Field Contact Person Phone:

API No. 15-
Spot Description:
Sec. Twp. S. R.
GPS Location: Lat: Long:
Datum: NAD27 NAD83 WGS84
County: Elevation:
Lease Name: Well #:
Well Type: Oil Gas OG WSW Other:
SWD Permit #: ENHR Permit #:
Gas Storage Permit #:
Spud Date: Date Shut-In:

Table with 7 columns: Conductor, Surface, Production, Intermediate, Liner, Tubing. Rows include Size, Setting Depth, Amount of Cement, Top of Cement, Bottom of Cement.

Casing Fluid Level from Surface: How Determined? Date:
Casing Squeeze(s): to w / sacks of cement, to w / sacks of cement. Date:
Do you have a valid Oil & Gas Lease? Yes No
Depth and Type: Junk in Hole at Tools in Hole at Casing Leaks: Yes No Depth of casing leak(s):
Type Completion: ALT. I ALT. II Depth of: DV Tool: w / sacks of cement Port Collar: w / sack of cement
Packer Type: Size: Inch Set at: Feet
Total Depth: Plug Back Depth: Plug Back Method:

Geological Data:

Table with 4 columns: Formation Name, Formation Top, Formation Base, Completion Information. Rows 1 and 2.

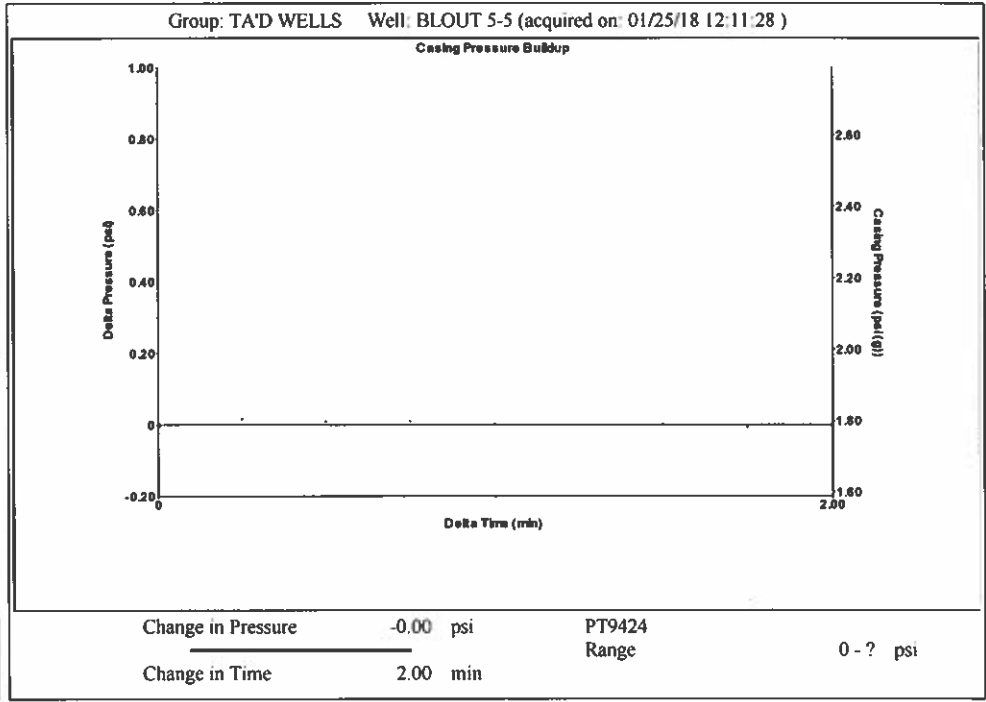
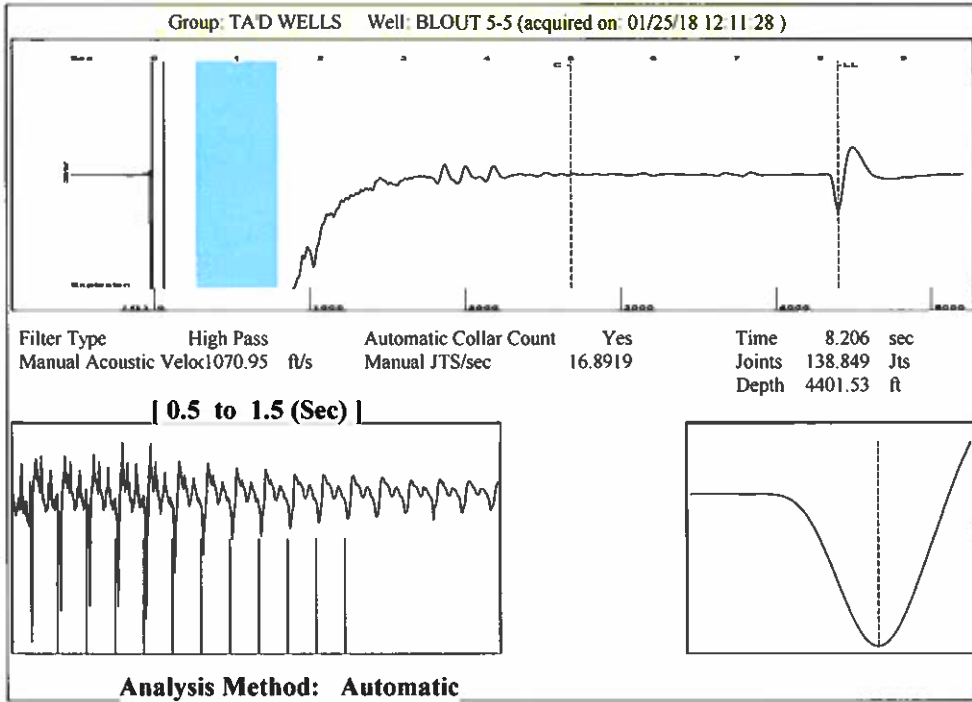
UNDER PENALTY OF PERJURY I HEREBY ATTEST THAT THE INFORMATION CONTAINED HEREIN IS TRUE AND CORRECT TO THE BEST OF MY KNOWLEDGE

Submitted Electronically

Do NOT Write in This Space - KCC USE ONLY
Date Tested: Results: Date Plugged: Date Repaired: Date Put Back in Service:
Review Completed by: Comments:
TA Approved: Yes Denied Date:

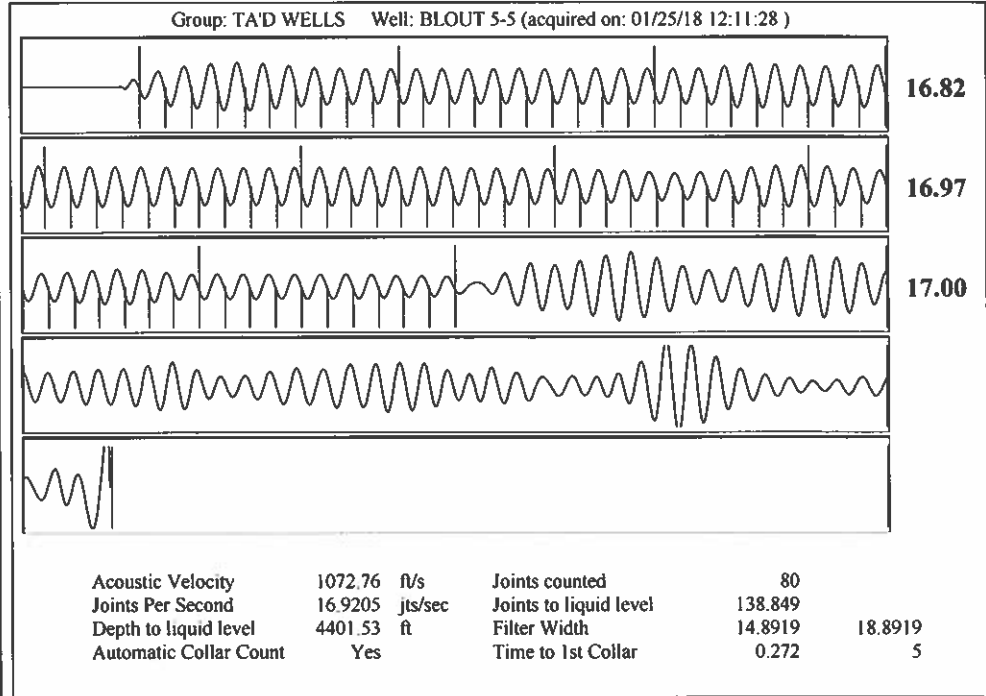
Mail to the Appropriate KCC Conservation Office:

Table with 2 columns: Office Address, Phone. Rows for District Office #1, #2, #3, #4.



Group: TA'D WELLS Well: BLOUT 5-5 (acquired on: 01/25/18 12:11:28)

Production				
Current	Potential	Casing Pressure	Producing	
Oil - * -	- * - BBL/D	1.8 psi (g)		
Water - * -	- * - BBL/D	Casing Pressure Buildup	Annular	
Gas - * -	- * - Mscf/D	-0.0 psi	Gas Flow	
		2.00 min	0 Mscf/D	
IPR Method	Vogel	Gas/Liquid Interface Pressure	% Liquid	
PBHP/SBHP	- * -	4.2 psi (g)	100 %	
Production Efficiency	0.0			
Oil 40 deg.API		Liquid Level Depth		
Water 1.05 Sp.Gr.H2O		4401.53 ft		
Gas 0.92 Sp.Gr.AIR		Pump Intake Depth		
		4645.00 ft		
Acoustic Velocity	1072.76 ft/s	Formation Depth		
		4700.00 ft		
Formation Submergence			Pump Intake	
Total Gaseous Liquid Column HT (TVD)	243 ft		87.4 psi (g)	
Equivalent Gas Free Liquid HT (TVD)	243 ft		Producing BHP	
			112.4 psi (g)	
Acoustic Test			Static BHP	
			- * - psi (g)	



January 30, 2018

Katherine McClurkan
Merit Energy Company, LLC
13727 Noel Road, Suite 1200
Dallas, TX 75240

Re: Temporary Abandonment
API 15-129-21691-00-00
Blout 5-5
SE/4 Sec.05-33S-42W
Morton County, Kansas

Dear Katherine McClurkan:

"Your temporary abandonment (TA) application for the well listed above has been approved. In accordance with K.A.R. 82-3-111 the TA status of this well will expire 01/30/2019.

- * If you return this well to service or plug it, please notify the District Office.
- * If you sell this well you are required to file a Transfer of Operator form, T-1.
- * If the well will remain temporarily abandoned, you must submit a new TA application, CP-111, before 01/30/2019.

You may contact me at the number above if you have questions.

Very truly yours,

Michael Maier"