

Operator Name: _____ Lease Name: _____ Well #: _____

Sec. _____ Twp. _____ S. R. _____ East West County: _____

INSTRUCTIONS: Show important tops of formations penetrated. Detail all cores. Report all final copies of drill stems tests giving interval tested, time tool open and closed, flowing and shut-in pressures, whether shut-in pressure reached static level, hydrostatic pressures, bottom hole temperature, fluid recovery, and flow rates if gas to surface test, along with final chart(s). Attach extra sheet if more space is needed.

Final Radioactivity Log, Final Logs run to obtain Geophysical Data and Final Electric Logs must be emailed to kcc-well-logs@kcc.ks.gov. Digital electronic log files must be submitted in LAS version 2.0 or newer AND an image file (TIFF or PDF).

Drill Stem Tests Taken <input type="checkbox"/> Yes <input type="checkbox"/> No <i>(Attach Additional Sheets)</i> Samples Sent to Geological Survey <input type="checkbox"/> Yes <input type="checkbox"/> No Cores Taken <input type="checkbox"/> Yes <input type="checkbox"/> No Electric Log Run <input type="checkbox"/> Yes <input type="checkbox"/> No Geologist Report / Mud Logs <input type="checkbox"/> Yes <input type="checkbox"/> No List All E. Logs Run: _____	<input type="checkbox"/> Log Formation (Top), Depth and Datum <input type="checkbox"/> Sample Name Top Datum
--	---

CASING RECORD <input type="checkbox"/> New <input type="checkbox"/> Used							
Report all strings set-conductor, surface, intermediate, production, etc.							
Purpose of String	Size Hole Drilled	Size Casing Set (In O.D.)	Weight Lbs. / Ft.	Setting Depth	Type of Cement	# Sacks Used	Type and Percent Additives

ADDITIONAL CEMENTING / SQUEEZE RECORD				
Purpose:	Depth Top Bottom	Type of Cement	# Sacks Used	Type and Percent Additives
<input type="checkbox"/> Perforate <input type="checkbox"/> Protect Casing <input type="checkbox"/> Plug Back TD <input type="checkbox"/> Plug Off Zone				

1. Did you perform a hydraulic fracturing treatment on this well? Yes No *(If No, skip questions 2 and 3)*
2. Does the volume of the total base fluid of the hydraulic fracturing treatment exceed 350,000 gallons? Yes No *(If No, skip question 3)*
3. Was the hydraulic fracturing treatment information submitted to the chemical disclosure registry? Yes No *(If No, fill out Page Three of the ACO-1)*

Date of first Production/Injection or Resumed Production/Injection:	Producing Method: <input type="checkbox"/> Flowing <input type="checkbox"/> Pumping <input type="checkbox"/> Gas Lift <input type="checkbox"/> Other <i>(Explain)</i> _____				
Estimated Production Per 24 Hours	Oil Bbls.	Gas Mcf	Water Bbls.	Gas-Oil Ratio	Gravity

DISPOSITION OF GAS: <input type="checkbox"/> Vented <input type="checkbox"/> Sold <input type="checkbox"/> Used on Lease <i>(If vented, Submit ACO-18.)</i>	METHOD OF COMPLETION: <input type="checkbox"/> Open Hole <input type="checkbox"/> Perf. <input type="checkbox"/> Dually Comp. <input type="checkbox"/> Commingled <i>(Submit ACO-5)</i> <i>(Submit ACO-4)</i>	PRODUCTION INTERVAL: Top _____ Bottom _____
---	---	--

Shots Per Foot	Perforation Top	Perforation Bottom	Bridge Plug Type	Bridge Plug Set At	Acid, Fracture, Shot, Cementing Squeeze Record <i>(Amount and Kind of Material Used)</i>

TUBING RECORD:	Size:	Set At:	Packer At:	
----------------	-------	---------	------------	--

Form	ACO1 - Well Completion
Operator	StrataKan Exploration, LLC
Well Name	GASKILL RANGE-BERTRAND UNIT 5-1
Doc ID	1379459

All Electric Logs Run

DUCP
MEL
DIL
BHCS



DRILL STEM TEST REPORT

Prepared For: **Stratakan Exploration, LLC**

100 S Main
Plainville, KS 67663

ATTN: Jason Alm

Gaskill-Bertrand 5-1

5-12s-33w Logan.KS

Start Date: 2017.09.14 @ 05:40:00

End Date: 2017.09.14 @ 12:06:15

Job Ticket #: 64224 DST #: 1

Trilobite Testing, Inc
PO Box 362 Hays, KS 67601
ph: 785-625-4778 fax: 785-625-5620

Printed: 2017.09.18 @ 14:45:18



TRILOBITE TESTING, INC.

DRILL STEM TEST REPORT

Stratakan Exploration, LLC

5-12s-33w Logan.KS

100 S Main
Plainville, KS 67663

Gaskill-Bertrand 5-1

ATTN: Jason Alm

Job Ticket: 64224

DST#: 1

Test Start: 2017.09.14 @ 05:40:00

GENERAL INFORMATION:

Formation: **LKC I-J**

Deviated: No Whipstock: ft (KB)

Time Tool Opened: 08:19:45

Time Test Ended: 12:06:15

Test Type: Conventional Bottom Hole (Initial)

Tester: Bradley Walter

Unit No: 78

Interval: 4290.00 ft (KB) To 4350.00 ft (KB) (TVD)

Reference Elevations: 3172.00 ft (KB)

Total Depth: 4350.00 ft (KB) (TVD)

3167.00 ft (CF)

Hole Diameter: 7.88 inches Hole Condition: Good

KB to GR/CF: 5.00 ft

Serial #: 8845 Outside

Press@RunDepth: 40.49 psig @ 4291.00 ft (KB)

Capacity: 8000.00 psig

Start Date: 2017.09.14

End Date:

2017.09.14

Last Calib.: 2017.09.14

Start Time: 05:40:05

End Time:

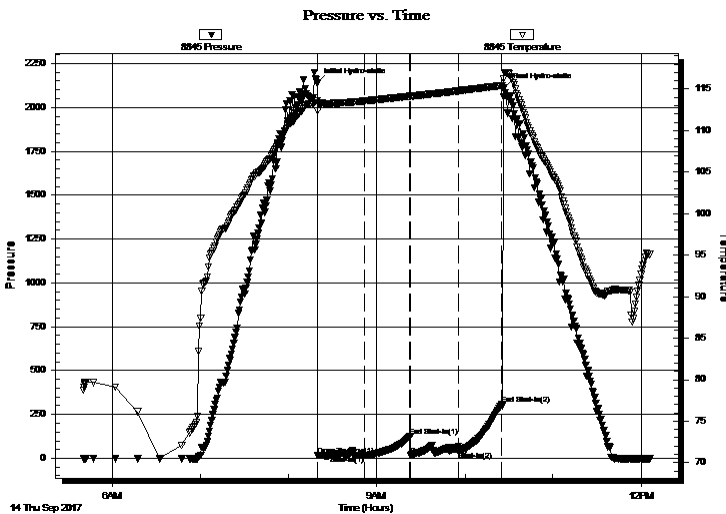
12:06:14

Time On Btm: 2017.09.14 @ 08:19:15

Time Off Btm: 2017.09.14 @ 10:27:00

TEST COMMENT: IF: 1/2" blow.
IS: No return.
FF: No blow.
FS: No return.

PRESSURE SUMMARY



Time (Min.)	Pressure (psig)	Temp (deg F)	Annotation
0	2141.76	113.64	Initial Hydro-static
1	17.13	112.37	Open To Flow (1)
33	16.92	113.55	Shut-In(1)
63	124.90	114.13	End Shut-In(1)
64	17.29	114.14	Open To Flow (2)
97	40.49	114.77	Shut-In(2)
126	307.93	115.42	End Shut-In(2)
128	2112.21	117.00	Final Hydro-static

Recovery

Length (ft)	Description	Volume (bbl)
10.00	mud 100m (oil spots)	0.05

Gas Rates

Choke (inches)	Pressure (psig)	Gas Rate (Mcf/d)



**TRILOBITE
TESTING, INC.**

DRILL STEM TEST REPORT

TOOL DIAGRAM

Stratakan Exploration, LLC

5-12s-33w Logan.KS

100 S Main
Plainville, KS 67663

Gaskill-Bertrand 5-1

Job Ticket: 64224

DST#: 1

ATTN: Jason Alm

Test Start: 2017.09.14 @ 05:40:00

Tool Information

Drill Pipe:	Length: 4155.00 ft	Diameter: 3.80 inches	Volume: 58.28 bbl	Tool Weight: 2000.00 lb
Heavy Wt. Pipe:	Length: 0.00 ft	Diameter: 0.00 inches	Volume: 0.00 bbl	Weight set on Packer: 25000.00 lb
Drill Collar:	Length: 119.00 ft	Diameter: 2.25 inches	Volume: 0.59 bbl	Weight to Pull Loose: 65000.00 lb
			<u>Total Volume: 58.87 bbl</u>	Tool Chased 0.00 ft
Drill Pipe Above KB:	4.00 ft			String Weight: Initial 53000.00 lb
Depth to Top Packer:	4290.00 ft			Final 53000.00 lb
Depth to Bottom Packer:	ft			
Interval between Packers:	60.00 ft			
Tool Length:	80.00 ft			
Number of Packers:	2	Diameter: 6.75 inches		

Tool Comments:

Tool Description

Tool Description	Length (ft)	Serial No.	Position	Depth (ft)	Accum. Lengths
Change Over Sub	1.00			4271.00	
Shut In Tool	5.00			4276.00	
Hydraulic tool	5.00			4281.00	
Packer	5.00			4286.00	20.00 Bottom Of Top Packer
Packer	4.00			4290.00	
Stubb	1.00			4291.00	
Recorder	0.00	8365	Inside	4291.00	
Recorder	0.00	8845	Outside	4291.00	
Perforations	23.00			4314.00	
Change Over Sub	1.00			4315.00	
Drill Pipe	31.00			4346.00	
Change Over Sub	1.00			4347.00	
Bullnose	3.00			4350.00	60.00 Bottom Packers & Anchor

Total Tool Length: 80.00



**TRILOBITE
TESTING, INC.**

DRILL STEM TEST REPORT

FLUID SUMMARY

Stratakan Exploration, LLC

5-12s-33w Logan.KS

100 S Main
Plainville, KS 67663

Gaskill-Bertrand 5-1

Job Ticket: 64224

DST#: 1

ATTN: Jason Alm

Test Start: 2017.09.14 @ 05:40:00

Mud and Cushion Information

Mud Type: Gel Chem

Cushion Type:

Oil API:

0 deg API

Mud Weight: 9.00 lb/gal

Cushion Length:

ft

Water Salinity:

0 ppm

Viscosity: 52.00 sec/qt

Cushion Volume:

bbbl

Water Loss: 8.79 in³

Gas Cushion Type:

Resistivity: ohm.m

Gas Cushion Pressure:

psig

Salinity: 3500.00 ppm

Filter Cake: 1.00 inches

Recovery Information

Recovery Table

Length ft	Description	Volume bbl
10.00	mud 100m (oil spots)	0.049

Total Length: 10.00 ft Total Volume: 0.049 bbl

Num Fluid Samples: 0

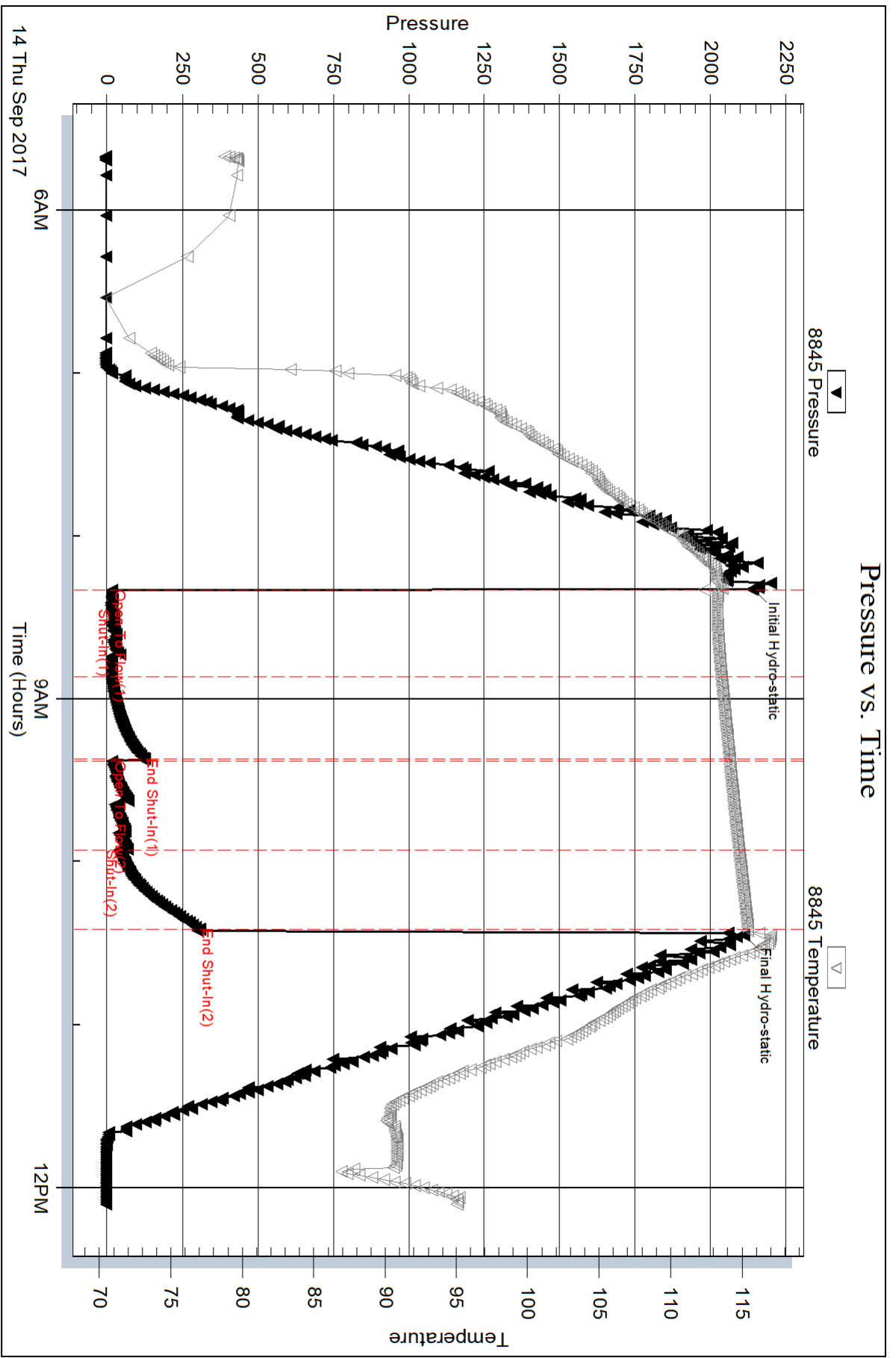
Num Gas Bombs: 0

Serial #:

Laboratory Name:

Laboratory Location:

Recovery Comments:



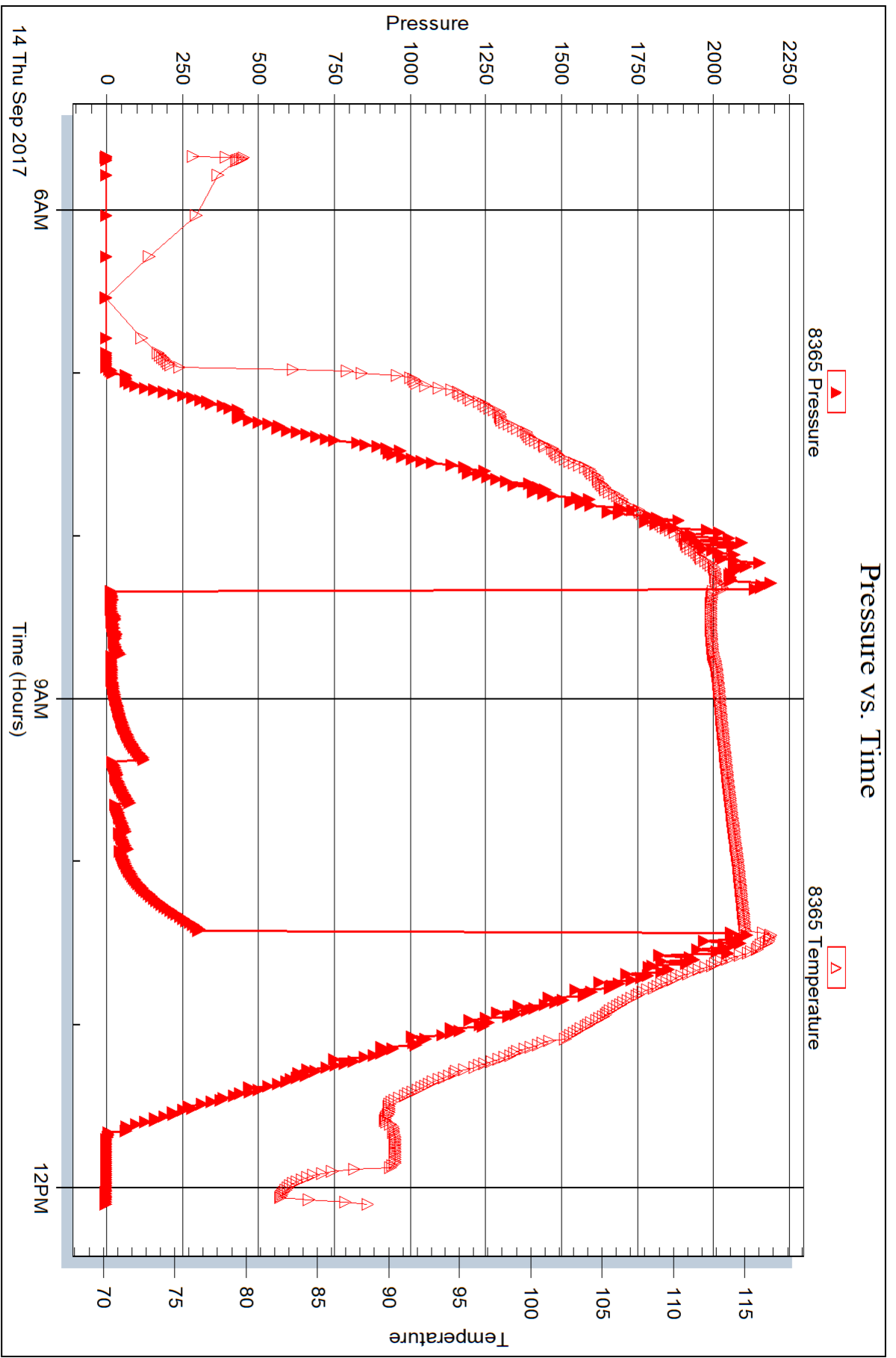
Serial #: 8365

Inside

Stratakan Exploration, LLC

Gaskill-Bertrand 5-1

DST Test Number: 1



Trilobite Testing, Inc

Ref. No: 64224

Printed: 2017.09.18 @ 14:45:19



DRILL STEM TEST REPORT

Prepared For: **Stratakan Exploration, LLC**

100 S Main
Plainville, KS 67663

ATTN: Jason Alm

Gaskill-Bertrand 5-1

5-12s-33w Logan.KS

Start Date: 2017.09.15 @ 19:23:00

End Date: 2017.09.16 @ 01:56:15

Job Ticket #: 64225 DST #: 2

Trilobite Testing, Inc

PO Box 362 Hays, KS 67601

ph: 785-625-4778 fax: 785-625-5620

Printed: 2017.09.18 @ 14:44:52



TRILOBITE TESTING, INC.

DRILL STEM TEST REPORT

Stratakan Exploration, LLC

5-12s-33w Logan.KS

100 S Main
Plainville, KS 67663

Gaskill-Bertrand 5-1

ATTN: Jason Alm

Job Ticket: 64225

DST#: 2

Test Start: 2017.09.15 @ 19:23:00

GENERAL INFORMATION:

Formation: **Ft Scott - Myric Sta**

Deviated: No Whipstock: ft (KB)

Time Tool Opened: 21:54:00

Time Test Ended: 01:56:15

Test Type: Conventional Bottom Hole (Reset)

Tester: Bradley Walter

Unit No: 78

Interval: 4568.00 ft (KB) To 4625.00 ft (KB) (TVD)

Reference Elevations: 3172.00 ft (KB)

Total Depth: 4625.00 ft (KB) (TVD)

3167.00 ft (CF)

Hole Diameter: 7.88 inches Hole Condition: Good

KB to GR/CF: 5.00 ft

Serial #: 8845 Outside

Press@RunDepth: 22.62 psig @ 4569.00 ft (KB)

Capacity: 8000.00 psig

Start Date: 2017.09.15

End Date:

2017.09.16

Last Calib.:

2017.09.16

Start Time: 19:23:05

End Time:

01:56:14

Time On Btm:

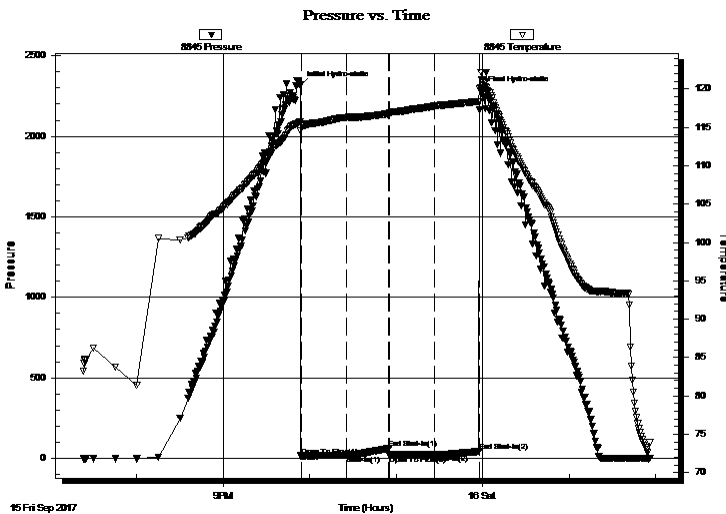
2017.09.15 @ 21:53:15

Time Off Btm:

2017.09.15 @ 23:59:15

TEST COMMENT: IF: 1" blow .
IS: No return.
FF: Surface blow .
FS: No return.

PRESSURE SUMMARY



Time (Min.)	Pressure (psig)	Temp (deg F)	Annotation
0	2316.63	115.74	Initial Hydro-static
1	15.04	115.39	Open To Flow (1)
32	18.75	116.29	Shut-In(1)
62	61.36	116.76	End Shut-In(1)
62	19.86	116.87	Open To Flow (2)
93	22.62	117.76	Shut-In(2)
125	42.49	118.39	End Shut-In(2)
126	2280.51	121.20	Final Hydro-static

Recovery

Length (ft)	Description	Volume (bbl)
15.00	ocm 10o 90m	0.07

Gas Rates

Choke (inches)	Pressure (psig)	Gas Rate (Mcf/d)

* Recovery from multiple tests



**TRILOBITE
TESTING, INC.**

DRILL STEM TEST REPORT

TOOL DIAGRAM

Stratakan Exploration, LLC

5-12s-33w Logan.KS

100 S Main
Plainville, KS 67663

Gaskill-Bertrand 5-1

Job Ticket: 64225

DST#: 2

ATTN: Jason Alm

Test Start: 2017.09.15 @ 19:23:00

Tool Information

Drill Pipe:	Length: 4441.00 ft	Diameter: 3.80 inches	Volume: 62.30 bbl	Tool Weight: 2000.00 lb
Heavy Wt. Pipe:	Length: 0.00 ft	Diameter: 0.00 inches	Volume: 0.00 bbl	Weight set on Packer: 25000.00 lb
Drill Collar:	Length: 119.00 ft	Diameter: 2.25 inches	Volume: 0.59 bbl	Weight to Pull Loose: 70000.00 lb
			<u>Total Volume: 62.89 bbl</u>	Tool Chased 0.00 ft
Drill Pipe Above KB:	12.00 ft			String Weight: Initial 55000.00 lb
Depth to Top Packer:	4568.00 ft			Final 55000.00 lb
Depth to Bottom Packer:	ft			
Interval between Packers:	57.00 ft			
Tool Length:	77.00 ft			
Number of Packers:	2	Diameter: 6.75 inches		

Tool Comments:

Tool Description

Tool Description	Length (ft)	Serial No.	Position	Depth (ft)	Accum. Lengths
Change Over Sub	1.00			4549.00	
Shut In Tool	5.00			4554.00	
Hydraulic tool	5.00			4559.00	
Packer	5.00			4564.00	20.00 Bottom Of Top Packer
Packer	4.00			4568.00	
Stubb	1.00			4569.00	
Recorder	0.00	8365	Inside	4569.00	
Recorder	0.00	8845	Outside	4569.00	
Perforations	20.00			4589.00	
Change Over Sub	1.00			4590.00	
Drill Pipe	31.00			4621.00	
Change Over Sub	1.00			4622.00	
Bullnose	3.00			4625.00	57.00 Bottom Packers & Anchor

Total Tool Length: 77.00



**TRILOBITE
TESTING, INC.**

DRILL STEM TEST REPORT

FLUID SUMMARY

Stratakan Exploration, LLC

5-12s-33w Logan.KS

100 S Main
Plainville, KS 67663

Gaskill-Bertrand 5-1

Job Ticket: 64225

DST#: 2

ATTN: Jason Alm

Test Start: 2017.09.15 @ 19:23:00

Mud and Cushion Information

Mud Type: Gel Chem

Cushion Type:

Oil API:

0 deg API

Mud Weight: 9.00 lb/gal

Cushion Length:

ft

Water Salinity:

0 ppm

Viscosity: 54.00 sec/qt

Cushion Volume:

bbbl

Water Loss: 8.79 in³

Gas Cushion Type:

Resistivity: ohm.m

Gas Cushion Pressure:

psig

Salinity: 4500.00 ppm

Filter Cake: 1.00 inches

Recovery Information

Recovery Table

Length ft	Description	Volume bbl
15.00	ocm 10o 90m	0.074

Total Length: 15.00 ft Total Volume: 0.074 bbl

Num Fluid Samples: 0

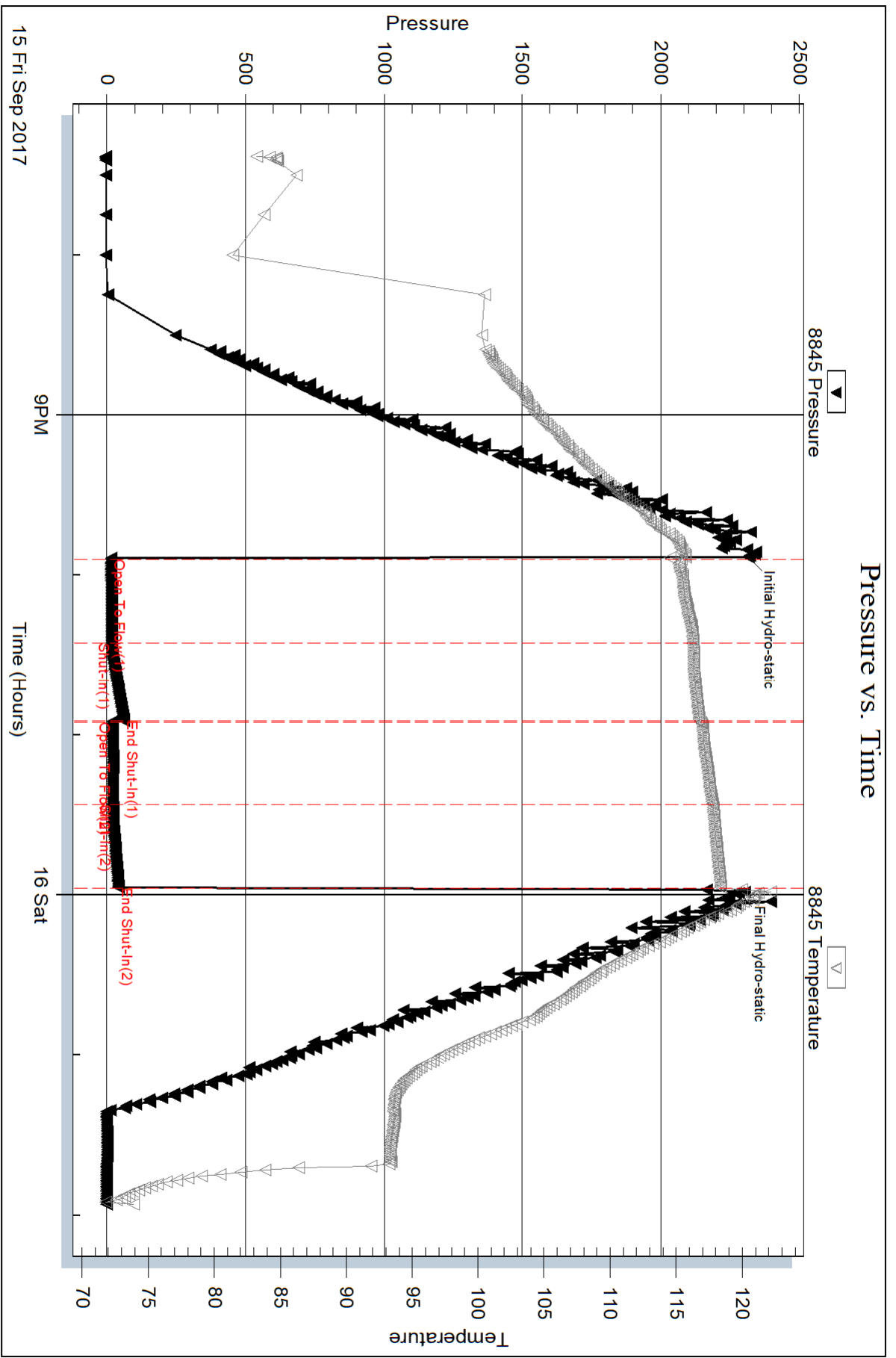
Num Gas Bombs: 0

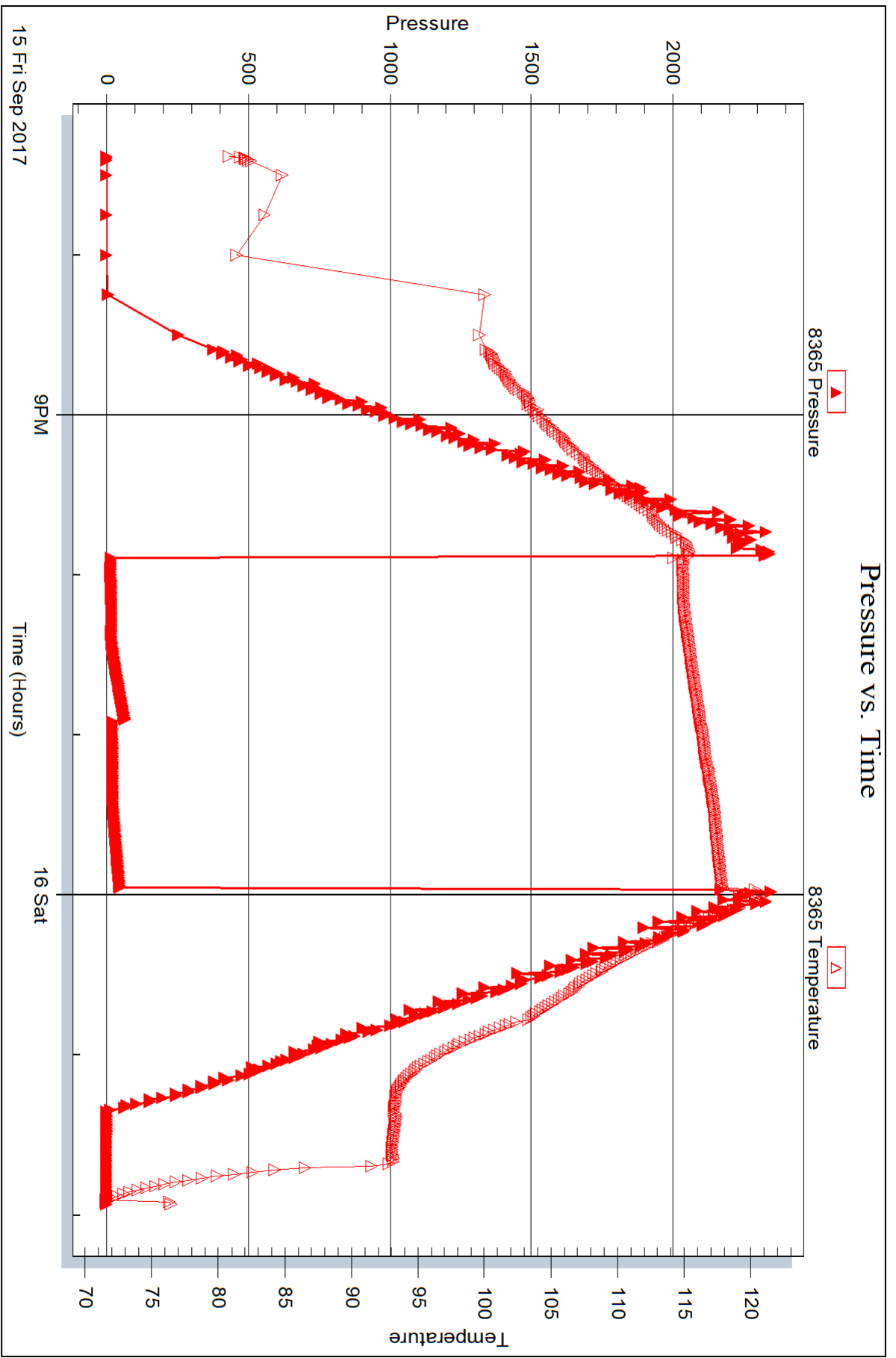
Serial #:

Laboratory Name:

Laboratory Location:

Recovery Comments:







DRILL STEM TEST REPORT

Prepared For: **Stratakan Exploration, LLC**

100 S Main
Plainville, KS 67663

ATTN: Jason Alm

Gaskill-Bertrand 5-1

5-12s-33w Logan.KS

Start Date: 2017.09.16 @ 14:52:00

End Date: 2017.09.16 @ 23:41:30

Job Ticket #: 64684 DST #: 3

Trilobite Testing, Inc
PO Box 362 Hays, KS 67601
ph: 785-625-4778 fax: 785-625-5620

Printed: 2017.09.18 @ 14:44:19



**TRILOBITE
TESTING, INC.**

DRILL STEM TEST REPORT

Stratakan Exploration, LLC

5-12s-33w Logan.KS

100 S Main
Plainville, KS 67663

Gaskill-Bertrand 5-1

ATTN: Jason Alm

Job Ticket: 64684

DST#: 3

Test Start: 2017.09.16 @ 14:52:00

GENERAL INFORMATION:

Formation: **Johnson**

Deviated: No Whipstock: ft (KB)

Time Tool Opened: 17:16:45

Time Test Ended: 23:41:30

Test Type: Conventional Bottom Hole (Reset)

Tester: Bradley Walter

Unit No: 78

Interval: 4545.00 ft (KB) To 4700.00 ft (KB) (TVD)

Reference Elevations: 3172.00 ft (KB)

Total Depth: 4700.00 ft (KB) (TVD)

3167.00 ft (CF)

Hole Diameter: 7.88 inches Hole Condition: Good

KB to GR/CF: 5.00 ft

Serial #: 8845 Outside

Press@RunDepth: 313.80 psig @ 4646.00 ft (KB)

Capacity: 8000.00 psig

Start Date: 2017.09.16

End Date:

2017.09.16

Last Calib.:

2017.09.16

Start Time: 14:52:05

End Time:

23:41:30

Time On Btm:

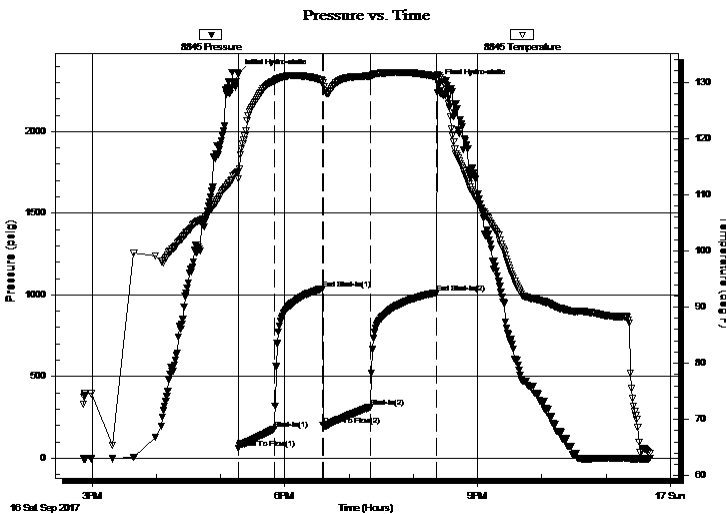
2017.09.16 @ 17:16:30

Time Off Btm:

2017.09.16 @ 20:23:30

TEST COMMENT: IF: BOB @ 3 min.
IS: BOB @ 15 min.
FF: BOB @ open.
FS: BOB @ 40 min. Gas to surface

PRESSURE SUMMARY



Time (Min.)	Pressure (psig)	Temp (deg F)	Annotation
0	2352.16	114.10	Initial Hydro-static
1	61.49	112.85	Open To Flow (1)
34	178.05	130.14	Shut-In(1)
79	1038.48	130.30	End Shut-In(1)
80	203.51	129.90	Open To Flow (2)
124	313.80	131.10	Shut-In(2)
185	1013.59	130.98	End Shut-In(2)
187	2295.20	131.19	Final Hydro-static

Recovery

Length (ft)	Description	Volume (bbl)
120.00	gocm 45g 25o 30m	0.60
780.00	go 40g 60o	10.94
0.00	Gas to Surface	0.00

* Recovery from multiple tests

Gas Rates

Choke (inches)	Pressure (psig)	Gas Rate (Mcf/d)



**TRILOBITE
TESTING, INC.**

DRILL STEM TEST REPORT

TOOL DIAGRAM

Stratakan Exploration, LLC

5-12s-33w Logan.KS

100 S Main
Plainville, KS 67663

Gaskill-Bertrand 5-1

Job Ticket: 64684

DST#: 3

ATTN: Jason Alm

Test Start: 2017.09.16 @ 14:52:00

Tool Information

Drill Pipe:	Length: 4535.00 ft	Diameter: 3.80 inches	Volume: 63.61 bbl	Tool Weight: 2000.00 lb
Heavy Wt. Pipe:	Length: 0.00 ft	Diameter: 0.00 inches	Volume: 0.00 bbl	Weight set on Packer: 2000.00 lb
Drill Collar:	Length: 119.00 ft	Diameter: 2.25 inches	Volume: 0.59 bbl	Weight to Pull Loose: 70000.00 lb
			<u>Total Volume: 64.20 bbl</u>	Tool Chased 0.00 ft
Drill Pipe Above KB:	29.00 ft			String Weight: Initial 56000.00 lb
Depth to Top Packer:	4645.00 ft			Final 58000.00 lb
Depth to Bottom Packer:	ft			
Interval between Packers:	55.00 ft			
Tool Length:	75.00 ft			
Number of Packers:	2	Diameter: 6.75 inches		

Tool Comments:

Tool Description	Length (ft)	Serial No.	Position	Depth (ft)	Accum. Lengths
------------------	-------------	------------	----------	------------	----------------

Change Over Sub	1.00			4626.00	
Shut In Tool	5.00			4631.00	
Hydraulic tool	5.00			4636.00	
Packer	5.00			4641.00	20.00 Bottom Of Top Packer
Packer	4.00			4645.00	
Stubb	1.00			4646.00	
Recorder	0.00	8365	Inside	4646.00	
Recorder	0.00	8845	Outside	4646.00	
Perforations	18.00			4664.00	
Change Over Sub	1.00			4665.00	
Drill Pipe	31.00			4696.00	
Change Over Sub	1.00			4697.00	
Bullnose	3.00			4700.00	55.00 Bottom Packers & Anchor

Total Tool Length: 75.00



**TRILOBITE
TESTING, INC.**

DRILL STEM TEST REPORT

FLUID SUMMARY

Stratakan Exploration, LLC

5-12s-33w Logan.KS

100 S Main
Plainville, KS 67663

Gaskill-Bertrand 5-1

Job Ticket: 64684

DST#: 3

ATTN: Jason Alm

Test Start: 2017.09.16 @ 14:52:00

Mud and Cushion Information

Mud Type: Gel Chem

Cushion Type:

Oil API:

27 deg API

Mud Weight: 9.00 lb/gal

Cushion Length:

ft

Water Salinity:

0 ppm

Viscosity: 61.00 sec/qt

Cushion Volume:

bbbl

Water Loss: 8.79 in³

Gas Cushion Type:

Resistivity: ohm.m

Gas Cushion Pressure:

psig

Salinity: 5000.00 ppm

Filter Cake: 1.00 inches

Recovery Information

Recovery Table

Length ft	Description	Volume bbbl
120.00	gocm 45g 25o 30m	0.599
780.00	go 40g 60o	10.941
0.00	Gas to Surface	0.000

Total Length: 900.00 ft Total Volume: 11.540 bbl

Num Fluid Samples: 0

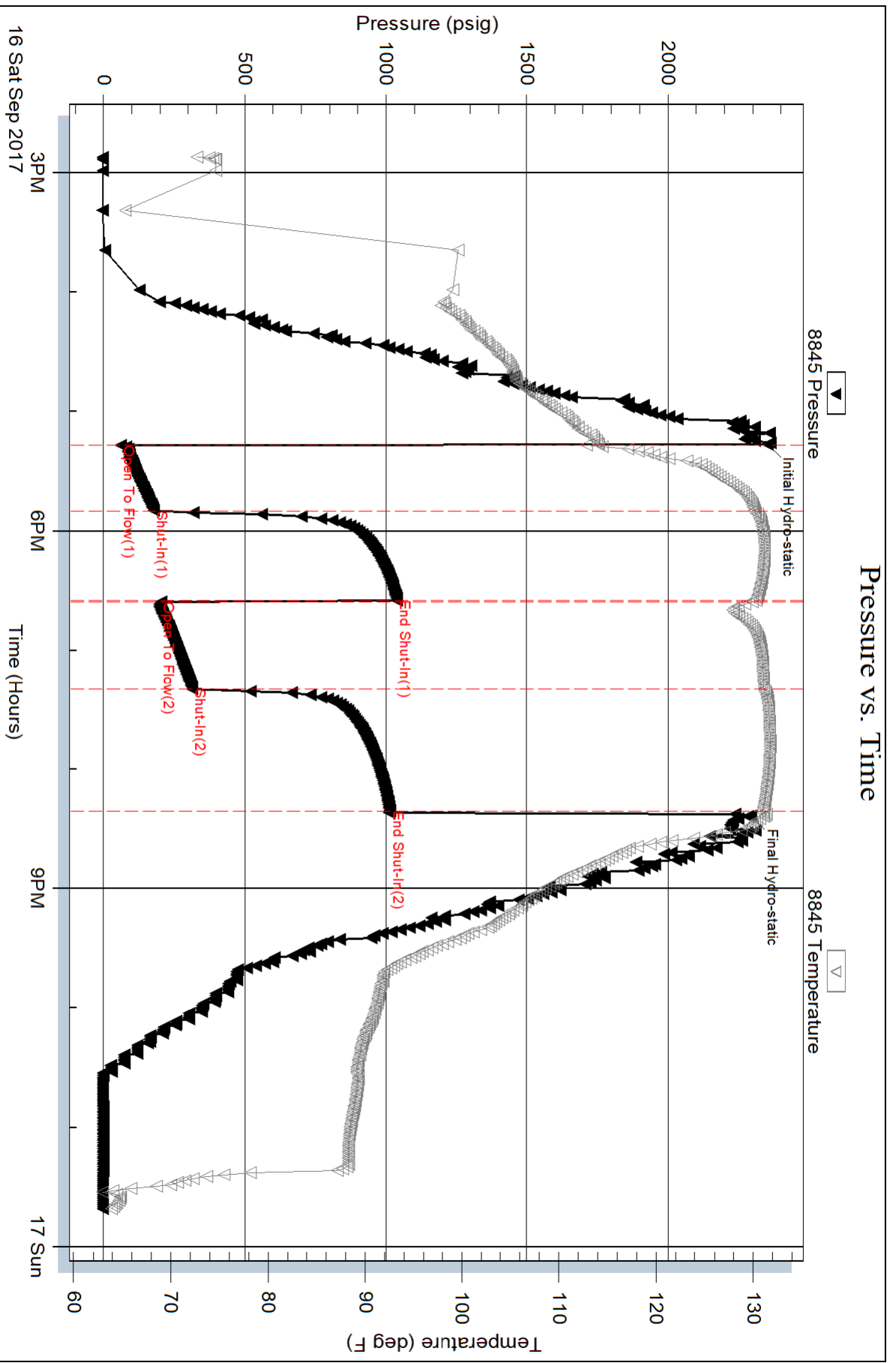
Num Gas Bombs: 0

Serial #:

Laboratory Name:

Laboratory Location:

Recovery Comments:



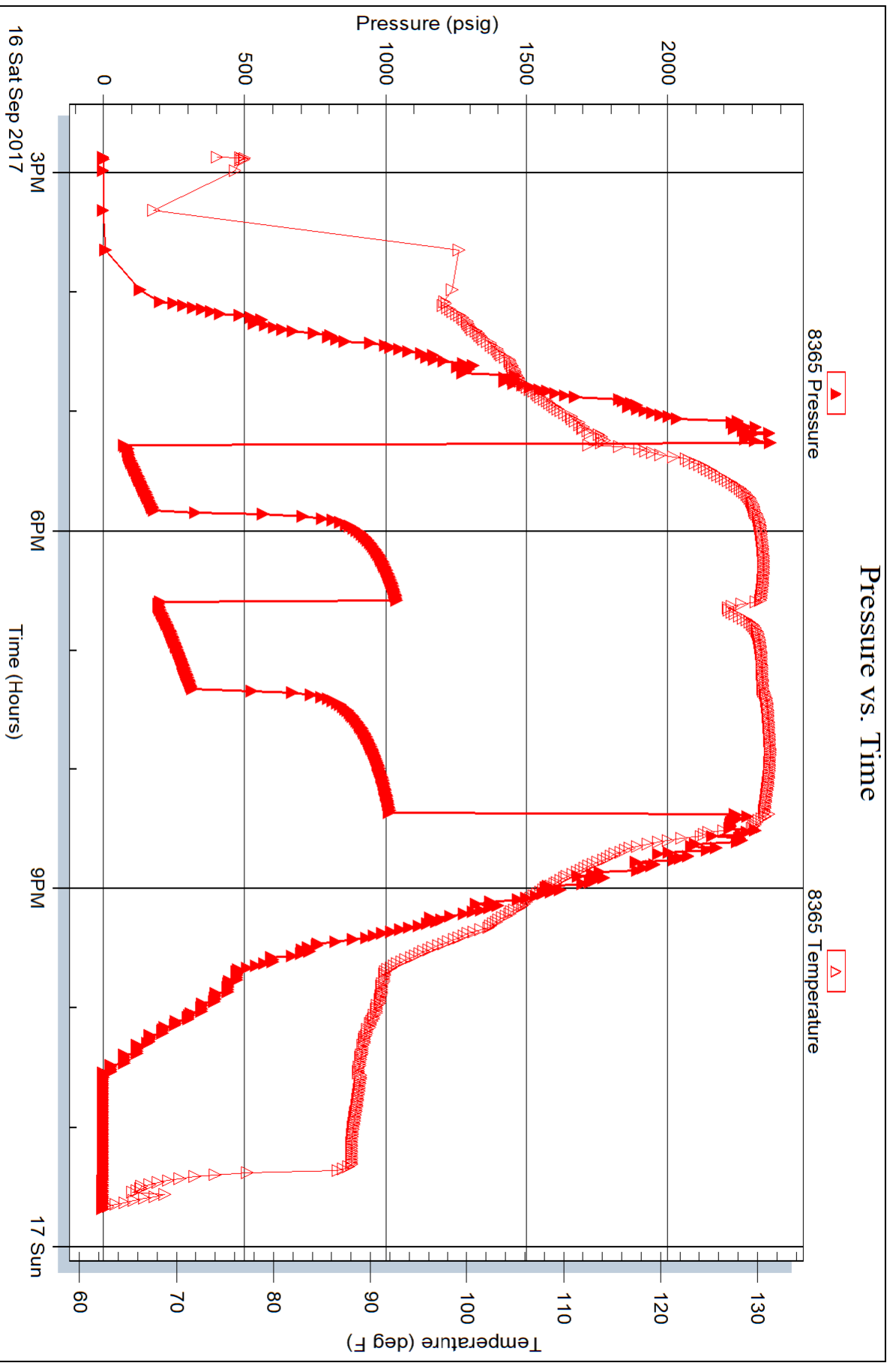
Serial #: 8365

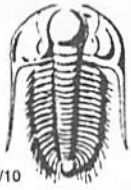
Inside

Stratakan Exploration, LLC

Gaskill-Bertrand 5-1

DST Test Number: 3





TRILOBITE TESTING INC.

1515 Commerce Parkway • Hays, Kansas 67601

Test Ticket

NO. **64224**

Well Name & No. Gaskill Range - Bertrand Unit #5-1 Test No. 1 Date 9/14/2017
 Company Stratikan Exploration, LLC Elevation 3172 KB 3167 GL
 Address 100 S Main Plainville, Ks 67663
 Co. Rep / Geo. Jason T Alm Rig WW #2
 Location: Sec. 5 Twp. 12S Rge. 33W Co. Logan State KS

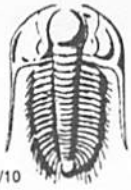
Interval Tested 4290 - 4350 Zone Tested LKC I-5
 Anchor Length 60' Drill Pipe Run 4155 Mud Wt. 9.2
 Top Packer Depth 4285 Drill Collars Run 119 Vis 52
 Bottom Packer Depth 4290 Wt. Pipe Run 0 WL 58
 Total Depth 4350 Chlorides 3500 ppm System LCM 1#
 Blow Description IF 1/2" blow.
IST No return
PF No blow
FSI No return

Rec	Feet of	%gas	%oil	%water	%mud
<u>10</u>	<u>mod v/OFL spots</u>				
Rec	Feet of	%gas	%oil	%water	%mud
Rec	Feet of	%gas	%oil	%water	%mud
Rec	Feet of	%gas	%oil	%water	%mud
Rec	Feet of	%gas	%oil	%water	%mud

Rec Total 10 BHT 115 Gravity — API RW — @ — °F Chlorides — ppm
 (A) Initial Hydrostatic 2142 Test 1150 T-On Location 0315
 (B) First Initial Flow 17 Jars No T-Started 0540
 (C) First Final Flow 17 Safety Joint No T-Open 0933
 (D) Initial Shut-In 125 Circ Sub N/C T-Pulled 1035
 (E) Second Initial Flow 17 Hourly Standby _____ T-Out 1206
 (F) Second Final Flow 40 Mileage ilbnt 87 Comments _____
 (G) Final Shut-In 308 Sampler _____
 (H) Final Hydrostatic 2112 Straddle _____
 Initial Open 30 Shale Packer _____
 Initial Shut-In 30 Extra Packer _____
 Final Flow 30 Extra Recorder _____
 Final Shut-In 30 Day Standby _____
 Accessibility _____
 Sub Total 1237 MP/DST Disc't _____

Approved By _____ Our Representative

Trilobite Testing Inc. shall not be liable for damaged of any kind of the property or personnel of the one for whom a test is made, or for any loss suffered or sustained, directly or indirectly, through the use of its equipment, or its statements or opinion concerning the results of any test, tools lost or damaged in the hole shall be paid for at cost by the party for whom the test is made.



TRILOBITE TESTING INC.

1515 Commerce Parkway • Hays, Kansas 67601

Test Ticket

NO. **64225**

4/10

Well Name & No. Gaskill Range - Bertrand Unit #5.1 Test No. 2 Date 9/15/2017
 Company StrataKan Exploration, LLC Elevation 3172 KB 3167 GL
 Address 100 S Main - Plainville KS 67663
 Co. Rep / Geo. Jason Alm Rig WW #2
 Location: Sec. 5 Twp. 12s Rge. 33w Co. Logan State Ks

Interval Tested 4568 4625 Zone Tested Ft Scott / Myric Station
 Anchor Length 57 Drill Pipe Run 4441 Mud Wt. 9.2
 Top Packer Depth 4563 Drill Collars Run 119 Vis 54
 Bottom Packer Depth 4568 Wt. Pipe Run 8 WL 8.8
 Total Depth 4625 Chlorides 4500 ppm System LCM 3#

Blow Description IF: 11' blow.
ISI: No return.
FF: Surface blow
FSI: No return.

Rec	Feet of	%gas	%oil	%water	%mud
<u>15</u>	<u>0cm</u>		<u>10</u>		<u>90</u>
Rec	Feet of	%gas	%oil	%water	%mud
Rec	Feet of	%gas	%oil	%water	%mud
Rec	Feet of	%gas	%oil	%water	%mud
Rec	Feet of	%gas	%oil	%water	%mud

Rec Total 15 BHT 118 Gravity — API RW — @ — °F Chlorides — ppm
 (A) Initial Hydrostatic 2317 Test 1150 T-On Location 1800
 (B) First Initial Flow 15 Jars — T-Started 1923
 (C) First Final Flow 19 Safety Joint — T-Open 2154
 (D) Initial Shut-In 61 Circ Sub KL T-Pulled 2354
 (E) Second Initial Flow 20 Hourly Standby — T-Out 0156 09/16
 (F) Second Final Flow 23 Mileage 11627 87 Comments —
 (G) Final Shut-In 42 Sampler —
 (H) Final Hydrostatic 2281 Straddle — Ruined Shale Packer —
 Shale Packer — Ruined Packer —
 Extra Packer — Extra Copies 0
 Initial Open 30 Extra Recorder — Sub Total 1237
 Initial Shut-In 30 Day Standby — Total 1237
 Final Flow 30 Accessibility — MP/DST Disc't —
 Final Shut-In 30 Sub Total 1237

Approved By _____ Our Representative [Signature]

Trilobite Testing Inc. shall not be liable for damaged of any kind of the property or personnel of the one for whom a test is made, or for any loss suffered or sustained, directly or indirectly, through the use of its equipment, or its statements or opinion concerning the results of any test, tools lost or damaged in the hole shall be paid for at cost by the party for whom the test is made.



TRILOBITE TESTING INC.

1515 Commerce Parkway • Hays, Kansas 67601

Test Ticket

NO. **64683**

Well Name & No. Gaskill Range - Bertrand Unit #5-1 Test No. 3 Date 9/16/2017
 Company Stratakan Exploration, LLC Elevation 3172 KB 3167 GL
 Address 100 S Main Plainville KS 67663
 Co. Rep / Geo. Jason Alm Rig WW #2
 Location: Sec. 5 Twp. 12s Rge. 33W Co. Logan State Ks

Interval Tested 4645 4700 Zone Tested Johnson.
 Anchor Length 55' Drill Pipe Run 4535 Mud Wt. 9.2
 Top Packer Depth 4648 Drill Collars Run 119 Vis 61
 Bottom Packer Depth 4645 Wt. Pipe Run 0 WL 8.8
 Total Depth 4700 Chlorides 5000 ppm System LCM 2#

Blow Description IF BOB@ 3 min.
TSI BOB@ 15 min.
KF BOB@ open.
RF BOB@ 40 min. Gas to surface

Rec	Feet of	%gas	%oil	%water	%mud
<u>780</u>	<u>60</u>	<u>40%</u>	<u>60%</u>		
<u>120</u>	<u>60CM</u>	<u>45%</u>	<u>25%</u>		<u>30%</u>
	<u>Gas to surface</u>				

Rec Total 900 BHT 131 Gravity 27 API RW — @ — °F Chlorides — ppm

(A) Initial Hydrostatic 2352 Test 1150 T-On Location 1415
 (B) First Initial Flow 61 Jars — T-Started 1452
 (C) First Final Flow 178 Safety Joint — T-Open 1717
 (D) Initial Shut-In 1038 Circ Sub 50 T-Pulled 2020
 (E) Second Initial Flow 204 Hourly Standby — T-Out 2341
 (F) Second Final Flow 314 Mileage 116 RT x 2 87+87 Comments Loaded tools
 (G) Final Shut-In 1014 Sampler — @ 2100 9/17/2017
 (H) Final Hydrostatic 2295 Straddle —
 Ruined Shale Packer —
 Shale Packer — Ruined Packer —
 Extra Packer — Extra Copies —
 Initial Open 30 Extra Recorder — Sub Total 0
 Initial Shut-In 45 Day Standby — Total 1374
 Final Flow 45 Accessibility — MP/DST Disc't —
 Final Shut-In 60 Sub Total 1374

Approved By _____ Our Representative [Signature]
 TriLOBITE TESTING Inc. shall not be liable for damaged of any kind of the property or personnel of the one for whom a test is made, or for any loss suffered or sustained, directly or indirectly, through the use of its equipment, or its statements or opinion concerning the results of any test, tools lost or damaged in the hole shall be paid for at cost by the party for whom the test is made.

Geological Report

Gaskill Range-Bertrand Unit #5-1

56' FSL & 2048' FWL

Sec. 5 T12s R33w

Logan County, Kansas



Gaskill Range-Bertrand Unit #5-1

General Data

Well Data: StrataKan Exploration, LLC.
Gaskill Range-Bertrand Unit #5-1
56' FSL & 2048' FWL
Sec. 5 T12s R33w
Logan County, Kansas
API # 15-109-21524-0000

Drilling Contractor: WW Drilling, Inc. Rig #2

Geologist: Jason T Alm

Spud Date: September 8, 2017

Completion Date: September 18, 2017

Elevation: 3167' Ground Level
3172' Kelly Bushing

Directions: Monument KS, South 5 mi on 350 Rd. East into location.

Casing: 260' 8 5/8" surface casing
4788' 5 1/2" production casing

Samples: 10' wet and dry, 3800' to RTD

Drilling Time: 3700' to RTD

Electric Logs: Pioneer Energy Services "J. Hendrickson

Drillstem Tests: Three, Trilobite Testing, Inc. "Bradley Walter"

Problems: None

Remarks: Deviation 1° @ 4350'. Pipe Strap 1.32 ft long to board @ 4350'.

Formation Tops

Formation	StrataKan Exploration, LLC. Gaskill Range-Bertrand Unit #5-1 Sec. 5 T12s R33w 56' FSL & 2048' FWL
Anhydrite	2656' +516
Base	2679' +493
Topeka	3848' -676
Heebner	4071' -899
Toronto	4096' -924
Lansing	4109' -937
BKC	4409' -1237
Marmaton	4445' -1273
Pawnee	4539' -1367
Fort Scott	4593' -1421
Cherokee	4622' -1450
Johnson	4666' -1494
Morrow	4716' -1554
Mississippian	4732' -1560
RTD	4790' -1618
LTD	4789' -1617

Sample Zone Descriptions

- LKC “I” zone** (4303’, -1131): **Covered in DST #1**
 Ls – Fine crystalline, oolitic with poor oolitic porosity, light to fair scattered oil stain in porosity, no show of free oil, no odor, dull yellow fluorescents, few visible gas bubbles, 20 units hotwire.
- LKC “J” zone** (4328’, -1156): **Covered in DST #1**
 Ls – Fine crystalline, oolitic with scattered poor oomoldic porosity, light brown oil stain in porosity, slight show of free oil when broken, dull yellow fluorescents, 19 units hotwire.
- Fort Scott** (4593’, -1421): **Covered in DST #2**
 Ls – Fine crystalline, oolitic packstone with poor to fair oolitic porosity, light to fair oil stain and saturation in porosity, slight show of free oil when broken, few gas bubbles on break, light to good yellow fluorescents, good cut, 72 units hotwire.
- Johnson** (4666’, -1494): **Covered in DST #3**
 Ls – Fine to sub-crystalline with poor scattered fair vuggy porosity, light to fair oil stain, few pieces with good saturation, show of free oil on cup, light odor, good yellow fluorescents, good cut, 110 units hotwire.

Drill Stem Tests

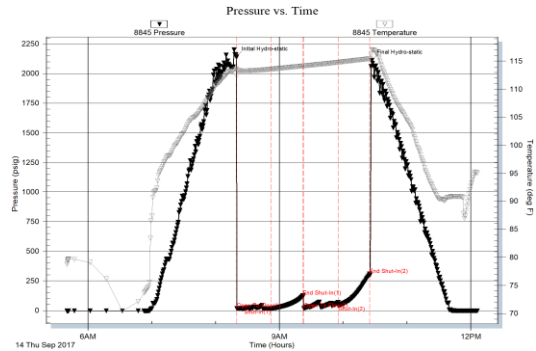
Trilobite Testing, Inc.
"Bradley Walter"

DST #1 LKC "I-J" zones

Interval (4290' – 4350') Anchor Length 60'

IHP	- 2142 #	
IFP	- 30" – Built to ½ in.	17-17 #
ISI	- 30" – Dead	125 #
FFP	- 30" – Dead	17-40 #
FSI	- 30" – Dead	308 #
FHP	- 2112 #	
BHT	- 117°F	

Recovery: 10' Mud

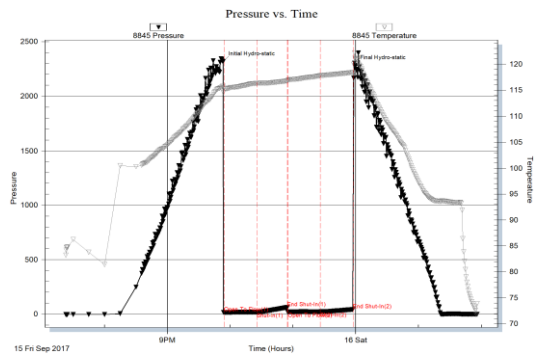


DST #2 Fort Scott / Myrick

Interval (4568' – 4625') Anchor Length 57'

IHP	- 30 #	
IFP	- 30" – Built to 1 in.	15-18 #
ISI	- 30" – Dead	61 #
FFP	- 30" – S. B.	19-23 #
FSI	- 60" – Dead	42 #
FHP	- 2281 #	
BHT	- 121°F	

Recovery: 15' OCM 10% Oil

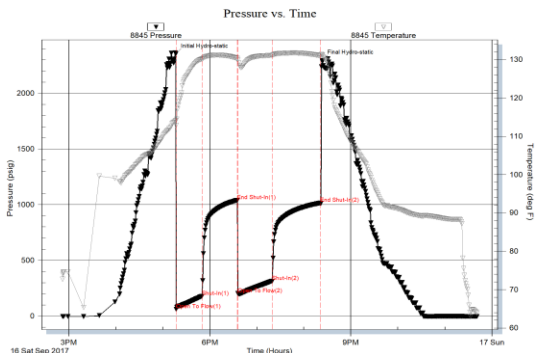


DST #3 Johnson

Interval (4645' – 4700') Anchor Length 55'

IHP	- 2352 #	
IFP	- 30" – B.O.B. 3 min.	61-178 #
ISI	- 45" – B.O.B. 15 min.	1038 #
FFP	- 45" – B.O.B. on open	203-314 #
FSI	- 60" – B.O.B. 40 min.	1014 #
FHP	- 2295 #	
BHT	- 131°F	

Recovery: GTS during final flow
780' GCO 27° API
120' GOCM 25% Oil





Geologic Report

Drilling Time and Sample Log

Operator StrataKan Exploration, LLC.		Elevation KB 3172'
Lease Gaskill Range-Bertrand Unit	No. 5-1	DF 3167'
API # 15-109-21524-0000		Casing Record Surface 8 5/8" @ 260'
Field Wildcat		Production 5 1/2" @ 4788'
Location 56' FSL & 2048' FWL		Electrical Surveys CNL/CDL, DIL, MEL, BHCS
Sec. 5	Twp. 12s	Rge. 33w
County Logan	State Kansas	

Formation	Log Tops	Sample Tops	Struct Comp
Anhydrite	2656' +516	2660' +512	-1
Base	2679' +493	2680' +492	
Topeka	3848' -676	3848' -676	
Heebner	4071' -899	4073' -901	+2
Toronto	4096' -924	4099' -927	+4
Lansing	4109' -937	4112' -940	+4
BKC	4409' -1237	4411' -1239	
Marmaton	4445' -1273	4446' -1274	
Pawnee	4539' -1367	4539' -1367	+1
Fort Scott	4593' -1421	4597' -1425	+6
Cherokee	4622' -1450	4626' -1454	+7
Johnson	4666' -1494	4670' -1498	+7
Morrow	4716' -1554	4720' -1548	
Mississippian	4732' -1560	4736' -1564	+6
Total Depth	4789' -1617	4790' -1618	

Reference Well For Structural Comparison **Abercrombie Drilling Inc. Bertrand D #1**
330' FSL & 2310' FEL Sec. 5 T12s R33w Logan County, Kansas

Drilling Contractor	WW Drilling, Inc. Rig #2	
Commenced	9-8-2017	Completed 9-18-2017
Samples Saved From	3700'	To RTD
Drilling Time Kept From	3800'	To RTD
Samples Examined From	3800'	To RTD
Geological Supervision From	3850'	To RTD

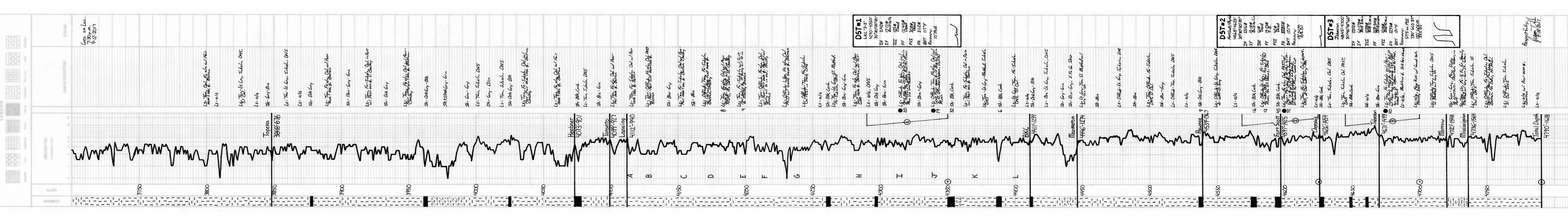
Displacement 3650' Mud Type Chemical

Summary and Recommendations

The location for the Gaskill Range-Bertrand Unit #5-1 was found via 3-D seismic survey. The new well ran structurally as expected via the survey. Three Drill Stem Tests were conducted, one of which recovered commercial amounts of oil from the Cherokee / Johnson Zone. After all gathered data had been examined the decision was made to run a 5 1/2 inch production casing to further evaluate the Gaskill Range-Bertrand Unit #5-1 well.

Respectfully Submitted,

Jason T Alm
Hard Rock Consulting, Inc.



Geo on Loc. 7:30 p.m. 9-12-2017

DEFINITIONS: In these terms and conditions, "Quality" shall mean Quality Oilwell Cementing, Inc., and "Customer" shall refer to the party identified by that term on the front of this contract. As applicable, "Job" relates to the services described on the front side of this contract, "merchandise" refers to the material described on the front of this contract and to any other materials, products, or supplies used, sold, or furnished under the requirements of this contract.

- **TERMS:** Unless satisfactory credit has been established, "CUSTOMER" must tender full cash payment to "QUALITY" before the job is undertaken or merchandise is delivered. If satisfactory credit has been established, the terms of payment for the job and/or merchandise, including bulk cement, are net cash, payable in 30 days from the completion of the job and/or delivery of the merchandise. For all past due invoices, "CUSTOMER" agrees to pay interest on amounts invoiced at a rate of 18 percent per annum until paid. Notwithstanding the foregoing in no event shall this Contract provide for interest exceeding the maximum rate of interest that "CUSTOMER" may agree to pay under applicable law. If any such interest should be provided for, it shall be and hereby is deemed to be a mistake, and this contract shall be automatically reformed to lower the rate of interest to the maximum legal contract rate, any amounts previously paid as excess interest shall be deducted from the amounts owing from the "CUSTOMER" or at the option of "QUALITY," refunded directly to "CUSTOMER." For purposes of this paragraph, QUALITY and CUSTOMER agree that KANSAS law shall apply. Any discounts granted with this contract are null and void if the charges are not paid when due.

- **ATTORNEY FEES:** In any legal action or proceeding between the parties to enforce any of the terms of this Service Contract, or in any way pertaining to the term of this Contract, the prevailing party shall be entitled to recover all expenses, including, but not limit to, a reasonable sum as and attorney's fees.

- **PRICES AND TAXES:** All merchandise listed in "QUALITY'S" current price shall schedule are F.O.B. QUALITY'S local station and are subject to change without notice. All prices are exclusive of any federal, state, local, or special taxes for the sale or use of the merchandise or services listed. The amount of taxes required to be paid by QUALITY shall be added to the quoted prices charged to CUSTOMER.

- **TOWING CHARGES:** QUALITY will make a reasonable attempt to get to and from each job site using its own equipment. Should QUALITY be unable to do so because of poor or inadequate road conditions, and should it become necessary to employ a tractor or other pulling equipment to get to or from the job site, the tractor or pulling equipment will be supplied by CUSTOMER or, if furnished by QUALITY, will be charged to and paid by CUSTOMER.

- **PREPARATION CHARGES:** If a job and/or merchandise is ordered and CUSTOMER cancels the order after preparation of a chemical solution or other material, CUSTOMER will pay QUALITY for the expenses incurred by QUALITY as a result of the cancellation.

- **DEADHAUL CHARGES:** Unless otherwise specified on the front of this Contract, a deadhaul charges as set forth in QUALITY'S current price book will be charged each way for each service unit which is ordered by CUSTOMER but not used.

- **SERVICE CONDITIONS AND LIABILITIES:** 1. QUALITY carries public liability and property damage insurance, but since there are so many uncertain and unknown conditions beyond QUALITY'S control, QUALITY shall not be liable for injuries to property or persons or for loss or damage arising from the performance of the job or delivery of the merchandise. Customer shall be responsible for and indemnify, defend, and hold harmless QUALITY, its officers, agents and employees, from and against any and all claims or suits for:

(A) Damage to property or for bodily injury, sickness, disease, or death, brought by any person, including CUSTOMER and/or the well owner; and:

(B) Oil spills, pollution, surface or sub-surface damage, injury to the well, reservoir loss, or damage arising from a well blowout arising out of or in connection with QUALITY'S performance of the job or furnishing of merchandise in accordance with this contract, unless such loss or damage is caused by the willful misconduct or gross negligence of QUALITY or its employees.

2. With respect to any of QUALITY'S tools, equipment, or instruments which are lost in the well or damaged when performing or attempting to perform the job or, in the case of marine operations, are lost or damaged at any time after delivery to the landing for CUSTOMER and before return to QUALITY at the landing, CUSTOMER shall either recover the lost item without cost to QUALITY or reimburse QUALITY the current replacement cost of the item unless the loss or damage results from the sole negligence of QUALITY or its employees.

3. QUALITY does not assume any liability or responsibility for damages or conditions resulting from chemical action in cements caused by contamination of water or other fluids.

WARRANTIES: 1. QUALITY warrants all merchandise manufactured or furnished by it to be free from defects in material and workmanship under normal use and service when installed, and used, and/or serviced in the manner provided and intended. QUALITY'S obligation under this warranty is expressly limited to repair replacement, or allowance for credit, at its option, for any merchandise which is determined by QUALITY to be defective. THIS IS THE SOLE WARRANTY OF QUALITY AND NO OTHER WARRANTY IS APPLICABLE, EITHER EXPRESS OR OTHERWISE IMPLIED, IN FACT OR IN LAW, INCLUDING ANY WARRANTY AS TO MERCHANTABILITY OR FITNESS FOR A PARTICULAR USE OR PURPOSE, CUSTOMER'S sole and only remedy with regard to any defective merchandise shall be the repair or replacement thereof or allowance for credit as herein provided, and QUALITY shall not be liable for any consequential, special, incidental, or punitive damages resulting from or caused by defective materials, products or supplies.

2. More specifically:

(A) Nothing in this contract shall be construed as a warranty by QUALITY of the success or the effectiveness of the result of any work done or merchandise used, sold, or furnished under this contract.

(B) Nothing in this contract shall be construed as a warranty of the accuracy or correctness of any facts, information, or data furnished by QUALITY or any interpretation of test, meter readings, chart information, analysis or research, or recommendations made by QUALITY, unless the inaccuracy or incorrectness is caused by the willful misconduct or gross negligence of QUALITY or its employees in the preparation or furnishing of such facts, information or data. (C) Work done by QUALITY shall be under the direct supervision and control of the CUSTOMER or his agent and QUALITY will accomplish the job as an independent contractor and not as an employee or agent of the CUSTOMER.

QUALITY OILWELL CEMENTING, INC.

Federal Tax I.D.# 20-2886107

Phone 785-483-2025
Cell 785-324-1041

Home Office P.O. Box 32 Russell, KS 67665

No. 391

Date	Sec.	Twp.	Range	County	State	On Location	Finish
9-18-17	5	12	33	Logan	KS		9:45am

Location Monument 45 BHP

Lease <u>CANSKILL</u>	Well No. <u>5-1</u>	Owner
Contractor <u>WW #2</u>		To Quality Oilwell Cementing, Inc. You are hereby requested to rent cementing equipment and furnish cementer and helper to assist owner or contractor to do work as listed.
Type Job <u>DV JOB</u>		
Hole Size <u>7 7/8</u>	T.D. <u>4790</u>	Charge To <u>Statakan Exploration</u>
Csg. <u>5 1/2 1550#</u>	Depth <u>4784</u>	Street
Tbg. Size	Depth	City State
Tool <u>DV Tool 49</u>	Depth <u>2707</u>	The above was done to satisfaction and supervision of owner agent or contractor.
Cement Left in Csg. <u>42.51</u>	Shoe Joint <u>42.51</u>	Cement Amount Ordered <u>150 Q-PRO-C</u>

Meas Line	Displace <u>112 3/4 BCL</u>	500gal mud clear 10BL KCL
EQUIPMENT		
Pumptrk <u>20</u> No.	Cementer <u>1019</u>	Common <u>150 Q-pro-C</u>
Bulktrk <u>15</u> No.	Helper <u>BRIT</u>	Poz. Mix
Bulktrk <u>19</u> No.	Driver <u>SEIDAN</u>	Gel.
	Driver <u>DAVID</u>	Calcium <u>KCL 1 gal</u>

JOB SERVICES & REMARKS

Remarks:	Salt <u>13</u>
Rat Hole	Flowseal
Mouse Hole	Kol-Seal <u>750#</u>
Centralizers	Mud CLR 48 <u>500 gal</u>
Baskets	CFL-117 or CD110 <u>CAF 38</u>
D/V or Port Collar	Sand
<u>5 1/2 set @ 4784 - Ball @ 4741.50</u>	Handling <u>170</u>
<u>Est. Circulation Pump 500gal mud clear</u>	Mileage

FLOAT EQUIPMENT

<u>1 10 BL KCL Cement 5 1/2 with 1500#</u>	Guide Shoe
<u>Displace Plug with 5 1/2 water</u>	Centralizer <u>7</u>
<u>5 1/2 BL mud & 5 BL water to land plug.</u>	Baskets <u>3</u>
<u>2 1/2 pressure test.</u>	AFU insert <u>DV Tool</u>
<u>Land Plug @ 1500#</u>	Float Shoe <u>1</u>
<u>Drop Log + open DV Tool</u>	Latch Down <u>1</u>
<u>Est. Circulation - Circulate 1 HR.</u>	

Pumptrk Charge	<u>prod string</u>	<u>Bottom Stage</u>
Mileage	<u>16</u>	

X Signature <u>Randy Papp</u>	Tax
	Discount
	Total Charge

GENERAL TERMS AND CONDITIONS

DEFINITIONS: In these terms and conditions, "Quality" shall mean Quality Oilwell Cementing, Inc., and "Customer" shall refer to the party identified by that term on the front of this contract. As applicable, "Job" relates to the services described on the front side of this contract, "merchandise" refers to the material described on the front of this contract and to any other materials, products, or supplies used, sold, or furnished under the requirements of this contract.

– TERMS: Unless satisfactory credit has been established, "CUSTOMER" must tender full cash payment to "QUALITY" before the job is undertaken or merchandise is delivered. If satisfactory credit has been established, the terms of payment for the job and/or merchandise, including bulk cement, are net cash, payable in 30 days from the completion of the job and/or delivery of the merchandise. For all past due invoices, "CUSTOMER" agrees to pay interest on amounts invoiced at a rate of 18 percent per annum until paid. Notwithstanding the foregoing in no event shall this Contract provide for interest exceeding the maximum rate of interest that "CUSTOMER" may agree to pay under applicable law. If any such interest should be provided for, it shall be and hereby is deemed to be a mistake, and this contract shall be automatically reformed to lower the rate of interest to the maximum legal contract rate, any amounts previously paid as excess interest shall be deducted from the amounts owing from the "CUSTOMER" or at the option of "QUALITY," refunded directly to "CUSTOMER." For purposes of this paragraph, QUALITY and CUSTOMER agree that KANSAS law shall apply. Any discounts granted with this contract are null and void if the charges are not paid when due.

– ATTORNEY FEES: In any legal action or proceeding between the parties to enforce any of the terms of this Service Contract, or in any way pertaining to the term of this Contract, the prevailing party shall be entitled to recover all expenses, including, but not limit to, a reasonable sum as and attorney's fees.

– PRICES AND TAXES: All merchandise listed in "QUALITY'S" current price schedule are F.O.B. QUALITY'S local station and are subject to change without notice. All prices are exclusive of any federal, state, local, or special taxes for the sale or use of the merchandise or services listed. The amount of taxes required to be paid by QUALITY shall be added to the quoted prices charged to CUSTOMER.

– TOWING CHARGES: QUALITY will make a reasonable attempt to get to and from each job site using its own equipment. Should QUALITY be unable to do so because of poor or inadequate road conditions, and should it become necessary to employ a tractor or other pulling equipment to get to or from the job site, the tractor or pulling equipment will be supplied by CUSTOMER or, if furnished by QUALITY, will be charged to and paid by CUSTOMER.

– PREPARATION CHARGES: If a job and/or merchandise is ordered and CUSTOMER cancels the order after preparation of a chemical solution or other material, CUSTOMER will pay QUALITY for the expenses incurred by QUALITY as a result of the cancellation.

– DEADHAUL CHARGES: Unless otherwise specified on the front of this Contract, a deadhaul charges as set forth in QUALITY'S current price book will be charged each way for each service unit which is ordered by CUSTOMER but not used.

– SERVICE CONDITIONS AND LIABILITIES: 1. QUALITY carries public liability and property damage insurance, but since there are so many uncertain and unknown conditions beyond QUALITY'S control, QUALITY shall not be liable for injuries to property or persons or for loss or damage arising from the performance of the job or delivery of the merchandise. Customer shall be responsible for and indemnify, defend, and hold harmless QUALITY, its officers, agents and employees, from and against any and all claims or suits for:

(A) Damage to property or for bodily injury, sickness, disease, or death, brought by any person, including CUSTOMER and/or the well owner; and:

(B) Oil spills, pollution, surface or sub-surface damage, injury to the well, reservoir loss, or damage arising from a well blowout arising out of or in connection with QUALITY'S performance of the job or furnishing of merchandise in accordance with this contract, unless such loss or damage is caused by the willful misconduct or gross negligence of QUALITY or its employees.

2. With respect to any of QUALITY'S tools, equipment, or instruments which are lost in the well or damaged when performing or attempting to perform the job or, in the case of marine operations, are lost or damaged at any time after delivery to the landing for CUSTOMER and before return to QUALITY at the landing, CUSTOMER shall either recover the lost item without cost to QUALITY or reimburse QUALITY the current replacement cost of the item unless the loss or damage results from the sole negligence of QUALITY or its employees.

3. QUALITY does not assume any liability or responsibility for damages or conditions resulting from chemical action in cements caused by contamination of water or other fluids.

WARRANTIES: 1. QUALITY warrants all merchandise manufactured or furnished by it to be free from defects in material and workmanship under normal use and service when installed, and used, and/or serviced in the manner provided and intended. QUALITY'S obligation under this warranty is expressly limited to repair replacement, or allowance for credit, at its option, for any merchandise which is determined by QUALITY to be defective. THIS IS THE SOLE WARRANTY OF QUALITY AND NO OTHER WARRANTY IS APPLICABLE, EITHER EXPRESS OR OTHERWISE IMPLIED, IN FACT OR IN LAW, INCLUDING ANY WARRANTY AS TO MERCHANTABILITY OR FITNESS FOR A PARTICULAR USE OR PURPOSE, CUSTOMER'S sole and only remedy with regard to any defective merchandise shall be the repair or replacement thereof or allowance for credit as herein provided, and QUALITY shall not be liable for any consequential, special, incidental, or punitive damages resulting from or caused by defective materials, products or supplies.

2. More specifically:

(A) Nothing in this contract shall be construed as a warranty by QUALITY of the success or the effectiveness of the result of any work done or merchandise used, sold, or furnished under this contract.

(B) Nothing in this contract shall be construed as a warranty of the accuracy or correctness of any facts, information, or data furnished by QUALITY or any interpretation of test, meter readings, chart information, analysis or research, or recommendations made by QUALITY, unless the inaccuracy or incorrectness is caused by the willful misconduct or gross negligence of QUALITY or its employees in the preparation or furnishing of such facts, information or data. (C) Work done by QUALITY shall be under the direct supervision and control of the CUSTOMER or his agent and QUALITY will accomplish the job as an independent contractor and not as an employee or agent of the CUSTOMER.

QUALITY OILWELL CEMENTING, INC.

Federal Tax I.D.# 20-2886107

Phone 785-483-2025
Cell 785-324-1041

Home Office P.O. Box 32 Russell, KS 67665

No. 392

Date	Sec.	Twp.	Range	County	State	On Location	Finish
9-18-17	5	12	33	Logan	KS		12:15pm

Location Monument 45 Pinto

Lease <u>Caskill</u>	Well No. <u>5-1</u>	Owner
Contractor <u>WW#2</u>		To Quality Oilwell Cementing, Inc. You are hereby requested to rent cementing equipment and furnish cementer and helper to assist owner or contractor to do work as listed.
Type Job <u>DV 200</u>		Charge To <u>Strataken Exploration</u>
Hole Size <u>7 7/8</u>	T.D. <u>4790</u>	Street
Csg. <u>5 1/2</u>	Depth <u>4784</u>	City
Tbg. Size	Depth	State
Tool <u>DV Test 49</u>	Depth <u>2707</u>	The above was done to satisfaction and supervision of owner agent or contractor.
Cement Left in Csg. <u>4251</u>	Shoe Joint <u>4251</u>	Cement Amount Ordered <u>150 @ 20 QMDC 1/4 #10</u>
Meas Line	Displace <u>604 1/2 BBL</u>	Common <u>150 @ 20 QMDC</u>

EQUIPMENT

Pumptrk <u>20</u>	No.	Cementer		Poz. Mix.
		Helper		
Bulktrk <u>15</u>	No.	Driver		Gel.
		Driver		
Bulktrk <u>19</u>	No.	Driver		Calcium
		Driver		

JOB SERVICES & REMARKS

Remarks:	Hulls
Rat Hole <u>3 size</u>	Salt
Mouse Hole	Flowseal <u>125 #</u>
Centralizers	Kol-Seal
Baskets	Mud CLR 48
D/V or Port Collar	CFL-117 or CD110 CAF 38
<u>Digital @ 2707 Plug Rate hole w/ 30% cement</u>	Sand
<u>5 1/2 with back.</u>	Handling <u>450</u>
<u>Displace Plug</u>	Mileage

FLOAT EQUIPMENT

<u>Cement Circulated!</u>	Guide Shoe
<u>Plug land @ 1500 #</u>	Centralizer <u>7</u>
	Baskets <u>3</u>
	AFU Inserts
	Float Shoe
	Latch Down

Pumptrk Charge Prod String Top Stage
Mileage 6

	Tax
	Discount
X Signature <u>Ruby P. H.</u>	Total Charge

DEFINITIONS: In these terms and conditions, "Quality" shall mean Quality Oilwell Cementing, Inc., and "Customer" shall refer to the party identified by that term on the front of this contract. As applicable, "Job" relates to the services described on the front side of this contract, "merchandise" refers to the material described on the front of this contract and to any other materials, products, or supplies used, sold, or furnished under the requirements of this contract.

TERMS: Unless satisfactory credit has been established, "CUSTOMER" must tender full cash payment to "QUALITY" before the job is undertaken or merchandise is delivered. If satisfactory credit has been established, the terms of payment for the job and/or merchandise, including bulk cement, are net cash, payable in 30 days from the completion of the job and/or delivery of the merchandise. For all past-due invoices, "CUSTOMER" agrees to pay interest on amounts invoiced at a rate of 18 percent per annum until paid. Notwithstanding the foregoing in no event shall this Contract provide for interest exceeding the maximum rate of interest that "CUSTOMER" may agree to pay under applicable law. If any such interest should be provided for, it shall be and hereby is deemed to be a mistake, and this contract shall be automatically reformed to lower the rate of interest to the maximum legal contract rate, any amounts previously paid as excess interest shall be deducted from the amounts owing from the "CUSTOMER" or at the option of "QUALITY," refunded directly to "CUSTOMER." For purposes of this paragraph, QUALITY and CUSTOMER agree that KANSAS law shall apply. Any discounts granted with this contract are null and void if the charges are not paid when due.

- **ATTORNEY FEES:** In any legal action or proceeding between the parties to enforce any of the terms of this Service Contract, or in any way pertaining to the term of this Contract, the prevailing party shall be entitled to recover all expenses, including, but not limit to, a reasonable sum as and attorney's fees.

- **PRICES AND TAXES:** All merchandise listed in "QUALITY'S" current price shall schedule are F.O.B. QUALITY'S local station and are subject to change without notice. All prices are exclusive of any federal, state, local, or special taxes for the sale or use of the merchandise or services listed. The amount of taxes required to be paid by QUALITY shall be added to the quoted prices charged to CUSTOMER.

- **TOWING CHARGES:** QUALITY will make a reasonable attempt to get to and from each job site using its own equipment. Should QUALITY be unable to do so because of poor or inadequate road conditions, and should it become necessary to employ a tractor or other pulling equipment to get to or from the job site, the tractor or pulling equipment will be supplied by CUSTOMER or, if furnished by QUALITY, will be charged to and paid by CUSTOMER.

- **PREPARATION CHARGES:** If a job and/or merchandise is ordered and CUSTOMER cancels the order after preparation of a chemical solution or other material, CUSTOMER will pay QUALITY for the expenses incurred by QUALITY as a result of the cancellation.

- **DEADHAUL CHARGES:** Unless otherwise specified on the front of this Contract, a deadhaul charges as set forth in QUALITY'S current price book will be charged each way for each service unit which is ordered by CUSTOMER but not used.

- **SERVICE CONDITIONS AND LIABILITIES:** 1. QUALITY carries public liability and property damage insurance, but since there are so many uncertain and unknown conditions beyond QUALITY'S control, QUALITY shall not be liable for injuries to property or persons or for loss or damage arising from the performance of the job or delivery of the merchandise. Customer shall be responsible for and indemnify, defend, and hold harmless QUALITY, its officers, agents and employees, from and against any and all claims or suits for:

(A) Damage to property or for bodily injury, sickness, disease, or death, brought by any person, including CUSTOMER and/or the well owner; and:

(B) Oil spills, pollution, surface or sub-surface damage, injury to the well, reservoir loss, or damage arising from a well blowout arising out of or in connection with QUALITY'S performance of the job or furnishing of merchandise in accordance with this contract, unless such loss or damage is caused by the willful misconduct or gross negligence of QUALITY or its employees.

2. With respect to any of QUALITY'S tools, equipment, or instruments which are lost in the well or damaged when performing or attempting to perform the job or, in the case of marine operations, are lost or damaged at any time after delivery to the landing for CUSTOMER and before return to QUALITY at the landing, CUSTOMER shall either recover the lost item without cost to QUALITY or reimburse QUALITY the current replacement cost of the item unless the loss or damage results from the sole negligence of QUALITY or its employees.

3. QUALITY does not assume any liability or responsibility for damages or conditions resulting from chemical action in cements caused by contamination of water or other fluids.

WARRANTIES: 1. QUALITY warrants all merchandise manufactured or furnished by it to be free from defects in material and workmanship under normal use and service when installed, and used, and/or serviced in the manner provided and intended. QUALITY'S obligation under this warranty is expressly limited to repair replacement, or allowance for credit, at its option, for any merchandise which is determined by QUALITY to be defective. THIS IS THE SOLE WARRANTY OF QUALITY AND NO OTHER WARRANTY IS APPLICABLE, EITHER EXPRESS OR OTHERWISE IMPLIED, IN FACT OR IN LAW, INCLUDING ANY WARRANTY AS TO MERCHANTABILITY OR FITNESS FOR A PARTICULAR USE OR PURPOSE, CUSTOMER'S sole and only remedy with regard to any defective merchandise shall be the repair or replacement thereof or allowance for credit as herein provided, and QUALITY shall not be liable for any consequential, special, incidental, or punitive damages resulting from or caused by defective materials, products or supplies.

2. More specifically:

(A) Nothing in this contract shall be construed as a warranty by QUALITY of the success or the effectiveness of the result of any work done or merchandise used, sold, or furnished under this contract.

(B) Nothing in this contract shall be construed as a warranty of the accuracy or correctness of any facts, information, or data furnished by QUALITY or any interpretation of test, meter readings, chart information, analysis or research, or recommendations made by QUALITY, unless the inaccuracy or incorrectness is caused by the willful misconduct or gross negligence of QUALITY or its employees in the preparation or furnishing of such facts, information or data. (C) Work done by QUALITY shall be under the direct supervision and control of the CUSTOMER or his agent and QUALITY will accomplish the job as an independent contractor and not as an employee or agent of the CUSTOMER.

QUALITY OILWELL CEMENTING, INC.

Federal Tax I.D.# 20-2886107

Phone 785-483-2025
Cell 785-324-1041

Home Office P.O. Box 32 Russell, KS 67665

No. 379

Date	9-8-17	Sec.	5	Twp.	12	Range	33	County	Logan	State	KS	On Location		Finish	9:30pm
------	--------	------	---	------	----	-------	----	--------	-------	-------	----	-------------	--	--------	--------

Lease *Bebrand unit Gaskill Range* Well No. *5-1* Location *Monument 3500 4 1/2 S Einto*

Contractor *WW#2* Owner *To Quality Oilwell Cementing, Inc.*
 Type Job *Surface* You are hereby requested to rent cementing equipment and furnish cementer and helper to assist owner or contractor to do work as listed.

Hole Size *12 1/4* T.D. *260* Charge To *Stratagan Exploration*
 Csg. *8 5/8 20#* Depth *259* Street

Tbg. Size Depth City State

Tool Depth The above was done to satisfaction and supervision of owner agent or contractor.

Cement Left in Csg. Shoe Joint Cement Amount Ordered *170 8/20 3 1/2 c 2 1/2 GEL*

Meas Line Displace *16BL*

EQUIPMENT				Common
Pumptrk	<i>20</i>	No.	Cementer <i>raig</i>	<i>136</i>
			Helper <i>Brett</i>	<i>34</i>
Bulktrk		No.	Driver <i>Brett</i>	<i>3</i>
			Driver	<i>6</i>
Bulktrk	<i>14</i>	No.	Driver <i>Jordan</i>	
			Driver	

JOB SERVICES & REMARKS

Remarks:

Rat Hole

Mouse Hole

Centralizers

Baskets

D/V or Port Collar

8 5/8 on bottom Est Circulation.

Mix 120SKY Displace

Cement (circulated)

FLOAT EQUIPMENT

Guide Shoe

Centralizer

Baskets

AFU Inserts

Float Shoe

Latch Down

Pumptrk Charge *Surface*

Mileage *16*

Signature *[Signature]*

Tax

Discount

Total Charge

Conservation Division
266 N. Main St., Ste. 220
Wichita, KS 67202-1513



Phone: 316-337-6200
Fax: 316-337-6211
<http://kcc.ks.gov/>

Pat Apple, Chairman
Shari Feist Albrecht, Commissioner
Jay Scott Emler, Commissioner

Sam Brownback, Governor

January 11, 2018

Justin R. Prater
StrataKan Exploration, LLC
100 S MAIN
PLAINVILLE, KS 67663

Re: ACO-1
API 15-109-21524-00-00
GASKILL RANGE-BERTRAND UNIT 5-1
SW/4 Sec.05-12S-33W
Logan County, Kansas

Dear Justin R. Prater :

K.A.R. 82-3-107 provides for all completion information to be filed within 120 days of the spud date. Subsection(e)(2) of that regulation states "All rights to confidentiality shall be lost if the filings are not timely."

The above referenced well was spudded on 9/8/2017 and the ACO-1 was received on January 11, 2018 (not within the 120 days timely requirement).

Therefore, your request for confidential treatment of data contained within the ACO-1 filing cannot be granted at this time.

If you should have any questions, please do not hesitate to contact me at (316)337-6200.

Sincerely,

Production Department