

KANSAS CORPORATION COMMISSION
OIL & GAS CONSERVATION DIVISION

Form must be Typed
Form must be signed

TEMPORARY ABANDONMENT WELL APPLICATION

All blanks must be complete

OPERATOR: License#
Name:
Address 1:
Address 2:
City: State: Zip:
Contact Person:
Phone:
Contact Person Email:
Field Contact Person:
Field Contact Person Phone:

API No. 15-
Spot Description:
Sec. Twp. S. R.
feet from N / S Line of Section
feet from E / W Line of Section
GPS Location: Lat: , Long:
Datum: NAD27 NAD83 WGS84
County: Elevation: GL KB
Lease Name: Well #:
Well Type: (check one) Oil Gas OG WSW Other:
SWD Permit #: ENHR Permit #:
Gas Storage Permit #:
Spud Date: Date Shut-In:

Table with 7 columns: Conductor, Surface, Production, Intermediate, Liner, Tubing. Rows include Size, Setting Depth, Amount of Cement, Top of Cement, Bottom of Cement.

Casing Fluid Level from Surface: How Determined? Date:
Casing Squeeze(s): to w / sacks of cement, to w / sacks of cement. Date:
Do you have a valid Oil & Gas Lease? Yes No
Depth and Type: Junk in Hole at Tools in Hole at Casing Leaks: Yes No Depth of casing leak(s):
Type Completion: ALT. I ALT. II Depth of: DV Tool: w / sacks of cement Port Collar: w / sack of cement
Packer Type: Size: Inch Set at: Feet
Total Depth: Plug Back Depth: Plug Back Method:

Geological Data:

Table with 4 columns: Formation Name, Formation Top, Formation Base, Completion Information. Rows 1 and 2.

UNDER PENALTY OF PERJURY I HEREBY ATTEST THAT THE INFORMATION CONTAINED HEREIN IS TRUE AND CORRECT TO THE BEST OF MY KNOWLEDGE

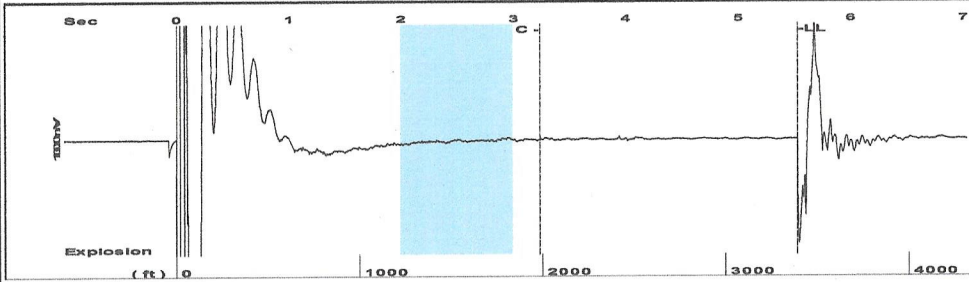
Submitted Electronically

Do NOT Write in This Space - KCC USE ONLY
Date Tested: Results: Date Plugged: Date Repaired: Date Put Back in Service:
Review Completed by: Comments:
TA Approved: Yes Denied Date:

Mail to the Appropriate KCC Conservation Office:

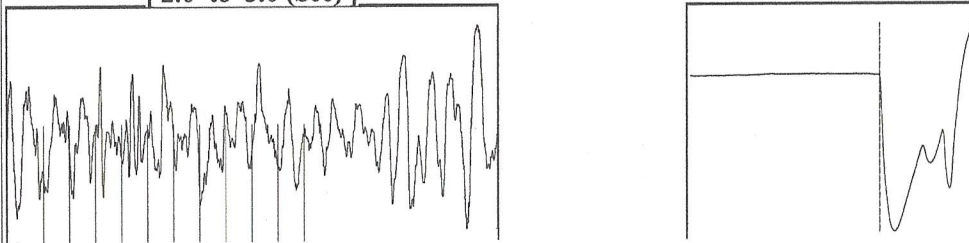
Table with 3 columns: District Office #, Address, Phone. Rows 1-4.

Group: MyWells Well: Garden City B #8 (acquired on: 01/15/18 09:34:25)



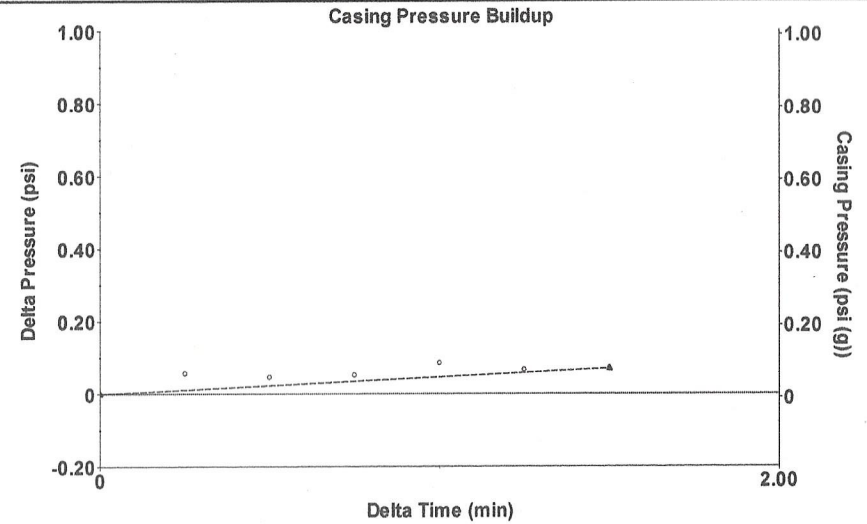
Filter Type High Pass Automatic Collar Count Yes Time 5.53 sec
 Manual Acoustic Veloc 1191.73 ft/s Manual JTS/sec 18.797 Joints 106.996 Jts
 Depth 3391.77 ft

[2.0 to 3.0 (Sec)]



Analysis Method: Automatic

Group: MyWells Well: Garden City B #8 (acquired on: 01/15/18 09:34:25)

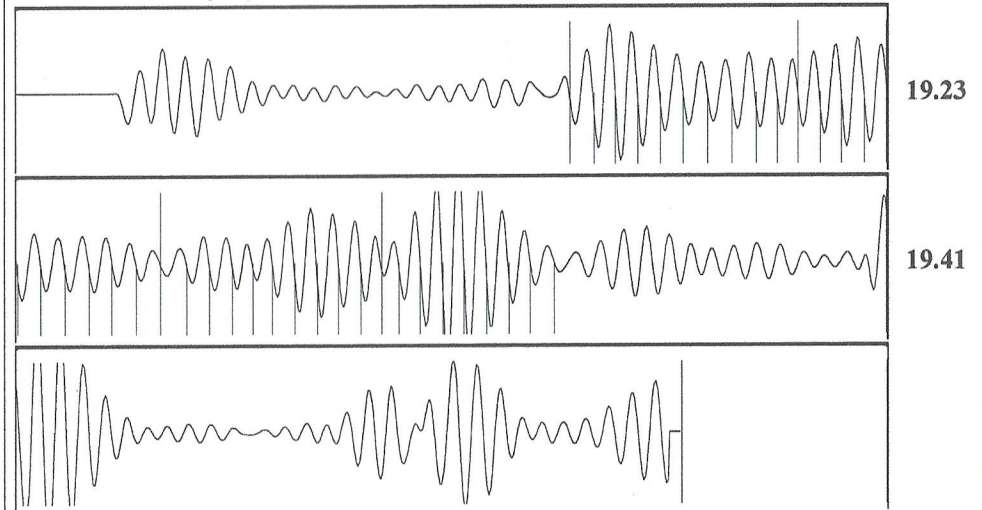


Change in Pressure 0.07 psi PT15504
 Change in Time 1.50 min Range 0 - ? psi

Group: MyWells Well: Garden City B #8 (acquired on: 01/15/18 09:34:25)

Production Current	Potential	Casing Pressure	Producing
Oil 0	- * - BBL/D	0.0 psi (g)	Annular Gas Flow
Water 0	- * - BBL/D	Casing Pressure Buildup	- * - Mscf/D
Gas 0.0	- * - Mscf/D	0.070 psi	% Liquid
		1.50 min	100 %
IPR Method	Vogel	Gas/Liquid Interface Pressure	
PBHP/SBHP	- * -	1.4 psi (g)	
Production Efficiency	0.0	Liquid Level Depth	
		3391.77 ft	
Oil 39 deg.API		Pump Intake Depth	
Water 1.05 Sp.Gr.H2O		- * - ft	
Gas 0.77 Sp.Gr.AIR		Formation Depth	
		4323.00 ft	
Acoustic Velocity	1226.68 ft/s		
Formation Submergence			
Total Gaseous Liquid Column HT (TVD)	931 ft		
Equivalent Gas Free Liquid HT (TVD)	931 ft		
Acoustic Test			
		Pump Intake	
		- * - psi (g)	
		Producing BHP	
		424.7 psi (g)	
		Static BHP	
		- * - psi (g)	

Group: MyWells Well: Garden City B #8 (acquired on: 01/15/18 09:34:25)



Acoustic Velocity 1226.68 ft/s Joints counted 38
 Joints Per Second 19.3483 jts/sec Joints to liquid level 106.996
 Depth to liquid level 3391.77 ft Filter Width 16.797 20.797
 Automatic Collar Count Yes Time to 1st Collar 1.272 3.236

January 16, 2018

Kent Strube
Hartman Oil Co., Inc.
10500 E BERKELEY SQ PKWY STE 100
WICHITA, KS 67206

Re: Temporary Abandonment
API 15-055-20059-00-00
GARDEN CITY B 8
SE/4 Sec.05-22S-33W
Finney County, Kansas

Dear Kent Strube:

"Your temporary abandonment (TA) application for the well listed above has been approved. In accordance with K.A.R. 82-3-111 the TA status of this well will expire 01/16/2019.

- * If you return this well to service or plug it, please notify the District Office.
- * If you sell this well you are required to file a Transfer of Operator form, T-1.
- * If the well will remain temporarily abandoned, you must submit a new TA application, CP-111, before 01/16/2019.

You may contact me at the number above if you have questions.

Very truly yours,

Michael Maier"