

KANSAS CORPORATION COMMISSION
OIL & GAS CONSERVATION DIVISION

TEMPORARY ABANDONMENT WELL APPLICATION

OPERATOR: License#
Name:
Address 1:
Address 2:
City: State: Zip:
Contact Person:
Phone:
Contact Person Email:
Field Contact Person:
Field Contact Person Phone:

API No. 15-
Spot Description:
Sec. Twp. S. R.
feet from N / S Line of Section
feet from E / W Line of Section
GPS Location: Lat: , Long:
Datum: NAD27 NAD83 WGS84
County: Elevation: GL KB
Lease Name: Well #:
Well Type: Oil Gas OG WSW Other:
SWD Permit #: ENHR Permit #:
Gas Storage Permit #:
Spud Date: Date Shut-In:

Table with 7 columns: Conductor, Surface, Production, Intermediate, Liner, Tubing. Rows include Size, Setting Depth, Amount of Cement, Top of Cement, Bottom of Cement.

Casing Fluid Level from Surface: How Determined? Date:
Casing Squeeze(s): to w / sacks of cement, to w / sacks of cement. Date:
Do you have a valid Oil & Gas Lease? Yes No
Depth and Type: Junk in Hole at Tools in Hole at Casing Leaks: Yes No Depth of casing leak(s):
Type Completion: ALT. I ALT. II Depth of: DV Tool: w / sacks of cement Port Collar: w / sack of cement
Packer Type: Size: Inch Set at: Feet
Total Depth: Plug Back Depth: Plug Back Method:

Geological Data:

Table with 4 columns: Formation Name, Formation Top, Formation Base, Completion Information. Rows 1 and 2.

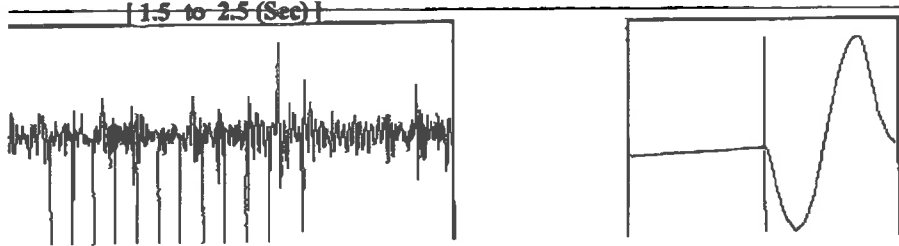
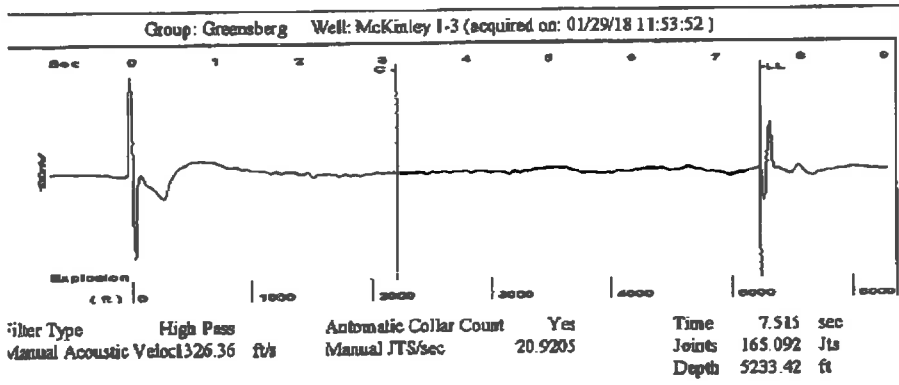
UNDER PENALTY OF PERJURY I HEREBY ATTEST THAT THE INFORMATION CONTAINED HEREIN IS TRUE AND CORRECT TO THE BEST OF MY KNOWLEDGE

Submitted Electronically

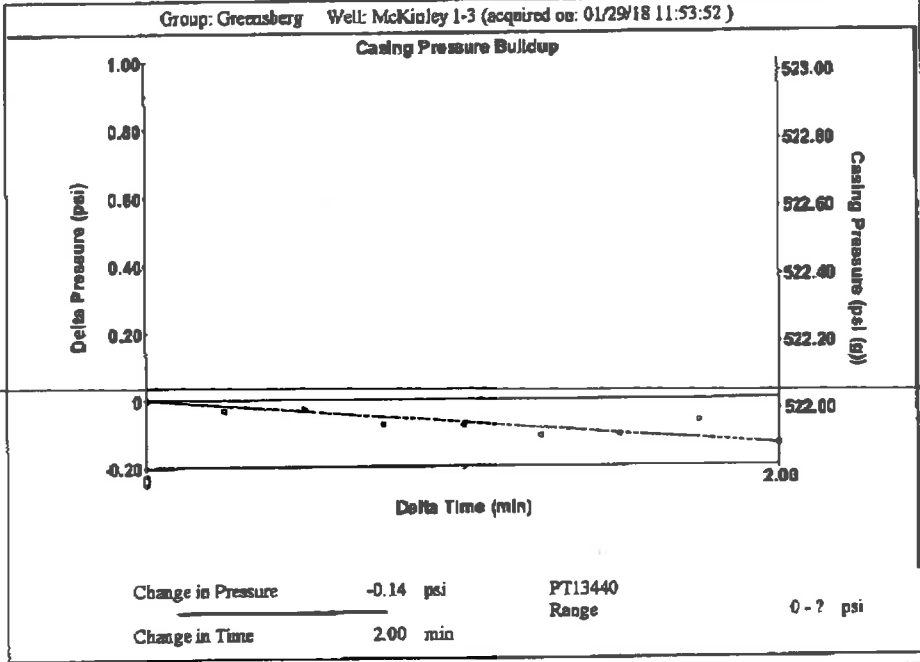
Do NOT Write in This Space - KCC USE ONLY
Date Tested: Results: Date Plugged: Date Repaired: Date Put Back in Service:
Review Completed by: Comments:
TA Approved: Yes Denied Date:

Mail to the Appropriate KCC Conservation Office:

Table with 3 columns: District Office, Address, Phone. Rows for District Office #1, #2, #3, #4.

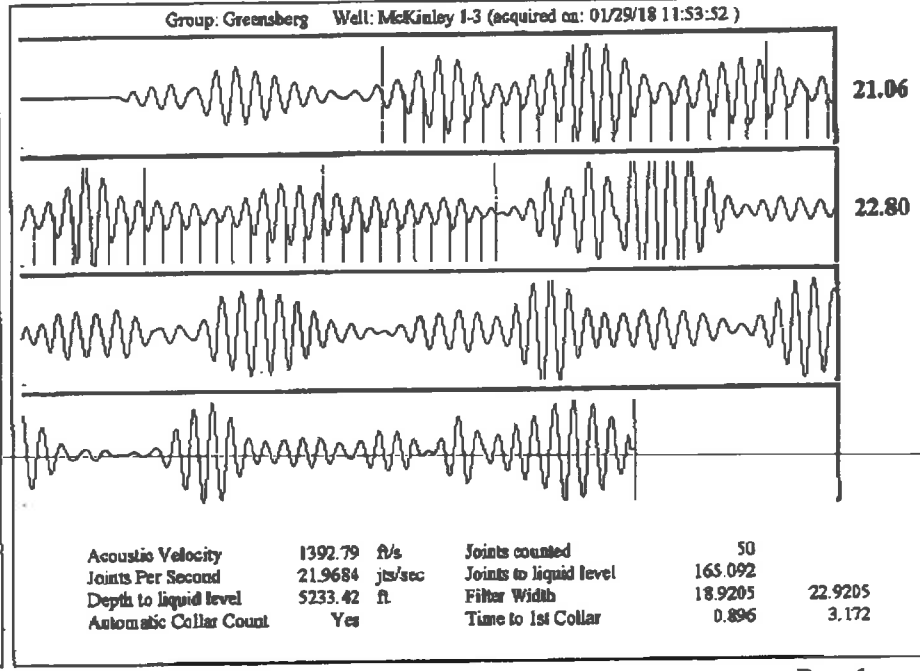


Analysis Method: Automatic



Group: Greensberg Well: McKinley 1-3 (acquired on: 01/29/18 11:53:52)

Production Current	Potential	Casing Pressure	Producing
Oil -.-	-.- BBL/D	522.0 psi (g)	
Water -.-	-.- BBL/D	Casing Pressure Buildup	Angular Gas Flow
Gas -.-	-.- Mscf/D	-0.136 psi	-.- Mscf/D
		2.00 min	% Liquid
		Gas/Liquid Interface Pressure	100 %
		585.0 psi (g)	
IPR Method	Vogel	Liquid Level Depth	
FBHP/SBHP	-.-	5233.42 ft	
Production Efficiency	0.0	Pump Intake Depth	
		-.- ft	
Oil 40 deg.API		Formation Depth	
Water 1.05 Sp.Gr.H2O		4859.00 ft	
Gas 0.60 Sp.Gr.AIR			
Acoustic Velocity	1392.79 ft/s		
Formation Submergence			
Total Gaseous Liquid Column HT (TVD)	-.- ft		
Equivalent Gas Free Liquid HT (TVD)	-.- ft		
Acoustic Test			



January 30, 2018

Margery L. Nagel  
F. G. Holl Company L.L.C.  
9431 E CENTRAL STE 100  
WICHITA, KS 67206-2563

Re: Temporary Abandonment  
API 15-097-21669-00-01  
MCKINLEY 1-3  
SW/4 Sec.03-29S-18W  
Kiowa County, Kansas

Dear Margery L. Nagel:

"Your temporary abandonment (TA) application for the well listed above has been approved. In accordance with K.A.R. 82-3-111 the TA status of this well will expire 01/30/2019.

- \* If you return this well to service or plug it, please notify the District Office.
- \* If you sell this well you are required to file a Transfer of Operator form, T-1.
- \* If the well will remain temporarily abandoned, you must submit a new TA application, CP-111, before 01/30/2019.

You may contact me at the number above if you have questions.

Very truly yours,

Michael Maier"