

# GEOLOGIC REPORT

DANIEL T. JOHNSON  
CONSULTING GEOLOGIST  
19749 121<sup>ST</sup> RD, WINFIELD, KANSAS 67156  
620-229-3258

Scale: 5" / 100'  
Measured Depth Log

**Well Name** Benjamin Peffly #1

**Location** E/2 SW SW SW 28-T25S-R4E (330' FSL & 560 FWL)

**State** Kansas

**County** Butler

**Country** USA

**Rig Number** G&C Drilling, Inc. Rig #1

**API Number** 15-015-24090

**Field** Pierce

**Geographic Region** Mid- Continent

**Drilling Completed** 10/12/2017

**Spud Date** 10/9/2017

**Ground Elevation** 1341'

**K.B. Elevation** 1347'

**Logged Interval** 1800' To 2672'

**Total Depth** 2672' RTD

**Formation** Mississippian

**Type of Drilling Fluid** Chemical

## Accessories

### Fossils

♡ ECHINOID

### Minerals

△ CHTLT

## Other

### Sumble

### Textures

FX FINELYXLN

### Oil Show

● SPOTTED STAINING

### Engineering

● OIL SHOW

### Porosity

P PINPOINT

## Operator

**Company** IGWT, Inc. KCC License 3167

**Address** P.O. Box 550  
Rose Hill, Kansas 67133

## Geologist

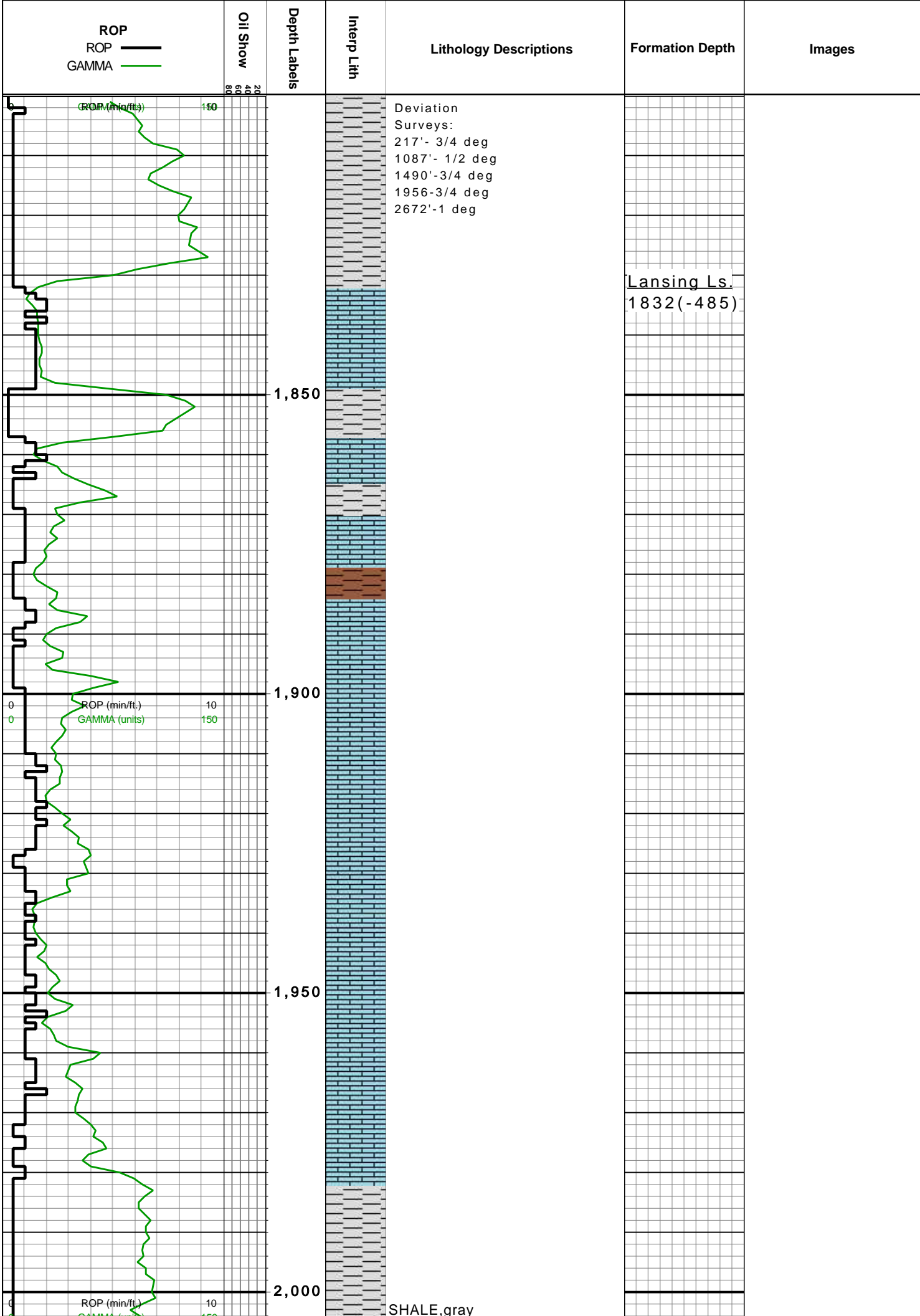
**Name** Daniel T. Johnson

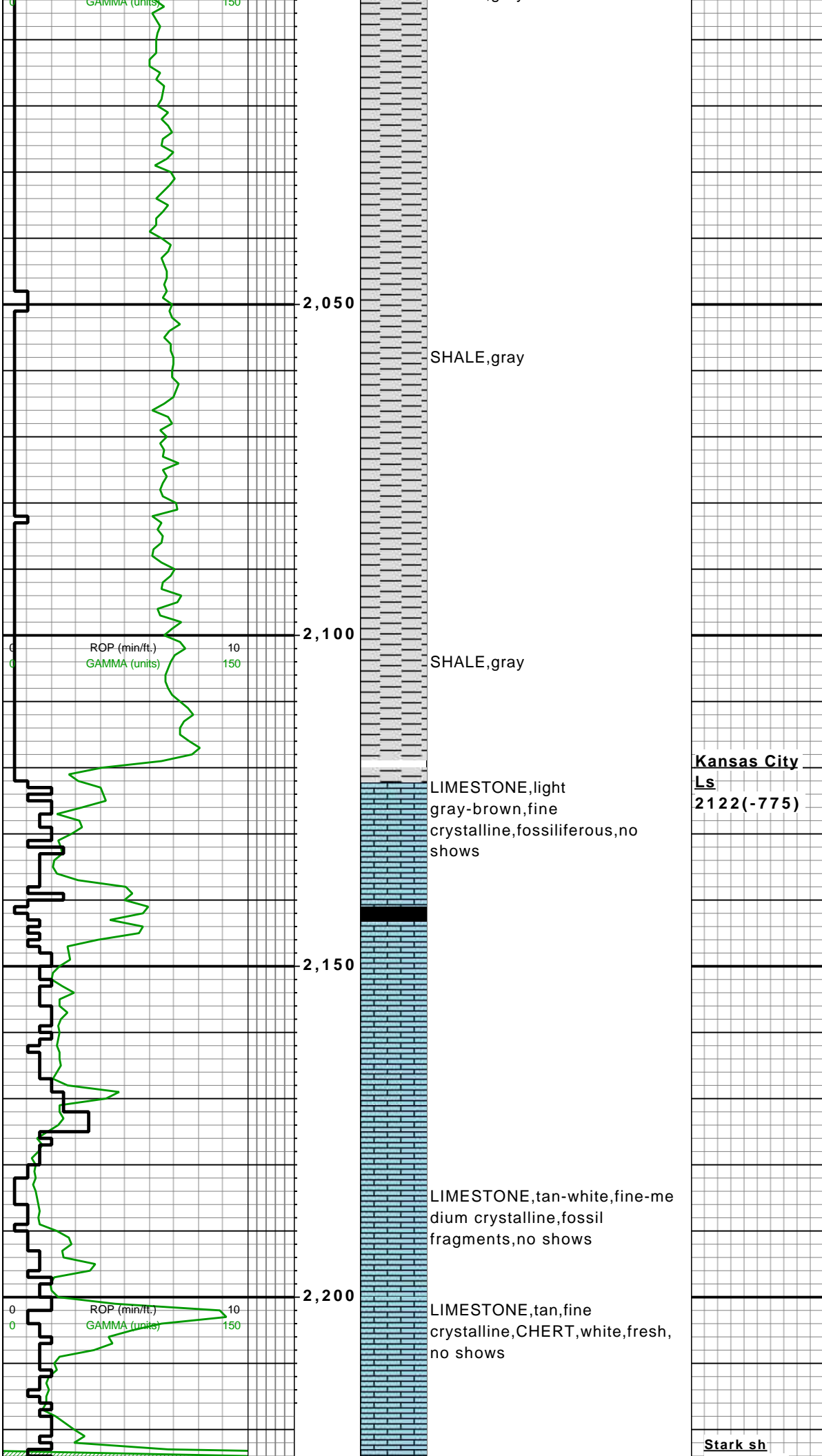
**Company** Consulting Geologist

**Address** 19749 121st Rd  
Winfield, Kansas 67156  
620-229-3258  
daniel.johnson3258@gmail.com

## Rock Types

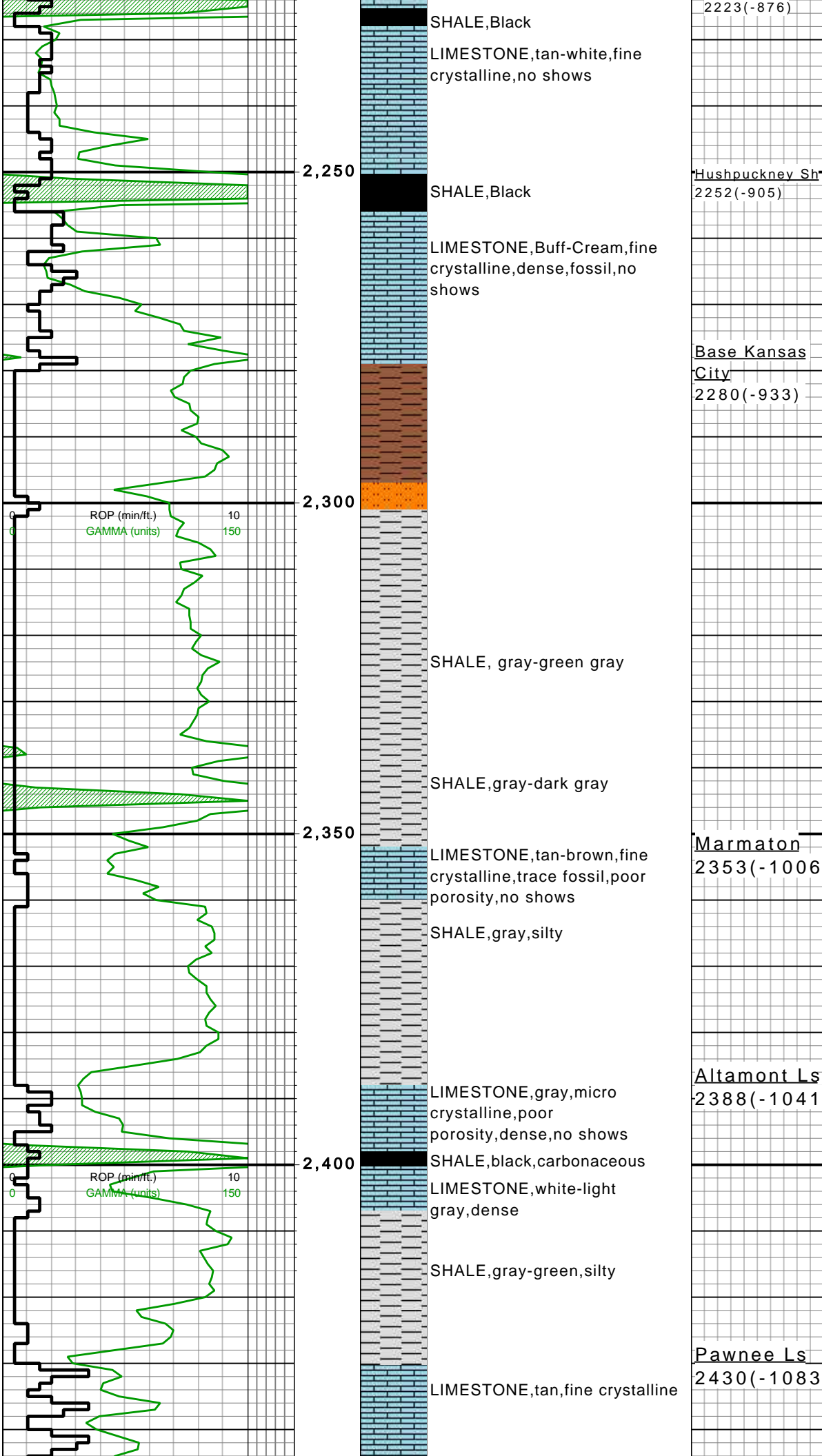
- LIMESTONE
- COAL
- SHALE COLORED
- CHERT
- SHALE GRAY
- SILTSTONE

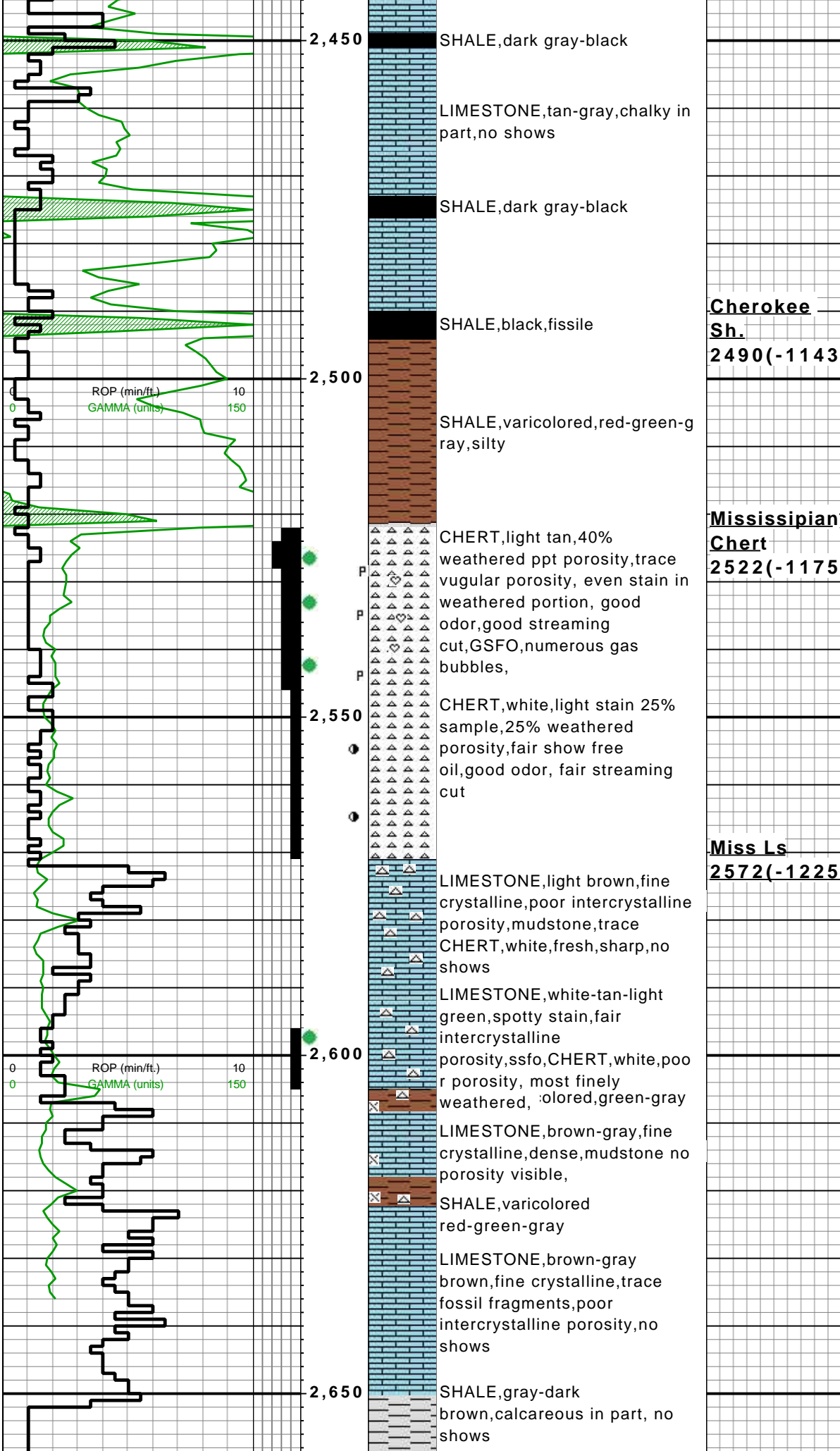




**Kansas City**  
**Ls**  
**2122(-775)**

**Stark sh**







LTD 2671(-1324)  
RTD 2672(-1325)

IGWT, Inc.  
Benjamin Peffly #1  
S/2 SW SW SW  
28-T25S-R4E  
Butler County, Kansas  
KB 1347

2,700

0 ROP (min/ft.) 10  
0 GAMMA (units) 150

2,750

ROP  
ROP   
GAMMA 

Oil Show  
20  
40  
60  
80

Depth Labels

Interp Lith

Lithology Descriptions

Formation Depth

Images