



AUSTIN B. KLAUS



Cell 785.650.3629
Work 785.483.3145
Ext 225

PO BOX 352
Russell, KS 67665
austin.klaus@johnofarmer.com

Scale 1:240 (5"=100') Imperial
Measured Depth Log

Well Name: Frisbie B #1
Location: Ellis County
License Number: API #15-051-26,889-0000
Spud Date: 9/11/17
Surface Coordinates: Section 19, Township 11 South, Range 18 West
Bottom Hole Coordinates: Vertical well w/ minimal deviation, same as above
Ground Elevation (ft): 1,986
Logged Interval (ft): 2,900 To: 3,640
Formation: LKC, Arbuckle
Type of Drilling Fluid: Chemical (Andy's)

Region: Kansas
Drilling Completed: 9/19/17
K.B. Elevation (ft): 1,994
Total Depth (ft): 3,640

Printed by STRIP.LOG from WellSight Systems 1-800-447-1534 www.WellSight.com

OPERATOR

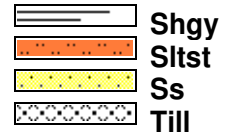
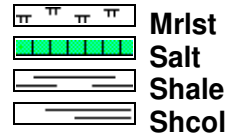
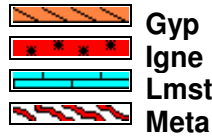
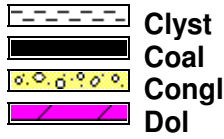
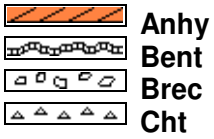
Company: John O. Farmer, Inc.
Address: 370 W. Wichita Ave.
Russell, KS 67665

Comments

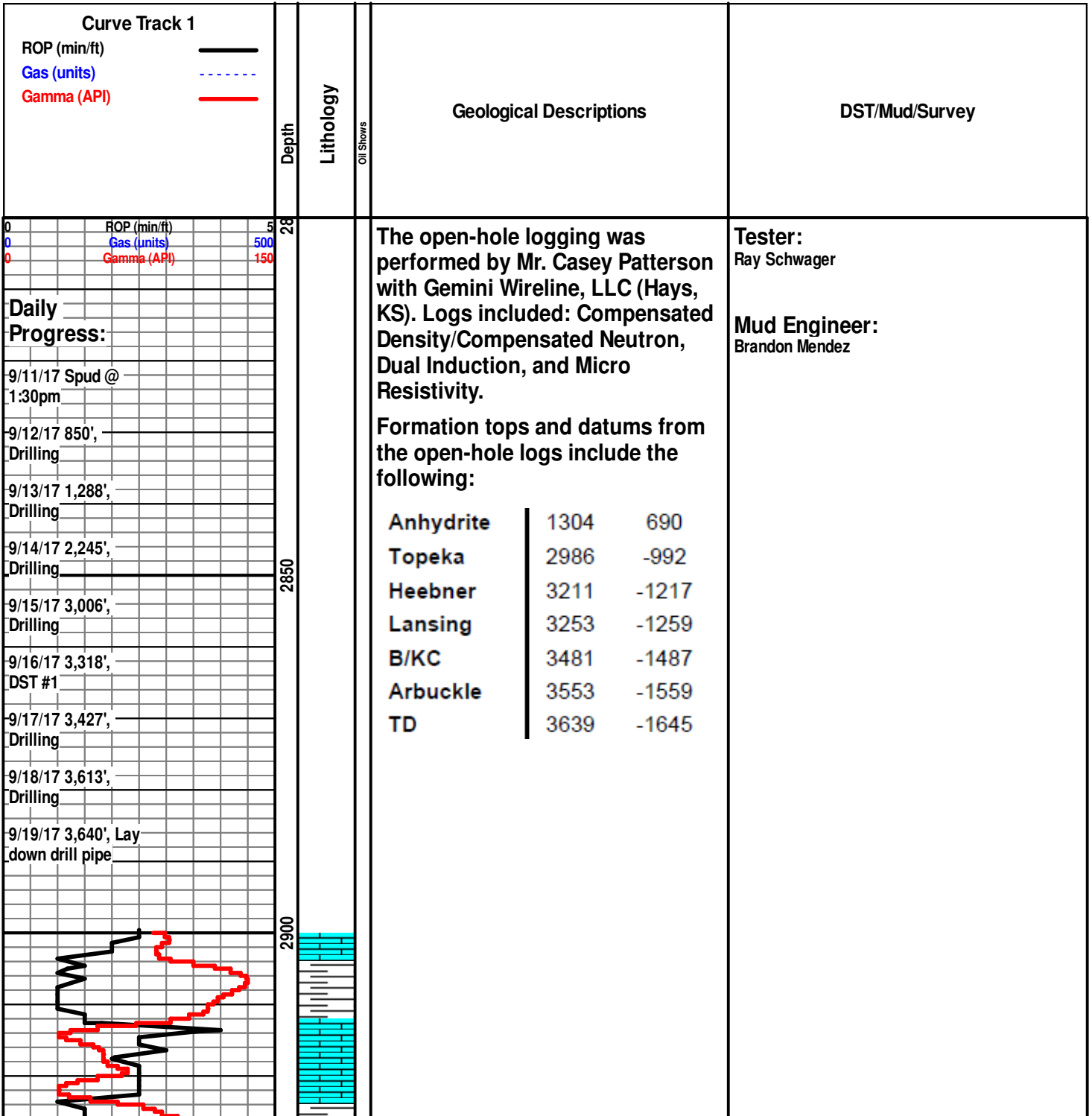
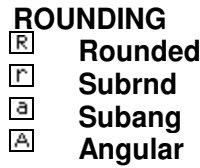
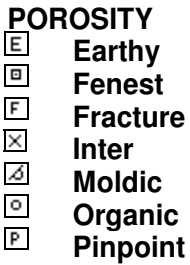
The Frisbie B #1 well was drilled by Discovery Drilling, Rig #2 (Tool Pusher: Terry Wickham).

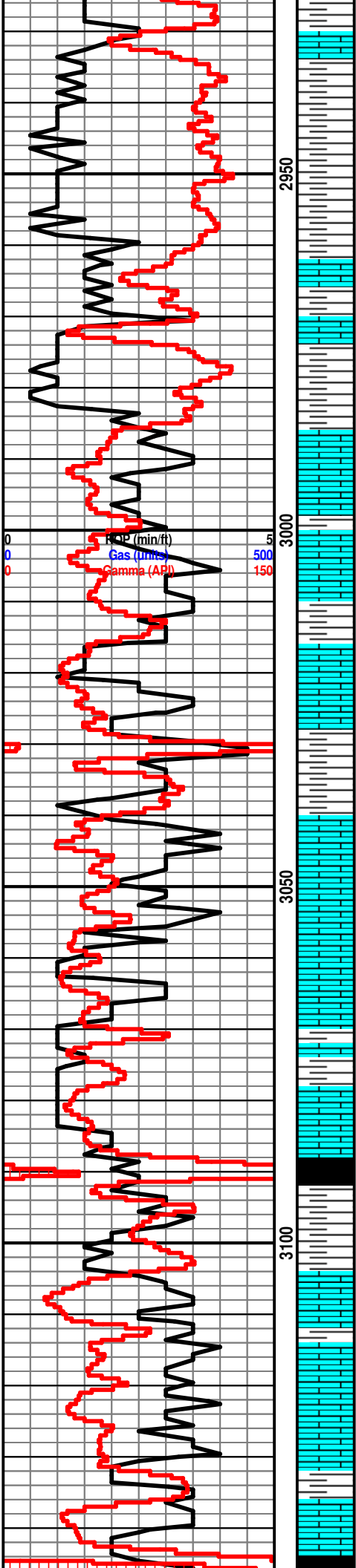
The location for the Frisbie B #1 well was found via 3-D seismic survey. Geologic samples were collected and evaluated from 2,900' - 3,640'. Three bottom-hole drill stem tests were conducted in the Lansing, one of which yielded positive results. Structurally, the Frisbie B #1 ran 2' high at the Lansing and 15' high at the Arbuckle, to the Frisbie #1-19. Upon completion of the logging operation, a straddle test was conducted over the top 15' of the Arbuckle, which resulted in muddy water. Upon completion of the drill stem test, 5 1/2" production casing was cemented to further evaluate the Frisbie B #1 well on 9/19/17.

ROCK TYPES



OTHER SYMBOLS





Ls: tan-gry, fn xln, mostly DNS, scat foss

Ls: ala, scat sh: lt-drk gry

Topeka 2983' (-989)

Ls: tan-gry, fn xln, mostly DNS, scat foss

Ls: ala

Ls: tan-gry, fn xln, foss, poor-fair int xln & pp vuggy porosity, NSFO

Sh: lt gry-drk gry

Ls: tan-gry, fn xln, mostly DNS

Sh: lt gry

Ls: tan-gry, fn-sub xln, mostly DNS, scat foss

Ls: ala

Ls: off wh-tan, fn xln, foss, poor-fair int xln porosi, scat dead oil stn, NSFO, no odor

Sh: lt gry-drk gry

Sh: drk gry-blk

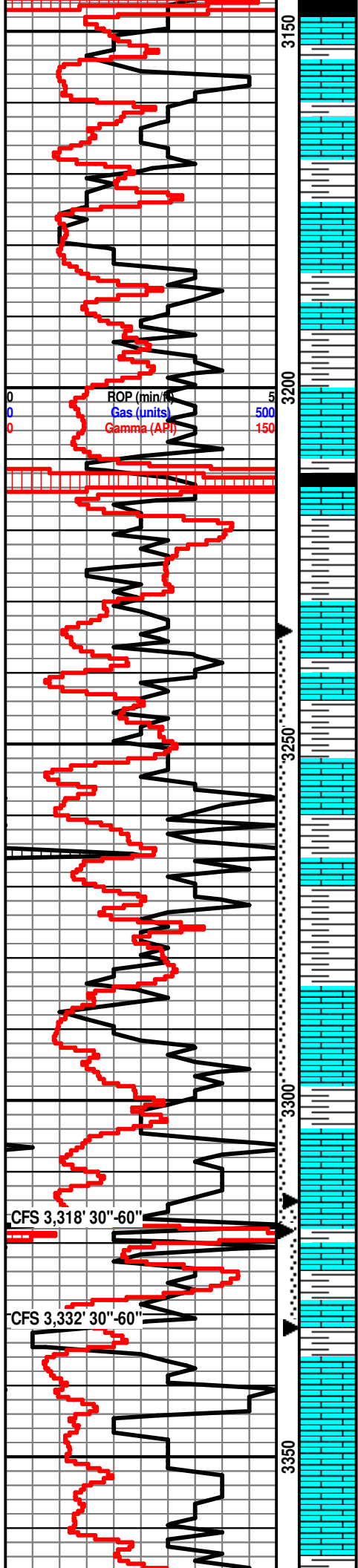
Sh: lt gry-brn

Ls: tan-gry, fn xln, scat foss, mostly DNS

Ls: tan-gry, fn-sub xln, mostly DNS, scat foss, scat chert

Sh: lt gry-brn

Sh: lt drk gry-blk



Sn: lt-drk gry-blk
Ls: off wh-tan, fn xln, poor-fair int xln & scat pp vuggy porosity, NSFO, no odor
Ls: tan-lt gry, fn xln, scat foss, NSFO
Sh: lt gry-brn
Ls: tan-gry, fn xln, fair int xln & vuggy porosity, scat dead oil stn, NSFO
Ls: ala
Sh: lt gry-drk gry

Heebner 3209' (-1215)

Sh: blk, carb fissile
Sh: lt-drk gry-brn

Toronto 3231' (-1237)

Ls: off wh-tan, fn xln, scat foss, poor int xln porosity, scat oil stn, NSFO, no odor
Sh: lt gry

Lansing 3251' (-1257)

Ls: off wh-tan, fn xln, few pcs w/ poor-fair int xln & scat pp vuggy porosity, fair oil sat, VSSFO, sl odor
Sh: lt gry-brn
Ls: off wh-tan, fn xln, mostly DNS, NSFO

Sh: lt gry

Ls: off wh-tan, fn xln, ool, fair ool porosity, scat vuggy porosity, fair-good oil sat, SSFO, sl odor, fair yel fluor

Sh: lt gry-brn

Ls: off wh-tan, fn xln, scat foss, poor int xln & vuggy porosity, fair oil stn, VSSFO, sl odor

Sh: drk gry-blk

Ls: off wh-tan, fn xln, foss, poor-fair int xln & int foss porosity, fair oil stn, VSSFO, sl odor

Ls: off wh-tan, fn xln, highly frac, good int frac porosity, scat oil stn, VSSFO, no odor

Ls: off wh-tan, fn xln, poor int xln porosity, NSFO, no odor

Ls: off wh-tan, fn-sub xln, mostly DNS, scat chert-off wh

CFS 3,318' 30"-60"

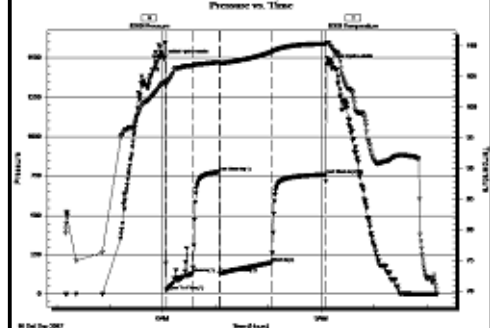
CFS 3,332' 30"-60"

DST #1 3,234'-3,318' (Lansing A-D)

30" - 30" - 60" - 60"
IF: BOB in 25 minutes, no blow back on shut in
FF: BOB in 25 minutes, 1/4" blow back on shut in
Rec: 330' Gas in pipe
165' MGO (10% M, 15% G, 75% O)
124' G&WCMO (10% G, 10% W, 40% M, 40% O)
62' O&GCMW (10% O, 15% G, 35% M, 40% W)

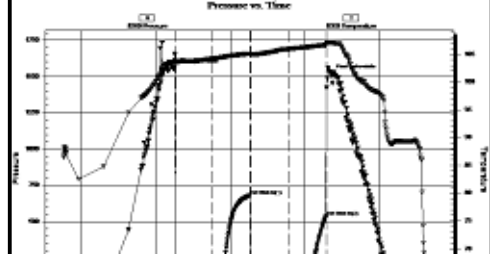
351' Total Fluid Recovery

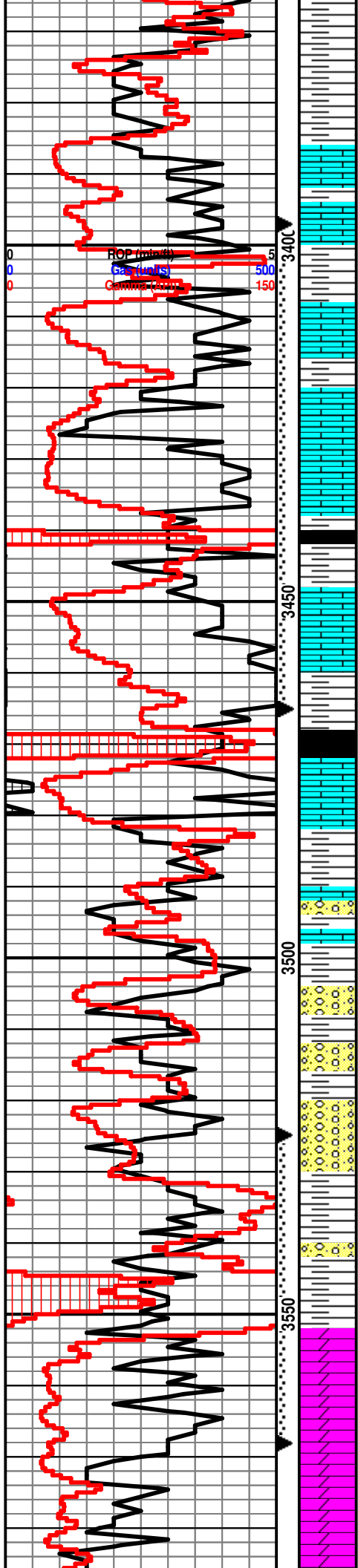
FP: 23-132, 133-200#
SIP: 776-760#
HP: 1,494- 1,463#
BHT: 110°



DST #2 3,314'-3,332' (Lansing E-F)

30" - 30" - 30" - 30"
IF: weak surface blow built to 1/8"
FF: no blow
Rec: 10' OCM (10% O, 90% M)
FP: 17-35, 22-21#
SIP: 679-535#
HP: 1,551- 1,514#
BHT: 107°





Sh: drk gry-blk

Sh: lt gry-drk gry

Ls: off wh-tan, fn xln, scat foss, fair int xln & scat int foss porosity, scat oil stn, VSSFO, sl odor

Sh: lt gry-drk gry

Ls: off wh-tan, fn xln, poor int xln & scat pp vuggy porosity, fair oil stn, VSSFO, sl odor

Sh: drk gry

Ls: off wh-tan, fn xln, ool, fair-good ool porosity, good oil sat, SSFO, fair odor, fair yel fluor

Sh: drk gry-blk

Ls: off wh-tan, fn xln, poor-fair int xln porosity, scat dead oil stn, NSFO, no odor

Sh: lt-drk gry

Ls: off wht-crm, fn xln, dense in pt, chalky in pt, spotty stain, some odor, SSFO

B/KC 3,477' (-1,483)

Sh: gry-drk gry, scat maroon

Sh: ala

Cong: lt gry, sub ang-sub round, fn-crs grn, dirty red mtrx, dense, NFSO, no odor & dark brn-maroon sh.

Cong: ala

Cht: drk yellow-tan, some dk red-maroon in pt. very dense

Sh: gry-drk gry, teal, brown-maroon, some cong and cht present as above, NSFO, No odor

Sh: ala

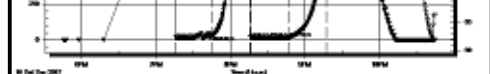
Simpson Sd. 3,558' (-1,564)

Sd: qtz sd, fn-med grain, sub ang-sub round, VSSFO, sl odor

Arbuckle 3,564' (-1,570)

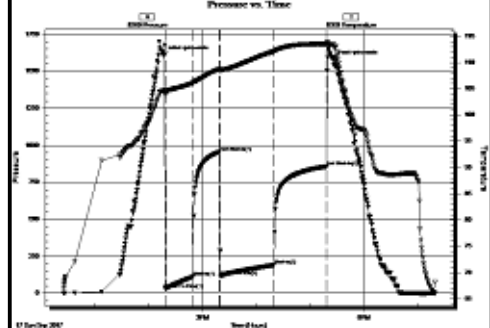
Dolo: buff-tan, med xln. fair-good visible xln por, dark stain, thick tar sticky oil, SSFO, sl odor

Dolo: gry, med xln, fair xln por, fair odor, dark thick tar like oil stain, VSSFO when crushed



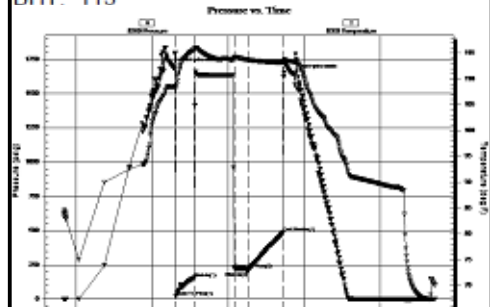
DST #3 3,397'-3,465' (Lansing I-K)

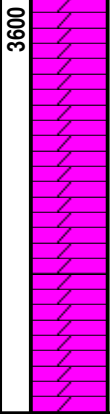
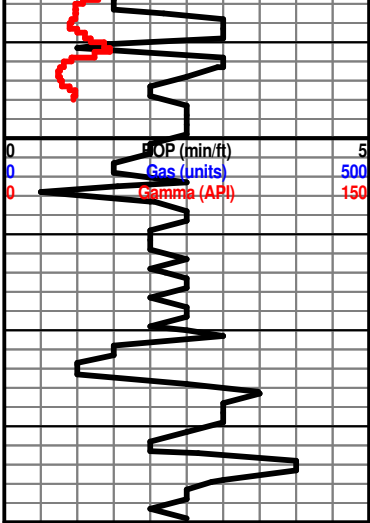
30" - 30" - 60" - 60"
 IF: weak blow built to 8", no blow back on shut in
 FF: weak blow built to 6", no blow back on shut in
Rec: 372' Water
 FP: 26-110, 114-190#
 SIP: 954-856#
 HP: 1,605- 1,577#
 BHT: 110°



DST #4 3,525'-3,568' (Top 15' of Arbuckle)

15" - 30" - 10" - 30"
 IF: BOB in 6 minutes, no blow back on shut in
 FF: BOB immediately, no blow back on shut in
Rec: 435' MW (40% M, 60% W) Chl. 24K
 FP: 21-155, 221-200#
 SIP: 486#
 HP: 1,688- 1,642#
 BHT: 113°





Dolo: off wh-tan, fn-md xln, poor-fair int xln porosity, fair oil sat, VSSFO, fair odor, fair yel fluor

Dolo: off wh-tan, fn-md xln, fair-good int xln porosity, fair ool sat, NSFO, sl odor

Dolo: off wh-tan, md xln, good int xln & scat vuggy porosity, NSFO, no odor

Dolo: ala

