



MIDWEST SURVEYS
 LOGGING - PERFORATING - CONSULTING SERVICES
 P.O. Box 69, Osawatomie, KS 68064
 913.755-2128

GAMMA RAY / NEUTRON / CCL

File No:

Company: **Mark Morrison**
 Well: **Kimberlin North No. P-3**
 Field: **Rose East**
 County: **Woodson** State: **Kansas**

Location: **3810 FSL & 2440 FEL**
NW/4NW/36W/1E

Sec: **21** Twp: **26S** Rge: **16E**
 Permian Datum: **GL** Elevation: **995'**
 Log Measured From: **GL** K.B. NA
 Drilling Measured From: **GL** D.F. NA
GL 995'

Date: **08-24-2017**
 Run Number: **One**
 Depth Diller: **1138.0**
 Depth Logger: **1135.4**
 Bottom Logged Interval: **1124.4**
 Top Log Interval: **20.0**
 Fluid Level: **Fall**

Run	BIT	FROM	TO	SIZE	WGT.	FROM	TO
One	12.25"	0.0	42.0	8.625"	24.0#	0.0	42.0
Two	6.75"	42.0	1138.0	4.50"	10.5#	0.0	1138.8

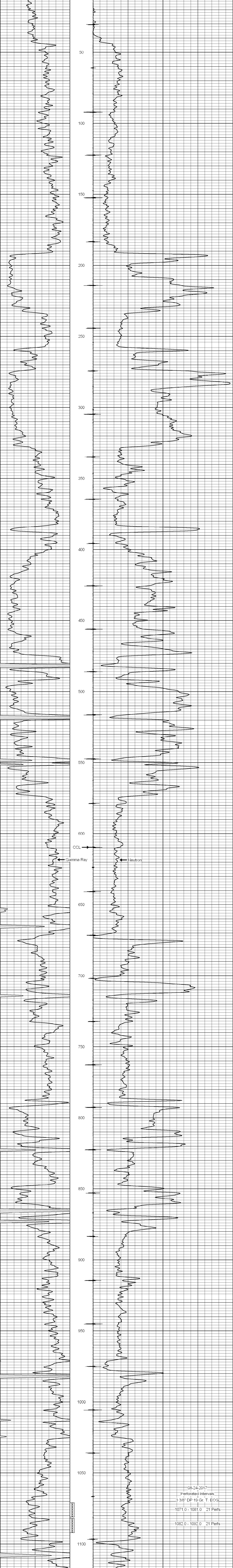
<<< Fold Here >>>

All interpretations are opinions based on inferences from electrical or other measurements and we cannot and do not guarantee the accuracy or correctness of any interpretation, and we shall not, except in the case of gross or willful negligence on our part, be liable or responsible for any loss, costs, damages, or expenses incurred or sustained by anyone resulting from any interpretation made by any of our officers, agents or employees. These interpretations are also subject to our general terms and conditions set out in our current Price Schedule.

Comments

Drilling Contractor :
EK Energy, LLC

Database File: kimberlin north p-3.db
 Dataset Pathname: pass1
 Presentation Format: gr-n-ccl
 Dataset Creation: Thu Aug 24 10:00:02 2017 by Log SCH 111116
 Charted by: Depth in Feet scaled 1:240



0 Gamma Ray (cps) 150
 150 Gamma Ray (cps) 300
 -1 CCL 1
 10 Neutron (cps) 2100