

# TRILOBITE TESTING, INC.

## DRILL STEM TEST REPORT

Vincent Oil Corporation  
 200 W Douglas Ave #725  
 Wichita, KS 67202  
 ATTN: Tom Dudgeon

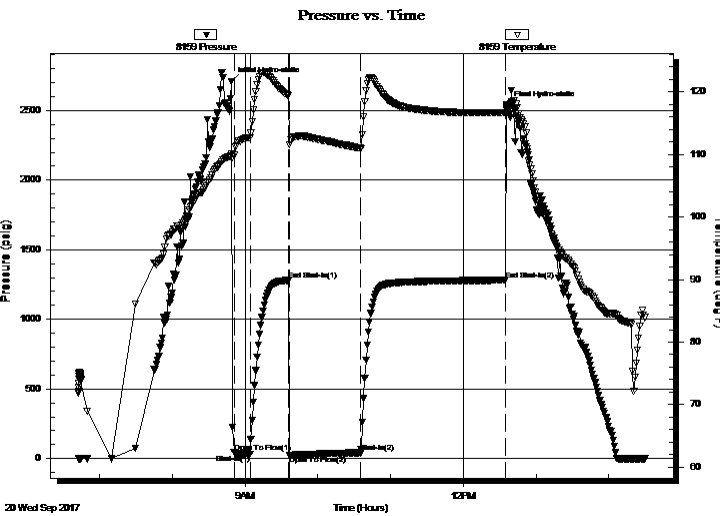
**34-28S-23W Ford**  
**Keough 7-34**  
 Job Ticket: 57829      **DST#: 2**  
 Test Start: 2017.09.20 @ 06:42:33

### GENERAL INFORMATION:

Formation: **Penn/Morrow**  
 Deviated: No Whipstock: ft (KB)  
 Time Tool Opened: 08:50:48  
 Time Test Ended: 14:30:03  
 Interval: **5172.00 ft (KB) To 5217.00 ft (KB) (TVD)**  
 Total Depth: 5217.00 ft (KB) (TVD)  
 Hole Diameter: 7.88 inches Hole Condition: Good  
 Test Type: Conventional Bottom Hole (Reset)  
 Tester: Leal Cason  
 Unit No: 74  
 Reference Elevations: 2547.00 ft (KB)  
 2535.00 ft (CF)  
 KB to GR/CF: 12.00 ft

**Serial #: 8159 Inside**  
 Press@RunDepth: 41.89 psig @ 5173.00 ft (KB) Capacity: 8000.00 psig  
 Start Date: 2017.09.20 End Date: 2017.09.20 Last Calib.: 2017.09.20  
 Start Time: 06:42:34 End Time: 14:30:03 Time On Btm: 2017.09.20 @ 08:48:48  
 Time Off Btm: 2017.09.20 @ 12:36:03

**TEST COMMENT:** IF: Strong Blow , BOB in 1 minute  
 IS: No Blow Back  
 FF: Strong Blow , BOB immediate, GTS in 30 seconds, Gauged & Caught Sample  
 FS: No Blow Back



### PRESSURE SUMMARY

Time (Min.)	Pressure (psig)	Temp (deg F)	Annotation
0	2708.52	110.06	Initial Hydro-static
2	45.50	109.90	Open To Flow (1)
16	32.97	112.68	Shut-In(1)
47	1280.02	119.42	End Shut-In(1)
48	21.32	111.54	Open To Flow (2)
107	41.89	110.98	Shut-In(2)
227	1281.26	116.67	End Shut-In(2)
228	2537.73	117.55	Final Hydro-static

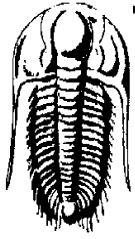
### Recovery

Length (ft)	Description	Volume (bbl)
0.00	GTS	0.00
20.00	SGCM 2%G 98%M	0.28

### Gas Rates

	Choke (inches)	Pressure (psig)	Gas Rate (Mcf/d)
First Gas Rate	0.25	10.00	38.71
Last Gas Rate	0.25	25.00	62.50
Max. Gas Rate	0.25	25.00	62.50

\* Recovery from multiple tests



**TRILOBITE TESTING, INC.**

# DRILL STEM TEST REPORT

Vincent Oil Corporation  
 200 W Douglas Ave #725  
 Wichita, KS 67202  
 ATTN: Tom Dudgeon

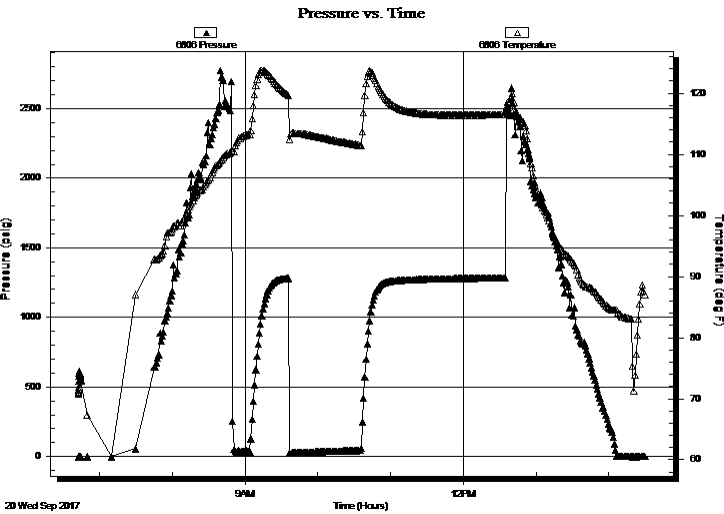
**34-28S-23W Ford**  
**Keough 7-34**  
 Job Ticket: 57829 **DST#: 2**  
 Test Start: 2017.09.20 @ 06:42:33

**GENERAL INFORMATION:**

Formation: **Penn/Morrow**  
 Deviated: No Whipstock: ft (KB)  
 Time Tool Opened: 08:50:48  
 Time Test Ended: 14:30:03  
**Interval: 5172.00 ft (KB) To 5217.00 ft (KB) (TVD)**  
 Total Depth: 5217.00 ft (KB) (TVD)  
 Hole Diameter: 7.88 inches Hole Condition: Good  
 Test Type: Conventional Bottom Hole (Reset)  
 Tester: Leal Cason  
 Unit No: 74  
 Reference Elevations: 2547.00 ft (KB)  
 2535.00 ft (CF)  
 KB to GR/CF: 12.00 ft

**Serial #: 6806 Outside**  
 Press@RunDepth: psig @ 5173.00 ft (KB) Capacity: 8000.00 psig  
 Start Date: 2017.09.20 End Date: 2017.09.20 Last Calib.: 2017.09.20  
 Start Time: 06:42:34 End Time: 14:30:03 Time On Btm:  
 Time Off Btm:

**TEST COMMENT:** IF: Strong Blow , BOB in 1 minute  
 IS: No Blow Back  
 FF: Strong Blow , BOB immediate, GTS in 30 seconds, Gauged & Caught Sample  
 FS: No Blow Back



**PRESSURE SUMMARY**

Time (Min.)	Pressure (psig)	Temp (deg F)	Annotation

**Recovery**

Length (ft)	Description	Volume (bbl)
0.00	GTS	0.00
20.00	SGCM 2%G 98%M	0.28

\* Recovery from multiple tests

**Gas Rates**

	Choke (inches)	Pressure (psig)	Gas Rate (Mcf/d)
First Gas Rate	0.25	10.00	38.71
Last Gas Rate	0.25	25.00	62.50
Max. Gas Rate	0.25	25.00	62.50



**TRILOBITE  
TESTING, INC.**

# DRILL STEM TEST REPORT

**FLUID SUMMARY**

Vincent Oil Corporation

**34-28S-23W Ford**

200 W Douglas Ave #725  
Wichita, KS 67202

**Keough 7-34**

Job Ticket: 57829

**DST#: 2**

ATTN: Tom Dudgeon

Test Start: 2017.09.20 @ 06:42:33

## Mud and Cushion Information

Mud Type: Gel Chem

Cushion Type:

Oil API:

deg API

Mud Weight: 10.00 lb/gal

Cushion Length:

ft

Water Salinity:

ppm

Viscosity: 56.00 sec/qt

Cushion Volume:

bbbl

Water Loss: 11.58 in<sup>3</sup>

Gas Cushion Type:

Resistivity: ohm.m

Gas Cushion Pressure:

psig

Salinity: 7700.00 ppm

Filter Cake: 0.02 inches

## Recovery Information

Recovery Table

Length ft	Description	Volume bbl
0.00	GTS	0.000
20.00	SGCM 2%G 98%M	0.281

Total Length: 20.00 ft      Total Volume: 0.281 bbl

Num Fluid Samples: 0

Num Gas Bombs: 0

Serial #:

Laboratory Name:

Laboratory Location:

Recovery Comments:



**TRILOBITE  
TESTING, INC.**

## DRILL STEM TEST REPORT

**GAS RATES**

Vincent Oil Corporation  
200 W Douglas Ave #725  
Wichita, KS 67202  
ATTN: Tom Dudgeon

**34-28S-23W Ford**  
**Keough 7-34**  
Job Ticket: 57829      **DST#: 2**  
Test Start: 2017.09.20 @ 06:42:33

### Gas Rates Information

Temperature: 59 (deg F)  
Relative Density: 0.65  
Z Factor: 0.8

Gas Rates Table

Flow Period	Elapsed Time	Choke (inches)	Pressure (psig)	Gas Rate (Mcf/d)
2	10	0.25	10.00	38.71
2	10	0.25	10.00	38.71
2	20	0.25	17.00	49.81
2	30	0.25	20.00	54.57
2	40	0.25	23.00	59.33
2	50	0.25	25.00	62.50

Serial #: 8159

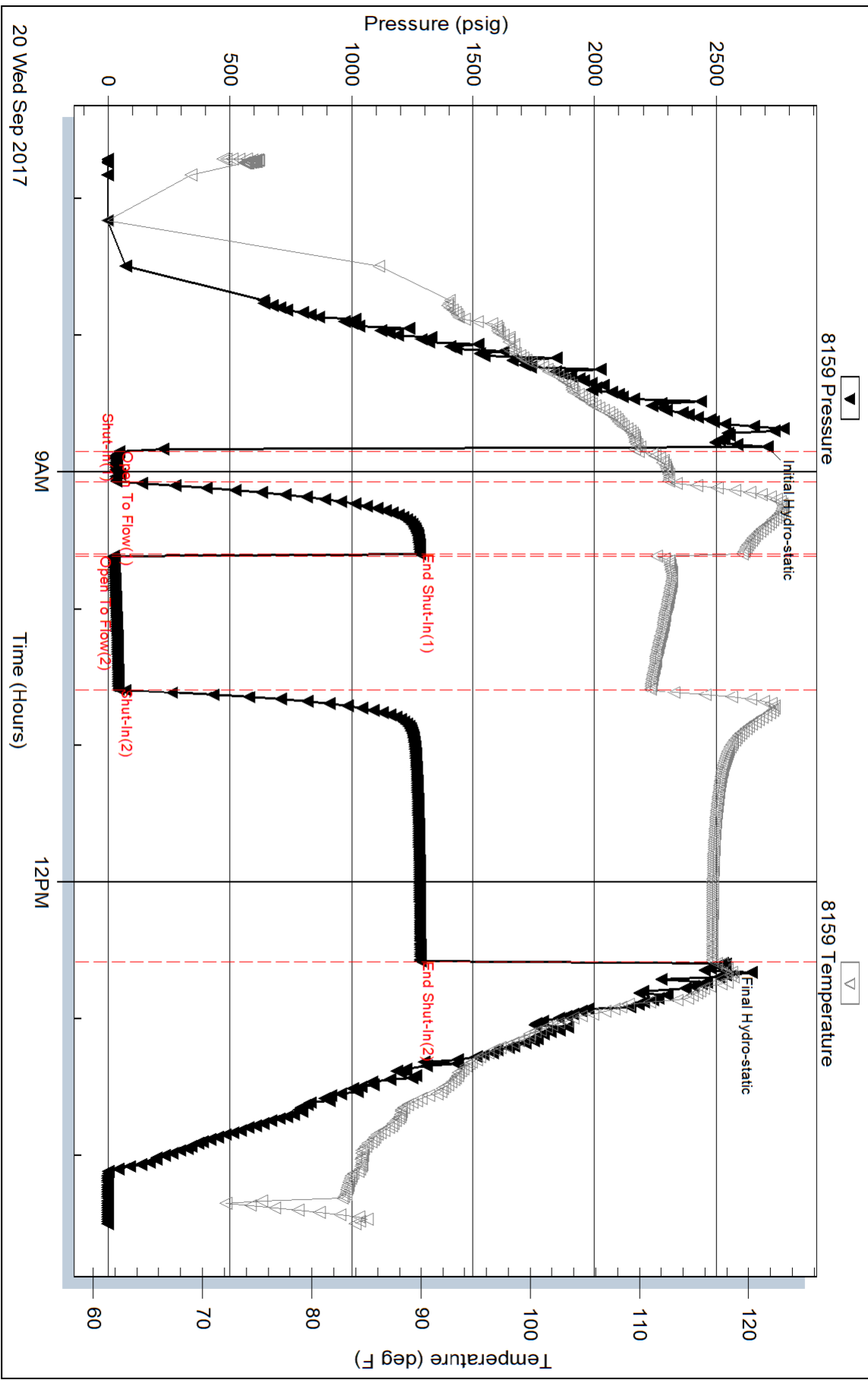
Inside

Vincent Oil Corporation

Keough 7-34

DST Test Number: 2

# Pressure vs. Time



Triobite Testing, Inc

Ref. No: 57829

Printed: 2017.09.20 @ 14:41:45

Serial #: 6806

Outside Vincent Oil Corporation

Keough 7-34

DST Test Number: 2

