



Scale 1:240 Imperial

Well Name: Keough 7-34
 Surface Location: NE NE NE SW 34-28s-23w
 Bottom Location:
 API: 15-057-20985-00-00
 License Number: 5004
 Spud Date: 9/11/2017 Time: 8:00 PM
 Region:
 Drilling Completed: 9/23/2017 Time: 2:09 PM
 Surface Coordinates: 2585 FSL & 2409 FWL
 Bottom Hole Coordinates:
 Ground Elevation: 2535.00ft
 K.B. Elevation: 2547.00ft
 Logged Interval: 4250.00ft To: 5370.00ft
 Total Depth: 5370.00ft
 Formation: Mississippian
 Drilling Fluid Type:

OPERATOR

Company: Vincent Oil Corporation
 Address: 200 W Douglas Ave
 Ste 725
 Wichita, KS 67202
 Contact Geologist: Dick Jordan
 Contact Phone Nbr: 316.262.3573
 Well Name: Keough 7-34
 Location: NE NE NE SW 34-28s-23w API: 15-057-20985-00-00
 Pool: Developement-Pool Extension Field: Mulberry Creek
 State: Kansas Country: USA

CONTRACTOR

Contractor: Duke Drilling Co., Inc.
 Rig #: 1
 Rig Type: Rotary
 Spud Date: 9/11/2017 Time: 8:00 PM
 TD Date: 9/23/2017 Time: 2:09 PM
 Rig Release: 9/24/2017 Time: 5:00 PM

LOGGED BY

Company: Vincent Oil Corporation
 Address:
 Phone Nbr: 316.262.3573
 Logged By: Geologist Name: Tom Dudgeon

SURFACE CO-ORDINATES

Well Type: Vertical
 Longitude: 99.8225446
 Latitude: 37.5644042

Longitude: -99.8235448
 N/S Co-ord: 2585 FSL
 E/W Co-ord: 2409 FWL

Latitude: 37.5044043

ELEVATIONS

K.B. Elevation: 2547.00ft Ground Elevation: 2535.00ft
 K.B. to Ground: 12.00ft

TOTAL DEPTH

Measurement Type:	Measurement Depth:	TVD:
RTD	5370.00	5372.00
LTD	5372.00	5372.00

DRILLING FLUID SUMMARY

Type	Date	From Depth	To Depth
	9/23/2017	0.00ft	0.00ft

CASING SUMMARY

	Surface	Intermediate	Main		
Bit Size	12.25 in		12.25 in		
Hole Size	7.88 in		7.88 in		
	Size	Set At	Type	# of Joints	Drilled Out At
Surf Casing	8.625 in	689 ft	23#	16	9/12/2017 8:00 PM
Int Casing					
Prod Casing	4.5 in	5369 ft	11.6#	119	

CASING SEQUENCE

Type	Hole Size	Casing Size	At
Surface	12.25 in	8.63	689.00 ft
Production	7.88 in	4.50	5369.00 ft

OPEN HOLE LOGS

Logging Company: ELI Wireline
 Logging Engineer: Jeff Luebbers
 Truck #: 922339
 Logging Date: 9/23/2017 Time Spent: 6
 # Logs Run: 4 # Logs Run Successful: 4

LOGS RUN

Tool	Logged Interval	Logged Interval	Hours	Remarks	Run #
DI	0.00ft	5370.00ft	2.00		1
CNEU/DEN/PE	4250.00ft	5370.00ft	2.00		1
MICRO	4250.00ft	5370.00ft	4.00		2
SONIC	0.00ft	5370.00ft	4.00		2

LOGGING OPERATION SUMMARY

Date	From	To	Description Of Operation
9/23/2017	0.00ft	0.00ft	Logs Ran Successfully

NOTES

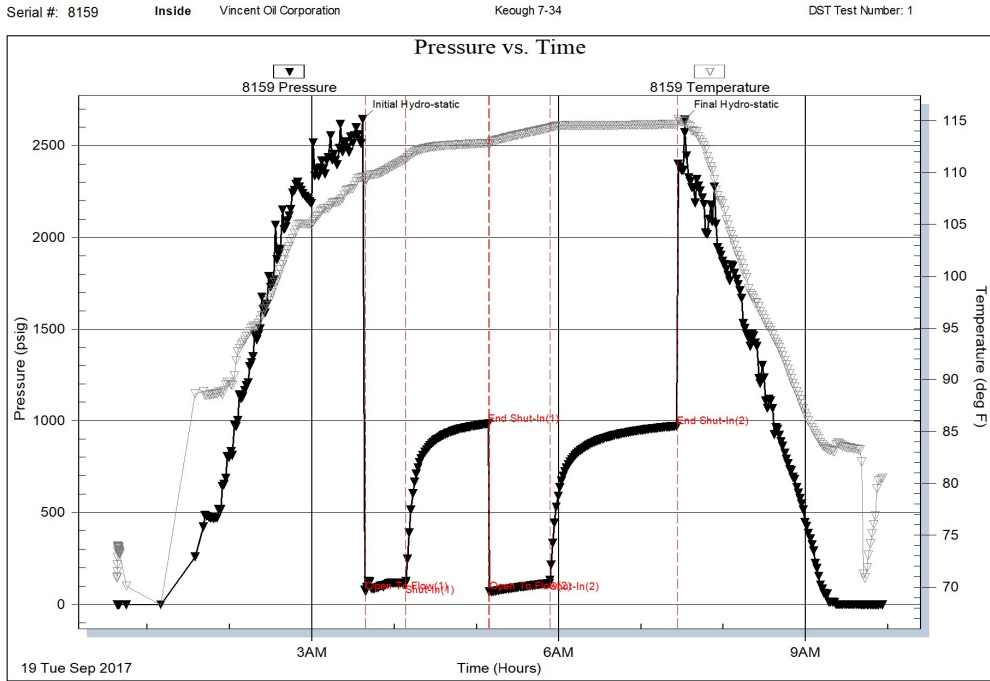
Mud pump clutch failure at 5338', down 4 hrs, replaced, circulated 1 hour to clean hole, drilled ahead.

TOP	Depth	Datum	Struct.
HBR	4360	-1813	-5
BL	4497	-1950	-5
LKC	4508	-1961	-6
MC	4699	-2152	-9
STARK	4843	-2296	-5
HUSH	4885	-2338	-5
BKC	4963	-2416	-8
MARM	4984	-2437	-9

PAW	5052	-2505	-7
LAB	5078	-2531	-8
CHER	5098	-2551	-5
B/PENN	5197	-2650	-4
MISS	5215	-2668	-5

Keying off the Keough 6-34, in the SW NW NE SW of the same section.

DST #1

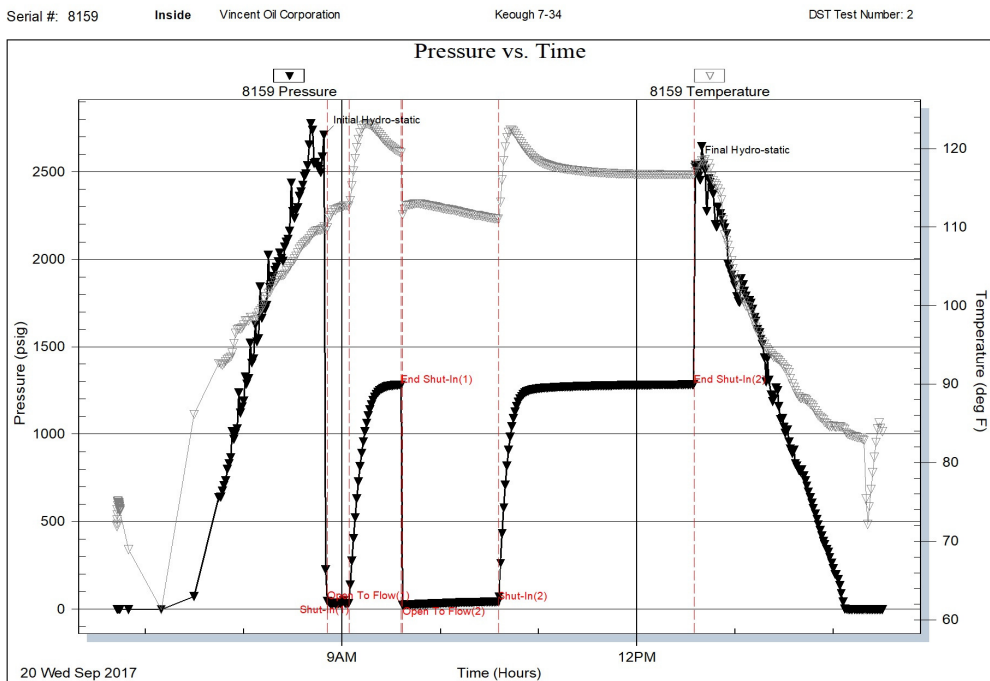


Trilobite Testing, Inc

Ref. No: 57828

Printed: 2017.09.19 @ 10:06:54

DST #2



Trilobite Testing, Inc

Ref. No: 57829

Printed: 2017.09.20 @ 14:41:45

DST #3

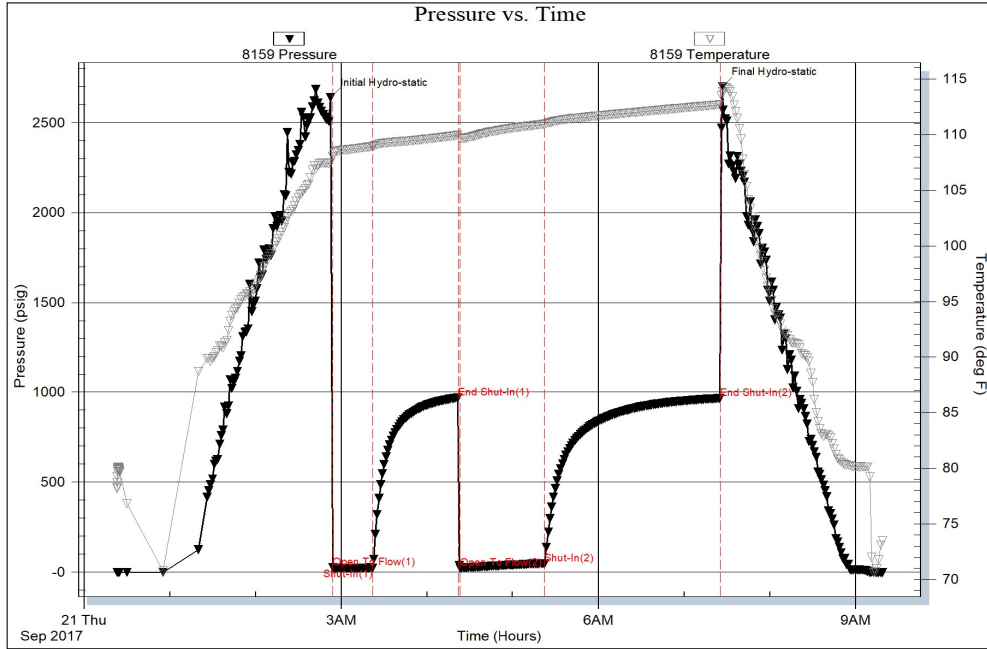
Serial #: 8159

Inside

Vincent Oil Corporation

Keough 7-34

DST Test Number: 3



Trilobite Testing, Inc

Ref. No: 57830

Printed: 2017.09.21 @ 09:29:01

DST #4

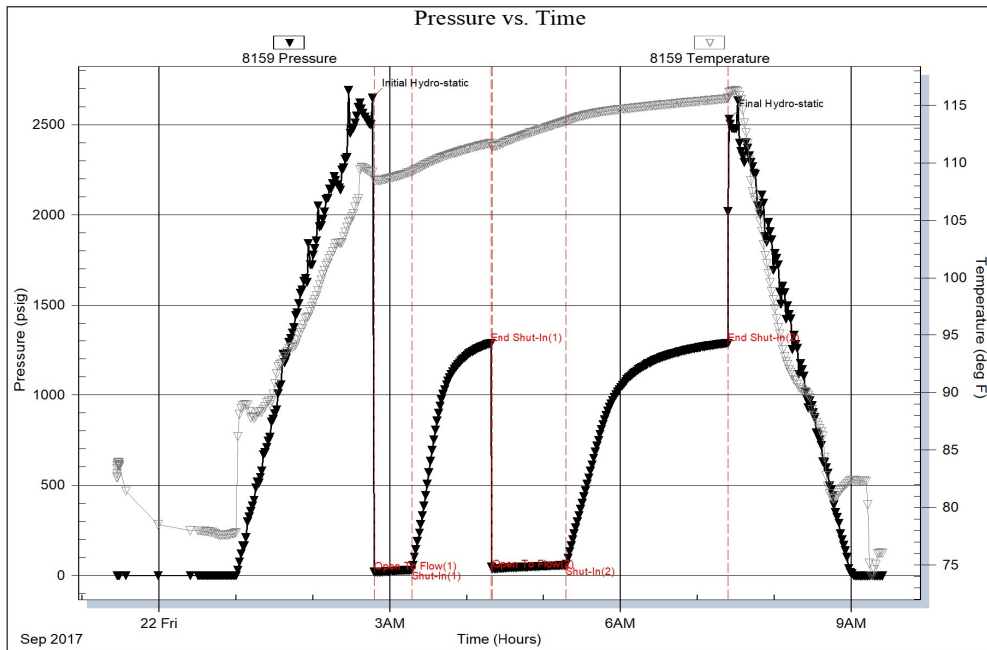
Serial #: 8159

Inside

Vincent Oil Corporation

Keough 7-34

DST Test Number: 4

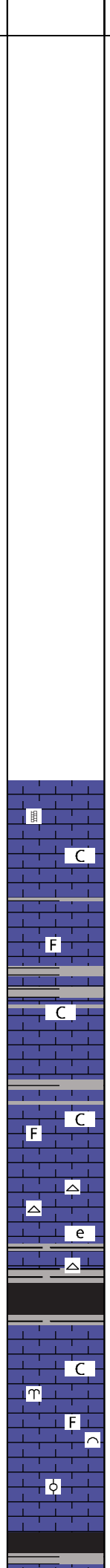
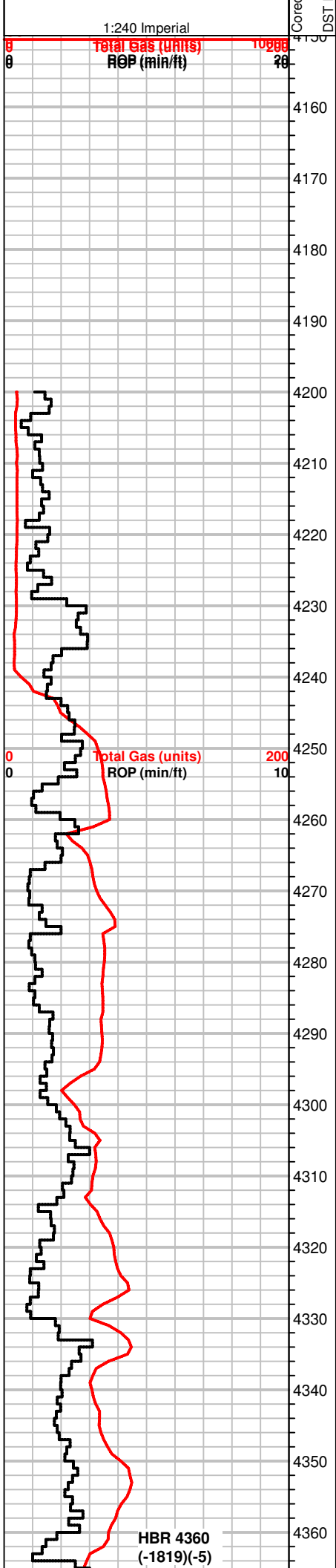


Trilobite Testing, Inc

Ref. No: 57831

Printed: 2017.09.22 @ 09:53:32

DST #5



GEO ON LOCATION @ 3:00 PM 9/16/2017

WS-PS, crm to tan, f-xln, sugary/gritty txt in pard, fossils, firm, some pcs chalky, calcite veins, NS

WS-PS, crm to tan, f-xln, MS, crm to brn, f-xln, chalky to shaly, pcs fossilif., SH, gray, green

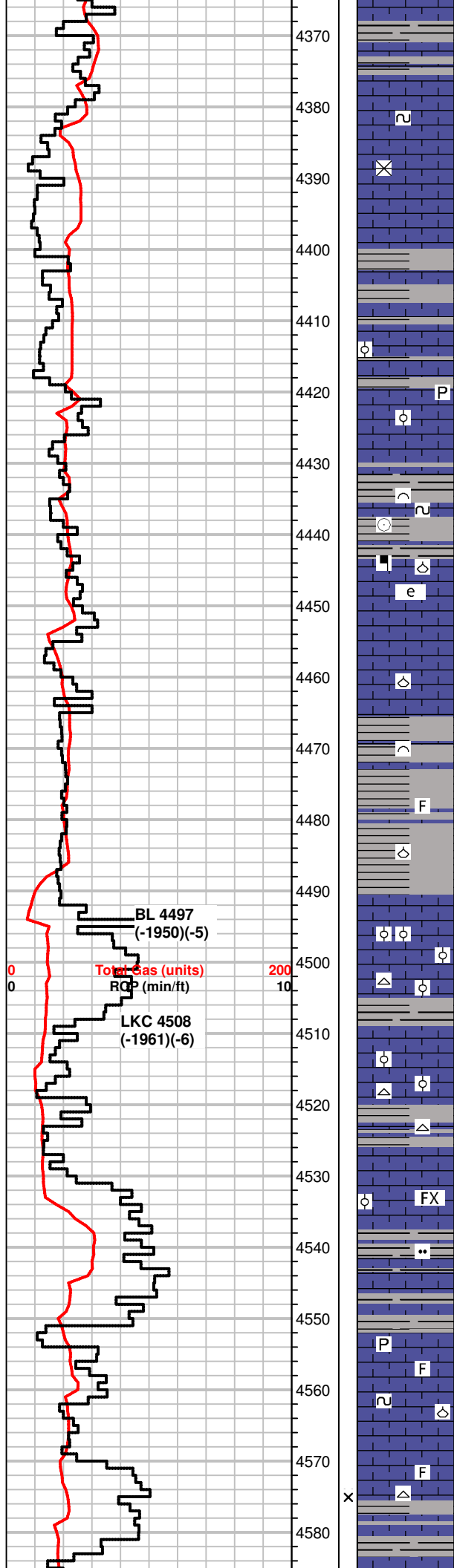
MS-WS, crm to scatt dk. gray, f to m-xln, chalky, some pcs dense, scatt fossils, SH, rare dk. gray, grays

MS-WS, crm to tan, f-xln, firm, gritty to earthy txt, rare fossils, Chert, wht, fossils rare, NS
SH, grays

SH's, dk. gray to gray, silty, carbonaceous in part, rare blk pcs
MS-WS, crm to gry, f-xln, fossils, fulsilinids(whole and frgmts), sli. chalky in part, NS

SH, dk gray, blk, rare gas bubbles

Gas detection equipment: Bloodhound Unit 5258 provided by Bluestem Labs



MS-WS, crm to tan, f-xln, some m-xln, gritty txt, glauc, fossils, soft chalky to dense pcs, rare Chert, white, NS

MS-WS, gray to crm, f-xln to mic-xln, dense, glauc specs, most pcs firm, friable, NS

MS, crm to off white, f-xln, earthy to chalky, some pcs shaly, dense to friable/soft, scatt mineral specs, some pcs gray SH scatt

WS-PS, off white to crm, m-xln, m-gr oolitic txt, firm to hard, fossils, rare SH, green, pyrite

SH, blk, gray, striated, sli carb pcs
MS-WS, crm to gray, f-xln, firm/friable to dense, tite fossilif pcs (brachs, crinoids), glauc/mineral specs, NS, dull fluor

MS, crm to tan, f-xln, earthy, gritty txt in some pcs, hard, scatt fossils, Chert frgmts, wht scatt SH, gray

MS-WS, gray to crm, f-xln, chalky matrix, dark m-gr rinded ooids, soft to firm, fossils,

SH, gray, green

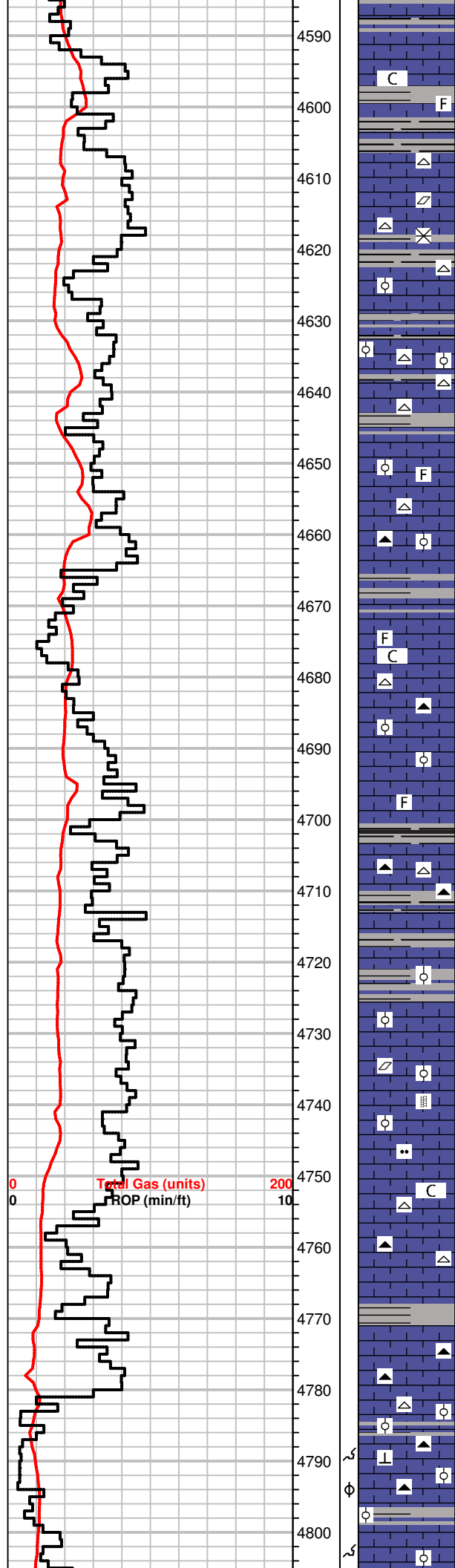
MS-WS, gray to crm, firm to hard, m to f-gr oolitic pcs, some w/ dark concentric rings, fossils
SH, gray, green, scatt dk. gray

MS-WS, crm to tan, f-xln to earthy/massive txt, dense, scatt candy pcs, rare fossils, Chert, wht
Scatt SH, gray

influx, MS, crm, f-xln, dense, chert/fossil frgmts, scatt oolitic pcs, f-gr ooids in dense calcite matrix, NS
scatt SH gray, silty in part

SH, grays, pyrite, silty
MS, crm to tan, vf-xln, dense, pyrite/gluac specs, scatt fossils, NS

MS-WS, crm to off white, f to m-xln, gritty txt, dense, hard, fossils (fusilinids), some mic-xln, massive brn pcs, rare Chert, wht, scatt SH, gray, green



SH, sea green, gray
 MS, crm to lt. gray, f-xln, gritty/sugary txt, dense to chalky pcs, fossils, Chert frgmts, wht, rare co. qtz gr's. angular

MS, crm, f-xln, chalky, A.A., influx MS, gray, mic to f-xln, firm to dense, mineral inclusions, silty in part, calcite, Chert, wht. rare SH, blk

SH, blk, gray, red
 MS-WS, crm to gray, f-xln, girty/earthy txt, some pcs massive, dense, oolitic, fossils, some in a chalky matrix, Chert, wht

MS, crm to tan, f-xln, massice, dense to chalky matrix, fossils, some fossils, Chert, brn
 rare SH, gray, green

MS, crm to tan, f-xln, lesser tan, friable, chalky, firm
 Chert, gray, brn, blocky, white fossils

rare SH, blk, green, rare gas bubbles
 MS, crm to gray, vf-xln, sugary txt, firm to hard, scatt fossils, sli. chalky, Chert, brn, wht, fossils

MS, A.A., influx, gray, m-xln, m-gr oolitic pcs, soft, fossils, sub oolitic in part, silty
 SH, gray, pyrite

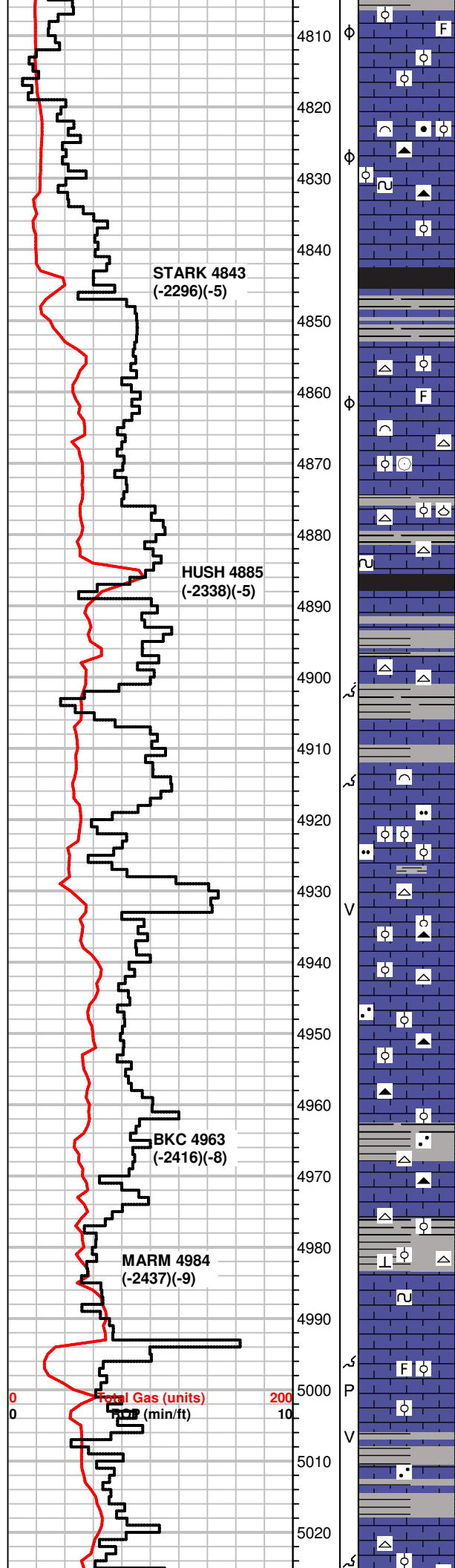
MS, lt. tan to crm, mic-xln, massive, dense, rare fossils, calcite veins, scatt SH, blk, gray, green, silty

MS, crm to lt. tan, f-xln, some chalky, friable pcs, scatt fossils, Chert, gray, milky wht
 SH, gray, brn, silty

rare SH, gray
 MS, lt. gray to crm, vf-xln, sli chalky in part, fossils, some pcs mic-xln, dense, scatt minerals, Chert, opaque to brn, fossilif., NS

WS-PS, crm to off white, f-xln, firm to hard, oolitic, m-gr to f-gr ooids in lite calcite mtrx, some pcs friable, calcite rhombs, scatt MS, A.A., Chert, brn, opaque, fossils

SH's, gray



MS-WS, crm to gray, f to m-xln, some chalky pcs, most moldic/oolitic, f to co-gr ooids, firm, fossils, NS

MS-WS, crm to brn, some mic-xln, dense, massive, fossilif pcs, carrying oolitic WS w/ dark ringed and fr-gr ooids in chalky to tite matrix, glauc/minerals, scatt Chert, brn

SH, blk, gray, green

MS, crm to brn, f-xln to massive, dense, sub oolitic pcs, scatt fossils, NS, rare Chert, wht, fossils

MS-WS, crm to tan, f-xln, some brn, mic-xln, chalky to dense, fossils (crinoids, brachs, ooids), some pcs oolitic, m-gr, firm, dull fluor, NS, Chert, opaque, fossils, glauc

SH, blk, gray

Scatt SH, gray, silty

MS, crm to tan, f-xln, some dense, fossils, scatt oolitic pcs in tite calcite matrix, Chert, white

MS, tan to crm, f-xln, dense, hard, sub oolitic to massive (featureless), some gray gritty pcs

MS, off white to crm, rare gray, silty MS, some pcs chalky, most dense, sub oolitic pcs scatt, hard, dull fluor, NS, Chert, tan

MS-WS, crm to tan, lt. gray, f to m-xln, gritty txt in part, some pcs oolitic, fossils, Chert, brn
SH, dk. gray to grat, sandy

SH, gray, WS, crm to gray, gritty, f-xln, firm to hard, scatt fossils, NS

MS, gray to crm, f-xln to chalky, suboolitic, dull fluor, NS, Chert, wht, brn, fossilif., SH, gray, limey

MS, gray to crm, mic-xln, dense, gritty looking, rare oolites in tite calcite mtrx, Chert, wht,
SH, gray, gritty/silty

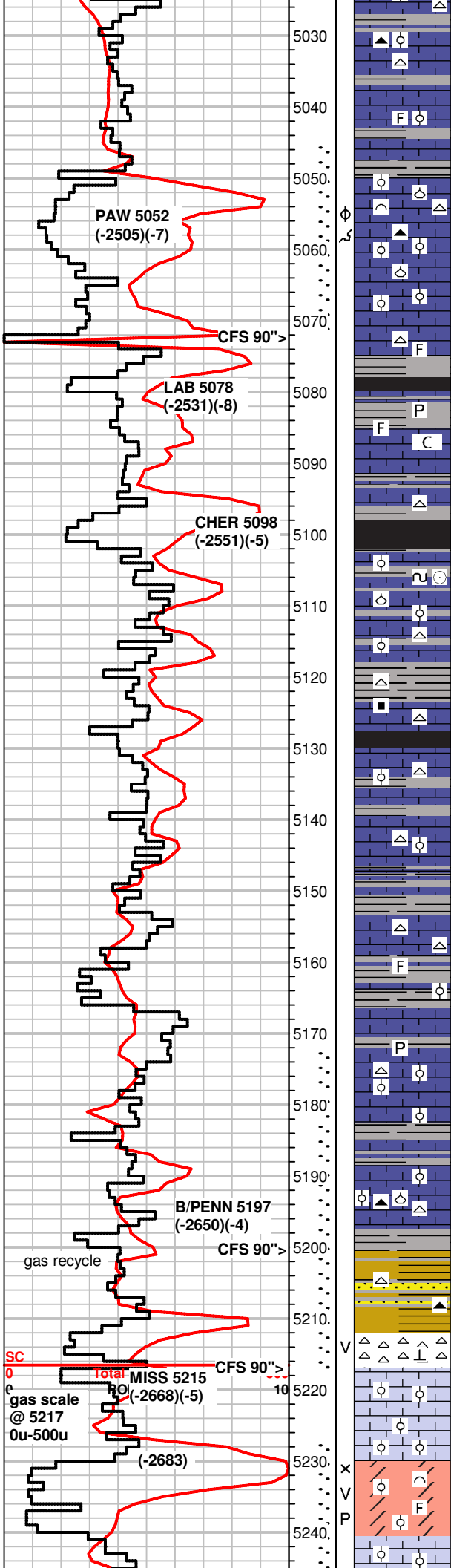
MS, crm to tan, scatt gray pcs, chalky to silty txt, soft, friable pcs, rare dense fossilif pcs, rare glauc
scatt SH, grays

SH, dk. gray, MS, crm to brn, mic to f-xln, denes to friable, scatt fossils, sub oolitic pcs scatt, NS

MS-WS, tan to brn, crm, f-xln, dense, pcs A.A., some gray, m-xln, gritty txt, hard, dull fluor, NS, sctt SH, gray

SH, grays, some pcs limey, silty
MS-WS, crm to brn, f-xln, sub oolitic, fossilif., scatt glauc/minerals,

DST #1 5045-5072
Pawnee
30-60-45-90
SB BOB/2min
NBB
SB BOB/3min
WBB surf blow
640' GIP
Rec:288' Fluid-
226' GOWCM
(30g,10o,20w,40m)
62' MCW (5m,95w)
IH 2641#
IF 70-113#



NS, Chert, opaque, tan, fossils

MS-WS, crm to tan, f- to mic-xln, dense to firm, sli. chalky pcs, sub oolitic in part, some pcs w/fossil frgmts, Chert, opaque rare SH, gray

MS, off white to crm, some lt. tan, chalky to f-xln, sub oolitic, mostly friable, some pcs dense, fossils scatt, SH, green, rare blk, gray, pyrite

MS-WS, crm to off wht, chalky to f-xln, suboolitic, fossils/bioclasic in part, some pcs dense, **rare very spty bright fluor, 1 pc inst. cut, good odor in bag, rare spotty stn in dry**, chert, wht, tan

WS-PS, tan to crm, f to mic-xln, dense oolitic in tite calcite mtrx, **fair odor in bag, rare very spty bright fluor, no cut**

SH, rare blk, gray, green, pyrite, some washed red?

MS-WS, crm to brn, mic to f-xln, some pcs chalky, scatt fossilif. pcs, sub oolitic in part, dense, some friable, pyrite, dull fluor, NS

MS-WS, vf-xln,gritty txt, fossil frgmts, sub oolitic, m-gr ooids, dense, NS, Chert, opaque, tan, fossils

SH, blk, gas bubbles, gray, scatt green

MS-WS, crm to gray, f-xln to earthy, some massive, dense, fossils (crinoids,brachs,ooids), calcite/glauc, Chert, bone wht to opaque, brn

MS, tan to crm, f-xln to massive, dense, fossil/oolitic in part, m-gr ooids in tite mtrx, Chert, wht

SH's, dk.gry to blk, carb

MS, crm to gray, f-xln, firm to hard, semopcs dense, fossils, dull fluor, NS, scatt Chert, wht, fossils

SH, blk, gray

WS-MS, crm to brn, f-xln, firm to hard, mottled, brn oolitic pcs, some suboolitic/fossilif., most pcs dense, cherty in part, scatt

SH, blk, gray, MS, crm to tan, f-xln to massive, rare fossils, firm to friable, mineral fluor, NS, Chert, wht fossils

SH, blk, gray, carb. flakes, pyrite

MS, crm to brn, some gray, mottled, f-xln, chalky to dense, fossils, Chert frgmts, sub oolitic, shaly in part

Inc, SH, gray, blk, limey pcs, fossils

MS-WS, crm to gray, f-xln, dense, scatt fossils, tite, some pcs sucrosic, dolomitic

SH, blk, green

MS-WS, crm to gray, f-xln, hard/dense, sub oolitic, fossils, pyrite, Chert, wht, opaque

MS, crm to tan, f- to mic-xln, massive to sli. chalky txt, some firm, most pcs dense, scatt fossils, **v. rare spotty bright fluor, 1 pc w/ milky cut**

SH, gray, blk, green, sandy in part

MS, crm to brn, f-xln, dense, friable, fossilif. gritty txt, scatt mineral specs, **scatt bright fluor, inst. cut(10/12pcs), faint odor**, Chert, wht, gray, brn

SH, sea green, mustard yellow, blk, gray

SH, varicolored, striated, sandy pcs

scatt Chert, wht, blk, opaque, rare SS clusters, green, f-gr

Chert, bone wht, grn, brn, blk, fossils, calcareous pcs, **faint odor in bag, dull mineral fluor, 1 pc w/ streaming cut, rare stn dry**

MS-WS, off white to crm, f-xln, dense, oolitic/fossilif, dull fluor, NS

MS-WS, off wht to crm, f-xln, dense, oolitic(m-gr) to sub oolitic, tite, rare Dolo, gray, vf-xln, hard, dull fluor, NS

Dolo, gray to crm, f-xln, massive to sugary txt, soft to firm, scatt f-gr oolitic pcs, dark ooids, **good odor in bag, min. to bright fluor, streaming cut from sel. pcs, some w/ resid. ring cut, spty to even stn, bleeding oil, rare live oil in tray**

ISIP 982#
FF 69-130#
FSIP 970#
FH 2641#
Temp 115°F
API RW .12 @ 83°F
CI 58,000ppm

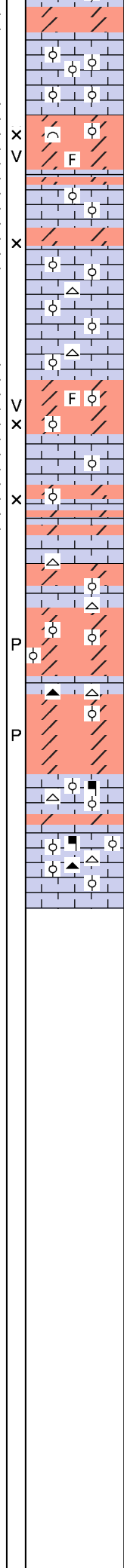
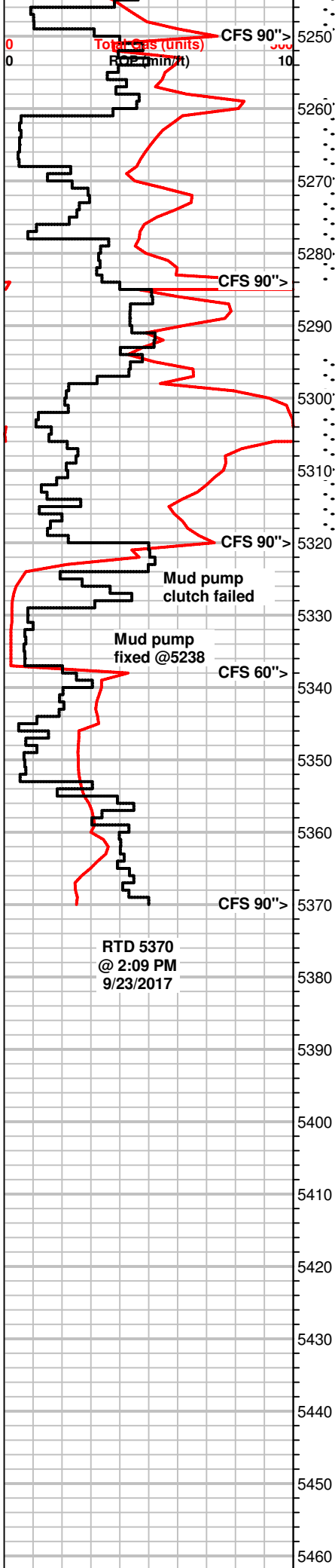
+120 UGK, +90 UGK recycle

DST #2 5172-5217
B/Penn Morrow
SB BOB/1min
NBB
SB BOB/immed,
GTS/30sec GA 1/4in Ch.
38.708 MCF/10min
49.813 MCF/20min
54.572 MCF/30min
59.331 MCF/40min
62.504 MCF/50min
65.677 MCF/60min
NBB
5149' GIP
Rec: 20' SGCM(2g,98m)
IH 2708#
IF 45-33#
ISIP 1280#
FF 21-42#
FSIP 1281#
FH 2538#
Temp 117°F

+50 UGK, +30 UGK recycle

+90 UGK, +30 UGK recycle

+350 UGK, + 215 UGK recycle



Dolo, crm to gray, f-xln, gritty to sugary txt, scatt fossils(carrying?), **fair odor, bleeding oil, inst cut few pcs**

WS-PS, crm to off wht, f-xln, m-gr oolitic, scatt fossils, hard to dense, some pcs brittle, dull fluor, NS

Dolo, crm to brn, f to m-xln, scatt sucrosic pcs, fossilif. to oolitic pcs, firm to friable, **fair odor, bleeding oil/gas bubbles, live oil in tray, partial to sat. stn, stream to milky cut**, int. xln to vuggy por.

WS-PS, crm to off wht, f-xln, tite, oolitic, NS

Dolo, crm to brn, f-xln, vf sucrosic to fn gr-gritty txt, **spotty to even stn, live oil, fair odor, inst. cut**, int-xln por.

MS-PS, off wht to crm, mic-xln, massive to earthy pcs, m-gr oolitic, fossils lesser towards base glauc specs, dull fluor, NS

Dolo, tan to brn, f-xln, earthy to oolitic, m-gr pcs, limey in part, **rare bright fluor, slow milky cut, rare inst. cut, spotty stn, no odor, sat. dry**,

MS-WS, crm to tan, f-xln, sub oolitic to earthy, dull fluor, NS

Scatt Dolo, tan to brn, f-xln, oolitic, firm to brittle, **rare bright fluor, no odor, no stn, resid. ring cut**, limey in part

MS-WS, crm to brn, f-xln, suboolitic, firm to hard

Dolo, brn to gray, f-xln, f-sucrosic txt, firm to hard, some pcs scatt oolitic-dec. amt, some mineral specs, NS

Dolo, lt. gray to f-xln, gritty to vf-sucrosic txt, tite, dull fluor, NS, PP por.

MS-WS, gray to brn, f-xln to m-xln, mottled, some mineral specs, oolitic in part, some pcs dolomitic, NS, Chert, wht

Dolo, gray to lt. tan, f-xln, gritty txt, vf-sucrosic, firm to hard, dull fluor, NS, PP por.

MS-WS, gray to tan, mottled, f-xln, oolitic to fossilif., Chert, wht

Dolo, gray to lt. tan, f-xln to vf-sucrosic, tite, dull fluor, NS

MS-WS, scatt PS, crm to tan, some brn, f-xln to mic-xln, dense, massive to fossilif/oolitic pcs, dark minerals/ooids, dull fluor, NS

+215 UGK, +100 UGK recycle

DST #3 5227-5250
MISS
30-60-60-120
SB BOB/10sec
NBB
SB BOB/immed GTS/1min
GA 1/8in Ch
6.513 MCF/10min
6.887 MCF/20min
7.635 MCF/30min
8.010 MCF/40min
8.758 MCF/50min
9.133 MCF/60min
5153' GIP
Rec: 80' OCM(20o,80m)
IH 2640#
IF 26-23#
ISIP 968#
FF 23-47#
FSIP 965#
FH 2699#
Temp 114°F

DST #4 5258-5284
MISS
30-60-60-120
FB BOB/min
NBB
SB BOB/1min
NBB
3934' GIP
Rec: 90' GOCM (20g,20o,80m)
IH 2674#
IF 19-29#
ISIP 1285#
FF 33-55#
FSIP 1286#
FH 2531#
Temp 116°F

DST #5 5294-5320
MISS
30-60-60-120
WB/blt to 1.5 in
NBB
WB/1 in
NBB
Rec: 80' WCM (30w,70m)
IH 2720#
IF 20-41#
ISIP 1404#
FF 43-62#
FSIP 1376#
FH 2566#
Temp 117°F
API Rw .15 @ 63°F
CI 58,000ppm

