

**US OIL RESOURCES, LLC  
POWERS LEASE  
SE.1/4, SECTION 2, T14S, R29W  
GOVE COUNTY, KANSAS**

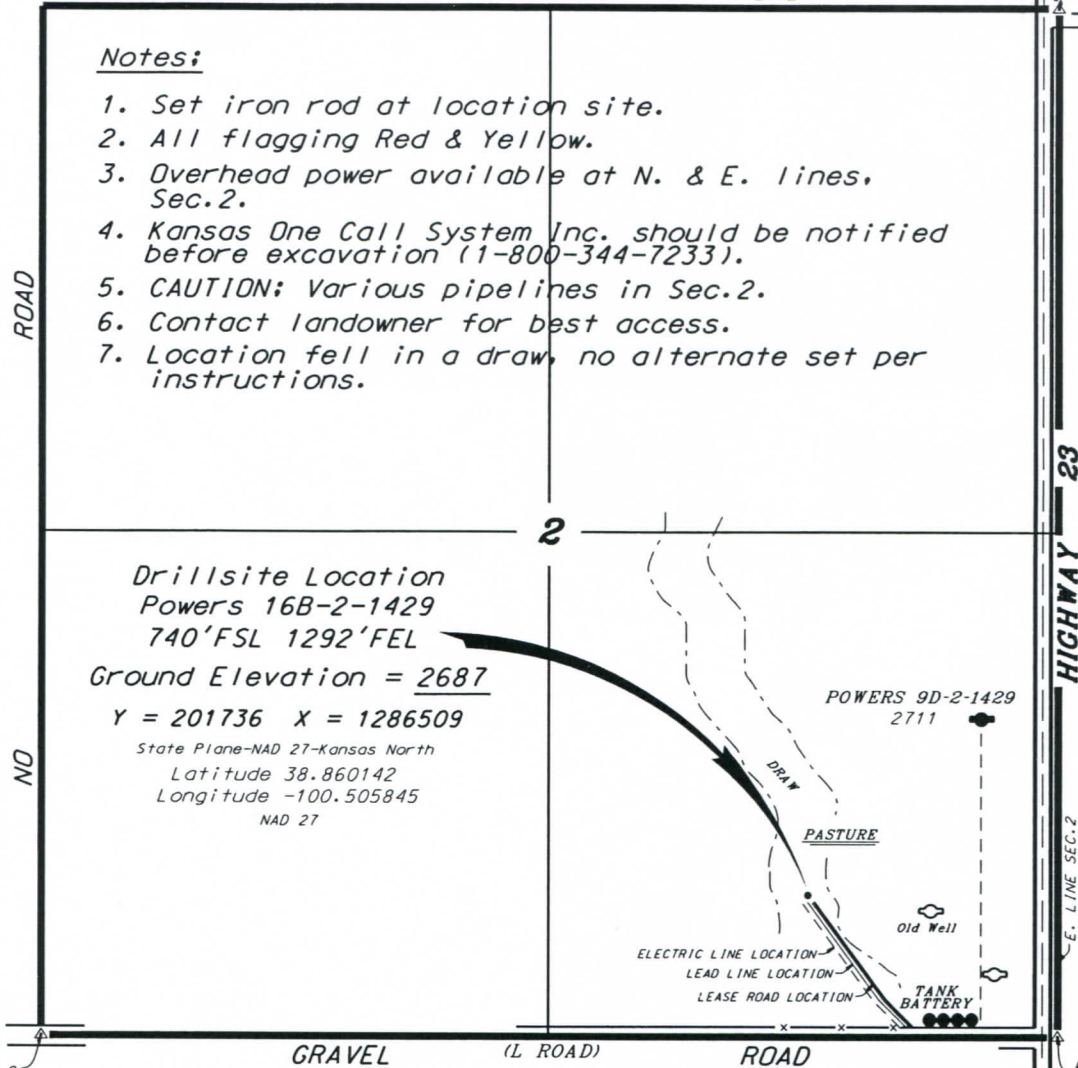
FOUND CAPPED IRON PIN  
AT NE. COR. SEC. 2 PER  
K.D.O.T. REFERENCES  
(22.5' E. OF CENTERLINE  
HIGHWAY 23)  
Y = 206331 X = 1287965

NO ROAD (M ROAD)

**Notes:**

1. Set iron rod at location site.
2. All flagging Red & Yellow.
3. Overhead power available at N. & E. lines, Sec. 2.
4. Kansas One Call System Inc. should be notified before excavation (1-800-344-7233).
5. CAUTION; Various pipelines in Sec. 2.
6. Contact landowner for best access.
7. Location fell in a draw, no alternate set per instructions.

\*Ingress and egress to location as shown on this plat is per usage only and may not be legally opened for public use. Contact landowner, tenant and county road department for access.



**Drillsite Location**  
Powers 16B-2-1429  
740'FSL 1292'FEL  
Ground Elevation = 2687  
Y = 201736 X = 1286509  
State Plane-NAD 27-Kansas North  
Latitude 38.860142  
Longitude -100.505845  
NAD 27

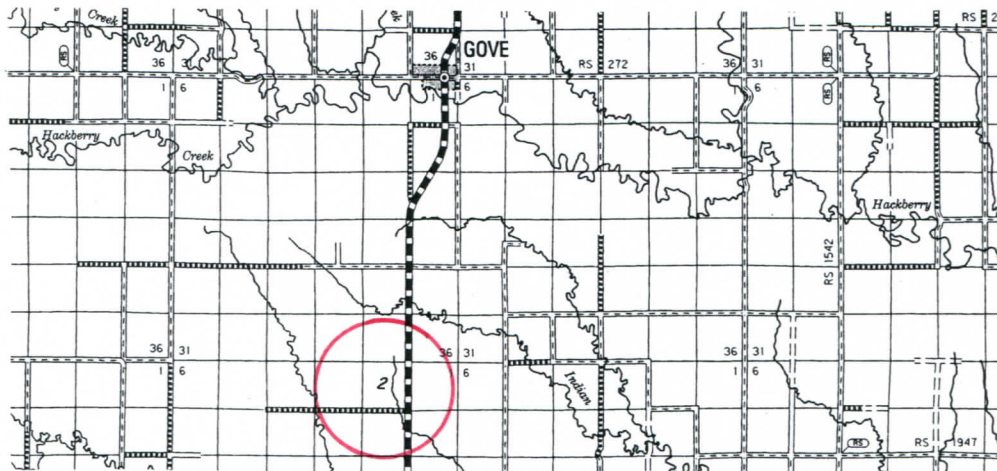
POWERS 9D-2-1429  
2711

SCALE 1" = 1000'



APP. SW. CORNER SEC. 2  
Y = 201122 X = 1282495

FOUND 1" SQUARE BAR  
AT SE. COR. SEC. 2 PER  
K.D.O.T. REFERENCES  
(50.85' E. OF CENTERLINE  
HIGHWAY 23)  
Y = 200955 X = 1287774



\*Controlling data is based upon the best maps and photographs available to us and upon a regular section of land containing 640 acres.

\*Approximate section lines were determined using the normal standard of care of oilfield surveyors practicing in the state of Kansas. The section corners, which establish the precise section lines, were not necessarily located, and the exact location of the drillsite location in the section is not guaranteed. Therefore, the operator securing this service and accepting this plat and all other parties relying thereon agree to hold Central Kansas Oilfield Services, Inc., its officers and employees harmless from all losses, costs and expenses and said entities released from any liability from incidental or consequential damages.

\*Elevations derived from National Geodetic Vertical Datum.

Date January 5, 2018

**CENTRAL KANSAS OILFIELD SERVICES, INC. (620)792-1977**