



## DRILL STEM TEST REPORT

Prepared For: **Brito Oil Company**

1223 N Rock Rd  
Wichita, KS 67206

ATTN: Saman Sharifaie

### **Cook #1-10**

#### **10-6s-35w Thomas KS**

Start Date: 2017.10.03 @ 09:13:21

End Date: 2017.10.03 @ 14:29:21

Job Ticket #: 64255                      DST #: 1

Trilobite Testing, Inc  
PO Box 362 Hays, KS 67601  
ph: 785-625-4778 fax: 785-625-5620

Printed: 2017.10.09 @ 11:20:41



**TRILOBITE  
TESTING, INC.**

# DRILL STEM TEST REPORT

Brito Oil Company

**10-6s-35w Thomas KS**

1223 N Rock Rd  
Wichita, KS 67206

**Cook #1-10**

Job Ticket: 64255

**DST#: 1**

ATTN: Saman Sharifaie

Test Start: 2017.10.03 @ 09:13:21

## GENERAL INFORMATION:

Formation: **Tarkio**

Deviated: No Whipstock: ft (KB)

Time Tool Opened: 10:51:51

Time Test Ended: 14:29:21

Test Type: Conventional Bottom Hole (Initial)

Tester: Brandon Turley

Unit No: 79

**Interval: 3737.00 ft (KB) To 3805.00 ft (KB) (TVD)**

Reference Elevations: 3263.00 ft (KB)

Total Depth: 3805.00 ft (KB) (TVD)

3258.00 ft (CF)

Hole Diameter: 7.88 inches Hole Condition: Good

KB to GR/CF: 5.00 ft

**Serial #: 8166 Outside**

Press@RunDepth: 26.78 psig @ 3738.00 ft (KB)

Capacity: 8000.00 psig

Start Date: 2017.10.03

End Date:

2017.10.03

Last Calib.: 2017.10.03

Start Time: 09:13:26

End Time:

14:29:20

Time On Btm: 2017.10.03 @ 10:50:21

Time Off Btm: 2017.10.03 @ 12:52:51

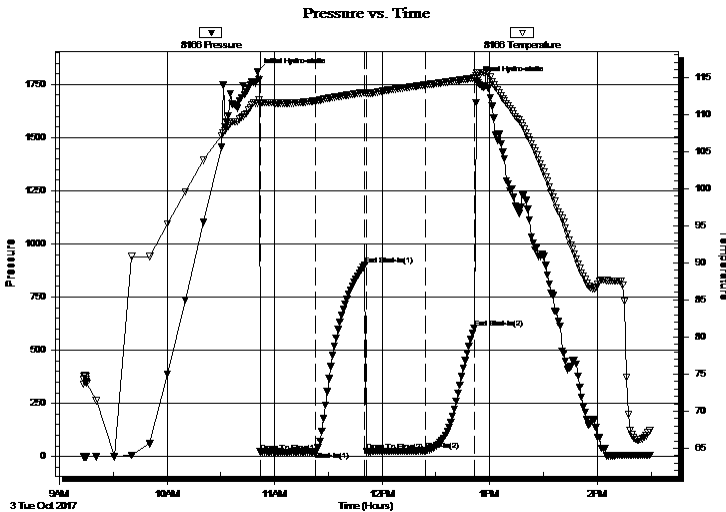
TEST COMMENT: IF: 1/4" blow died in 10 min.

IS: No return.

FF: Surface blow.

FS: No return.

## PRESSURE SUMMARY



| Time (Min.) | Pressure (psig) | Temp (deg F) | Annotation           |
|-------------|-----------------|--------------|----------------------|
| 0           | 1807.99         | 111.51       | Initial Hydro-static |
| 2           | 21.52           | 111.42       | Open To Flow (1)     |
| 33          | 22.48           | 111.82       | Shut-In(1)           |
| 60          | 899.14          | 112.95       | End Shut-In(1)       |
| 61          | 21.88           | 112.75       | Open To Flow (2)     |
| 94          | 26.78           | 113.96       | Shut-In(2)           |
| 121         | 604.73          | 114.87       | End Shut-In(2)       |
| 123         | 1767.77         | 115.55       | Final Hydro-static   |

## Recovery

| Length (ft) | Description  | Volume (bbl) |
|-------------|--------------|--------------|
| 15.00       | ocm 5%o 95%m | 0.07         |
|             |              |              |
|             |              |              |
|             |              |              |
|             |              |              |

## Gas Rates

| Choke (inches) | Pressure (psig) | Gas Rate (Mcf/d) |
|----------------|-----------------|------------------|
|                |                 |                  |





**TRILOBITE  
TESTING, INC.**

# DRILL STEM TEST REPORT

**TOOL DIAGRAM**

Brito Oil Company

**10-6s-35w Thomas KS**

1223 N Rock Rd  
Wichita, KS 67206

**Cook #1-10**

Job Ticket: 64255

**DST#: 1**

ATTN: Saman Sharifaie

Test Start: 2017.10.03 @ 09:13:21

## Tool Information

|                           |                    |                       |                                |                                    |
|---------------------------|--------------------|-----------------------|--------------------------------|------------------------------------|
| Drill Pipe:               | Length: 3524.00 ft | Diameter: 3.80 inches | Volume: 49.43 bbl              | Tool Weight: 1500.00 lb            |
| Heavy Wt. Pipe:           | Length: 0.00 ft    | Diameter: 0.00 inches | Volume: 0.00 bbl               | Weight set on Packer: 30000.00 lb  |
| Drill Collar:             | Length: 206.00 ft  | Diameter: 2.25 inches | Volume: 1.01 bbl               | Weight to Pull Loose: 65000.00 lb  |
|                           |                    |                       | <u>Total Volume: 50.44 bbl</u> | Tool Chased 0.00 ft                |
| Drill Pipe Above KB:      | 13.00 ft           |                       |                                | String Weight: Initial 60000.00 lb |
| Depth to Top Packer:      | 3737.00 ft         |                       |                                | Final 60000.00 lb                  |
| Depth to Bottom Packer:   | ft                 |                       |                                |                                    |
| Interval between Packers: | 68.00 ft           |                       |                                |                                    |
| Tool Length:              | 88.00 ft           |                       |                                |                                    |
| Number of Packers:        | 2                  | Diameter: 6.75 inches |                                |                                    |

Tool Comments:

| Tool Description | Length (ft) | Serial No. | Position | Depth (ft) | Accum. Lengths |
|------------------|-------------|------------|----------|------------|----------------|
|------------------|-------------|------------|----------|------------|----------------|

|                 |       |      |         |         |                               |
|-----------------|-------|------|---------|---------|-------------------------------|
| Stubb           | 1.00  |      |         | 3718.00 |                               |
| Shut In Tool    | 5.00  |      |         | 3723.00 |                               |
| Hydraulic tool  | 5.00  |      |         | 3728.00 |                               |
| Packer          | 5.00  |      |         | 3733.00 | 20.00 Bottom Of Top Packer    |
| Packer          | 4.00  |      |         | 3737.00 |                               |
| Stubb           | 1.00  |      |         | 3738.00 |                               |
| Recorder        | 0.00  | 8875 | Inside  | 3738.00 |                               |
| Recorder        | 0.00  | 8166 | Outside | 3738.00 |                               |
| Perforations    | 29.00 |      |         | 3767.00 |                               |
| Change Over Sub | 1.00  |      |         | 3768.00 |                               |
| Drill Pipe      | 31.00 |      |         | 3799.00 |                               |
| Change Over Sub | 1.00  |      |         | 3800.00 |                               |
| Bullnose        | 5.00  |      |         | 3805.00 | 68.00 Bottom Packers & Anchor |

**Total Tool Length: 88.00**



**TRILOBITE  
TESTING, INC.**

**DRILL STEM TEST REPORT**

**FLUID SUMMARY**

Brito Oil Company

**10-6s-35w Thomas KS**

1223 N Rock Rd  
Wichita, KS 67206

**Cook #1-10**

Job Ticket: 64255

**DST#: 1**

ATTN: Saman Sharifaie

Test Start: 2017.10.03 @ 09:13:21

**Mud and Cushion Information**

Mud Type: Gel Chem

Cushion Type:

Oil API:

0 deg API

Mud Weight: 9.00 lb/gal

Cushion Length:

ft

Water Salinity:

0 ppm

Viscosity: 59.00 sec/qt

Cushion Volume:

bbbl

Water Loss: 6.39 in<sup>3</sup>

Gas Cushion Type:

Resistivity: 0.00 ohm.m

Gas Cushion Pressure:

psig

Salinity: 3000.00 ppm

Filter Cake: 1.00 inches

**Recovery Information**

Recovery Table

| Length<br>ft | Description  | Volume<br>bbl |
|--------------|--------------|---------------|
| 15.00        | ocm 5%o 95%m | 0.074         |

Total Length: 15.00 ft      Total Volume: 0.074 bbl

Num Fluid Samples: 0

Num Gas Bombs: 0

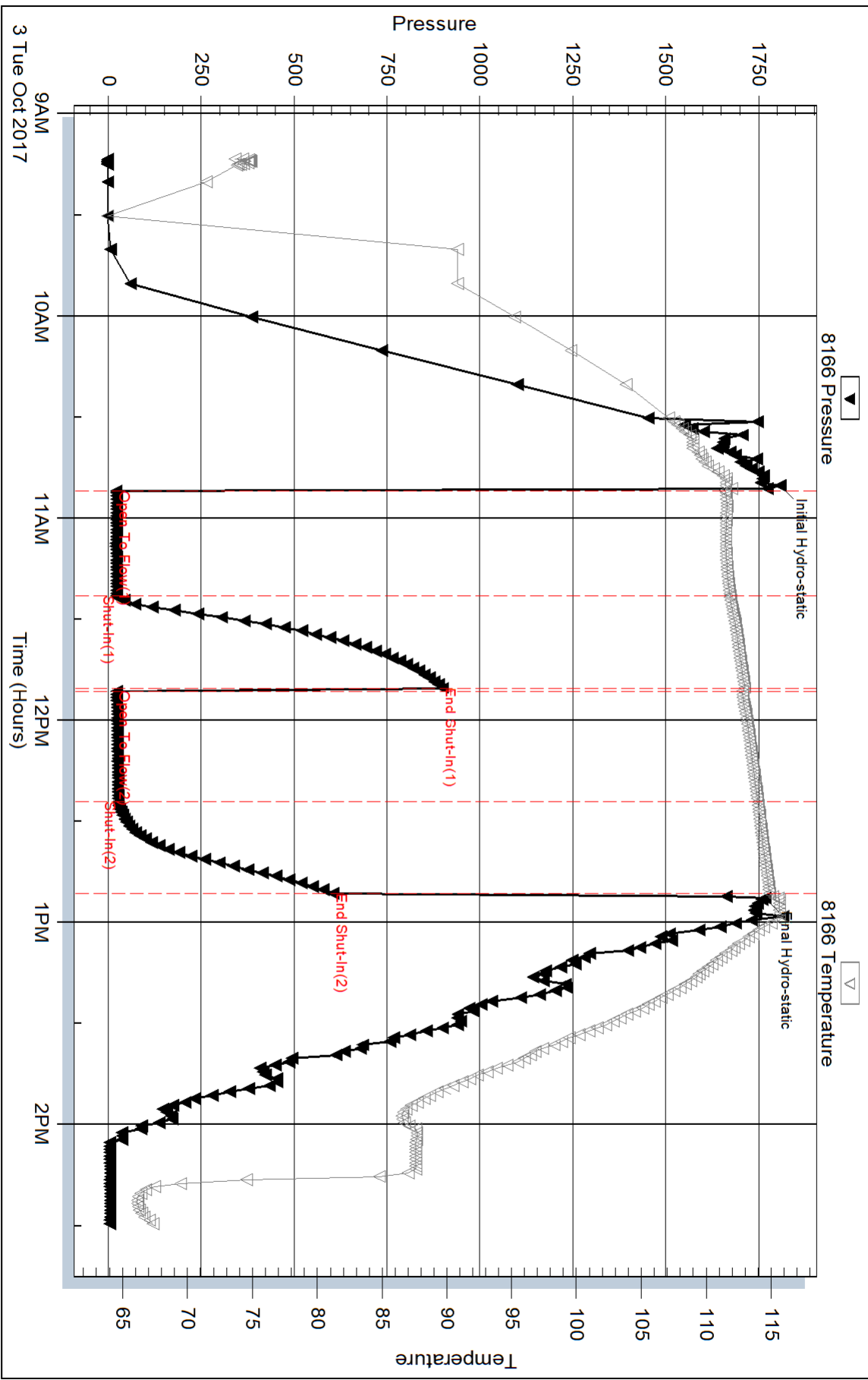
Serial #:

Laboratory Name:

Laboratory Location:

Recovery Comments:

# Pressure vs. Time



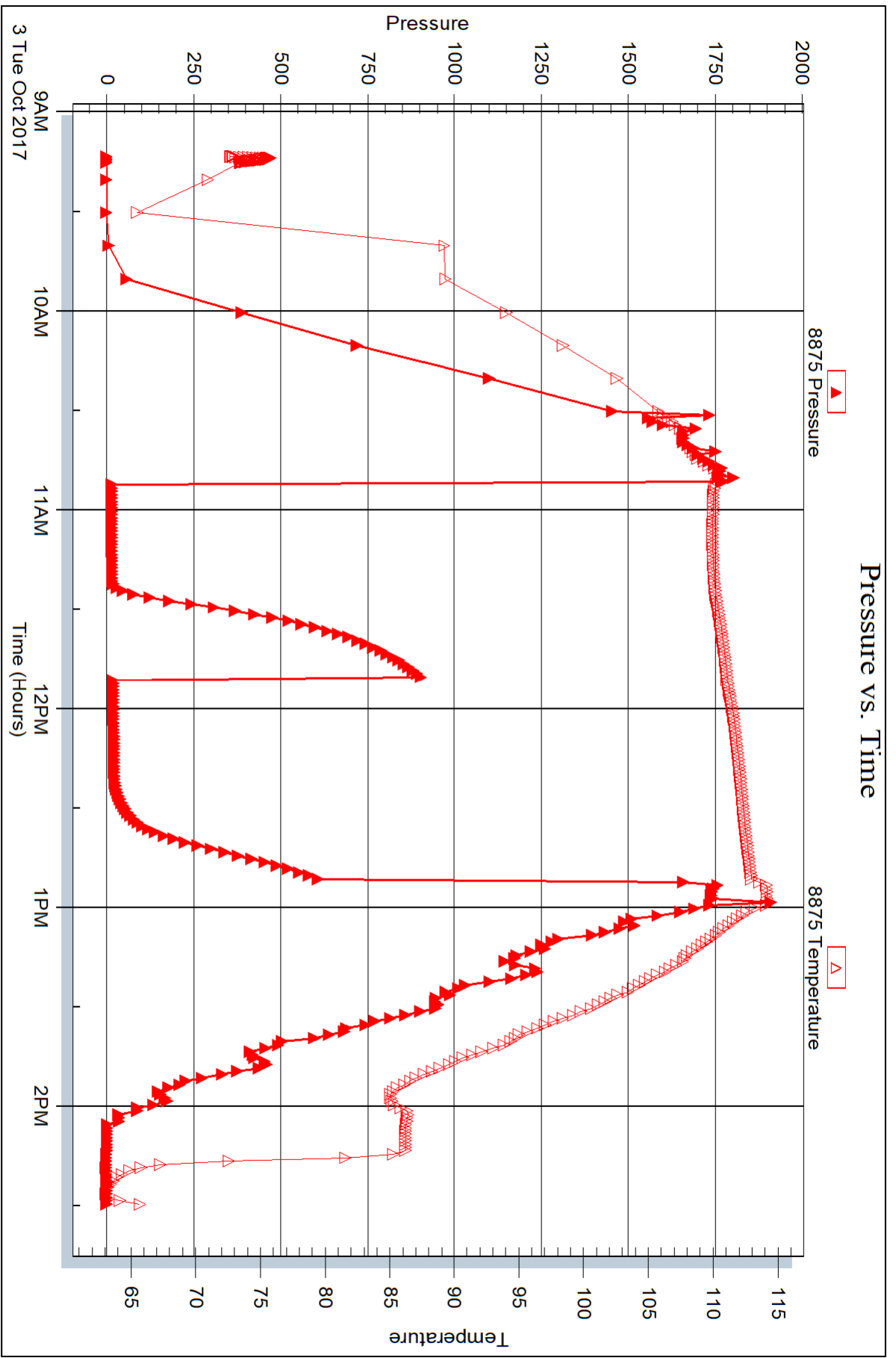
Serial #: 8875

Inside

Brito Oil Company

Cook #1-10

DST Test Number: 1



Trilobite Testing, Inc

Ref. No: 64255

Printed: 2017.10.09 @ 11:20:42



## DRILL STEM TEST REPORT

Prepared For: **Brito Oil Company**

1223 N Rock Rd  
Wichita, KS 67206

ATTN: Saman Sharifaie

### **Cook #1-10**

#### **10-6s-35w Thomas KS**

Start Date: 2017.10.05 @ 21:51:28

End Date: 2017.10.06 @ 04:19:58

Job Ticket #: 64256                      DST #: 2

Trilobite Testing, Inc  
PO Box 362 Hays, KS 67601  
ph: 785-625-4778 fax: 785-625-5620

Printed: 2017.10.09 @ 11:20:12





**TRILOBITE TESTING, INC.**

# DRILL STEM TEST REPORT

Brito Oil Company

**10-6s-35w Thomas KS**

1223 N Rock Rd  
Wichita, KS 67206

**Cook #1-10**

Job Ticket: 64256

**DST#: 2**

ATTN: Saman Sharifaie

Test Start: 2017.10.05 @ 21:51:28

## GENERAL INFORMATION:

Formation: **Pawnee**

Deviated: No Whipstock: ft (KB)

Time Tool Opened: 00:09:28

Time Test Ended: 04:19:58

Test Type: Conventional Bottom Hole (Reset)

Tester: Brandon Turley

Unit No: 79

**Interval: 4478.00 ft (KB) To 4520.00 ft (KB) (TVD)**

Reference Elevations: 3263.00 ft (KB)

Total Depth: 4520.00 ft (KB) (TVD)

3258.00 ft (CF)

Hole Diameter: 7.88 inches Hole Condition: Good

KB to GR/CF: 5.00 ft

**Serial #: 8166 Outside**

Press@RunDepth: 103.68 psig @ 4479.00 ft (KB)

Capacity: 8000.00 psig

Start Date: 2017.10.05

End Date:

2017.10.06

Last Calib.: 2017.10.06

Start Time: 21:51:33

End Time:

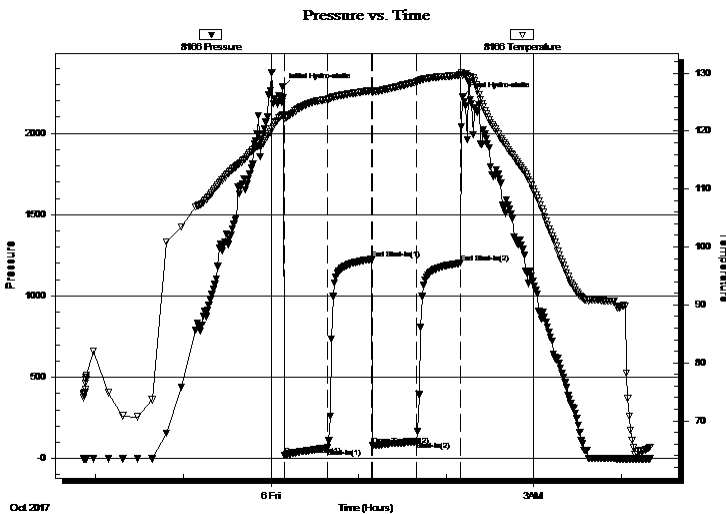
04:19:57

Time On Btm: 2017.10.06 @ 00:07:58

Time Off Btm: 2017.10.06 @ 02:11:28

**TEST COMMENT:** IF: BOB in 23 min.  
IS: Surface blow built to 1/4" died in 25.  
FF: BOB in 20 min.  
FS: Surface blow built to 1 1/2".

## PRESSURE SUMMARY



| Time (Min.) | Pressure (psig) | Temp (deg F) | Annotation           |
|-------------|-----------------|--------------|----------------------|
| 0           | 2283.81         | 122.75       | Initial Hydro-static |
| 2           | 21.75           | 122.26       | Open To Flow (1)     |
| 31          | 65.59           | 125.47       | Shut-In(1)           |
| 61          | 1225.15         | 127.02       | End Shut-In(1)       |
| 62          | 79.11           | 126.70       | Open To Flow (2)     |
| 92          | 103.68          | 128.45       | Shut-In(2)           |
| 122         | 1201.57         | 129.66       | End Shut-In(2)       |
| 124         | 2227.60         | 129.66       | Final Hydro-static   |

## Recovery

| Length (ft) | Description         | Volume (bbl) |
|-------------|---------------------|--------------|
| 124.00      | gocm 10%g 40%o 50%m | 0.61         |
| 144.00      | go 10%g 90%o        | 1.27         |
| 0.00        | 104' GIP            | 0.00         |
|             |                     |              |
|             |                     |              |

\* Recovery from multiple tests

## Gas Rates

|  | Choke (inches) | Pressure (psig) | Gas Rate (Mcf/d) |
|--|----------------|-----------------|------------------|
|  |                |                 |                  |





**TRILOBITE  
TESTING, INC.**

## DRILL STEM TEST REPORT

**TOOL DIAGRAM**

Brito Oil Company

**10-6s-35w Thomas KS**

1223 N Rock Rd  
Wichita, KS 67206

**Cook #1-10**

Job Ticket: 64256

**DST#: 2**

ATTN: Saman Sharifaie

Test Start: 2017.10.05 @ 21:51:28

### Tool Information

|                           |                    |                       |                                |                                    |
|---------------------------|--------------------|-----------------------|--------------------------------|------------------------------------|
| Drill Pipe:               | Length: 4272.00 ft | Diameter: 3.80 inches | Volume: 59.92 bbl              | Tool Weight: 1500.00 lb            |
| Heavy Wt. Pipe:           | Length: 0.00 ft    | Diameter: 0.00 inches | Volume: 0.00 bbl               | Weight set on Packer: 30000.00 lb  |
| Drill Collar:             | Length: 206.00 ft  | Diameter: 2.25 inches | Volume: 1.01 bbl               | Weight to Pull Loose: 75000.00 lb  |
|                           |                    |                       | <u>Total Volume: 60.93 bbl</u> | Tool Chased 0.00 ft                |
| Drill Pipe Above KB:      | 20.00 ft           |                       |                                | String Weight: Initial 60000.00 lb |
| Depth to Top Packer:      | 4478.00 ft         |                       |                                | Final 60000.00 lb                  |
| Depth to Bottom Packer:   | ft                 |                       |                                |                                    |
| Interval between Packers: | 42.00 ft           |                       |                                |                                    |
| Tool Length:              | 62.00 ft           |                       |                                |                                    |
| Number of Packers:        | 2                  | Diameter: 6.75 inches |                                |                                    |

Tool Comments:

| Tool Description | Length (ft) | Serial No. | Position | Depth (ft) | Accum. Lengths |
|------------------|-------------|------------|----------|------------|----------------|
|------------------|-------------|------------|----------|------------|----------------|

|                 |       |      |         |         |                               |
|-----------------|-------|------|---------|---------|-------------------------------|
| Stubb           | 1.00  |      |         | 4459.00 |                               |
| Shut In Tool    | 5.00  |      |         | 4464.00 |                               |
| Hydraulic tool  | 5.00  |      |         | 4469.00 |                               |
| Packer          | 5.00  |      |         | 4474.00 | 20.00 Bottom Of Top Packer    |
| Packer          | 4.00  |      |         | 4478.00 |                               |
| Stubb           | 1.00  |      |         | 4479.00 |                               |
| Recorder        | 0.00  | 8875 | Inside  | 4479.00 |                               |
| Recorder        | 0.00  | 8166 | Outside | 4479.00 |                               |
| Perforations    | 3.00  |      |         | 4482.00 |                               |
| Change Over Sub | 1.00  |      |         | 4483.00 |                               |
| Drill Pipe      | 31.00 |      |         | 4514.00 |                               |
| Change Over Sub | 1.00  |      |         | 4515.00 |                               |
| Bullnose        | 5.00  |      |         | 4520.00 | 42.00 Bottom Packers & Anchor |

**Total Tool Length: 62.00**



**TRILOBITE  
TESTING, INC.**

# DRILL STEM TEST REPORT

**FLUID SUMMARY**

Brito Oil Company

**10-6s-35w Thomas KS**

1223 N Rock Rd  
Wichita, KS 67206

**Cook #1-10**

Job Ticket: 64256

**DST#: 2**

ATTN: Saman Sharifaie

Test Start: 2017.10.05 @ 21:51:28

## Mud and Cushion Information

Mud Type: Gel Chem

Cushion Type:

Oil API:

28 deg API

Mud Weight: 9.00 lb/gal

Cushion Length:

ft

Water Salinity:

0 ppm

Viscosity: 59.00 sec/qt

Cushion Volume:

bbbl

Water Loss: 5.59 in<sup>3</sup>

Gas Cushion Type:

Resistivity: 0.00 ohm.m

Gas Cushion Pressure:

psig

Salinity: 3500.00 ppm

Filter Cake: 1.00 inches

## Recovery Information

Recovery Table

| Length<br>ft | Description         | Volume<br>bbl |
|--------------|---------------------|---------------|
| 124.00       | gocm 10%g 40%o 50%m | 0.610         |
| 144.00       | go 10%g 90%o        | 1.273         |
| 0.00         | 104' GIP            | 0.000         |

Total Length: 268.00 ft      Total Volume: 1.883 bbl

Num Fluid Samples: 0

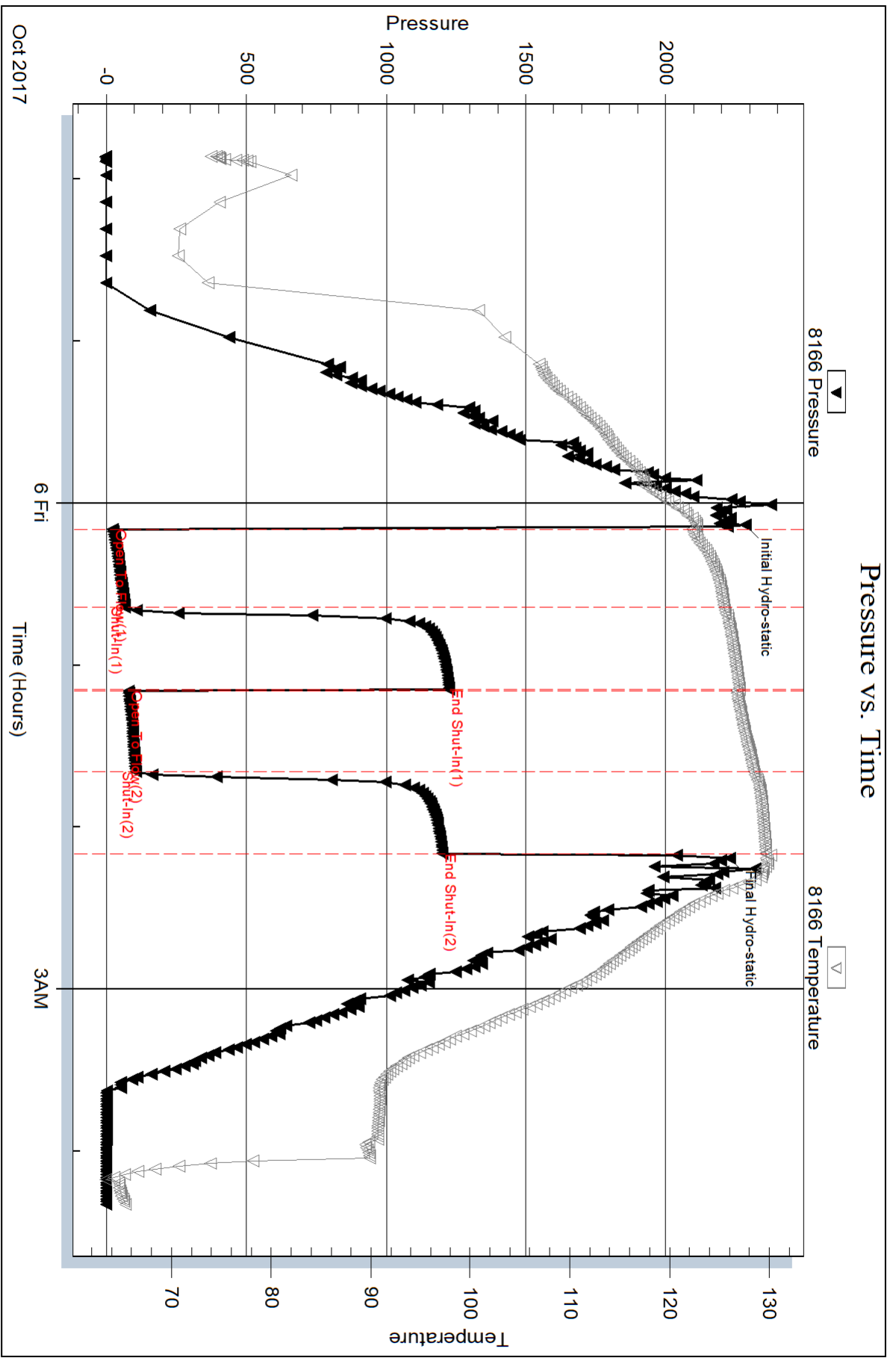
Num Gas Bombs: 0

Serial #:

Laboratory Name:

Laboratory Location:

Recovery Comments: 28@60=28



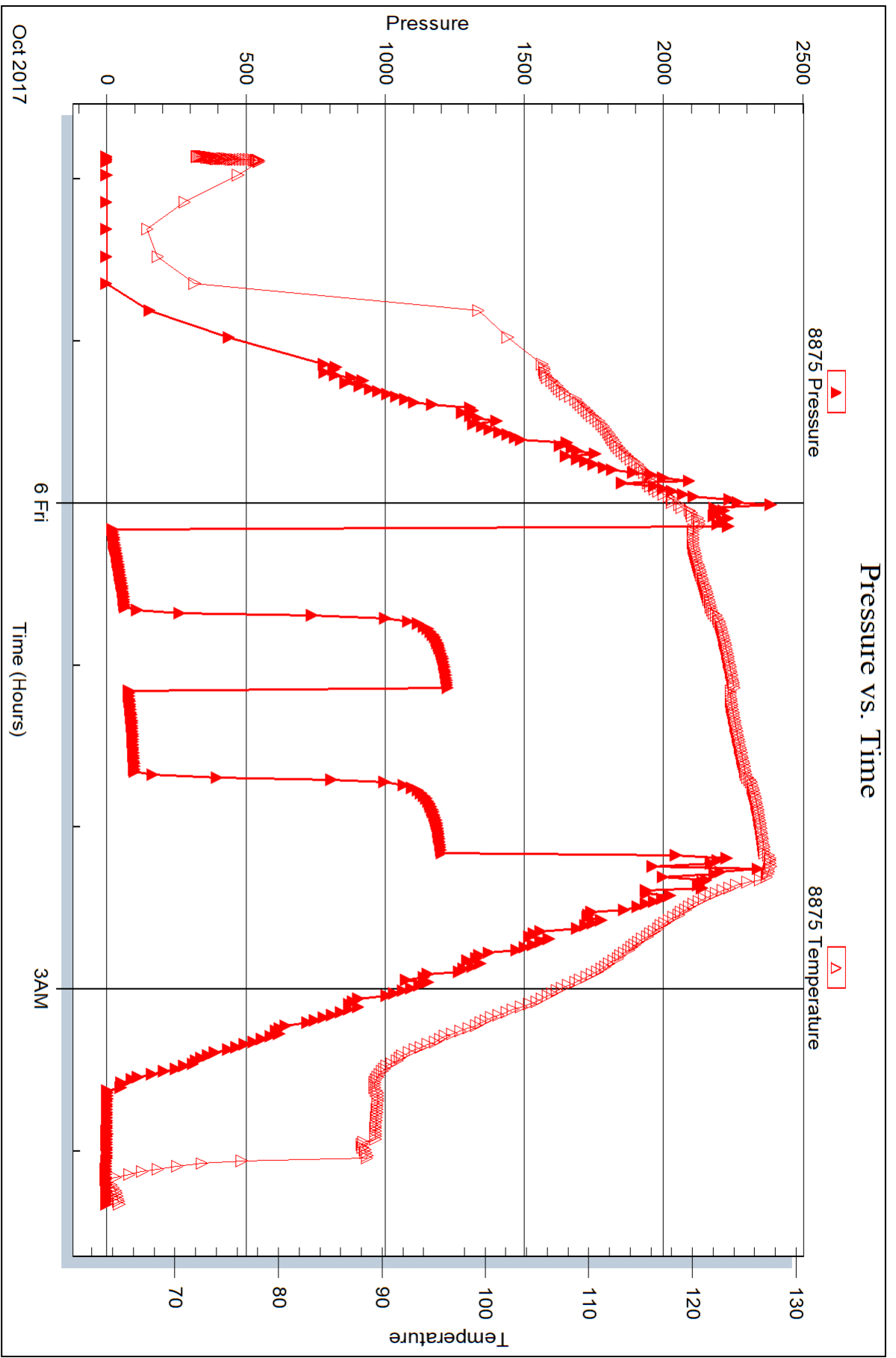
Serial #: 8875

Inside

Brito Oil Company

Cook #1-10

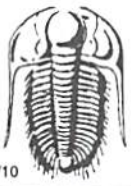
DST Test Number: 2



Trilobite Testing, Inc

Ref. No: 64256

Printed: 2017.10.09 @ 11:20:15



# TRILOBITE TESTING INC.

1515 Commerce Parkway • Hays, Kansas 67601

## Test Ticket

NO. **64255**

4/10

Well Name & No. Cook 1-10 Test No. 1 Date 10-3-17  
 Company Brito oil company Elevation 3258 KB 3258 GL  
 Address 1223 N Rock Rd Wichita, KS 67206  
 Co. Rep / Geo. Samir Sharif Rig Murfin #24  
 Location: Sec. 10 Twp. 6 Rge. 35 Co. Thomas State KS

Interval Tested 3737 3805 Zone Tested Tarkio  
 Anchor Length 68 Drill Pipe Run 3524 Mud Wt. 8.7  
 Top Packer Depth 3732 Drill Collars Run 206 Vis 59  
 Bottom Packer Depth 3737 Wt. Pipe Run — WL 6.4  
 Total Depth 3805 Chlorides 3000 ppm System LCM 4  
 Blow Description IF: 1/4 blow died in 10 min.  
IS: No return,  
FF: Surfaces blow,  
FS: No return,

| Rec       | Feet of    | %gas     | %oil | %water    | %mud |
|-----------|------------|----------|------|-----------|------|
| <u>15</u> | <u>OCM</u> | <u>5</u> |      | <u>95</u> |      |
| Rec       | Feet of    | %gas     | %oil | %water    | %mud |
| Rec       | Feet of    | %gas     | %oil | %water    | %mud |
| Rec       | Feet of    | %gas     | %oil | %water    | %mud |
| Rec       | Feet of    | %gas     | %oil | %water    | %mud |

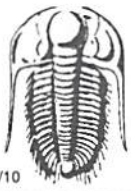
Rec Total 15 BHT 114 Gravity — API RW — @ — °F Chlorides — ppm

(A) Initial Hydrostatic 1807  Test 1050 T-On Location 8:30  
 (B) First Initial Flow 21  Jars — T-Started 9:13  
 (C) First Final Flow 22  Safety Joint — T-Open 10:51  
 (D) Initial Shut-In 899  Circ Sub NIL T-Pulled 12:51  
 (E) Second Initial Flow 21  Hourly Standby — T-Out 14:30  
 (F) Second Final Flow 26  Mileage 200 - 116rt 87  
 (G) Final Shut-In 604  Sampler —  
 (H) Final Hydrostatic 1767  Straddle —  
 Shale Packer —  
 Extra Packer —  
 Extra Recorder —  
 Day Standby —  
 Accessibility —  
 Sub Total 1137

Initial Open 30  
 Initial Shut-In 30  
 Final Flow 30  
 Final Shut-In 30

Comments —  
 Ruined Shale Packer —  
 Ruined Packer —  
 Extra Copies —  
 Sub Total 0  
 Total 1137  
 MP/DST Disc't —

Approved By \_\_\_\_\_ Our Representative [Signature]  
 Trilobite Testing Inc. shall not be liable for damaged of any kind of the property or personnel of the one for whom a test is made, or for any loss suffered or sustained, directly or indirectly, through the use of its equipment, or its statements or opinion concerning the results of any test, tools lost or damaged in the hole shall be paid for at cost by the party for whom the test is made.



# TRILOBITE TESTING INC.

1515 Commerce Parkway • Hays, Kansas 67601

## Test Ticket

NO. **64256**

Well Name & No. Look 1-10 Test No. 2 Date 10-5-17  
 Company Brito oil company Elevation 3263 KB 3258 GL  
 Address \_\_\_\_\_  
 Co. Rep / Geo. Samir Sharifgic Rig Murfin 24  
 Location: Sec. 10 Twp. 6 Rge. 35 Co. Thomas State KS

Interval Tested 4478 4520 Zone Tested PgWnee  
 Anchor Length \_\_\_\_\_ 42 Drill Pipe Run 4272 Mud Wt. 9.2  
 Top Packer Depth \_\_\_\_\_ 4473 Drill Collars Run 206 Vis 59  
 Bottom Packer Depth \_\_\_\_\_ 4478 Wt. Pipe Run \_\_\_\_\_ WL 5.6  
 Total Depth \_\_\_\_\_ 4520 Chlorides 3500 ppm System LCM 3

Blow Description #F! BoB in 23 min.  
#S! Surface blow built to 1/4 died in 25.  
#F! BoB in 20 min.  
#S! Surface blow built to 1/2.

| Rec        | Feet of        | %gas      | %oil      | %water    | %mud |
|------------|----------------|-----------|-----------|-----------|------|
| <u>144</u> | <u>90</u>      | <u>10</u> | <u>90</u> |           |      |
| <u>124</u> | <u>90cm</u>    | <u>10</u> | <u>40</u> | <u>50</u> |      |
|            | <u>104 GAP</u> |           |           |           |      |
|            |                |           |           |           |      |
|            |                |           |           |           |      |

Rec Total 268 BHT 129 Gravity 28 API RW \_\_\_\_\_ @ \_\_\_\_\_ °F Chlorides \_\_\_\_\_ ppm

(A) Initial Hydrostatic 2283  Test 1150  
 (B) First Initial Flow 21  Jars \_\_\_\_\_  
 (C) First Final Flow 65  Safety Joint \_\_\_\_\_  
 (D) Initial Shut-In 1225  Circ Sub NIL  
 (E) Second Initial Flow 79  Hourly Standby \_\_\_\_\_  
 (F) Second Final Flow 103  Mileage 200-X2  
 (G) Final Shut-In 1201  Sampler \_\_\_\_\_  
 (H) Final Hydrostatic 2227  Straddle \_\_\_\_\_  
 Shale Packer \_\_\_\_\_  
 Extra Packer \_\_\_\_\_  
 Extra Recorder \_\_\_\_\_  
 Day Standby 1.5d 18.5h  
 Accessibility \_\_\_\_\_  
 Sub Total 1324

T-On Location 21:00  
 T-Started 21:51  
 T-Open 00:09  
 T-Pulled 2:09  
 T-Out 4:22  
 Comments loaded at 13:00 on 10-7-17  
 Ruined Shale Packer \_\_\_\_\_  
 Ruined Packer \_\_\_\_\_  
 Extra Copies \_\_\_\_\_  
 Sub Total 616.67  
 Total 1940.67  
 MP/DST Disc't \_\_\_\_\_

Approved By \_\_\_\_\_ Our Representative

Trilobite Testing Inc. shall not be liable for damaged of any kind of the property or personnel of the one for whom a test is made, or for any loss suffered or sustained, directly or indirectly, through the use of its equipment, or its statements or opinion concerning the results of any test, tools lost or damaged in the hole shall be paid for at cost by the party for whom the test is made.