

# Saman Sharifaie

## Petroleum Geologist

### GEOLOGIST'S REPORT

#### DRILLING TIME AND SAMPLE LOG

COMPANY **Brito Oil Co., Inc.**  
LEASE **Cook #1-10**  
FIELD **Wildcat**  
LOCATION **1320 FNL & 330 FFL**  
SEC **10** TWP **6S** RGE **3W**  
COUNTY **Thomas** STATE **Kansas**  
CONTRACTOR **Murfin Drilling #24**  
SPUD **09/30/17** COMP **10/08/17**  
RTD **4800'** TYPE MUD **Chemical**  
MUD UP **3300'**

SAMPLES SAVED FROM **3700'** TO RTD  
DRILLING TIME KEPT FROM **3650'** TO RTD  
SAMPLES EXAMINED FROM **3700'** TO RTD  
GEOLOGICAL SUPERVISION FROM **3500'**  
REFERENCE WELL **Norbia Oil Co. - Lacy #1**

ELEVATIONS  
KB **3263'**  
DF \_\_\_\_\_  
GL **3258'**  
Measurements Are All From Kelly Bushing  
CASING  
CONDUCTOR \_\_\_\_\_  
SURFACE **8-5/8"** at **344'**  
PRODUCTION **5-1/2"** at **794'**

ELECTRICAL  
S/N/D: D.L., M.F.L.  
CND: D.L., M.F.L.  
F/10/20/27

Formation	Sample Tops	E-log Tops	Strat Pos.
Base Amphibole	2927 (+341)	2921 (+342)	-4
Tarkio	3790 (-527)	3790 (-527)	-6
Hessner	4093 (-830)	4090 (-827)	-7
Lansing	4122 (-879)	4128 (-875)	-8
Muncie Creek	4258 (-993)	4257 (-994)	-9
BKC	4386 (-1123)	4386 (-1123)	+10
Pawnee	4308 (-1245)	4305 (-1240)	+16
FT SCSO	4368 (-1305)	4365 (-1300)	+23
Mississippi	4747 (-1484)	4746 (-1483)	+22



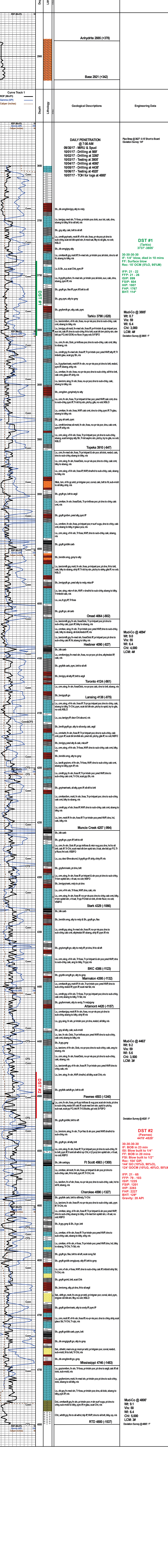
REMARKS Due to poor to fair shows of oil in multiple potential pay zones and positive DST results, it is recommended and agreed upon by all parties that production casing be set to further evaluate this well.

Respectfully Submitted,

API #15-193-21001

Saman Sharifaie  
Petroleum Geologist

\*Tops have been adjusted to electric logs



Section	Depth (Feet)	Geological Descriptions	Engineering Data
Anhydrite 2885 (+378)	2885		
	2921		
Base 2921 (+342)	2921		
	3790		
DAILY PENETRATION @ 7:00 AM	3790		
	4800		
Tarkio 3790 (-528)	3790		
	4090		
Oread 4064 (-802)	4064		
	4100		
Heebner 4090 (-827)	4090		
	4100		
Toronto 4124 (-861)	4124		
	4150		
Lansing 4138 (-875)	4138		
	4200		
Muncie Creek 4257 (-994)	4257		
	4300		
Stark 4329 (-1066)	4329		
	4350		
BKC 4386 (-1123)	4386		
	4400		
Marmaton 4395 (-1132)	4395		
	4400		
Altamont 4420 (-1157)	4420		
	4450		
Pawnee 4503 (-1240)	4503		
	4550		
Ft Scott 4563 (-1300)	4563		
	4600		
Cherokee 4590 (-1327)	4590		
	4650		
Mississippi 4746 (-1483)	4746		
	4800		

30-30-30-30 IF: 1/4" Blow, died in 10 mins  
 FF: Surface blow  
 Rec: 15' OCM (5%O, 95%M)

IFP: 21 - 22  
 FFP: 21 - 26  
 ISIP: 895  
 FSI: 604  
 IHP: 1807  
 FHP: 1767  
 BHT: 114°

Mud-Co @ 3805'  
 Wt: 8.7  
 Vis: 59  
 Chl: 3,000  
 LCM: 4#  
 Deviation Survey @ 3805: 1°

Mud-Co @ 4094'  
 Wt: 8.5  
 Vis: 65  
 Chl: 4,000  
 LCM: 4#

Mud-Co @ 4463'  
 Wt: 9.2  
 Vis: 59  
 Wt: 5.6  
 Chl: 3,500  
 LCM: 3#

30-30-30-30 IF: BOB in 23 min  
 IS: Blow built to 1/4"  
 FF: BOB in 20 mins  
 FS: Blow built to 1/2"  
 Rec: 104' GIP,  
 144' GO (10%G, 90%O),  
 124' GOCM (10%G, 40%O, 50%M)

IFP: 21 - 65  
 FFP: 79 - 103  
 ISIP: 1225  
 FSI: 1201  
 IHP: 2283  
 FHP: 2227  
 BHT: 129°  
 Gravity: 28 API

Mud-Co @ 4800'  
 Wt: 9.1  
 Vis: 68  
 Chl: 5,000  
 LCM: 3#  
 Deviation Survey @ 4800: 1°