



PETERA ENERGY SERVICES
CONSULTING FROM SURFACE TO DEPTH

Scale 1:240 (5"-100") Imperial
Measured Depth Log

Well Name: National Loan 4-1
API: 15-051-26886
Location: SW SE NE SW of Section (1) 12s 16w
License Number: 5205
Spud Date: 8/21/2017
Surface Coordinates: Longitude (NAD27): -99.0489759
Latitude (NAD27): 39.0343752
Bottom Hole Coordinates: Ground Elevation (ft): 1821' K.B. Elevation (ft): 1826'
Logged Interval (ft): 2500' To: 3479' Total Depth (ft): 3479'
Formation: Arbuckle Dolomite @ Total Depth
Type of Drilling Fluid: Chemical Drispac (Mudco)

OPERATOR

Company: Mid-Continent Energy Corp.
Address: 100 S. Broadway Suite 360
Wichita, KS 67202-4280

GEOLOGIST

Name: Eli J. Felts
Company: Petera Energy Services, LLC
Address: 7701 E. Kellogg Drive Suite #625
Wichita, KS 67202
(316) 204-5059

REFERENCE WELLS E-LOG TOPS

Table with 10 columns: Well Name, Depth (ft), Lithology, and other well data. Includes wells like Anhydrite Top, Anhydrite Base, Topkapi, Heabner, Lansing, Stark, Marmaton, Arbuckle, and RTD.

DRILL STEM TEST REPORT

Drill Stem Test Report for National Loan #4-1, 1-12S-16W Ellis, KS. Includes general information, test comment, pressure summary, and recovery data.

DRILL STEM TEST REPORT

Drill Stem Test Report for National Loan #4-1, 1-12S-16W Ellis, KS. Includes general information, test comment, pressure summary, and recovery data.

DRILL STEM TEST REPORT

Drill Stem Test Report for National Loan #4-1, 1-12S-16W Ellis, KS. Includes general information, test comment, pressure summary, and recovery data.

DRILL STEM TEST REPORT

Drill Stem Test Report for National Loan #4-1, 1-12S-16W Ellis, KS. Includes general information, test comment, pressure summary, and recovery data.

DRILL STEM TEST REPORT

Drill Stem Test Report for National Loan #4-1, 1-12S-16W Ellis, KS. Includes general information, test comment, pressure summary, and recovery data.

DRILL STEM TEST REPORT

Drill Stem Test Report for National Loan #4-1, 1-12S-16W Ellis, KS. Includes general information, test comment, pressure summary, and recovery data.

DRILL STEM TEST REPORT

Drill Stem Test Report for National Loan #4-1, 1-12S-16W Ellis, KS. Includes general information, test comment, pressure summary, and recovery data.

DRILL STEM TEST REPORT

Drill Stem Test Report for National Loan #4-1, 1-12S-16W Ellis, KS. Includes general information, test comment, pressure summary, and recovery data.

DRILL STEM TEST REPORT

Drill Stem Test Report for National Loan #4-1, 1-12S-16W Ellis, KS. Includes general information, test comment, pressure summary, and recovery data.

DSTs

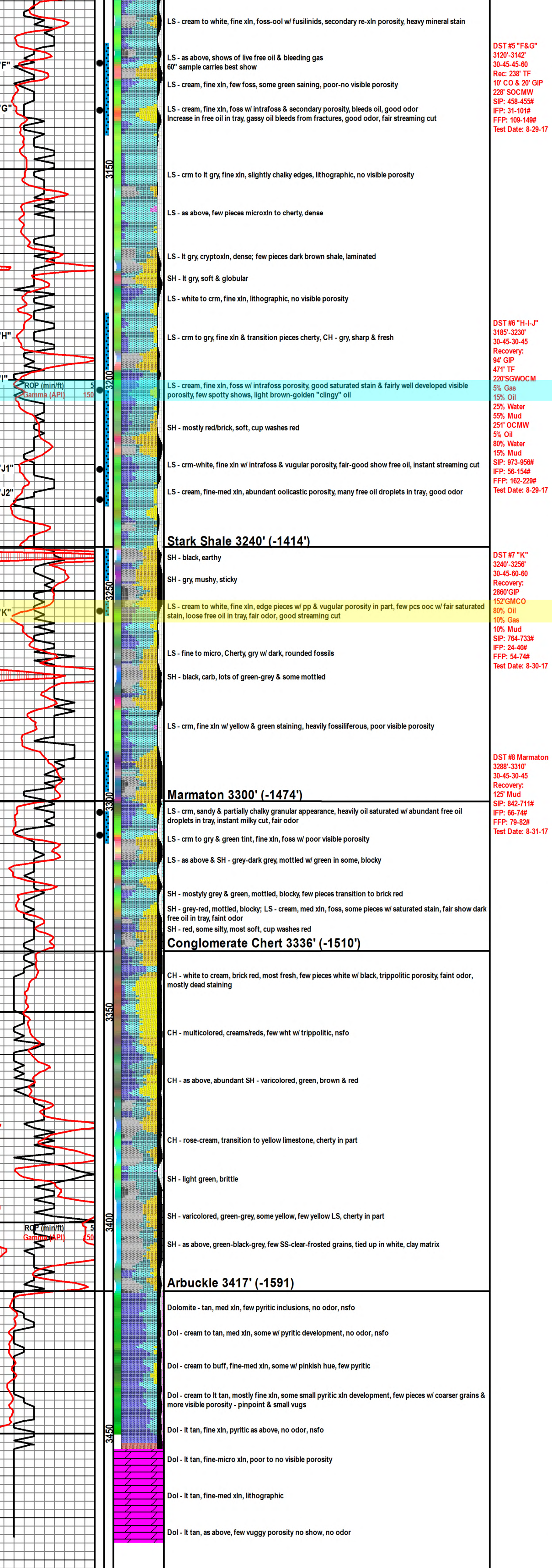
Table with 6 columns: NO, INTERVAL, OPEN, SHUT, OPEN, SHUT, RECOVERY. Lists 8 different DST intervals and their results.

Remarks

Due the positive results of DSTs & an favorable log calculations, it was decided by all parties involved to further test the well through casing. An oil string of 5.5" 17# casing was set in the Arbuckle.

Best Regards,
Eli J. Felts

Surface Casing Furnished by: Smith Supply. Ran 24 joints of 2 3/8 8 5/8" Tally 978 7/8" set @ 965'
Remarks: Strap & weld surface with Leons welding. Anhydrite @ 974'-890' Displaced @ 2500' (600BBL). Short rig @ 2788' (20 stands) 1.25 hrs. Pipe strap 1.43 short, Start-up @ 3054' (20 stands) 1.25 hrs. Pipe strap @ 3099'. 44 short. Logged by TLT (TD 3479') 2.75 hrs. Change over to run casing.



Sample tops have been corrected to E-Log tops in this report for future correlation. Note RTD was 4' short to LTD.