

Terry McLeod

Consulting Geologist
 P.O. Box 503
 Wichita, Kansas 67201
 316-640-2440

GEOLOGIST'S REPORT DRILLING TIME AND SAMPLE LOG

OPERATOR Bessler Well Service
 LEASE Schmidt-Friesen WELL NO. 30-1
 FIELD Hollow Nickel
 LOCATION N/2 NW/4 NE/4
 SEC. 30 TWP. 22S RGE. 3W
 COUNTY Harvey STATE Kansas

CONTRACTOR C+G Drilling Co. Rig # 1
 COMM. 11/20/2017 COMP. 11/29/2017
 RIG 2616 LOG TD 2610'
 SAMPLES SAVED FROM 2206 TO RTD
 DRILLING TIME KEPT FROM 2206 TO RTD
 SAMPLES EXAMINED FROM 2206 TO RTD
 GEOLOGICAL SUPERVISION FROM 2235 TO RTD
 MUD UP 2206' TYPE MUD chemical

FORMATION	TOP	LOG DATUM	SAMPLE TOP DATUM	STRUCT. COMP.
Brown lime	2429	-975	2437-983	44
Lansing "C"	2467	-1013	2475-1021	42
Lansing "C"	2502	-1048	2510-1056	43

ELEVATION
 KB 1454
 DF 1448'
 Measurements Are All From K.B.

CASING RECORD
 SURFACE 13 3/8 @ 300'
 PRODUCTION 5 1/2"

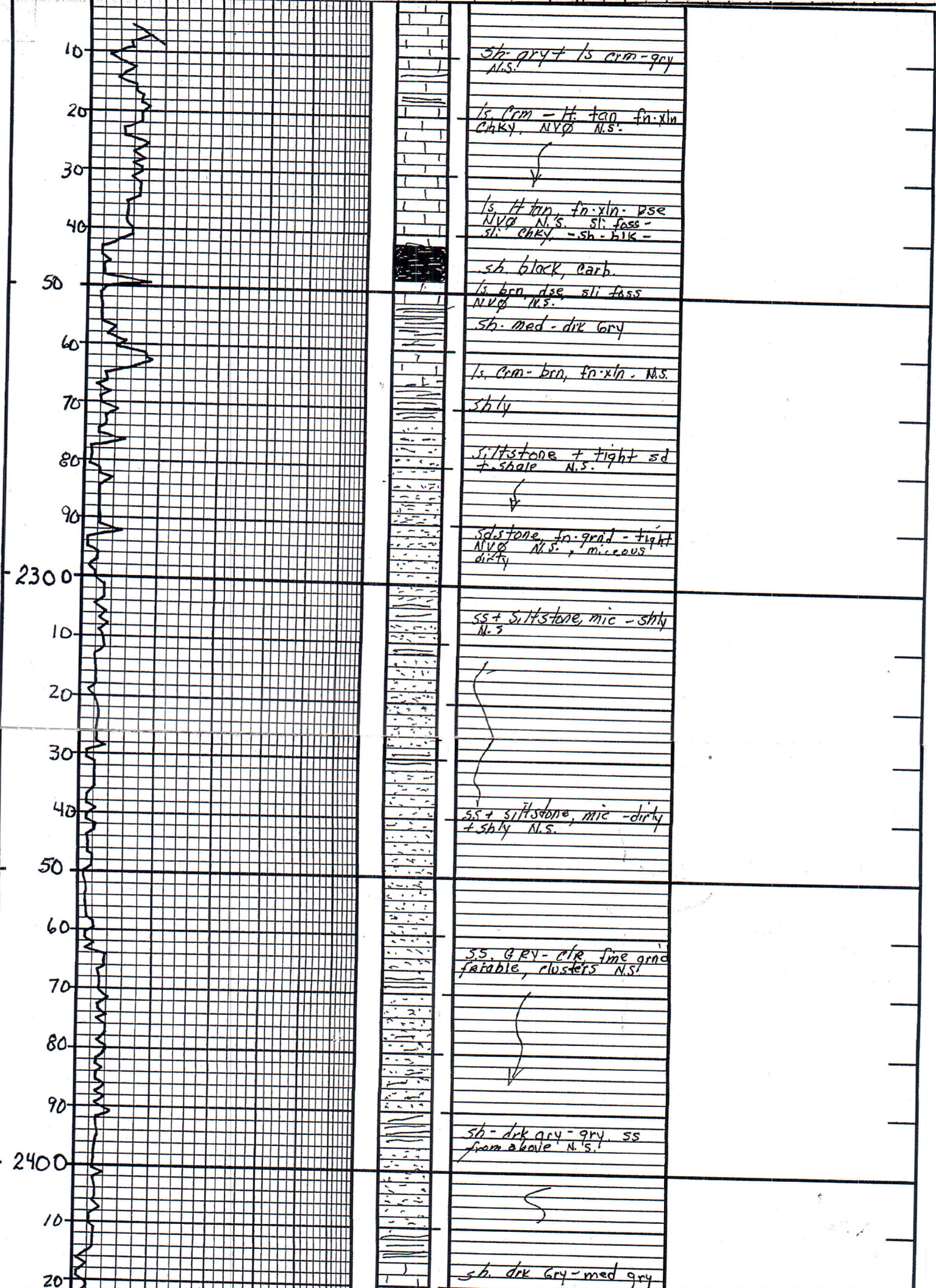
ELECTRICAL SURVEYS
 Pioneer Energy Services
 Density/Neutron
 Dual Induction

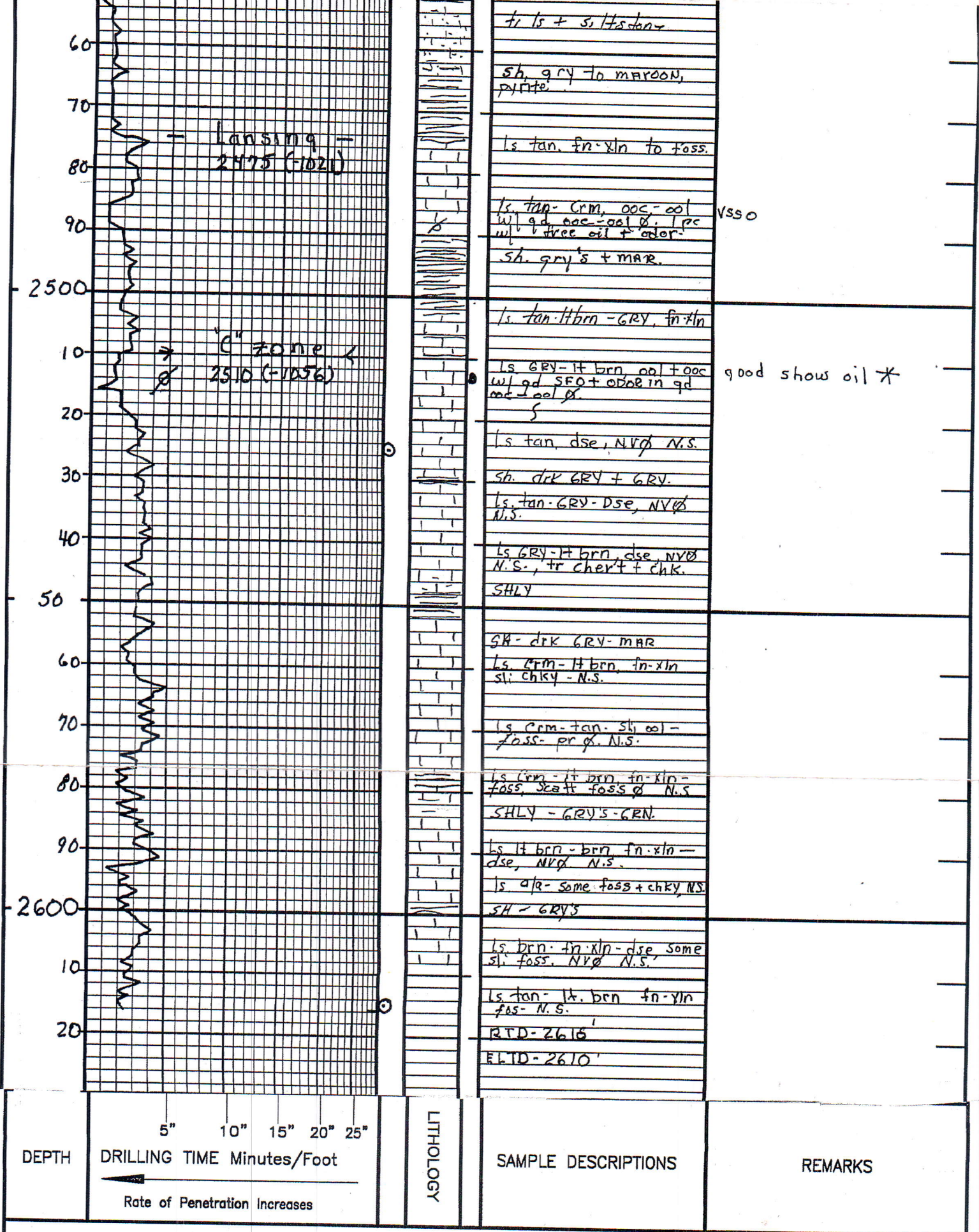


REFERENCE WELL FOR STRUCTURAL COMPARISON Kantor Oil Co. Wardens 1B
C 300 Sec. Sec 19 - 22S - 3W, Harvey Co. KS 1459 KCB

DATE	DEPTH	NO	SIZE	MAKE	TYPE
11/20/17	mirt	1	1 7/8		R/R
11/21/17	300' shot down	2	7/8		PDC
11/26/17	300'	3	7/8	51159	
11/27/17	807' drlg				
11/28/17	2206' drlg				
11/29/17	2616' RTD-Elog				
	Run pipe				

FORMATION	INTERVAL	DESCRIPTION OF SHOW
Lansing "C"	2510-16	Limestone, grey to light brown, and oolitic, w/ good show of f. f good odor w/ good sp. sat. in
		log measurements higher than drillers (6-8')





COMPANY Ressler Well Service
 LEASE Schmidt - Friesen 30-1
 LOCATION N/2 NW/4 NE/4 SEC. 30 TWP 22S RNG. 3W

ELEVATION: 1454 K.B.