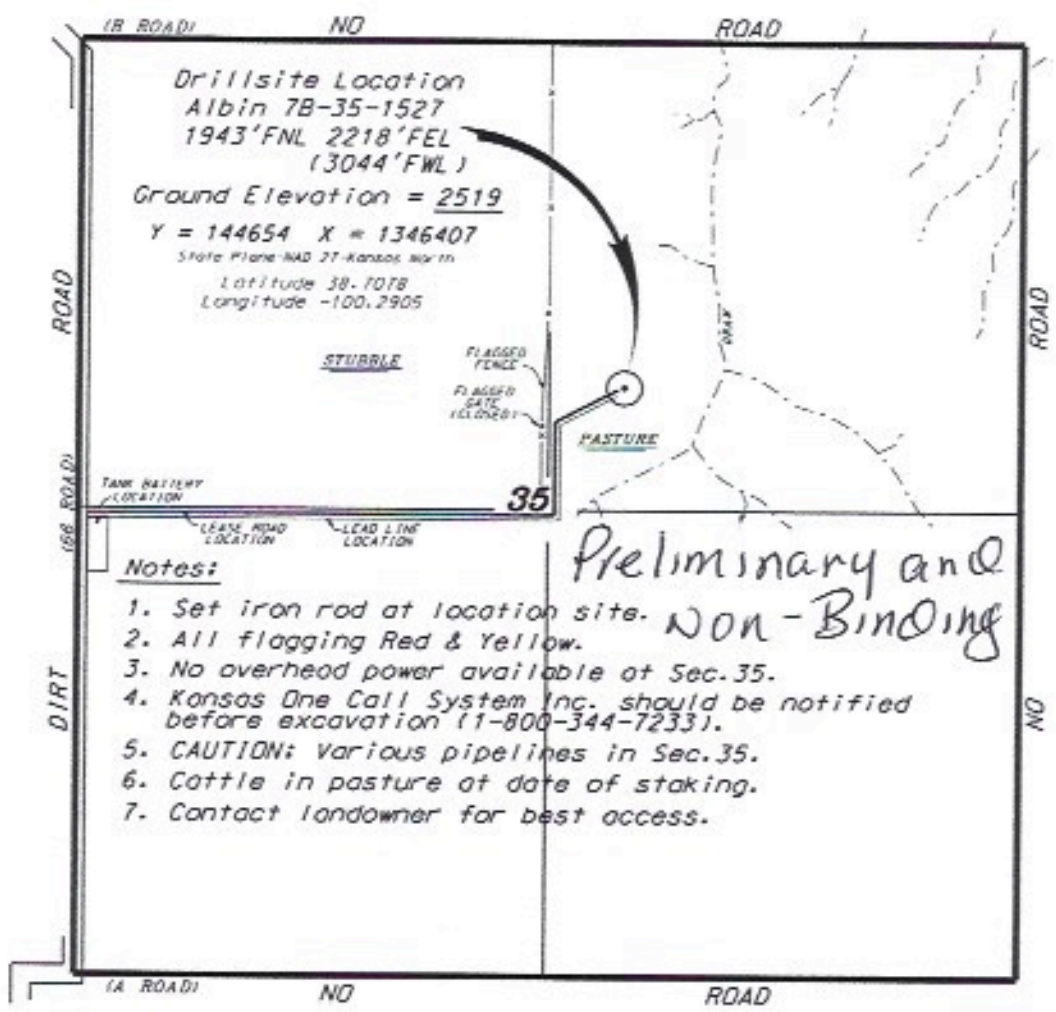


US OIL RESOURCES, LLC
ALBIN LEASE
NE. 1/4, SECTION 35, T15S, R27W
GOVE COUNTY, KANSAS

*Ingress and egress to location as shown on this plan is per usage only and may not be legally opened for public use. Contact landowner, tenant and county road department for access.



* Drilling site is based upon the best data and photographs available to us and upon a regular section of land comprising 640 acres.
 * Acreage section lines were determined using the normal standards of care of oilfield surveyors practicing in the state of Kansas. The section corners, which establish the precise section lines, are not necessarily located, and the exact location of the drilling location in the section is not guaranteed. Therefore, the location accuracy of this service and any other services relying thereon shall be based on the best available data and any other services provided by third parties. US Oil Resources, LLC, its officers and employees shall not be liable for any damages, costs and expenses and shall not be liable for any liability from inclusion or omission of any data.
 * Elevations derived from spirit-level geodetic vertical datum.

Date December 28, 2017

CENTRAL KANSAS OILFIELD SERVICES, INC. (620)792-1977