



## DRILL STEM TEST REPORT

Prepared For: **American Warrior Inc.**

PO Box 399  
Garden City, KS 67846

ATTN: Luke Thompson

### **Schuette #6-36**

#### **36-31S-16W Comanche,KS**

Start Date: 2017.10.31 @ 15:27:00

End Date: 2017.10.31 @ 22:57:02

Job Ticket #: 62078                      DST #: 1

Trilobite Testing, Inc

PO Box 362 Hays, KS 67601

ph: 785-625-4778 fax: 785-625-5620

Printed: 2017.11.08 @ 15:24:41



**TRILOBITE TESTING, INC.**

# DRILL STEM TEST REPORT

American Warrior Inc.  
 PO Box 399  
 Garden City, KS 67846  
 ATTN: Luke Thompson

**36-31S-16W Comanche,KS**  
**Schuette #6-36**  
 Job Ticket: 62078 **DST#: 1**  
 Test Start: 2017.10.31 @ 15:27:00

## GENERAL INFORMATION:

Formation: **Tonganoxie**  
 Deviated: No Whipstock: ft (KB)  
 Time Tool Opened: 17:30:32  
 Time Test Ended: 22:57:02  
 Interval: **4232.00 ft (KB) To 4250.00 ft (KB) (TVD)**  
 Total Depth: 4250.00 ft (KB) (TVD)  
 Hole Diameter: 7.88 inches Hole Condition: Fair  
 Test Type: Conventional Bottom Hole (Initial)  
 Tester: Ken Swinney  
 Unit No: 72  
 Reference Elevations: 1947.00 ft (KB)  
 1935.00 ft (CF)  
 KB to GR/CF: 12.00 ft

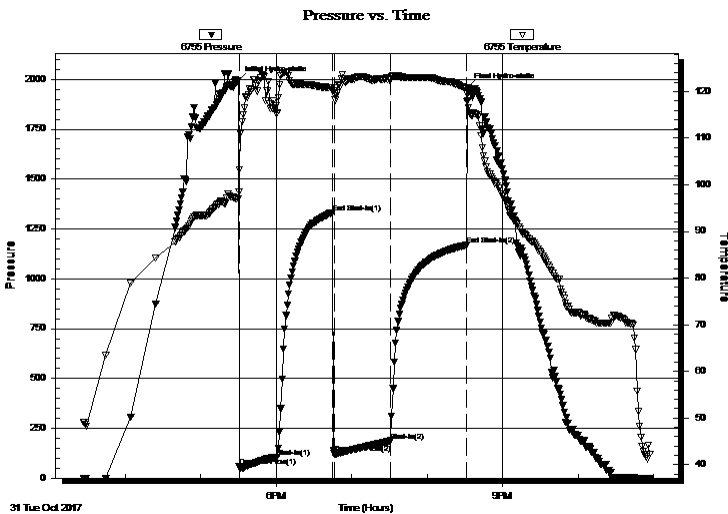
## Serial #: 6755

Inside

Press@RunDepth: 184.93 psig @ 4246.00 ft (KB) Capacity: psig  
 Start Date: 2017.10.31 End Date: 2017.10.31 Last Calib.: 2017.10.31  
 Start Time: 15:27:01 End Time: 22:57:02 Time On Btm: 2017.10.31 @ 17:30:02  
 Time Off Btm: 2017.10.31 @ 20:32:17

TEST COMMENT: IFP 30 Minutes Blow built to BOB in 8 minutes  
 ISI 45 Minutes Blow back built to 6"  
 FFP 45 Minutes Blow built to BOB in 5 minutes  
 FSI 60 Minutes Blow back built to BOB in 5 minutes

## PRESSURE SUMMARY



Time (Min.)	Pressure (psig)	Temp (deg F)	Annotation
0	1991.38	97.03	Initial Hydro-static
1	60.95	98.50	Open To Flow (1)
31	105.89	115.24	Shut-In(1)
75	1331.76	120.80	End Shut-In(1)
76	122.86	119.43	Open To Flow (2)
121	184.93	122.65	Shut-In(2)
181	1167.50	120.69	End Shut-In(2)
183	1956.56	118.06	Final Hydro-static

## Recovery

Length (ft)	Description	Volume (bbl)
62.00	GMCEOW Mud 5% Gas10% EOil 10% W	0.8775%
62.00	GEOCM Gas 5% Emuls Oil 25% Mud 75%	0.87
310.00	GMMVCEO Gas20% Mud 20% Water 30%	4.35 30%
0.00	2728' GIP	0.00

## Gas Rates

Choke (inches)	Pressure (psig)	Gas Rate (Mcf/d)



**TRILOBITE TESTING, INC.**

# DRILL STEM TEST REPORT

American Warrior Inc.  
 PO Box 399  
 Garden City, KS 67846  
 ATTN: Luke Thompson

**36-31S-16W Comanche,KS**  
**Schuette #6-36**  
 Job Ticket: 62078 **DST#: 1**  
 Test Start: 2017.10.31 @ 15:27:00

## GENERAL INFORMATION:

Formation: **Tonganoxie**  
 Deviated: No Whipstock: ft (KB)  
 Time Tool Opened: 17:30:32  
 Time Test Ended: 22:57:02  
 Interval: **4232.00 ft (KB) To 4250.00 ft (KB) (TVD)**  
 Total Depth: 4250.00 ft (KB) (TVD)  
 Hole Diameter: 7.88 inches Hole Condition: Fair  
 Test Type: Conventional Bottom Hole (Initial)  
 Tester: Ken Swinney  
 Unit No: 72  
 Reference Elevations: 1947.00 ft (KB)  
 1935.00 ft (CF)  
 KB to GR/CF: 12.00 ft

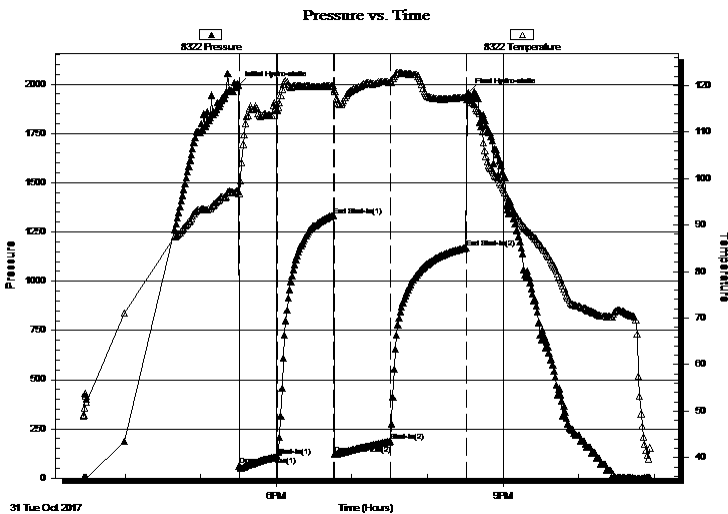
## Serial #: 8322

**Outside**

Press@RunDepth: 1169.38 psig @ 4247.00 ft (KB) Capacity: psig  
 Start Date: 2017.10.31 End Date: 2017.10.31 Last Calib.: 2017.10.31  
 Start Time: 15:27:01 End Time: 22:57:02 Time On Btm: 2017.10.31 @ 17:29:47  
 Time Off Btm: 2017.10.31 @ 20:32:17

TEST COMMENT: IFP 30 Minutes Blow built to BOB in 8 minutes  
 ISI 45 Minutes Blow back built to 6"  
 FFP 45 Minutes Blow built to BOB in 5 minutes  
 FSI 60 Minutes Blow back built to BOB in 5 minutes

## PRESSURE SUMMARY



Time (Min.)	Pressure (psig)	Temp (deg F)	Annotation
0	1993.33	97.23	Initial Hydro-static
1	63.08	96.81	Open To Flow (1)
32	109.97	114.83	Shut-In(1)
76	1334.06	119.92	End Shut-In(1)
77	122.62	119.12	Open To Flow (2)
121	186.65	120.75	Shut-In(2)
181	1169.38	117.44	End Shut-In(2)
183	1956.57	117.60	Final Hydro-static

## Recovery

Length (ft)	Description	Volume (bbl)
62.00	GMCEOW Mud 5% Gas10% EOil 10%	0.8775%
62.00	GEOCM Gas 5% Emuls Oil 25% Mud 75%	0.87
310.00	GMMVCEO Gas20% Mud 20% Water 30%	4.35 30%
0.00	2728' GIP	0.00

## Gas Rates

Choke (inches)	Pressure (psig)	Gas Rate (Mcf/d)



**TRILOBITE  
TESTING, INC.**

# DRILL STEM TEST REPORT

**TOOL DIAGRAM**

American Warrior Inc.

**36-31S-16W Comanche,KS**

PO Box 399  
Garden City, KS 67846

**Schuette #6-36**

Job Ticket: 62078

**DST#: 1**

ATTN: Luke Thompson

Test Start: 2017.10.31 @ 15:27:00

## Tool Information

Drill Pipe:	Length: 4221.00 ft	Diameter: 3.80 inches	Volume: 59.21 bbl	Tool Weight:	2000.00 lb
Heavy Wt. Pipe:	Length: 0.00 ft	Diameter: 0.00 inches	Volume: 0.00 bbl	Weight set on Packer:	20000.00 lb
Drill Collar:	Length: 0.00 ft	Diameter: 0.00 inches	Volume: 0.00 bbl	Weight to Pull Loose:	74000.00 lb
			<u>Total Volume: 59.21 bbl</u>	Tool Chased	0.00 ft
Drill Pipe Above KB:	16.00 ft			String Weight: Initial	69000.00 lb
Depth to Top Packer:	4232.00 ft			Final	68000.00 lb
Depth to Bottom Packer:	ft				
Interval between Packers:	18.00 ft				
Tool Length:	45.00 ft				
Number of Packers:	2	Diameter: 6.75 inches			
Tool Comments:					

Tool Description	Length (ft)	Serial No.	Position	Depth (ft)	Accum. Lengths
------------------	-------------	------------	----------	------------	----------------

Shut-In Tool	5.00			4210.00	
Hydraulic tool	5.00			4215.00	
Jars	5.00			4220.00	
Safety Joint	2.00			4222.00	
Packer - Shale	5.00			4227.00	
Packer	5.00			4232.00	27.00 Bottom Of Top Packer
Anchor	13.00			4245.00	
Recorder	1.00	6755	Inside	4246.00	
Recorder	1.00	8322	Outside	4247.00	
Bullnose	3.00			4250.00	18.00 Anchor Tool
<b>Total Tool Length:</b>	<b>45.00</b>				



**TRILOBITE  
TESTING, INC.**

# DRILL STEM TEST REPORT

**FLUID SUMMARY**

American Warrior Inc.

**36-31S-16W Comanche,KS**

PO Box 399  
Garden City, KS 67846

**Schuette #6-36**

Job Ticket: 62078

**DST#: 1**

ATTN: Luke Thompson

Test Start: 2017.10.31 @ 15:27:00

## Mud and Cushion Information

Mud Type: Gel Chem

Cushion Type:

Oil API:

deg API

Mud Weight: 9.00 lb/gal

Cushion Length:

ft

Water Salinity:

27000 ppm

Viscosity: 48.00 sec/qt

Cushion Volume:

bbbl

Water Loss: 8.76 in<sup>3</sup>

Gas Cushion Type:

Resistivity: ohm.m

Gas Cushion Pressure:

psig

Salinity: 4000.00 ppm

Filter Cake: 1.00 inches

## Recovery Information

Recovery Table

Length ft	Description	Volume bbl
62.00	GMCEOW Mud 5% Gas10% EOil 10% Water	0.870
62.00	GEOCM Gas 5% Emuls Oil 25% Mud 75%	0.870
310.00	GMWCEO Gas20% Mud 20% Water 30% EOil	4.348
0.00	2728' GIP	0.000

Total Length: 434.00 ft

Total Volume: 6.088 bbl

Num Fluid Samples: 0

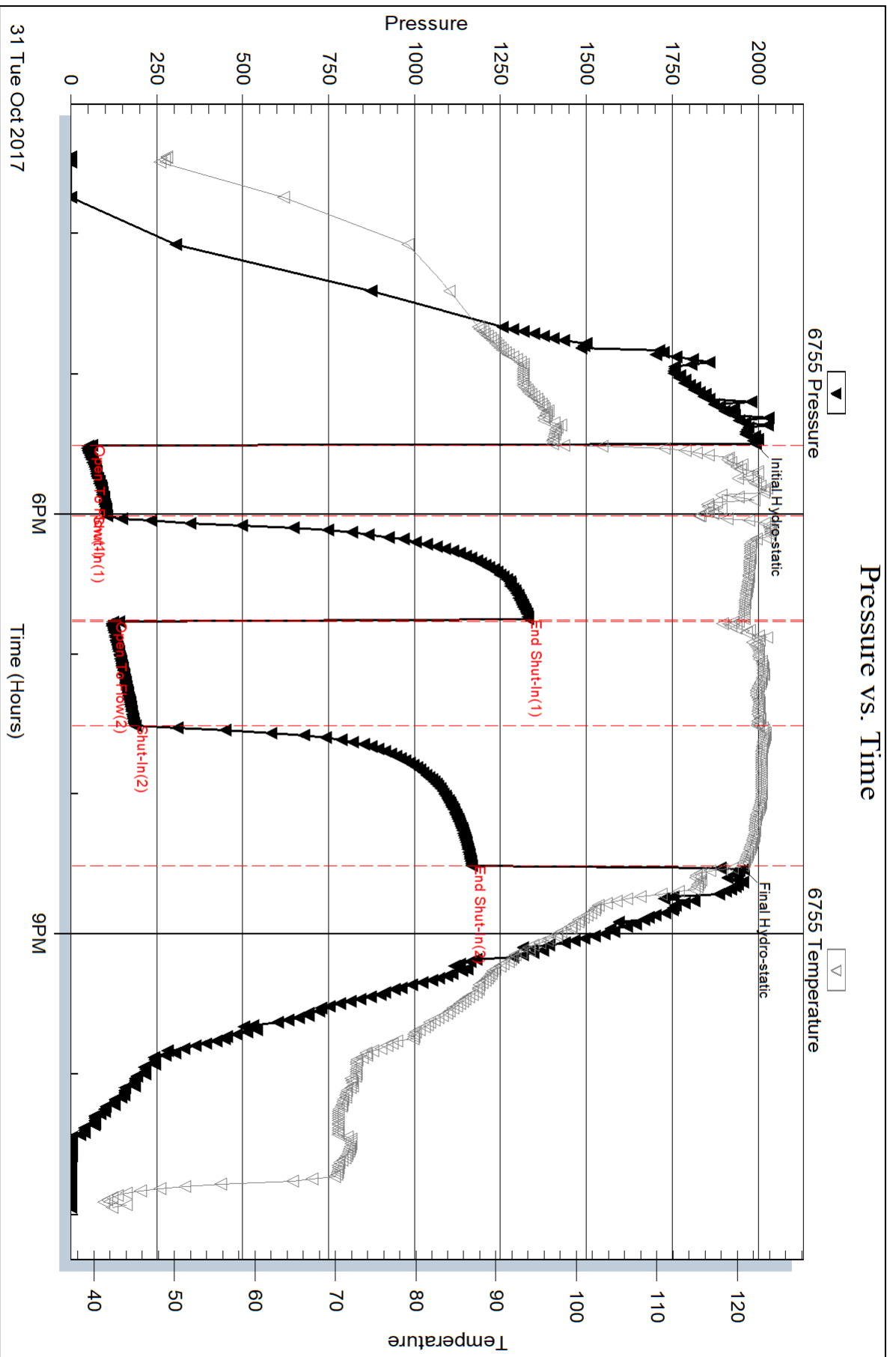
Num Gas Bombs: 0

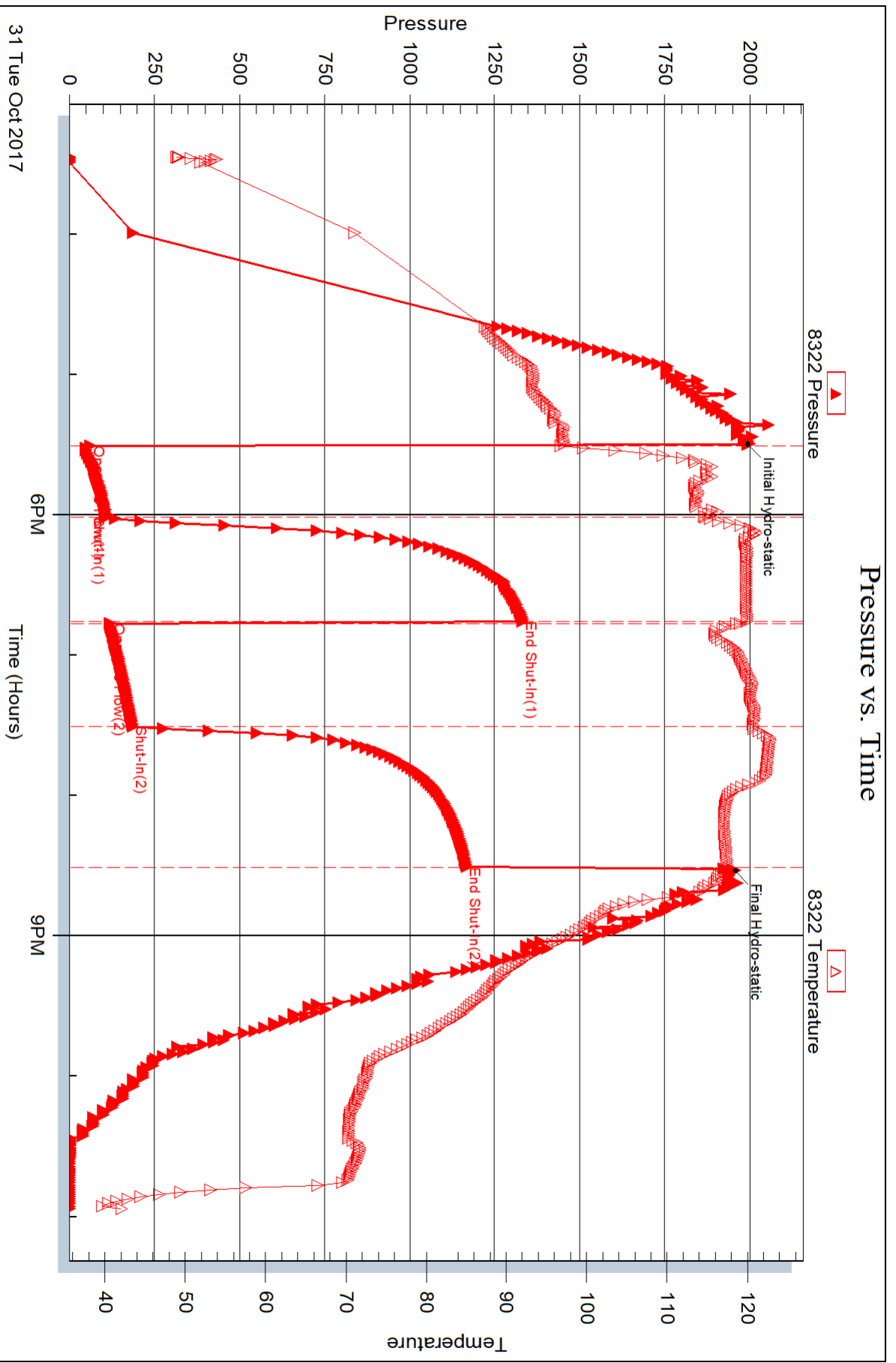
Serial #:

Laboratory Name:

Laboratory Location:

Recovery Comments: Recovery Resistivity .5 ohms @ 40 deg.







## DRILL STEM TEST REPORT

Prepared For: **American Warrior Inc.**

PO Box 399  
Garden City, KS 67846

ATTN: Luke Thompson

### **Schuette #6-36**

#### **36-31S-16W Comanche,KS**

Start Date: 2017.11.02 @ 13:39:00

End Date: 2017.11.02 @ 20:15:02

Job Ticket #: 62079                      DST #: 2

Trilobite Testing, Inc

PO Box 362 Hays, KS 67601

ph: 785-625-4778 fax: 785-625-5620

Printed: 2017.11.08 @ 15:24:10





**TRILOBITE TESTING, INC.**

# DRILL STEM TEST REPORT

American Warrior Inc.  
 PO Box 399  
 Garden City, KS 67846  
 ATTN: Luke Thompson

**36-31S-16W Comanche,KS**  
**Schuette #6-36**  
 Job Ticket: 62079 **DST#: 2**  
 Test Start: 2017.11.02 @ 13:39:00

## GENERAL INFORMATION:

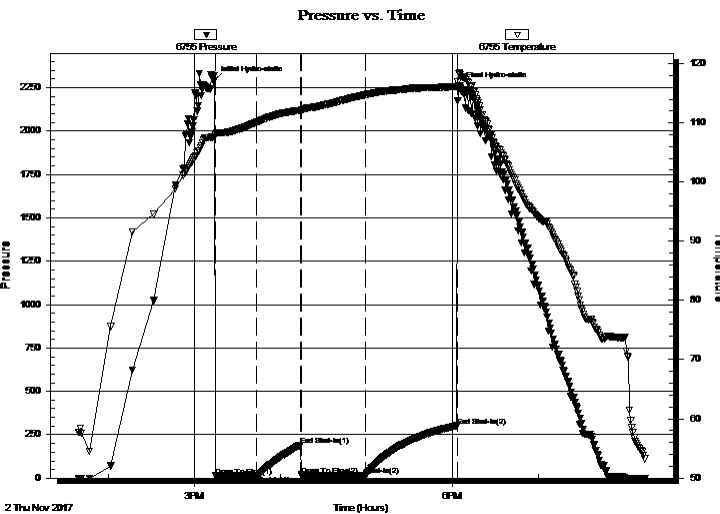
Formation: **Marmaton**  
 Deviated: No Whipstock: ft (KB)  
 Test Type: Conventional Bottom Hole (Initial)  
 Time Tool Opened: 15:14:32 Tester: Ken Swinney  
 Time Test Ended: 20:15:02 Unit No: 72  
 Interval: **4710.00 ft (KB) To 4755.00 ft (KB) (TVD)** Reference Elevations: 1947.00 ft (KB)  
 Total Depth: 4755.00 ft (KB) (TVD) 1935.00 ft (CF)  
 Hole Diameter: 7.88 inches Hole Condition: Fair KB to GR/CF: 12.00 ft

## Serial #: 6755

Inside

Press@RunDepth: 17.74 psig @ 4751.00 ft (KB) Capacity: psig  
 Start Date: 2017.11.02 End Date: 2017.11.02 Last Calib.: 2017.11.02  
 Start Time: 13:39:01 End Time: 20:15:02 Time On Btm: 2017.11.02 @ 15:13:32  
 Time Off Btm: 2017.11.02 @ 18:05:02

TEST COMMENT: IFP 30 Minutes Blow built to 6"  
 ISI 30 Minutes No blow back  
 FFP 45 Minutes Blow built to BOB in 19 minutes  
 FSI 60 Mintues No blow back



## PRESSURE SUMMARY

Time (Min.)	Pressure (psig)	Temp (deg F)	Annotation
0	2291.30	107.63	Initial Hydro-static
1	13.52	107.90	Open To Flow (1)
30	17.26	110.10	Shut-In(1)
61	190.58	112.11	End Shut-In(1)
62	14.03	112.14	Open To Flow (2)
106	17.74	114.75	Shut-In(2)
170	301.96	116.15	End Shut-In(2)
172	2255.76	118.51	Final Hydro-static

## Recovery

Length (ft)	Description	Volume (bbl)
20.00	Mud with show of oil/ Mud 100%	0.28
0.00	400" GIP	0.00

## Gas Rates

Choke (inches)	Pressure (psig)	Gas Rate (Mcf/d)





**TRILOBITE  
TESTING, INC.**

# DRILL STEM TEST REPORT

**TOOL DIAGRAM**

American Warrior Inc.

**36-31S-16W Comanche,KS**

PO Box 399  
Garden City, KS 67846

**Schuette #6-36**

Job Ticket: 62079

**DST#: 2**

ATTN: Luke Thompson

Test Start: 2017.11.02 @ 13:39:00

## Tool Information

Drill Pipe:	Length: 4692.00 ft	Diameter: 3.80 inches	Volume: 65.82 bbl	Tool Weight: 2000.00 lb
Heavy Wt. Pipe:	Length: 0.00 ft	Diameter: 0.00 inches	Volume: 0.00 bbl	Weight set on Packer: 20000.00 lb
Drill Collar:	Length: 0.00 ft	Diameter: 0.00 inches	Volume: 0.00 bbl	Weight to Pull Loose: 80000.00 lb
			<u>Total Volume: 65.82 bbl</u>	Tool Chased 0.00 ft
Drill Pipe Above KB:	9.00 ft			String Weight: Initial 72000.00 lb
Depth to Top Packer:	4710.00 ft			Final 72000.00 lb
Depth to Bottom Packer:	ft			
Interval between Packers:	45.00 ft			
Tool Length:	72.00 ft			
Number of Packers:	2	Diameter: 6.75 inches		

Tool Comments:

Tool Description	Length (ft)	Serial No.	Position	Depth (ft)	Accum. Lengths
------------------	-------------	------------	----------	------------	----------------

Shut-In Tool	5.00			4688.00	
Hydraulic tool	5.00			4693.00	
Jars	5.00			4698.00	
Safety Joint	2.00			4700.00	
Packer - Shale	5.00			4705.00	
Packer	5.00			4710.00	27.00 Bottom Of Top Packer
Anchor	40.00			4750.00	
Recorder	1.00	6755	Inside	4751.00	
Recorder	1.00	8322	Outside	4752.00	
Bullnose	3.00			4755.00	45.00 Anchor Tool
<b>Total Tool Length:</b>	<b>72.00</b>				



**TRILOBITE  
TESTING, INC.**

# DRILL STEM TEST REPORT

**FLUID SUMMARY**

American Warrior Inc.

**36-31S-16W Comanche,KS**

PO Box 399  
Garden City, KS 67846

**Schuette #6-36**

Job Ticket: 62079

**DST#: 2**

ATTN: Luke Thompson

Test Start: 2017.11.02 @ 13:39:00

## Mud and Cushion Information

Mud Type: Gel Chem

Cushion Type:

Oil API:

deg API

Mud Weight: 9.00 lb/gal

Cushion Length:

ft

Water Salinity:

ppm

Viscosity: 46.00 sec/qt

Cushion Volume:

bbbl

Water Loss: 9.17 in<sup>3</sup>

Gas Cushion Type:

Resistivity: ohm.m

Gas Cushion Pressure:

psig

Salinity: 5000.00 ppm

Filter Cake: 1.00 inches

## Recovery Information

Recovery Table

Length ft	Description	Volume bbl
20.00	Mud with show of oil/ Mud 100%	0.281
0.00	400" GIP	0.000

Total Length: 20.00 ft      Total Volume: 0.281 bbl

Num Fluid Samples: 0

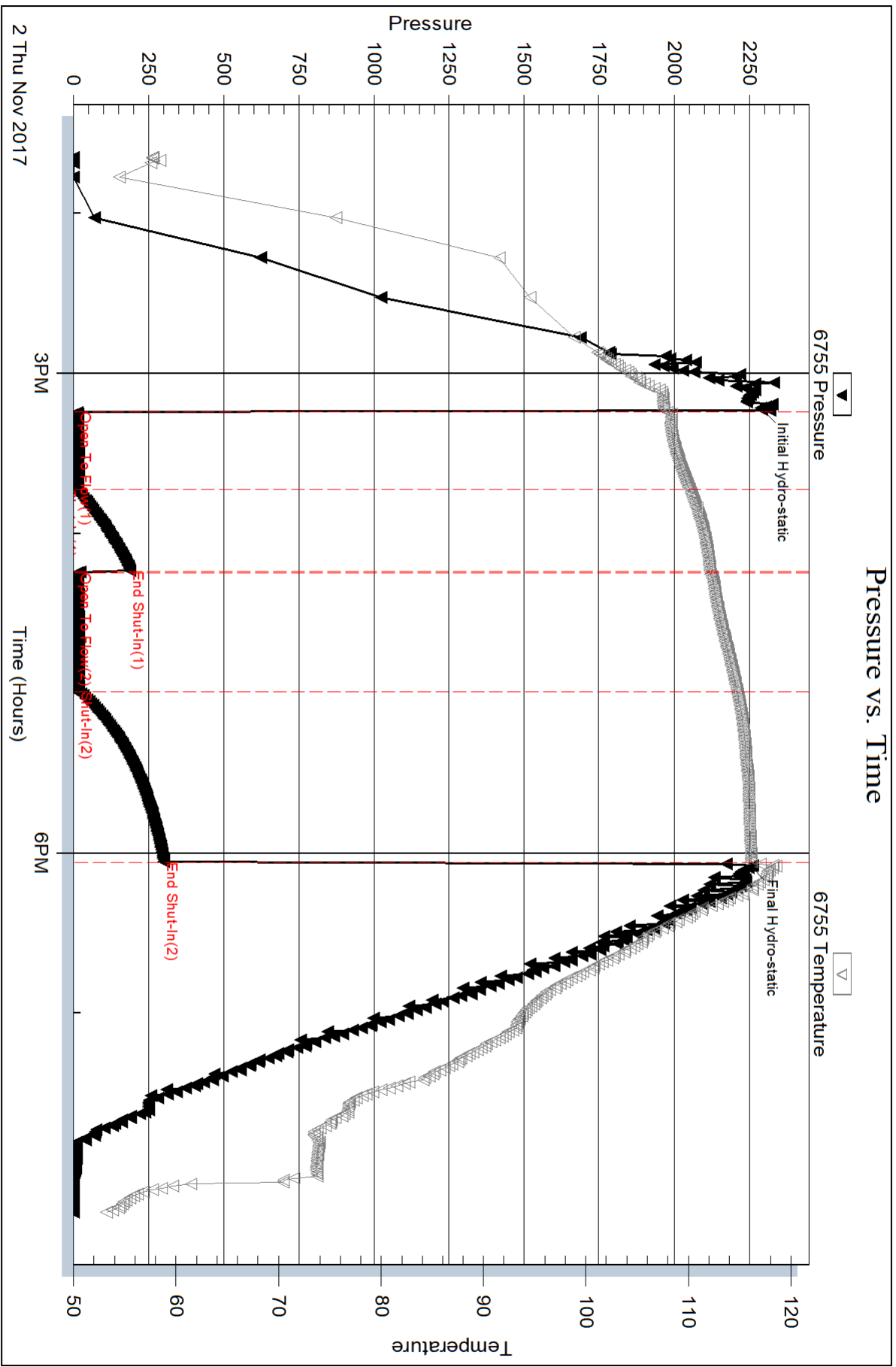
Num Gas Bombs: 0

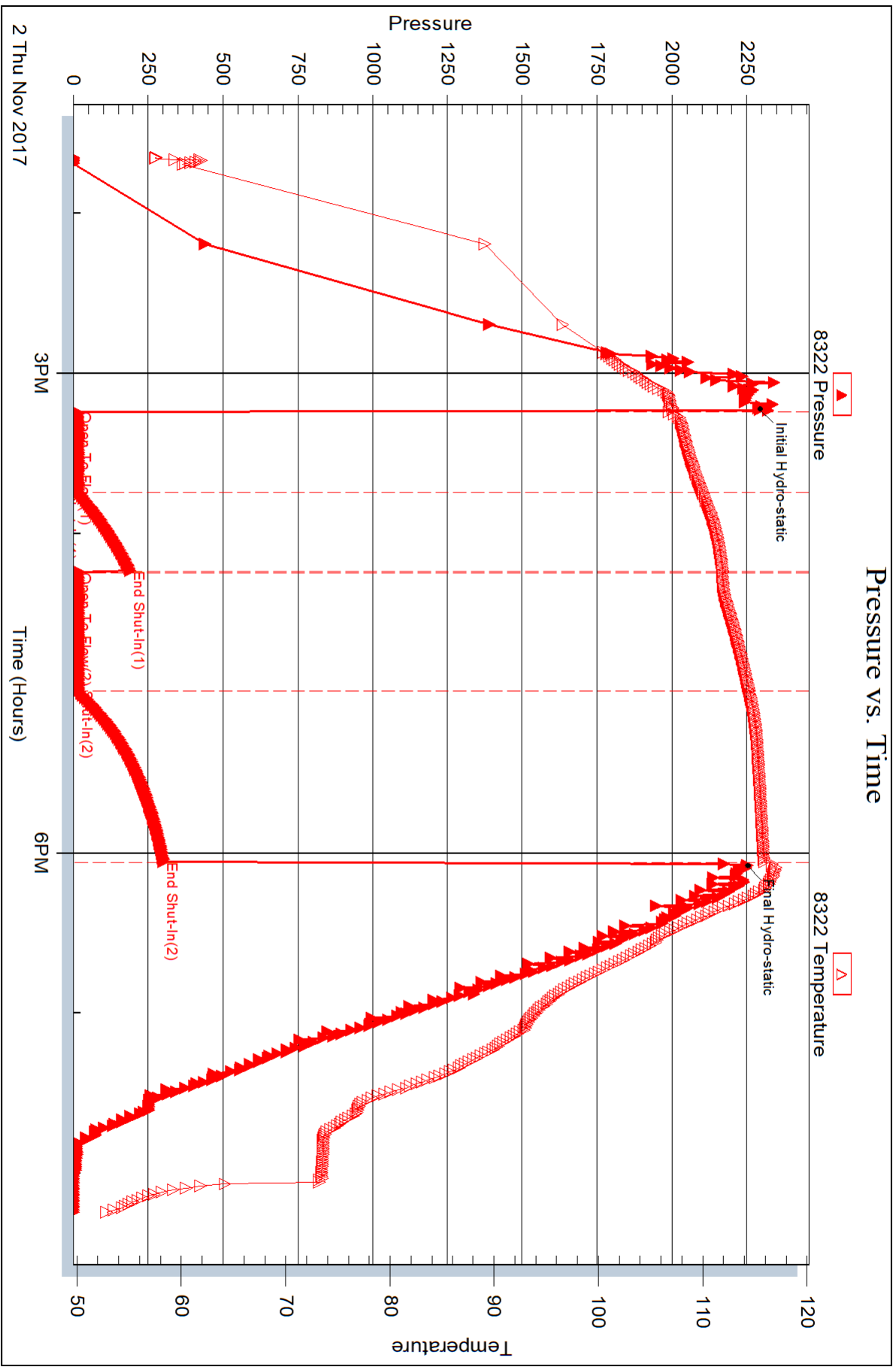
Serial #:

Laboratory Name:

Laboratory Location:

Recovery Comments:







## DRILL STEM TEST REPORT

Prepared For: **American Warrior Inc.**

PO Box 399  
Garden City, KS 67846

ATTN: Luke Thompson

### **Schuette #6-36**

#### **36-31S-16W Comanche,KS**

Start Date: 2017.11.03 @ 07:00:00

End Date: 2017.11.03 @ 13:22:02

Job Ticket #: 62080                      DST #: 3

Trilobite Testing, Inc

PO Box 362 Hays, KS 67601

ph: 785-625-4778 fax: 785-625-5620

Printed: 2017.11.08 @ 15:09:10



**TRILOBITE TESTING, INC.**

# DRILL STEM TEST REPORT

American Warrior Inc.  
 PO Box 399  
 Garden City, KS 67846  
 ATTN: Luke Thompson

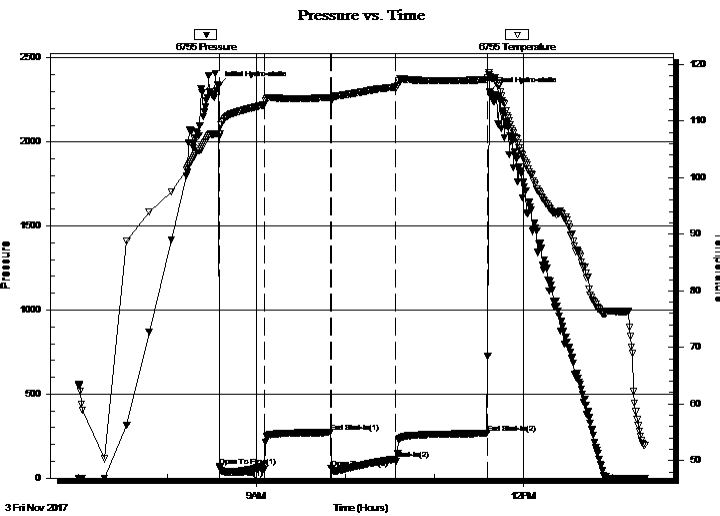
**36-31S-16W Comanche,KS**  
**Schuette #6-36**  
 Job Ticket: 62080 **DST#: 3**  
 Test Start: 2017.11.03 @ 07:00:00

## GENERAL INFORMATION:

Formation: **Pawnee**  
 Deviated: No Whipstock: ft (KB)  
 Time Tool Opened: 08:35:02  
 Time Test Ended: 13:22:02  
 Interval: **4744.00 ft (KB) To 4785.00 ft (KB) (TVD)**  
 Total Depth: 4785.00 ft (KB) (TVD)  
 Hole Diameter: 7.80 inches Hole Condition: Fair  
 Test Type: Conventional Bottom Hole (Initial)  
 Tester: Ken Swinney  
 Unit No: 72  
 Reference Elevations: 1947.00 ft (KB)  
 1935.00 ft (CF)  
 KB to GR/CF: 12.00 ft

**Serial #: 6755 Inside**  
 Press@RunDepth: 113.39 psig @ 4781.00 ft (KB) Capacity: psig  
 Start Date: 2017.11.03 End Date: 2017.11.03 Last Calib.: 2017.11.03  
 Start Time: 07:00:01 End Time: 13:22:02 Time On Btm: 2017.11.03 @ 08:34:32  
 Time Off Btm: 2017.11.03 @ 11:37:17

**TEST COMMENT:** IFP 30 Minutes Blow built to BOB in 45 seconds/ Gas to surface in 10 minutes  
 ISI 45 Minutes No blow back  
 FFP 45 Minutes Blow built to BOB in 10 seconds  
 FSI 60 Mintues Surface blow back



## PRESSURE SUMMARY

Time (Min.)	Pressure (psig)	Temp (deg F)	Annotation
0	2335.47	107.73	Initial Hydro-static
1	68.66	107.17	Open To Flow (1)
31	54.47	112.87	Shut-In(1)
76	271.32	114.18	End Shut-In(1)
76	56.20	113.51	Open To Flow (2)
120	113.39	116.03	Shut-In(2)
181	266.16	117.37	End Shut-In(2)
183	2298.56	117.89	Final Hydro-static

## Recovery

Length (ft)	Description	Volume (bbl)
55.00	Mud 100%	0.77

## Gas Rates

	Choke (inches)	Pressure (psig)	Gas Rate (Mcf/d)
First Gas Rate	0.13	10.00	9.13
Last Gas Rate	0.13	85.00	37.20
Max. Gas Rate	0.13	85.00	37.20





**TRILOBITE TESTING, INC.**

# DRILL STEM TEST REPORT

American Warrior Inc.  
 PO Box 399  
 Garden City, KS 67846  
 ATTN: Luke Thompson

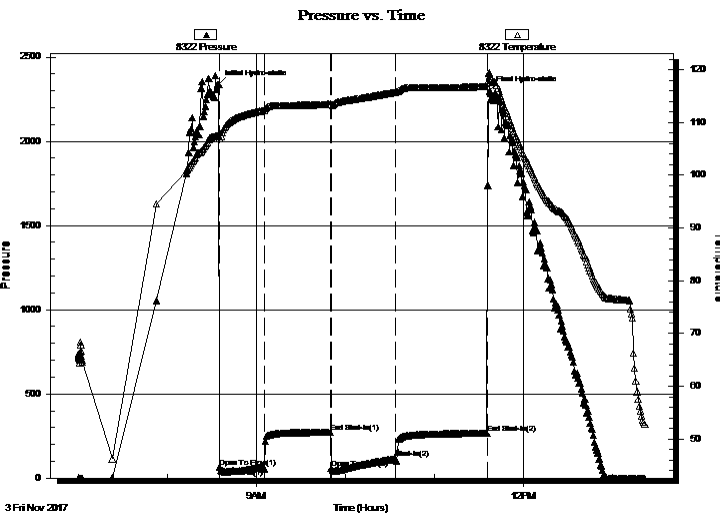
**36-31S-16W Comanche,KS**  
**Schuette #6-36**  
 Job Ticket: 62080 **DST#: 3**  
 Test Start: 2017.11.03 @ 07:00:00

## GENERAL INFORMATION:

Formation: **Pawnee**  
 Deviated: No Whipstock: ft (KB)  
 Time Tool Opened: 08:35:02  
 Time Test Ended: 13:22:02  
 Interval: **4744.00 ft (KB) To 4785.00 ft (KB) (TVD)**  
 Total Depth: 4785.00 ft (KB) (TVD)  
 Hole Diameter: 7.80 inches Hole Condition: Fair  
 Test Type: Conventional Bottom Hole (Initial)  
 Tester: Ken Swinney  
 Unit No: 72  
 Reference Elevations: 1947.00 ft (KB)  
 1935.00 ft (CF)  
 KB to GR/CF: 12.00 ft

**Serial #: 8322 Outside**  
 Press@RunDepth: 266.94 psig @ 4782.00 ft (KB) Capacity: psig  
 Start Date: 2017.11.03 End Date: 2017.11.03 Last Calib.: 2017.11.03  
 Start Time: 07:00:01 End Time: 13:22:02 Time On Btm: 2017.11.03 @ 08:34:32  
 Time Off Btm: 2017.11.03 @ 11:37:17

**TEST COMMENT:** IFP 30 Minutes Blow built to BOB in 45 seconds/ Gas to surface in 10 minutes  
 ISI 45 Minutes No blow back  
 FFP 45 Minutes Blow built to BOB in 10 seconds  
 FSI 60 Mintues Surface blow back



## PRESSURE SUMMARY

Time (Min.)	Pressure (psig)	Temp (deg F)	Annotation
0	2336.57	107.41	Initial Hydro-static
1	64.72	106.88	Open To Flow (1)
31	55.59	112.33	Shut-In(1)
76	271.95	113.44	End Shut-In(1)
76	59.32	113.33	Open To Flow (2)
119	114.90	115.74	Shut-In(2)
181	266.94	116.85	End Shut-In(2)
183	2298.85	118.70	Final Hydro-static

## Recovery

Length (ft)	Description	Volume (bbl)
55.00	Mud 100%	0.77

## Gas Rates

	Choke (inches)	Pressure (psig)	Gas Rate (Mcf/d)
First Gas Rate	0.13	10.00	9.13
Last Gas Rate	0.13	85.00	37.20
Max. Gas Rate	0.13	85.00	37.20



**TRILOBITE  
TESTING, INC.**

# DRILL STEM TEST REPORT

**TOOL DIAGRAM**

American Warrior Inc.

**36-31S-16W Comanche,KS**

PO Box 399  
Garden City, KS 67846

**Schuette #6-36**

Job Ticket: 62080

**DST#: 3**

ATTN: Luke Thompson

Test Start: 2017.11.03 @ 07:00:00

## Tool Information

Drill Pipe:	Length: 4724.00 ft	Diameter: 3.80 inches	Volume: 66.27 bbl	Tool Weight: 2000.00 lb
Heavy Wt. Pipe:	Length: 0.00 ft	Diameter: 0.00 inches	Volume: 0.00 bbl	Weight set on Packer: 20000.00 lb
Drill Collar:	Length: 0.00 ft	Diameter: 0.00 inches	Volume: 0.00 bbl	Weight to Pull Loose: 80000.00 lb
			<u>Total Volume: 66.27 bbl</u>	Tool Chased 0.00 ft
Drill Pipe Above KB:	7.00 ft			String Weight: Initial 73000.00 lb
Depth to Top Packer:	4744.00 ft			Final 73000.00 lb
Depth to Bottom Packer:	ft			
Interval between Packers:	41.00 ft			
Tool Length:	68.00 ft			
Number of Packers:	2	Diameter: 6.75 inches		

Tool Comments:

## Tool Description

Tool Description	Length (ft)	Serial No.	Position	Depth (ft)	Accum. Lengths
Shut-In Tool	5.00			4722.00	
Hydraulic tool	5.00			4727.00	
Jars	5.00			4732.00	
Safety Joint	2.00			4734.00	
Packer - Shale	5.00			4739.00	
Packer	5.00			4744.00	27.00 Bottom Of Top Packer
Anchor	36.00			4780.00	
Recorder	1.00	6755	Inside	4781.00	
Recorder	1.00	8322	Outside	4782.00	
Bullnose	3.00			4785.00	41.00 Anchor Tool
<b>Total Tool Length:</b>	<b>68.00</b>				



**TRILOBITE  
TESTING, INC.**

# DRILL STEM TEST REPORT

**FLUID SUMMARY**

American Warrior Inc.

**36-31S-16W Comanche,KS**

PO Box 399  
Garden City, KS 67846

**Schuetter #6-36**

Job Ticket: 62080

**DST#: 3**

ATTN: Luke Thompson

Test Start: 2017.11.03 @ 07:00:00

## Mud and Cushion Information

Mud Type: Gel Chem

Cushion Type:

Oil API:

deg API

Mud Weight: 9.00 lb/gal

Cushion Length:

ft

Water Salinity:

ppm

Viscosity: 46.00 sec/qt

Cushion Volume:

bbbl

Water Loss: 9.18 in<sup>3</sup>

Gas Cushion Type:

Resistivity: ohm.m

Gas Cushion Pressure:

psig

Salinity: 5000.00 ppm

Filter Cake: 1.00 inches

## Recovery Information

Recovery Table

Length ft	Description	Volume bbl
55.00	Mud 100%	0.772

Total Length: 55.00 ft      Total Volume: 0.772 bbl

Num Fluid Samples: 0

Num Gas Bombs: 0

Serial #:

Laboratory Name:

Laboratory Location:

Recovery Comments:



**TRILOBITE  
TESTING, INC.**

## DRILL STEM TEST REPORT

**GAS RATES**

American Warrior Inc.

**36-31S-16W Comanche,KS**

PO Box 399  
Garden City, KS 67846

**Schuette #6-36**

Job Ticket: 62080

**DST#: 3**

ATTN: Luke Thompson

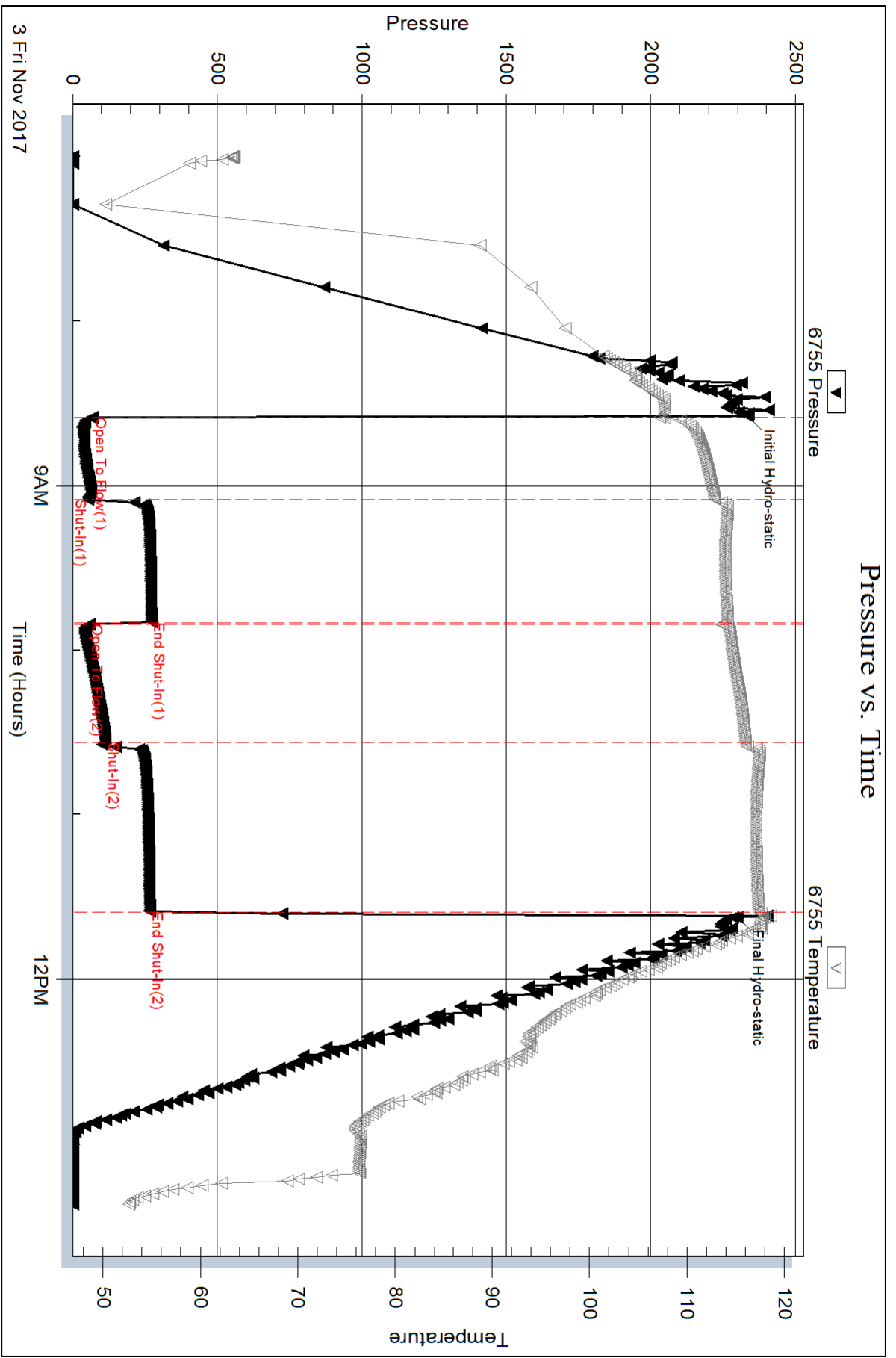
Test Start: 2017.11.03 @ 07:00:00

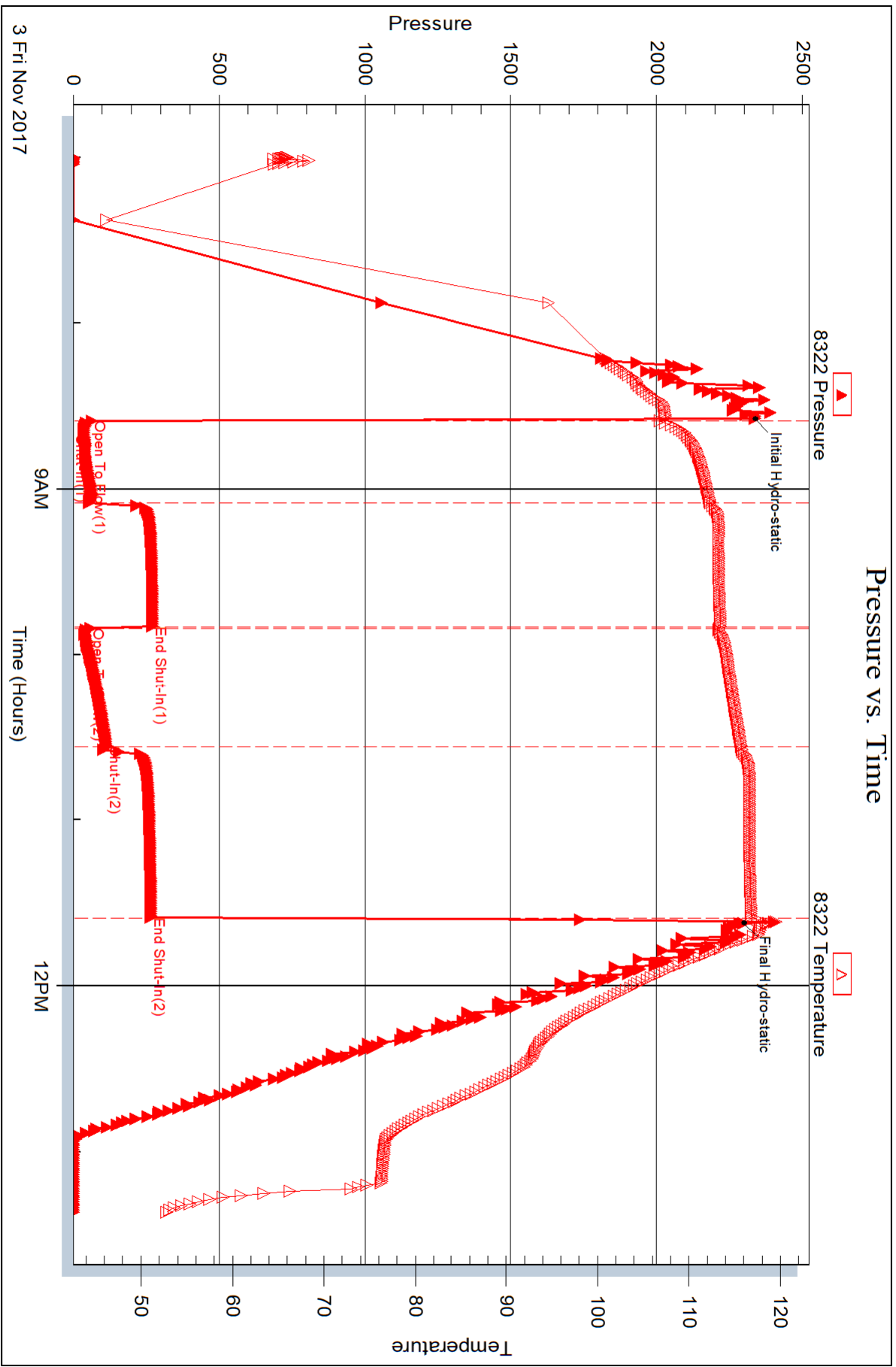
### Gas Rates Information

Temperature: 59 (deg F)  
Relative Density: 0.65  
Z Factor: 0.8

Gas Rates Table

Flow Period	Elapsed Time	Choke (inches)	Pressure (psig)	Gas Rate (Mcf/d)
1	10	0.13	10.00	9.13
1	10	0.13	10.00	9.13
1	20	0.13	22.00	13.62
1	30	0.13	37.00	19.24
2	10	0.13	32.00	17.37
2	20	0.13	50.00	24.10
2	30	0.13	65.00	29.72
2	40	0.13	80.00	35.33
2	45	0.13	85.00	37.20







## DRILL STEM TEST REPORT

Prepared For: **American Warrior Inc.**

PO Box 399  
Garden City, KS 67846

ATTN: Luke Thompson

### **Schuette #6-36**

#### **36-31S-16W Comanche,KS**

Start Date: 2017.11.04 @ 02:01:00

End Date: 2017.11.04 @ 07:07:17

Job Ticket #: 62081                      DST #: 4

Trilobite Testing, Inc

PO Box 362 Hays, KS 67601

ph: 785-625-4778 fax: 785-625-5620

Printed: 2017.11.08 @ 15:23:38



**TRILOBITE TESTING, INC.**

# DRILL STEM TEST REPORT

American Warrior Inc.  
 PO Box 399  
 Garden City, KS 67846  
 ATTN: Luke Thompson

**36-31S-16W Comanche,KS**  
**Schuette #6-36**  
 Job Ticket: 62081 **DST#: 4**  
 Test Start: 2017.11.04 @ 02:01:00

## GENERAL INFORMATION:

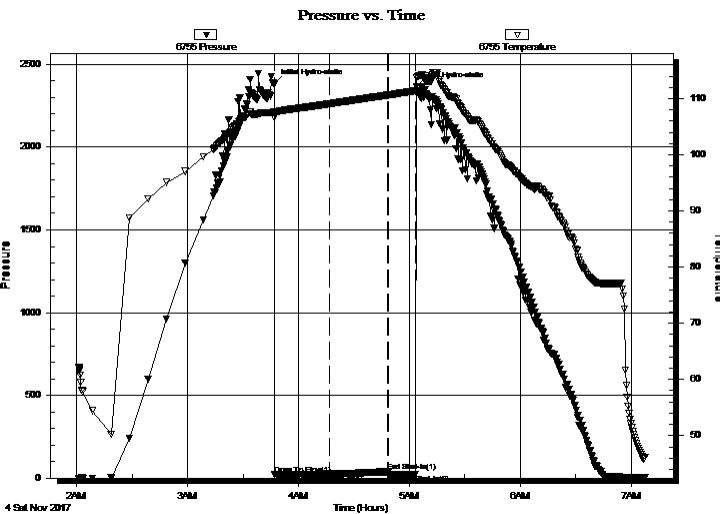
Formation: **Mississippi**  
 Deviated: No Whipstock: ft (KB)  
 Time Tool Opened: 03:47:02  
 Time Test Ended: 07:07:17  
 Interval: **4797.00 ft (KB) To 4825.00 ft (KB) (TVD)**  
 Total Depth: 4825.00 ft (KB) (TVD)  
 Hole Diameter: 7.88 inches Hole Condition: Fair  
 Test Type: Conventional Bottom Hole (Initial)  
 Tester: Ken Swinney  
 Unit No: 72  
 Reference Elevations: 1947.00 ft (KB)  
 1935.00 ft (CF)  
 KB to GR/CF: 12.00 ft

## Serial #: 6755

Inside

Press@RunDepth: 24.84 psig @ 4821.00 ft (KB) Capacity: psig  
 Start Date: 2017.11.04 End Date: 2017.11.04 Last Calib.: 2017.11.04  
 Start Time: 02:01:01 End Time: 07:07:17 Time On Btm: 2017.11.04 @ 03:46:47  
 Time Off Btm: 2017.11.04 @ 05:03:47

TEST COMMENT: IFP 30 Minutes Blow built to 1/2" then died after 25 minutes  
 ISI 30 Mintues No blow back  
 FFP 15 Minutes Surface blow died in 4 minutes 15 minutes pull test



## PRESSURE SUMMARY

Time (Min.)	Pressure (psig)	Temp (deg F)	Annotation
0	2380.68	107.57	Initial Hydro-static
1	22.87	106.61	Open To Flow (1)
30	24.84	109.08	Shut-In(1)
62	39.11	110.61	End Shut-In(1)
62	17.09	110.62	Open To Flow (2)
77	21.95	111.43	Shut-In(2)
77	2366.09	113.80	Final Hydro-static

## Recovery

Length (ft)	Description	Volume (bbl)
20.00	Mud 100%	0.28

## Gas Rates

Choke (inches)	Pressure (psig)	Gas Rate (Mcf/d)





**TRILOBITE TESTING, INC.**

# DRILL STEM TEST REPORT

American Warrior Inc.  
 PO Box 399  
 Garden City, KS 67846  
 ATTN: Luke Thompson

**36-31S-16W Comanche,KS**  
**Schuette #6-36**  
 Job Ticket: 62081 **DST#: 4**  
 Test Start: 2017.11.04 @ 02:01:00

## GENERAL INFORMATION:

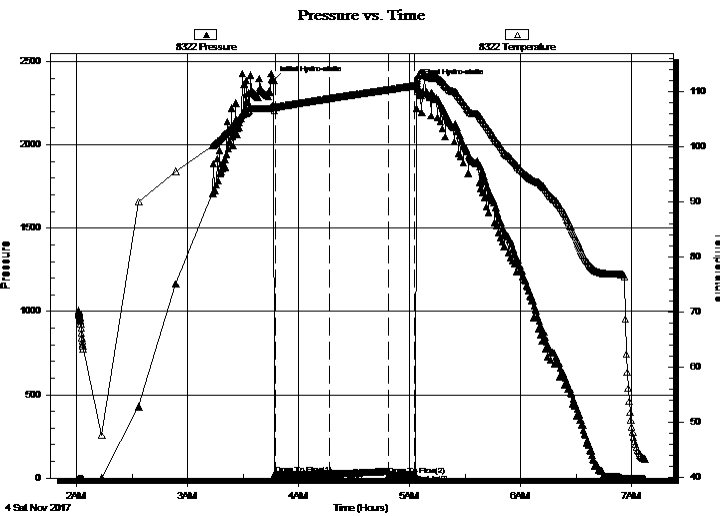
Formation: **Mississippi**  
 Deviated: No Whipstock: ft (KB)  
 Time Tool Opened: 03:47:02  
 Time Test Ended: 07:07:17  
 Interval: **4797.00 ft (KB) To 4825.00 ft (KB) (TVD)**  
 Total Depth: 4825.00 ft (KB) (TVD)  
 Hole Diameter: 7.88 inches Hole Condition: Fair  
 Test Type: Conventional Bottom Hole (Initial)  
 Tester: Ken Swinney  
 Unit No: 72  
 Reference Elevations: 1947.00 ft (KB)  
 1935.00 ft (CF)  
 KB to GR/CF: 12.00 ft

## Serial #: 8322

Outside

Press@RunDepth: psig @ 4822.00 ft (KB) Capacity: psig  
 Start Date: 2017.11.04 End Date: 2017.11.04 Last Calib.: 2017.11.04  
 Start Time: 02:01:01 End Time: 07:07:17 Time On Btm: 2017.11.04 @ 03:46:32  
 Time Off Btm: 2017.11.04 @ 05:03:47

TEST COMMENT: IFP 30 Minutes Blow built to 1/2" then died after 25 minutes  
 ISI 30 Mintues No blow back  
 FFP 15 Minutes Surface blow died in 4 minutes 15 minutes pull test



## PRESSURE SUMMARY

Time (Min.)	Pressure (psig)	Temp (deg F)	Annotation
0	2384.82	107.53	Initial Hydro-static
1	21.58	107.20	Open To Flow (1)
31	25.23	108.85	Shut-In(1)
62	16.82	110.42	Open To Flow (2)
77	22.64	111.15	Shut-In(2)
78	2368.81	112.00	Final Hydro-static

## Recovery

Length (ft)	Description	Volume (bbl)
20.00	Mud 100%	0.28

## Gas Rates

Choke (inches)	Pressure (psig)	Gas Rate (Mcf/d)



**TRILOBITE  
TESTING, INC.**

# DRILL STEM TEST REPORT

**TOOL DIAGRAM**

American Warrior Inc.

**36-31S-16W Comanche,KS**

PO Box 399  
Garden City, KS 67846

**Schuette #6-36**

Job Ticket: 62081

**DST#: 4**

ATTN: Luke Thompson

Test Start: 2017.11.04 @ 02:01:00

## Tool Information

Drill Pipe:	Length: 4787.00 ft	Diameter: 3.80 inches	Volume: 67.15 bbl	Tool Weight: 2000.00 lb
Heavy Wt. Pipe:	Length: 0.00 ft	Diameter: 0.00 inches	Volume: 0.00 bbl	Weight set on Packer: 20000.00 lb
Drill Collar:	Length: 0.00 ft	Diameter: 0.00 inches	Volume: 0.00 bbl	Weight to Pull Loose: 78000.00 lb
			<u>Total Volume: 67.15 bbl</u>	Tool Chased 0.00 ft
Drill Pipe Above KB:	17.00 ft			String Weight: Initial 70000.00 lb
Depth to Top Packer:	4797.00 ft			Final 70000.00 lb
Depth to Bottom Packer:	ft			
Interval between Packers:	28.00 ft			
Tool Length:	55.00 ft			
Number of Packers:	2	Diameter: 6.75 inches		

Tool Comments:

## Tool Description

Tool Description	Length (ft)	Serial No.	Position	Depth (ft)	Accum. Lengths
Shut-In Tool	5.00			4775.00	
Hydraulic tool	5.00			4780.00	
Jars	5.00			4785.00	
Safety Joint	2.00			4787.00	
Packer - Shale	5.00			4792.00	
Packer	5.00			4797.00	27.00 Bottom Of Top Packer
Anchor	23.00			4820.00	
Recorder	1.00	6755	Inside	4821.00	
Recorder	1.00	8322	Outside	4822.00	
Bullnose	3.00			4825.00	28.00 Anchor Tool
<b>Total Tool Length:</b>	<b>55.00</b>				



**TRILOBITE  
TESTING, INC.**

# DRILL STEM TEST REPORT

**FLUID SUMMARY**

American Warrior Inc.

**36-31S-16W Comanche,KS**

PO Box 399  
Garden City, KS 67846

**Schuette #6-36**

Job Ticket: 62081

**DST#: 4**

ATTN: Luke Thompson

Test Start: 2017.11.04 @ 02:01:00

## Mud and Cushion Information

Mud Type: Gel Chem

Cushion Type:

Oil API:

deg API

Mud Weight: 9.00 lb/gal

Cushion Length:

ft

Water Salinity:

ppm

Viscosity: 56.00 sec/qt

Cushion Volume:

bbbl

Water Loss: 8.78 in<sup>3</sup>

Gas Cushion Type:

Resistivity: ohm.m

Gas Cushion Pressure:

psig

Salinity: 5000.00 ppm

Filter Cake: 1.00 inches

## Recovery Information

Recovery Table

Length ft	Description	Volume bbl
20.00	Mud 100%	0.281

Total Length: 20.00 ft      Total Volume: 0.281 bbl

Num Fluid Samples: 0

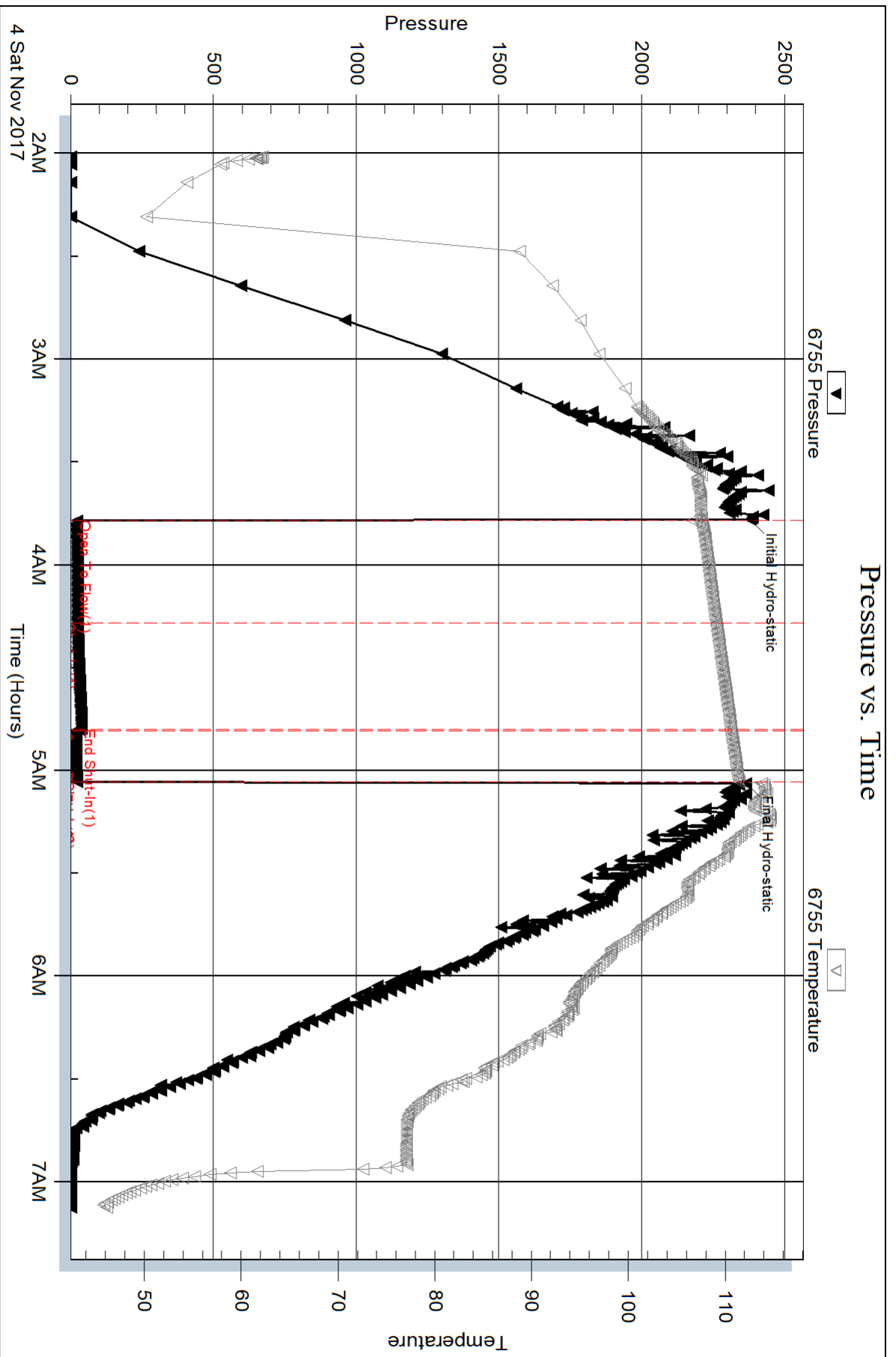
Num Gas Bombs: 0

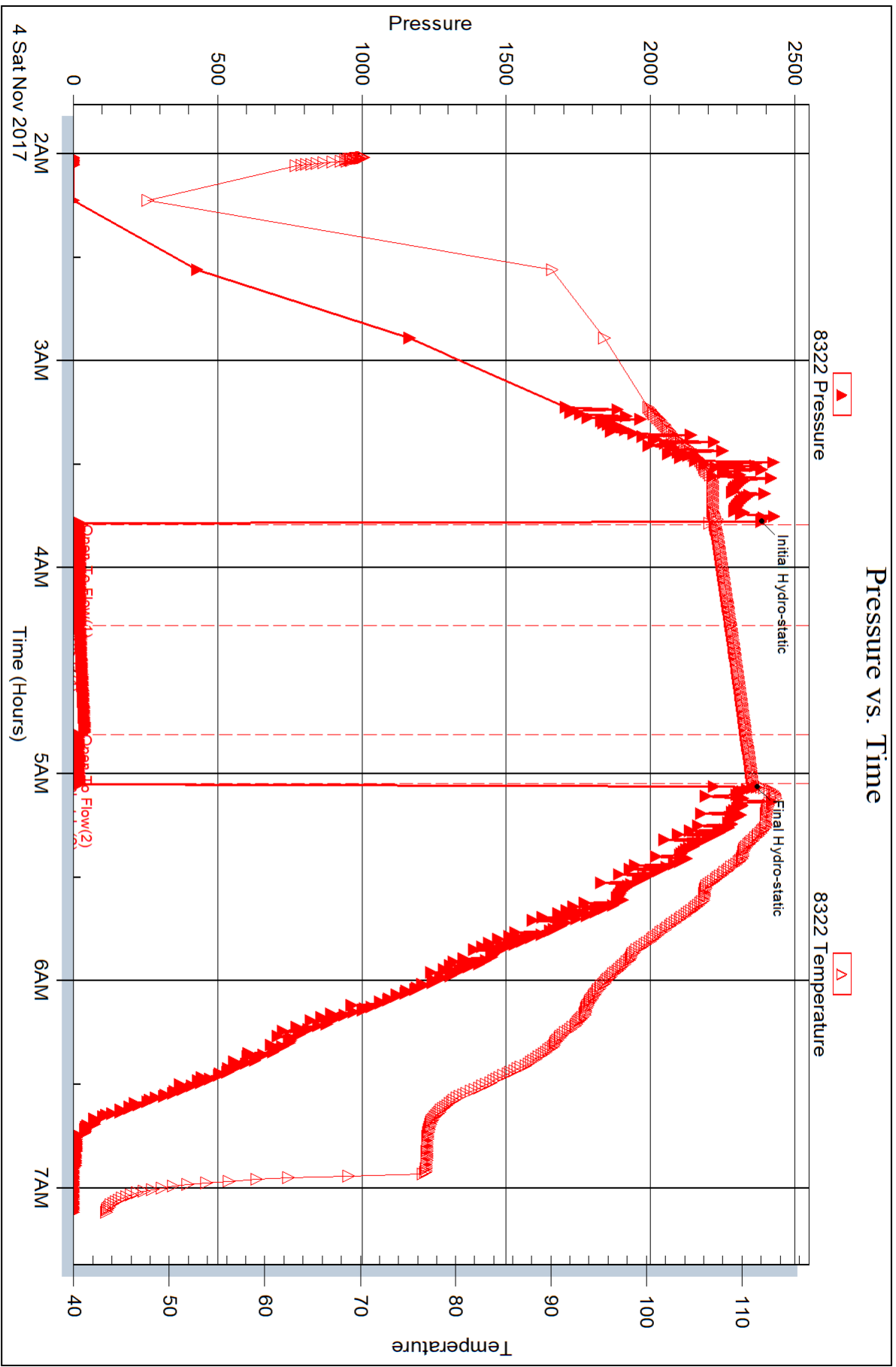
Serial #:

Laboratory Name:

Laboratory Location:

Recovery Comments:







## DRILL STEM TEST REPORT

Prepared For: **American Warrior Inc.**

PO Box 399  
Garden City, KS 67846

ATTN: Luke Thompson

### **Schuette #6-36**

#### **36-31S-16W Comanche,KS**

Start Date: 2017.11.04 @ 15:39:00

End Date: 2017.11.04 @ 22:27:02

Job Ticket #: 62082                      DST #: 5

Trilobite Testing, Inc

PO Box 362 Hays, KS 67601

ph: 785-625-4778 fax: 785-625-5620

Printed: 2017.11.08 @ 15:16:27









**TRILOBITE  
TESTING, INC.**

# DRILL STEM TEST REPORT

**TOOL DIAGRAM**

American Warrior Inc.

**36-31S-16W Comanche,KS**

PO Box 399  
Garden City, KS 67846

**Schuette #6-36**

Job Ticket: 62082

**DST#: 5**

ATTN: Luke Thompson

Test Start: 2017.11.04 @ 15:39:00

## Tool Information

Drill Pipe:	Length: 4789.00 ft	Diameter: 3.80 inches	Volume: 67.18 bbl	Tool Weight:	2000.00 lb
Heavy Wt. Pipe:	Length: 0.00 ft	Diameter: 0.00 inches	Volume: 0.00 bbl	Weight set on Packer:	20000.00 lb
Drill Collar:	Length: 0.00 ft	Diameter: 0.00 inches	Volume: 0.00 bbl	Weight to Pull Loose:	82000.00 lb
			<u>Total Volume: 67.18 bbl</u>	Tool Chased	0.00 ft
Drill Pipe Above KB:	18.00 ft			String Weight: Initial	72000.00 lb
Depth to Top Packer:	4798.00 ft			Final	72000.00 lb
Depth to Bottom Packer:	ft				
Interval between Packers:	43.00 ft				
Tool Length:	70.00 ft				
Number of Packers:	2	Diameter: 6.75 inches			
Tool Comments:					

## Tool Description

Tool Description	Length (ft)	Serial No.	Position	Depth (ft)	Accum. Lengths
Shut-In Tool	5.00			4776.00	
Hydraulic tool	5.00			4781.00	
Jars	5.00			4786.00	
Safety Joint	2.00			4788.00	
Packer - Shale	5.00			4793.00	
Packer	5.00			4798.00	27.00 Bottom Of Top Packer
Anchor	38.00			4836.00	
Recorder	1.00	6755	Inside	4837.00	
Recorder	1.00	8322	Outside	4838.00	
Bullnose	3.00			4841.00	43.00 Anchor Tool
<b>Total Tool Length:</b>	<b>70.00</b>				



**TRILOBITE  
TESTING, INC.**

# DRILL STEM TEST REPORT

**FLUID SUMMARY**

American Warrior Inc.

**36-31S-16W Comanche,KS**

PO Box 399  
Garden City, KS 67846

**Schuette #6-36**

Job Ticket: 62082

**DST#: 5**

ATTN: Luke Thompson

Test Start: 2017.11.04 @ 15:39:00

## Mud and Cushion Information

Mud Type: Gel Chem

Cushion Type:

Oil API:

deg API

Mud Weight: 9.00 lb/gal

Cushion Length:

ft

Water Salinity:

ppm

Viscosity: 49.00 sec/qt

Cushion Volume:

bbbl

Water Loss: 9.58 in<sup>3</sup>

Gas Cushion Type:

Resistivity: ohm.m

Gas Cushion Pressure:

psig

Salinity: 5000.00 ppm

Filter Cake: 1.00 inches

## Recovery Information

Recovery Table

Length ft	Description	Volume bbbl
50.00	Mud 100%	0.701
0.00	310' GIP	0.000

Total Length: 50.00 ft      Total Volume: 0.701 bbl

Num Fluid Samples: 0

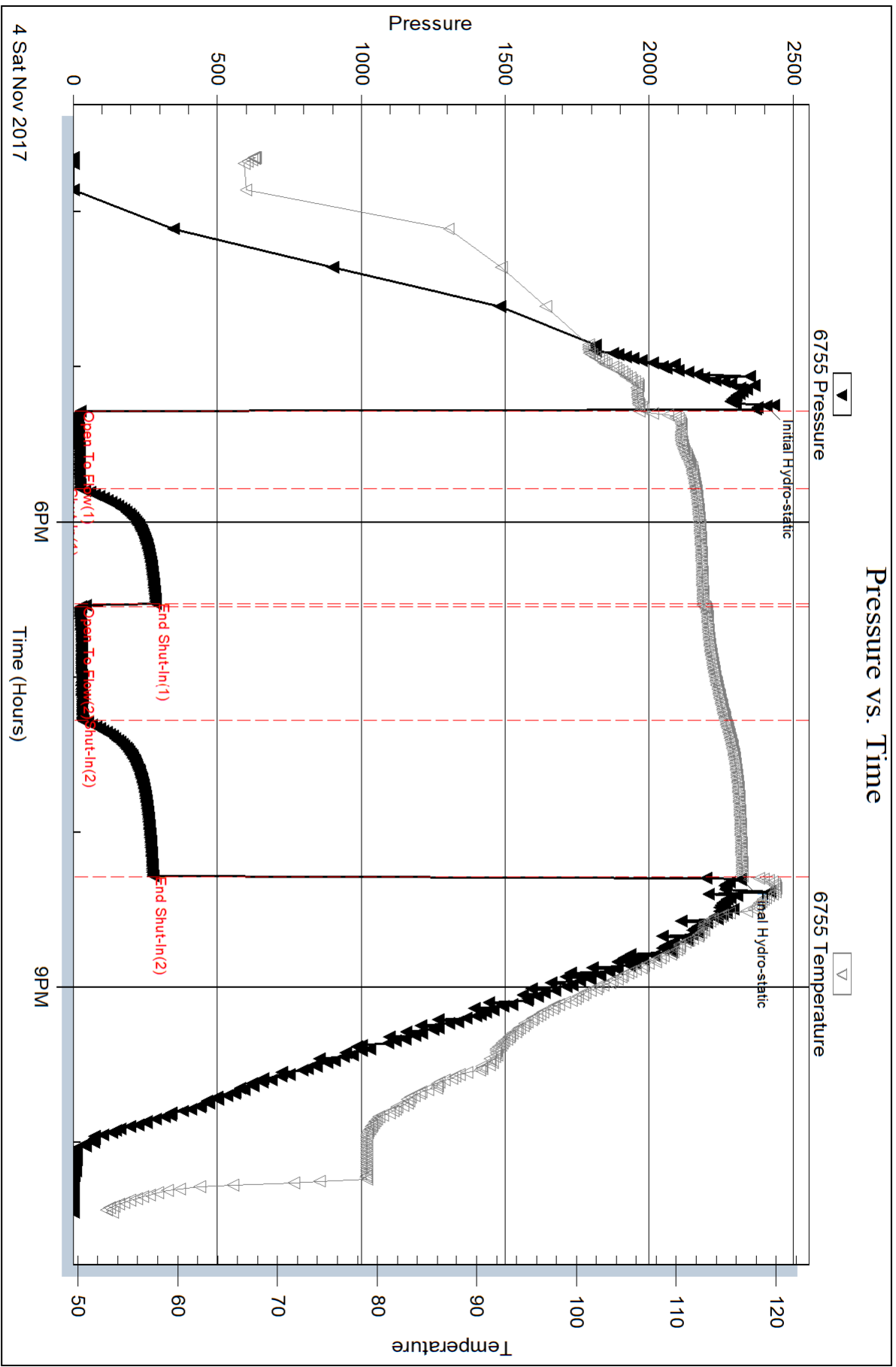
Num Gas Bombs: 0

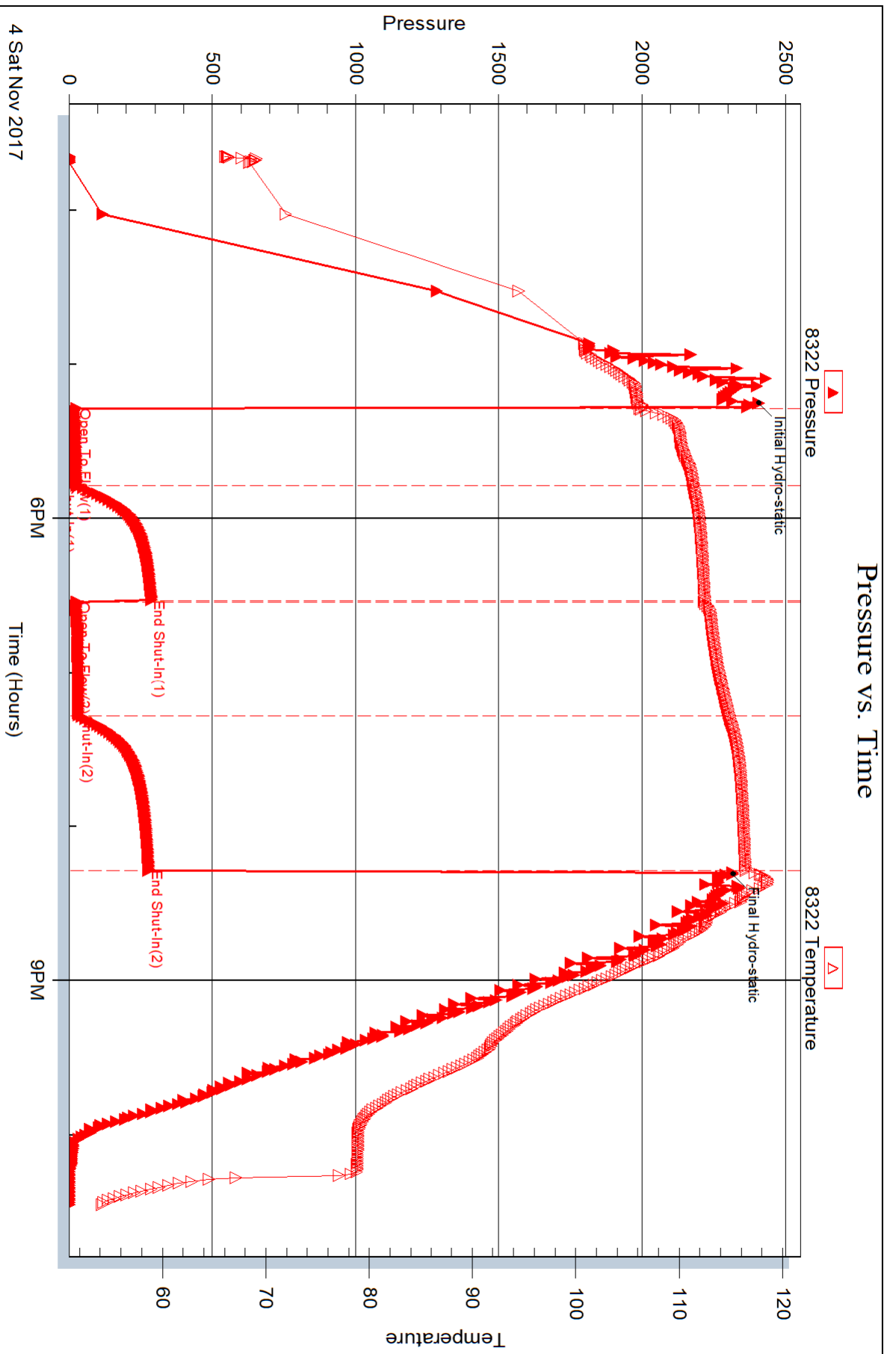
Serial #:

Laboratory Name:

Laboratory Location:

Recovery Comments:







## DRILL STEM TEST REPORT

Prepared For: **American Warrior Inc.**

PO Box 399  
Garden City, KS 67846

ATTN: Luke Thompson

### **Schuette #6-36**

#### **36-31S-16W Comanche,KS**

Start Date: 2017.11.06 @ 10:15:00

End Date: 2017.11.06 @ 17:01:02

Job Ticket #: 62083                      DST #: 6

Trilobite Testing, Inc

PO Box 362 Hays, KS 67601

ph: 785-625-4778 fax: 785-625-5620

Printed: 2017.11.08 @ 15:15:53







**TRILOBITE  
TESTING, INC.**

# DRILL STEM TEST REPORT

**TOOL DIAGRAM**

American Warrior Inc.

**36-31S-16W Comanche,KS**

PO Box 399  
Garden City, KS 67846

**Schuette #6-36**

Job Ticket: 62083

**DST#: 6**

ATTN: Luke Thompson

Test Start: 2017.11.06 @ 10:15:00

## Tool Information

Drill Pipe:	Length: 5073.00 ft	Diameter: 3.80 inches	Volume: 71.16 bbl	Tool Weight:	2000.00 lb
Heavy Wt. Pipe:	Length: 0.00 ft	Diameter: 0.00 inches	Volume: 0.00 bbl	Weight set on Packer:	20000.00 lb
Drill Collar:	Length: 0.00 ft	Diameter: 0.00 inches	Volume: 0.00 bbl	Weight to Pull Loose:	80000.00 lb
			<u>Total Volume: 71.16 bbl</u>	Tool Chased	0.00 ft
Drill Pipe Above KB:	25.00 ft			String Weight: Initial	76000.00 lb
Depth to Top Packer:	5075.00 ft			Final	76000.00 lb
Depth to Bottom Packer:	ft				
Interval between Packers:	35.00 ft				
Tool Length:	62.00 ft				
Number of Packers:	2	Diameter: 6.75 inches			

Tool Comments:

## Tool Description

Tool Description	Length (ft)	Serial No.	Position	Depth (ft)	Accum. Lengths
Shut-In Tool	5.00			5053.00	
Hydraulic tool	5.00			5058.00	
Jars	5.00			5063.00	
Safety Joint	2.00			5065.00	
Top Packer	5.00			5070.00	
Packer	5.00			5075.00	27.00 Bottom Of Top Packer
Anchor	30.00			5105.00	
Recorder	1.00	6755	Inside	5106.00	
Recorder	1.00	8322	Outside	5107.00	
Bullnose	3.00			5110.00	35.00 Anchor Tool
<b>Total Tool Length:</b>	<b>62.00</b>				





**TRILOBITE  
TESTING, INC.**

# DRILL STEM TEST REPORT

**FLUID SUMMARY**

American Warrior Inc.

**36-31S-16W Comanche,KS**

PO Box 399  
Garden City, KS 67846

**Schuette #6-36**

Job Ticket: 62083

**DST#: 6**

ATTN: Luke Thompson

Test Start: 2017.11.06 @ 10:15:00

## Mud and Cushion Information

Mud Type: Gel Chem

Cushion Type:

Oil API:

deg API

Mud Weight: 9.00 lb/gal

Cushion Length:

ft

Water Salinity:

52000 ppm

Viscosity: 55.00 sec/qt

Cushion Volume:

bbbl

Water Loss: 9.39 in<sup>3</sup>

Gas Cushion Type:

Resistivity: ohm.m

Gas Cushion Pressure:

psig

Salinity: 5000.00 ppm

Filter Cake: 1.00 inches

## Recovery Information

Recovery Table

Length ft	Description	Volume bbl
180.00	MW Mud 30% Water 70%	2.525

Total Length: 180.00 ft      Total Volume: 2.525 bbl

Num Fluid Samples: 0

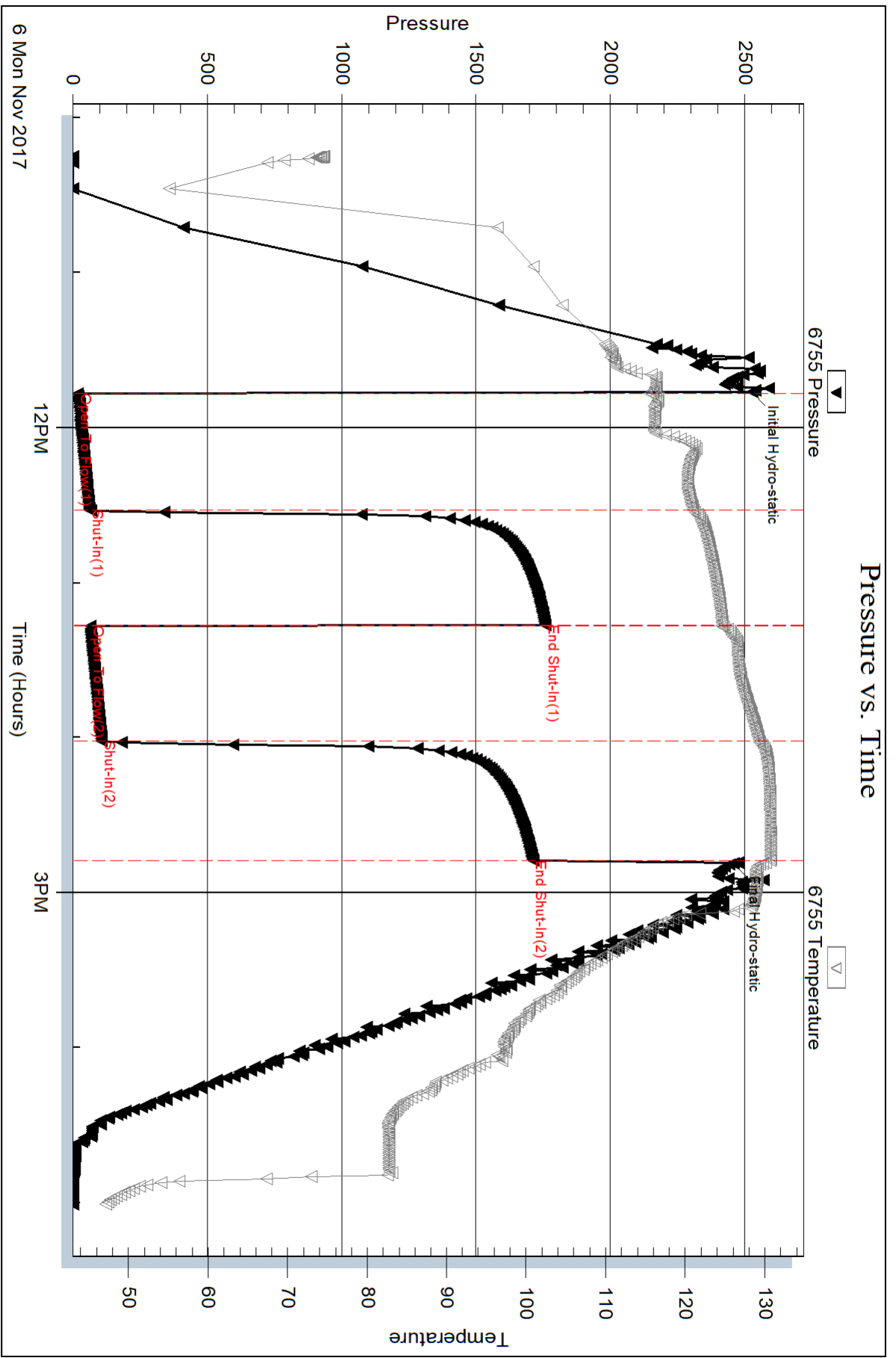
Num Gas Bombs: 0

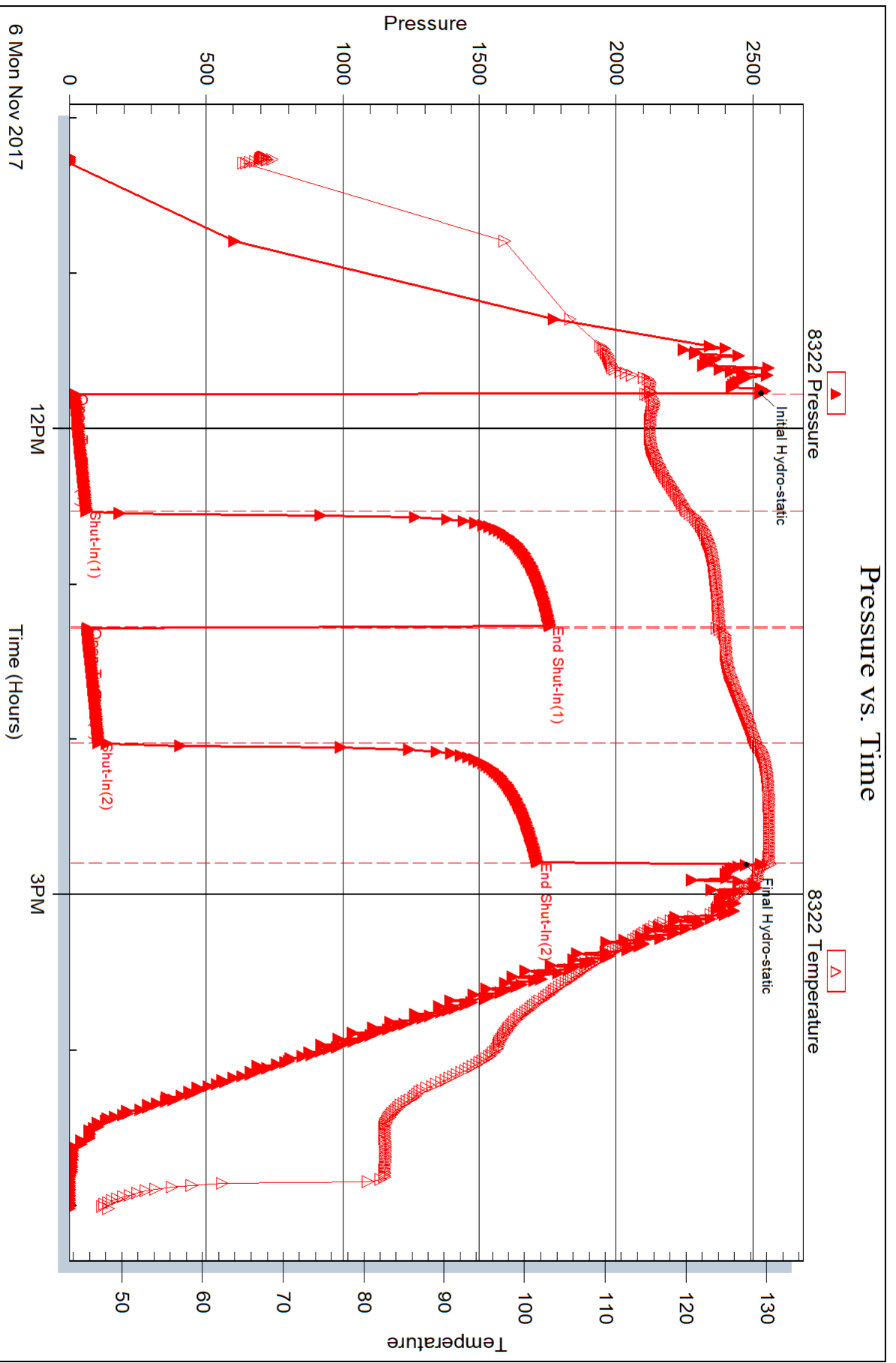
Serial #:

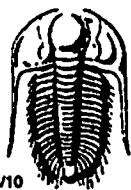
Laboratory Name:

Laboratory Location:

Recovery Comments: Recovery Resistivity .205 ohms @ 51 deg.







# TRILOBITE TESTING INC.

1515 Commerce Parkway • Hays, Kansas 67601

## Test Ticket

NO. 62078

Well Name & No. Schuette #6-36 Test No. 1 Date 31 OCT 17  
 Company American Warrior Inc. Elevation 1947 KB 1935 GL  
 Address 3118 Cummings Rd PO Box 399 Garden City Kansas 67846  
 Co. Rep / Geo. Luke Thompson Rig Duke Rig 1  
 Location: Sec. 36 Twp. 31S Rge. 16W Co. Comanch State KS

Interval Tested 4232-4250 Zone Tested Tonganoxic  
 Anchor Length 18 Drill Pipe Run 4271 Mud Wt. 8.9  
 Top Packer Depth 4227 Drill Collars Run - Vis 48  
 Bottom Packer Depth 4232 Wt. Pipe Run - WL 8.8  
 Total Depth 4250 Chlorides 4000 ppm System LCM 14 #

Blow Description I.F. Blow built to B.O.B in 8 minutes  
I.S.I. 6" Blow back  
F.F. Blow built to BOB in 5 minutes  
F.S.I. Blow back built to BOB in 5 minutes

Rec	Feet of	%gas	%oil	%water	%mud
<u>62</u>	<u>Mud cut gassy emulsified oily water</u>	<u>10</u>	<u>10</u>	<u>75</u>	<u>5</u>
<u>62</u>	<u>Gas cut emulsified mud</u>	<u>5</u>	<u>25</u>	<u>%</u>	<u>75</u>
<u>310</u>	<u>Gassy muddy emulsified oily water</u>	<u>20</u>	<u>30</u>	<u>30</u>	<u>20</u>
<u>2728</u>	<u>GIIP</u>	<u>100</u>	<u>%</u>	<u>%</u>	<u>%</u>
		<u>%</u>	<u>%</u>	<u>%</u>	<u>%</u>

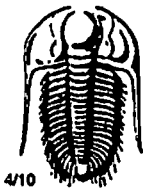
Rec Total 434 BHT 120 Gravity \_\_\_\_\_ API RW .50 @ 40 °F Chlorides 27,000 ppm

(A) Initial Hydrostatic <u>1991</u>	<input checked="" type="checkbox"/> Test <u>1150</u>	T-On Location <u>9:17 am</u>
(B) First Initial Flow <u>60</u>	<input checked="" type="checkbox"/> Jars <u>250</u>	T-Started <u>3:27 pm</u>
(C) First Final Flow <u>105</u>	<input checked="" type="checkbox"/> Safety Joint <u>75</u>	T-Open <u>5:31 pm</u>
(D) Initial Shut-In <u>1331</u>	<input type="checkbox"/> Circ Sub _____	T-Pulled <u>4:31 pm</u>
(E) Second Initial Flow <u>122</u>	<input type="checkbox"/> Hourly Standby _____	T-Out <u>10:58 pm</u>
(F) Second Final Flow <u>184</u>	<input checked="" type="checkbox"/> Mileage <u>120</u> <sup>90</sup>	Comments _____
(G) Final Shut-In <u>1167</u>	<input type="checkbox"/> Sampler _____	_____
(H) Final Hydrostatic <u>1956</u>	<input type="checkbox"/> Straddle _____	_____
Initial Open <u>30</u>	<input checked="" type="checkbox"/> Shale Packer <u>250</u>	<input type="checkbox"/> Ruined Shale Packer _____
Initial Shut-In <u>45</u>	<input type="checkbox"/> Extra Packer _____	<input type="checkbox"/> Ruined Packer _____
Final Flow <u>45</u>	<input type="checkbox"/> Extra Recorder _____	<input type="checkbox"/> Extra Copies _____
Final Shut-In <u>60</u>	<input type="checkbox"/> Day Standby _____	Sub Total <u>0</u>
	<input type="checkbox"/> Accessibility _____	Total <u>1815</u>
	Sub Total <u>1815</u>	MP/DST Disc't _____

Approved By \_\_\_\_\_

Our Representative \_\_\_\_\_

TriLOBite Testing Inc. shall not be liable for damaged or any kind of the property or personnel of the one for whom a test is made, or for any loss suffered or sustained, directly or indirectly, through the use of its equipment, or its statements or opinion concerning the results of any test, tools lost or damaged in the hole shall be paid for at cost by the party for whom the test is made.



# TRILOBITE TESTING INC.

1515 Commerce Parkway • Hays, Kansas 67601

## Test Ticket

NO. 62079

Well Name & No. Schuetz #6-36 Test No. 2 Date 2 NOV 17  
 Company American Warrior Inc Elevation 1947 KB 1935 GL  
 Address 3118 Cummings Road PO Box 399 Garden City Kansas 67846  
 Co. Rep / Geo. Luke Thompson Rig Duke Rig 1  
 Location: Sec. 36 Twp. 31S Rge. 16W Co. Comanche State KS

Interval Tested 4710-4755 Zone Tested Marmaton  
 Anchor Length 45 Drill Pipe Run 4692 Mud Wt. 9.1  
 Top Packer Depth 4705 Drill Collars Run — Vis 46  
 Bottom Packer Depth 4710 Wt. Pipe Run — WL 9.2  
 Total Depth 4755 Chlorides 5000 ppm System LCM 8#

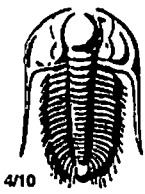
Blow Description I.F. Blow built to 6 inches  
I.S.I. no blow back  
F.F. Blow built to BOB in 19 minutes  
F.S.I. no blow back

Rec	Feet of	%gas	%oil	%water	%mud
<u>20</u>	<u>Mud w/ slow oil</u>				<u>100</u>
<u>400</u>	<u>GFI</u>	<u>100</u>			

Rec Total BHT 117 Gravity — API RW — @ — °F Chlorides — ppm

(A) Initial Hydrostatic <u>2291</u>	<input checked="" type="checkbox"/> Test <u>1150</u>	T-On Location <u>1:07 pm</u>
(B) First Initial Flow <u>13</u>	<input checked="" type="checkbox"/> Jars <u>250</u>	T-Started <u>1:39 pm</u>
(C) First Final Flow <u>17</u>	<input checked="" type="checkbox"/> Safety Joint <u>75</u>	T-Open <u>3:13 pm</u>
(D) Initial Shut-In <u>190</u>	<input type="checkbox"/> Circ Sub <u>—</u>	T-Pulled <u>5:58 pm</u>
(E) Second Initial Flow <u>14</u>	<input type="checkbox"/> Hourly Standby <u>—</u>	T-Out <u>8:14 pm</u>
(F) Second Final Flow <u>17</u>	<input checked="" type="checkbox"/> Mileage <u>120</u> <sup>90</sup>	Comments <u>—</u>
(G) Final Shut-In <u>301</u>	<input type="checkbox"/> Sampler <u>—</u>	<input type="checkbox"/> Ruined Shale Packer <u>—</u>
(H) Final Hydrostatic <u>2255</u>	<input type="checkbox"/> Straddle <u>—</u>	<input type="checkbox"/> Ruined Packer <u>—</u>
Initial Open <u>30</u>	<input checked="" type="checkbox"/> Shale Packer <u>250</u>	<input type="checkbox"/> Extra Copies <u>—</u>
Initial Shut-In <u>30</u>	<input type="checkbox"/> Extra Packer <u>—</u>	Sub Total <u>0</u>
Final Flow <u>45</u>	<input type="checkbox"/> Extra Recorder <u>—</u>	Total <u>1815.00</u>
Final Shut-In <u>60</u>	<input type="checkbox"/> Day Standby <u>—</u>	MP/DST Disc't <u>—</u>
	<input type="checkbox"/> Accessibility <u>—</u>	
	Sub Total <u>1815</u>	

Approved By — Our Representative [Signature]  
 Trilobite Testing Inc. shall not be liable for damaged of any kind of the property or personnel of the one for whom a test is made, or for any loss suffered or sustained, directly or indirectly, through the use of its equipment, or its statements or opinion concerning the results of any test, tools lost or damaged in the hole shall be paid for at cost by the party for whom the test is made.



# TRILOBITE TESTING INC.

1515 Commerce Parkway • Hays, Kansas 67601

## Test Ticket

NO. 62080

Well Name & No. Schutte #6-36 Test No. 3 Date 3 NOV 17  
 Company American Warrior Inc Elevation 1947 KB 1935 GL  
 Address 3118 Lummings Road PO Box 379 Garden City, Kansas 67846  
 Co. Rep / Geo. Luke Thompson Rig Duke Rig 1  
 Location: Sec. 36 Twp. 31S Rge. 16W Co. Comanche State KS

Interval Tested 4744-4785 Zone Tested Pawnee  
 Anchor Length 41 Drill Pipe Run 4724 Mud Wt. 9.1  
 Top Packer Depth 4739 Drill Collars Run - Vis 46  
 Bottom Packer Depth 4744 Wt. Pipe Run - WL 9.2  
 Total Depth 4785 Chlorides 5000 ppm System LCM 8#

Blow Description I.F. Blow built to BOB in 45 sec. / Gas to surface 10 min  
I.S.I. No blow back  
F.F. Blow built to BOB in 10 seconds  
F.S.I. Surface blowback

Rec	Feet of	%gas	%oil	%water	%mud
<u>55</u>	<u>Mud</u>			<u>100</u>	
Rec	Feet of	%gas	%oil	%water	%mud
Rec	Feet of	%gas	%oil	%water	%mud
Rec	Feet of	%gas	%oil	%water	%mud
Rec	Feet of	%gas	%oil	%water	%mud

Rec Total 55 BHT 117 Gravity 1150 API RW 250 @ 90 °F Chlorides 5000 ppm

(A) Initial Hydrostatic 2335  Test 1150 T-On Location 6:15 am  
 (B) First Initial Flow 68  Jars 250 T-Started 7:00 am  
 (C) First Final Flow 54  Safety Joint 75 T-Open 8:35 am  
 (D) Initial Shut-In 271  Circ Sub \_\_\_\_\_ T-Pulled 11:35 am  
 (E) Second Initial Flow 56  Hourly Standby \_\_\_\_\_ T-Out 1:27 pm  
 (F) Second Final Flow 113  Mileage 120 <sup>90</sup> \_\_\_\_\_  
 (G) Final Shut-In 266  Sampler \_\_\_\_\_  
 (H) Final Hydrostatic 2298  Straddle \_\_\_\_\_  
 Shale Packer 250 \_\_\_\_\_  
 Extra Packer \_\_\_\_\_  
 Extra Recorder \_\_\_\_\_  
 Day Standby \_\_\_\_\_  
 Accessibility \_\_\_\_\_  
 Sub Total 1815

Comments \_\_\_\_\_  
 Ruined Shale Packer \_\_\_\_\_  
 Ruined Packer \_\_\_\_\_  
 Extra Copies \_\_\_\_\_  
 Sub Total 0  
 Total 1815.00  
 MP/DST Disc't \_\_\_\_\_

Approved By [Signature] Our Representative [Signature]

Trilobite Testing Inc. shall not be liable for damaged or destroyed property or personnel of the one for whom a test is made, or for any loss suffered or sustained, directly or indirectly, through the use of its equipment, or its statements or opinion concerning the results of any test, tools lost or damaged in the hole shall be paid for at cost by the party for whom the test is made.





# TRIOBITE TESTING INC.

1515 Commerce Parkway • Hays, Kansas 67601

## Test Ticket

NO. 62081

Well Name & No. Schvette #6-36 Test No. 4 Date 4/10/17  
 Company American Warrior Inc Elevation 1947 KB 1935 GL  
 Address 3118 Cummings Road PO Box 399 Garden City Kansas 67846  
 Co. Rep / Geo. Luke Thompson Rig Duke Rig 1  
 Location: Sec. 36 Twp. 31S Rge. 16W Co. Comanche State KS

Interval Tested 4797-4825 Zone Tested Mississippi  
 Anchor Length ~~4797~~ 28 Drill Pipe Run 4797 Mud Wt. 9.2  
 Top Packer Depth 4797 Drill Collars Run — Vis 56 lb  
 Bottom Packer Depth 4797 Wt. Pipe Run — WL 8.8 lb  
 Total Depth 4825 Chlorides 5000 ppm System LCM 7#

Blow Description I.F. Blow built to 1/2 inch then died by 25 minutes  
I.S.I. No blow back  
F.F. Surface blow died in 9 minutes / 15 minutes pull test  
E.S.I. NA

Rec	Feet of	%gas	%oil	%water	%mud
<u>20</u>	<u>Mud</u>				<u>100%</u>

Rec Total 20 BHT 111 Gravity \_\_\_\_\_ API RW \_\_\_\_\_ @ \_\_\_\_\_ °F Chlorides \_\_\_\_\_ ppm

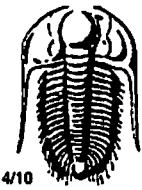
(A) Initial Hydrostatic <u>2380</u>	<input checked="" type="checkbox"/> Test <u>1150</u>	T-On Location _____
(B) First Initial Flow <u>22</u>	<input checked="" type="checkbox"/> Jars <u>250</u>	T-Started <u>2:01 am</u>
(C) First Final Flow <u>24</u>	<input checked="" type="checkbox"/> Safety Joint <u>75</u>	T-Open <u>3:46 am</u>
(D) Initial Shut-In <u>39</u>	<input type="checkbox"/> Circ Sub _____	T-Pulled <u>5:01 am</u>
(E) Second Initial Flow <u>17</u>	<input type="checkbox"/> Hourly Standby _____	T-Out <u>7:02 am</u>
(F) Second Final Flow <u>21</u>	<input checked="" type="checkbox"/> Mileage <u>120</u> <sup>90</sup>	Comments _____
(G) Final Shut-In _____	<input type="checkbox"/> Sampler _____	_____
(H) Final Hydrostatic <u>2366</u>	<input type="checkbox"/> Straddle _____	<input type="checkbox"/> Ruined Shale Packer _____
	<input checked="" type="checkbox"/> Shale Packer <u>250</u>	<input type="checkbox"/> Ruined Packer _____
Initial Open <u>30</u>	<input type="checkbox"/> Extra Packer _____	<input type="checkbox"/> Extra Copies _____
Initial Shut-In <u>30</u>	<input type="checkbox"/> Extra Recorder _____	Sub Total <u>0</u>
Final Flow <u>15</u>	<input type="checkbox"/> Day Standby _____	Total <u>1815.00</u>
Final Shut-In _____	<input type="checkbox"/> Accessibility _____	MP/DST Disc't _____
	Sub Total <u>1815</u>	

Approved By \_\_\_\_\_

Our Representative \_\_\_\_\_

Triobite Testing Inc. shall not be liable for damaged of any kind of the property or personnel of the one for whom a test is made, or for any loss suffered or sustained, directly or indirectly, through the use of its equipment, or its statements or opinion concerning the results of any test, tools lost or damaged in the hole shall be paid for at cost by the party for whom the test is made.





# TRILOBITE TESTING INC.

1515 Commerce Parkway • Hays, Kansas 67601

## Test Ticket

NO. 62082

Well Name & No. Schutte #6-36 Test No. 5 Date 4 NOV 17  
 Company American Warrior Inc Elevation 1947 KB 1935 GL  
 Address 3118 Cummings Road PO Box 399 Garden City Kansas 67846  
 Co. Rep / Geo. Luke Thompson Rig Duke Rig 1  
 Location: Sec. 36 Twp. J15 Rge. 16W Co. Comanche State KS

Interval Tested 4798-4841 Zone Tested Mississippi  
 Anchor Length 43 Drill Pipe Run 4789 Mud Wt. 9.1  
 Top Packer Depth 4793 Drill Collars Run — Vis 49  
 Bottom Packer Depth 4798 Wt. Pipe Run — WL 9.6  
 Total Depth 4841 Chlorides 5000 ppm System LCM 5 1/2 #

Blow Description I.F. Blow built to BOB in 8 1/2 minutes  
I.S.I. No blow back  
F.F. Blow built to BOB in 1 minute  
F.S.I. No blow back

Rec	Feet of	%gas	%oil	%water	%mud
<u>50</u>	<u>Mud</u>			<u>100</u>	
<u>310</u>		<u>100</u>			

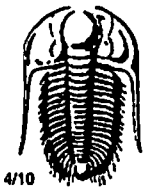
Rec Total 50 BHT 116 Gravity \_\_\_\_\_ API RW \_\_\_\_\_ @ \_\_\_\_\_ °F Chlorides \_\_\_\_\_ ppm

(A) Initial Hydrostatic 2406  Test 1150 T-On Location 2:50 pm  
 (B) First Initial Flow 25  Jars 250 T-Started 3:39 pm  
 (C) First Final Flow 24  Safety Joint 75 T-Open 5:16 pm  
 (D) Initial Shut-In 285  Circ Sub \_\_\_\_\_ T-Pulled 8:16 pm  
 (E) Second Initial Flow 25  Hourly Standby \_\_\_\_\_ T-Out 10:27 pm  
 (F) Second Final Flow 32  Mileage 120 90 Comments \_\_\_\_\_  
 (G) Final Shut-In 276  Sampler \_\_\_\_\_  
 (H) Final Hydrostatic 2318  Straddle \_\_\_\_\_  
 Shale Packer 250  Ruined Shale Packer \_\_\_\_\_  
 Extra Packer \_\_\_\_\_  Ruined Packer \_\_\_\_\_  
 Extra Recorder \_\_\_\_\_  Extra Copies \_\_\_\_\_  
 Day Standby \_\_\_\_\_ Sub Total 0  
 Accessibility \_\_\_\_\_ Total 1815.00  
 Sub Total 1815 MP/DST Disc't \_\_\_\_\_

Approved By

Our Representative

Trilobite Testing Inc. shall not be liable for damaged of any kind of the property or personnel of the one for whom a test is made, or for any loss suffered or sustained, directly or indirectly, through the use of its equipment, or its statements or opinion concerning the results of any test, tools lost or damaged in the hole shall be paid for at cost by the party for whom the test is made.



# TRILOBITE TESTING INC.

1515 Commerce Parkway • Hays, Kansas 67601

## Test Ticket

NO. 62083

Well Name & No. Schuette #6-36 Test No. 6 Date 6 NOV 17  
 Company American Warrior Inc. Elevation 1947 KB 1935 GL  
 Address 3118 Cummings Road PO Box 399 Garden City Kansas 67846  
 Co. Rep/Geo. Luke Thompson Rig Duke Rig 2  
 Location: Sec. 36 Twp. 315 Rge. 16W Co. Gomanche State KS

Interval Tested 5075 - 5110 Zone Tested Viola  
 Anchor Length 35 Drill Pipe Run 5073 Mud Wt. 9.3  
 Top Packer Depth 5070 Drill Collars Run — Vis 55  
 Bottom Packer Depth 5075 Wt. Pipe Run — WL 9.4  
 Total Depth 5110 Chlorides 5000 ppm System LCM 6#

Blow Description I.F. Blow built to 6 inches  
I.S.I. No blow back  
F.F. Light surface blow died in 10 minutes  
F.S.I. No blow back

Rec	Feet of	%gas	%oil	%water	%mud
<u>180</u>	<u>Muddy Water</u>			<u>70%</u>	<u>30%</u>
Rec	Feet of	%gas	%oil	%water	%mud
Rec	Feet of	%gas	%oil	%water	%mud
Rec	Feet of	%gas	%oil	%water	%mud
Rec	Feet of	%gas	%oil	%water	%mud

Rec Total 180 BHT 130 Gravity \_\_\_\_\_ API RW 205 @ 57 °F Chlorides 52000 ppm  
 (A) Initial Hydrostatic 2526  Test 1250 T-On Location 9:13 am  
 (B) First Initial Flow 19  Jars 250 T-Started 10:15 am  
 (C) First Final Flow 61  Safety Joint 75 T-Open 11:47 am  
 (D) Initial Shut-In 1757  Circ Sub \_\_\_\_\_ T-Pulled 2:47 pm  
 (E) Second Initial Flow 66  Hourly Standby \_\_\_\_\_ T-Out 5:01 pm  
 (F) Second Final Flow 106  Mileage 120 <sup>90</sup> Comments \_\_\_\_\_  
 (G) Final Shut-In 1712  Sampler \_\_\_\_\_  
 (H) Final Hydrostatic 2456  Straddle \_\_\_\_\_  
 Shale Packer \_\_\_\_\_  
 Extra Packer \_\_\_\_\_  
 Extra Recorder \_\_\_\_\_  
 Day Standby \_\_\_\_\_  
 Accessibility \_\_\_\_\_  
 Sub Total \_\_\_\_\_  
 Ruined Shale Packer \_\_\_\_\_  
 Ruined Packer \_\_\_\_\_  
 Extra Copies \_\_\_\_\_  
 Sub Total \_\_\_\_\_  
 Total \_\_\_\_\_  
 MP/DST Disc't \_\_\_\_\_

Approved By [Signature]

Our Representative [Signature]

Trilobite Testing Inc. shall not be liable for damaged or any kind of the property or personnel of the one for whom a test is made, or for any loss suffered or sustained, directly or indirectly, through the use of its equipment, or its statements or opinion concerning the results of any test, tools lost or damaged in the hole shall be paid for at cost by the party for whom the test is made.