



**TRILOBITE TESTING, INC.**

# DRILL STEM TEST REPORT

Slawson Exploration Comp, Inc  
 204 North Robinson Ave.  
 Ste. 2300  
 Oklahoma OK  
 ATTN: Jeremy Schwartz

**31-8s-33w Thomas Co KS**

**Epard 1-31**

Job Ticket: 64245

**DST#: 2**

Test Start: 2017.11.16 @ 21:36:15

## GENERAL INFORMATION:

Formation: **Marmaton**

Deviated: No Whipstock: ft (KB)

Time Tool Opened: 23:52:15

Time Test Ended: 03:21:30

Test Type: Conventional Bottom Hole (Reset)

Tester: Mike Roberts

Unit No: 81

**Interval: 4486.00 ft (KB) To 4528.00 ft (KB) (TVD)**

Reference Elevations: 3220.00 ft (KB)

Total Depth: 4528.00 ft (KB) (TVD)

3215.00 ft (CF)

Hole Diameter: 7.88 inches Hole Condition: Fair

KB to GR/CF: 5.00 ft

**Serial #: 8672 Inside**

Press@RunDepth: 20.83 psig @ 4523.00 ft (KB)

Capacity: 8000.00 psig

Start Date: 2017.11.16

End Date:

2017.11.17

Last Calib.:

2017.11.17

Start Time: 21:36:15

End Time:

03:21:30

Time On Btm:

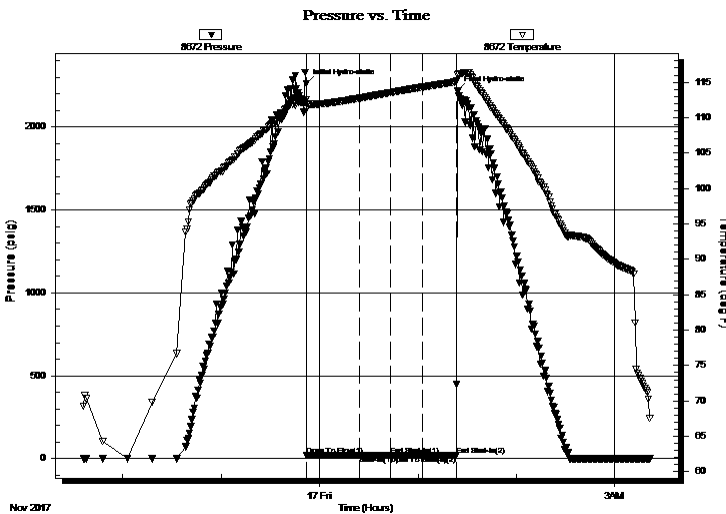
2017.11.16 @ 23:52:00

Time Off Btm:

2017.11.17 @ 01:24:15

TEST COMMENT: IF:30 Built to weak surface blow  
 FF:20 No return blow  
 FS:20 No blow  
 FS:20 No return blow

## PRESSURE SUMMARY



Time (Min.)	Pressure (psig)	Temp (deg F)	Annotation
0	2259.59	112.51	Initial Hydro-static
1	19.76	111.29	Open To Flow (1)
33	20.95	112.74	Shut-In(1)
52	22.88	113.53	End Shut-In(1)
52	21.38	113.54	Open To Flow (2)
71	20.83	114.30	Shut-In(2)
92	22.22	115.05	End Shut-In(2)
93	2216.57	116.06	Final Hydro-static

## Recovery

Length (ft)	Description	Volume (bbl)
2.00	mud 100% m	0.01

## Gas Rates

Choke (inches)	Pressure (psig)	Gas Rate (Mcf/d)

\* Recovery from multiple tests





**TRILOBITE  
TESTING, INC.**

# DRILL STEM TEST REPORT

**FLUID SUMMARY**

Slawson Exploration Comp, Inc

**31-8s-33w Thomas Co KS**

204 North Robinson Ave.  
Ste. 2300  
Oklahoma OK  
ATTN: Jeremy Schwartz

**Epard 1-31**

Job Ticket: 64245

**DST#: 2**

Test Start: 2017.11.16 @ 21:36:15

## Mud and Cushion Information

Mud Type: Gel Chem

Cushion Type:

Oil API:

0 deg API

Mud Weight: 9.00 lb/gal

Cushion Length:

ft

Water Salinity:

0 ppm

Viscosity: 56.00 sec/qt

Cushion Volume:

bbl

Water Loss: 7.59 in<sup>3</sup>

Gas Cushion Type:

Resistivity: 0.00 ohm.m

Gas Cushion Pressure:

psig

Salinity: 900.00 ppm

Filter Cake: 1.00 inches

## Recovery Information

Recovery Table

Length ft	Description	Volume bbl
2.00	mud 100% m	0.010

Total Length: 2.00 ft      Total Volume: 0.010 bbl

Num Fluid Samples: 0

Num Gas Bombs: 0

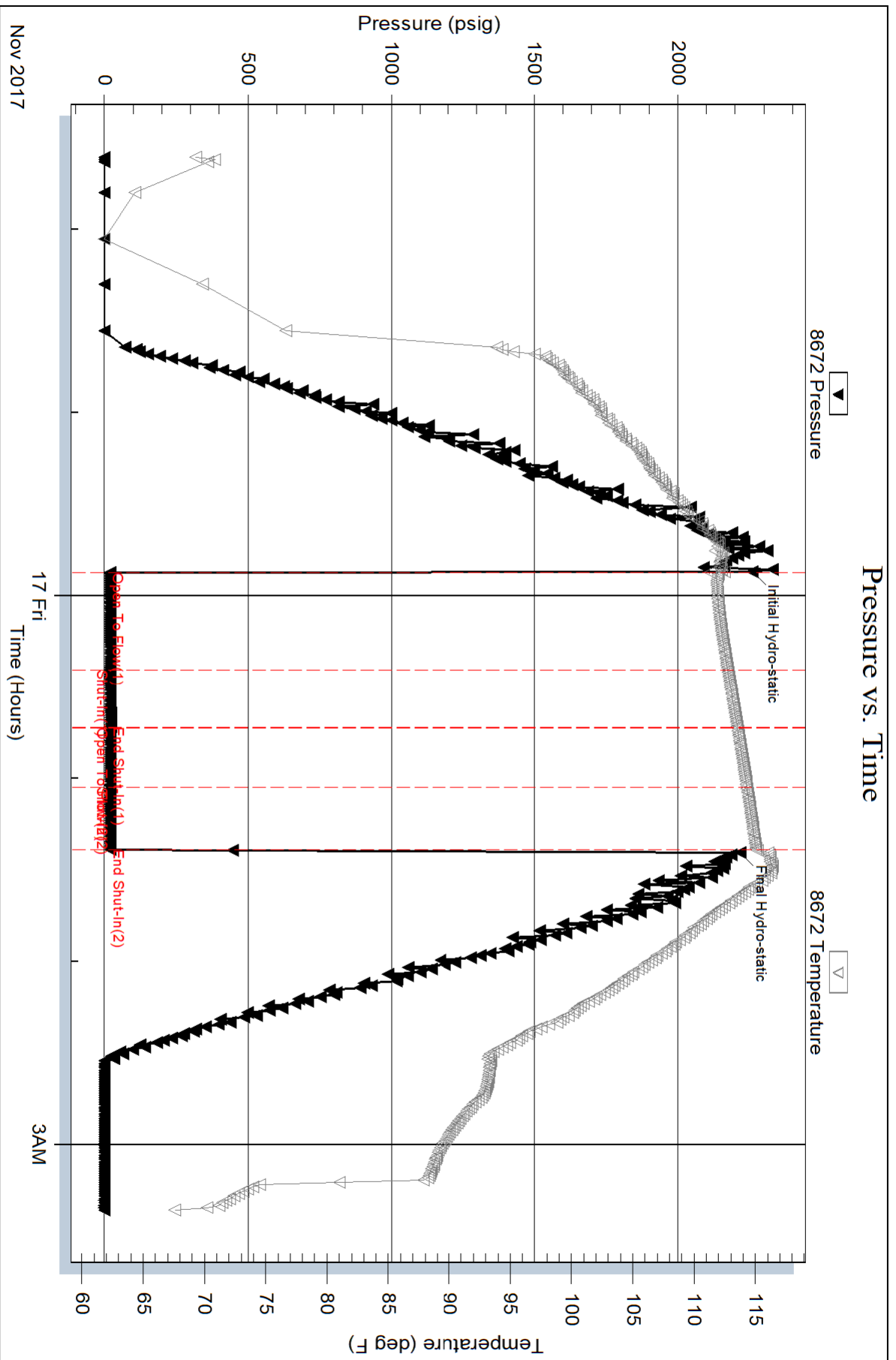
Serial #:

Laboratory Name:

Laboratory Location:

Recovery Comments:

### Pressure vs. Time



Serial #: 8374

Outside

Slaw son Exploration Comp, Inc

Epard 1-31

DST Test Number: 2

