



**TRILOBITE TESTING, INC.**

# DRILL STEM TEST REPORT

Slawson Exploration Comp, Inc  
 204 North Robinson Ave.  
 Ste. 2300  
 Oklahoma OK  
 ATTN: Jeremy Schwartz

**31-8s-33w Thomas Co KS**

**Epard 1-31**

Job Ticket: 64246

**DST#: 3**

Test Start: 2017.11.17 @ 13:06:15

## GENERAL INFORMATION:

Formation: **Marmaton**

Deviated: No Whipstock: ft (KB)

Time Tool Opened: 14:45:30

Time Test Ended: 18:13:00

Test Type: Conventional Bottom Hole (Reset)

Tester: Mike Roberts

Unit No: 81

**Interval: 4527.00 ft (KB) To 4560.00 ft (KB) (TVD)**

Reference Elevations: 3220.00 ft (KB)

Total Depth: 4560.00 ft (KB) (TVD)

3215.00 ft (CF)

Hole Diameter: 7.88 inches Hole Condition: Fair

KB to GR/CF: 5.00 ft

**Serial #: 8672**

**Inside**

Press@RunDepth: 22.21 psig @ 4528.00 ft (KB)

Capacity: 8000.00 psig

Start Date: 2017.11.17

End Date:

2017.11.17

Last Calib.: 2017.11.17

Start Time:

13:06:15

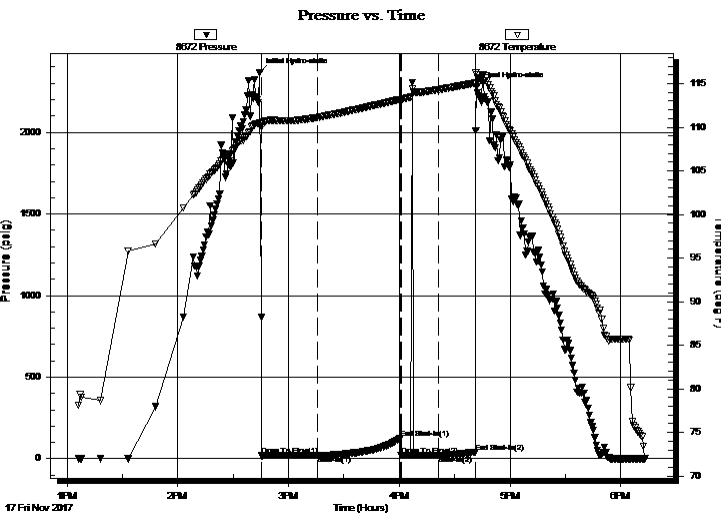
End Time:

18:13:00

Time On Btm: 2017.11.17 @ 14:44:30

Time Off Btm: 2017.11.17 @ 16:42:00

**TEST COMMENT:** IF:30- Built to 1/8" blow  
 IS:45- No return blow  
 FF:20- No blow --- flushed tool-- no blow  
 FS:20- No return blow



## PRESSURE SUMMARY

| Time (Min.) | Pressure (psig) | Temp (deg F) | Annotation           |
|-------------|-----------------|--------------|----------------------|
| 0           | 2367.08         | 110.45       | Initial Hydro-static |
| 1           | 18.88           | 110.07       | Open To Flow (1)     |
| 32          | 20.34           | 111.12       | Shut-In(1)           |
| 77          | 127.52          | 113.20       | End Shut-In(1)       |
| 77          | 19.58           | 113.13       | Open To Flow (2)     |
| 97          | 22.21           | 114.31       | Shut-In(2)           |
| 117         | 41.58           | 115.07       | End Shut-In(2)       |
| 118         | 2280.03         | 116.02       | Final Hydro-static   |

## Recovery

| Length (ft) | Description | Volume (bbl) |
|-------------|-------------|--------------|
| 5.00        | mud 100% m  | 0.02         |
|             |             |              |
|             |             |              |
|             |             |              |
|             |             |              |

\* Recovery from multiple tests

## Gas Rates

| Choke (inches) | Pressure (psig) | Gas Rate (Mcf/d) |
|----------------|-----------------|------------------|
|                |                 |                  |





**TRILOBITE  
TESTING, INC.**

# DRILL STEM TEST REPORT

**FLUID SUMMARY**

Slawson Exploration Comp, Inc

**31-8s-33w Thomas Co KS**

204 North Robinson Ave.  
Ste. 2300  
Oklahoma OK  
ATTN: Jeremy Schwartz

**Epard 1-31**

Job Ticket: 64246

**DST#: 3**

Test Start: 2017.11.17 @ 13:06:15

## Mud and Cushion Information

Mud Type: Gel Chem

Cushion Type:

Oil API:

0 deg API

Mud Weight: 9.00 lb/gal

Cushion Length:

ft

Water Salinity:

0 ppm

Viscosity: 67.00 sec/qt

Cushion Volume:

bbl

Water Loss: 7.19 in<sup>3</sup>

Gas Cushion Type:

Resistivity: 0.00 ohm.m

Gas Cushion Pressure:

psig

Salinity: 1500.00 ppm

Filter Cake: 1.00 inches

## Recovery Information

Recovery Table

| Length<br>ft | Description | Volume<br>bbl |
|--------------|-------------|---------------|
| 5.00         | mud 100%m   | 0.025         |

Total Length: 5.00 ft      Total Volume: 0.025 bbl

Num Fluid Samples: 0

Num Gas Bombs: 0

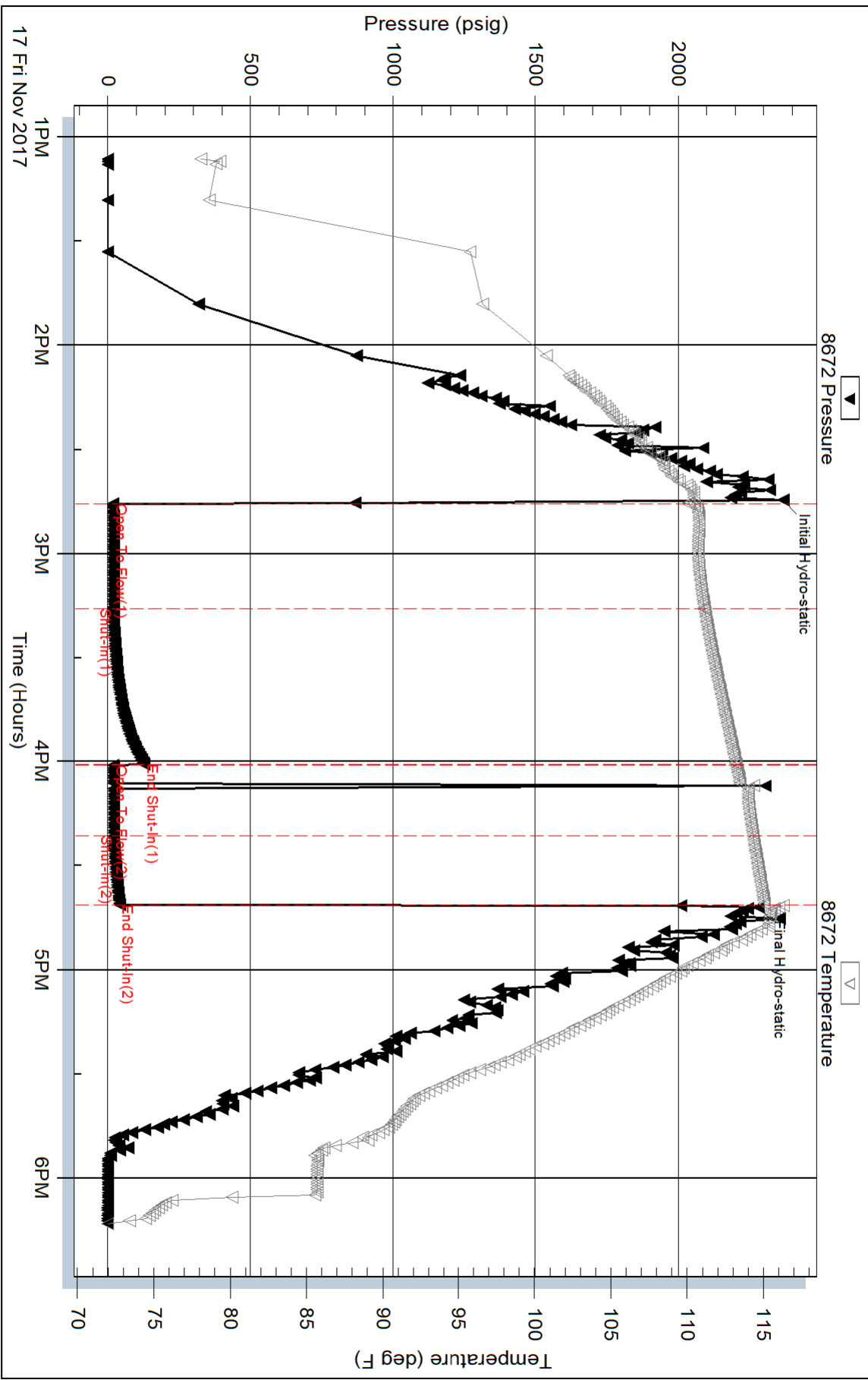
Serial #:

Laboratory Name:

Laboratory Location:

Recovery Comments:

### Pressure vs. Time



Serial #: 8374

Outside

Slaw son Exploration Comp, Inc

Epard 1-31

DST Test Number: 3

### Pressure vs. Time

