



# Fall & Associates

Stake and Elevation Service

P.O. Box 222

Pretty Prairie, KS. 67570

785-243-7506

Date 1-15-18

Invoice Number 0112181

MURFIN DRILLING

1-2

Antholz 'A'

Operator

Number

Farm Name

Cheyenne-KS

2

2s

37w

330'FSL 330'FEL

County-State

S

T

R

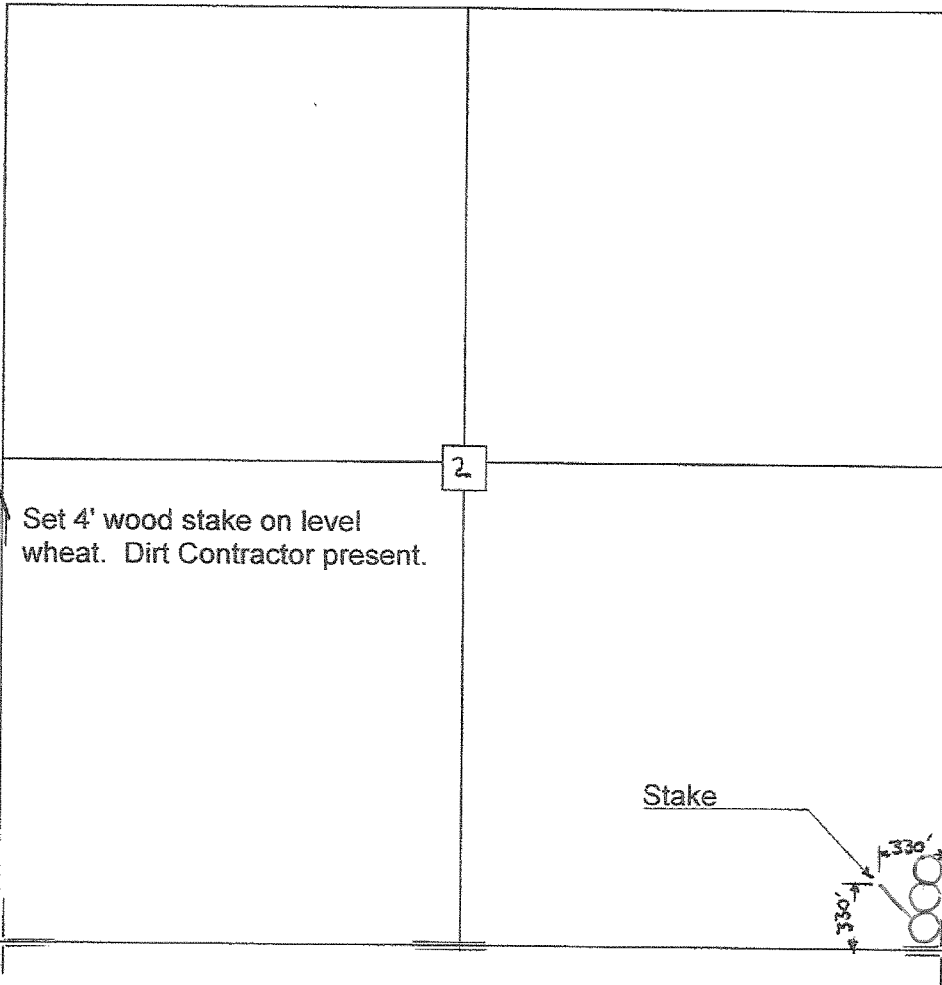
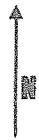
Location

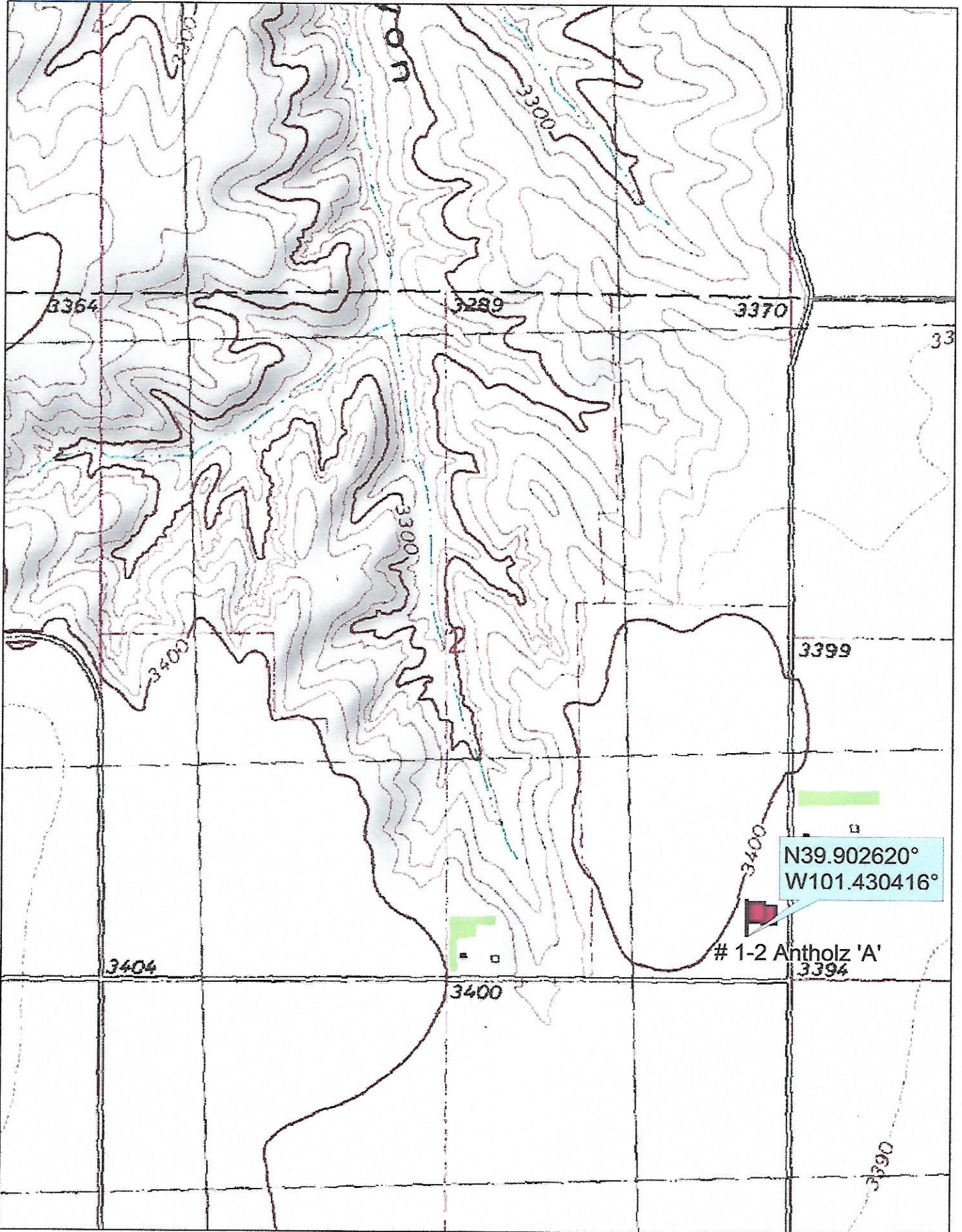
Murfin Drilling  
250 N Water  
Suite 300  
Wichita, KS. 67202

Elevation 3395 Gr

Ordered By: Shauna

Scale 1"=1000'

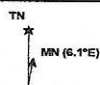




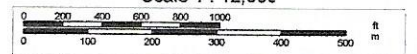
Data use subject to license.

© DeLorme. Topo North America™ 9.

www.delorme.com



Scale 1 : 12,000



1" = 1,000.0 ft

Data Zoom 13-1