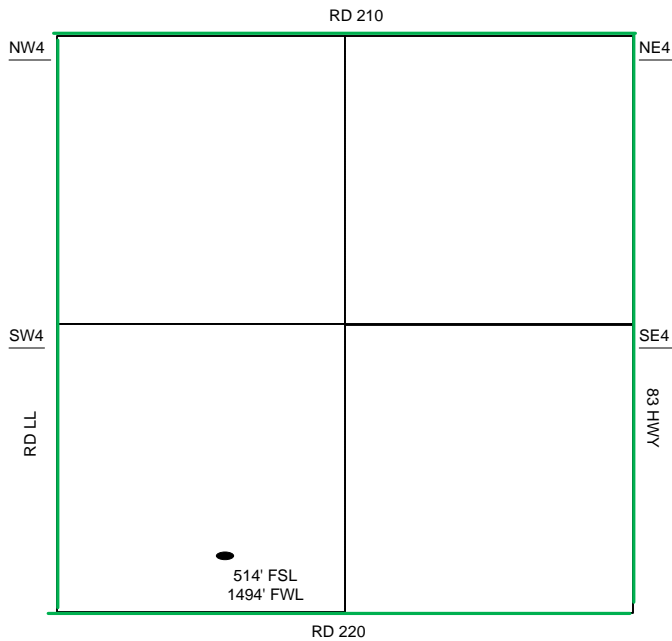
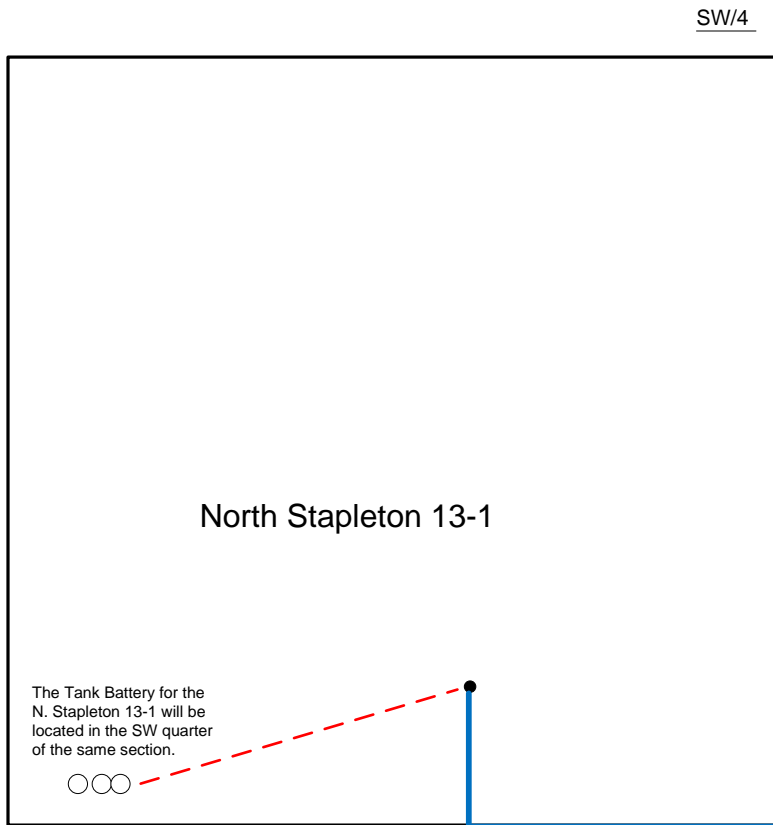


Proposed Plan of Construction

North Stapleton 13-1
Sec 13 T30S-R33W
Haskell County, KS



Sec 13 - T30S - R33W



- Well Location
- Proposed Lease Roads
- - - Proposed Pipeline
- Proposed Tank Battery
- Proposed Power Lines
- - - Existing Pipeline

Proposed Details of
SW/4 Sec 13 - T30S - R33W

Note-Drawing **Not** to Scale