

# LITHOLOGY STRIP LOG

## WellSight Systems

Scale 1:240 (5"=100') Imperial

Measured Depth Log

Well Name: VINCENT OIL CORP. KEOUGH #8-34 NE SW SE NE

API: 15-057-20986-00-00

Location: SEC 34, T28S, R23W, FORD CO. KANSAS

License Number: 5004

Region: Mulberry Creek

Spud Date: 9/28/17

Drilling Completed: 10/11/17

Surface Coordinates: 3,015' FSL, 865' FEL

Bottom Hole

Coordinates:

Ground Elevation (ft): 2,494'

K.B. Elevation (ft): 2,506'

Logged Interval (ft): 4,250' To: 5,335.

Total Depth (ft): 5,335'

Formation: Mississippi

Type of Drilling Fluid: NATIVE MUD TO 3,803'. CHEMICAL GEL TO RTD

Printed by MUD.LOG from WellSight Systems 1-800-447-1534 [www.WellSight.com](http://www.WellSight.com)

### OPERATOR

Company: VINCENT OIL CORP.

Address: 200 W. DOUGLAS AVE #725

WICHITA, KANSAS 67202-3013

OFFICE; 316-262-3573

### GEOLOGIST

Name: Jame R. Hall (Well Site Supervision)

Company: Black Gold Petroleum

Address: 5530 N. Sedgwick

Wichita, Kansas 67204-1828

316-838-2574, 316-217-1223

## Comments

Drilling contractor: Duke Drilling, Rig #1, Tool Pusher; Mike Godfrey.

Surface Casing: 13 3/8" set at 299' with 250sx. 8 5/8" 23# set at 648' with 300sx, cement, did circulate.

### Daily Activity:

9/28/17; Move on and spud @22:00hrs.

9/29/17; 07:00 drilling 12 1/4" hole @ 589'.

9/30/17; 07:00 648' waiting on 17 1/2" bit. Drilled to 648' with 12 1/4" bit, ran 8 5/8" csg and hit bridge @ 211'. pulled 8 5/8" csg. to drill 17 1/2" hole and run 13 3/8" csg.

10/01/17; 07:00 648', drilled 17 1/2" hole to 300', ran 13 3/8" csg, set at 299', cmt with 250sx. Trip in drilled cmt and circulated to clean hole at 648'.

10/02/17; 07:00 1,225' drilling 7 7/8" hole. ran 8 5/8" csg, set at 648' with 300sx, cmt did circulate, wait on cmt 8 hrs, drilled out cmt than drilled ahead with native mud.

10/03/17; 07:00 2,590' drilling ahead with native mud.

10/04/17; 07:00 3,255' drilling ahead with native mud.

10/05/17; 07:00 3,803' drilling ahead displace native mud with chem gel @ 3,803'.

10/06/17; 07:00 4,417' drilling ahead. Cir @ 4,208' Topeka due to gas kick. No show drilled ahead.

10/07/17; 07:00 4,852' drilling.

10/08/17; 07:00 5,095 drilling. Circulated Pawnee @5,041', then made 25std short trip prior to drilling ahead.

10/09/17; 07:00 5,162' DST #1, @ 5,126 bit trip and svy, drilled to 5,162' and circulated. Condition hole trip out (pipe strap 1' deep) and commenced DST #1.

10/10/17; 07:00 drilled to 5,189 and circulate samples. Condition hole trip out and commenced DST #2.

10/11/17; 07:00 5,226' finishing DST #3, 5,216 CFS, 5,226 CFS, run DST #3 5,119' - 5,226' (27').

10/12/17; 07:00 5,335' (RTD), drilled to total depth and run open hole logs. make ready to run 4 1/2" production csg.

Deviation Surveys: 0.25 deg. @ 648', 0.50 deg. @ 2,698',  
1.0 deg. @ 5,126', 0.75 deg. @ 5,335'.

### Bit Record:

#1 12 1/4" DR16 out @ 648'.

#2 17 1/2" out @ 300'.

#3 7 7/8" HE-29 in @ 648' out @ 5,126' (4,478' in 132.25hrs.)

#4 7 7/8" HA-28 (RR) in @ 5,126' out @ 5,335' (109' in 12.5hrs.)

Drilling time commenced: @ 4,200'. Maximum 10' wet and dry samples commenced: @ 4,208' to RTD. Samples delivered to Kansas Geological Sample Library at Wichita, Kansas.

Gas Detector: Blue Stem unit #5258. Digital Unit, commenced @ 4,200'.

Mud System: Mud-Co/Service Mud. Chemical Gel system @ 3,803', Mud Engineer: Justen Whiting (Dodge City Office).

Open Hole Testing; Trilobite Testing Chris Hagman.

Open Hole Logs: ELI Logging, Hays Kansas,

Logging Engineer: Jeff Luebbers.

DIL, CDL/CNL/PE, MEL/SON.

Sample tops are placed on this Plotted Geo. Report, with the reference wells "A" Vincent Oil Corp. Keough #1-34 SW NW NW 34-T28S-R23W, and "B" Vincent Oil Corp. Keough #7-34 NE NE NE SW 34-T28S-R23W, "C" Vincent Oil Corp. Hitz #1-35 35-T28S-R23W. E-log tops datum differences shown.

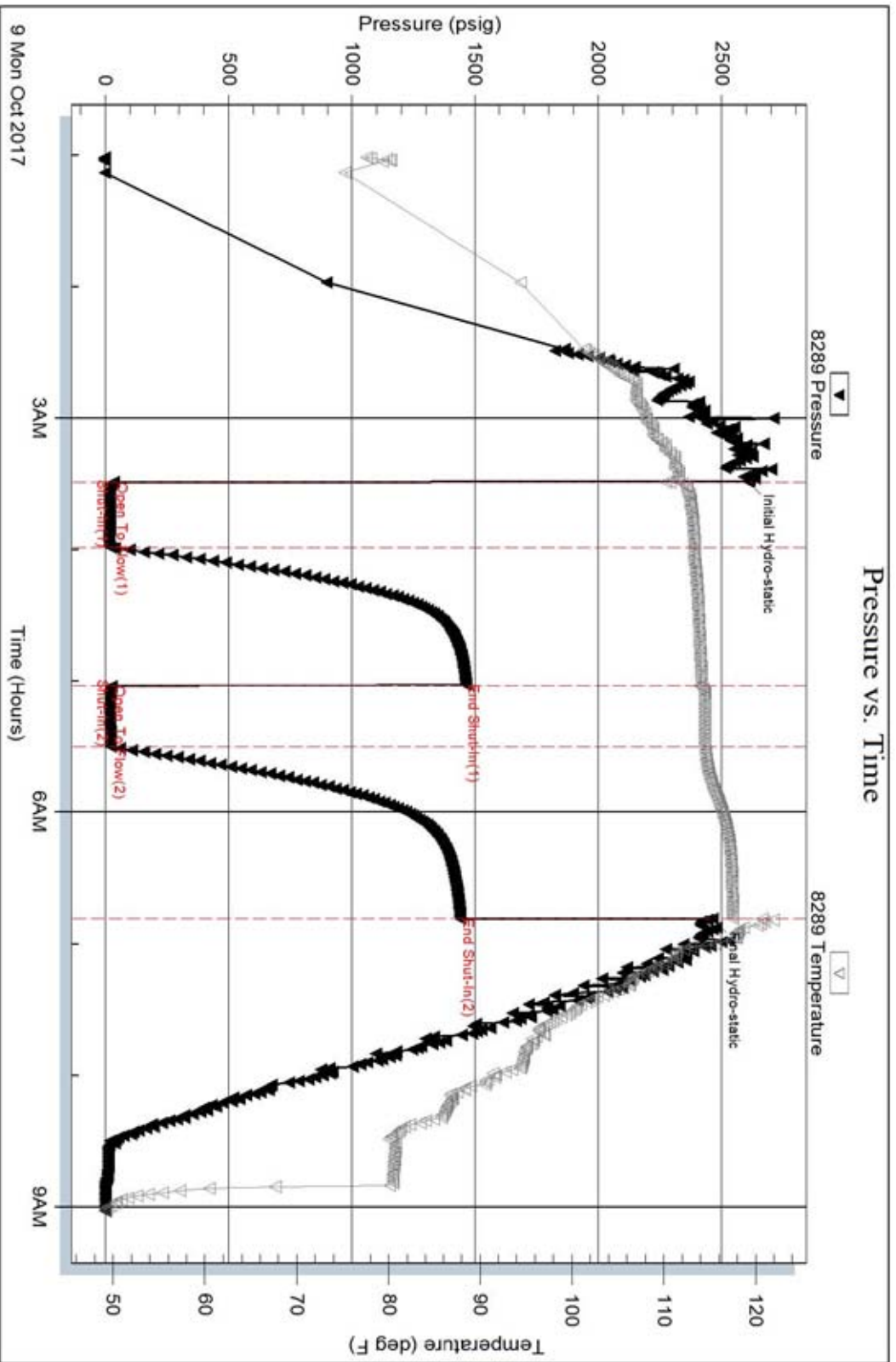
This log must be shifted by 1' to 2' for correlation purposes with the open hole E-logs. Open hole E-log depth was 5,338'.

Serial #: 8289

Inside Vincent Oil Corp.

Keough 8-34

DST Test Number: 1



Triobite Testing, Inc

Ref. No: 59469

Printed: 2017.10.09 @ 09:56:07

Serial #: 8289

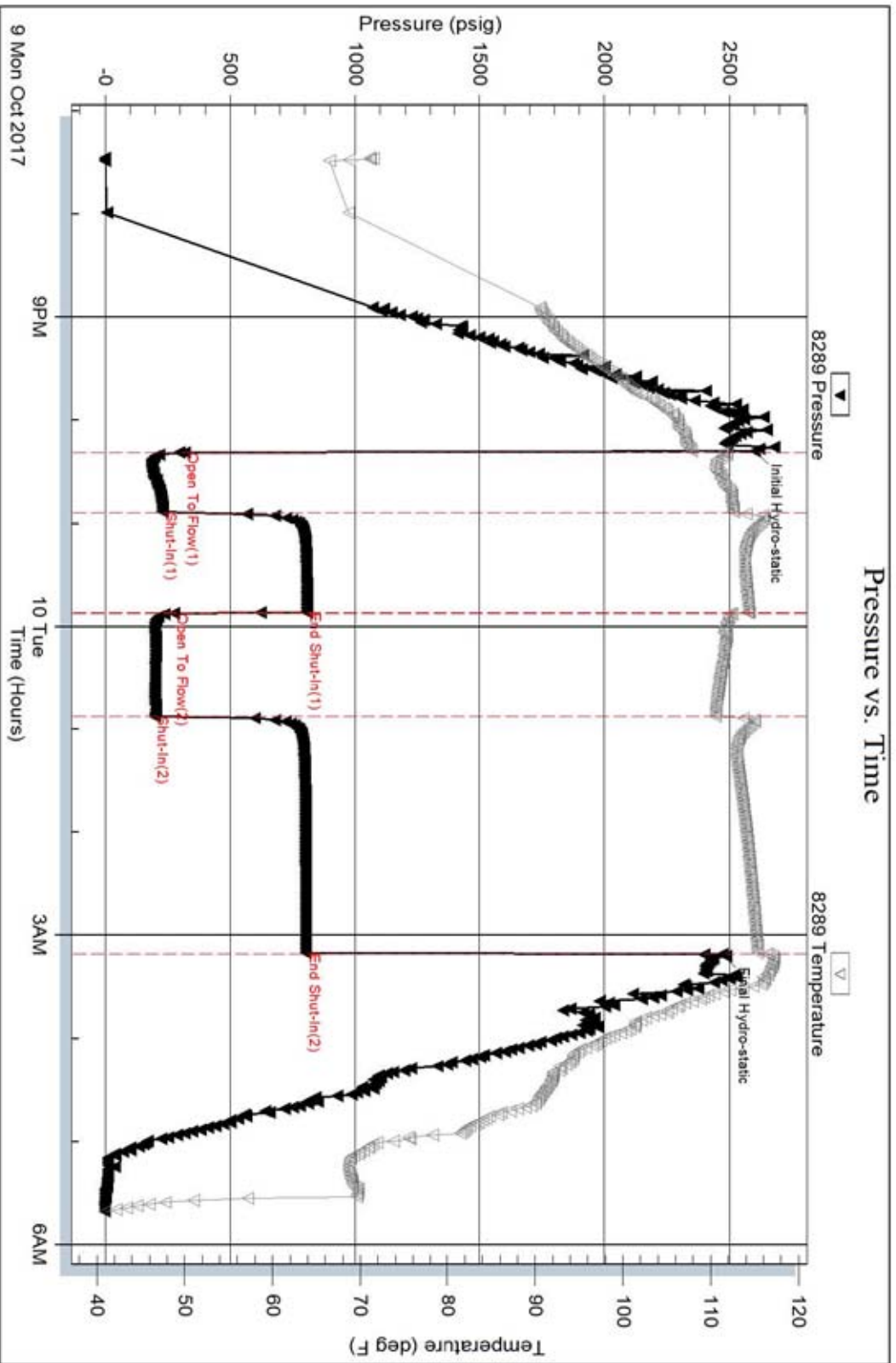
Inside

Vincent Oil Corp.

Keough 8-34

DST Test Number: 2

### Pressure vs. Time



Triobite Testing, Inc

Ref. No: 59470

Printed: 2017.10.10 @ 07:32:20

Serial #: 8289

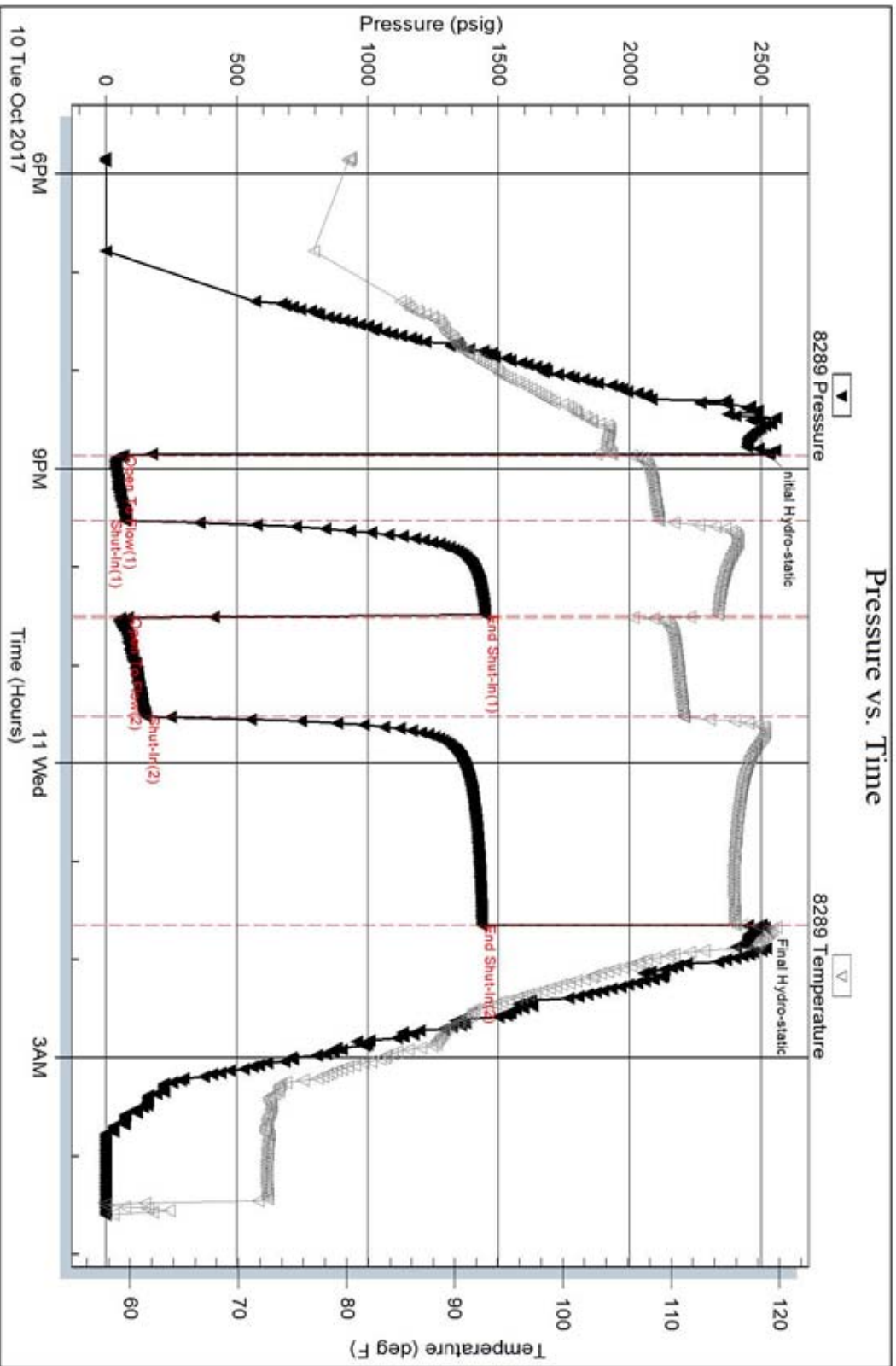
Inside

Vincent Oil Corp.

Keough 8-34

DST Test Number: 3

### Pressure vs. Time



## DSTs

**DST #1** Base Penn 5,139' 5,162' (23'), 30-60-30-60, IH 2606#, IF 35-23# BOB 4min (strong steady) ISI 1464# (no blow), FF 25-22# BOB when open (strong steady), FSI 1442# (no blow), FH 2464#, Rec; 30' gassy mud (15%gas, 85%mud), 248' gas in pipe. BHT 11

**DST #2** Morrow 5,175' - 5,189' (14'), 30-60-60-120, IH 2601#, IF 318-231# BOB GTS 2min, (10' 379mcf, 20' 492mcf, 30' 547mcf), ISI 808# (no blow), FF 275-198# BOB GTS imd, (10' 488mcf, 20' 536mcf, 30' 549mcf, 40' 549mcf, 50' 549mcf, 60' 549mcf), FSI 805# (no blow), FH 2472#, Rec; 15' gassy mud (5%gas, 95%mud), BHT 115F

**DST #3** Miss. 5,199' - 5,226' (27'), 40-60-60-120, IH 2528#, IF 67-73# BOB 30sec, GTS 20min, (20' 7mcf 30' 11mcf, 40' 11mcf,) ISI 1449# no blow, FF 84-154#, BOB GTS imd, (10' 14mcf, 20' 15mcf, 30' 18mcf, 40' 18mcf, 50' 18mcf, 60' 18mcf), Rec; 30' gasy oily mud (5%gas, 15%oil, 80%mud), 220' gasy oil (20%gas, 80%oil), FSI 1438# blow back in 30sec, weak surface blow, FH 2502#, BHT 116F, Oil 32deg.


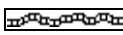
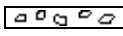
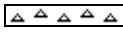
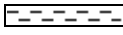

## Qualifiers


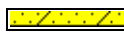




### CARBONATE CLASSIFICATION:


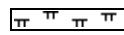

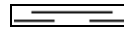


**AFTER DUNHAM:** **GRAIN;** any fossil, fossil fragment, sand grain, or other rock fragment within the rock. **MUDSTONE;** muddy carbonate rocks containing less than 10% grains. **WACKESTONE;** mud supported carbonate rocks with more than 10% grains. **PACKSTONE;** grain supported muddy carbonate rocks. **GRAINSTONE;** mud free carbonate rock, grain supported. **BOUNDSTONE;** carbonate rock bound together at deposition (coral, etc.). **CRYSTALLINE CARBONATE;** carbonate rock retaining to little of their depositional texture to be classified.






Qualifiers; (Fossils, Minerals, Shows, Porosity, etc.) Rare = less than 1% of sample total, Trace = less than 5% of sample total, Greater than 5% an estimate of total percentage.

## ROCK TYPES

	Anhy
	Bent
	Brec
	Cht
	Clyst
	Coal

	Congl
	Sdy dolo
	Shy dolo
	Dol
	Gyp
	Sdy lmst

	Lmst
	Mrlst
	Salt
	Shale
	Sltst
	Ss

	Black sh
	Gry sh
	Shale
	Shyslts
	Slysh

### ACCESSORIES

### MINERAL

- Anhy
- Arg
- Bent
- Bit
- Brecfrag
- Calc
- Carb
- Chtdk
- Chtlt
- Dol
- Ferrpel
- Ferr
- Glau
- Gyp
- Marl
- Nodule
- Phos
- Pyr
- Salt
- Sandy
- Silt

- Chlorite
- Dol
- Sand
- Silty

### FOSSIL

- Algae
- Amph
- Belm
- Bioclst
- Brach
- Bryozoa
- Cephal
- Coral
- Crin
- Echin
- Fish
- Foram
- Fossil
- Gastro
- Oolite
- Ostra

- Pelec
- Peloidal
- Pisolite
- Plant
- Strom
- Fuss
- Oomoldic

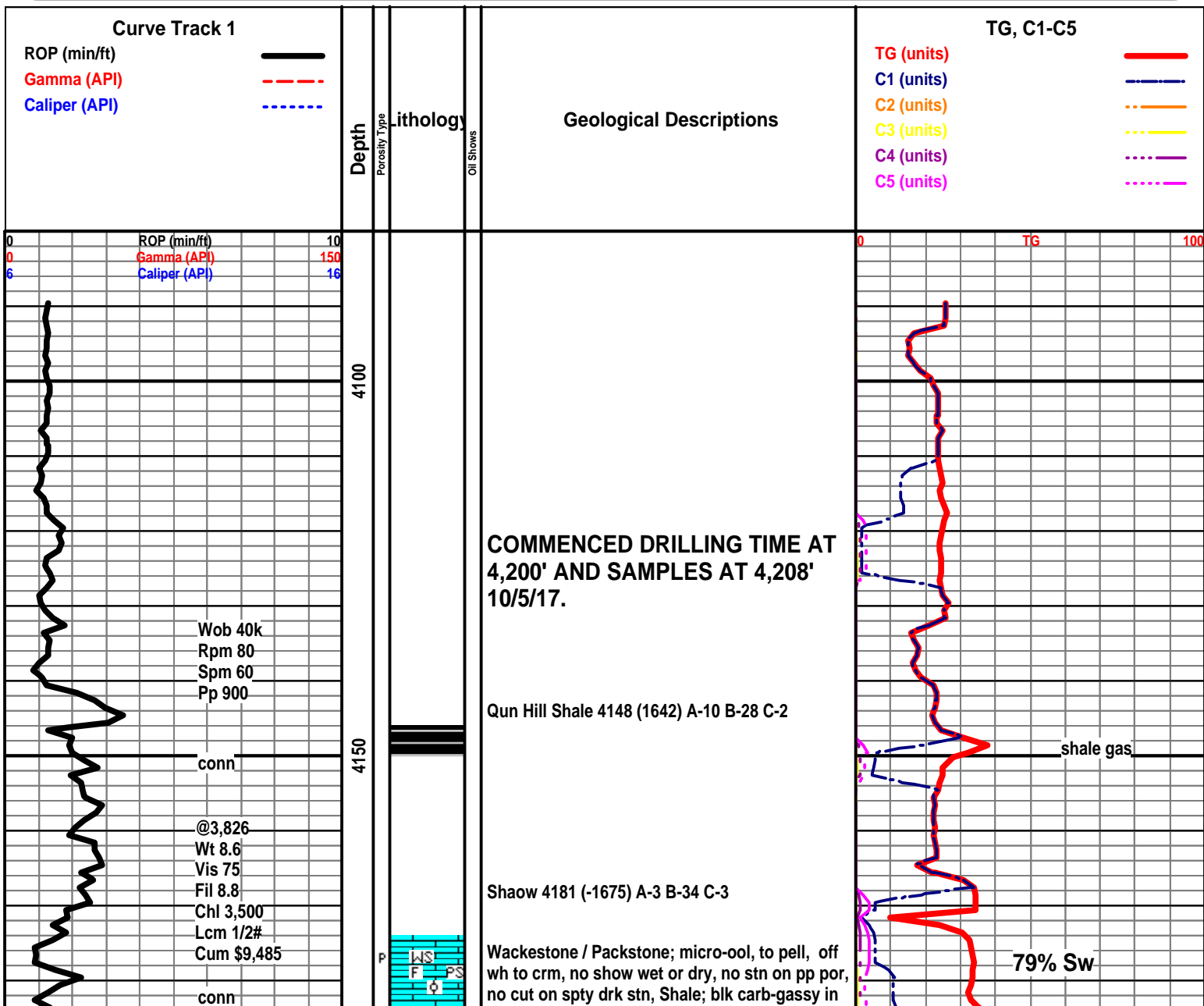
- Grysh
- Gryslt
- Lms
- Sandylms
- Sh
- Sltstn

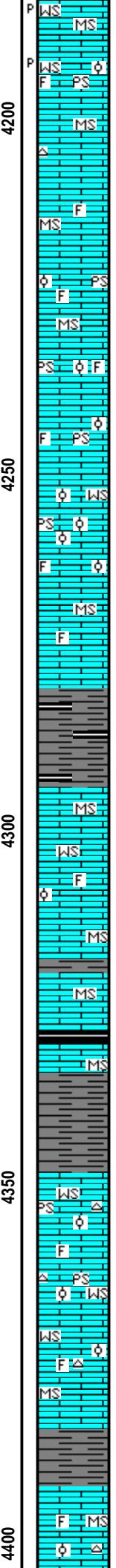
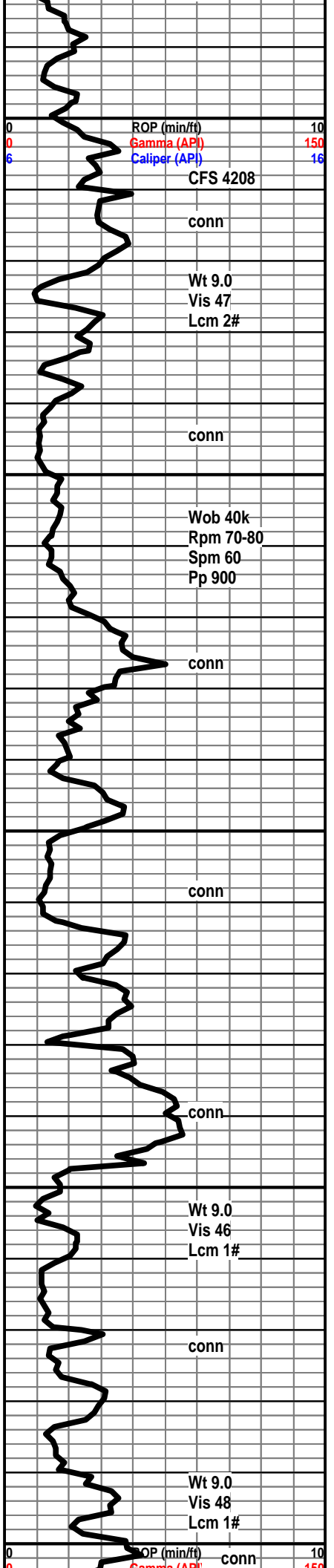
### STRINGER

- Anhy
- Arg
- Bent
- Coal
- Dol
- Gyp
- Ls
- Mrst
- Sltstrg
- Ssstrg
- Carbsh
- Clystn
- Dol

### TEXTURE

- Boundst
- Chalky
- Cryxln
- Earthy
- Finexln
- Grainst
- Lithogr
- Microxln
- Mudst
- Packst
- Wackest





sample from above

Wackestone / Packstone; aa above chky to crystalline text. no show wet or dry, aa approx 15% por.

Mudstone; tan, gry, hrd, rare free pyr.

Mudstone / Wackestone; lt gry, crm, hrd, sm foss dense looking wet, slky-chky text, 10% shale red, blk-gssy cave.

Packstone; crm, off wh, mic-ool, pell, hrd to sft, vis por in dry, no show.

Mudstone; gry, hrd blk.

Packstone / Wackestone; off wh, crm, mic-ool hrd to sft, no cut or show in wet or dry sample, rare spty stn, no cut scat vis por in dry-no stn

AA

Mudstone; gry, buff to tan, hrd, sm foss frag.

Shale; gry, drk gry, 20% blk-carb, sft to frm no vis gas when broken

Mudstone; crm, tan, hrd, dns.

Wackestone; off wh, buff-crm, foss, mic-ool, most hard, rare 2nd calc, no show wet or dry, 10% - 20% shale aa-cave.

**Heebner 4328 (-1822) A-5 B-8 C+1**

Shale; blk-carb, most sft, no vis gas.

Shale; gry, gry-grn, blk.

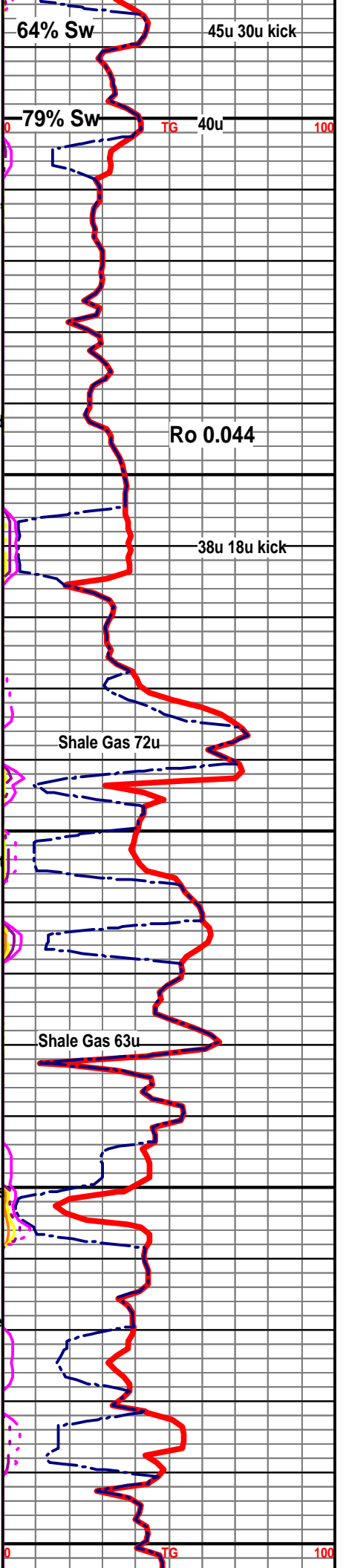
Wackestone / Packstone; crm, tan, hard-britt, foss to mic-ool, barren pp por in dry no stn, rare free chert.

Wackestone / Packstone; off wh, hrd-britt, foss, mic-ool, rare pp and vgy por in dry, no show. rare free chert.

Mudstone; hrd, dnse, rare free wh chert.

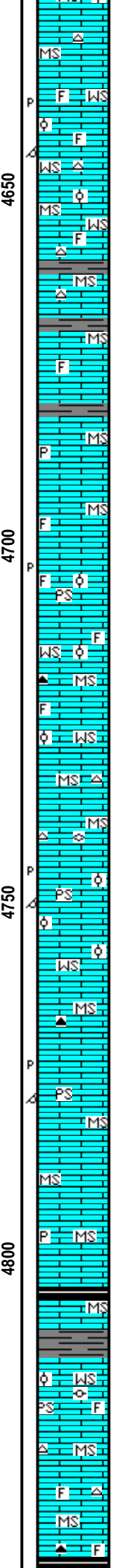
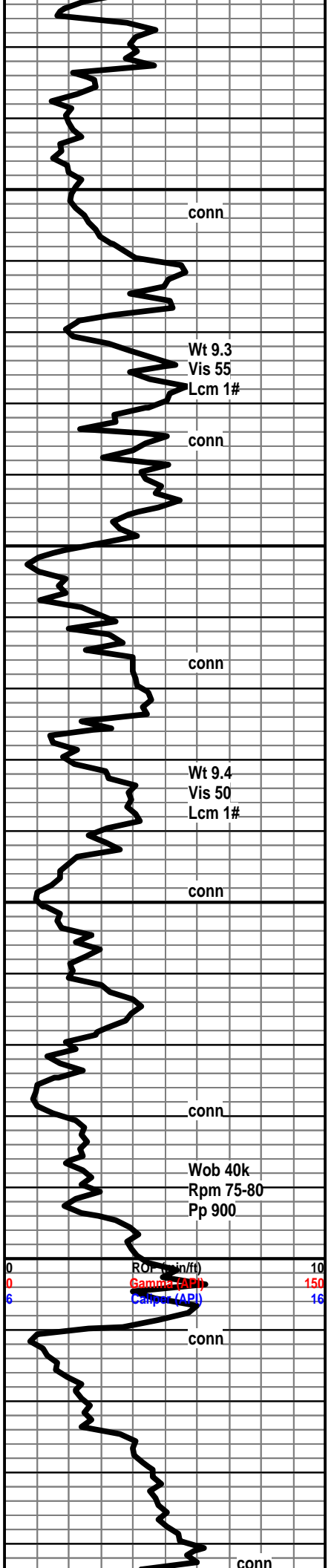
Shale; gry-blk sft - hrd.

Mudstone; gry, tan, hrd, mic-ool some foss, no show.









por in dry, rare free chert

Mudstone; crm, brn, chky to silky text, dns.

Wackestone; crm, tan, hrd to sft, chky to silky tex mic-ool to mic-foss, rare brn mic-pp and mic-oom looking por, no show.

Mudstone / Wackestone; aa, min flour only, free gry chert, rare brk brn mdstn silky text.

Mudstone; crm tan, gry, hrd-sft, free lt gry chert.

Shale; sl increase in % here, gry gry-gry.

Mudstone; crm, tan, sm brn, sm mic-foss, rare 2nd calc.

Mudstone; crm tan to off wh, rare pyr inclusions, dns looking wet and dry.

Packstone; crm, off wh, mic-ool, to fine-ool, most in chky mtrx, no show

Mudstone; crm, gry, hrd, sm foss, rare dark free blk chert.

Wackestone / Packstone; crm, off wh, sm tan, mic-ool to mic-foss, no show as above mineral fluor only.

Mudstone; crm, gry, fus frag, free chert.

Packstone; crm, gry, britt to hrd, mic-ool to fine ool, occ med-ool, most silky mtrx, no show, no cut on sel samples, brn por in dry sample no show.

Mudstone; crm, tan, gry, rare free drk brn chert.

Packstone; tan, crm, britt, mic-ool to fine-ool, rare med foss frag, chky to silky mtrx, no show.

Mudstone; crm, tan, occ brn, chky-silky text, dns look wet, rare free pyrite in sample tray.

**Stark Sh 4,806 (-2300) A-5 B-3 C+10**

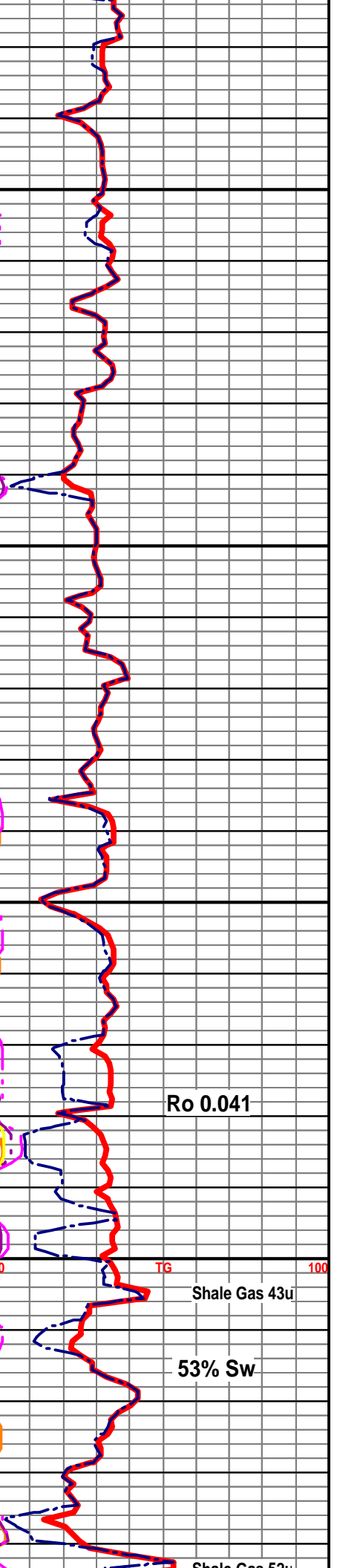
Shale; blk-gssy.

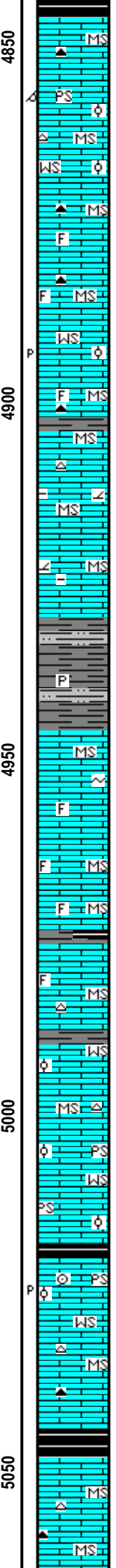
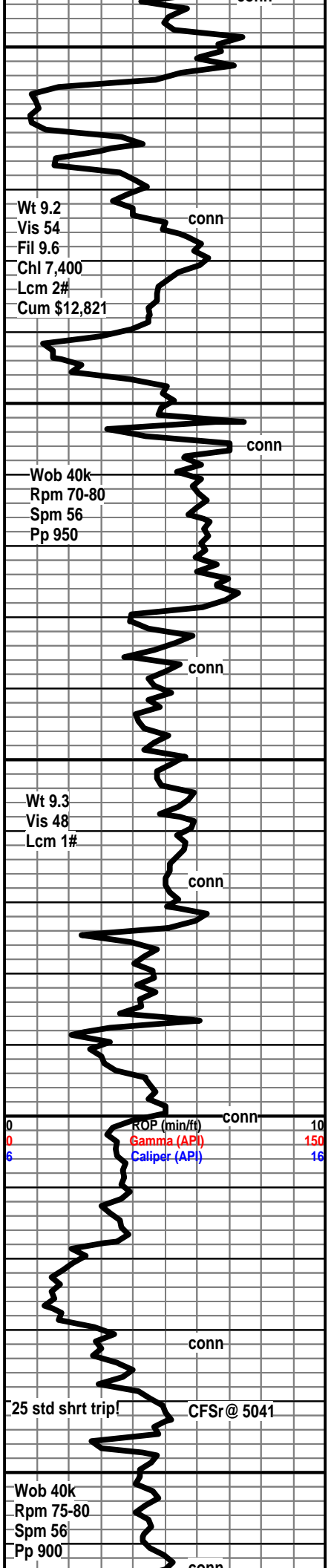
Shale; gry, gry-grn, blk, sm mott, plty-sft.

Wackestone / Packstone; off wh, tan, mic-ool, mic-foss, rare pell, sm fine-ool, no show.

Mudstone; off wh, gry, some brn, hrd, rare free colored chert, some spicular.

**Hushp. Sh 4,844 (-2328) A-5 B+1 C+7**





Shale; blk-carb, gsy when broken

Mudstone; crm, brn, rare free dk brn chert.

Packstone; crm tan, britt, fine-ool to lrg-ool, silky-luster mtrx, vis oom por, no cut, no odor, no show.

Wackestone; crm, tan, mic-ool, chky to silky luster, sm foss frag in mtrx, no show.

Mudstone; crm, buff, hrd, most silky luster, rare wh mott chert.

Mudstone; aa trace blk blkly chert, some foss.

Wackestone; crm, tan, mic-ool, chky to silky luster, sm foss frag in mtrx, no show.

Mudstone; crm gry, hrd, some foss, chert aa.

Mudstone; gry, drk gry, hrd, chky text, blkly, dolo to argil, some drk brn, silky text, dns, rare free chert.

Mudstone; most as above chky to mxln, samples starting to wash gry.

Shale; gry, drk gry, gry-grn, most plty, some rthy-very sft, rare vf-pyr inclusions, sm slty.

**Marmaton 4946 (-2440) A-3 B-24 C even**

Mudstone; crm, gry to tan, dns-hrd, silky-xln, some off wh, chky-sft to britt, rare glauc in mtrx, some are mic-foss.

Mudstone; crm, tan, xln-dns silky, sm chky, sme mic-foss, aa min-fluor only.

Shale; blk-carb, some mott grn, gry-grn, most sft.

Mudstone; crm, brn, xln-chky, dns, sm mic-foss, rare free tan chert.

Mudstone / Wackestone; crm, gry, hrd-britt, chky-xln mtrx, mic-ool, no show.

Wackestone / Packstone; crm, mic-ool to med-ool in xln mtrx, sm foss frag, no show.

**Pawnee 5021 (-2515) A even B-10 C+2**

Shale; blk-carb, gassy

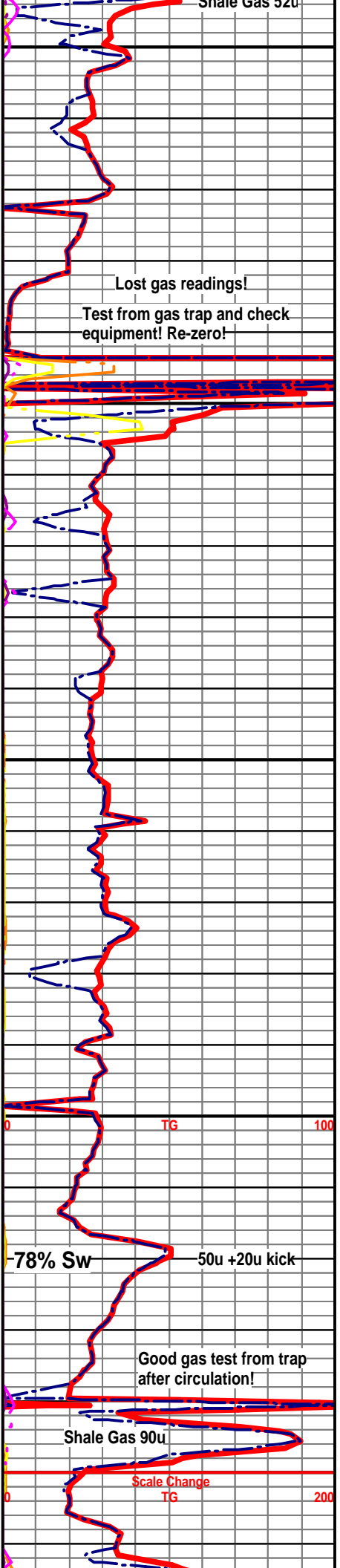
Wackestone / Packstone; crm, tan off off wh, mic-ool, to rare fine-ool, chky-xln mtrx, hrd-britt, no por or show in wet, rare brn pp por in dry-no stn, no odor, no cut.

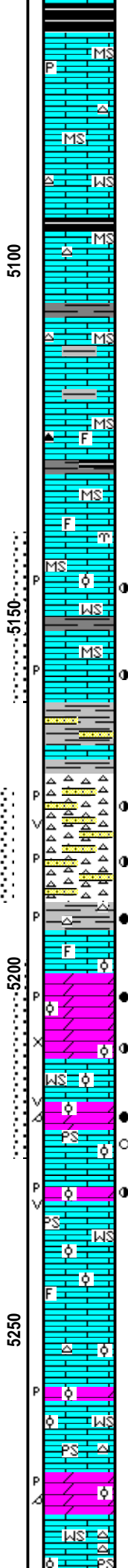
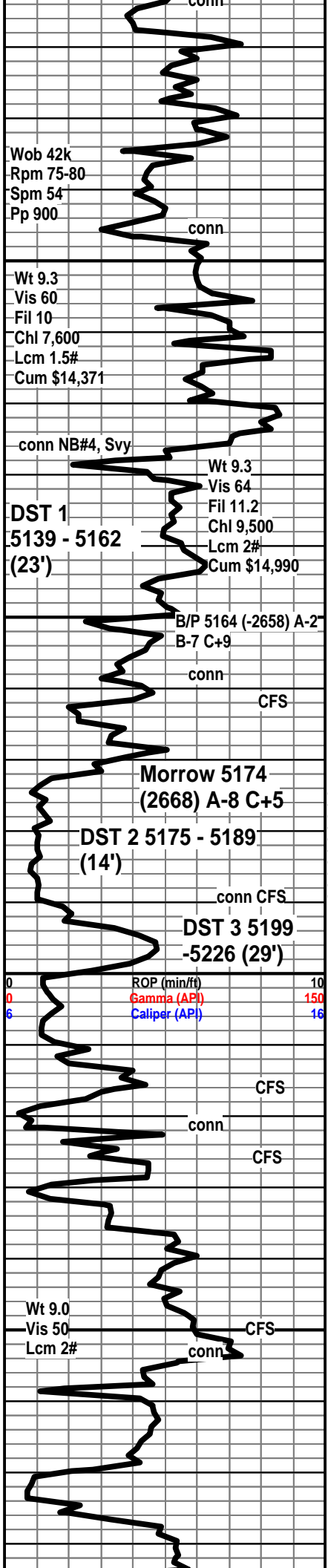
Mudstone; crm, tan sm off wh, rare free tan lt brn chert, sm foss.

**Lab. SH 5045 (-2539) A even B-8 C+3**

Mudstone; crm, tan, inc gry, most hrd, chky-xln, dns, rare free lt and drk chert, sample quality fair after short trip.

**CKE 5005 (-2550) A-1 B-7 C**





**CKE 5065 (-2559) A+1 B-7 C+**

Mudstone; crm, gry to buff, hrd, chky-xln, much blk gssy shale here, rare free pyr and wh to opq chert.

Mudstone; aa, small % inc Wackestone; tan, gry-buff, hrd, xln mtrx, mic-ool, tight, no show.

Mudstone; crm, tan, gry, hrd, rare mott free chert, influx of hrd blk carb shales.

Mix mudstones and some Wackestone as above, % inc in mouse gry sft shales cave?

Mudstone and some Wackestone as above crm, tan, gry, hrd, xln-chky, some mic-ool Wackestone aa, no show tight, shale aa.

Mudstone; crm, tan, gry, most hrd, chky-xln, sm Wkstn with mic-foss no show. shale 20% lt gry, drk gry, sm blk, sm mott, inc shale % with depth.

Mudstone; aa, sm off wh-chky, less% shale here, rare bryzo no cut, no show.

Mudstone; aa, trace Wackestone mic-ool, 1 sample w/spty stn on pp por, inst cut.

Mudstone; crm, gry, sm off wh, hrd-britt, xln - chky, trace to 5% brt fluor in cir samples, only 5 samples with fast to slow cut on rare vis pp & wormy por, rare poor stn, no odor, no oil.

Sh; vry color. SS; rare lt gry, drk spty stn, cut.

60 min 20% sample chert, vc, most fresh, blk, appr. 5% of chert has spty lt brn stn on withrd edges and occ pp por, dull gold fluor, inst brt cut, no vis oil, no odor, SS; rare lt gry, fg, vfg, wlcons, wlsrtd, spty blk stn, inst cut on dull gold fluor, much shale in samples. 90min; 50% chert, 2% with show aa, rare sand clusters aa, 120min; aa with only rare show in tray.

**Miss 5194 (-2688) Aevn B-19 C+14**

Mudstone / Wackestone; crm, off wh, sm mic-ool, NS.

Dolomite; lt gry, buff, hrd to friable, sm grty text, sm vfsuc, chky mtrx, most brn of show, 2% sample w/show, bleed oil, sm rainbow wh/brkn, spty to even oil stn, fvln to pp por, por spty to even on some pcs, good odor, sm free oil in try, some mic-ool dolo.

Dolomite; 25% / 35% lt gry, tan, most hrd, mic-ool to med-ool look, vgy to oom por with bleeding brn oil, bld gas bub, fair odor.

Packstone / Wackestone; off wh, crm, chky-sft, frm-sft, mic-ool to fn-ool, fluor cut, no vis gas or oil, fair sample odor aa.

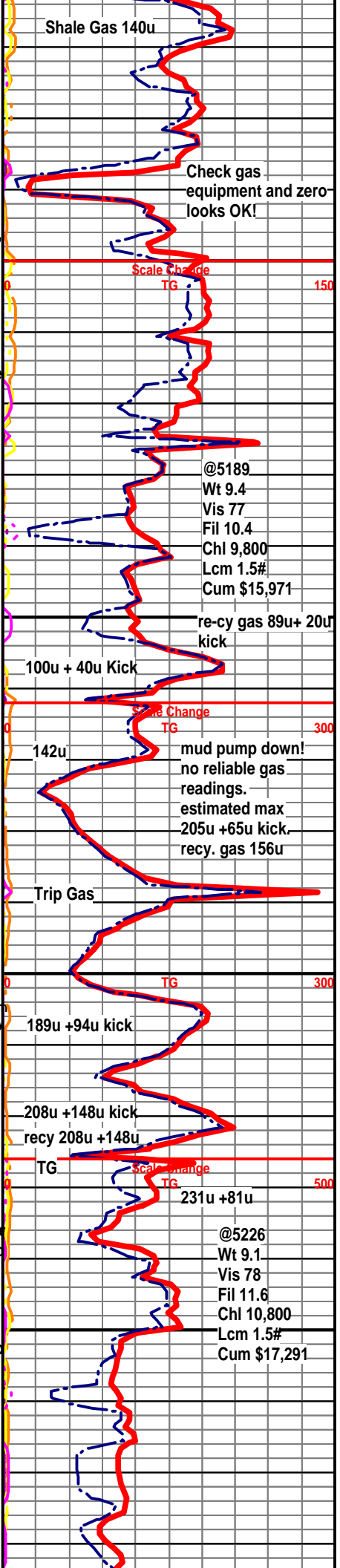
Dolomite; crm, tan gry, most hrd, suc, barren, rare vis spty small pp & vgy por with bleeding gas and rainbow to rare oil droplets, very faint odor.

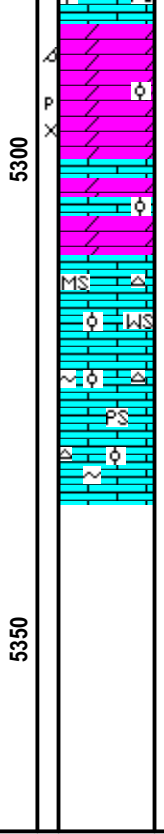
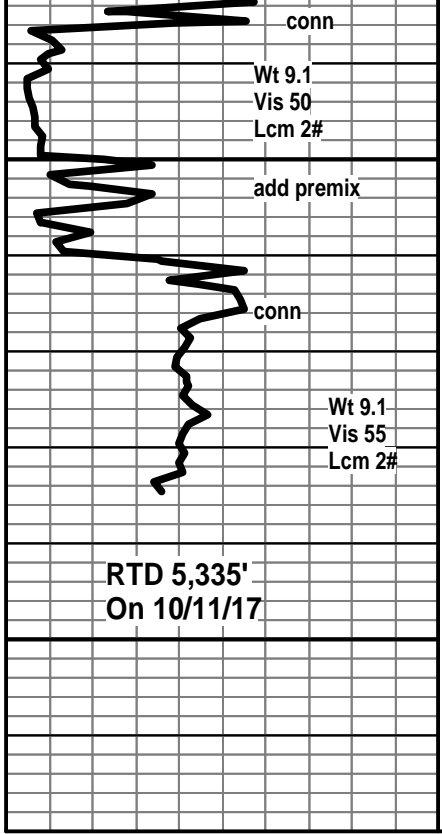
Wackestone / Packstone; crm-buff, sm off wh, hrd-britt, sm sft, mic-ool, med-ool in chky mtrx no show, free chert.

Wackestone / Packstone; crm, off wh, hrd-sft, mic-ool, med-ool in chky mtrx no show, free chert, some ool.

Dolomite; buff, gry, hrd, suc to mic-ool, vis pp an occ oom por, no show.

Wackestone / Packstone; crm, off wh, hrd to sft, mic-ool to med-ool, in chky mtrx, free chert.





mic-ool to med-ool, in chky mtrx, free chert

Dolomite; buff gry, some tan, hrd to vry-hrd, sucrosic to vf-xln, some mic-ool, barren pp, occ vgy por.

Dolomite & Limestone aa no real change here.

Mudstone / Wackestone; crm, buff, hrd, most chky some xln-silky, dns, some mic-ool in chky mtrx, free off white to gry chert.

Wackestone / Packstone; most aa, increase in crm to off wh, mic-ool in a chky mtrx, 2pcs with rare glauconite, no show, rare free chert as above.

