

Geologic Report

Drilling Time and Sample Log

Operator American Warrior, Inc.		KB Elevation 2222'
Lease CAH Unit No. 1		DF 2214'
API # 15-135-25977-0000		GL Casing Record 8 5/8" @ 211'
Field Bondurant		Production 5 1/2" @ 4374'
Location 2550' FNL & 100' FEL		Electrical Surveys None
Sec. 1	Twp. 20s	Rge. 22w
County Ness	State Kansas	

Formation	Log Tops	Sample Tops	Struct Comp
Anhydrite		1432' +790	FL
Base		1466' +756	
Heebner		3699' -1477	+1
Lansing		3749' -1527	FL
BKC		4072' -1850	
Pawnee		4185' -1963	+3
Fort Scott		4265' -2043	+2
Cherokee		4289' -2067	+2
Mississippian		4361' -2139	+27
Total Depth		4374' -2152	

Reference Well For Structural Comparison **American Warrior, Inc. Albers-Cox #1**
2050' FNL & 100' FWL Sec. 23 T20s R22w Ness County, Kansas

Drilling Contractor	Discovery Drilling, Inc.	Rig #4
Commenced	11-22-2017	Completed 11-29-2017
Samples Saved From	3950'	To RTD
Drilling Time Kept From	3650'	To RTD
Samples Examined From	3950'	To RTD
Geological Supervision From	3950'	To RTD

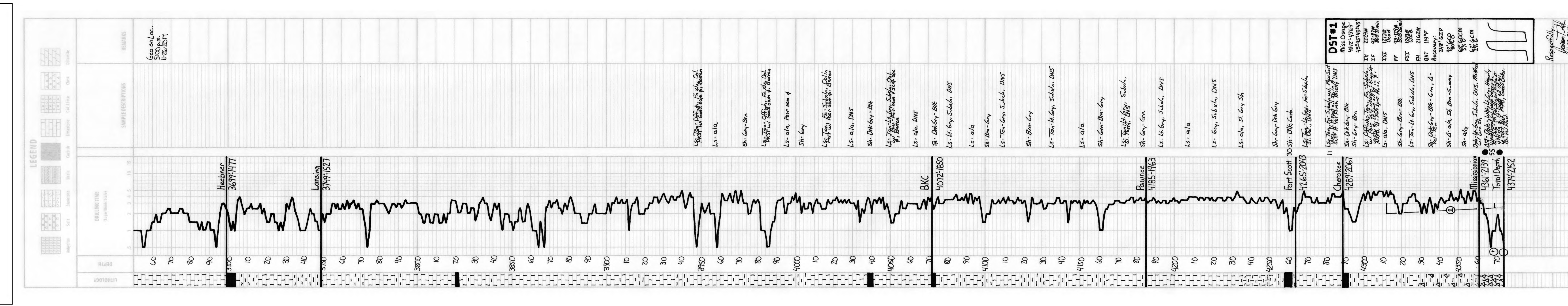
Displacement 3400' Mud Type Chemical

Summary and Recommendations

The location for the CAH Unit #1 well was found via 3-D seismic survey. The new well ran structurally as expected via the survey. One Drill Stem Test was conducted which recovered commercial amounts of oil from the Mississippian Osage Formation. After all gathered data had been examined the decision was made to run 5 1/2 inch production casing to further evaluate the CAH Unit #1 well.

Respectfully Submitted,

Jason T Alm
Hard Rock Consulting, Inc.



DST #1	
Miss Osage	4312-4369'
TH	2224#
IF	4803#
IS	1273#
FF	9812#
FS	1243#
FH	2162#
BHT	1149'
Recovery:	248' GIP
	98% G
	64' GOCM
	54' GCM
	2% G

Respectfully,
Jason T Alm
11-29-2017