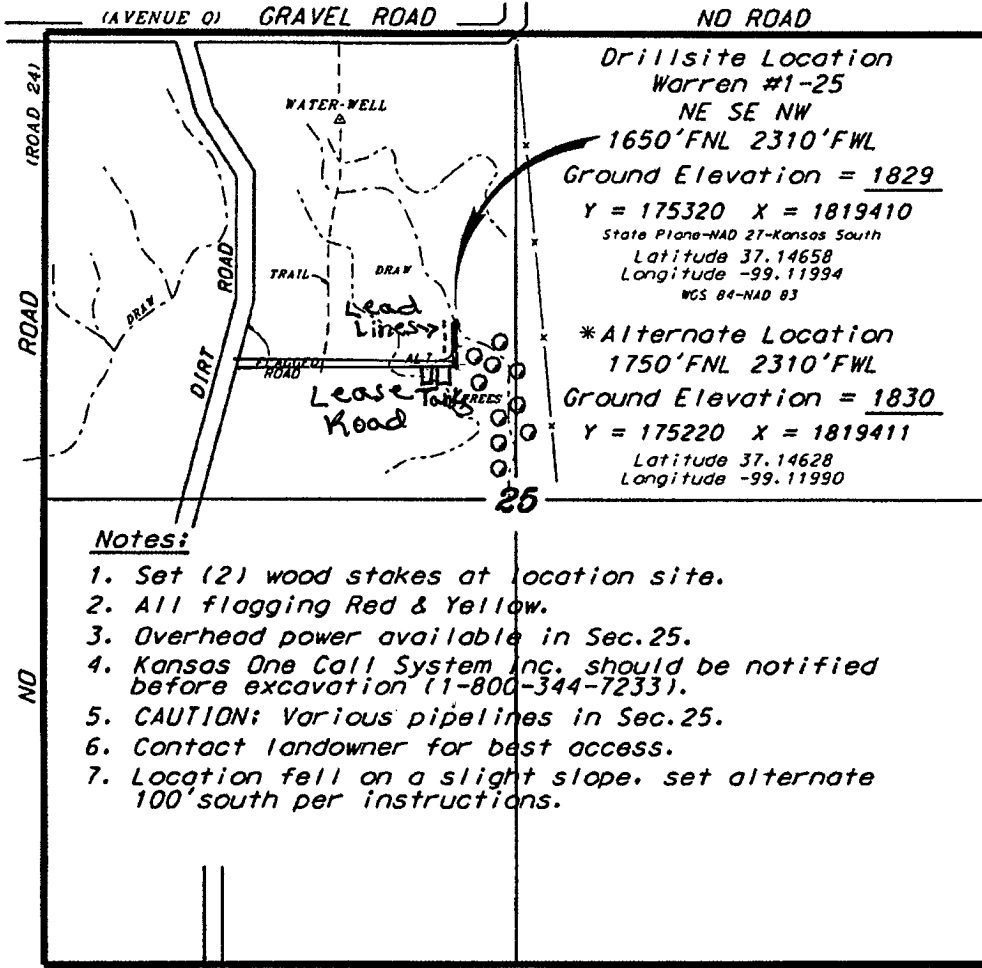


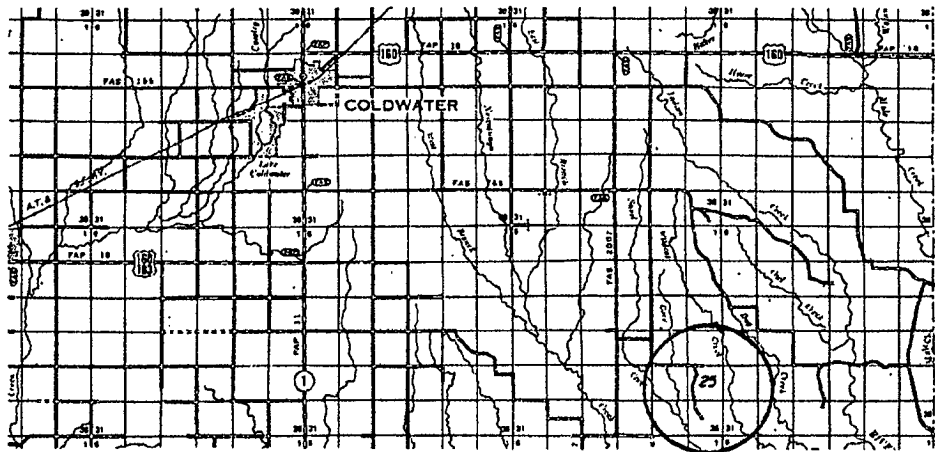
**EVERGLOW ENERGY, LLC  
WARREN LEASE  
NW. 1/4, SECTION 25, T33S, R17W  
COMANCHE COUNTY, KANSAS**



**Notes:**

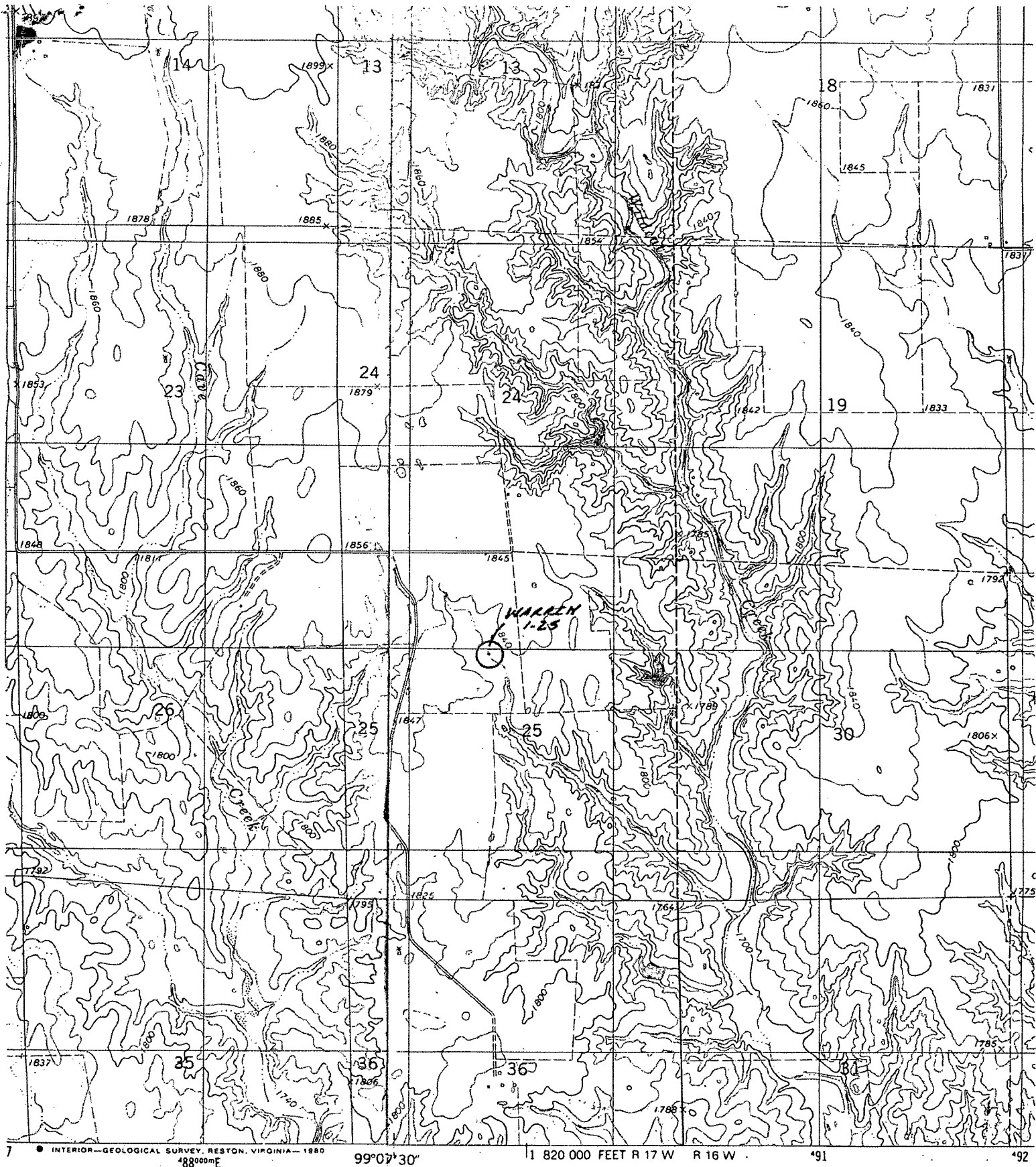
1. Set (2) wood stakes at location site.
2. All flagging Red & Yellow.
3. Overhead power available in Sec.25.
4. Kansas One Call System Inc. should be notified before excavation (1-800-344-7233).
5. CAUTION; Various pipelines in Sec.25.
6. Contact landowner for best access.
7. Location fell on a slight slope. set alternate 100' south per instructions.

\*Ingress and egress to location as shown on this plat is for usage only and may not be legally opened for public use. Contact landowner, tenant and county road department for access.



\* Controlling data is based upon the best maps and photographs available to us and upon a regular section of land containing 640 acres.  
 \* Approximate section lines were determined using the normal standard of care of oilfield surveyors practicing in the state of Kansas. The section corners, which establish the precise section lines, were not necessarily located, and the exact location of the drillsite location in the section is not guaranteed. Therefore, the operator securing this service and accepting this plat and all other parties relying thereon agree to hold Central Kansas Oilfield Services, Inc., its officers and employees harmless from all losses, costs and expenses and said entities released from any liability from incidental or consequential damages.  
 \* Elevations derived from National Geodetic Vertical Datum.

Date January 26, 2018



**ROAD CLASSIFICATION**

- Interstate highway, surface
- Primary highway, surface
- Secondary highway, surface
- Interstate Route
- U. S. Route
- State Route

- Light-duty road, hard or improved surface
- Unimproved road

Mapped, edited, and published by the Geological Survey

Control by USGS and NOS/NOAA

Topography by photogrammetric methods from aerial photographs taken 1974. Field checked 1974. Map edited 1980

Projection and 10,000-foot grid ticks: Kansas coordinate system, south zone (Lambert conformal conic).  
 1000-meter Universal Transverse Mercator grid, zone 14  
 1927 North American datum

