



Home
(785) 798-3400

Andrew Stenzel Geologist

Ness City, Kansas



Call
(785) 798-5977

Scale 1:240 (5"=100') Imperial
Measured Depth Log

Well Name: Brownie #5
UWI: 15062223080000
Location: NE-NW-NE-NE Sec 18-14S-30W (Gove County)
License Number: 15-063-22308
Spud Date: 10/2/17
Surface Coordinates: 151'FNL & 892' FEL
Region: KANSAS
Drilling Completed: 10/17/17

Bottom Hole

Coordinates:

Ground Elevation (ft): 2816

K.B. Elevation (ft): 2821

Logged Interval (ft): 3500

Total Depth (ft): 4654

Formation:

Type of Drilling Fluid: Mud-Co Chemical

Printed by MUD.LOG from WellSight Systems 1-800-447-1534 www.WellSight.com

OPERATOR

Company: Palomino Petroleum, Inc.
Address: 4924 SE 84th St.
Newton, KS 67114

GEOLOGIST

Name: Andrew Stenzel
Company: Petroleum Geologist
Address: 501 S. Franklin
Ness City, KS 67560

Casing Record

SURFACE Casing: Ran 5 jts new 8 5/8", 24# casing @ 218'.

PRODUCTION Casing: Ran 5 1/2" casing

Drilling Report

DAILY DRILLING REPORT:

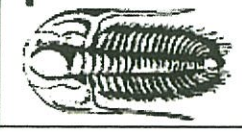
10/2/17 MIRU, ran surface casing
10/3/17 Waiting on cement, shut down due to heavy rain
10/4/17 Shut Down
10/5/17 Shut Down
10/6/17 Shut Down
10/7/17 Drilling @ 1466'
10/8/17 Drilling @ 2482'
10/9/17 Drilling @ 3147'
10/10/17 Drilling @ 3643'
10/11/17 DST #1, DST #2
10/12/17 Circulating for samples @ 4025', DST #3
10/13/17 DST #4, DST #5
10/14/17 Drilling @ 4187'

Cher. Sh.
Miss.
RTD

4427 (-1606)
4516 (-1695)
4654 (-1833)

Cher. Sh.
Miss.
LTD

4433 (-1612)
4510 (-1689)
4660 (-1839)



DRILL STEM TEST REPORT

Palomino Petroleum
4924 SE 84th St
Newton, Ks 67114
ATTN: Andrew Stenzel

18-14-30w Gove Ks
Brownie #5
Job Ticket: 64257 DST#: 1
Test Start: 2017.10.11 @ 01:10:32

GENERAL INFORMATION:

Formation: Toronto- LKC A
Deviated: No Whipstock
Time Tool Opened: 03:27:32
Time Test Ended: 08:04:32

Interval: 3868.00 ft (KB) To 3910.00 ft (KB) (TVD)
Total Depth: 3910.00 ft (KB) (TVD)
Hole Diameter: 7.88 inchesHole Condition: Good

Test Type: Conventional Bottom Hole (Initial)
Tester: Brandon Turley
Unit No: 79
Reference Elevations: 2821.00 ft (KB)
2816.00 ft (CF)
5.00 ft
KB to GRICE:

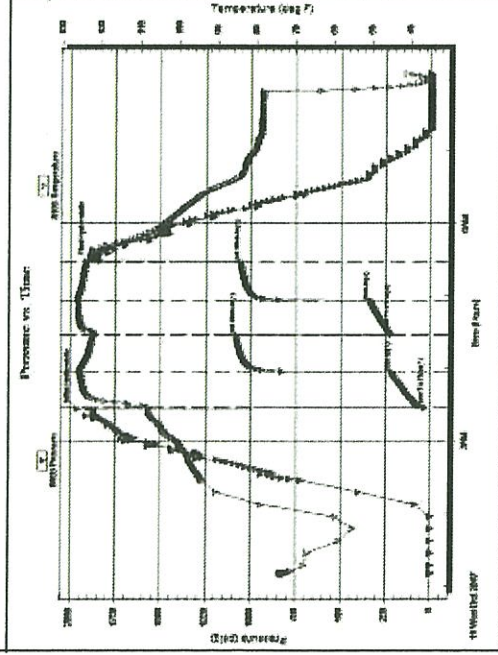
Serial #: 8166 Outside

Press@RunDepth: 334.86 psig @ 3868.00 ft (KB)
Start Date: 2017.10.11 End Date:
Start Time: 01:10:37 End Time:

Capacity: 8000.00 psig
Last Callb.: 2017.10.11
Time On Blrm: 2017.10.11 @ 03:26:32
Time Off Blrm: 2017.10.11 @ 05:29:32

TEST COMMENT:

IF: BOB in 6 1/2 mins.
IS: Surface blow died in 20 min.
FF: BOB in 8 min.
FS: Surface blow died in 25 min.



PRESSURE SUMMARY

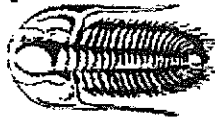
Time (Min.)	Pressure (psig)	Temp (deg F)	Annotation
0	1960.78	107.76	Initial Hydro-static
1	30.26	107.66	Open To Flow (1)
31	214.11	125.25	Shut-In(1)
61	1081.27	122.02	End Shut-In(1)
62	218.30	121.82	Open To Flow(2)
90	334.86	125.82	Shut-In(2)
121	1055.54	123.80	End Shut-In(2)
123	1885.85	121.42	Final Hydro-static

Recovery

Length (ft)	Description	Volume (bbl)
253.00	mcw 95%w 5% m	2.46
252.00	ocnw 5%o 85%w 10% m	3.53
181.00	ocnw 10%o 50%w 40% m	2.54
10.00	oil 100%o	0.14

Gas Rates

Choke (inches)	Pressure (psig)	Gas Rate (Mcf/day)



TRIBOLITE TESTING, INC.

DRILL STEM TEST REPORT

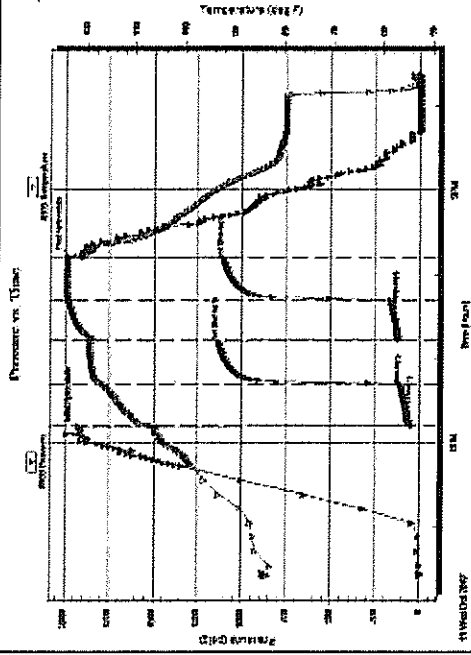
Palominos Petroleum
 4924 SE 84th St
 Newton, KS 67114
 ATTN: Anderw Stenzel
 18-14-30w Gove Ks
 Brownie #5
 Job Ticket: 64258
 DST#-2
 Test Start: 2017.10.11 @ 16:26:00

GENERAL INFORMATION:

Formation: LKG C
 Deviated: No Whipstock
 Time Tool Opened: 18:11:30
 Time Test Ended: 22:22:00
 Interval: 3952.00 ft (KB) To 3952.00 ft (KB) (TVD)
 Total Depth: 3952.00 ft (KB) (TVD)
 Hole Diameter: 7.88 inchestHole Condition: Good
 Test Type: Conventional Bottom Hole (Reset)
 Tester: Brandon Turley
 Unit No: 79
 Reference Elevations: 2821.00 ft (KB)
 2816.00 ft (CF)
 5.00 ft
 KB to GR/CF:

Serial #: 8166 Outside
 Press@RunDepth: 161.06 psig @ 3924.00 ft (KB)
 Start Date: 2017.10.11 End Date:
 Start Time: 16:26:05 End Time:
 Capacity: 8000.00 psig
 Last Callb.: 2017.10.11
 Time On Blm: 2017.10.11 @ 18:11:00
 Time Off Blm: 2017.10.11 @ 20:13:00

TEST COMMENT: IF: BOB in 5 min.
 IS: 5" blow.
 FF: BOB in 8 min.
 FS: 8" blow.



PRESSURE SUMMARY

Time (Min.)	Pressure (psig)	Temp (deg F)	Annotation
0	1919.11	106.31	Initial Hydro-static
1	38.80	105.25	Open To Flow (1)
30	105.89	116.56	Shut-In(1)
61	1132.36	119.36	End Shut-In(1)
62	115.26	118.73	Open To Flow(2)
90	161.08	123.47	Shut-In(2)
120	1102.43	123.68	End Shut-In(2)
122	1976.51	120.34	Final Hydro-static

Recovery

Length (ft)	Description	Volume (bbl)
252.00	mcgo 20%g 30%ho 50%fm	2.44
157.00	go 10%g 90%o	2.20
0.00	662 GIP	0.00

*Recovery from multiple tests

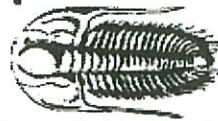
Gas Rates

Choke (Inches)	Pressure (psig)	Gas Rate (Mcf/d)

Tribolite Testing, Inc

Ref. No: 64258

Printed: 2017.10.12 @ 08:17:34



**TRILOBITE
TESTING, INC.**

DRILL STEM TEST REPORT

Palomino Petroleum
4924 SE 84th St
Newton, Ks 67114

18-14-30w Gove Ks

Brownie #5

Job Ticket: 64259
Test Start: 2017.10.12 @ 09:35:13
DST#: 3

ATTN: Andrew Stenzel

GENERAL INFORMATION:

Formation: LKG FG
Deviated: No Whipstock
Time Tool Opened: 11:46:43
Time Test Ended: 15:54:43

ft (KB)

Interval: 3957.00 ft (KB) To 4025.00 ft (KB) (TVD)
Total Depth: 4025.00 ft (KB) (TVD)
Hole Diameter: 7.88 inchesthole Condition: Good

Test Type: Conventional Bottom Hole (Reset)
Tester: Brandon Turley
Unit No: 79

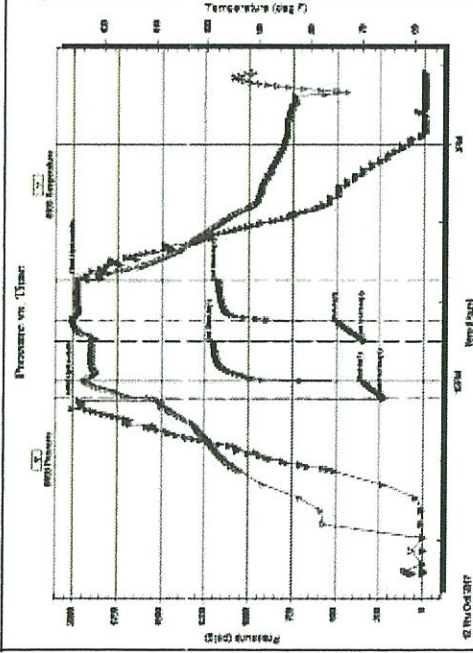
Reference Elevations: 2821.00 ft (KB)
2816.00 ft (CF)
5.00 ft
KB to GRFCF:

Serial #: 8166

Press@RunDepth: 487.28 psig @ 3958.00 ft (KB)
Start Date: 2017.10.12
Start Time: 09:35:18

Capacity: 8000.00 psig
Last Calls: 2017.10.12
Time On Birt: 2017.10.12 @ 11:44:43
Time Off Birt: 2017.10.12 @ 13:17:13

TEST COMMENT: IF: BOB in 1 1/2 min.
IS: Weak surging surface blow.
FF: BOB in 2 1/2 min.
FS: 2 blow.



PRESSURE SUMMARY

Time (Min.)	Pressure (psig)	Temp (deg F)	Annotation
0	1986.01	103.10	Initial Hydro-static
2	225.98	110.28	Open To Flow (1)
15	339.41	123.26	Shut-In (1)
45	1203.64	122.28	End Shut-In (1)
46	333.65	121.50	Open To Flow (2)
61	487.28	125.95	Shut-In (2)
91	1176.05	124.89	End Shut-In (2)
93	1947.27	120.54	Final Hydro-static

Recovery

Length (ft)	Description	Volume (bbl)
189.00	mcw 95%w 5%g	1.56
189.00	gocmw 40%g 10%o 40%w 10%fm	2.65
378.00	gocmw 40%g 10%o 30%w 20%fm	5.30
428.00	mw cgo 30%g 30%o 20%w 20%fm	6.00
0.00	139 GJP	0.00

* Recovery from multiple tests

Trilobite Testing, Inc

Ref. No: 64259

Printed: 2017.10.12 @ 16:13:47

Gas Rates

Choke (inches)	Pressure (psig)	Gas Rate (Mcf/d)



**TRILOBITE
TESTING, INC.**

DRILL STEM TEST REPORT

Palomino Petroleum

18-14-30w Gove Ks

ATTN: Andrew Stenzel

Test Start: 2017.10.13 @ 04:08:03

GENERAL INFORMATION:

Formation: LKC H-1
 Deviated: No Whipstock
 Time Tool Opened: 06:13:33
 Time Test Ended: 10:07:03
 Interval: 4051.00 ft (KB) To 4120.00 ft (KB) (TVD)
 Total Depth: 4120.00 ft (KB) (TVD)
 Hole Diameter: 7.88 inches-Hole Condition: Good

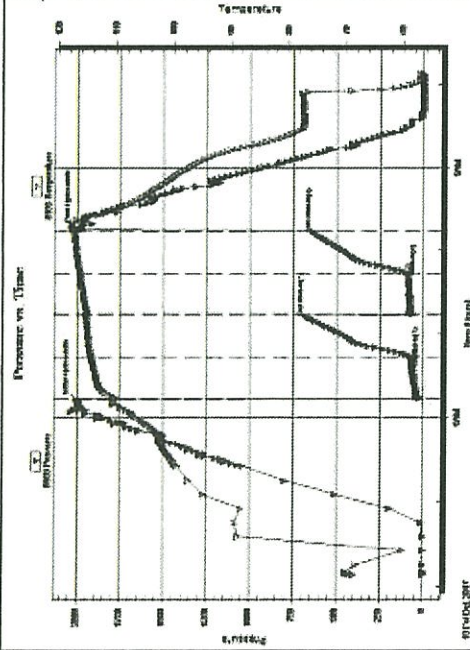
Test Type: Conventional Bottom Hole (Reset)
 Tester: Brandon Turley
 Unit No: 79
 Reference Elevations: 2821.00 ft (KB)
 2816.00 ft (CF)
 KB to GRFC: 5.00 ft

Serial #: 8166

Outside
 Press@RunDepth: 85.52 psig @ 4052.00 ft (KB)
 Start Date: 2017.10.13
 Start Time: 04:08:08

Capacity: 8000.00 psig
 Last Calls: 2017.10.13
 Time On Birt: 2017.10.13 @ 06:13:03
 Time Off Birt: 2017.10.13 @ 08:16:03

TEST COMMENT: IF: BOB in 15 min.
 IS: Surface blow died in 25 min.
 FF: BOB in 12 min.
 FS: Surface blow built to 1/4.



PRESSURE SUMMARY

Time (Min.)	Pressure (psig)	Temp (deg F)	Annotation
0	2000.90	110.45	Initial Hydro-static
1	23.50	109.64	Open To Flow (1)
31	69.53	114.25	Shut-In(1)
60	681.90	115.18	End Shut-In(1)
62	64.55	115.05	Open To Flow(2)
90	85.52	116.17	Shut-In(2)
121	640.74	117.22	End Shut-In(2)
123	1988.97	117.51	Final Hydro-static

Recovery

Length (ft)	Description	Volume (bbl)
63.00	gocm 30%g 30%a 40%a	0.31
113.00	gocm 10%g 10%a 80%a	1.07
0.00	328 GIP	0.00

* Recovery from multiple tests

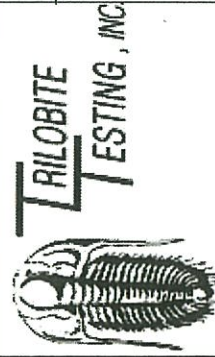
Trilobite Testing, Inc

Ref. No: 64280

Printed: 2017.10.13 @ 10:15:34

Gas Rates

Choke (inches)	Pressure (psig)	Gas Rate (Mcf/d)



DRILL STEM TEST REPORT

Palomino Petroleum
 4924 SE 84th St
 Newton, Ks 67114

18-14-30w Gove Ks

Brownie #5

Job Ticket: 64261

DST#: 5

ATTN: Andrew Stenzel

Test Start: 2017.10.13 @ 19:42:55

GENERAL INFORMATION:

Formation: LKC J
 Deviated: No Whipstock
 Time Tool Opened: 21:47:25
 Time Test Ended: 01:21:25

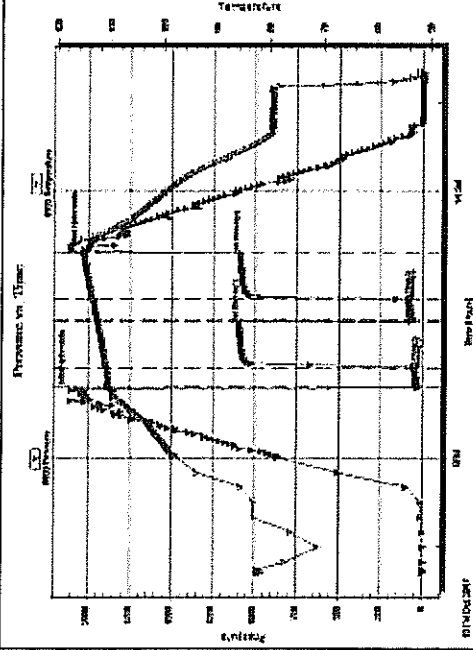
ft (KB)

Test Type: Conventional Bottom Hole (Reset)
 Tester: Brandon Turley
 Unit No: 79

Interval: 4126.00 ft (KB) To 4151.00 ft (KB) (TVD) Reference Elevations: 2821.00 ft (KB)
 Total Depth: 4151.00 ft (KB) (TVD) 2816.00 ft (CF)
 Hole Diameter: 7.88 inchesHole Condition: Good KB to GRVCF: 5.00 ft

Serial #: 8166 Outside Capacity: 8000.00 psig
 Press@RunDepth: 86.66 psig @ 4127.00 ft (KB)
 Start Date: 2017.10.13 End Date: 2017.10.14
 Start Time: 19:43:00 End Time: 01:21:24
 Time On Blm: 2017.10.13 @ 21:45:25
 Time Off Blm: 2017.10.13 @ 23:19:25

TEST COMMENT: IF: BOB in 2 min
 IS: BOB in 12 min
 FF: BOB in 4 min
 FS: BOB in 19 min



PRESSURE SUMMARY

Time (Min.)	Pressure (psig)	Temp (deg F)	Annotation
0	2094.91	109.59	Initial Hydro-static
2	27.97	110.41	Open To Flow (1)
15	50.36	110.72	Shut-In(1)
46	1092.59	112.42	End Shut-In(1)
47	65.57	112.54	Open To Flow(2)
61	86.68	113.21	Shut-In(2)
93	1085.01	115.07	End Shut-In(2)
94	2023.02	117.34	Final Hydro-static

Recovery

Length (ft)	Description	Volume (bbl)
63.00	90cm 40%g 10%o 50%a	0.31
189.00	9o 20%g 80%o	2.13
0.00	1386 GIP	0.00

* Recovery from surface tests

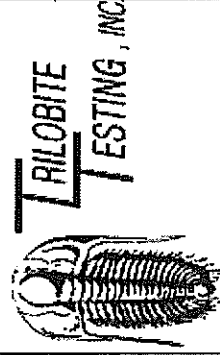
Trilobite Testing, Inc

Ref. No: 64261

Printed: 2017.10.14 @ 07:40:26

Gas Rates

Choke (inches)	Pressure (psig)	Gas Rate (M/dst)



DRILL STEM TEST REPORT

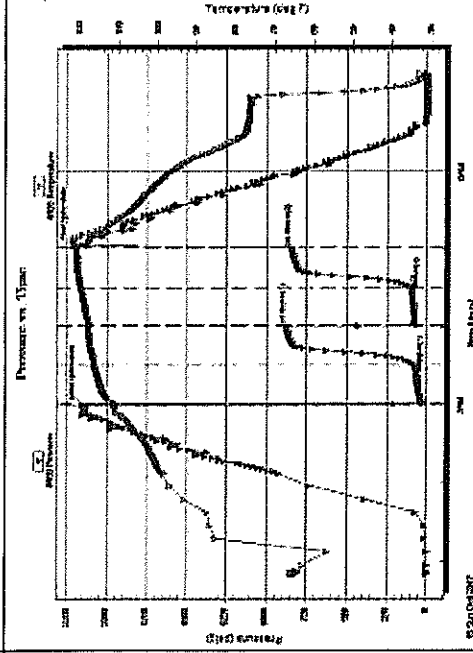
Palomino Petroleum
 4924 SE 84th St
 Newton, Ks 67114
 ATTN: Andrew Stenzel
 18-14-30w Gove Ks
 Brownie #5
 Job Ticket: 64262
 DST#: 6
 Test Start: 2017.10.15 @ 00:50:40

GENERAL INFORMATION:

Formation: Pawnee Myrick Statia
 Deviated: No Whipstock
 Time Tool Opened: 03:01:10
 Time Test Ended: 07:15:40
 Interval: 4336.00 ft (KB) To 4404.00 ft (KB) (TVD)
 Total Depth: 4404.00 ft (KB) (TVD)
 Hole Diameter: 7.88 inchesHole Condition: Good
 Test Type: Conventional Bottom Hole (Reset)
 Tester: Brandon Turley
 Unit No: 79
 Reference Elevations: 2821.00 ft (KB)
 2816.00 ft (CF)
 KB to GRVCF: 5.00 ft

Serial #: 8166 Outside Capacity: 8000.00 psig
 Press@RunDepth: 90.97 psig @ 4337.00 ft (KB)
 Start Date: 2017.10.15 End Date: 2017.10.15
 Start Time: 00:50:45 End Time: 07:15:39
 Time On Blm: 2017.10.15 @ 03:00:10
 Time Off Blm: 2017.10.15 @ 05:03:10

TEST COMMENT: IF: BOB in 14 min.
 IS: Surface blow died in 19 min.
 FF: BOB in 4 min.
 FS: Surface blow built to 2.



PRESSURE SUMMARY

Time (Min.)	Pressure (psig)	Temp (deg F)	Annotation
0	2149.99	111.32	Initial Hydro-static
1	19.73	111.11	Open To Flow (1)
31	88.15	116.18	Shut-In(1)
60	873.37	117.82	End Shut-In(1)
61	59.98	117.62	Open To Flow(2)
90	90.97	119.58	Shut-In(2)
122	842.70	120.83	End Shut-In(2)
123	2209.58	120.74	Final Hydro-static

Recovery

Length (ft)	Description	Volume (bbl)
128.00	gocm 10%g 20%a 70%m	0.67
73.00	gocm 10%g 30%a 60%m	1.02
0.00	683 GIP	0.00

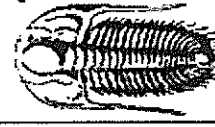
* Recovery from gas lift
 Triobite Testing, Inc

Ref. No: 64262

Printed: 2017.10.15 @ 08:58:00

Gas Rates

Choke (Inches)	Pressure (psig)	Gas Rate (Mcf/d)



DRILL STEM TEST REPORT

Palomino Petroleum
 4924 SE 84th St
 Newton, Ks 67114

18-14-30w Gove Ks

Brownie #5

Job Ticket: 64263
 DST#: 7
 Test Start: 2017.10.15 @ 20:25:03

ATTN: Andrew Stenzel

GENERAL INFORMATION:

Formation: Ft Scott Johnson
 Deviated: No Whipstock
 Time Tool Opened: 22:22:33
 Time Test Ended: 03:27:03
 Interval: 4396.00 ft (KB) To 4492.00 ft (KB) (TVD)
 Total Depth: 4492.00 ft (KB) (TVD)
 Hole Diameter: 7.88 inch-Hole Condition: Good
 Test Type: Conventional Bottom Hole (Reset)
 Tester: Brandon Turley
 Unit No: 79
 Reference Elevations: 2821.00 ft (KB)
 2816.00 ft (CF)
 5.00 ft
 KB to GRVCF:

Serial #: 8166

Press@RunDepth: 627.59 psig @ 4397.00 ft (KB)
 Start Date: 2017.10.15
 Start Time: 20:25:08

Capacity: 8060.00 psig
 Last Callb.: 2017.10.16
 Time On Birt: 2017.10.15 @ 22:21:33
 Time Off Birt: 2017.10.15 @ 23:44:33

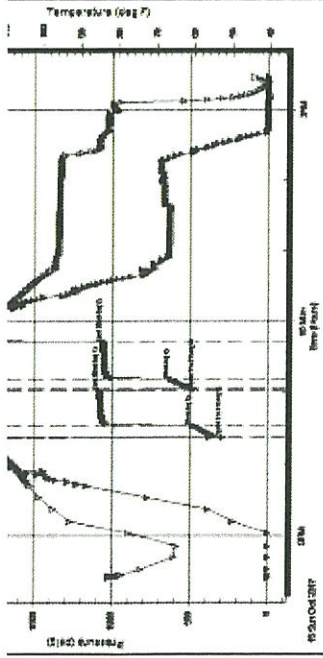
TEST COMMENT: IF: BOB in 1 min.
 IS: BOB in 15 min.
 FF: BOB in 1 min.
 FS: BOB in 8 min.

Pressure vs. Time



PRESSURE SUMMARY

Time (Min.)	Pressure (psig)	Temp (deg F)	Annotation
0	2245.33	114.44	Initial Hydro-static



11	483.38	130.87	Shut-In(1)
41	1081.50	129.77	End Shut-In(1)
42	470.46	128.94	Open To Flow(2)
51	627.59	134.13	Shut-In(2)
82	1057.69	133.15	End Shut-In(2)
83	2233.71	133.06	Final Hydro-static

Recovery

Length (ft)	Description	Volume (bbl)
189.00	mcgo 10%g 70%o 20%m	1.56
1197.00	go 20%g 80%o	16.79
83.00	ocm 40%o 60%m	1.16
0.00	1429 GIP	0.00

Gas Rates

Choke (inches)	Pressure (psig)	Gas Rate (Mcft/d)

* Recovery from multiple tests

Triobite Testing, Inc

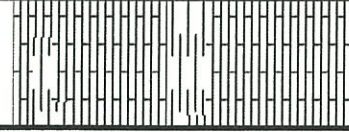
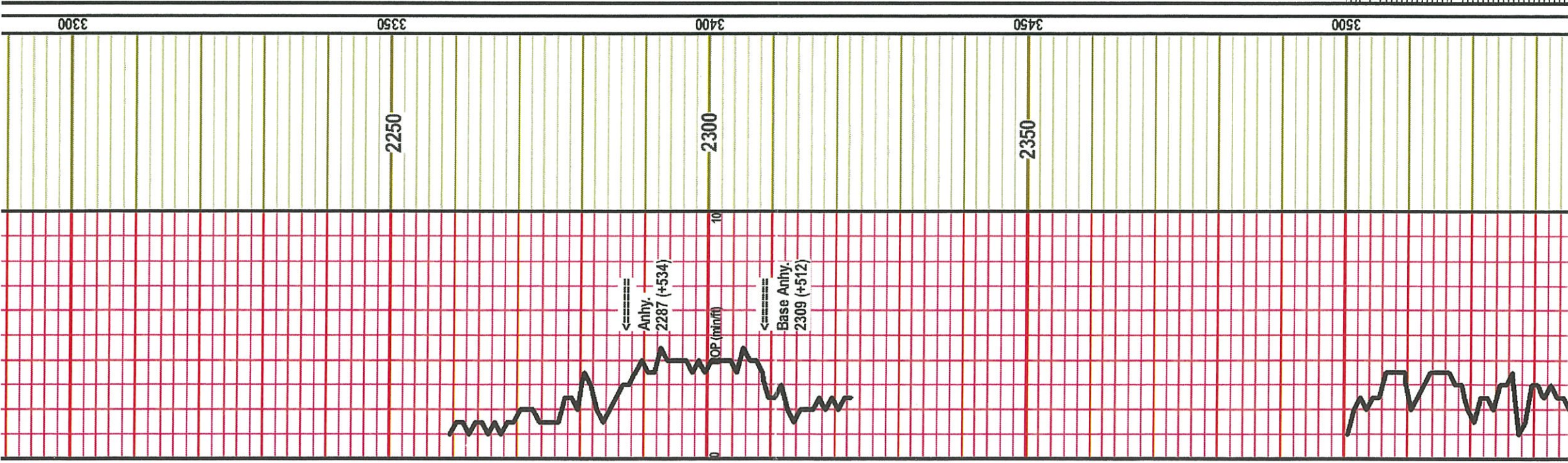
Ref. No: 64263

Printed: 2017.10.16 @ 07:03:42

ROCK TYPES

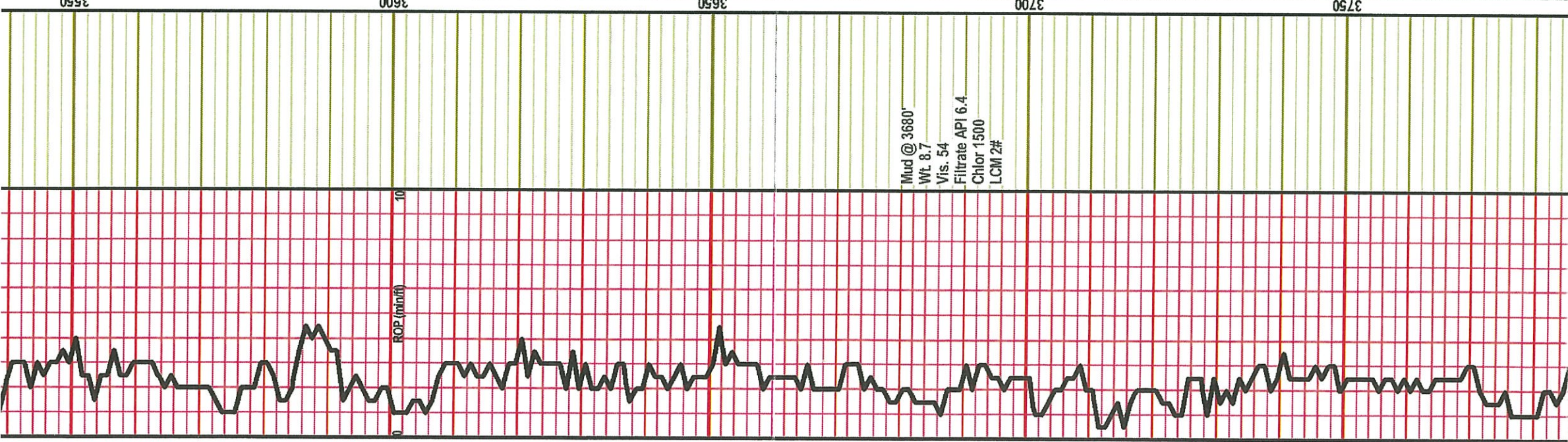
Anhy	Clyst	Gyp	Mrlst	Shgy
Bent	Carb sh	Igne	Salt	Slkst
Brec	Congl	Lmst	Shale	Ss
Cht	Dol	Meta	Shcol	Till

ROP (min/ft)	Misc	% Lithology	Geological Descriptions	DST
ROP (min/ft)				
0				
10				
32		Depth		
3250				

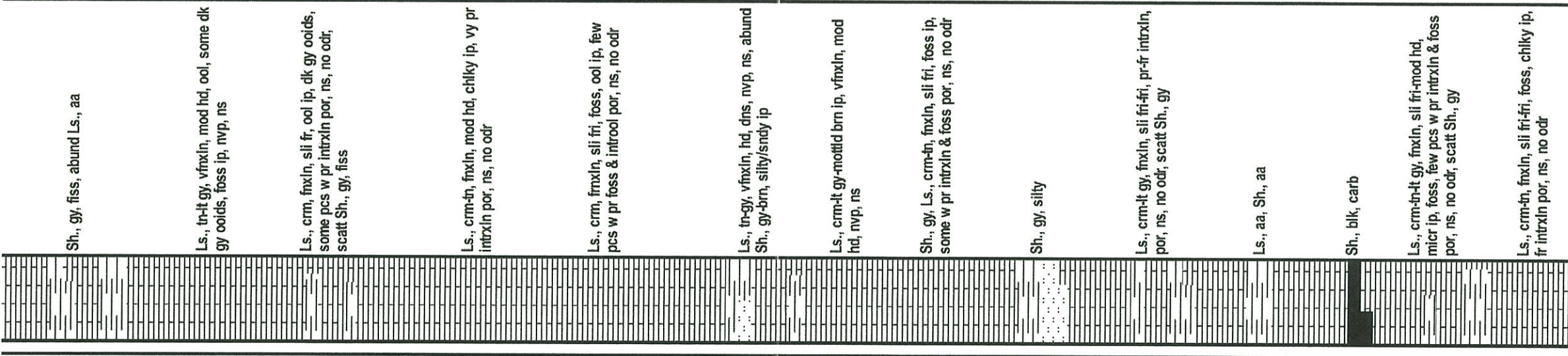


Ls., crm, fmxln, sli fri, foss, nvp, ns,
 abund Sh., gy-blk carb ip, scatt SS, tn,
 vfrgrn, shly, vy pr intrgran por, ns, no
 odr

Ls., crm-buff, fmxln, sli fri-mod hd, foss
 ip, sndy ip, nvp, ns, no odr



Mud @ 3680'
 Wt. 8.7
 Vis. 54
 Filtrate API 6.4
 Chlor 1500
 LCM 2#



Sh., gy, fiss, abund Ls., aa

Ls., tr-t gy, vfxln, mod hd, ool, some dk gy ooids, foss ip, nvp, ns

Ls., crm, fmxln, sli fr, ool ip, dk gy ooids, some pcs w pr intrxn por, ns, no odr, scatt Sh., gy, fiss

Ls., crm-tn, fmxln, mod hd, chky ip, vy pr intrxn por, ns, no odr

Ls., crm, fmxln, sli fri, foss, ool ip, few pcs w pr foss & introol por, ns, no odr

Ls., tr-gy, vfxln, hd, dns, nvp, ns, abund Sh., gy-brn, silty/sndy ip

Ls., crm-tt gy-mottld brn ip, vfxln, mod hd, nvp, ns

Sh., gy, Ls., crm-tn, fmxln, sli fri, foss ip, some w pr intrxn & foss por, ns, no odr

Sh., gy, silty

Ls., crm-tt gy, fmxln, sli fri-fri, pr-fr intrxn, por, ns, no odr, scatt Sh., gy

Ls., aa, Sh., aa

Sh., blk, carb

Ls., crm-tt gy, fmxln, sli fri-mod hd, micr ip, foss, few pcs w pr intrxn & foss por, ns, no odr, scatt Sh., gy

Ls., crm-tn, fmxln, sli fri-fri, foss, chky ip, fr intrxn por, ns, no odr

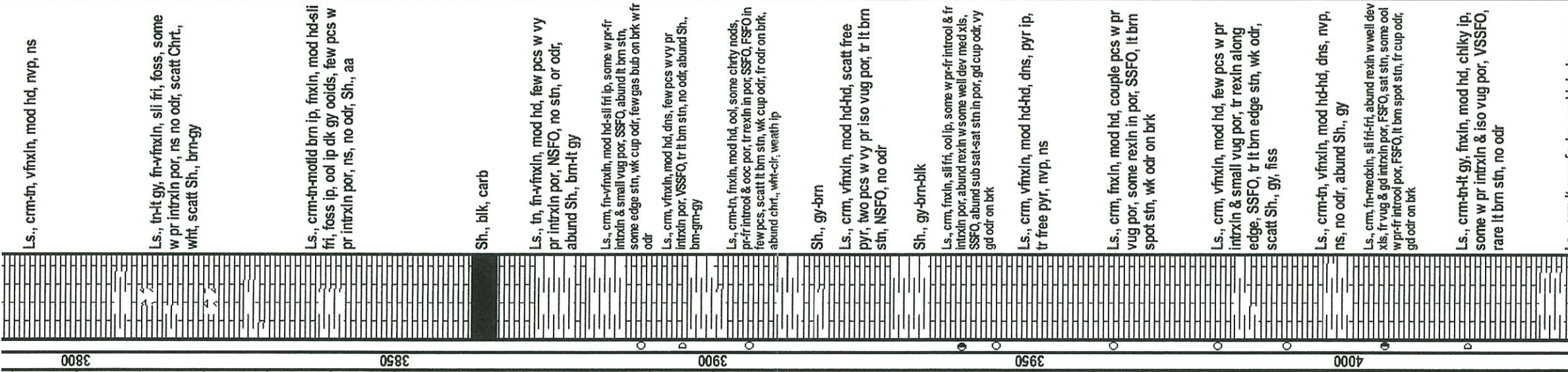
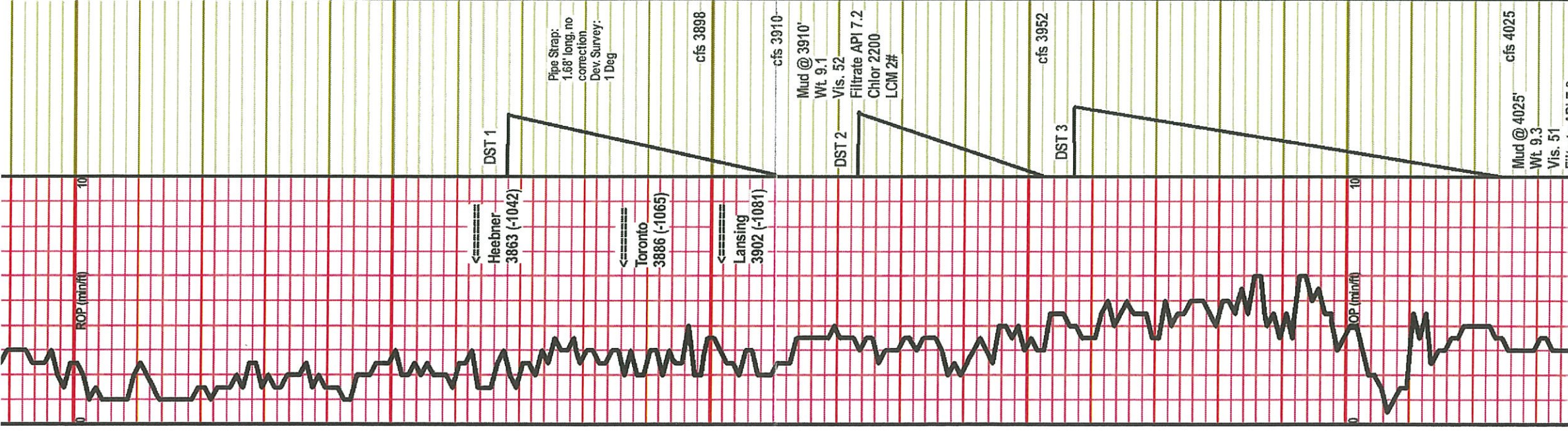
3550

3600

3650

3700

3750



Ls., crm-tn, vfnxln, mod hd, nvp, ns
 DST #1 3868-3910
 IF: BOB in 6 1/2 min
 IS: WSB, died in 20 min
 FF: BOB in 8 min
 FS: WSB, died in 25 min
 Recovery:
 10° CO
 181° OCMW (10%O, 50%W, 40%AM)
 252° OCMW (5%O, 85%W, 10%AM)
 253° MCW (95%W, 5%AM)
 —
 696' TF
 FP: 30-214; 218-334
 SIP: 1081-1055
 HP: 1960-1885
 BHT: 123 Deg F
 Gravity API: —
 Chlorides: 28000 ppm

Ls., tr-ft gy, fn-vfnxln, sli fri, foss, some w pr intrxn por, ns no odr, scatt Chrt., wht, scatt Sh., brn-gy
 Ls., crm-tn-modifd brn ip, fmxln, mod hd-sli fri, foss ip, ool ip dk gy ooids, few pcs w pr intrxn por, ns, no odr, Sh., aa
 Sh., blk, carb
 Ls., tr, fn-vfnxln, mod hd, few pcs w vy pr intrxn por, NSF0, no str, or odr, abund Sh., brn-ft gy
 Ls., crm, fn-vfnxln, mod hd-sli fri ip, some w pr-fr intrxn & small vug por, SSFO, abund ft brn str, some edge str, wk cup odr, few gas bub on brk w fr odr
 Ls., crm, vfnxln, mod hd, dns, few pcs w vy pr intrxn por, VSSFO, tr ft brn str, no odr, abund Sh., brn-grn-gy
 Ls., crm-tn, fmxln, mod hd, ool, some chtry nods, pr-fr introol & ooc por, tr rexln in por, SSFO, FSFO in few pcs, scatt ft brn str, wk cup odr, fr odr on brk, abund chrt., wht-cl, weath ip
 Sh., gy-brn
 Ls., crm, vfnxln, mod hd-hd, scatt free pyr, two pcs w vy pr iso vug por, tr ft brn str, NSF0, no odr
 Sh., gy-brn-blk
 Ls., crm, fmxln, sli fri, ool ip, some w pr-fr introol & fr intrxn por, abund rexln w some well dev xls, SSFO, abund sub sat-sat str in por, gd cup odr, vy gd odr on brk
 Ls., crm, vfnxln, mod hd-hd, dns, pyr ip, tr free pyr, nvp, ns
 Ls., crm, fmxln, mod hd, couple pcs w pr vug por, some rexln in por, SSFO, it brn spot str, wk odr on brk
 Ls., crm, vfnxln, mod hd, few pcs w pr intrxn & small vug por, tr rexln along edge, SSFO, tr ft brn edge str, wk odr, scatt Sh., gy, fiss
 Ls., crm-tn, vfnxln, mod hd-hd, dns, nvp, ns, no odr, abund Sh., gy
 Ls., crm, fn-medxln, sli fr-fr, abund rexln w well dev xls, fr vug & gd intrxn por, FSFO, sat str, some ool w pr-fr introol por, FSFO, it brn spot str, fr cup odr, gd odr on brk
 Ls., crm-tn-ft gy, fmxln, mod hd, chiky ip, some w pr intrxn & iso vug por, VSSFO, rare ft brn str, no odr

DST #2 3923-3952
 30-30-30-30
 IF: BOB in 5 min
 IS: Built to 5"
 FF: BOB in 8 min
 FS: Built to 8"
 Recovery:
 662' GIP
 157° GO (10%G, 90%O)
 252° MCGO (20%G, 30%O, 50%AM)
 —
 406' TF
 FP: 38-105; 115-161
 SIP: 1132-1102
 HP: 1919-1976
 BHT: 123 Deg F
 Gravity API: 36
 Chlor: —

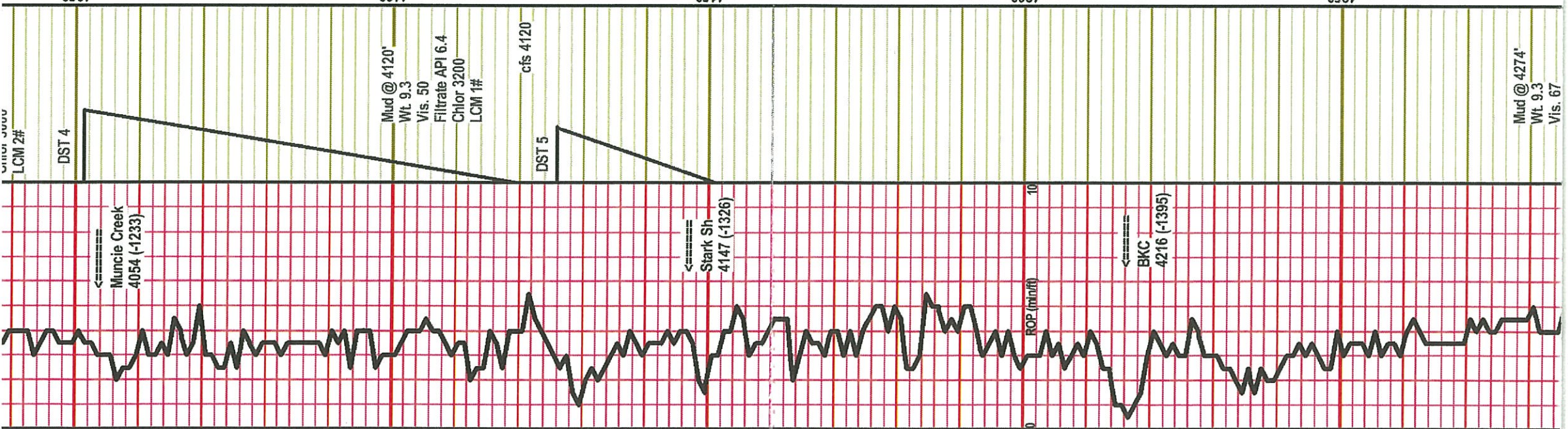
DST #3 3957-4025
 15-30-15-30
 IF: BOB in 1 1/2 min
 IS: Weak surging surface blow
 FF: BOB in 2 1/2 min
 FS: Built to 2"
 Recovery:
 139' GIP
 428° MWCGO (30%G, 30%O, 20%W, 20%AM)
 378° GOCMW (40%G, 10%O, 30%W, 20%AM)
 189° GOCMW (40%G, 10%O, 40%W, 10%AM)
 189° MCW (95%W, 5%AM)
 —
 1184' TF
 FP: 226-339; 334-487
 SIP: 1204-1176
 HP: 1966-1947
 BHT: 124 Deg F
 Gravity API: —
 Chlor: 59000 ppm

LCM 2#

Muncie Creek
4054 (-1233)

Stark Sh
4147 (-1326)

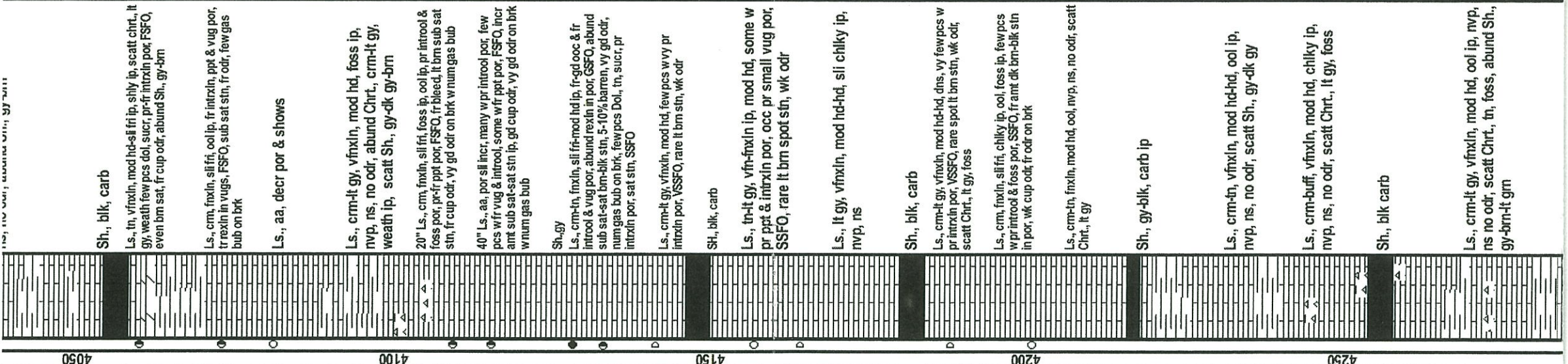
BKC
4216 (-1395)



Mud @ 4120'
Wt. 9.3
Vis. 50
Filtrate API 6.4
Chlor. 3200
LCM 1#

Mud @ 4274'
Wt. 9.3
Vis. 67

30-30-30-30



Sh., blk, carb

Ls., aa, decr por & shows

Ls., crm-lt gy, vfnxln, mod hd, foss ip, nvp, ns, no odr, abund Chrt., crm-lt gy, weath ip, scatt Sh., gy-dk gy-brn

20" Ls., cm, fvxln, sli fri, foss ip, ool ip, pr introol & foss por, pr-fr ppt por, FSFO, fr bleed, lt brn sub sat stn, fr cup odr, vy gd odr on brk w num gas bub

40" Ls., aa, por sli incr, many w pr introol por, few pcs w fr vug & introol, some w fr ppt por, FSFO, incr amt sub sat-stn stn ip, gd cup odr, vy gd odr on brk w num gas bub

Sh-gy

Ls., crm-lt, fvxln, sli fri-mod hd ip, fr-gd ooc & fr introol & vug por, abund rexln in por, GSFO, abund sub sat-sat-brn-blk stn, 5-10% barren, vy gd odr, num gas bub on brk, few pcs Dol., tn, sucr, pr intrxn por, sat stn, SSFO

Ls., crm-lt gy, vfnxln, mod hd, few pcs w vy pr intrxn por, VSSFO, rare lt brn stn, wk odr

Sh., blk, carb

Ls., tr-lt gy, vfn-fvxln ip, mod hd, some w pr ppt & intrxn por, occ pr small vug por, SSFO, rare lt brn spot stn, wk odr

Ls., lt gy, vfnxln, mod hd-hd, sli chiky ip, nvp, ns

Sh., blk, carb

Ls., crm-lt gy, vfnxln, mod hd-hd, dns, vy few pcs w pr intrxn por, VSSFO, rare spot lt brn stn, wk odr, scatt Chrt., lt gy, foss

Ls., cm, fvxln, sli fri, chiky ip, ool, foss ip, few pcs w pr introol & foss por, SSFO, fr amt dk brn-blk stn in por, wk cup odr, fr odr on brk

Ls., crm-lt, fvxln, mod hd, ool, nvp, ns, no odr, scatt Chrt., lt gy

Sh., gy-blk, carb ip

Ls., crm-lt, vfnxln, mod hd-hd, ool ip, nvp, ns, no odr, scatt Sh., gy-dk gy

Ls., crm-buff, vfnxln, mod hd, chiky ip, nvp, ns, no odr, scatt Chrt., lt gy, foss

Sh., blk carb

Ls., crm-lt gy, vfnxln, mod hd, ool ip, nvp, ns no odr, scatt Chrt., tn, foss, abund Sh., gy-brn-lt grn

30-30-30-30

IF: BOB in 15 min

IS: SB, died in 25 min

FF: BOB in 12 min

FS: SB, built to 1/4"

Recovery:

328' GIP

113' GOCM (10%G, 10%O, 80%AM)

63' GOCM (30%G, 30%O, 40%AM)

176' TF

FP: 24-70; 65-86

SIP: 682-641

HP: 2001-1999

BHT: 117 Deg F

Gravity API: —

Chlor: —

DST #5 4126-4151

15-30-15-30

IF: BOB in 2 min

IS: BOB in 12 min

FF: BOB in 4 min

FS: BOB in 19 min

Recovery:

1386' GIP

189' GO (20%G, 80%O)

63' GOCM (40%G, 10%O, 50%AM)

252' TF

FP: 28-50; 66-87

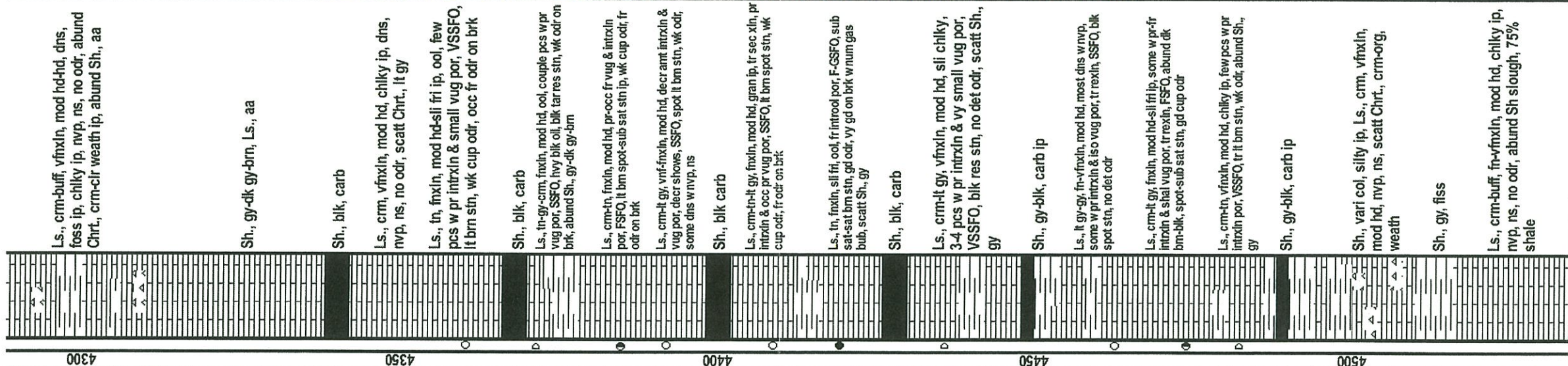
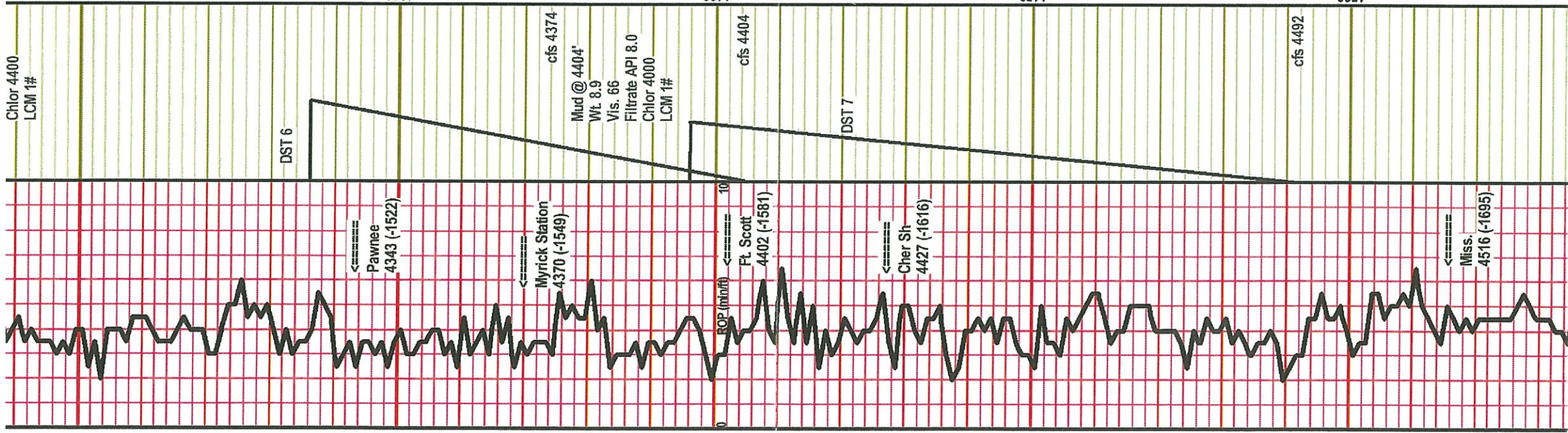
SIP: 1093-1085

HP: 2095-2023

BHT: 115 Deg F

Gravity API: 35

Chlor: —



Chlor 4400
LCM 1#

Sh., gy-dk gy-brn, Ls., aa

Sh., blk, carb

Ls., crm, vfnxn, mod hd, chiky ip, dns, nvp, ns, no odr, scatt Chrt., lt gy

Ls., tn, fmxln, mod hd-sll fri ip, ool, few pcs w pr intrxn & small vug por, VSSFO, lt brn stn, wk cup odr, occ fr odr on brk

Sh., blk, carb

Ls., tn-gy-crm, fmxln, mod hd, ool, couple pcs w pr vug por, SSFO, lvy blk oil, blk tarres stn, wk odr on brk, abund Sh., gy-dk gy-brn

Ls., crm-tn, fmxln, mod hd, pr-occ fr vug & intrxn por, FSFO, lt brn spot-sub sat stn ip, wk cup odr, fr odr on brk

Ls., crm-lt gy, vnf-fmxln, mod hd, decr amt intrxn & vug por, decr shows, SSFO, spot lt brn stn, wk odr, some dns w nvp, ns

Sh., blk carb

Ls., crm-tn-lt gy, fmxln, mod hd, gran ip, fr sec xln, pr intrxn & occ pr vug por, SSFO, lt brn spot stn, wk cup odr, fr odr on brk

Ls., tn, fmxln, sll fri, ool, fr introol por, F-GSFO, sub sat-sat brn stn, gd odr, vy gd on brk w num gas bub, scatt Sh., gy

Sh., blk, carb

Ls., crm-lt gy, vfnxn, mod hd, sll chiky, 3-4 pcs w pr intrxn & vy small vug por, VSSFO, blk res stn, no det odr, scatt Sh., gy

Sh., gy-blk, carb ip

Ls., lt gy-gy, fn-vfnxn, mod hd, most dns w nvp, some w pr intrxn & iso vug por, fr rexln, SSFO, blk spot stn, no det odr

Ls., crm-lt gy, fmxln, mod hd-sll fri ip, some w pr fr intrxn & shal vug por, fr rexln, FSFO, abund dk brn-blk, spot-sub sat stn, gd cup odr

Ls., crm-tn, vfnxn, mod hd, chiky ip, few pcs w pr intrxn por, VSSFO, fr lt brn stn, wk odr, abund Sh., gy

Sh., gy-blk, carb ip

Sh., vari col, silty ip, Ls., crm, vfnxn, mod hd, nvp, ns, scatt Chrt., crm-org, weath

Sh., gy, fss

Ls., crm-buff, fn-vfnxn, mod hd, chiky ip, nvp, ns, no odr, abund Sh slough, 75% shale

DST #6 4336-4404
IF: BOB in 14 min
IS: SB, died in 19 min
FF: BOB in 4 min
FS: SB, built to 2"

Recovery:
683' GIP
126' GOCM (10%G, 20%O, 70%M)
73' GOCM (10%G, 30%O, 60%M)

199' TF

FP: 20-68; 60-91
SIP: 873-843
HP: 2150-2210

BHT: 120 Deg F
Gravity API: -
Chlor: -

DST #7 4396-4492
10-30-10-30

IF: BOB in 1 min
IS: BOB in 15 min
FF: BOB in 1 min
FS: BOB in 8 min

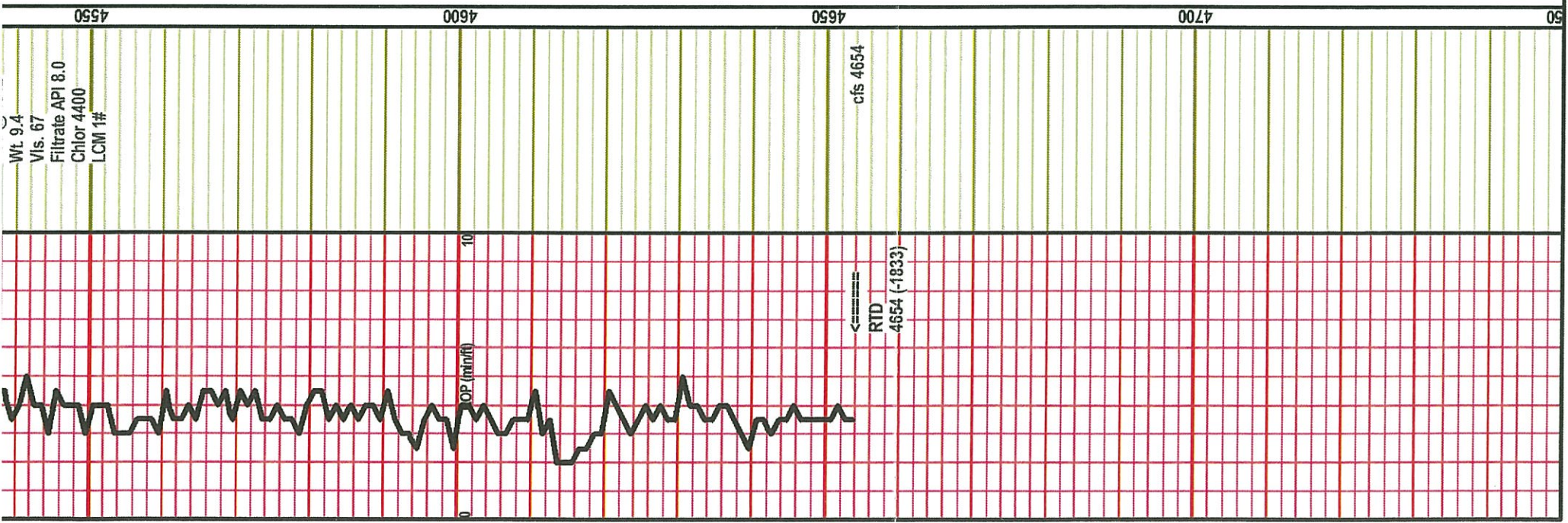
Recovery:

1429' GIP
189' MCGO (10%g, 70%o, 20%om)
1197' GO (20%G, 80%O)
83' OCM (40%O, 60%M)

1469' TF

FP: 291-483; 470-628
SIP: 1082-1058
HP: 2246-2238

BHT: 133 Deg F
Gravity API: 30
Chlor: -



<p>LS., crm., fmxln, sli fri-mod hd, some w pr intrgran por, ns, no odr, decr Sh., aa</p>
<p>LS., crm-tn, fmxln, mod hd-sli fri ip, chiky ip, ool ip, few pcs w pr intrgran por, ns, no odr, abund Sh., aa</p>
<p>LS., crm-tn, vfxln, mod hd, chiky ip, nvp, ns, no odr, abund Sh., vari col</p>
<p>LS., crm, fmxln, sli fri, chiky, ool ip, pr introol & intrxln por, ns, no odr</p>
<p>LS., crm-tn, vfxln, mod hd, nvp, ns, 75% Sh., gy-vari col</p>
<p>LS., aa, Sh., aa</p>