

**Fall & Associates**  
 Stake and Elevation Service  
 P.O. Box 222  
 Pretty Prairie, KS. 67570  
 785-243-7506

Date 1-29-18

Invoice Number 0125181

PIONEER OIL COMPANY

1-5

Clark Unit

Operator

Number

Farm Name

Sheridan-KS

5 9s 28w

33 0FNL 1634' FEL

County-State

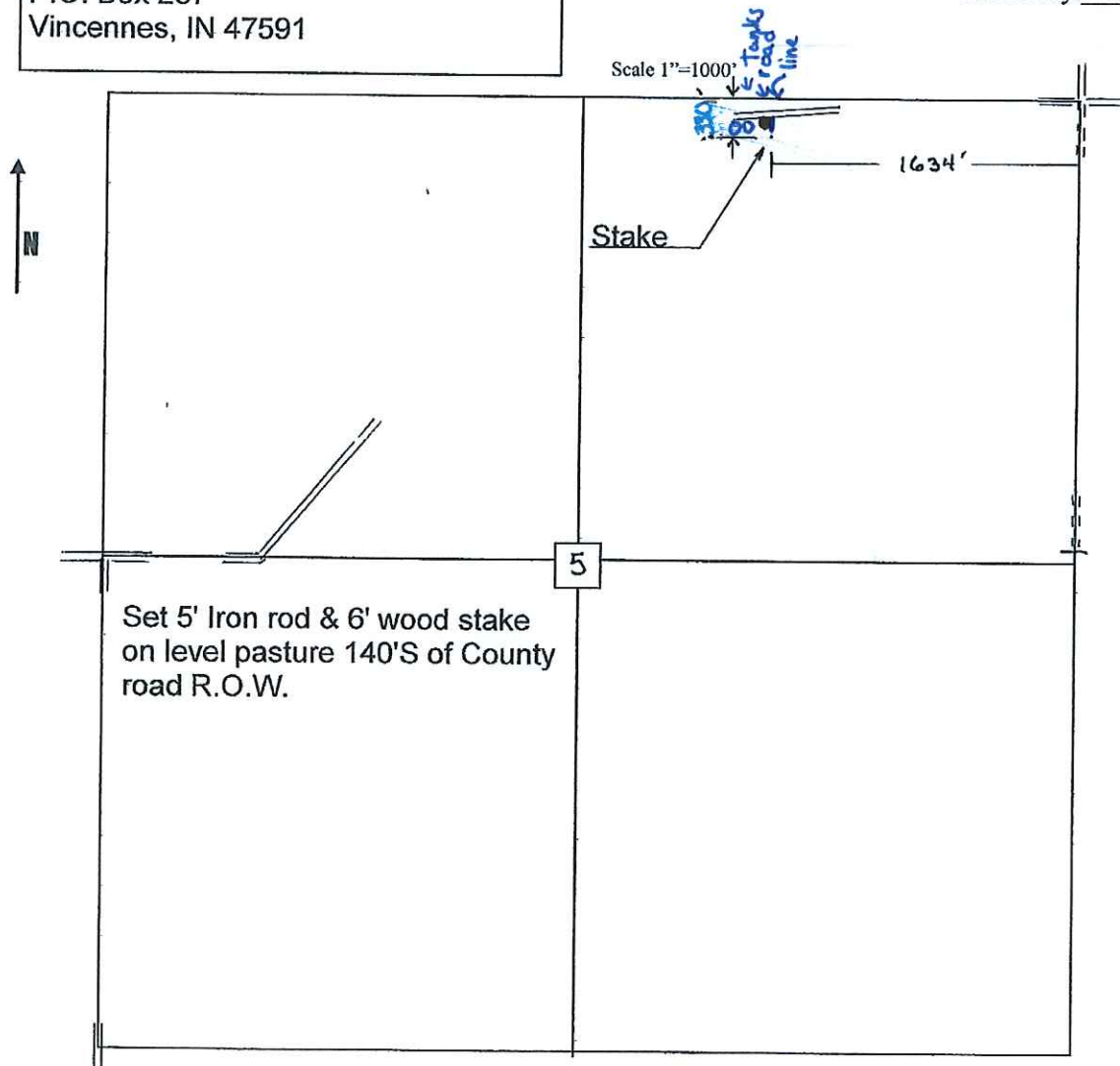
S T R

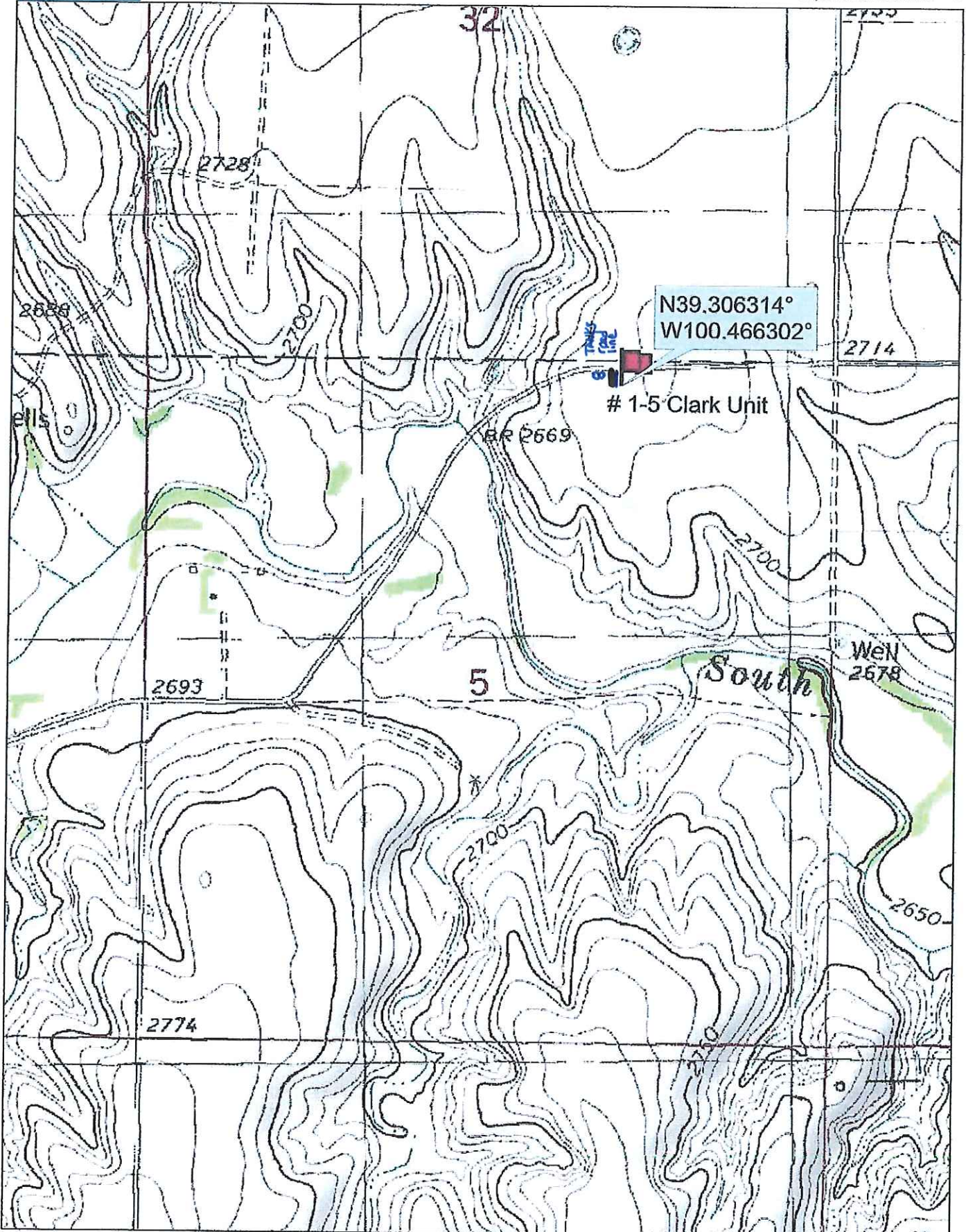
Location

Pioneer Oil Company  
 400 Main  
 P.O. Box 237  
 Vincennes, IN 47591

Elevation 2725 Gr.

Ordered By: Brandi





N39.306314°  
W100.466302°

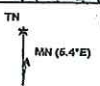
# 1-5 Clark Unit

South

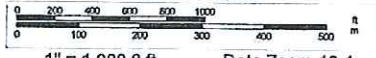
Data use subject to license.

© DeLorme. Topo North America™ 9.

www.delorme.com



Scale 1 : 12,000



1" = 1,000.0 ft

Data Zoom 13-1