

Terry McLeod

Consulting Geologist
 P.O. Box 503
 Wichita, Kansas 67201
 316-640-2440

GEOLOGIST'S REPORT DRILLING TIME AND SAMPLE LOG

OPERATOR Bear Petroleum, L.L.C.
 LEASE Higgins "B" WELL NO. 1
 FIELD SPIVEY-GRABS-BASIL
 LOCATION Sw Se Nw Sw
 SEC. 10 TWP. 30S RGE. 8W
 COUNTY Kingman STATE Kansas

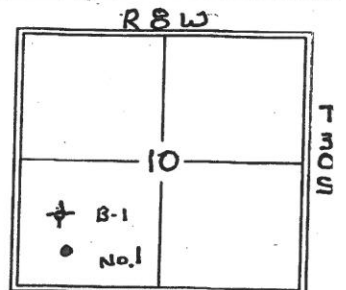
ELEVATION
 KB 1521
 DF _____
 GL 1514
 Measurements Are All
 From KB

CONTRACTOR ww drlg co. Rig 2.
 COMM: 12-8-2017 COMP: 12-15-2017
 RTD 4250' LOG TO 4248'
 SAMPLES SAVED FROM 3100' TO RTD
 DRILLING TIME KEPT FROM 3100' TO RTD
 SAMPLES EXAMINED FROM 3100' TO RTD
 GEOLOGICAL SUPERVISION FROM 3100' TO RTD.
 MUD UP 3000' TYPE MUD Chemical

CASING RECORD
 SURFACE 8 5/8" @ 208'
 PRODUCTION None

FORMATION	LOG		SAMPLE		STRUCT. COMP.
	TOP	DATUM	TOP	DATUM	
Heebner sh.	3178	-1657	3189	-1668	+6
Lansing	3410	-1889	3411	-1890	+3
stark sh.	3805	-2284	3805	-2284	+5
BKC	3902	-2381	3904	-2383	+4
Cherokee Shale	4050	-2529	4050	-2529	Flat
Mississippi	4138	-2617	4144	-2623	+3

ELECTRICAL SURVEYS
 ELL Wireline
 Dual Induction
 Density Neutron
 microlog - ELL -



REFERENCE WELL FOR STRUCTURAL COMPARISON Gulf Oil Corp Nat Thomas
Higgins, Sw Ne Sw Sw Sec 10-30S-8W, 1523' K.B

DRILL STEM TESTS

No.	Interval	FP/Time	ISIP/Time	FFP/Time	FSIP/Time	BH-FH	RECOVERY
1	4083' to 4163'	22 ⁺ 33 30"	64 ⁺ 45"	30-38 60"	62 ⁺ 60"	2053 ⁺ /1994 ⁺	1225' GAS in Pipe 65' mud NO SHOW.
2	4158' TO 4210'	26-30 30"	92 ⁺ 45"	26-38 60"	88 ⁺ 60"	2095 ⁺ /2096 ⁺	630' GAS in Pipe 60' mud w/trace oil-

REMARKS AND RECOMMENDATIONS with lack of shut in pressures and poor recoveries of oil + gas the High in "B" 1 was declared dry and abandon on 12-15-2017

Respectfully,

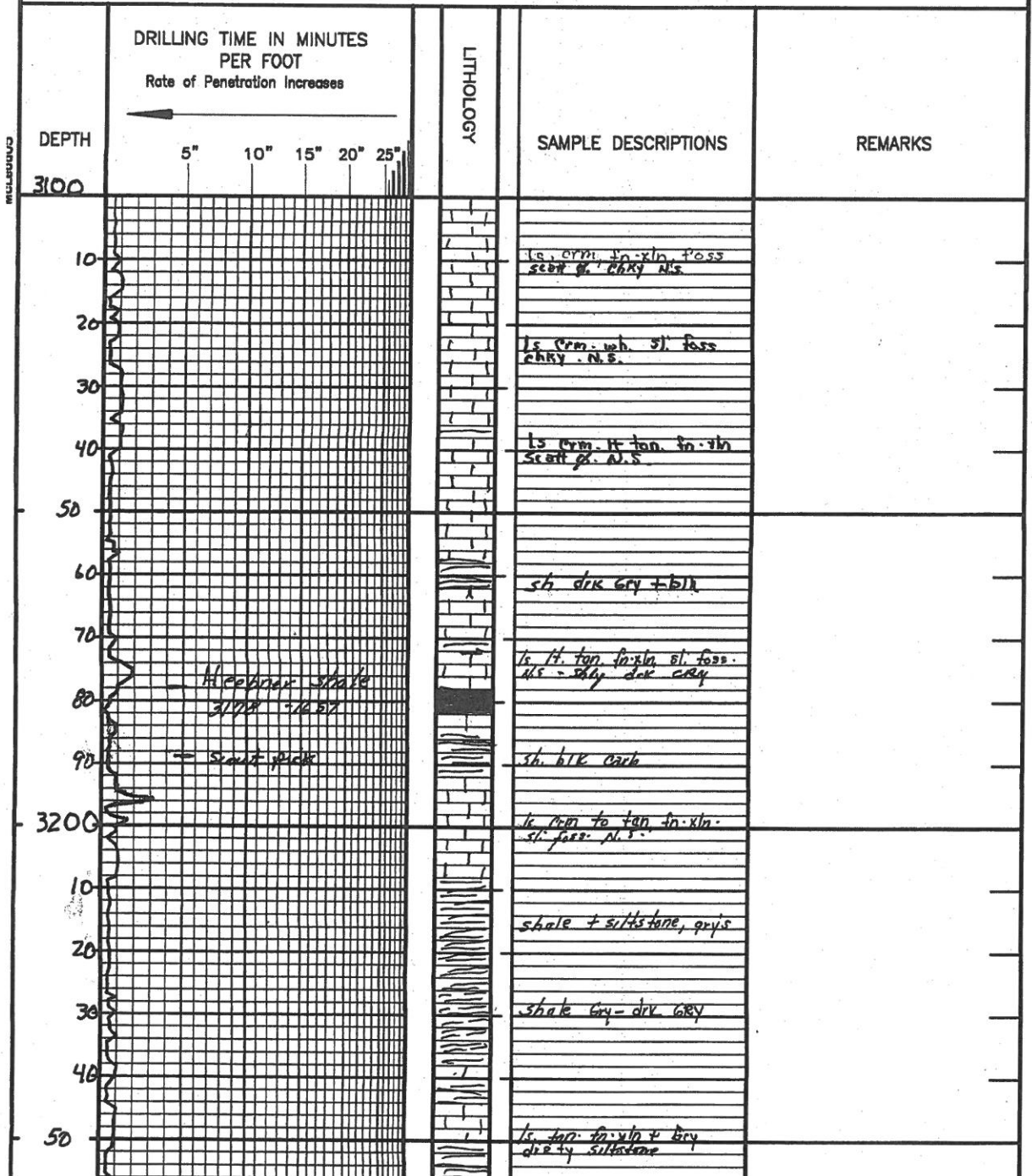
Jay L. McLeod
 Petroleum Geologist

LEGEND



Anhydrite Salt Sandstone Shale Carb sh Limestone Ool. Lime Chert Dolomite

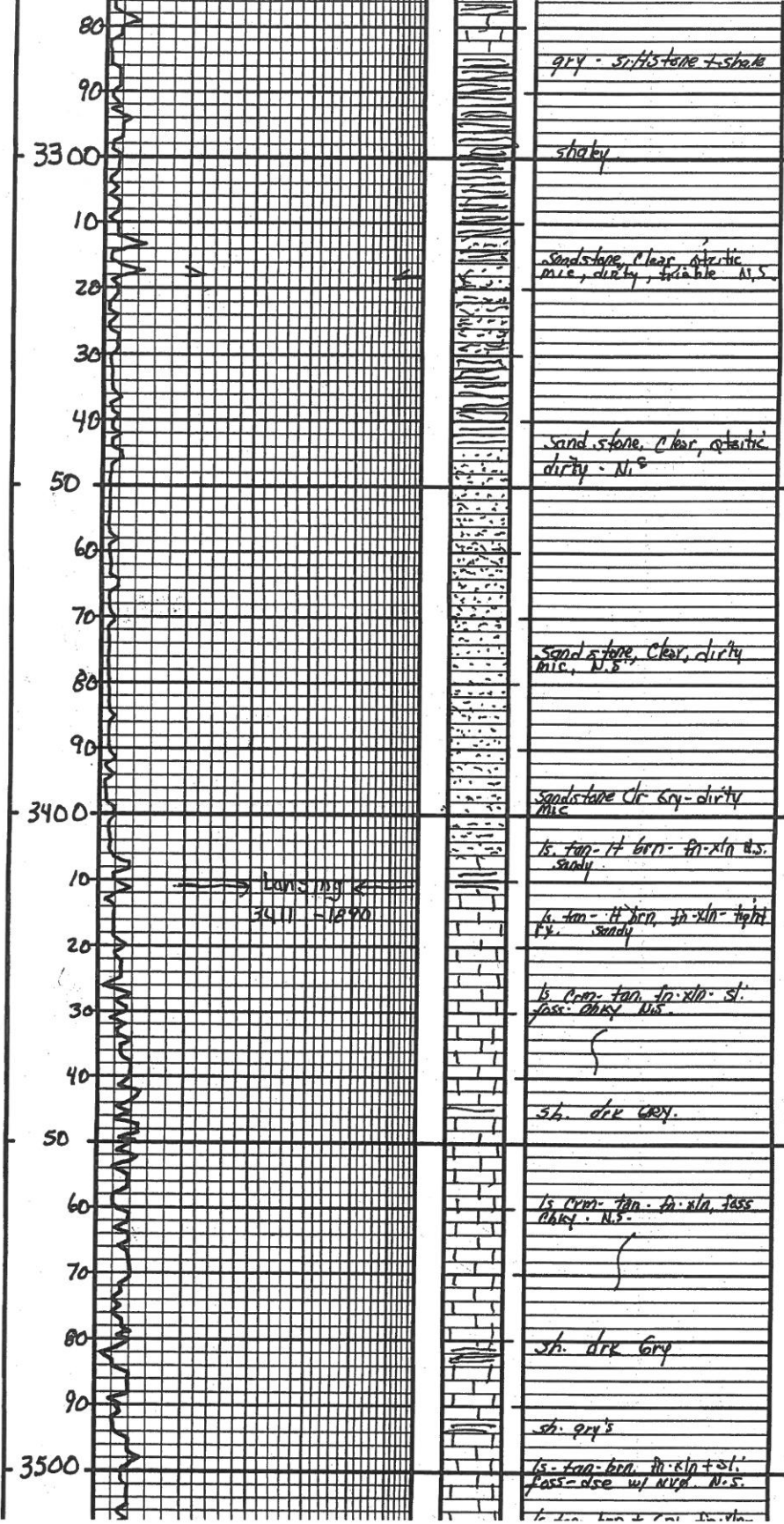
SCALE " = 100'

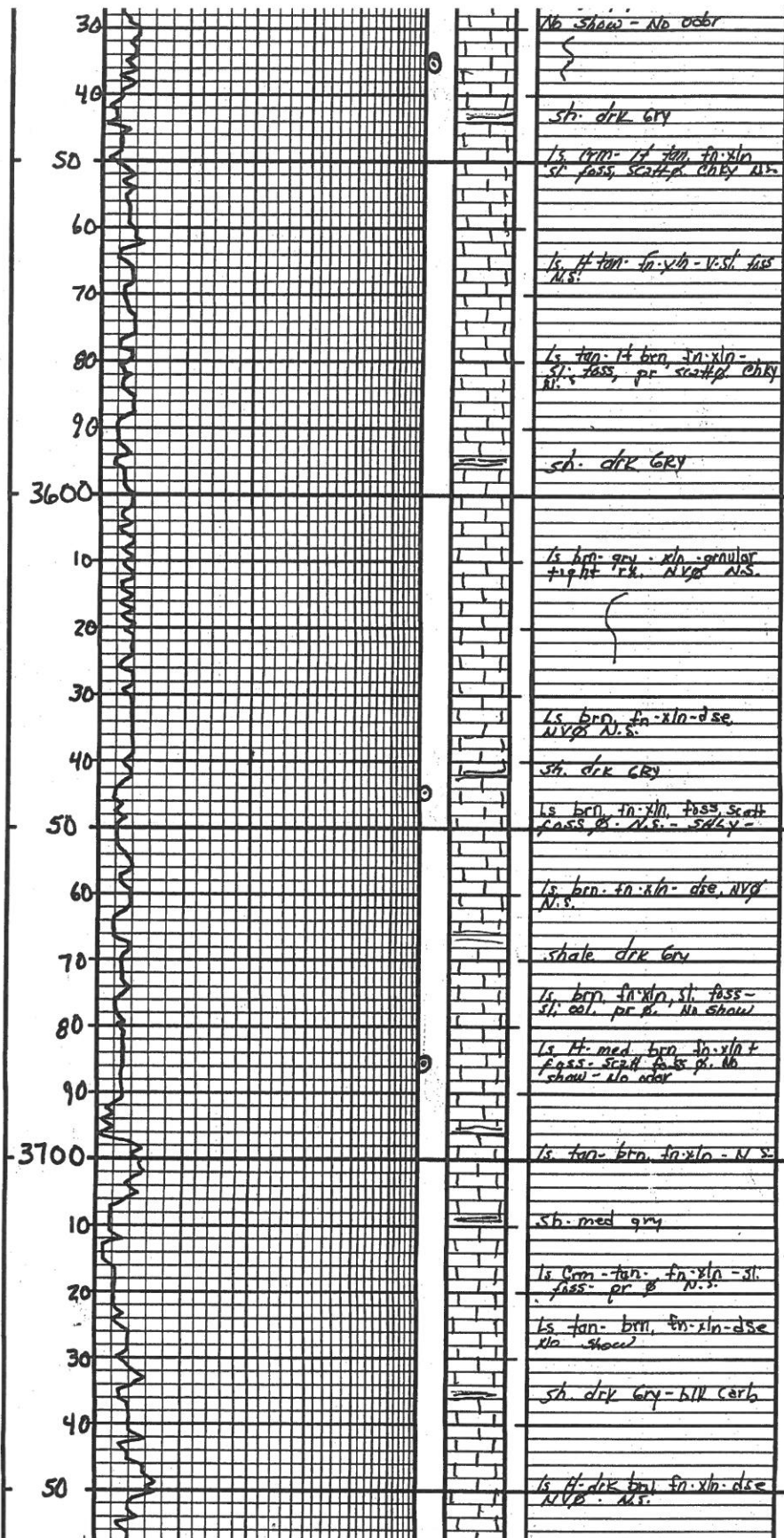


CORRECTION

Heeper shale
3110 - 3160

Scat pick





No show - No oolite

sh. drk gry

ls. tan. ft. tan. fn. xln. sl. foss. scatt. p. chky. N.S.

ls. ft. tan. fn. xln. v. sl. foss. N.S.

ls. tan. ft. brn. fn. xln. sl. foss. pr. scatt. p. chky. N.S.

sh. drk gry

ls. brn. gry. xln. granular tight l. N.S.

ls. brn. fn. xln. dse. N.S.

sh. drk gry

ls. brn. fn. xln. foss. scatt. p. N.S. - shaly -

ls. brn. fn. xln. dse. N.S.

shale drk gry

ls. brn. fn. xln. sl. foss. sl. ool. pr. p. No show

ls. ft. med. brn. fn. xln. + foss. scatt. p. N.S. show - No oolite

ls. tan. brn. fn. xln. - N.S.

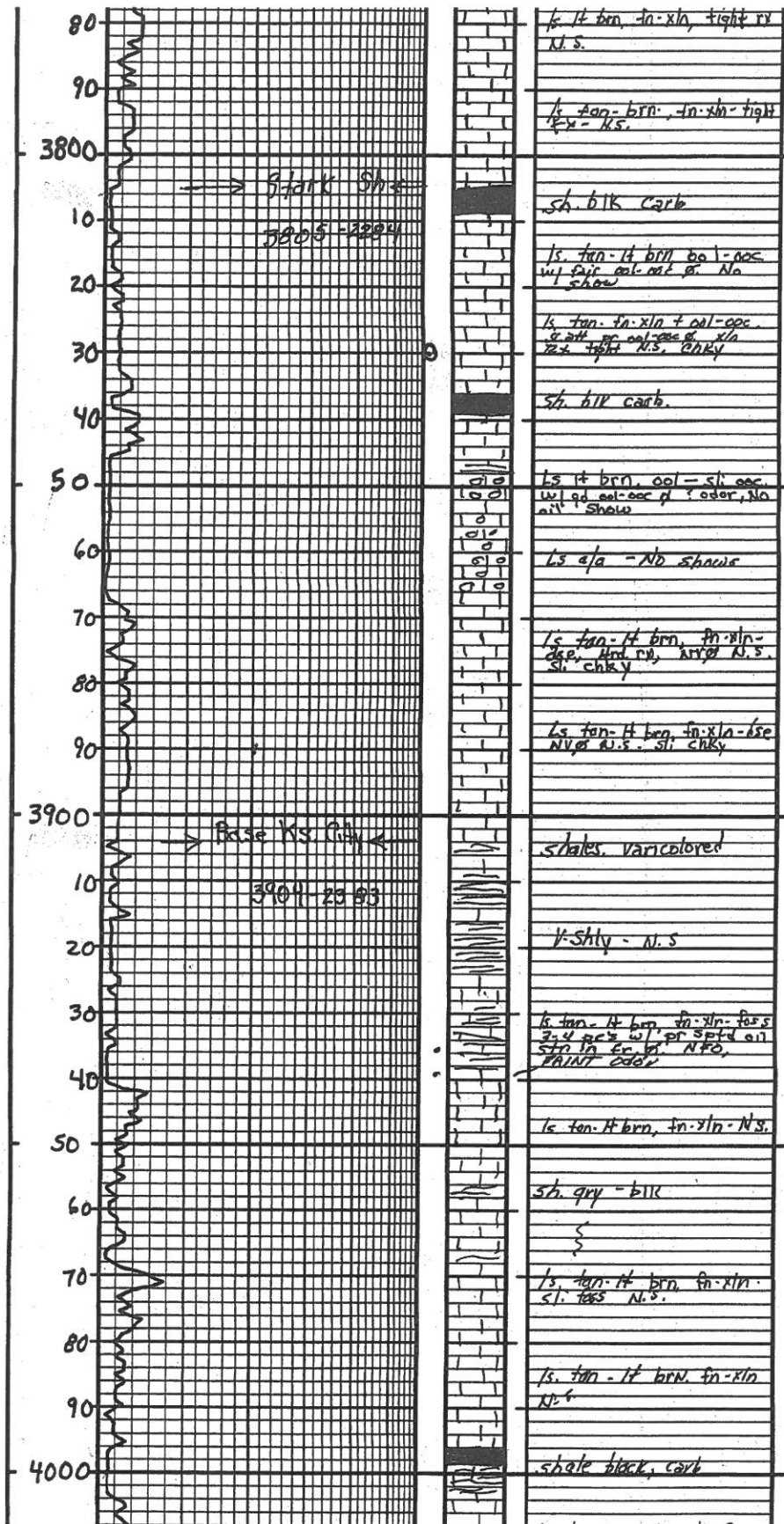
sh. med gry

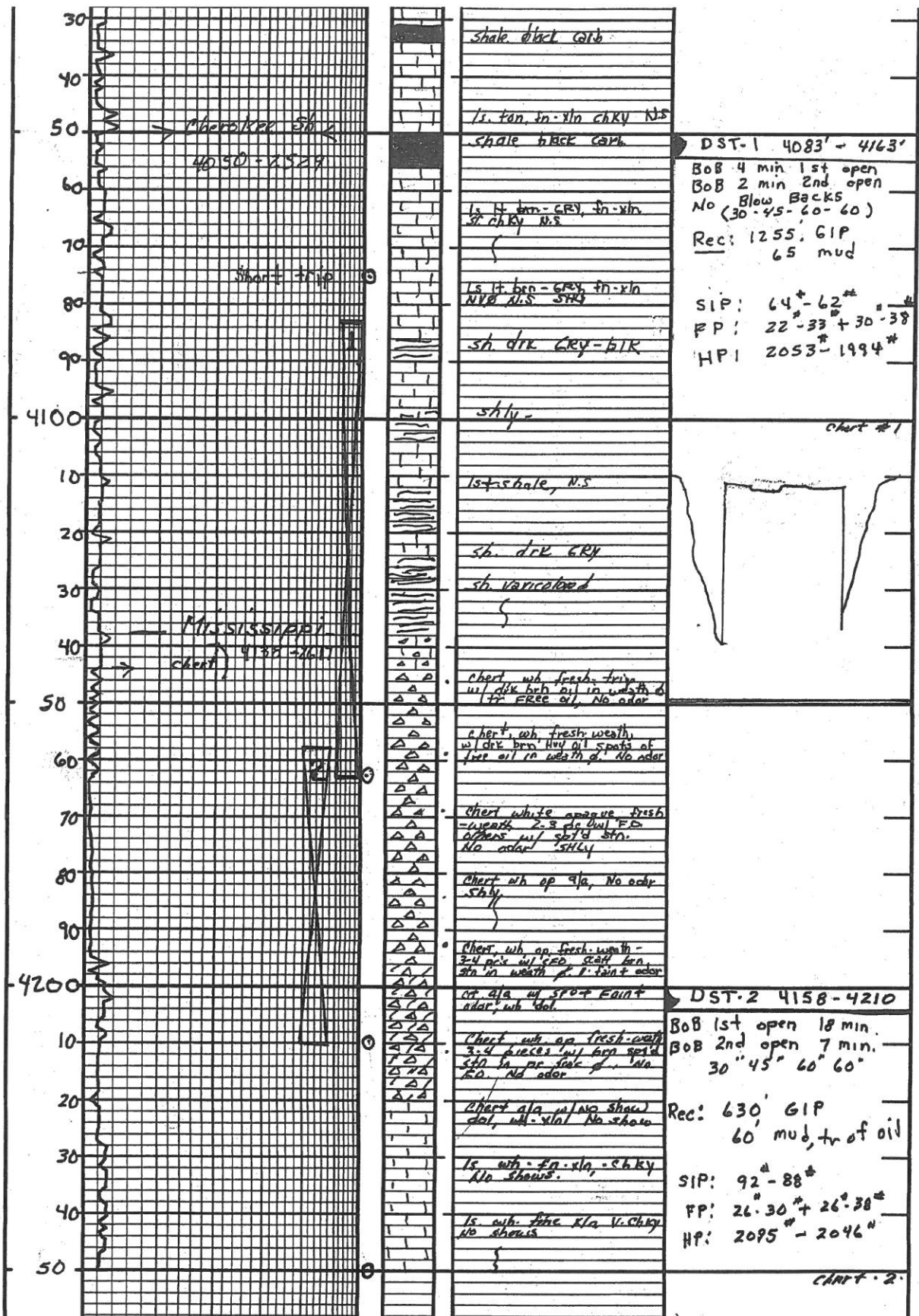
ls. brn. tan. fn. xln. sl. foss. pr. p. N.S.

ls. tan. brn. fn. xln. dse. No show

sh. drk gry - bill carb

ls. ft. drk brn. fn. xln. dse. N.S. N.S.





DEPTH	DRILLING TIME Minutes/Foot ← Rate of Penetration Increases	LITHOLOGY	SAMPLE DESCRIPTIONS	REMARKS

COMPANY Bear Petroleum LLC.
 LEASE Higgins "B"-1
 LOCATION Sw Se Nw Sw SEC. 10 TWP 30S RNG 8W
 COUNTY Kingman STATE Kansas

ELEVATION: 1521' K.B.