



# Woosley Operating Company LLC

Scale 1:240 (5"=100') Imperial  
Measured Depth Log

Well Name: **McCLAREN #1** Section: **TW33P0N #1** Range: **18 West** Location: **Kiowa County Kansas**  
 License Number: **15-097-213-03-00-06** Well Head: **15-097-213-03-00-06**  
 Spud Date: **December 19, 2017** Drilling Completed: **January 10, 2018**  
 Surface Coordinates: **400' FSL & 400' FWL** NE SW SW SW  
 Bottom Hole Coordinates: **400' FSL & 400' FWL** NE SW SW SW

Ground Elevation (ft): **2139'** K.B. Elevation (ft): **2151'**  
 Logged Interval (ft): **3800'** To: **5543'** Total Depth (ft): **5540'**  
 Formation: **Topoka >>> Viola**  
 Type of Drilling Fluid: **Chemical Mud**  
 Printed by **MUD LOG from WellSight Systems 1-800-447-1534 www.WellSight.com**

**OPERATOR**  
 Company: **Woosley Operating Company, LLC**  
 Address: **125 N. Market, Suite 1000, Wichita, KS 67202**

**GEOLOGIST**  
 Name: **Bill Klaver**  
 Company: **Woosley Operating Co. LLC**  
 Address: **125 N. Market, Wichita Kansas, 67202**

**COMMENTS**  
 Surface Casing: Set 9 joints of new 13 3/8" x 45#/ft casing at 289' KB (total 274') with 275 sx Common, 14# celloflake, 3% cc (by Basic) Plug down 5.5' on run on 12/21. Cement did circulate. Set 35 Jts 8 5/8" X 23#/FT intermediate at 149' 1' KB W/185 sx  
 Production Casing: None, test was plugged as D/A  
 Deviation Surveys: 3/4 at 290', 3/4 at 1065', 1/4 at 1566', 1/4 at 2100', 1/2 at 2603, 1/4 at 3104', 1/4 at 3606', 3/4 at 4290', 1/4 at 4416', Board: 4421.33' Strap: 4422.04', Strap .71' long.  
 Fossil Drilling Rig 3 Bit Record:  
 1) 17 1/2" RT in at 0' out at 21' 8.25 hours  
 2) 7 7/8" RR in at 0' out at 290', with blade reamer 6 hours  
 3) 7 7/8" Varel Tool Co. PDC in at 290' out at 5395'  
 4) 12 1/4" Milltooth RR in at 290' out at 1476'  
 5) 7 7/8" Varel HE 23 RR in at 5395' out at 5420'  
 6) 7 7/8" Varel HE 21 in at 5420' out at 5540'  
 Gas Detector: Pason Systems  
 Mud System: Mud-Co. Justin Whiting, Mud Engineer  
 DSTs: Triobte Testing, Ken Swinney, Lead Cason, Testers  
 E-Logs: ELI, Big Gus Franzenstiel, Engineer

**DSTs**  
 DST #1 Lansing (Stanton) 4398'-4416', 30"-60"-30"-60", Fair 6" blow (tool sid 8" after opening), Rec: 130' Mud, IHP 2130, IFP 83-85, ICP 815, FCP 388, FHP 2127, BHT 1105  
 DST #2 Altamont, 4854'-4900', 30"-60"-30"-60", WB, Rec: 10' Mud, IHP 2447, IFP 24-28, ICP 71, FFP 23-28, FCP 68, FHP 2420, BHT 115  
 DST #3 Mississippi, 4928'-5058', Misrun, packers failed, DP, Rec: 240' Mud  
 DST #4 Mississippi, 5080'-5058', 30"-60"-60"-60", SB GTS 21' into FFP, Rec: 4853' GIP, 130' GCM (5%G, 95%M), IHP 2532, IFP 72-83, ICP 1276, FFP 76-89, FCP 1007, FHP 2530, BHT 1144 deg.

**CREWS**  
 Daylights: Pablo Luma  
 Evening: Gary Axtell  
 Morning: Chris Statz

**ROCK TYPES**

Anhy	Shy dolo	Stst	Shale 1
Bent	Dol	Ss	Silty dol
Brec	Crim	Black sh	Dol lmst
Chrt	Gyp	Gry sh	Sh
Chst	Gyp lmst	Shale	Dol 2
Coal	Mst	Shaly	Granite wash
Congl	Salt	Shylst	Lmst
Sdy dolo	Shale	Ss 2	Calc dol
			Shale 3

**ACCESSORIES**

Chlorite	Pelec	Grysh
Dol	Pellet	Glyslt
Sand	Pisolith	Lms
Sily	Plant	Sandylms
	Fern	Sh
	Fuss	Ststn
	Oomoldic	
	STRINGER	
	Anhy	
	Coat	
	Dol	
	Ls	
	Mst	
	Stst	
	Ss	
	Ssstrg	
	Carbsh	
	Clysm	
	Dol	

**TEXTURE**

Bound	Chaiky
Cryxln	Earthy
Finexln	Graint
Littrgr	Littrgr
Microdn	Mudst
Packet	Wackest

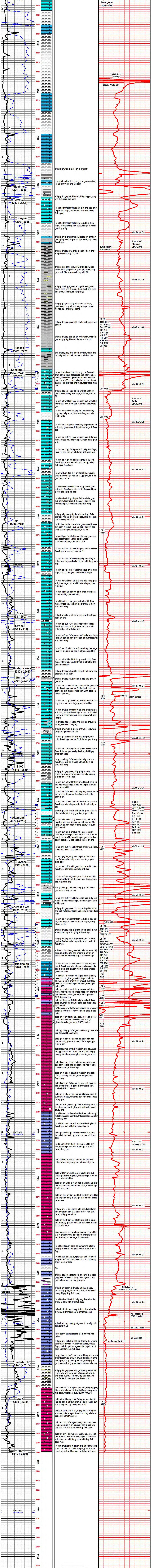
**MINERAL**

Anhy	Arg	Bent	Bit	Brecfrag	Calc	Carb	Chtdk	Chrt	Dol	Ferrel	Glau	Gyp	Mst	Nodule	Phos	Pyr	Salt	Sandy	Silt
------	-----	------	-----	----------	------	------	-------	------	-----	--------	------	-----	-----	--------	------	-----	------	-------	------

**FOSSIL**

Algae	Amph	Belem	Bioclst	Brach	Cephzoa	Coral	Crim	Echin	Fish	Forum	Fossil	Gastro	Ostra
-------	------	-------	---------	-------	---------	-------	------	-------	------	-------	--------	--------	-------

**Curve Track 1**  
 ROP (in/hr)  
 Gamma (API)



Woosley Operating Company LLC  
 McCLAREN #1  
 Sec 33 - Twp 38 S - Rge 8 W  
 400' FSL & 400' FWL  
 NE SW SW SW  
 Kiowa County, Kansas  
 API # 15-097-213-03-00-06  
 GL: 2139' KB 2151'