



**M. Bradford Rine**

*Consulting Geologist*

*Licensed/Certified: Kansas, Wyoming, AAPG/DPA, SIPES*

*Phone: (316) 250-5941*

**Scale 1:240 (5"=100') Imperial  
Measured Depth Log**

**Well Name:** Wetzel #1 - Carmen Schmitt, Inc.  
**API:** 15-047-21657-00-00  
**Location:** NW-SE-NE-NW, Section 17-26S-20W  
**License Number:** KCC #6569  
**Spud Date:** November 09, 2017  
**Surface Coordinates:** 881' FNL & 2108' FWL,  
of Section  
**Bottom Hole Vertical Wellbore**  
**Coordinates:**  
**Ground Elevation (ft):** 2244 Ft.      **K.B. Elevation (ft):** 2249 Ft.  
**Logged Interval (ft):** 3450 Ft.    **To:** 4764 Ft.    **Total Depth (ft):** RTD 4764 Ft. LTD 4756 Ft.  
**Formation:** Mississippian at Total Depth  
**Type of Drilling Fluid:** Chemical

**Region:** Edwards County, Kansas  
**Drilling Completed:** November 20, 2017  
**Results:** Prod. Casing  
Field: Wildcat

Printed by MudLog from WellSight Systems 1-800-447-1534 [www.WellSight.com](http://www.WellSight.com)

**Operator**

**Company:** Carmen Schmitt, Inc.  
**Address:** PO Box 47  
Great Bend, Kansas 67530-0047

**Geologist**

**Name:** M. Bradford Rine  
**Company:** Consulting Geologist, Kansas Lic. #204, Wyo #189, AAPG Cert. #2647  
**Address:** 100 South Main, Suite #415  
Wichita, Kansas 67202

**Remarks**

Based on sample observations, drill stem test results, and electric log evaluation, it was the decision of the Operator, to set production casing on the "Wetzel #1", on November 20, 2017.

Respectfully submitted,  
M. Bradford Rine, geologist

**Carmen Schmitt, Inc  
Wetzel #1  
Section 17-26S-20W, Edwards County, Kansas**



**Drilling Information**

**Rig: Murfin #16  
Pump: Emsco D375 6x14  
Drawworks: Cardwell Royale  
Collars: 497' 6-1/4 x 2-1/4  
Drillpipe: 4-1/2" 16.6# XH  
Toolpusher: Andrew Dinkel**

**Mud: Mudco (Justin Whiting)  
Gas Detector: None  
Drill Stem Tests: Trilobite (Leal Cason)  
Logs while Fishing: Perf-Tech (Various Operators)  
Fishing Tools: Kansas Fishing Tools (Unmanned)  
Logs: Pioneer (J. Henrickson)  
Water: Ag Irrigation Well on Lease  
Company Representatives:  
Office: Carmen Schmitt  
Field: Curtis Hitchmann**

## Casing Record, Bit Record, Deviation Surveys

### CASING:

Conductor: None

Surface: Ran 8 jts, 8-5/8" 23# new casing, set @ 349 ft. (Quality) Cement with 250 sx 80/20 3%CC, 2% gel. Cement did circulate. Plug down at 7:00 pm, on November 10, 2017. Drilled out at 3:00 am, on November 11, 2017.

Production: Ran 113 jts, 5-1/2" casing with 37.22' shoe joint with a float shoe on bottom, numerous centralizers and baskets. Tagged up 3 ft shallow from TD, circulated casing to TD, then picked up 1 foot off bottom and set in slips. (Swift) Cement 30 sx in RH and 20 sx in MH. Single Stage Job. Cement casing with 500 gal mud flush and 20 bbls KCL flush. Followed by 375 sx SMD cement @ 11.2 ppg, followed by 175 sx SMD @ 13.5 ppg with gas stop in mix. Displaced plug with 115.3 bbls, lift pressure was 1200#. Circulated 25 bbls to pit. Landed plug at 1800#, plug held. Rig released 7:15 PM on 11/20/17.

### BITS:

No.	Size	Make	Model	Depth In	Depth Out	Hours
1	12-1/4	Reed	TC11rr	0	352	4.5
2	7-7/8	HTC	GX20C	352	4403	88.5
3	7-7/8	HTCrr	GX20C	4403	4764	25.0

### DEVIATION SURVEYS:

Deviation:	Depth:	Deviation:	Depth:
0.25*	352'	0.75*	4746'
0.50*	3166'		

### Daily Drilling Status

Date:	Operations/Depth/Comments
11-08-17	MIRT @ 0'
11-09-17	MIRT, RU, Spud @ 0'
11-10-17	Drilling @ 660'
11-11-17	Drilling @ 2350'
11-12-17	Drilling @ 3125'
11-13-17	Drilling @ 3870'
11-14-17	Fishing, Stuck @ 4303'
11-15-17	Stuck, Spotting Oil @ 4303'
11-16-17	Drilling @ 4430'
11-17-17	Circulating for Samples @ 4729'
11-18-17	Trip Out of Hole for DST #2 @ 4754'
11-19-17	On Bottom With DST 3 @ 4764'
11-20-17	Trip Out of Hole to Lay Down Pipe @ 4764' Run Casing and Cement, Job Complete 7:15 PM

	Results:	Oil Well		(Well A)	D&A	Well B)	D&A		
	Carmen Schmitt, Inc.			Virginia Oil		Herbert G Davis			
	Wetzel #1			Millheiser #1		Russell #1-18			
	881'FNL & 2108'FWL			330'FNL & 330'FEL		C-SW-NE			
	Sec. 17-26S-20W			Sec. 17-26S-20W		Sec. 18-26S-20W			
	2249 KB			2247 KB		2253 KB		Well A	Well B
Formations	Sample	E-Log	Datum	E-Log	Datum	E-Log	Datum	Comparison(s)	
Anhydrite	1288	1286	963	1282	965	1300	953	-2	10
B/Anhydrite	1307	1307	942	1300	947	1319	934	-5	8
Topeka	3682	3680	-1431	3685	-1438	3693	-1440	7	9
Heebner Sh.	3999	3996	-1747	3998	-1751	4012	-1759	4	12
Toronto	4025	4021	-1772	4024	-1777	4032	-1779	5	7
Brown Lime	4114	4108	-1859	4117	-1870	4126	-1873	11	14
Lansing	4120	4115	-1866	4125	-1878	4134	-1881	12	15
Muncie Creek Sh.	4276	4270	-2021	4282	-2035	4294	-2041	14	20
Stark Sh.	4387	4386	-2137	4390	-2143	4400	-2147	6	10
B/Kansas City	4454	4450	-2201	4470	-2223	4460	-2207	22	6
Marmaton	4458	4452	-2203	4475	-2228	4462	-2209	25	6
Pawnee	4568	4566	-2317	4580	-2333	4582	-2329	16	12
Ft. Scott	4628	4626	-2377	4640	-2393	4647	-2394	16	17
Cherokee Sh.	4652	4648	-2399	4658	-2411	4674	-2421	12	22
Mississippian	4733	4730	-2481	4752	-2505	4764	-2511	24	30
Total Depth	4764	4756	-2507	5338	-3091	4877	-2624	584	117

**DST #1: 4667-4746 (Mississippi)**

**Times: 30-45-60-90**

**Initial Open: Stg, b.o.b. 16 min, no b.b.**

**Final Open: Stg, b.o.b. 20 sec, no b.b.**

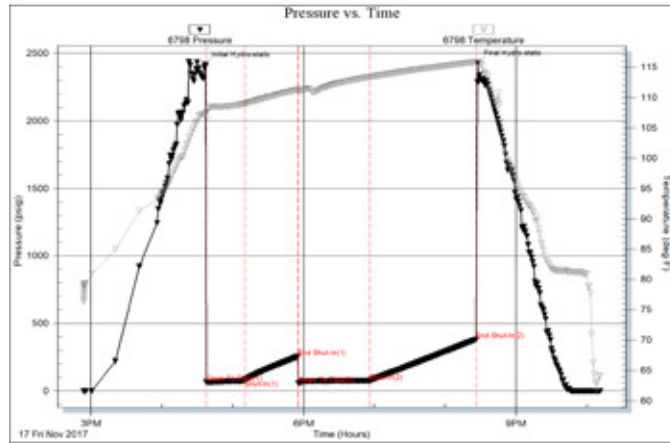
**Rec: 2520' gas in pipe, 60' SGCM 2%gas**

**IHP: 2417 FHP: 2427**

**IFP: 63-83 FFP: 54-74**

**ISIP: 253 FSIP: 381**

**BHT: 116°F**



**DST #2: 4667-4754 (Mississippi)**

**Times: 15-30-60-90**

**Initial Open: Stg, Blow b.o.b. 30 sec, gts 4 min  
(see rates below) return blow bled off to no blow**

**Final Open: Stg, b.o.b. instant (see rates below),  
wk surf return blow**

**Rec: 4365' gas in pipe, 283' Total Fluid**

**165' SOGCM: 5%g 10%o 0%w 85%m**

**118' SGWOCM: 16%g 20%o 14%w 50%m**

**IHP: 2438 FHP: 2388**

**IFP: 508-372 FFP: 283-357**

**ISIP: 1512 FSIP: 1510**

**BHT: 114°F**

**Gas Gauges:**

**(gas lights, but will not keep burning)**

**IF 10 min 237.0MCFGPD 1/4" choke**

**15 min 742.0MCFGPD 1/2" choke**

**FF 10 min 708.0MCFGPD 1/2" choke**

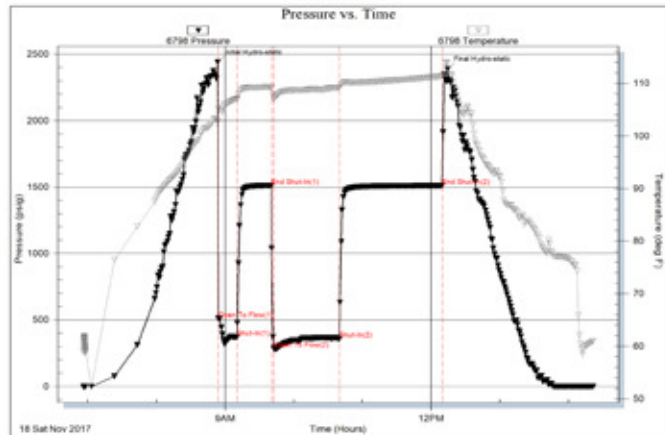
**20 min 957.0MCFGPD 1/2" choke**

**30 min 1,005.0MCFGPD 1/2" choke**

**40 min 1,011.8MCFGPD 1/2" choke**

**50 min 1,018.5MCFGPD 1/2" choke**

**60 min 1,018.5MCFGPD 1/2" choke**



DST #3: 4754-4764 (Mississippi)

Times: 15-30-60-90

Initial Open: Stg Blow, b.o.b. 30 sec, gts 8 min, 6" return blow

Final Open: Stg Blow, b.o.b. instant, return blow stg,  
gas-mud-oil to surface in surges then bled off to gas only

Rec: (reversed fluid out of hole, but recovered less than a barrel of fluid,  
most fluid flowed to pit during FSIP)

Recovery: 4738 ft Total Fluid, includes 4618' GCO (20% gas, oil 36.6\* API)  
flow to surface and two stands of water, 120',  
below circ. sub, 80,000 ppm Chl)

IHP: 2599 FHP: 2363

IFP: 262-336 FFP: 401-796

ISIP: 1507 FSIP: 1513

BHT: 130°F

Gas Gauges: (gas lights and burns well)

IF 10 min 53.9M CFGPD 1/2" choke

15 min 67.4M CFGPD 1/2" choke

FF 10 min 44.4M CFGPD 1/4" choke

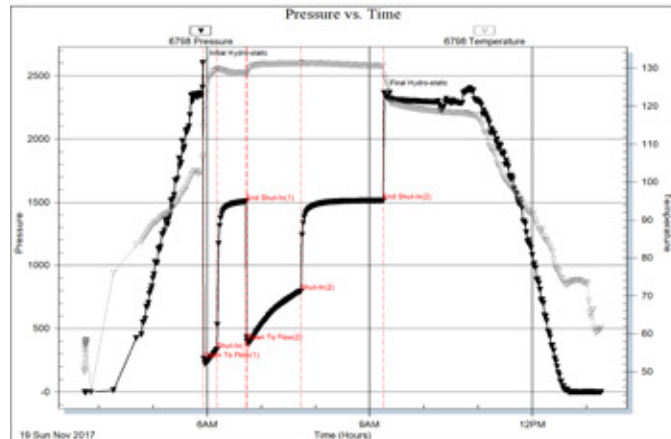
20 min 63.4M CFGPD 1/4" choke

30 min 71.3M CFGPD 1/4" choke

40 min 55.5M CFGPD 1/4" choke

50 min 39.6M CFGPD 1/4" choke

60 min 31.7M CFGPD 1/4" choke



### Rock Types

Congl granite wash	Bent	Dol 1	Mrlst	Ss
dol ls limey	Brec	Dol	Salt	Till
New symbol	Cht	Gyp	Shale	Sltysh
Dolom ls limey	Clyst	Igne	Shcol	Shlysiltst
New symbol	Black shale	Lmst	Shgy	Sandyls
Anhy	Congl	Meta	Siltst	

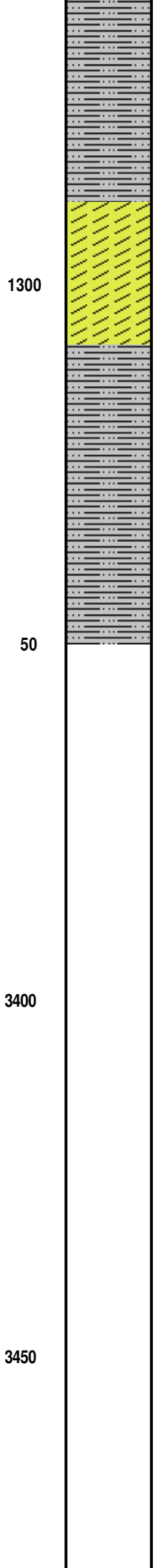
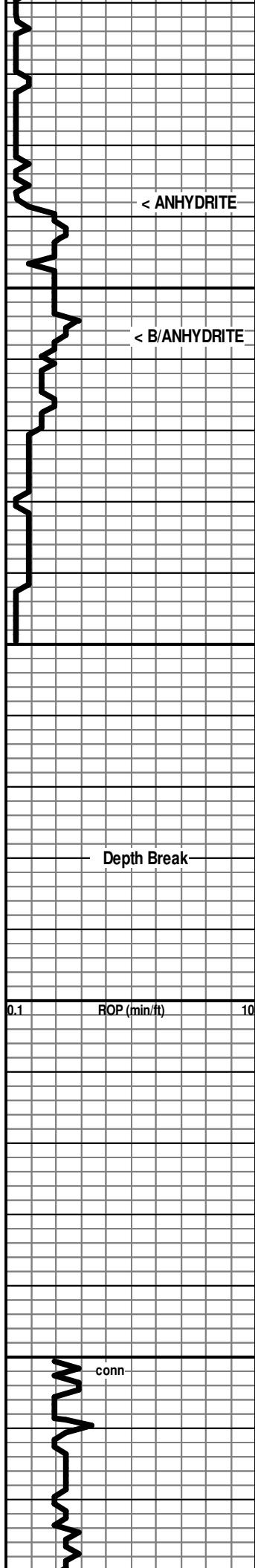
### Accessories

<b>MINERAL</b>	Gyp	<b>FOSSIL</b>	Ostra	Siltstrg
Anhy	Hvymin	Algae	Pelec	Ssstrg
Arggrn	Kaol	Amph	Pellet	<b>TEXTURE</b>
Arg	Marl	Belm	Pisolite	Boundst
Bent	Minxl	Bioclst	Plant	Chalky
Bit	Nodule	Brach	Strom	Cryxln
Brecfrag	Phos	Bryozoa	<b>STRINGER</b>	Earthy
Calc	Pyr	Cephal	Anhy	Finexln
Carb	Salt	Coral	Shale	Grainst
Chtdk	Sandy	Crin	Bent	Lithogr
Chtlt	Silt	Echin	Coal	Microxln
Dol	Sil	Fish	Dol	Mudst
Feldspar	Sulphur	Foram	Gyp	Packst
Ferrpel	Tuff	Fossil	Ls	Wackest
Ferr		Gastro	Mrst	
Glau		Oolite		

### Other Symbols

<b>OIL SHOW</b>	Even	Dead	<b>INTERVAL</b>
Oil & gas show	Spotted	Gas	Core
Gas show	Trace show or ques		Dst

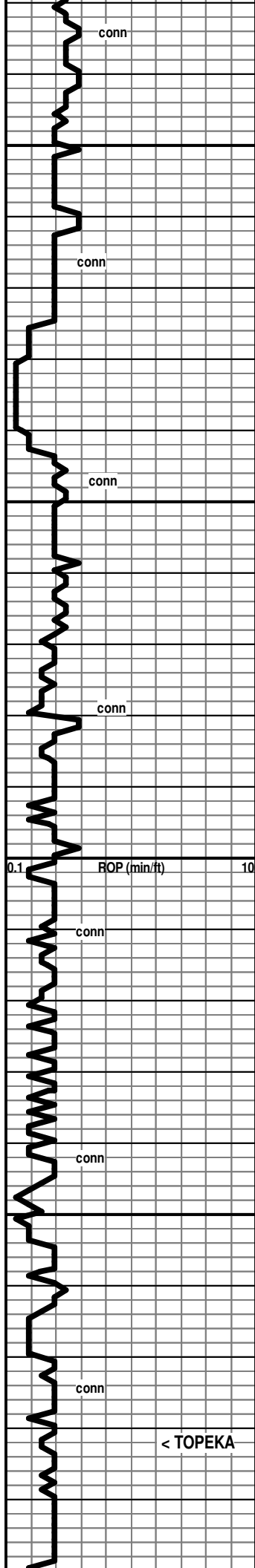
ROP (min/ft) ROP (min/ft) ———	Depth	Lithology	Geological Descriptions	Remarks
0.1      ROP (min/ft)      10	1200			
	50			



← 1288 (+961)  
Anhydrite Interval, based on drill time only!  
← 1307 (+942)

\* Displace and Mud up @ 3388 Ft!





3500

3550

3600

3650

3700

conn

conn

conn

conn

conn

conn

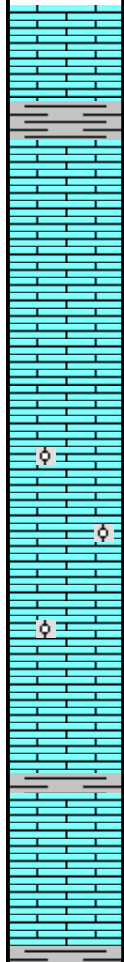
conn

ROP (min/ft)

0.1

10

< TOPEKA



Ls wh-cr, fn xln, chalky in pt, fn xln, pr xln por in pt, foss

Sh gy

Ls cr-gy, fn xln, pr xln pr, scatt pp pores, foss toabund foss

Ls wh-cr-gy, fn xln, chalky & soft in pt, pr xln por in pt, dns in pt, foss to abund foss, ool in pt

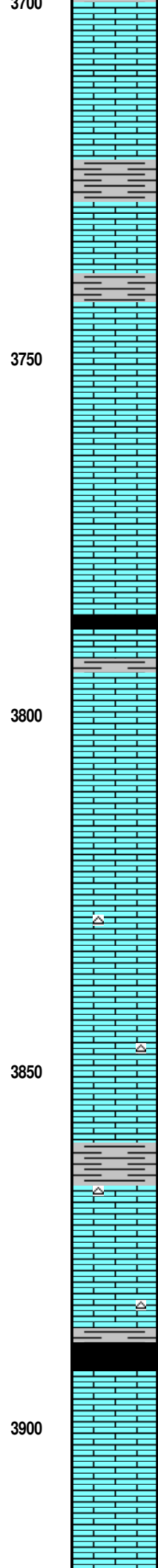
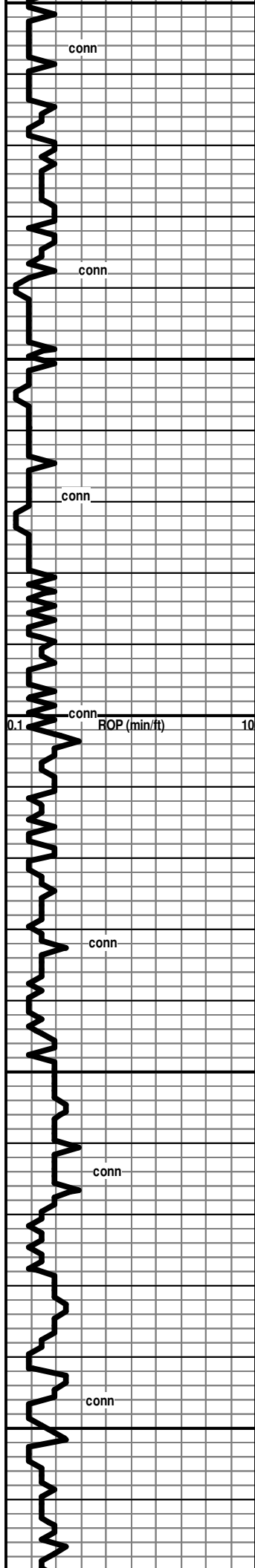
Ls wh-cr, fn xln, dns, foss

Sh gy

Ls wh-cr, fn xln, dns, foss

Sh gy

← 3882 (-1433)



Sh gy

Ls wh-cr-tan, fn xln, chalky in pt, pr xln por-dns in pt, foss

Sh gy-dk gy

Ls wh-cr-tan, fn xln, chalky in pt, pr xln por-dns in pt, foss

Sh gy-dk gy

Ls wh-cr-tan, fn xln, chalky in pt, pr-fr xln por in pt, foss

Ls wh-cr-tan, fn xln, chalky in pt, pr-fr xln por in pt, foss

Ls wh-cr-tan, fn xln, chalky in pt, pr-fr xln por in pt, foss

Sh black, carb

Sh gy-dk gy

Ls wh-cr-tan, fn xln, soft & chalky in pt, pr-fr xln por in pt, foss-abund foss

Ls wh-cr-tan-gy, fn xln, some chalky-subchalky, pr-fr xln por in pt, foss-abund foss, chert: fresh-subgrainy text, gy-tan, foss in pt

Ls wh-cr,fn xln, pr xln por, scatt pp pores, foss

Ls wh-cr,fn xln, pr-fr xln por, scatt pp pores, foss, chert: gy-tan, sub opa, spiculitic

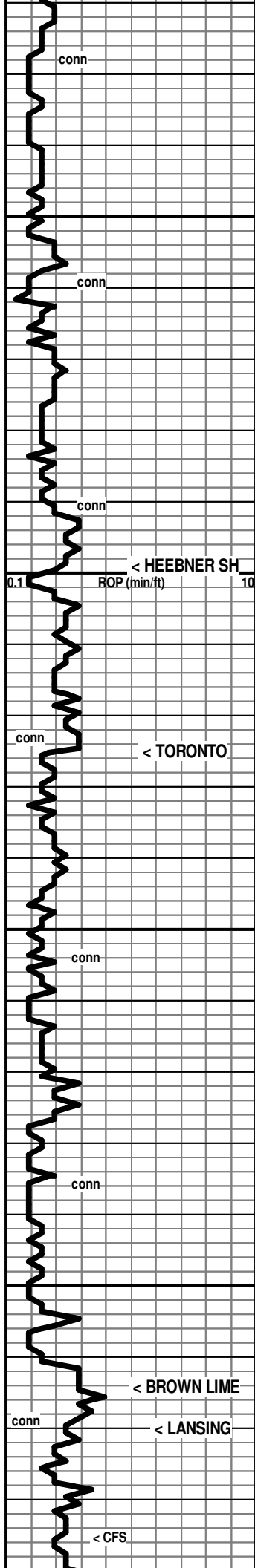
Sh dk gy-black, carb (some in 3920' & 3940' spl)

Ls wh-cr-tan, fn xln, pr xln por in pt, dns in pt, chalky in pt, foss

Mud Check, Drlg @ 3857':

Vis	Wt	WL	LCM	PV	YP
69	9.0	7.6	.5	22	23
Chl	Hd	pH	Solids		
6900	30	10.0	4.6		

7:00 AM, November 13, 2017



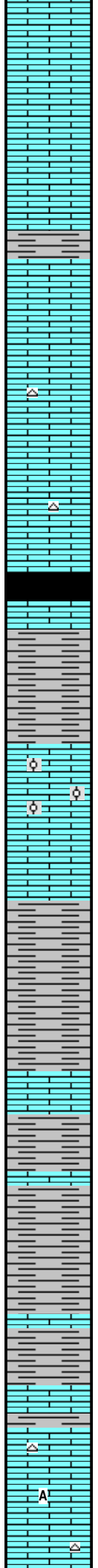
3950

4000

4050

4100

WOB 35k  
RPM 80  
PP 800  
SPM 62



Ls wh-cr-pl gy, fn xln, pr-fr xln por in pt, chalky in pt, dns in pt, foss

Sh gy

Ls wh-cr-tan, fn xln, some chalky pcs, pr-fr xln por in pt, scatt pp pores, dns in pt, foss

Ls wh-cr-tan, fn xln, some chalky pcs, pr-fr xln por in pt, scatt pp pores, dns in pt, foss, trace of chert: subgrainy text, gy-tan, subopaq

<----- 3999 (-1750)  
Sh black, carb (some in 4010' spl, some in 4020' spl)

Ls cr, fn xln, dns, foss

Sh gy-red-grnsh

<----- 4025 (-1776)

Ls cr-gy, fn xln, pr-fr xln por in pt, sli chalky in pt, dns in pt, foss, ool in pt

[No Show]

Sh gy-gm

Ls wh-cr, fn xln to blocky md xln, dns, foss

Sh pl gy-gy-dk gy to grnsh gy

Ls wh-cr, fn xln to blocky md xln, dns, foss

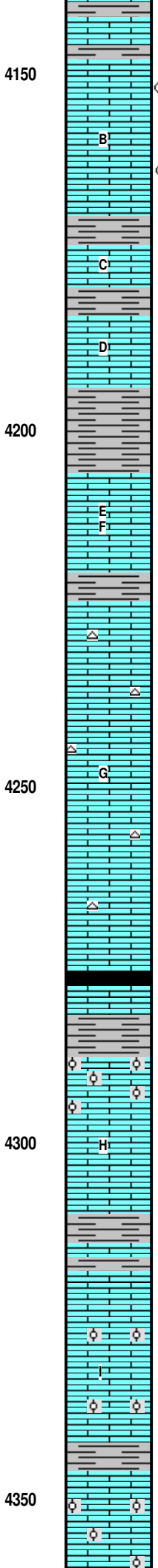
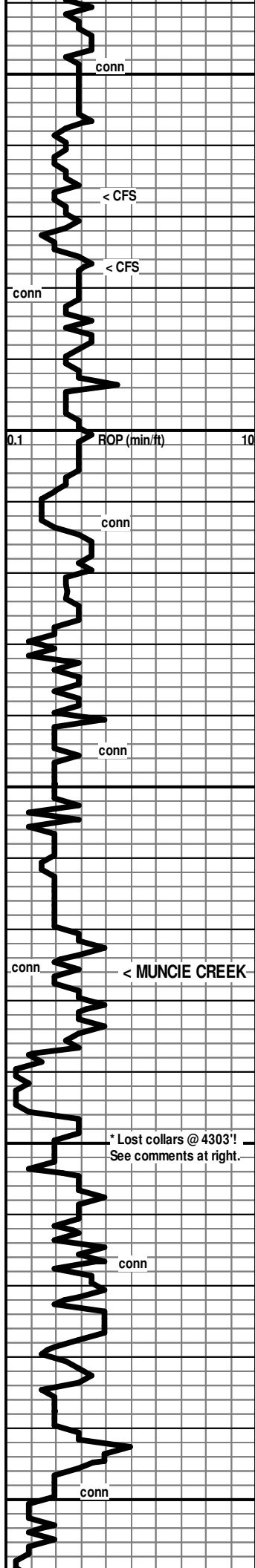
Sh pl gy-gy-dk gy to grnsh gy

<----- 4114 (-1865)  
Ls cr-gy-brn, vfn-fn xln, dns

<----- 4120 (-1871)

Ls wh-cr-tan, fn xln, some chalky, mostly pr xln por to dns, scatt pp pores, scatt rhombic transl calcite patches, foss, chert: pl gy, fresh, subopaq

[No Show]



Ls wh-cr-tan, vfn-fn xln, dns

Sh gy

<4148-4157: Ls cr, fn xln, some dolom text, pr xln por, scatt pp pores, foss

Show Descr. —————>

<4157-4167: Ls cr, fn xln, pr xln por, Rr pp pores, foss in pt

[No Odor, few pcs total with Rr spots of Fluor, No show oil, No gas bubbles, from above?]

<4167-4170: Ls cr-gy, fn xln pr-fr xln por, scatt pp pores & sm vugs, foss, abund shale in spls

Sh gm-gy-black

Ls cr, fn xln, pr xln por to dns, foss

Sh gy-dk gy

Ls wh-cr-gy, fn xln, pr xln por-dns, foss in pt

Sh gy-dk gy-gmish gy

Ls mostly wh-cr, some tan, fn xln, pr xln por, foss

Sh gy

Ls wh-cr-tan, fn xln, pr xln por to dns, foss, chert: fresh cr-gy, subtransl

Ls wh-cr, v fn-fn xln, mostly dns, some pr xln por, some chalky, foss in pt, chert: fresh, gy, subtr

Ls wh-cr-tan, vfn-fnxln, mostly dns, sli foss, cherty

←————— 4276 (-2027)

Sh black, carb

Sh gy-gmish gy

\*Geologist had rig catch 30 & 60 min spls after much fishing and after circulation was broken during fishing operations! A few pcs (poorly represented) of very oom Ls cr-tan-gy was found in spls that were mostly shales.

[No Shows were detected in the oom Ls spls recovered. See above description]

Ls wh-cr, vfn-fn xln, dns, foss in pt

Sh gy-gm

Ls wh-cr, fn xln, subchalky in pt, dns in pt, foss in pt, ool in pt

Ls wh-cr, fn xln, subchalky in pt, dns in pt, foss in pt, ool in abund

[Above 4157': (in 4160' spl): V Fnt flashy Odor, V Low % pcs with patchy mod-brt Fluor, No show of oil or gas bubbles under white light, trace of colorless fluor drops on crush under black light]

\*4303 Ft: Loosing pump pressure. Rig suspects a cracked collar. Trip Out of Hole @ 4303 ft, to look for problem. Came out of hole light. Left 12 collars in hole. Top of fish at 3950'. Go in with overshot. On fish, but stuck. Perf-tech called out. Shot out bit and float, free pointed, and attempted to off casing. Could not part pipe. Still Stuck in hole with no progress. Pumped down 77 bbls crude oil (from Horacek Lease). Spotting onto backside at intervals, and working pipe every hour. Perf-Tech called back out to locate free points. Shot at 4164' with questionable results. Begin TOOH with weight indicator suggesting complete drill string together. Pulled fish, complete with bit. Lay down 8 collars, pick up 8 replacements. Remaining collars inspected and magnafluxed. Trip back in hole, CTCH, and return to drilling.

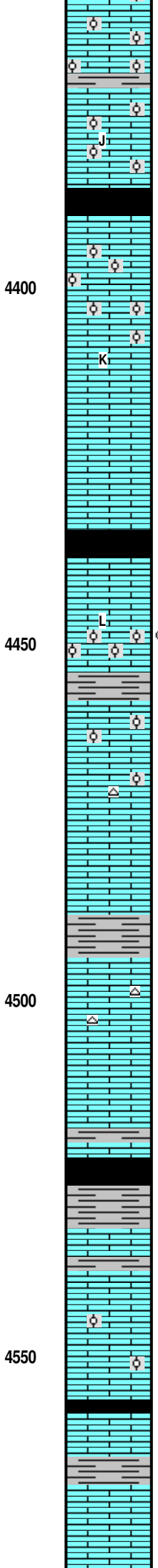
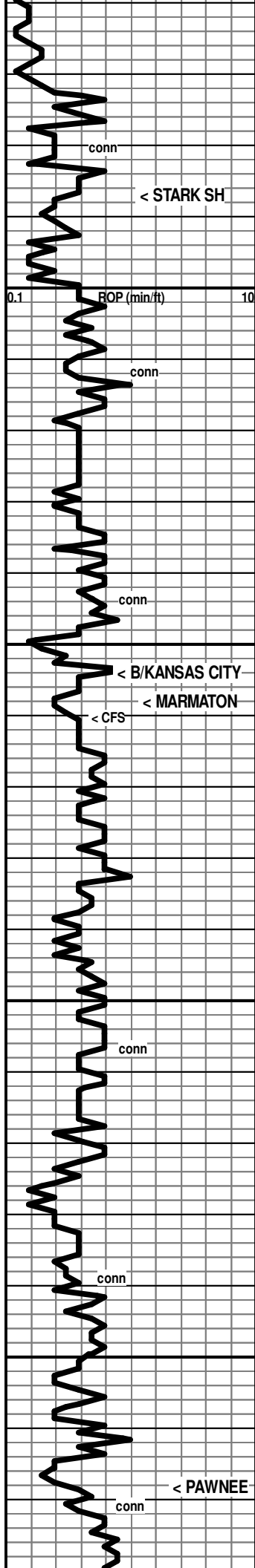
7:00 AM, November 14, 2017  
7:00 AM, November 15, 2017

Mud Check, Fishing, TD presently @ 4303':

Vis	Wt	WL	LCM	PV	YP
58	9.3	9.2	.5	16	18
Chl	Hd	pH	Solids		
5100	30	10.0	6.8		

Mud Check, TOOH @ 4303':

Vis	Wt	WL	LCM	PV	YP
88	9.0	7.2	.25	20	25
Chl	Hd	pH	Solids		
7100	20	9.5	4.6	*77 bbl crude added	



Ls wh-cr, fn xln, subchalky in pt, dns-p rxln por in pt, foss in pt, ool in abund (weath'd to oom in pt)

Sh gy

Ls cr-tan-gy, fn xln, mealy text in pt, pr vis xln por, mostly ool, scatt oom & weathering, foss

← 4387 (-2138)

Sh black, carb

Ls cr-tan-gy, fn xln, pr vis xln por, chalky in patches, mostly ool, scatt oom & weathering, foss

Ls cr-tan, vfn to fn xln, dns

Ls wh-cr-tan, vfn-fn xln, subchalky in pt, dns in pt, foss in pt

Sh black, carb

Ls wh-cr, fn xln, dns to chalky, sli foss

Ls wh-cr-tan, fn xln, chalky in patches & pcs, abund ool & oom, foss in pt

[No Odor, Scatt patches of dull-mod fluor in chalky pcs, NSO, No show of gas bubbles, No stn]

← 4454 (-2205)

Sh gy

← 4458 (-2209)

Ls cr-tan, fn xln, dns with Rr scatt sm calcite vugs and patches, sli foss, ool in pt (from above?)

Ls cr-tan, fn xln, dns with Rr scatt sm calcite vugs and patches, patches & pcs chalky, sli foss, chert: gy-tan, fresh, opa, foss, still see mod am't of ool/oom pcs

Sh gy-black

Ls wh-cr-tan, fn xln, mostly dns, some chalky, foss in pt, chert: fresh, tan, subtransl, foss in pt

Ls wh-cr-tan, fn xln, mostly dns, some chalky, foss in pt (still a moderate am't of ool pcs in spls...from above?)

Sh gy-dk gy-black (sli carb in pt)

Ls wh-cr-tan, vfn-fn xln, dns in pt, chalky & soft in pt, foss

Ls cr-tan-gy, vfn-fn xln, dns, foss in pt, ool in pt

Sh gy-dk gy-black, carb in pt

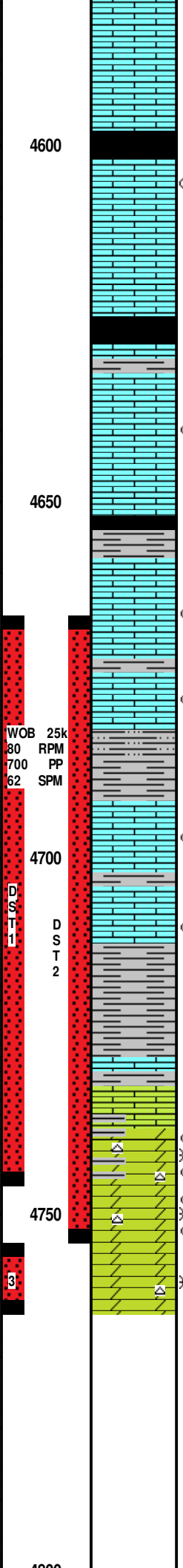
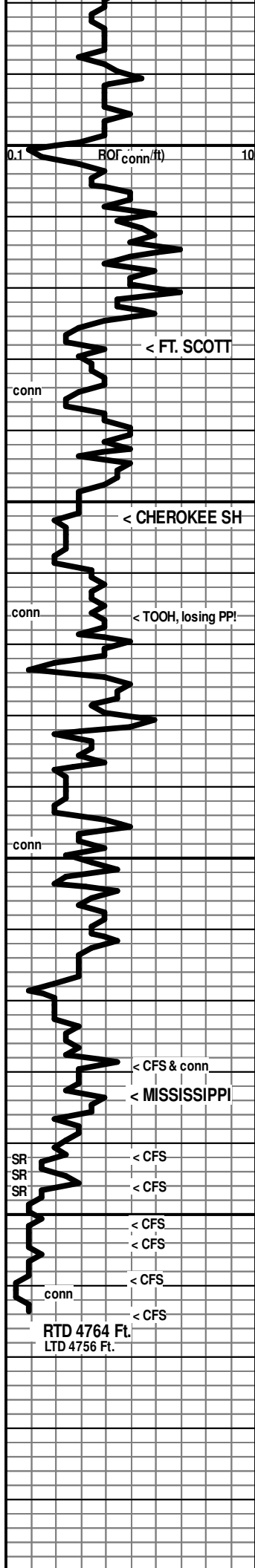
← 4568 (-2319)

Ls wh-cr-tan, vfn-fn xln, mostly dns & hard, some soft & chalky, scatt calcite patches, foss in pt

7:00 AM, November 16, 2017

Mud Check, Drlg @ 4460':

Vis	Wt	WL	LCM	PV	YP
77	8.6	6.8	.5	18	22
Chl	Hd	pH	Solids		
7600	120	10.5	4.5		



Ls wh-cr-tan, vfn-fn xln, mostly dns & hard, some soft & chalky, scatt calcite patches, foss in pt

4600  
Sh black, carb

Ls cr-tan, fn xln por xln por to dns, subchalky in pt, foss

[No Odor, Scatt mod fluor in spots and patches, No show of oil or gas]

Ls cr-tan, vfn-fn xln, dns, foss

Sh black, carb

← 4628 (-2379)

Sh gy

Ls wh-cr-tan-gy, vfn-fn xln, mostly dns, some pr xln por, some chalky, foss

[scatt fluor, see comment to right]

4650  
← 4652 (-2403)

Sh black, carb

Sh gy

Ls cr-tan, vfn-fn xln, dns, foss in pt (did not see bottoms up prior to TOOH)

[scatt fluor, see comment to right]

Sh dk gy-black

Ls wh-cr-tan, vfn-fn xln, dns, scatt chalky on edges, foss in pt

[scatt fluor, see comment to right]

Sh gy-brnsh gy-dk gy, silty in pt

Ls wh-cr-tan-gy, vfn-fn xln, dns, subchalky in pt, foss in pt

[scatt fluor, see above comment to right]

Ls wh-cr-tan-gy, vfn-fn xln, dns, subchalky in pt, foss in pt, scatt pyrite patches

[scatt fluor, see above comment to right]

Sh various colors: gy-dk gy-red-grn-yell, argill to subsilty to silty to earthy text, scatt pyritic, abund ls in spls

← 4733 (-2484)

4736-4742: Dol. & Limey Dol. cr-gy fnxln, silty-sucrosic text, pr vis xln por to dns, mostly pr crush, Rr pp pores

Show Descr. →

4743-4746: Dol. & Limey Dol. cr-gy-grnsh fnxln, silty-sucrosic text, Rr md xln subrhombic pcs, pr vis xln por to dns, pr-fr crush, Rr pp pores, Rr vugs, Chert: fresh, tan, subtransl

Show Descr. →

4747-4751: (spl 90% various colored shales with embedded & loose pyrite) 10% Dol. cr-tan, fnxln, suc text, pr-fr xln por, scatt gm glauc spots, pr-gd crush

Show Descr. →

4752-4754: (spl 85% various colored shales with embedded & loose pyrite) 15% Dol. cr-tan, fnxln, suc text, pr-fr xln por, Rr rhombic patches, scatt vugs & ppores, scatt gm glauc spots, pr-gd crush, some fresh chert

Show Descr. →

4755-4759: (Spl 90% shales of various colors red-yell-grn-gy with pyrite) 10% Dol cr-tn, fn xln, pr-fr xln por, suc, scatt pp pores, pr-gd crush, scatt gm glauc specks, chert: fresh, gy-tan-grn

Show Descr. →

4760-4764: (spl 80% Shales as above) 20% Dol cr-tan, fn xln, suc text, pr-fr xln por, scatt pp pores & vugs, pr-fr-gd crush, some fresh chert, some ls in spls

\* [Low to Mod am't of pcs in trays from Ft. Scott down through Cherokee Ls with dull-mod spotty to patchy fluor, No Odors, no shows of oil or gas bubbles in white light]

\* Keep losing pump pressure. TOOH to inspect pipe @ 4666 ft! Found nothing wrong with drill string. With oil in mud, pump pressure variations may be due to air in mud with pockets of very aired up mud.

\* [Low to Mod am't of pcs in trays from Ft. Scott down through Cherokee Ls with dull-mod spotty to patchy fluor, No Odors, no shows of oil or gas bubbles in white light]

Mud Check, CFS @ 4742':

Vis	Wt	WL	LCM	PV	YP
56	8.8	9.2	1	23	20
Chl	Hd	pH	Solids		
7950	60	9.2	3.2		

\*Add premix!

7:00 AM, November 17, 2019

\* Pipe Strap @4746': 1.79 ft short!

[4736-4742: Mod + Odor, abund mod-brt Fluor, Sli Shows of colorless-lt brn FO to NVL oil, v. sli gassy in pt, Rr lt tan stn]

[4743-4746: Stg Odor, Abund patchy to even Fluor, Sli gassy in pt, mostly sli shows of lt brn FO with less Fr shows and Rr Gd shows of NVL oil & lt brn FO, spotty-patchy lt brn stn]

[4747-4751: Fnt Odor, Low % pcs with spotty-patchy fluor, trace to sli show lt brn FO, V Rr lt tan stn]

[4752-4754: Fnt Odor, Low % pcs with spotty-patchy fluor, trace to sli show lt brn FO, trace gas bubbles, Rr lt tan stn]

[4755-4759: Fnt Odor, patchy fluor in dol, trace show of lt brn FO on crush, sli show of gas bubbles, Rr trace of tan stn]

[4760-4764: Mod Odor, patchy-even mod fluor, mix of trace sli fr shows of gassy brn

