

KANSAS CORPORATION COMMISSION
OIL & GAS CONSERVATION DIVISION

TEMPORARY ABANDONMENT WELL APPLICATION

OPERATOR: License#
Name:
Address 1:
Address 2:
City: State: Zip:
Contact Person:
Phone:
Contact Person Email:
Field Contact Person:
Field Contact Person Phone:

API No. 15-
Spot Description:
Sec. Twp. S. R.
GPS Location: Lat: Long:
Datum: NAD27 NAD83 WGS84
County: Elevation:
Lease Name: Well #:
Well Type: Oil Gas OG WSW Other:
SWD Permit #: ENHR Permit #:
Gas Storage Permit #:
Spud Date: Date Shut-In:

Table with 7 columns: Conductor, Surface, Production, Intermediate, Liner, Tubing. Rows include Size, Setting Depth, Amount of Cement, Top of Cement, Bottom of Cement.

Casing Fluid Level from Surface: How Determined? Date:
Casing Squeeze(s): to w / sacks of cement, to w / sacks of cement. Date:
Do you have a valid Oil & Gas Lease? Yes No
Depth and Type: Junk in Hole at Tools in Hole at Casing Leaks: Yes No Depth of casing leak(s):
Type Completion: ALT. I ALT. II Depth of: DV Tool: w / sacks of cement Port Collar: w / sack of cement
Packer Type: Size: Inch Set at: Feet
Total Depth: Plug Back Depth: Plug Back Method:

Geological Data:

Table with 4 columns: Formation Name, Formation Top, Formation Base, Completion Information. Rows 1 and 2.

UNDER PENALTY OF PERJURY I HEREBY ATTEST THAT THE INFORMATION CONTAINED HEREIN IS TRUE AND CORRECT TO THE BEST OF MY KNOWLEDGE

Submitted Electronically

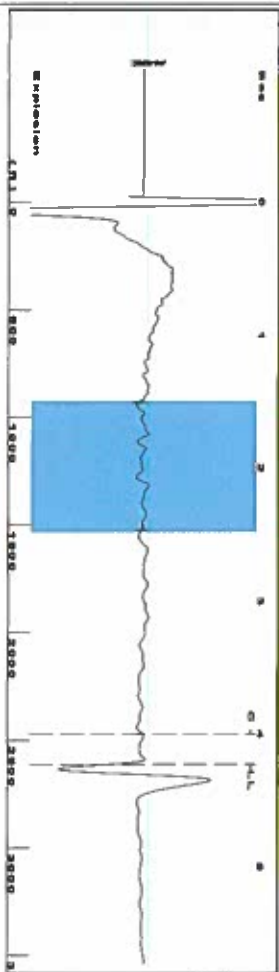
Do NOT Write in This Space - KCC USE ONLY
Date Tested: Results: Date Plugged: Date Repaired: Date Put Back in Service:
Review Completed by: Comments:
TA Approved: Yes Denied Date:

Mail to the Appropriate KCC Conservation Office:

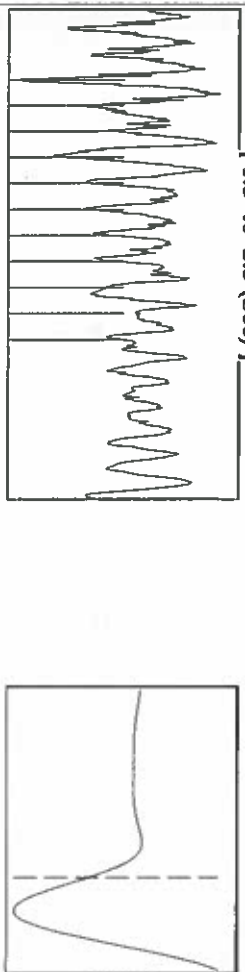
Table with 3 columns: District Office #, Address, Phone. Rows 1-4.

Shot @ 300 # 04

Group: LIBERAL T AND WELLS Well: BAUGHMAN E2 (acquired on: 01/22/18 13:42:39)



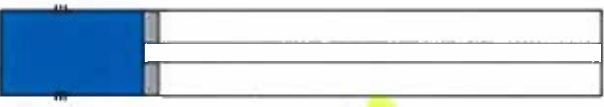
Filter Type High Pass Automatic Collar Count Yes Time 4.23 sec
 Manual Acoustic Velocity 1211.24 ft/s Manual JTS/sec 18.7266 Joints 80.7339 J/s
 Depth 2610.93 ft



Analysis Method: Automatic

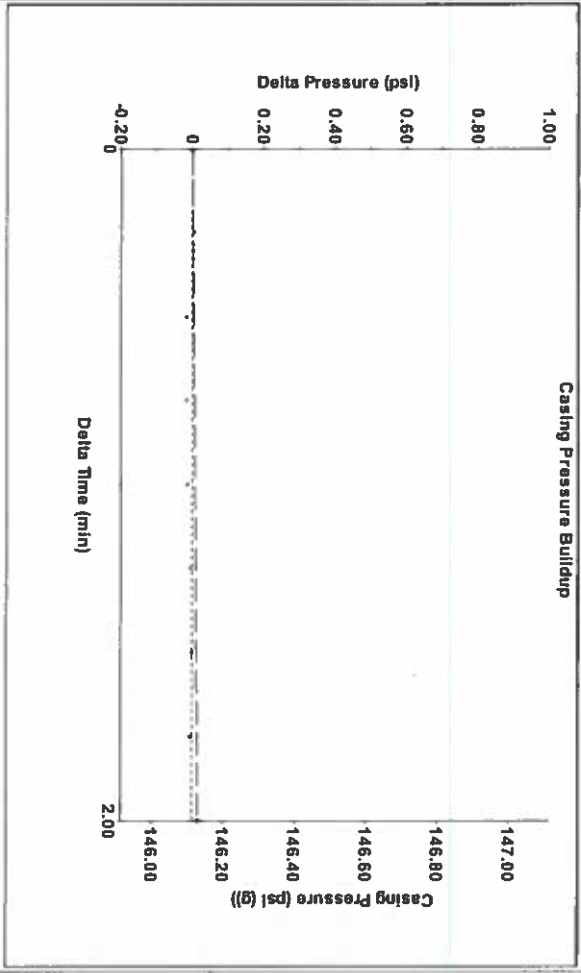
Group: LIBERAL T AND WELLS Well: BAUGHMAN E2 (acquired on: 01/22/18 13:42:39)

Production	Potential	Casing Pressure	Static
Oil - - *	BBL/D - - *	146.1 psi (g)	
Water - - *	BBL/D - - *	Casing Pressure Buildup	Oil Column Height
Gas - - *	Mscf/D - - *	0.017 psi	MD 0 ft
IPR Method	Vogel	2.00 min	
PBHP/SBHP		Gas/Liquid Interface Pressure	
Production Efficiency	0.0	157.3 psi (g)	
Oil 40 deg API	Liquid Level Depth		Water Column Height
Water 1.05 Sp.Gr.H2O	2610.93 ft		MD 669 ft
Gas 0.74 Sp.Gr.AIR	Pump Intake Depth		
Acoustic Velocity	2717.00 ft		
	Formation Depth		
	3280.00 ft		



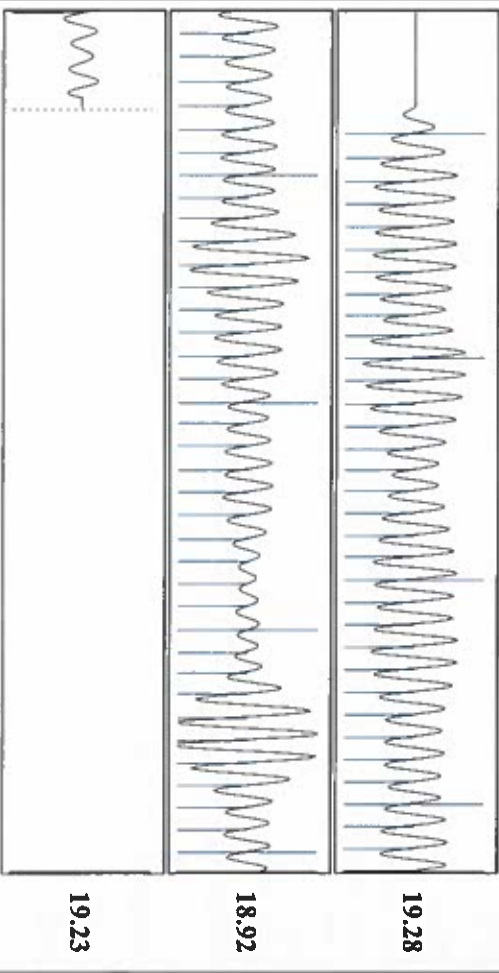
Static BHP 461.5 psi (g)

Group: LIBERAL T AND WELLS Well: BAUGHMAN E2 (acquired on: 01/22/18 13:42:39)



Change in Pressure 0.02 psi PT11249
 Change in Time 2.00 min Range 0 - 7 psi

Group: LIBERAL T AND WELLS Well: BAUGHMAN E2 (acquired on: 01/22/18 13:42:39)



Acoustic Velocity 1234.48 ft/s Joints counted 71
 Joints Per Second 19.086 jts/sec Joints to liquid level 80.7339
 Depth to liquid level 2610.93 ft Filler Width 16.7266
 Automatic Collar Count Yes Time to 1st Collar 0.284 4.004

February 06, 2018

Katherine McClurkan
Merit Energy Company, LLC
13727 Noel Road, Suite 1200
Dallas, TX 75240

Re: Temporary Abandonment
API 15-175-21025-00-01
Baughman E 2
NE/4 Sec.23-32S-34W
Seward County, Kansas

Dear Katherine McClurkan:

"Your temporary abandonment (TA) application for the well listed above has been approved. In accordance with K.A.R. 82-3-111 the TA status of this well will expire 02/06/2019.

- * If you return this well to service or plug it, please notify the District Office.
- * If you sell this well you are required to file a Transfer of Operator form, T-1.
- * If the well will remain temporarily abandoned, you must submit a new TA application, CP-111, before 02/06/2019.

You may contact me at the number above if you have questions.

Very truly yours,

Michael Maier"