

KANSAS CORPORATION COMMISSION
OIL & GAS CONSERVATION DIVISION

Form must be Typed
Form must be signed

TEMPORARY ABANDONMENT WELL APPLICATION

All blanks must be complete

OPERATOR: License#
Name:
Address 1:
Address 2:
City: State: Zip:
Contact Person:
Phone:
Contact Person Email:
Field Contact Person:
Field Contact Person Phone:

API No. 15-
Spot Description:
Sec. Twp. S. R.
feet from N / S Line of Section
feet from E / W Line of Section
GPS Location: Lat: , Long:
Datum: NAD27 NAD83 WGS84
County: Elevation: GL KB
Lease Name: Well #:
Well Type: (check one) Oil Gas OG WSW Other:
SWD Permit #: ENHR Permit #:
Gas Storage Permit #:
Spud Date: Date Shut-In:

Table with 7 columns: Conductor, Surface, Production, Intermediate, Liner, Tubing. Rows include Size, Setting Depth, Amount of Cement, Top of Cement, Bottom of Cement.

Casing Fluid Level from Surface: How Determined? Date:
Casing Squeeze(s): to w / sacks of cement, to w / sacks of cement. Date:
Do you have a valid Oil & Gas Lease? Yes No
Depth and Type: Junk in Hole at Tools in Hole at Casing Leaks: Yes No Depth of casing leak(s):
Type Completion: ALT. I ALT. II Depth of: DV Tool: w / sacks of cement Port Collar: w / sack of cement
Packer Type: Size: Inch Set at: Feet
Total Depth: Plug Back Depth: Plug Back Method:

Geological Date:

Table with 4 columns: Formation Name, Formation Top, Formation Base, Completion Information. Rows 1 and 2.

UNDER PENALTY OF PERJURY I HEREBY ATTEST THAT THE INFORMATION CONTAINED HEREIN IS TRUE AND CORRECT TO THE BEST OF MY KNOWLEDGE

Submitted Electronically

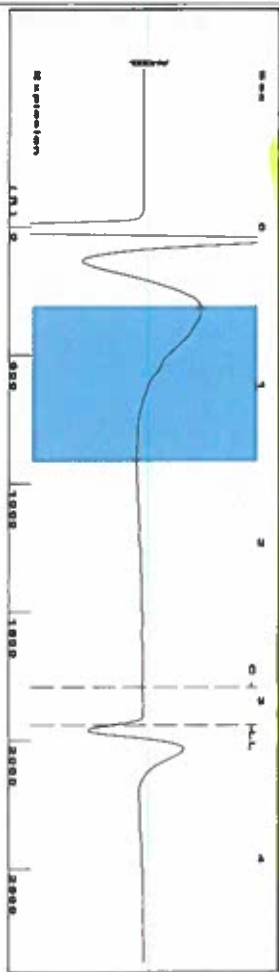
Do NOT Write in This Space - KCC USE ONLY
Date Tested: Results: Date Plugged: Date Repaired: Date Put Back in Service:
Review Completed by: Comments:
TA Approved: Yes Denied Date:

Mail to the Appropriate KCC Conservation Office:

Table with 3 columns: District Office #, Address, Phone. Rows 1-4.

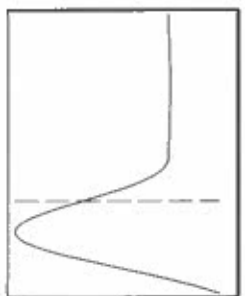
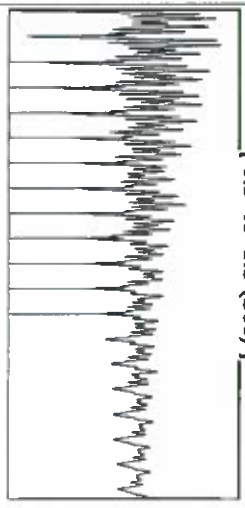
Shot @ 300 # 1st

Group: HITCH ROUTE Well: Santa Fe E4 (acquired on: 01/22/18 12:24:10)



Filter Type High Pass Automatic Collar Count Yes Time 3.153 sec  
 Manual Acoustic Velo: 1221.58 Manual JTS/sec 19.2678 Joints 61.1884 J/s  
 Depth 1939.67 ft

[ 0.5 to 1.5 (Sec) ]



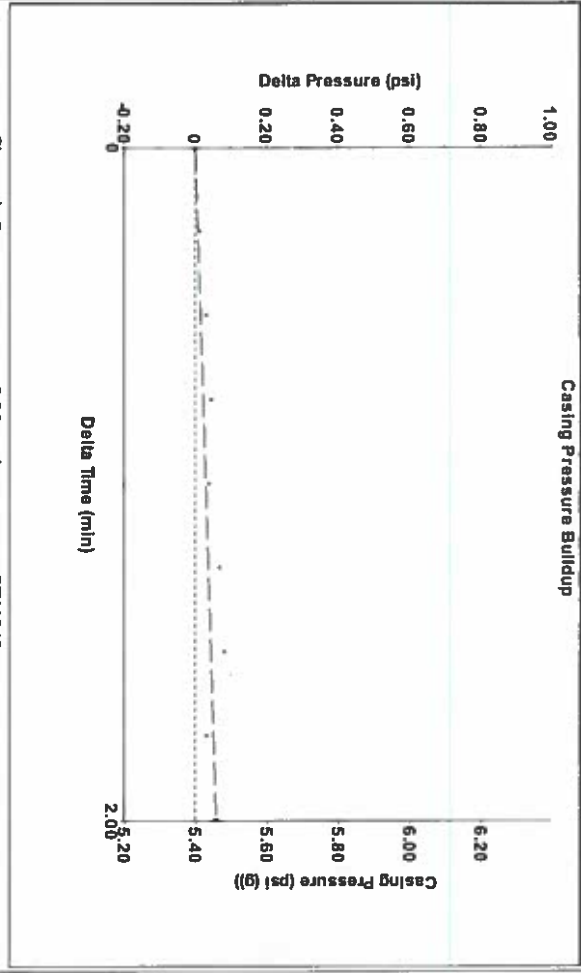
Analysis Method: Automatic

Group: HITCH ROUTE Well: Santa Fe E4 (acquired on: 01/22/18 12:24:10)

Production Current	Potential	Casing Pressure	Static
Oil -*- BBL/D	-*- BBL/D	5.4 psi (g)	Oil Column Height
Water -*- BBL/D	-*- BBL/D	0.059 psi	MD 0 ft
Gas -*- Mscf/D	-*- Mscf/D	2.00 min	Water Column Height
IPR Method	Vogel	Gas/Liquid Interface Pressure	MD 3708 ft
PBHP/SBHP	-*-	6.4 psi (g)	Static BHP
Production Efficiency	0.0	Liquid Level Depth	1692.4 psi (g)
Oil 40 deg API		1939.67 ft	
Water 1.05 Sp.Gr: H2O		Pump Intake Depth	
Gas 0.75 Sp.Gr: AIR		6107.00 ft	
Acoustic Velocity	1230.37 ft/s	Formation Depth	
		5659.00 ft	

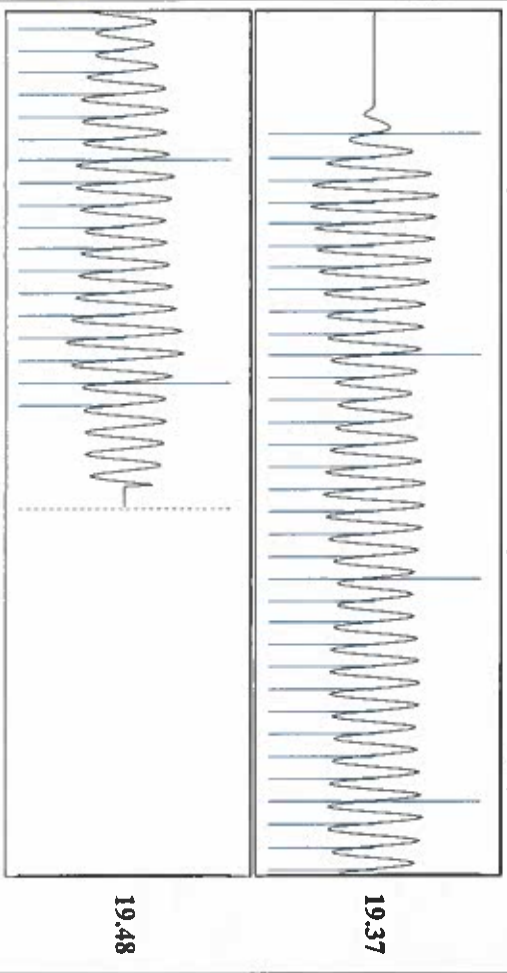


Group: HITCH ROUTE Well: Santa Fe E4 (acquired on: 01/22/18 12:24:10)



Change in Pressure 0.06 psi PTT1249  
 Change in Time 2.00 min Range 0 - 7 psi

Group: HITCH ROUTE Well: Santa Fe E4 (acquired on: 01/22/18 12:24:10)



Acoustic Velocity 1230.37 ft/s Joints counted 51  
 Joints Per Second 19.4064 J/s Joints to liquid level 61.1884  
 Depth to liquid level 1939.67 ft Filter Width 17.2678  
 Automatic Collar Count Yes Time to 1st Collar 0.284

February 06, 2018

Katherine McClurkan  
Merit Energy Company, LLC  
13727 Noel Road, Suite1200  
Dallas, TX 75240

Re: Temporary Abandonment  
API 15-175-21441-00-00  
Santa Fe E 2  
NW/4 Sec.06-32S-33W  
Seward County, Kansas

Dear Katherine McClurkan:

"Your temporary abandonment (TA) application for the well listed above has been approved. In accordance with K.A.R. 82-3-111 the TA status of this well will expire 02/06/2019.

- \* If you return this well to service or plug it, please notify the District Office.
- \* If you sell this well you are required to file a Transfer of Operator form, T-1.
- \* If the well will remain temporarily abandoned, you must submit a new TA application, CP-111, before 02/06/2019.

You may contact me at the number above if you have questions.

Very truly yours,

Michael Maier"