

KANSAS CORPORATION COMMISSION
OIL & GAS CONSERVATION DIVISION

TEMPORARY ABANDONMENT WELL APPLICATION

OPERATOR: License#
Name:
Address 1:
Address 2:
City: State: Zip:
Contact Person:
Phone:
Contact Person Email:
Field Contact Person:
Field Contact Person Phone:

API No. 15-
Spot Description:
Sec. Twp. S. R.
GPS Location: Lat, Long
Datum: NAD27, NAD83, WGS84
County: Elevation:
Lease Name: Well #:
Well Type: Oil, Gas, OG, WSW, Other
SWD Permit #: ENHR Permit #:
Gas Storage Permit #:
Spud Date: Date Shut-In:

Table with 7 columns: Conductor, Surface, Production, Intermediate, Liner, Tubing. Rows include Size, Setting Depth, Amount of Cement, Top of Cement, Bottom of Cement.

Casing Fluid Level from Surface: How Determined? Date:
Casing Squeeze(s): to w / sacks of cement, to w / sacks of cement. Date:
Do you have a valid Oil & Gas Lease? Yes No
Depth and Type: Junk in Hole at Tools in Hole at Casing Leaks: Yes No Depth of casing leak(s):
Type Completion: ALT. I ALT. II Depth of: DV Tool: w / sacks of cement Port Collar: w / sack of cement
Packer Type: Size: Inch Set at: Feet
Total Depth: Plug Back Depth: Plug Back Method:

Geological Data:

Table with 4 columns: Formation Name, Formation Top, Formation Base, Completion Information. Rows 1 and 2.

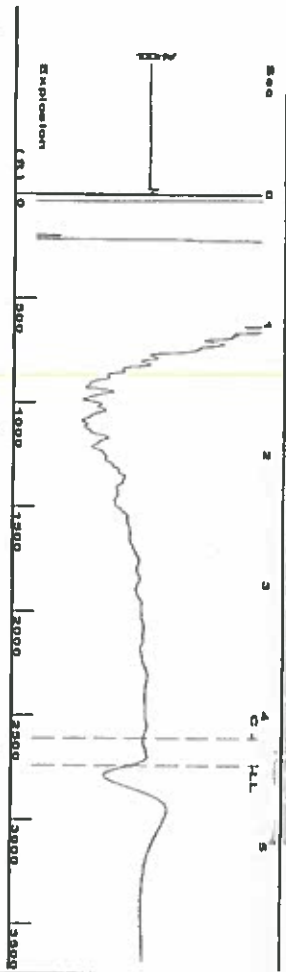
UNDER PENALTY OF PERJURY I HEREBY ATTEST THAT THE INFORMATION CONTAINED HEREIN IS TRUE AND CORRECT TO THE BEST OF MY KNOWLEDGE

Submitted Electronically

Do NOT Write in This Space - KCC USE ONLY
Date Tested: Results: Date Plugged: Date Repaired: Date Put Back in Service:
Review Completed by: Comments:
TA Approved: Yes Denied Date:

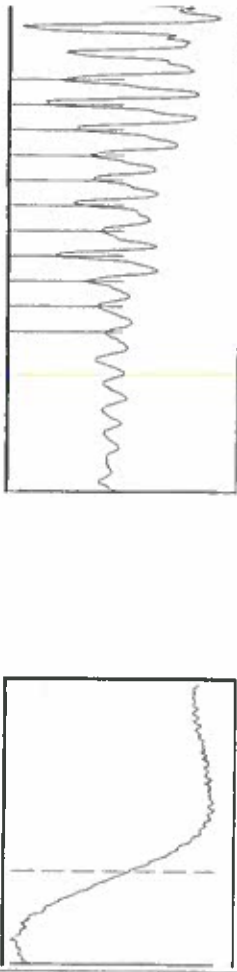
Mail to the Appropriate KCC Conservation Office:

Table with 3 columns: District Office #, Address, Phone. Rows 1-4.



Filter Type High Pass Automatic Collar Count Yes  
 Manual Acoustic Vel 226.31 ft/s Manual JTS/sec 19.3424  
 Time 4.384 sec  
 Joints 86.3787 Jts  
 Depth 2738.21 ft

[ 0.5 to 1.5 (Sec) ]



Analysis Method: Automatic

Group: Oxy USA Ulysses Well: Beck C-2 (acquired on: 02/16/18 09:57:10)

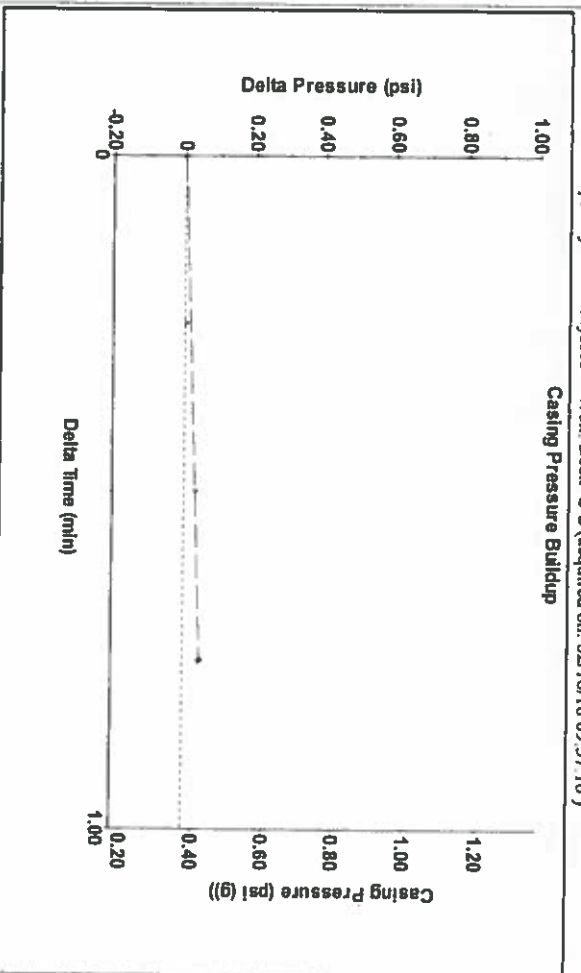
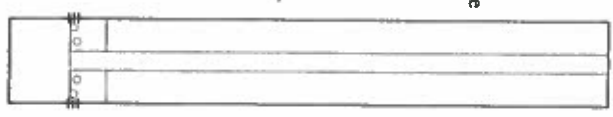
Production Current	Potential	Casing Pressure	Producing
Oil -	BBL/D	0.4 psi (g)	Annular Gas Flow
Water -	BBL/D	0.047 psi	% Liquid
Gas -	Mscf/D	0.75 min	93 %
IPR Method	Vogel	Gas/Liquid Interface Pressure	
PBHP/SBHP	-	1.4 psi (g)	
Production Efficiency	0.0		
Oil 40 deg API		Liquid Level Depth	
Water 1.05 Sp.Gr.H2O		2238.21 ft	
Gas 0.76 Sp.Gr.AIR		Pump Intake Depth	
Acoustic Velocity		2962.00 ft	
		Formation Depth	
		2940.00 ft	

Formation Submergence  
 Total Gaseous Liquid Column HT (TVD) 224 ft  
 Equivalent Gas Free Liquid HT (TVD) 210 ft

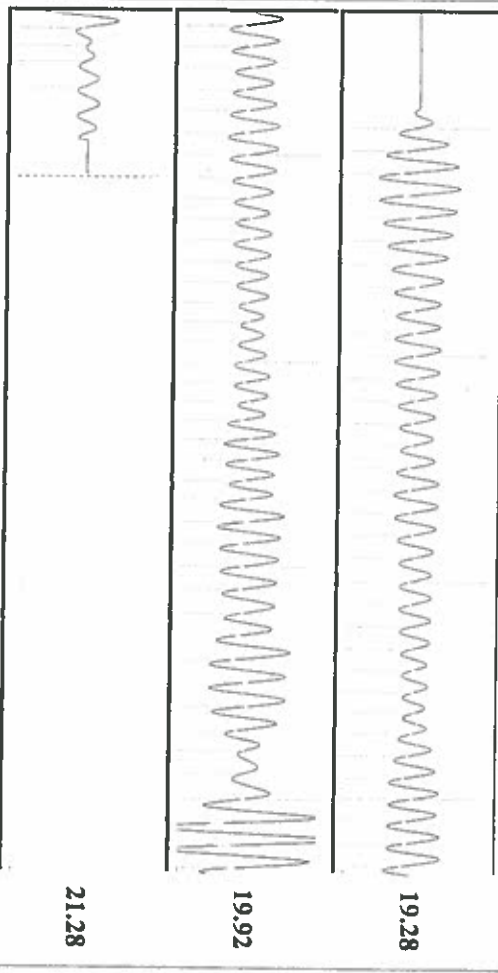
Acoustic Test

Time 4.384 sec  
 Joints 86.3787 Jts  
 Depth 2738.21 ft

Pump Intake 72.7 psi (g)  
 Producing BHP 65.3 psi (g)  
 Static BHP -



Change in Pressure 0.05 psi  
 Change in Time 0.75 min  
 PT9522 Range  
 0 - ? psi



Acoustic Velocity 1249.18 ft/s  
 Joints Per Second 19.7032 Jts/sec  
 Depth to liquid level 2738.21 ft  
 Automatic Collar Count Yes

Joints counted 77  
 Joints to liquid level 86.3787  
 Filter Width 17.3424  
 Time to 1st Collar 0.268

February 20, 2018

Katherine McClurkan  
Merit Energy Company, LLC  
13727 Noel Road, Suite 1200  
Dallas, TX 75240

Re: Temporary Abandonment  
API 15-067-20513-00-00  
Beck C 2  
NE/4 Sec.26-27S-35W  
Grant County, Kansas

Dear Katherine McClurkan:

"Your temporary abandonment (TA) application for the well listed above has been approved. In accordance with K.A.R. 82-3-111 the TA status of this well will expire 02/20/2019.

- \* If you return this well to service or plug it, please notify the District Office.
- \* If you sell this well you are required to file a Transfer of Operator form, T-1.
- \* If the well will remain temporarily abandoned, you must submit a new TA application, CP-111, before 02/20/2019.

You may contact me at the number above if you have questions.

Very truly yours,

Michael Maier"