

KANSAS CORPORATION COMMISSION
OIL & GAS CONSERVATION DIVISION

TEMPORARY ABANDONMENT WELL APPLICATION

OPERATOR: License#
Name:
Address 1:
Address 2:
City: State: Zip:
Contact Person:
Phone:
Contact Person Email:
Field Contact Person:
Field Contact Person Phone:

API No. 15-
Spot Description:
Sec. Twp. S. R.
GPS Location: Lat: Long:
Datum: NAD27 NAD83 WGS84
County: Elevation:
Lease Name: Well #:
Well Type: Oil Gas OG WSW Other:
SWD Permit #: ENHR Permit #:
Gas Storage Permit #:
Spud Date: Date Shut-In:

Table with 7 columns: Conductor, Surface, Production, Intermediate, Liner, Tubing. Rows include Size, Setting Depth, Amount of Cement, Top of Cement, Bottom of Cement.

Casing Fluid Level from Surface: How Determined? Date:
Casing Squeeze(s): to w / sacks of cement, to w / sacks of cement. Date:
Do you have a valid Oil & Gas Lease? Yes No
Depth and Type: Junk in Hole at Tools in Hole at Casing Leaks: Yes No Depth of casing leak(s):
Type Completion: ALT. I ALT. II Depth of: DV Tool: w / sacks of cement Port Collar: w / sack of cement
Packer Type: Size: Inch Set at: Feet
Total Depth: Plug Back Depth: Plug Back Method:

Geological Data:

Table with 4 columns: Formation Name, Formation Top, Formation Base, Completion Information. Rows 1 and 2.

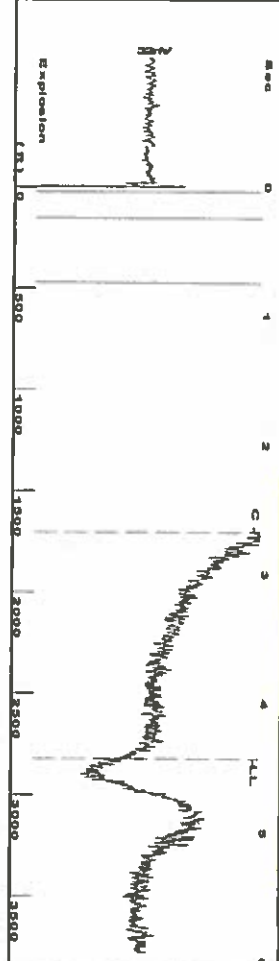
UNDER PENALTY OF PERJURY I HEREBY ATTEST THAT THE INFORMATION CONTAINED HEREIN IS TRUE AND CORRECT TO THE BEST OF MY KNOWLEDGE

Submitted Electronically

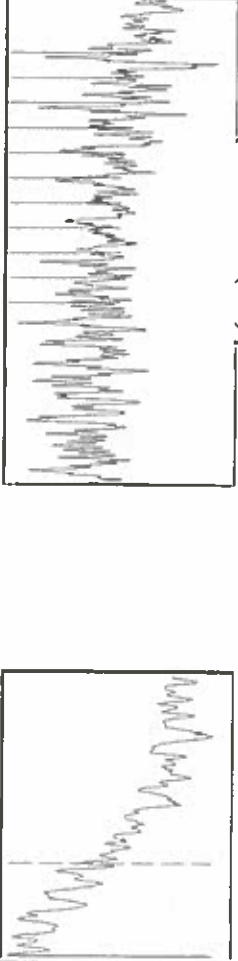
Do NOT Write in This Space - KCC USE ONLY
Date Tested: Results: Date Plugged: Date Repaired: Date Put Back in Service:
Review Completed by: Comments:
TA Approved: Yes Denied Date:

Mail to the Appropriate KCC Conservation Office:

Table with 2 columns: Office Address, Phone. Rows for District Office #1, #2, #3, #4.



Filter Type High Pass
 Manual Acoustic Velo 1233.46 ft/s
 Automatic Collar Count Yes
 Manual JTS/sec 19.4553
 Time 4.427 sec
 Joints 88.9964 Jts
 Depth 2821.19 ft



Analysis Method: Automatic

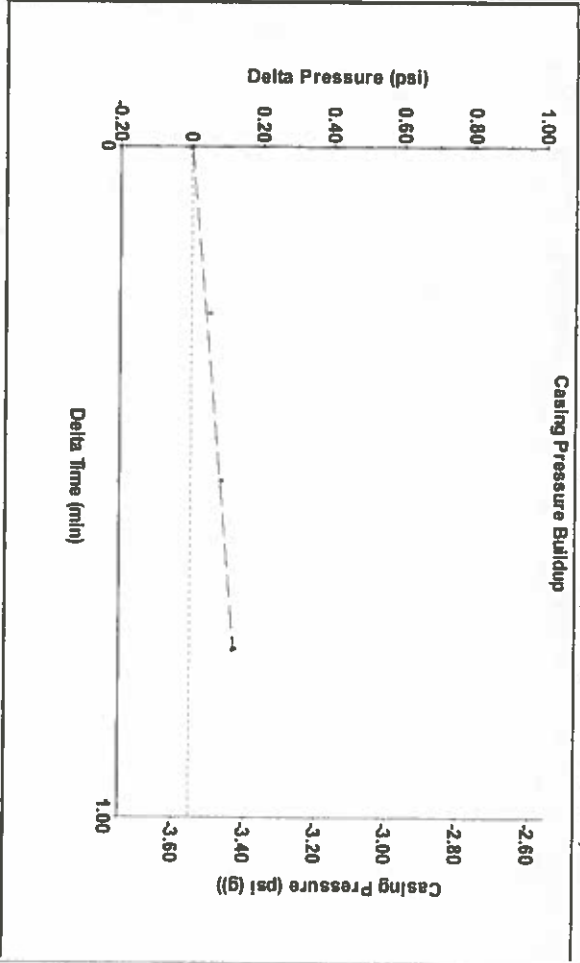
Group: Merit Energy Company-Ulysses Well: Ingles A-2 (acquired on: 02/14/18 14:53:39)

Production Current	Potential	Casing Pressure	Producing
Oil -*-	BBL/D	-3.6 psi (g)	
Water -*-	BBL/D	Casing Pressure Buildup	Annular Gas Flow
Gas -*-	Mscf/D	0.1 psi	3 Mscf/D
IPR Method	Vogel	Gas/Liquid Interface Pressure	% Liquid
PBHP/BHP	-*-	-2.8 psi (g)	83 %
Production Efficiency	0.0		
Oil 40 deg API		Liquid Level Depth	
Water 1.05 Sp.Gr H2O		2821.19 ft	
Gas 0.73 Sp.Gr AIR		Pump Intake Depth	
Acoustic Velocity	1274.54 ft/s	2915.00 ft	
		Formation Depth	
		2895.00 ft	



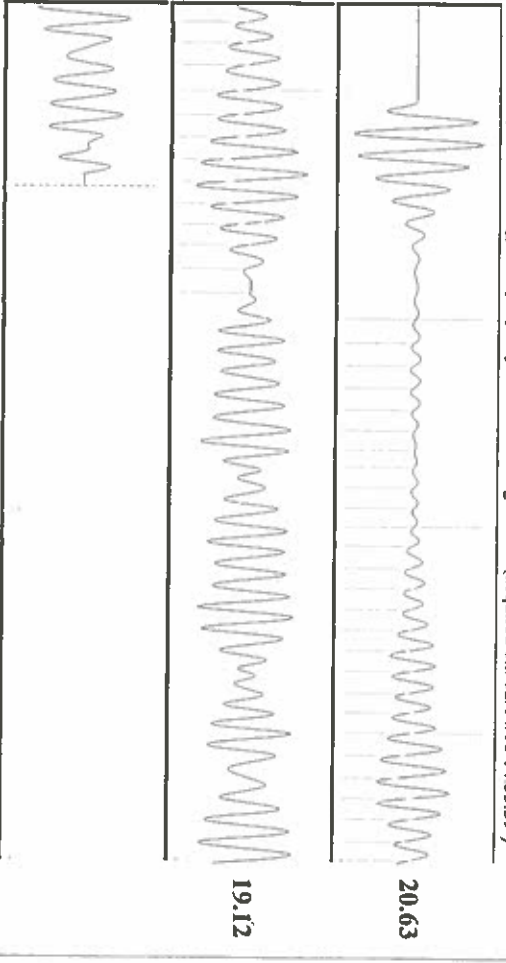
Formation Submergence
 Total Gaseous Liquid Column HT (TTVD) 94 ft
 Equivalent Gas Free Liquid HT (TVL) 81 ft
 Acoustic Test

Tim Frydendall-Fluid Level Technician



Change in Pressure 0.12 psi
 Change in Time 0.75 min
 PT19522 Range
 0-? psi

Group: Merit Energy Company-Ulysses Well: Ingles A-2 (acquired on: 02/14/18 14:53:39)



Acoustic Velocity 1274.54 ft/s
 Joints Per Second 20.1031 jts/sec
 Depth to liquid level 2821.19 ft
 Automatic Collar Count Yes

Joints counted 39
 Joints to liquid level 88.9964
 Filter Width 17.4553
 Time to 1st Collar 0.732

February 20, 2018

Katherine McClurkan
Merit Energy Company, LLC
13727 Noel Road, Suite 1200
DALLAS, TX 75240

Re: Temporary Abandonment
API 15-067-20526-00-00
Ingles A 2
SW/4 Sec.14-29S-36W
Grant County, Kansas

Dear Katherine McClurkan:

"Your temporary abandonment (TA) application for the well listed above has been approved. In accordance with K.A.R. 82-3-111 the TA status of this well will expire 02/20/2019.

- * If you return this well to service or plug it, please notify the District Office.
- * If you sell this well you are required to file a Transfer of Operator form, T-1.
- * If the well will remain temporarily abandoned, you must submit a new TA application, CP-111, before 02/20/2019.

You may contact me at the number above if you have questions.

Very truly yours,

Michael Maier"