

KANSAS CORPORATION COMMISSION
OIL & GAS CONSERVATION DIVISION

TEMPORARY ABANDONMENT WELL APPLICATION

OPERATOR: License#
Name:
Address 1:
Address 2:
City: State: Zip:
Contact Person:
Phone:
Contact Person Email:
Field Contact Person:
Field Contact Person Phone:

API No. 15-
Spot Description:
Sec. Twp. S. R.
GPS Location: Lat: Long:
Datum: NAD27 NAD83 WGS84
County: Elevation:
Lease Name: Well #:
Well Type: Oil Gas OG WSW Other:
SWD Permit #: ENHR Permit #:
Gas Storage Permit #:
Spud Date: Date Shut-In:

Table with 7 columns: Conductor, Surface, Production, Intermediate, Liner, Tubing. Rows include Size, Setting Depth, Amount of Cement, Top of Cement, Bottom of Cement.

Casing Fluid Level from Surface: How Determined? Date:
Casing Squeeze(s): to w / sacks of cement, to w / sacks of cement. Date:
Do you have a valid Oil & Gas Lease? Yes No
Depth and Type: Junk in Hole at Tools in Hole at Casing Leaks: Yes No Depth of casing leak(s):
Type Completion: ALT. I ALT. II Depth of: DV Tool: w / sacks of cement Port Collar: w / sack of cement
Packer Type: Size: Inch Set at: Feet
Total Depth: Plug Back Depth: Plug Back Method:

Geological Date:

Table with 4 columns: Formation Name, Formation Top, Formation Base, Completion Information. Rows 1 and 2.

UNDER PENALTY OF PERJURY I HEREBY ATTEST THAT THE INFORMATION CONTAINED HEREIN IS TRUE AND CORRECT TO THE BEST OF MY KNOWLEDGE

Submitted Electronically

Do NOT Write in This Space - KCC USE ONLY
Date Tested: Results: Date Plugged: Date Repaired: Date Put Back in Service:
Review Completed by: Comments:
TA Approved: Yes Denied Date:

Mail to the Appropriate KCC Conservation Office:

Table with 2 columns: Office Address, Phone. Rows for District Office #1, #2, #3, #4.

**General**

Well ID 125982  
 Well Brothers 3119 2-6H  
 Company Sandridge  
 Operator - \* -  
 Lease Name Broithers 3119 2-6H  
 Elevation 2148.00 ft  
 Production Method Other  
 Dataset Description

Comment

**Surface Unit**

Manufacturer - \* -  
 Unit Class Conventional  
 Unit API Number - \* -  
 Measured Stroke Length - \* - in  
 Rotation CW  
 Counter Balance Effect (Weights Level) - \* - Klb  
 Weight Of Counter Weights 2000 lb

**Prime Mover**

Motor Type Electric  
 Rated HP - \* - HP  
 Run Time 24 hr/day  
 MFG/Comment - \* -

**Electric Motor Parameters**

Rated Full Load AMPS - \* -  
 Rated Full Load RPM - \* -  
 Synchronous RPM 1200  
 Voltage - \* -  
 Hertz 60  
 Phase 3  
 Power Consumption 5  
 Power Demand 8 \$/KW

**Tubulars**

Tubing OD 2.875 in  
 Casing OD 7.000 in  
 Average Joint Length 31.700 ft  
 Anchor Depth - \* - ft  
 Kelly Bushing 19.00 ft

**Pump**

Plunger Diameter - \* - in  
 Pump Intake Depth 5710.00 ft  
 \*\*Total Rod Length < Pump Depth

**Polished Rod**

Polished Rod Diameter - \* - in

**Rod String**

	Top Taper	Taper 2	Taper 3	Taper 4	Taper 5	Taper 6
Rod Type	- * -	- * -	- * -	- * -	- * -	- * -
Rod Length	- * -	- * -	- * -	- * -	- * -	- * - ft
Rod Diameter	- * -	- * -	- * -	- * -	- * -	- * - in
Rod Weight	0.0	0.0	0.0	0.0	0.0	0.0 lb

Total Rod Length 0  
 Total Rod Weight 0.00

Damp Up 0.05  
 Damp Down 0.05

**Conditions**

**Pressure**

Static BHP 588.0 psi (g)  
 Static BHP Method Acoustic  
 Static BHP Date 02/01/2018  
 Producing BHP - \* - psi (g)  
 Producing BHP Method - \* -  
 Producing BHP Date - \* -  
 Formation Depth 5831.00 ft

**Production**

Oil Production 0 BBL/D  
 Water Production 1 BBL/D  
 Gas Production - \* - Mscf/D  
 Production Date 01/31/2018

**Temperatures**

Surface Temperature 70 deg F  
 Bottomhole Temperature 150 deg F

**Surface Producing Pressures**

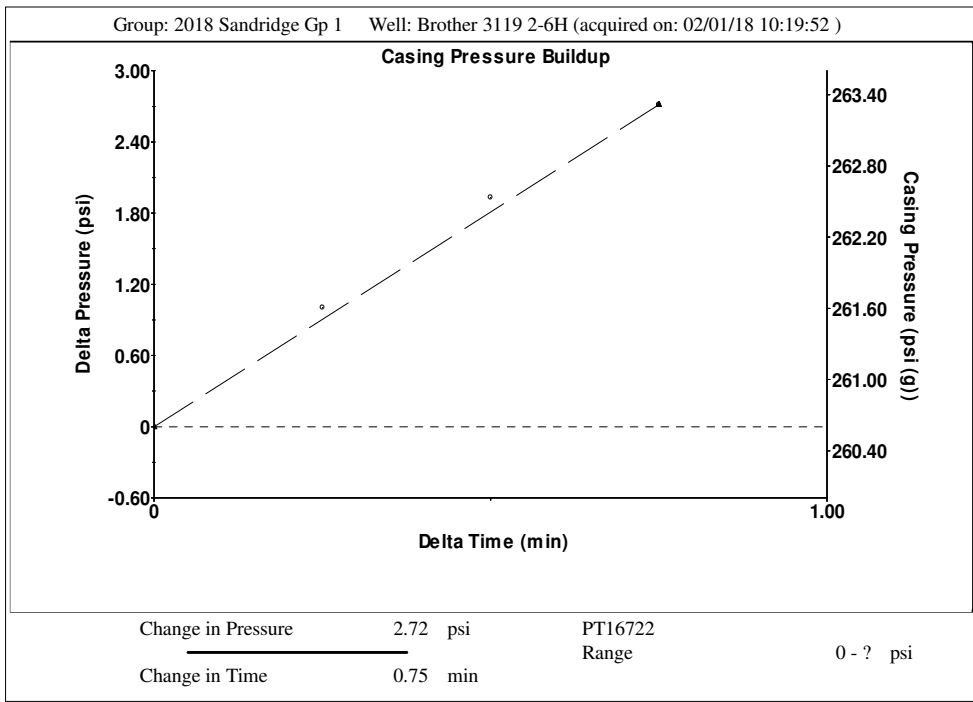
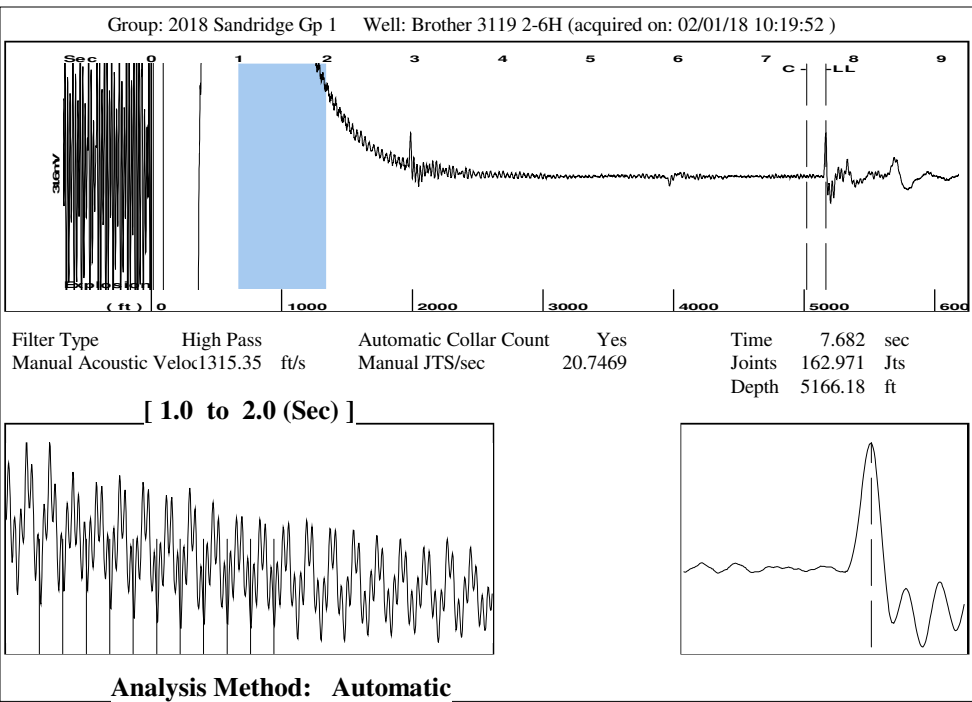
Tubing Pressure 272.0 psi (g)  
 Casing Pressure 260.6 psi (g)

**Fluid Properties**

Oil API 40 deg.API  
 Water Specific Gravity 1.05 Sp.Gr.H2O

**Casing Pressure Buildup**

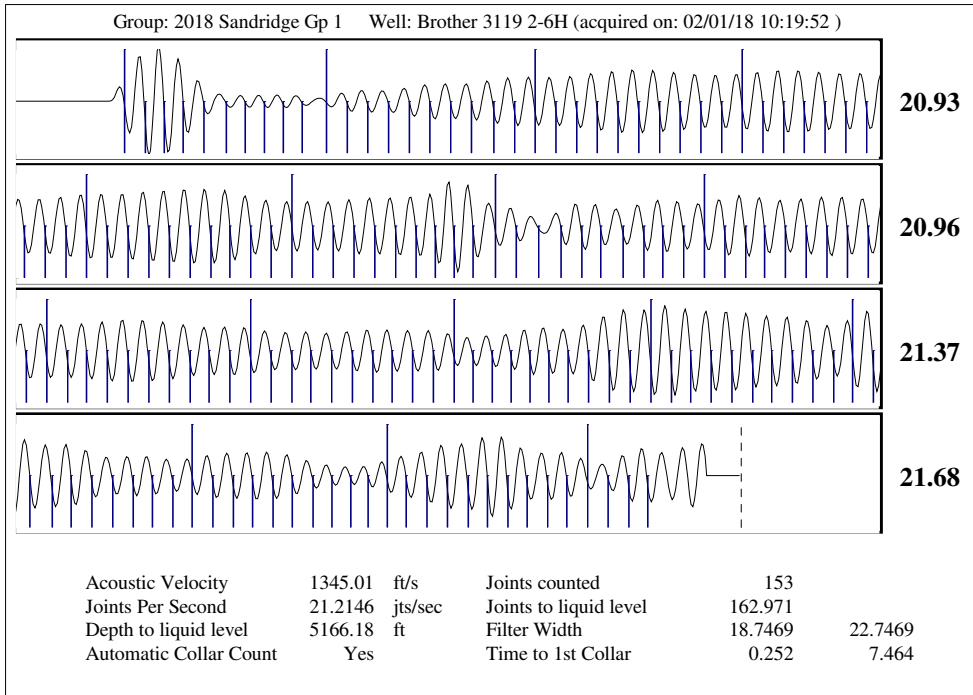
Change in Pressure 2.7 psi  
 Over Change in Time 0.75 min



Group: 2018 Sandridge Gp 1 Well: Brother 3119 2-6H (acquired on: 02/01/18 10:19:52)

Production		Potential		Casing Pressure			Static
Oil	0	- * -	BBL/D	Casing Pressure	260.6 psi (g)		
Water	1	- * -	BBL/D	Casing Pressure Buildup	2.7 psi		
Gas	- * -	- * -	Mscf/D	0.75 min			
IPR Method		Vogel		Gas/Liquid Interface Pressure		Oil Column Height	MD 0 ft
PBHP/SBHP		- * -		294.3 psi (g)		Water Column Height	
Production Efficiency		0.0		Liquid Level Depth		MD 646 ft	
Oil	40 deg.API			5166.18 ft		Tubing Intake Depth	5710.00 ft
Water	1.05 Sp.Gr.H2O			Formation Depth		5831.00 ft	
Gas	0.64 Sp.Gr.AIR					Static BHP	588.0 psi (g)
Acoustic Velocity		1345.01 ft/s					

Brothers 3119 2-6H



February 06, 2018

Laci Bevans  
SandRidge Exploration and Production LLC  
123 ROBERT S. KERR AVE  
OKLAHOMA CITY, OK 73102-6406

Re: Temporary Abandonment  
API 15-033-21700-01-00  
BROTHERS 3119 2-6H  
SW/4 Sec.06-31S-19W  
Comanche County, Kansas

Dear Laci Bevans:

"Your temporary abandonment (TA) application for the well listed above has been approved. In accordance with K.A.R. 82-3-111 the TA status of this well will expire 02/06/2019.

- \* If you return this well to service or plug it, please notify the District Office.
- \* If you sell this well you are required to file a Transfer of Operator form, T-1.
- \* If the well will remain temporarily abandoned, you must submit a new TA application, CP-111, before 02/06/2019.

You may contact me at the number above if you have questions.

Very truly yours,

Michael Maier"