

KANSAS CORPORATION COMMISSION
OIL & GAS CONSERVATION DIVISION

Form must be Typed

Form must be signed

All blanks must be complete

TEMPORARY ABANDONMENT WELL APPLICATION

OPERATOR: License# _____

Name: _____

Address 1: _____

Address 2: _____

City: _____ State: _____ Zip: _____ + _____

Contact Person: _____

Phone: (_____) _____

Contact Person Email: _____

Field Contact Person: _____

Field Contact Person Phone: (_____) _____

API No. 15- _____

Spot Description: _____

____ - ____ - ____ - ____ Sec. _____ Twp. _____ S. R. _____ ☐ E ☐ W_____ feet from ☐ N / ☐ S Line of Section_____ feet from ☐ E / ☐ W Line of Section

GPS Location: Lat: _____, Long: _____

(e.g. xx.xxxxx) (e.g. -xxx.xxxxx)

Datum: ☐ NAD27 ☐ NAD83 ☐ WGS84County: _____ Elevation: _____ ☐ GL ☐ KB

Lease Name: _____ Well #: _____

Well Type: (check one) ☐ Oil ☐ Gas ☐ OG ☐ WSW ☐ Other: _____☐ SWD Permit #: _____ ☐ ENHR Permit #: _____☐ Gas Storage Permit #: _____

Spud Date: _____ Date Shut-In: _____

	Conductor	Surface	Production	Intermediate	Liner	Tubing
Size						
Setting Depth						
Amount of Cement						
Top of Cement						
Bottom of Cement						

Casing Fluid Level from Surface: _____ How Determined? _____ Date: _____

Casing Squeeze(s): _____ to _____ w / _____ sacks of cement, _____ to _____ w / _____ sacks of cement. Date: _____
(top) (bottom) (top) (bottom)Do you have a valid Oil & Gas Lease? ☐ Yes ☐ NoDepth and Type: ☐ Junk in Hole at _____ ☐ Tools in Hole at _____ Casing Leaks: ☐ Yes ☐ No Depth of casing leak(s): _____
(depth) (depth)Type Completion: ☐ ALT. I ☐ ALT. II Depth of: ☐ DV Tool: _____ w / _____ sacks of cement ☐ Port Collar: _____ w / _____ sack of cement
(depth) (depth)

Packer Type: _____ Size: _____ Inch Set at: _____ Feet

Total Depth: _____ Plug Back Depth: _____ Plug Back Method: _____

Geological Data:**Formation Name**

Formation Top Formation Base

Completion Information

1. _____ At: _____ to _____ Feet Perforation Interval _____ to _____ Feet or Open Hole Interval _____ to _____ Feet

2. _____ At: _____ to _____ Feet Perforation Interval _____ to _____ Feet or Open Hole Interval _____ to _____ Feet

UNDER PENALTY OF PERJURY I HEREBY ATTEST THAT THE INFORMATION CONTAINED HEREIN IS TRUE AND CORRECT TO THE BEST OF MY KNOWLEDGE

Submitted Electronically

**Do NOT Write in This
Space - KCC USE ONLY**

Date Tested: _____ Results: _____ Date Plugged: _____ Date Repaired: _____ Date Put Back in Service: _____

Review Completed by: _____ Comments: _____

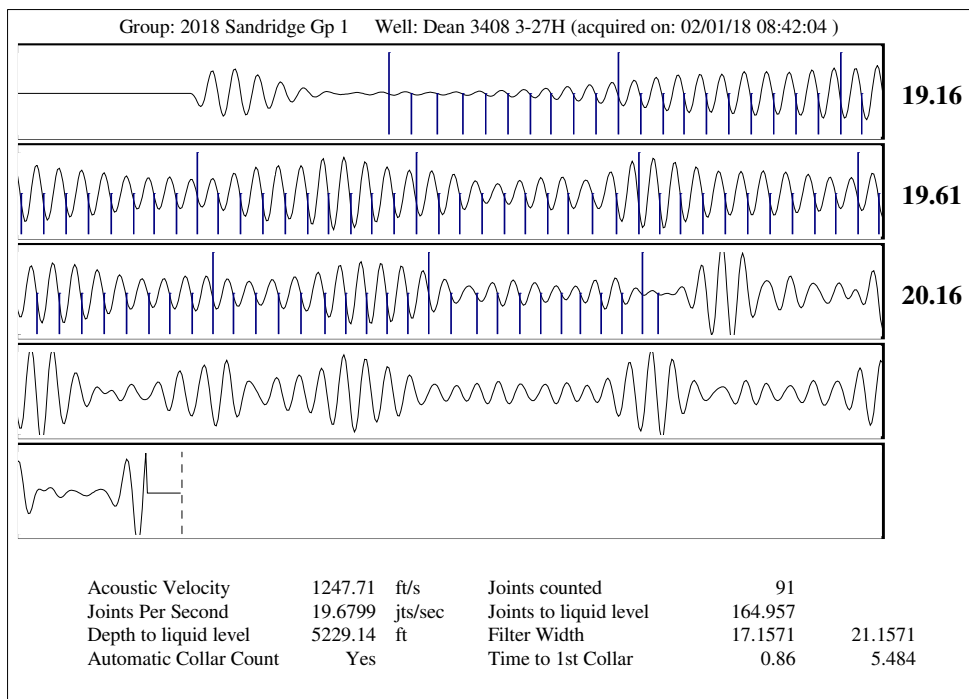
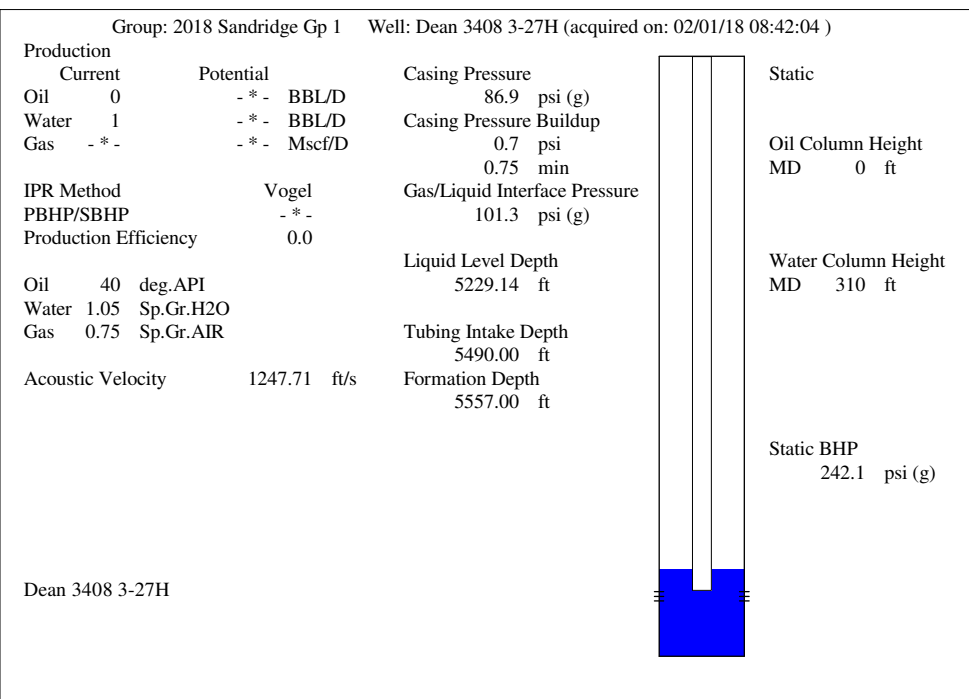
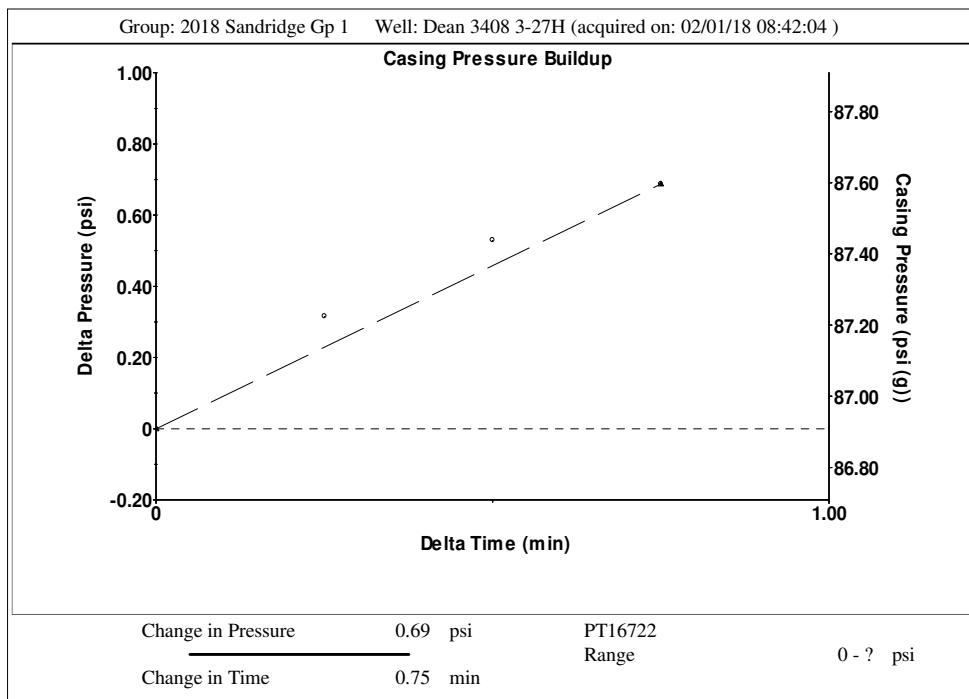
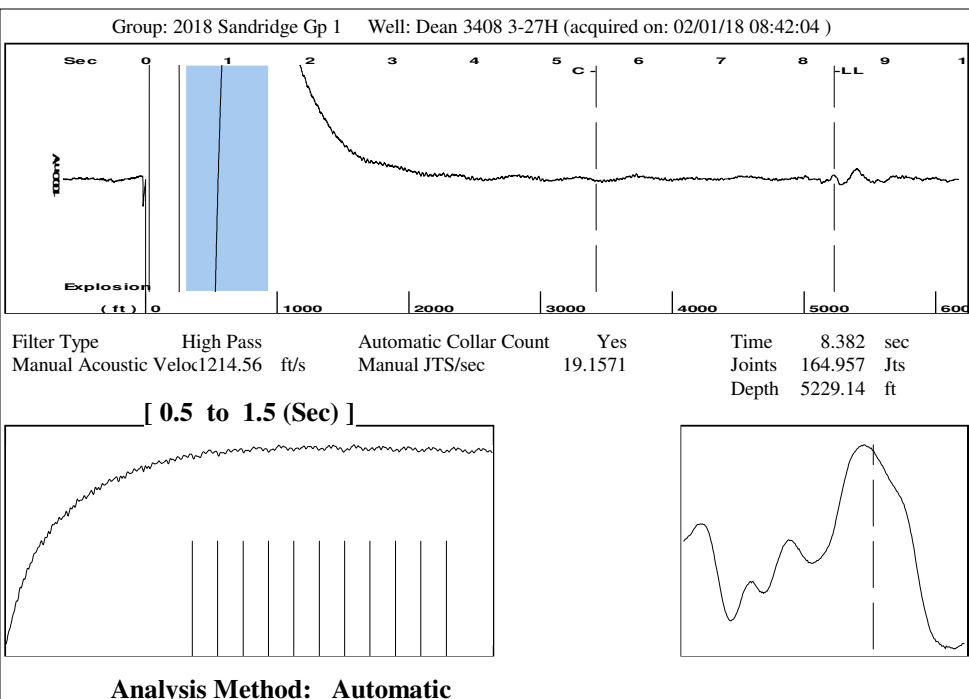
TA Approved: ☐ Yes ☐ Denied Date: _____**Mail to the Appropriate KCC Conservation Office:**

	KCC District Office #1 - 210 E. Frontview, Suite A, Dodge City, KS 67801	Phone 620.682.7933
	KCC District Office #2 - 3450 N. Rock Road, Building 600, Suite 601, Wichita, KS 67226	Phone 316.337.7400
	KCC District Office #3 - 137 E. 21st St., Chanute, KS 66720	Phone 620.902.6450
	KCC District Office #4 - 2301 E. 13th Street, Hays, KS 67601-2651	Phone 785.261.6250

General		Surface Unit	
Well ID	127455	Manufacturer	- * -
Well	Dean 3408 3-27H	Unit Class	Conventional
Company	Sandridge	Unit API Number	- * -
Operator	- * -	Measured Stroke Length	- * - in
Lease Name	Dean 3408 3-27H	Rotation	CW
Elevation	1316.00 ft	Counter Balance Effect (Weights Level)	- * - Klb
Production Method	Other	Weight Of Counter Weights	2000 lb
Dataset Description	Second Shot	Prime Mover	
Comment		Motor Type	Electric
		Rated HP	- * - HP
		Run Time	24 hr/day
		MFG/Comment	- * -
		Electric Motor Parameters	
		Rated Full Load AMPS	- * -
		Rated Full Load RPM	- * -
		Synchronous RPM	1200
		Voltage	- * -
		Hertz	60
		Phase	3
		Power Consumption	5
		Power Demand	8 \$/KW

Tubulars							Pump			Conditions				
Tubing OD	2.875	in	Plunger Diameter	- *	-	in	Pressure			Production				
Casing OD	7.000	in	Pump Intake Depth	5490.00	ft		Static BHP	242.1	psi (g)	Oil Production	0	BBL/D		
Average Joint Length	31.700	ft	**Total Rod Length < Pump Depth				Static BHP Method	Acoustic		Water Production	1	BBL/D		
Anchor Depth	- *	ft					Static BHP Date	02/01/2018		Gas Production	- *	Mscf/D		
Kelly Bushing	18.00	ft	Polished Rod							Production Date	01/31/2018			
							Polished Rod Diameter	- *	-	in				
Rod String														
	Top Taper	Taper 2	Taper 3	Taper 4	Taper 5	Taper 6								
Rod Type	- *	- *	- *	- *	- *	- *								
Rod Length	- *	- *	- *	- *	- *	- *	ft							
Rod Diameter	- *	- *	- *	- *	- *	- *	in							
Rod Weight	0.0	0.0	0.0	0.0	0.0	0.0	lb							
Total Rod Length	0													
Total Rod Weight	0.00													
Damp Up	0.05													
Damp Down	0.05													

Surface Producing Pressures			Temperatures		
Tubing Pressure	100.0	psi (g)	Surface Temperature	70	deg F
Casing Pressure	86.9	psi (g)	Bottomhole Temperature	150	deg F
Casing Pressure Buildup			Fluid Properties		
Change in Pressure	0.7	psi	Oil API	40	deg.API
Over Change in Time	0.75	min	Water Specific Gravity	1.05	Sp.Gr.H2O



STATE OF KANSAS

CORPORATION COMMISSION
CONSERVATION DIVISION
DISTRICT OFFICE No. 2
3450 N. ROCK ROAD
BUILDING 600, SUITE 601
WICHITA, KS 67226



PHONE: 316-337-7400
FAX: 316-630-4005
<http://kcc.ks.gov/>

GOVERNOR JEFF COLYER, M.D.

SHARI FEIST ALBRECHT, CHAIR | JAY SCOTT EMLER, COMMISSIONER | PAT APPLE, COMMISSIONER

March 14, 2018

Laci Bevans
SandRidge Exploration and Production LLC
123 ROBERT S. KERR AVE
OKLAHOMA CITY, OK 73102-6406

Re: Temporary Abandonment
API 15-077-22080-01-00
DEAN 3408 3-27H
NE/4 Sec.27-34S-08W
Harper County, Kansas

Dear Laci Bevans:

"Your temporary abandonment (TA) application for the well listed above has been approved. In accordance with K.A.R. 82-3-111 the TA status of this well will expire 03/14/2019.

- * If you return this well to service or plug it, please notify the District Office.
- * If you sell this well you are required to file a Transfer of Operator form, T-1.
- * If the well will remain temporarily abandoned, you must submit a new TA application, CP-111, before 03/14/2019.

You may contact me at the number above if you have questions.

Very truly yours,

STEVE VANGIESON"