

KANSAS CORPORATION COMMISSION
OIL & GAS CONSERVATION DIVISION

TEMPORARY ABANDONMENT WELL APPLICATION

OPERATOR: License#
Name:
Address 1:
Address 2:
City: State: Zip:
Contact Person:
Phone:
Contact Person Email:
Field Contact Person:
Field Contact Person Phone:

API No. 15-
Spot Description:
Sec. Twp. S. R.
GPS Location: Lat: Long:
Datum: NAD27 NAD83 WGS84
County: Elevation:
Lease Name: Well #:
Well Type: Oil Gas OG WSW Other:
SWD Permit #: ENHR Permit #:
Gas Storage Permit #:
Spud Date: Date Shut-In:

Table with 7 columns: Conductor, Surface, Production, Intermediate, Liner, Tubing. Rows include Size, Setting Depth, Amount of Cement, Top of Cement, Bottom of Cement.

Casing Fluid Level from Surface: How Determined? Date:
Casing Squeeze(s): to w / sacks of cement, to w / sacks of cement. Date:
Do you have a valid Oil & Gas Lease? Yes No
Depth and Type: Junk in Hole at Tools in Hole at Casing Leaks: Yes No Depth of casing leak(s):
Type Completion: ALT. I ALT. II Depth of: DV Tool: w / sacks of cement Port Collar: w / sack of cement
Packer Type: Size: Inch Set at: Feet
Total Depth: Plug Back Depth: Plug Back Method:

Geological Data:

Table with 4 columns: Formation Name, Formation Top, Formation Base, Completion Information. Rows 1 and 2.

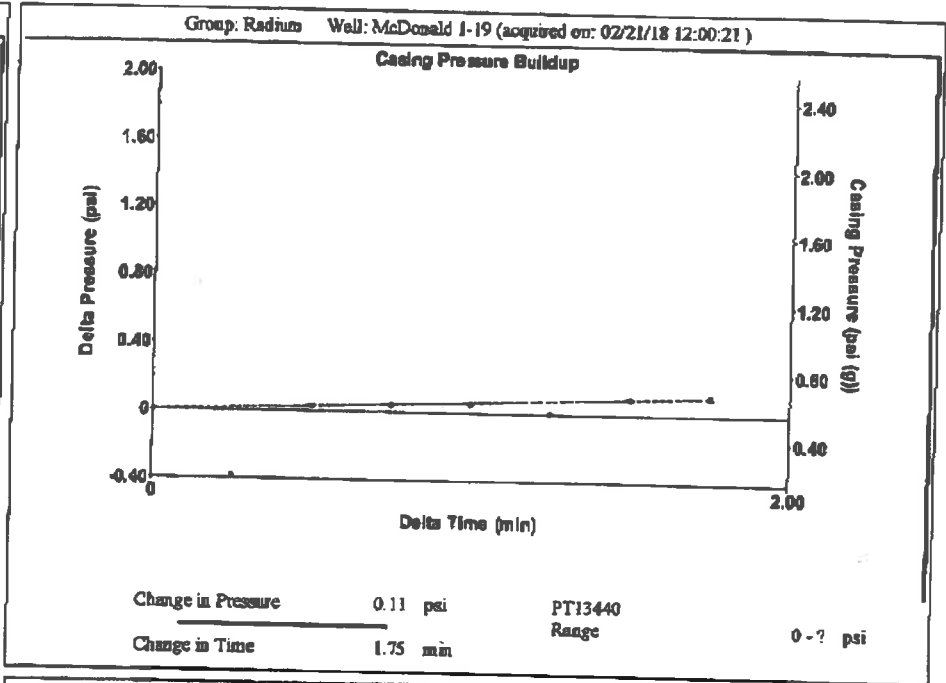
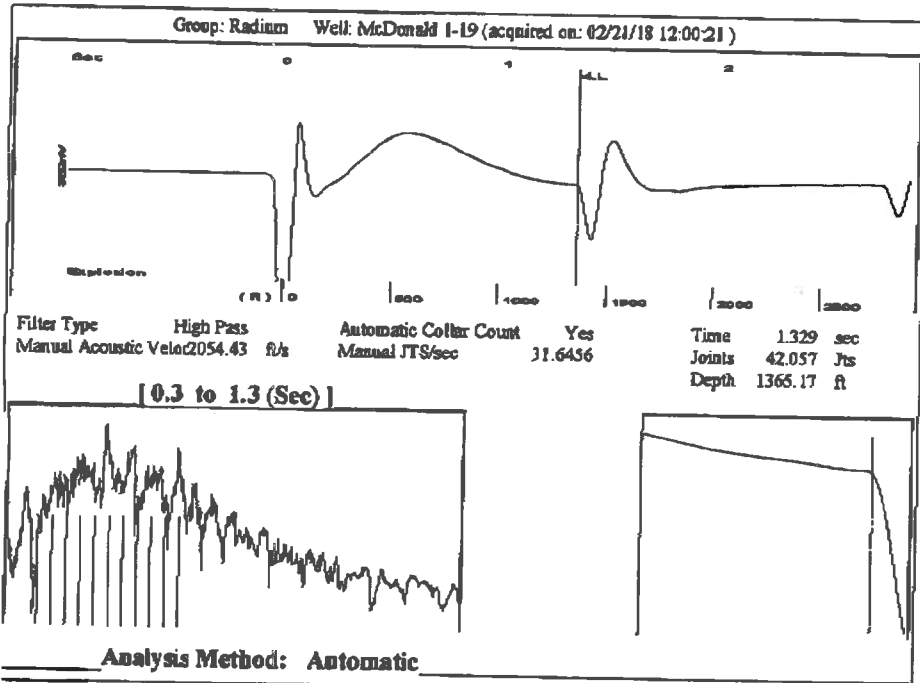
UNDER PENALTY OF PERJURY I HEREBY ATTEST THAT THE INFORMATION CONTAINED HEREIN IS TRUE AND CORRECT TO THE BEST OF MY KNOWLEDGE

Submitted Electronically

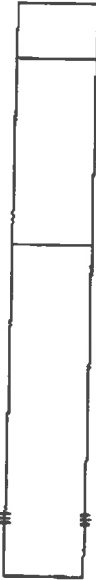
Do NOT Write in This Space - KCC USE ONLY
Date Tested: Results: Date Plugged: Date Repaired: Date Put Back in Service:
Review Completed by: Comments:
TA Approved: Yes Denied Date:

Mail to the Appropriate KCC Conservation Office:

Table with 2 columns: Office Address, Phone. Rows for District Office #1, #2, #3, #4.



Group: Radium Well: McDonald 1-19 (acquired on: 02/21/18 12:00:21)

Production	Potential	Casing Pressure		Producing
Current	Oil -.- BBL/D Water -.- BBL/D Gas -.- Mscf/D	0.6 psi (g) Casing Pressure Buildup 0.1 psi 1.75 min		Annular Gas Flow -.- Mscf/D % Liquid 98 %
IPR Method Vogel	Gas/Liquid Interface Pressure 1.0 psi (g)	Liquid Level Depth 1365.17 ft		Pump Intake Depth -.- ft
PBHP/SBHP -.- Production Efficiency 0.0	Formation Depth 3387.00 ft			
Oil 40 deg API Water 1.05 Sp.Gr.H2O Gas 0.55 Sp.Gr.AIR				
Acoustic Velocity 2054.43 ft/s				
Formation Submergence				Pump Intake -.- psi (g)
Total Gas/Liquid Column HT (TVD) 2022 ft				Producing BHP 901.6 psi (g)
Equivalent Gas Free Liquid HT (TVD) 1980 ft				Static BHP -.- psi (g)
Acoustic Test				

Group: Radium Well: McDonald 1-19 (acquired on: 02/21/18 12:00:21)

No Collar Count Data Available

Conservation Division
District Office No. 4
2301 E. 13th Street
Hays, KS 67601



Phone: 785-261-6250
Fax: 785-625-0564
<http://kcc.ks.gov>

Shari Feist Albrecht, Chair
Jay Scott Emler, Commissioner
Pat Apple, Commissioner

Governor Jeff Colyer, M.D.

February 22, 2018

Margery L. Nagel
F. G. Holl Company L.L.C.
9431 E CENTRAL STE 100
WICHITA, KS 67206-2563

Re: Temporary Abandonment
API 15-009-25856-00-00
MCDONALD 1-19
NE/4 Sec.19-20S-13W
Barton County, Kansas

Dear Margery L. Nagel:

"Your temporary abandonment (TA) application for the well listed above has been approved. In accordance with K.A.R. 82-3-111 the TA status of this well will expire 02/22/2019.

- * If you return this well to service or plug it, please notify the District Office.
- * If you sell this well you are required to file a Transfer of Operator form, T-1.
- * If the well will remain temporarily abandoned, you must submit a new TA application, CP-111, before 02/22/2019.

You may contact me at the number above if you have questions.

Very truly yours,

RICHARD WILLIAMS"