



Fall & Associates
 Stake and Elevation Service
 P.O. Box 222
 Pretty Prairie, KS. 67570
 785-243-7506

Date 1-29-18

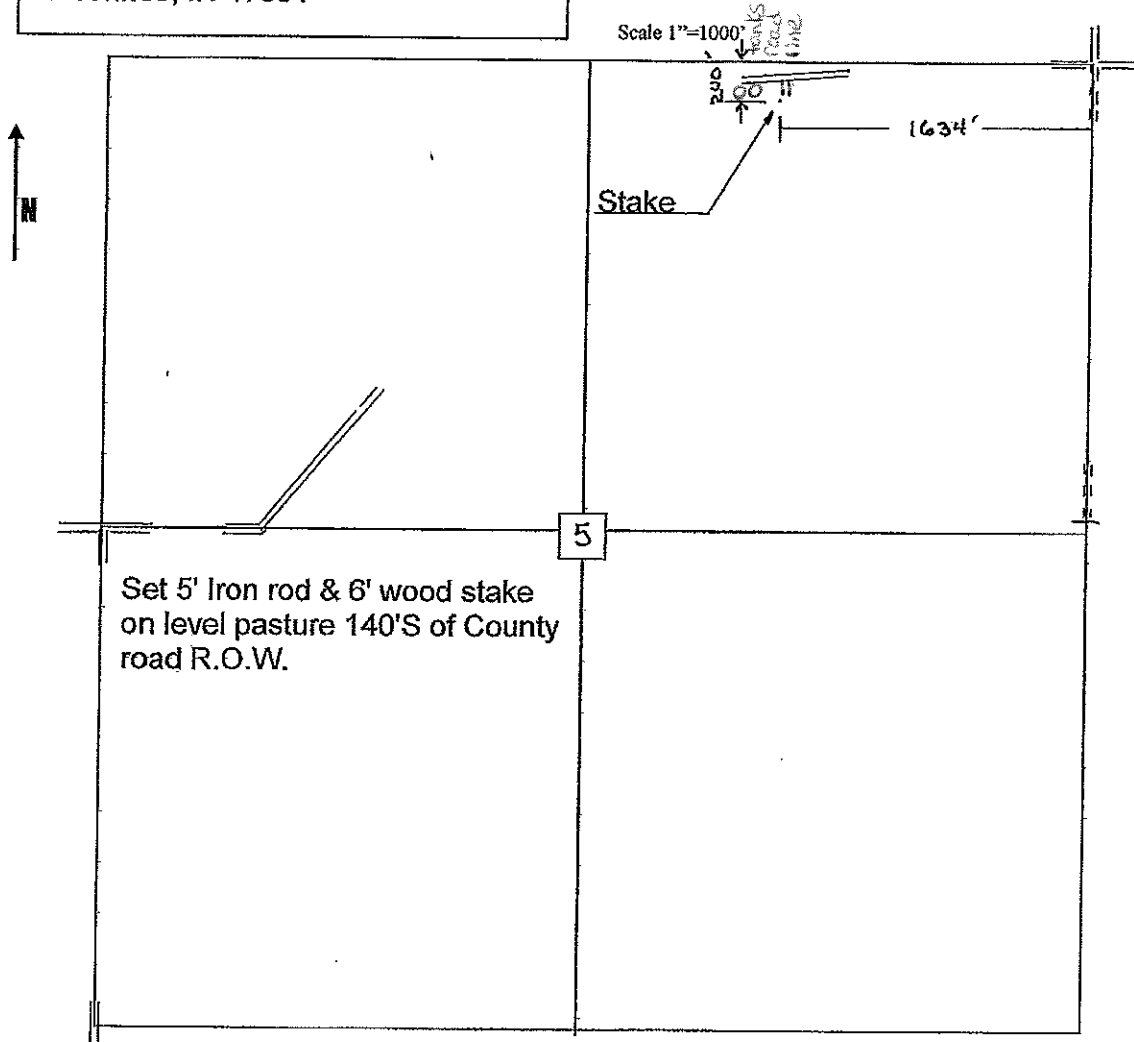
Invoice Number 0125181

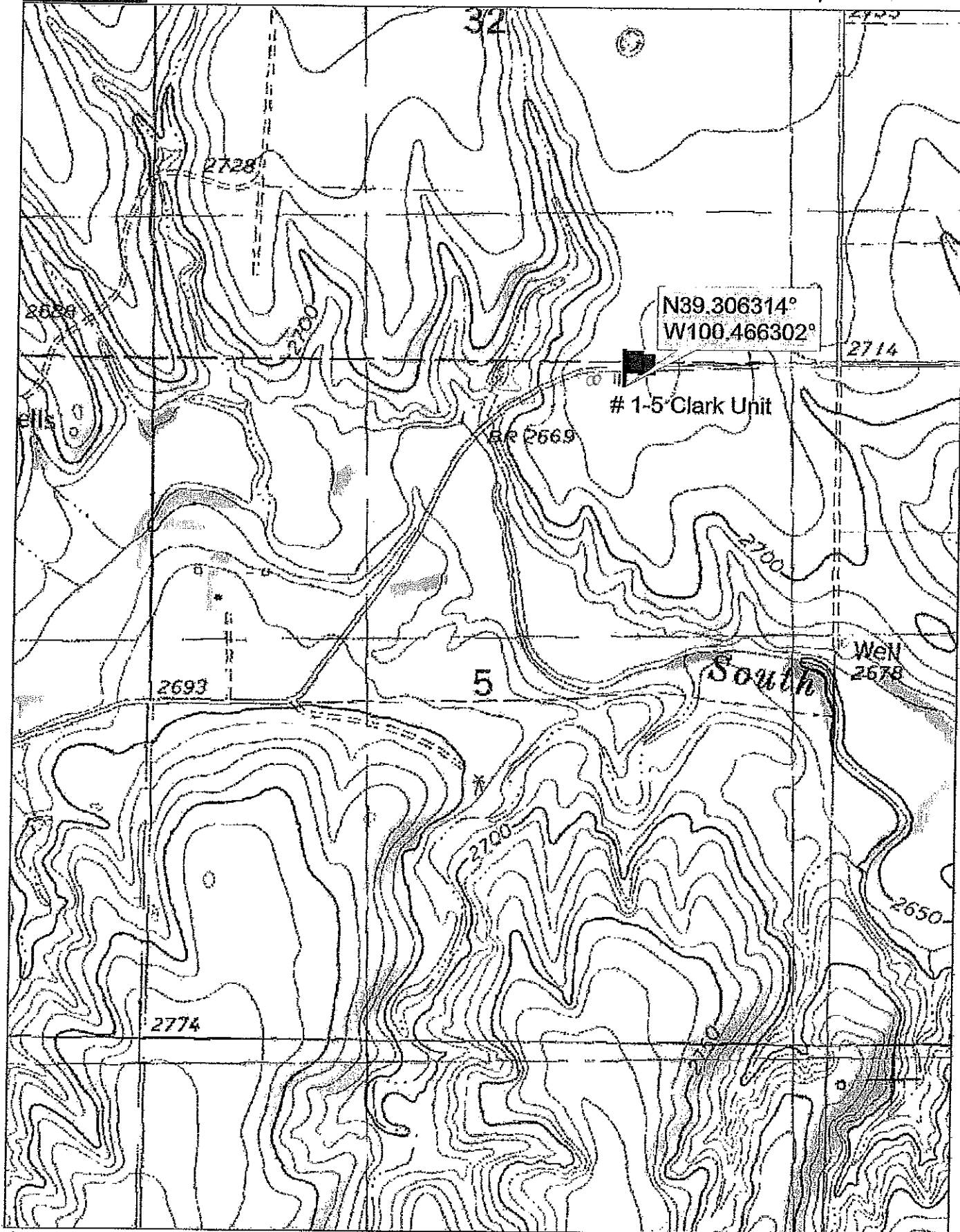
PIONEER OIL COMPANY	1-5			Clark Unit
Operator	Number			Farm Name
Sheridan-KS	5	9s	28w	200' FNL 1634' FEL
County-State	S	T	R	Location

Pioneer Oil Company
 400 Main
 P.O. Box 237
 Vincennes, IN 47591

Elevation 2725 Gr.

Ordered By: Brandi





Data use subject to license.

© DeLorme. Topo North America™ 9.

www.delorme.com

