

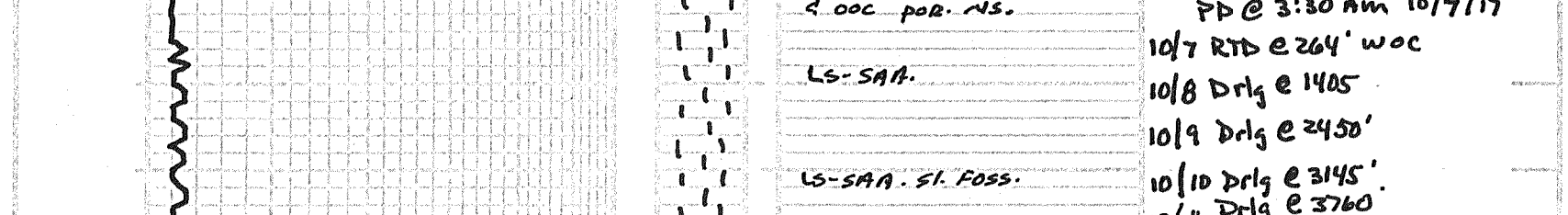
COMPANY: Lotus Operating Co. LLC
LEASE: #1 Row Piester
FIELD: 1165 FSL 1610 FWL
LOCATION: 14 TRIP 293 RING 16W
COUNTY: Kiowa STATE: KS
CONTRACT NO: Dole Dots Ring 2
SPUD: 10/16/2017
DATE: 10/16/2017

DEPTH: 3899
TIME: 14:00
MUDLOG: CEMENTAL
FORMATION: MISSOURI
FORMATION YOUNG & STRUCTURAL POSITION: Micro of Fe. Sulfide
MUDLOG: NID w/ Fe. Sulfide

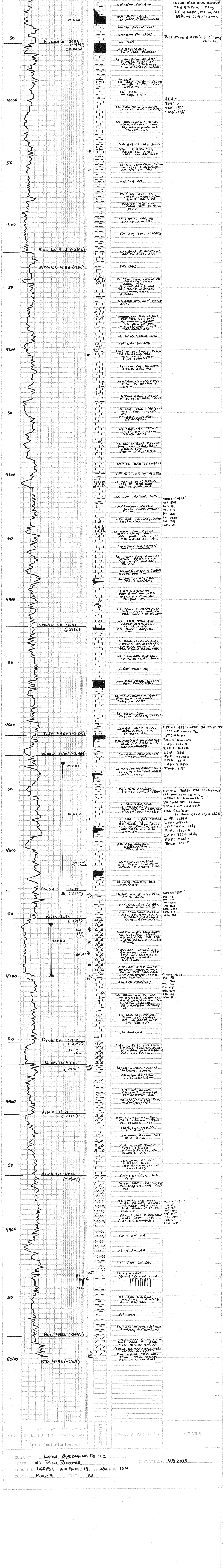
FORMATION	DEPTH	THICKNESS
HEBERER	3954	-1919
BEAL LN	4121	-2095
LANSIAJG	4135	-2085
MAHWA	4158	-2076
CH SHALE	4151	-2076
VIAS	4152	-2076
VIAS SH	4154	-2076
VIAS SH	4170	-2072
VIAS SH	4180	-2072
VIAS SH	4181	-2072
VIAS SH	4182	-2072
VIAS SH	4183	-2072
VIAS SH	4184	-2072
VIAS SH	4185	-2072
VIAS SH	4186	-2072
VIAS SH	4187	-2072
VIAS SH	4188	-2072
VIAS SH	4189	-2072
VIAS SH	4190	-2072
VIAS SH	4191	-2072
VIAS SH	4192	-2072
VIAS SH	4193	-2072
VIAS SH	4194	-2072
VIAS SH	4195	-2072
VIAS SH	4196	-2072
VIAS SH	4197	-2072
VIAS SH	4198	-2072
VIAS SH	4199	-2072
VIAS SH	4200	-2072

REMARKS: It is recommended to set pipe on the Miss chart due to the positive DST, sample shows and log calculations and further test the Miss through perforations and necessary acid and fracture treatments.

LEGEND



SCALE = 100'



COMPANY: Lotus Operating Co. LLC
LEASE: #1 Row Piester
LOCATION: 1165 FSL 1610 FWL 14 TRIP 293 RING 16W
COUNTY: Kiowa STATE: KS
ELEVATION: KB 2035