



Crafton Tull
SURVEYING

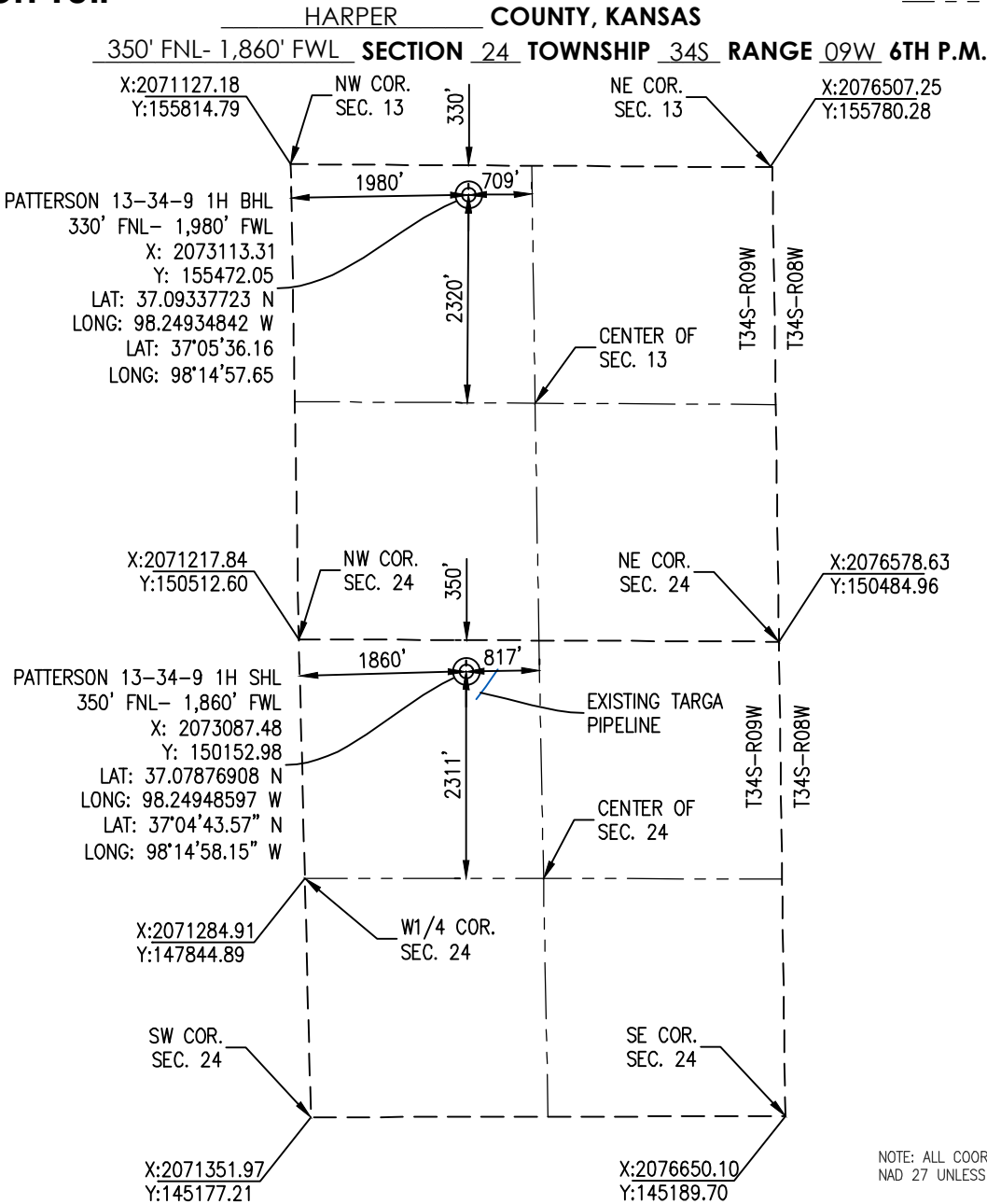
HARPER COUNTY, KANSAS

LEGEND

--- SECTION LINE
--- QUARTER LINE



BOTTOM HOLE INFORMATION PROVIDED
BY OPERATOR LISTED AND CORNER
COORDINATES ARE TAKEN FROM POINTS
SURVEYED IN THE FIELD.



OPERATOR: TAPSTONE ENERGY

WELL NO: 1H

ELEVATION:

1,284' GR. AT STAKE

LEASE NAME: PATTERSON 13-34-9

TOPOGRAPHIC & VEGETATION: LOCATION FELL IN A FIELD

GOOD DRILL SITE: YES

REFERENCE STAKES OR ALTERNATE LOCATION
STAKES SET: NONE

BEST ACCESSIBILITY TO LOCATION: NORTH OR WEST LINE

DISTANCE & DIRECTION
FROM HWY JCT OR TOWN: FROM THE JCT. OF STATE HWY. 2 & SW 120 AVE. (±5.4 MILES
NORTHEAST OF CORWIN, KS), TRAVEL ±5.0 MILES SOUTH ON SW 120 AVE. TO THE
NORTHWEST CORNER OF SECTION 24, T34S-R09W.

(THE FOLLOWING
INFORMATION WAS
GATHERED USING A GPS
RECEIVER ACCURACY ±2-3
METERS)

GPS
DATUM: NAD-27
LAT: 37.07876908 N
LONG: 98.24948597 W

STATE PLANE
COORDINATES:
ZONE: KS-SOUTH NAD-27
X: 2073087.48
Y: 150152.98

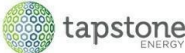

CERTIFICATION OF AUTHORIZATION:
CRAFTON TULL - NO. LS-253

GENERAL NOTES:

THE TIES AND FOOTAGES SHOWN ON THIS PLAT ARE FROM LINES OF OCCUPATION FROM A SURVEY MADE ON THE GROUND AND / OR BEARING AND DISTANCES FROM THE GENERAL LAND OFFICE PLAT OF THE AREA SHOWN AND MAY NOT BE THE ACTUAL PROPERTY CORNERS. THIS PLAT DOES NOT REPRESENT A TRUE BOUNDARY SURVEY. DRILL SITE CONDITION DETERMINATIONS WERE MADE BY TAPSTONE ENERGY REPRESENTATIVES.

GRAPHIC SCALE IN FEET



REVISION		 "PATTERSON 13-34-9 1H" PART OF THE NW1/4 OF SECTION 24, T-34-S, R-09-W PROPOSED DRILL SITE HARPER COUNTY, KANSAS		
	MOVED PAD 1-24-18			
		SCALE: 1" = 2000'	PLOT DATE: 01-25-2018	DRAWN BY: JWB
				SHEET NO.: 1 OF 5

UNIT DESCRIPTION FOR PATTERSON 13-34-9 1H

SHL UNIT ACRES : 720

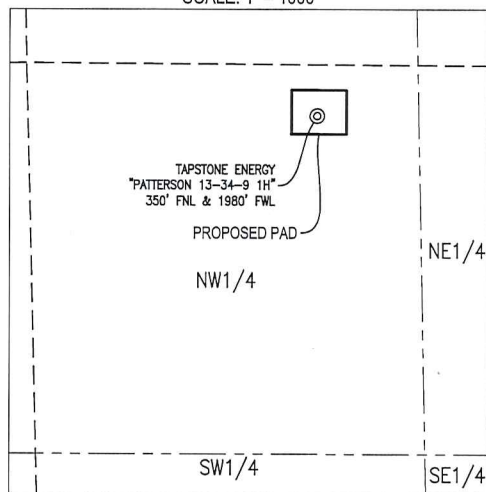
SHL UNIT DESCRIPTION: Located within the Sylvia Unit. This is a 720 acre unit comprised of all of section 24-34S-9W and the E/2 E/2 E/2 of section 23-34S-9W.

BHL UNIT ACRES: 600

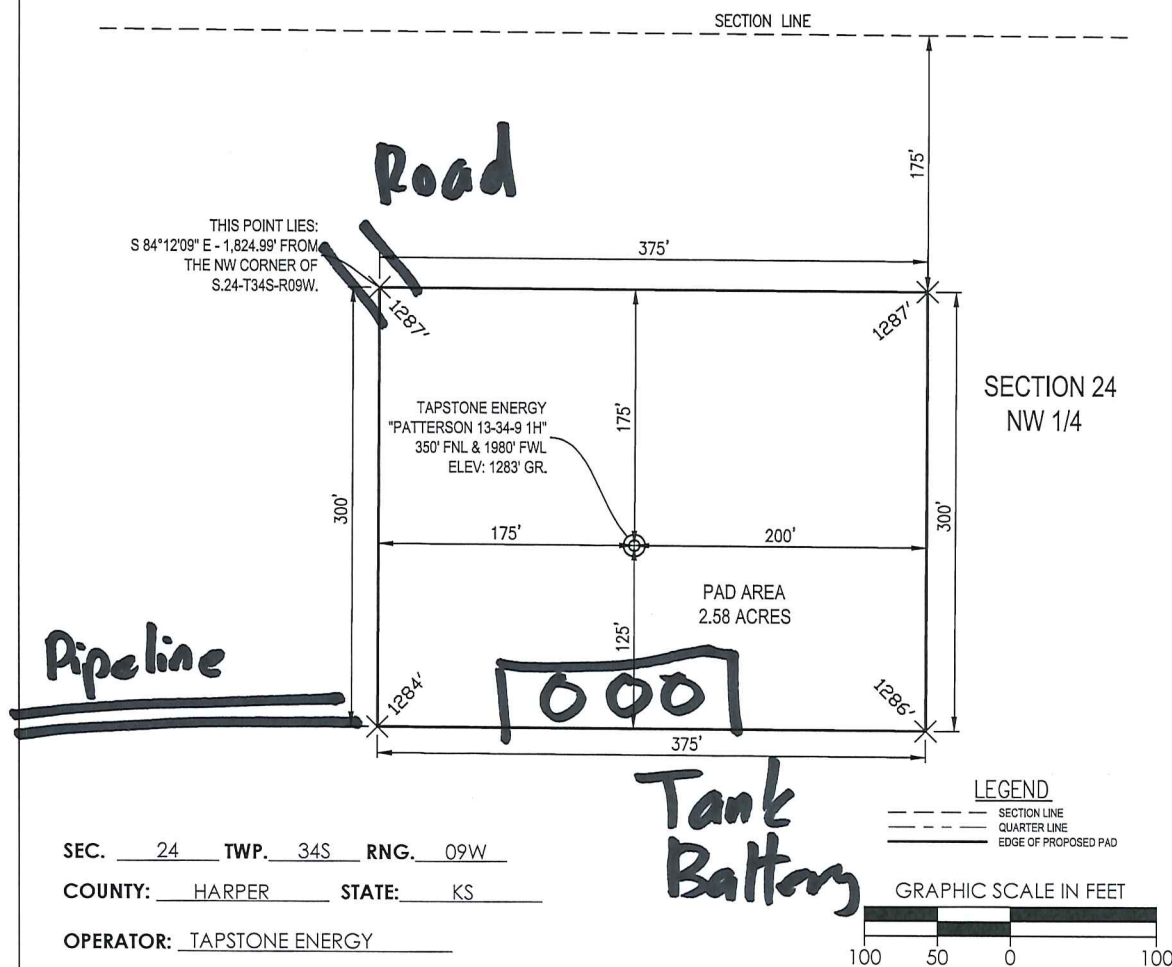
BHL UNIT DESCRIPTION: The South-Half (S/2) and Northeast Quarter (NE/4) and Northeast of the Northwest Quarter (NE/4 NW/4) and South-Half of the Northwest Quarter (S/2 NW/4) of Section 13, Township 34 South, Range 9 West, containing 600 acres more or less, in Harper County, Kansas.



VICINITY MAP
SCALE: 1" = 1000'



THE INFORMATION SHOWN HEREIN IS FOR
CONSTRUCTION PURPOSES ONLY.



REVISION	tapstone ENERGY		
	"PATTERSON 13-34-9 1H" PART OF THE NW 1/4 OF SECTION 24, T-34-S, R-09-W PROPOSED SITE LAYOUT HARPER COUNTY, KANSAS		
	SCALE: 1" = 100'	PLOT DATE: 01-16-2018	DRAWN BY: JWB SHEET NO.: 5 OF 5