

Operator: Downing-Nelson Oil Co., Inc. Elevation: 2367 KB. Lease: Mark Armbrister No. 1-27. API #: 15-195-23034-0000. Production Surface: 8 5/8" @ 221'. Field: Wildcat. Production: 5 1/2" @ 4245'. Location: 2000' FNL & 2560' FEL. Electrical Surveys: CNDL, DIL. Sec. 27, Twp. 13s, Rge. 21w. County: Trego, State: Kansas. Formation, Sample tops, Log Tops, Datum, Struct Comp table. Reference Well For Structural Comparison: Godsey-Earlougher.

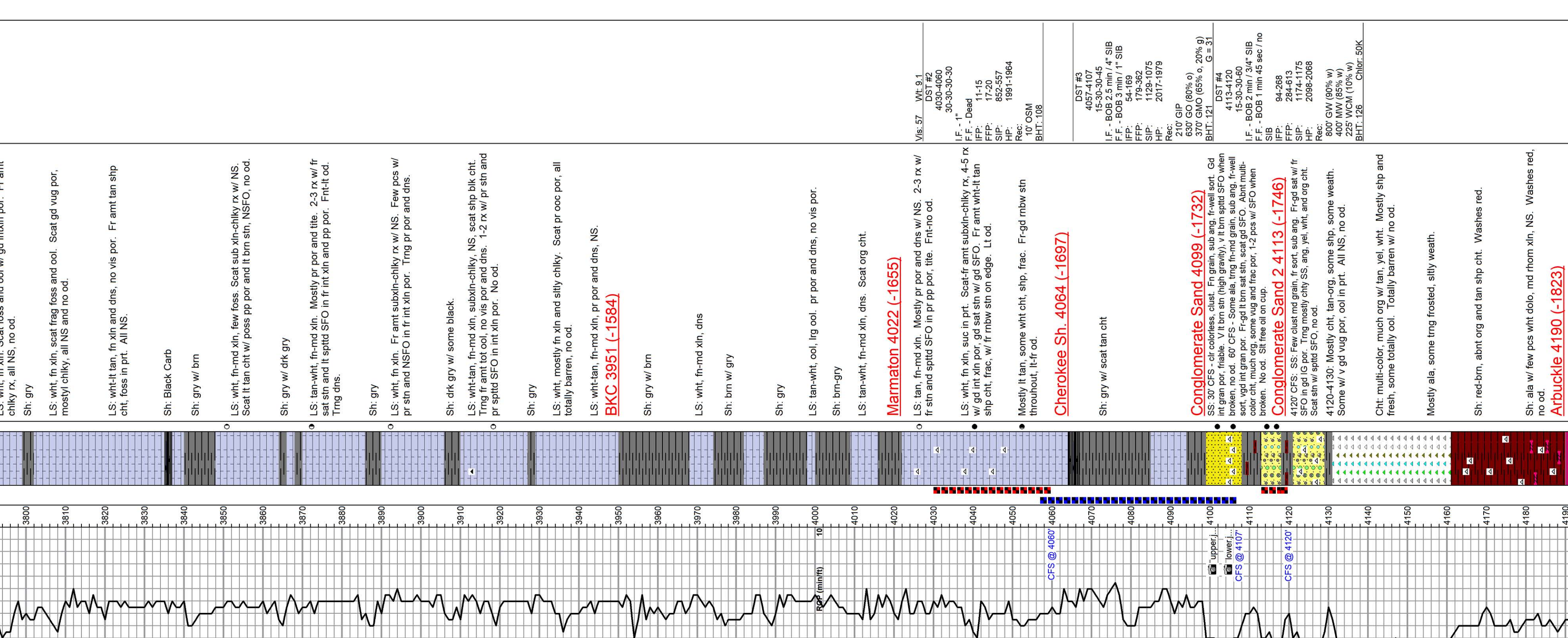
Drilling Contractor: Discover Drilling, Rig #4. Commenced: 1-13-18. Samples Saved From: 3400 To RTD. Drilling Time Kept From: 3300 To RTD. Samples Examined From: 3400 To RTD. Geological Supervision From: 3400 To RTD.

Summary and Recommendations: Due to structural position, DST recovery, and log evaluation, it was decided to set 5 1/2" production casing for completion.

Printed by GEOSTrip V.C. Striplog version 4.0.8.15 (www.grsrl.ca)

ROCK TYPES: shale, red, gray, carbonate. ACCESSORIES: Dolomite, Limestone. OTHER SYMBOLS: DST, MISC. MINERAL: Chert, Dark Chert, White Chert. OIL SHOWS: Even Sh, Spotted Sin, etc.

Geological Descriptions: Sh: drk gry, Sh: gry, LS: tan, fr-md xln, f. f. in prt. Fr por and dns, NS. LS: tan-wht, trng mostly wht. Fr xln, scat gd int xln por, mostly v chiky. Scat foss rx w/ sm vugs, all NS. LS: much ala, many chiky rx, scat shp wht chit, few mtld pcs. All totally barren, no od. Sh: Black Carb. Sh: gry w/ brn. LS: wht, vfn-mic xln, v dns w/ no vis por. Totally barren w/ no od. LS: wht, fr, md xln, some ala. Trng sub xln-chiky, scat wht-tan cht. All NS. Sh: gry. LS: tan, md xln. Scat foss, pr por and dns. Sh: Black Carb. Sh: gry. LS: wht, some fr-vfn xln and chiky. Scat md-lig foss: fr-gd int foss por. Wht-gry foss cht. All NS, no od. Trng pr por and dns. LS: wht, md xln, fr amt chiky rx, scat sm-l-md foss rx w/ fr-gd int foss por. NS, cht ala. Sh: gry. LS: wht-tan, md xln, foss in prt. Many chiky rx, mtld in prt. Scat wht-gry cht, all NS, no od. LS: wht-tan, fr-md xln, fr amt sub xln-chiky rx. Trng mtld w/ sm lrg foss, some fr int foss por. Scat tan and blk cht, all NS and no od. Heebner: 3670 (-1303). Sh: Black Carb. Sh: gry. Toronto: 3692 (-1025). LS: wht, fr-md xln, scat foss. Some fr-gd int xln and vug por, totally barren, no od. Sh: gry. LK: 3706 (-1339). LS: wht-tan, md xln, foss. Fr int foss por, sm vugs. 4-5 rx w/ fr sat sin, fr SFO, silty hvy, no od. LS: wht-tan, fr-md xln, few foss ala, poss carry. Trng dns w/ pr por, NS. Sh: gry. LS: wht-tan, md xln, foss w/ few ool. Fr int foss por, few sm lrg vugs. Fr SFO, hvy. Rx silty tile, vfn-no od. Sh: gry w/ brn. LS: wht-tan, md xln, ool w/ frag foss. Fr int foss por, silty sub xln. Fr sat sin in 1-2 rx, hvy. No od. Sh: gry w/ brn. Sh: gry w/ brn. LS: wht, fr, md xln, foss in prt. 1-2 rx w/ fr int xln por, fr stn and spnt SFO. Rest sub xln-chiky. Frnt od. Sh: gry. LS: wht, fr, md xln. Scat foss and ool w/ gd int xln por. Fr amt chiky rx, all NS, no od. Sh: gry. LS: wht, fr, md xln, scat frag foss and ool. Scat gd vug por, mostly chiky, all NS and no od. LS: wht-tan, fr xln and dns, no vis por. Fr amt tan shp cht, foss in prt. All NS. Sh: Black Carb. Sh: gry w/ brn. LS: wht-tan, fr-md xln, pr por and dns, NS. BKC: 3951 (-1584). Sh: gry w/ brn. LS: wht, fr-md xln, dns. Sh: brn w/ gry. Sh: gry. LS: tan-wht, ool, org ool, pr por and dns, no vis por. Sh: brn-gry. LS: tan-wht, fr-md xln, dns. Scat org cht. Marmaton: 4022 (-1655). LS: tan, fr-md xln. Mostly pr por and dns w/ NS. 2-3 rx w/ fr stn and spnt SFO in pr por, tile. Frnt-no od. LS: wht, fr, md xln, suc in prt. Scat-fr amt sub xln-chiky rx, 4-5 rx w/ gd int xln por, gd sat sin w/ gd SFO. Fr amt wht-ill-tan shp cht, frac, w/ fr mbw stn on edge. Lt od. LS: wht, fr, md xln, suc in prt. Scat-fr amt sub xln-chiky rx, 4-5 rx w/ gd int xln por, gd sat sin w/ gd SFO. Fr amt wht-ill-tan shp cht, frac, w/ fr mbw stn on edge. Lt od. Mostly lt tan, some wht cht, shp, frac. Fr-gd mbw stn throughout, lt-fr od. Cherokee Sh: 4064 (-1697). Sh: gry w/ scat tan cht. Conglomerate Sand 4099 (-1732). Int gran por, med. Fr brn sin (high gran). Fr int spnt SFO when drilled. Fr int spnt SFO in fr int xln and pp por. Frnt-no od. Conglomerate Sand 2 4113 (-1747). Int gran por, med. Fr brn sin (high gran). Fr int spnt SFO when drilled. Fr int spnt SFO in fr int xln and pp por. Frnt-no od. Conglomerate Sand 4190 (-1823). Dolo: wht, md-grs rhom xln. Fr int xln and vug por, totally barren. Much org and tan shp cht. No od. Dolo: wht, md rhom xln. Gd vug por w/ much cht ala. All NS and no od. Dolo: wht, md-grs rhom xln. Fr-fr vug por, tile, all NS. Dolo: wht, md-grs rhom xln. Gd vug por, scat chiky rx. Still much cht ala, some cht trng too. All NS, no od. Dolo, mostly ala, totally barren. RTD 4245 (-1878).



Oil Shows: Even Sh, Spotted Sin, etc. MISC: Daily Report, Digital Photo, Document, Folder, Link, Vertical Log File, Horizontal Log File, Core Log File, Drill Cuttings Rpt. MINERAL: Chert, Dark Chert, White Chert. OIL SHOWS: Even Sh, Spotted Sin, etc.

Miscellaneous notes and symbols: DST, MISC, MINERAL, OIL SHOWS.