



**Fall & Associates**  
Stake and Elevation Service  
P.O. Box 222  
Pretty Prairie, KS. 67570  
785-243-7506

Date 2-15-18

Invoice Number 0213181

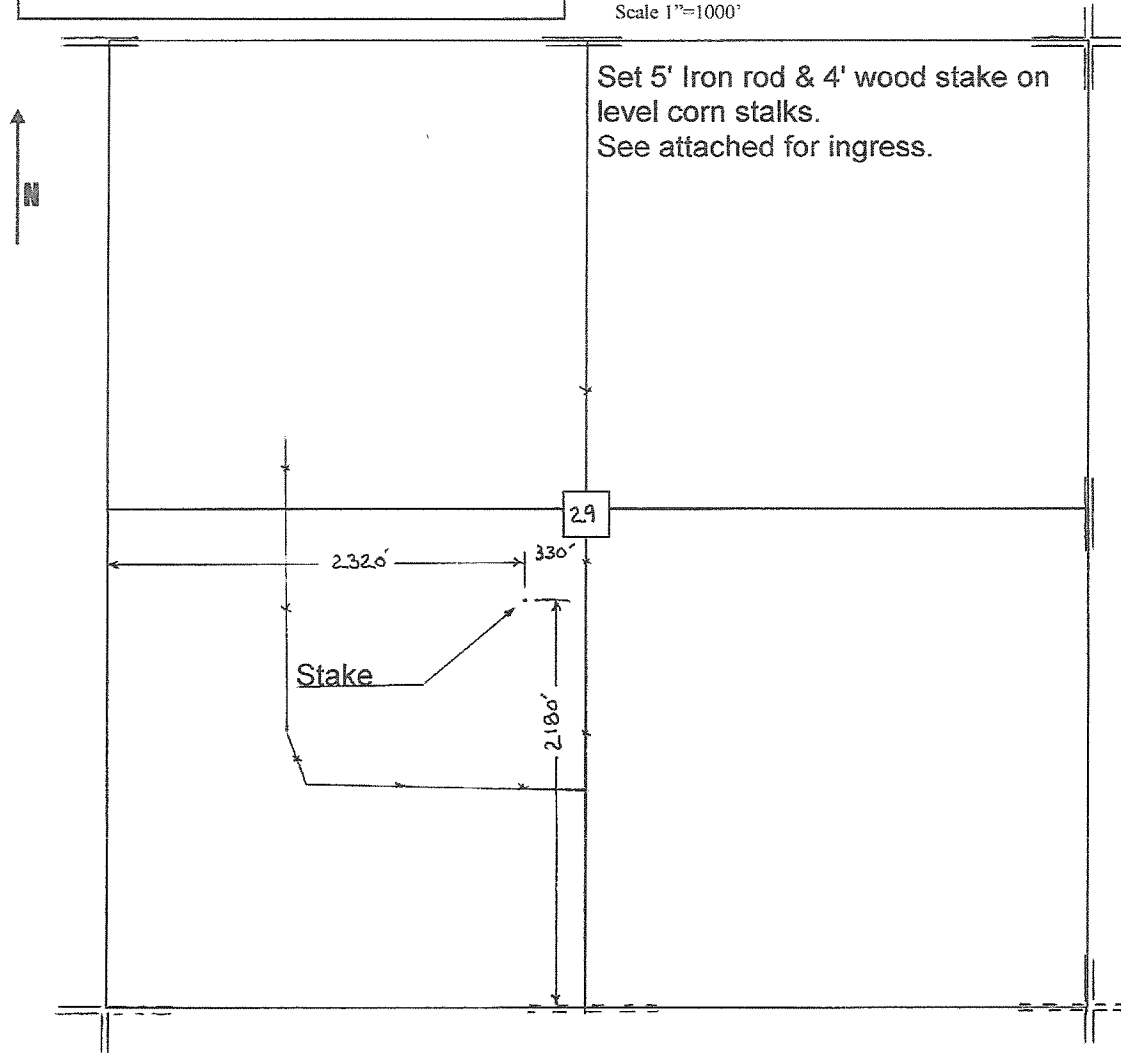
GREAT PLAINS ENERGY	1			Votopka 'A'
Operator	Number			Farm Name
Decatur-KS	29	3s	26w	2180'FSL 2320'FWL
County-State	S	T	R	Location

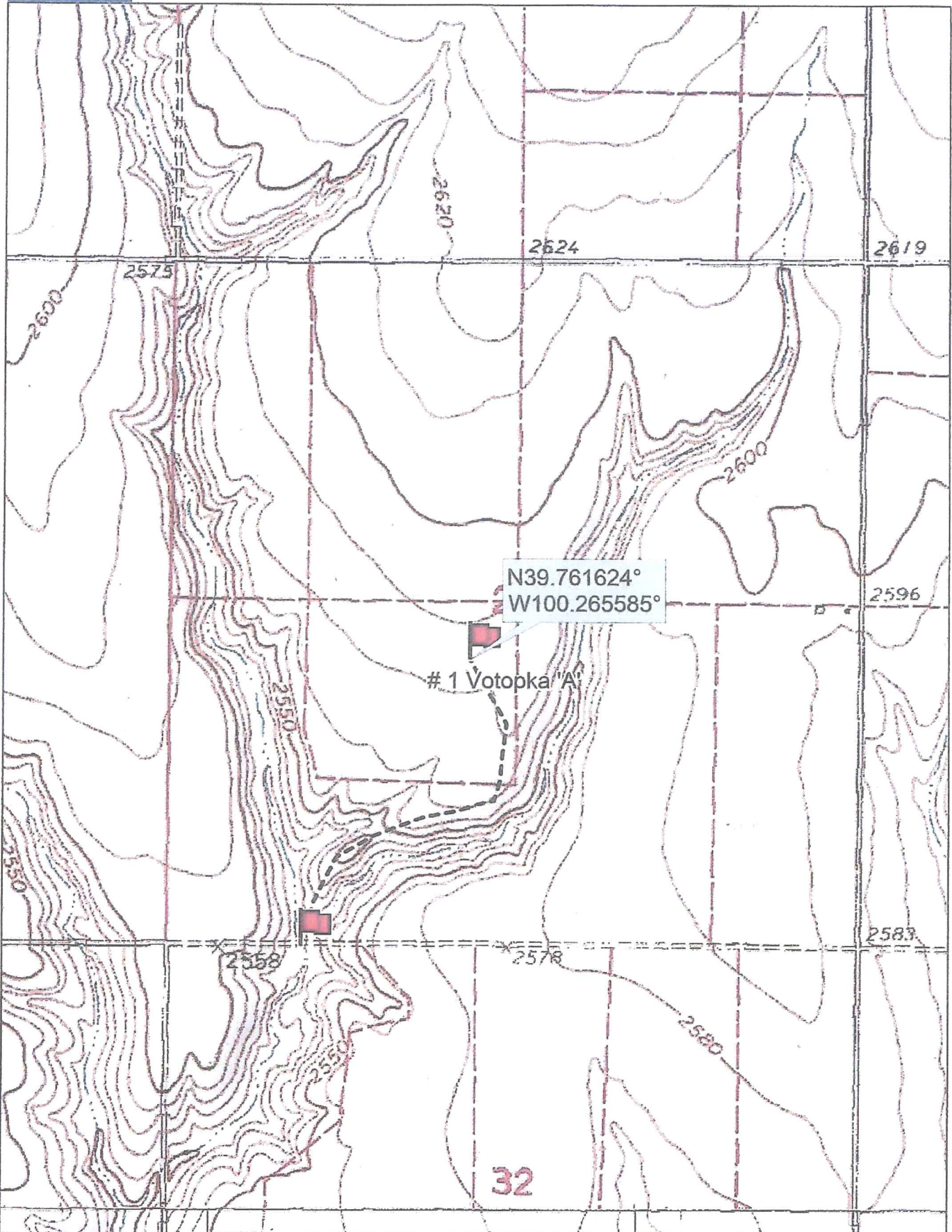
Great Plains Energy  
6121 S 58th Street  
Suite B  
Lincoln, NE. 68516

Elevation 2583 Gr.

Ordered By: Dan

Scale 1"=1000'





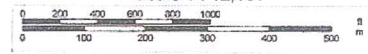
Data use subject to license.

© DeLorme. Topo North America™ 9.

www.delorme.com



Scale 1 : 12,000



1" = 1,000.0 ft

Data Zoom 13-1