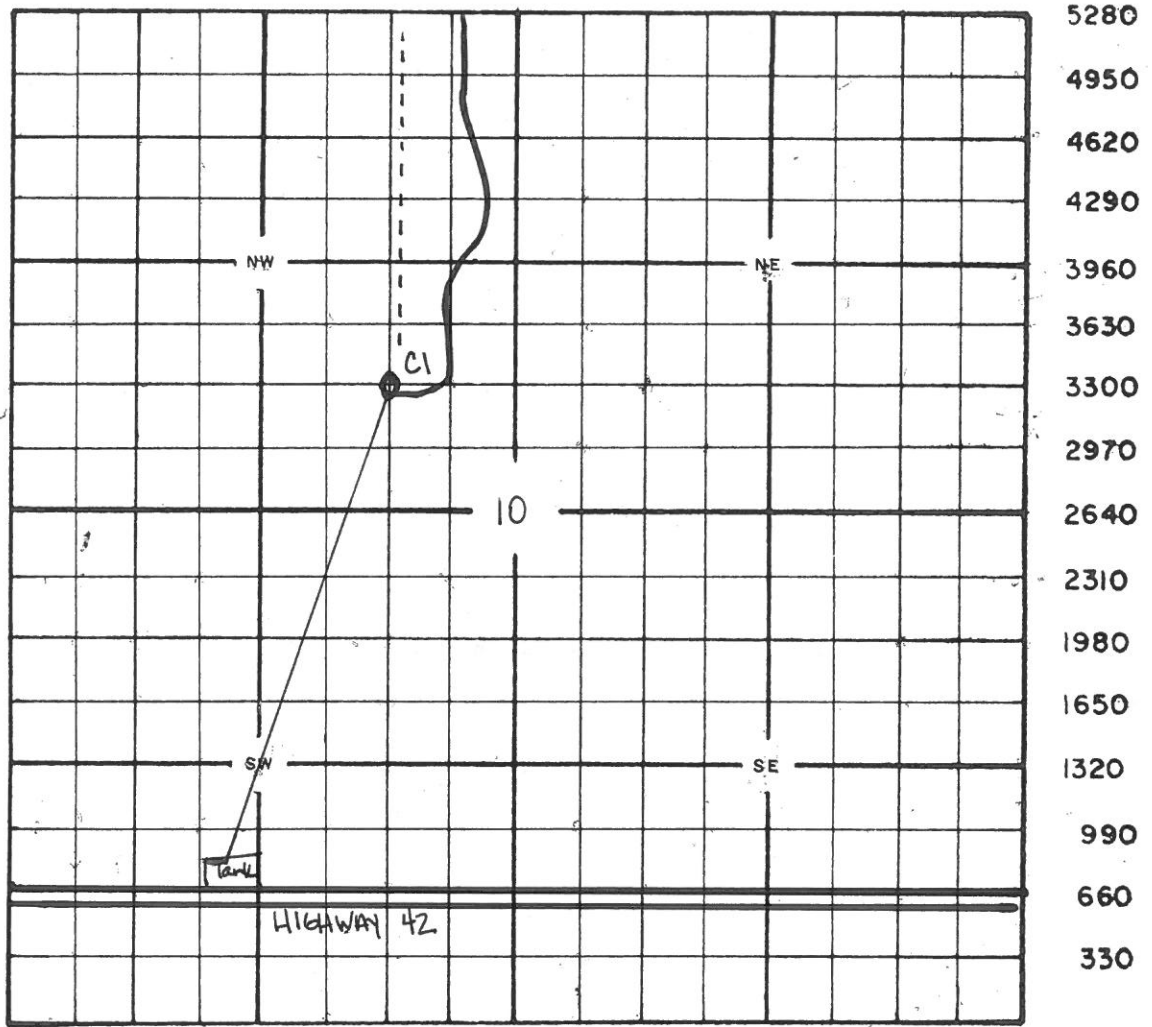
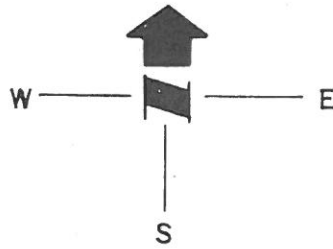


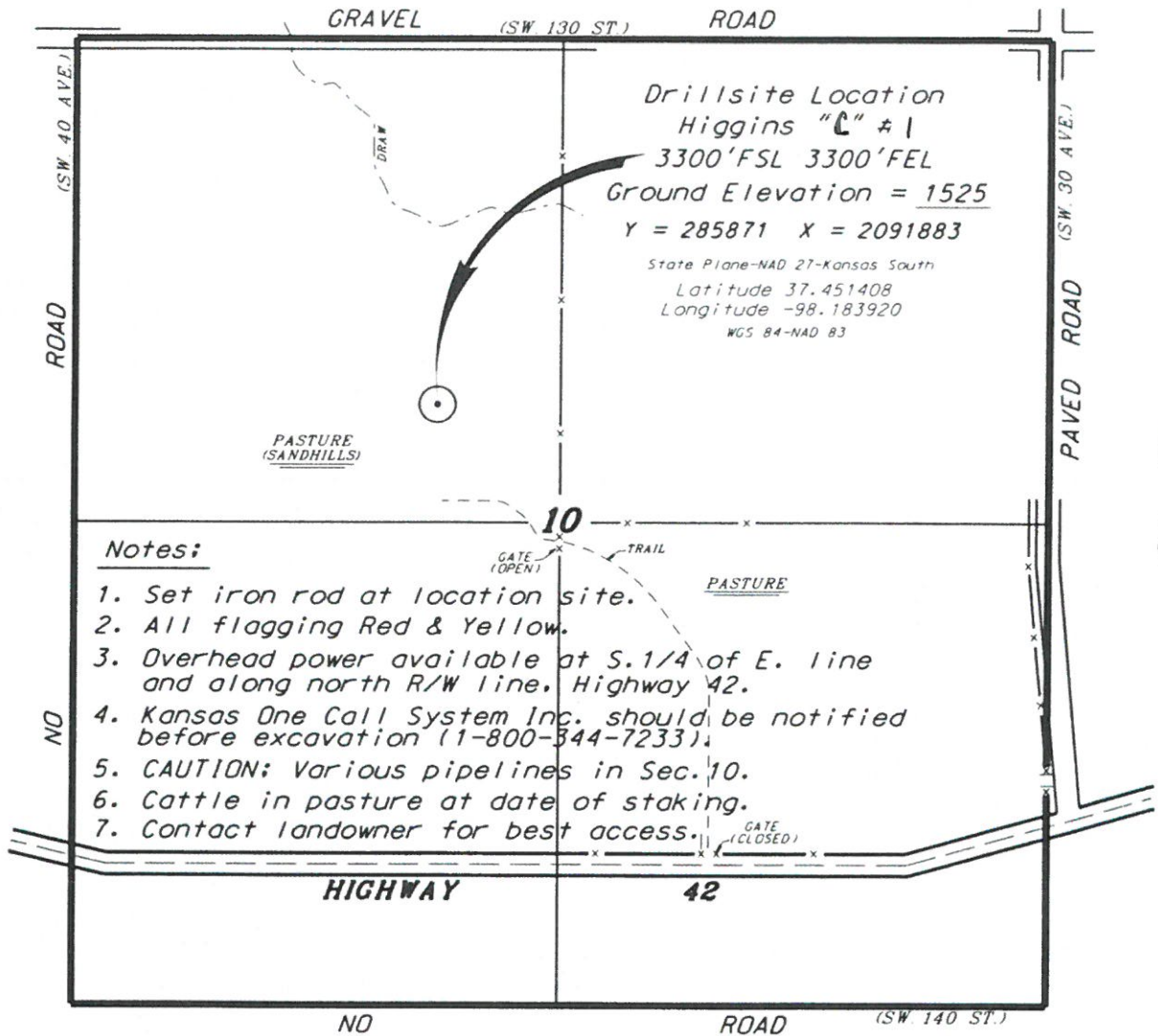
# CENTRAL KANSAS SURVEYING & MAPPING

2344 Washington - Great Bend, Kansas 67530 - (316) 792-5754 or (316) 792-2873

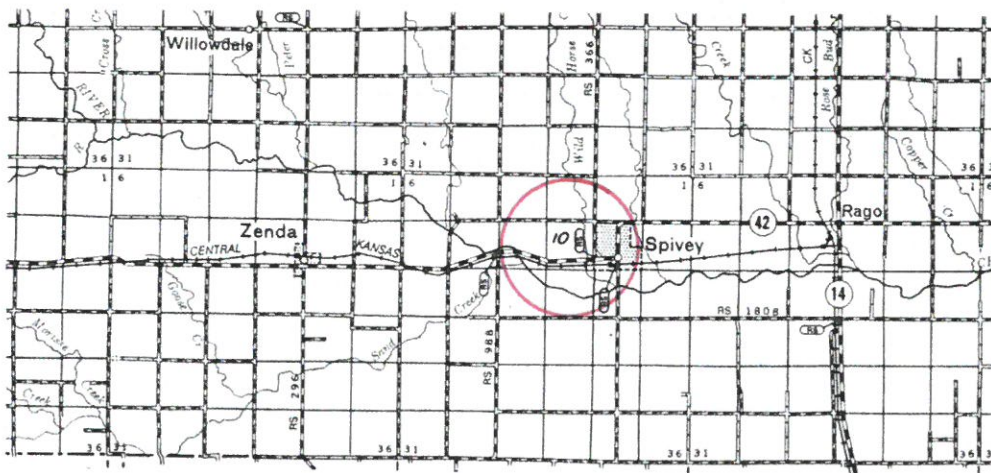


5280  
4950  
4620  
4290  
3960  
3630  
3300  
2970  
2640  
2310  
1980  
1650  
1320  
990  
660  
330

**BEAR PETROLEUM, LLC  
HIGGINS LEASE  
NW. 1/4, SECTION 10, T30S, R8W  
KINGMAN COUNTY, KANSAS**



\* Ingress and egress to location as shown on this plot is per usage only and may not be legally opened for public use. Contact landowner, tenant and county road department for access.

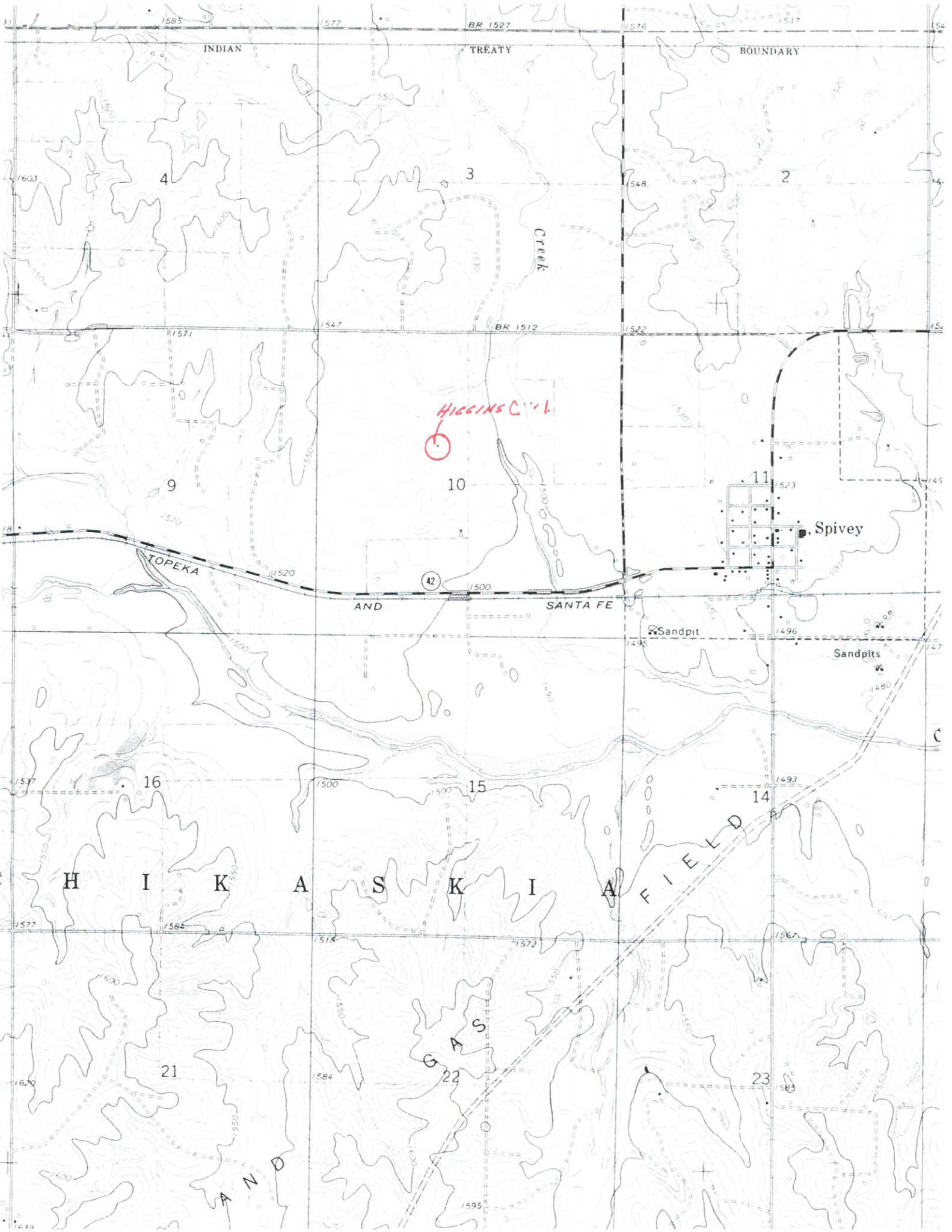


\* Controlling data is based upon the best maps and photographs available to us and upon a regular section of land containing 640 acres.

\* Approximate section lines were determined using the normal standard of care of oilfield surveyors practicing in the state of Kansas. The section corners, which establish the precise section lines, were not necessarily located, and the exact location of the drillsite location in the section is not guaranteed. Therefore, the operator securing this service and accepting this plot and all other parties relying thereon agree to hold Central Kansas Oilfield Services, Inc., its officers and employees harmless from all losses, costs and expenses and said entities released from any liability from incidental or consequential damages.

\* Elevations derived from National Geodetic Vertical Datum.

Date October 31, 2017



INDIAN

TREATY

BOUNDARY

4

3

2

9

10

11

TOPEKA

AND

SANTA FE

Spivey

Sandpit

Sandpits

16

15

14

H

I

K

A

S

K

I

A

F

I

E

L

D

21

22

23

A

N

G

A

S

17