

**ELECTRA LOGGING**

SEC 9 TWP 34 S RGE 8 E  
*Correlation Log*  
*Sonic Cement Bond Log*

CROSSWINDS PETROLEUM, INC

**K.G. STIBRARY**

WELL: JARBOE "B" #1  
 FIELD: CEDARVALE NORTH  
 COUNTY: COWLEY STATE: KANSAS  
 Location: C 1/2 - NW - SW  
 Sec: 9 Twp: 34 S Rge: 8 E

Permanent Datum: Ground level Elev: 973  
 Log Measured From: K. B. Five Fl. Above Perm. Datum  
 Drilling Measured From: Kelly bushing

Elev.: K. B. 978.0  
 D.F. 975.0  
 G.L. 973.0

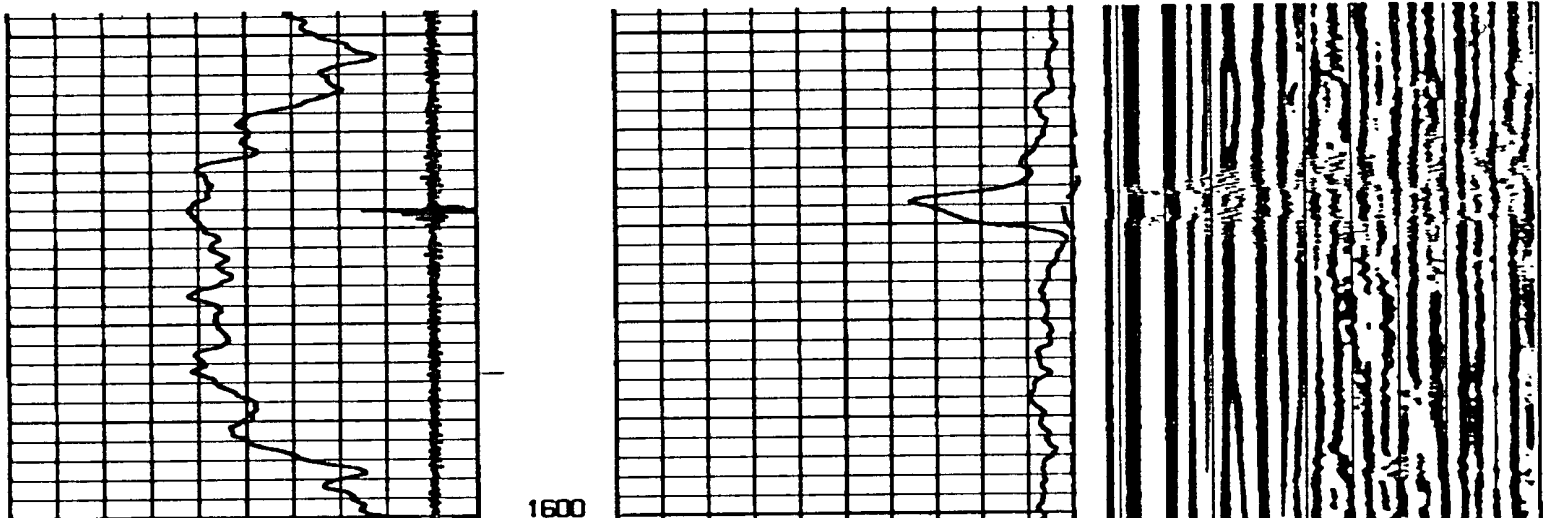
Date	2-7-88	
Run No.	One	
Depth - Driller	2391'	
Depth - Logger	2391'	
Bun. Log Inter.	1550'	
Top Log Inter.	4 1/2"	
Casing - Driller	@	
Casing - Logger	@	
Bit Size	Water	
Type Fluid in Hole		
Dens.	Visc.	
pH	Fluid Loss	
Source of Sample		
Rm @ Meas. Temp.		
Rml @ Meas. Temp.		
Rmc @ Meas. Temp.		
Source: Rml	Rmc	
Rm @ BHT		
Time Since Circ.		
Max. Rec. Temp.		
Equip.	Location	
Recorded By		
Witnessed By		

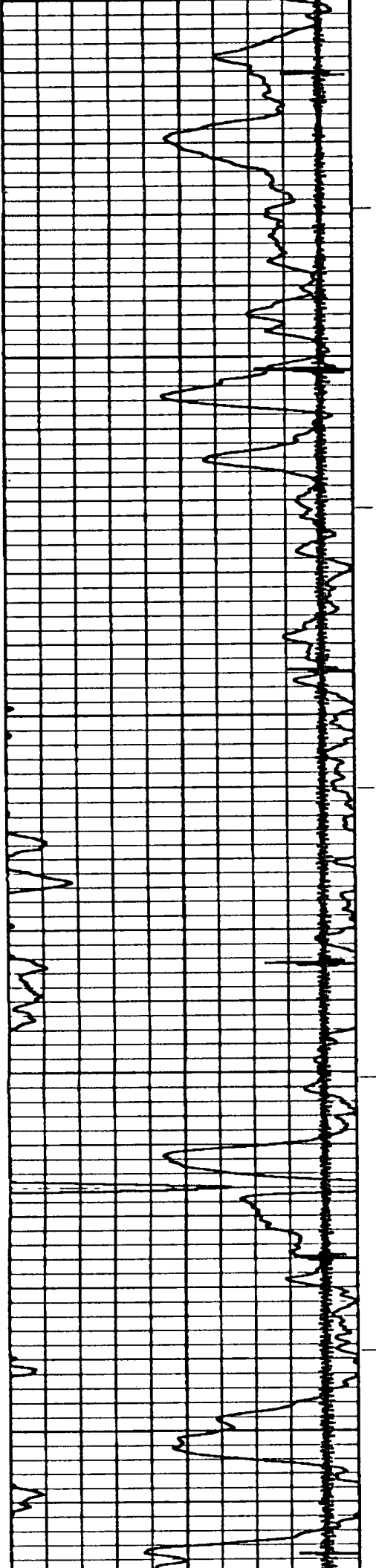
STATE OPERATOR REGISTRATION DIVISION  
 WICHITA, KANSAS

CONSERVATION DIVISION  
 WICHITA, KANSAS

REFERENCE LITERATURE

REMARKS In making interpretations of logs our employees will give Customer the benefit of their best judgment, but since all interpretations are opinions based on inferences from electrical or other measurements, we cannot, and we do not guarantee the accuracy or the correctness of any interpretation. We shall not be liable or responsible for any loss, cost, damages, or expenses whatsoever incurred or sustained by the Customer resulting from any interpretation made by any of our employees

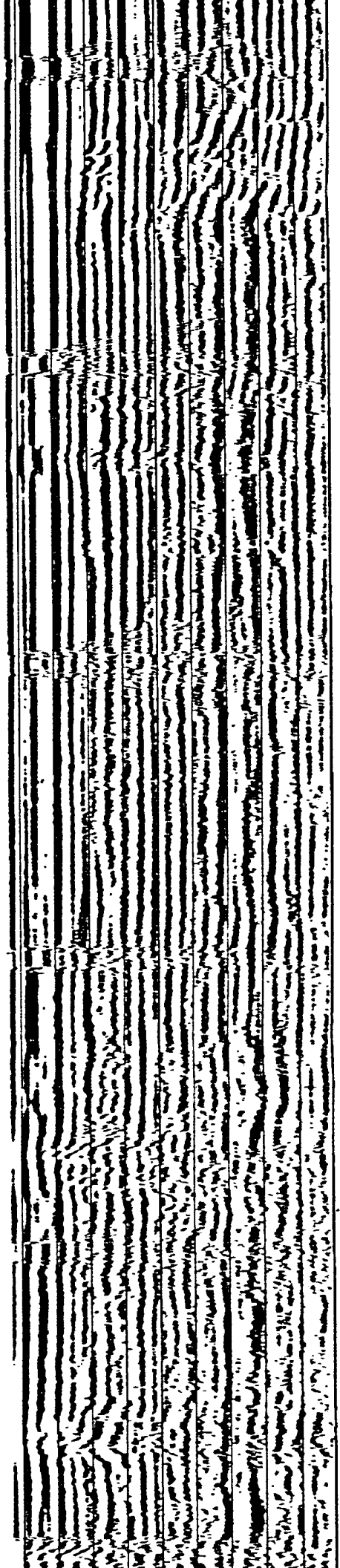


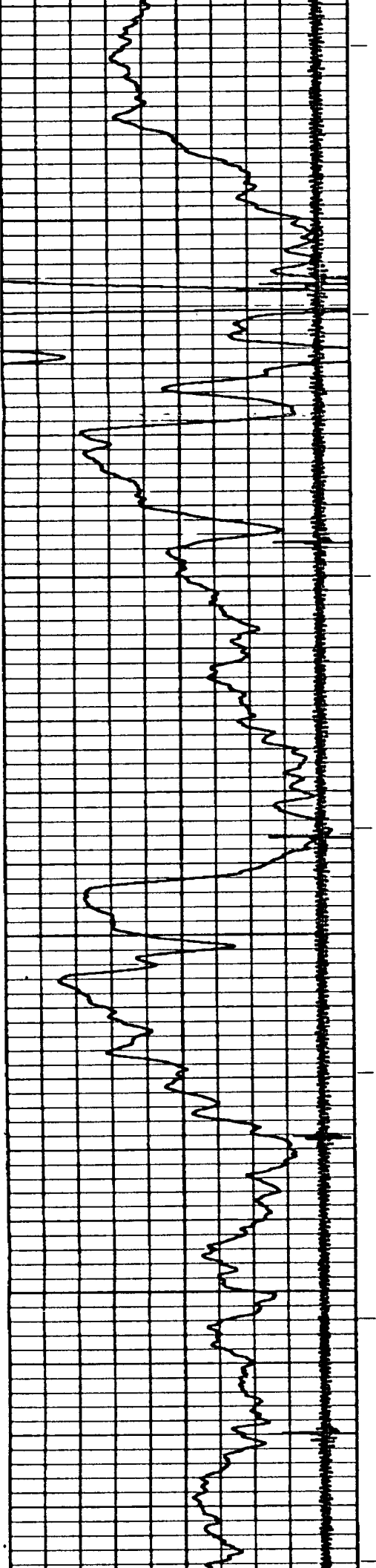


1700



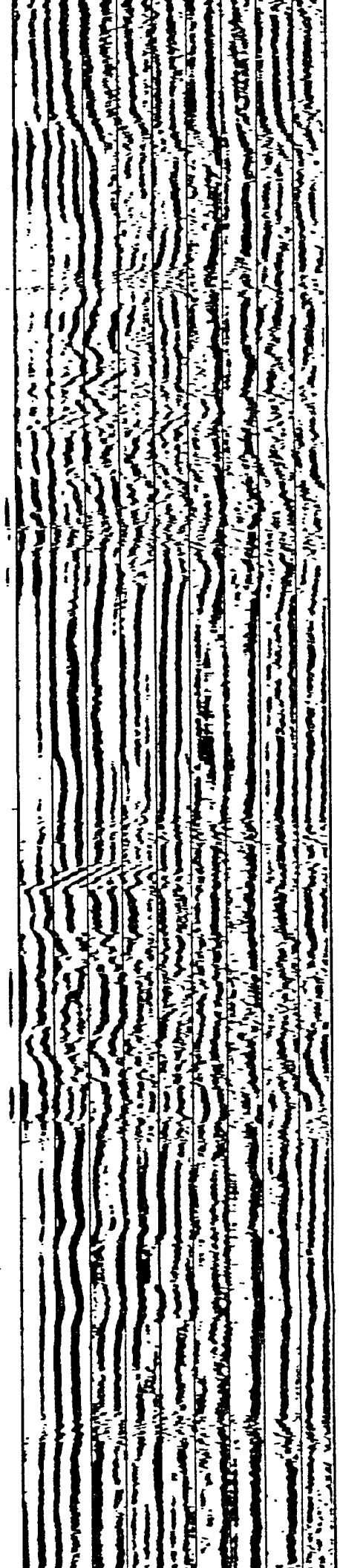
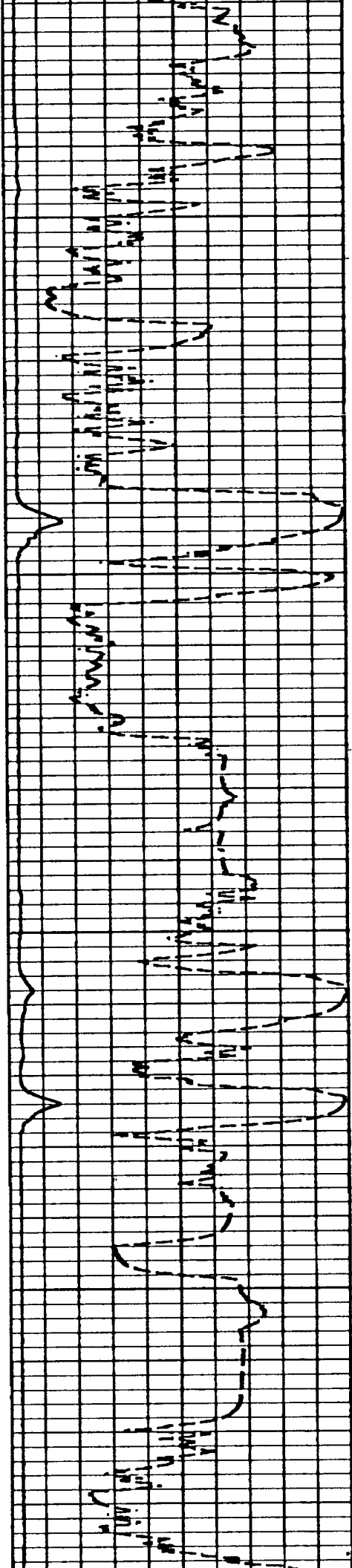
1800

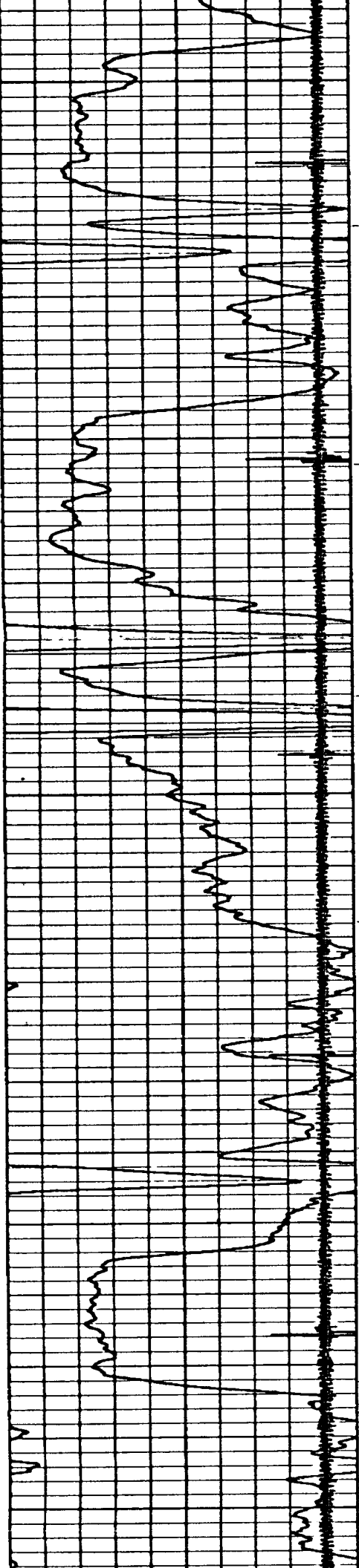




1900

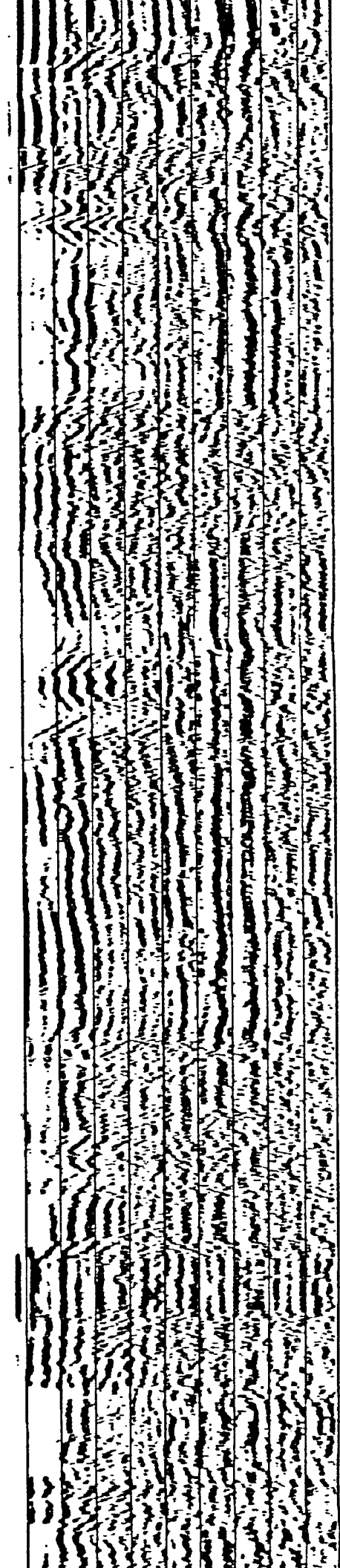
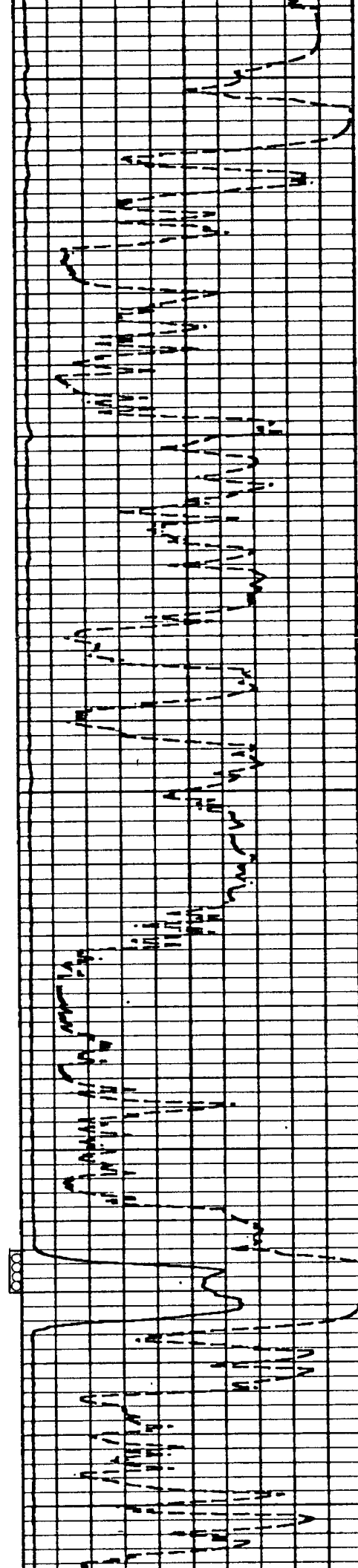
2000

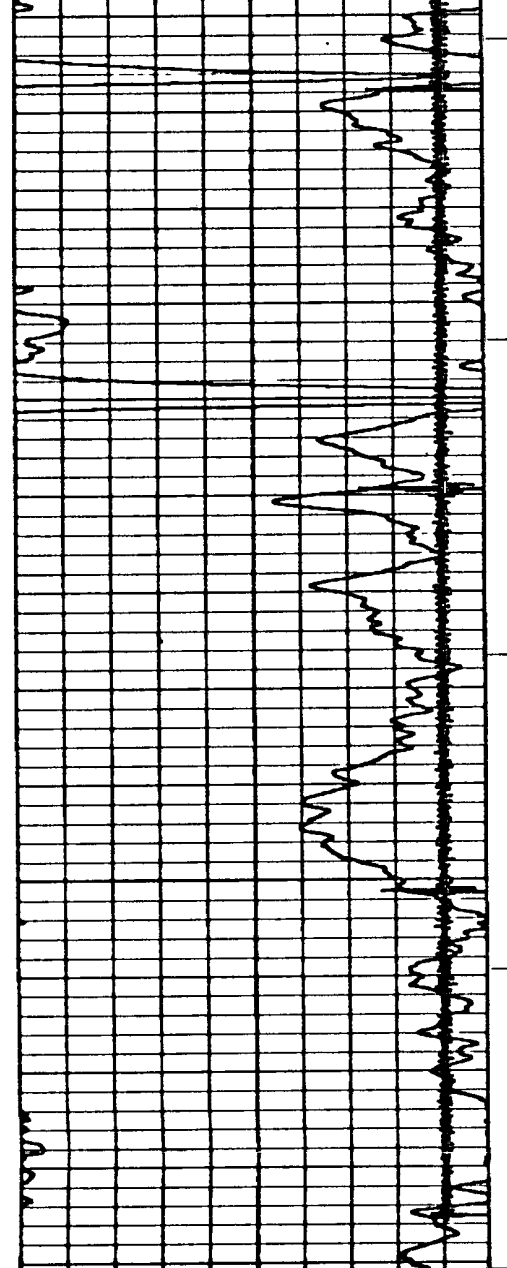




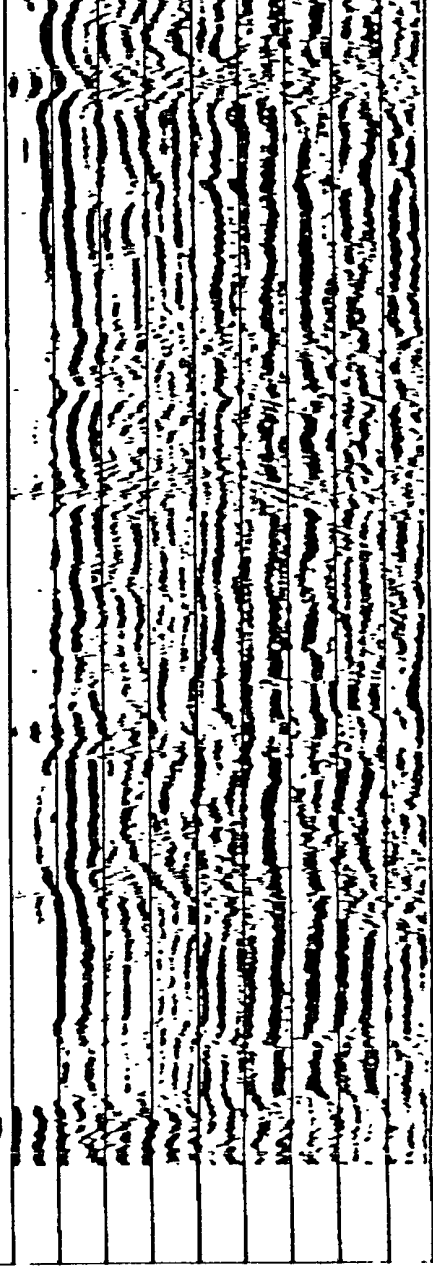
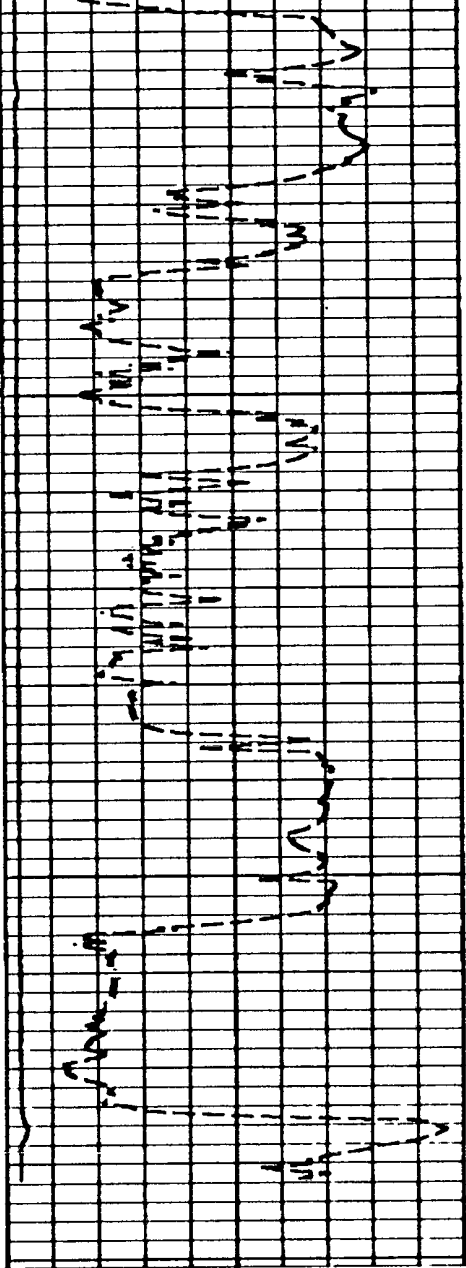
2100

2200





2300



ELECTRA 7.0 2391'