

KANSAS CORPORATION COMMISSION
OIL & GAS CONSERVATION DIVISION

TEMPORARY ABANDONMENT WELL APPLICATION

OPERATOR: License#
Name:
Address 1:
Address 2:
City: State: Zip:
Contact Person:
Phone:
Contact Person Email:
Field Contact Person:
Field Contact Person Phone:

API No. 15-
Spot Description:
Sec. Twp. S. R.
GPS Location: Lat: Long:
Datum: NAD27 NAD83 WGS84
County: Elevation:
Lease Name: Well #:
Well Type: Oil Gas OG WSW Other:
SWD Permit #: ENHR Permit #:
Gas Storage Permit #:
Spud Date: Date Shut-In:

Table with 7 columns: Conductor, Surface, Production, Intermediate, Liner, Tubing. Rows include Size, Setting Depth, Amount of Cement, Top of Cement, Bottom of Cement.

Casing Fluid Level from Surface: How Determined? Date:
Casing Squeeze(s): to w / sacks of cement, to w / sacks of cement. Date:
Do you have a valid Oil & Gas Lease? Yes No
Depth and Type: Junk in Hole at Tools in Hole at Casing Leaks: Yes No Depth of casing leak(s):
Type Completion: ALT. I ALT. II Depth of: DV Tool: w / sacks of cement Port Collar: w / sack of cement
Packer Type: Size: Inch Set at: Feet
Total Depth: Plug Back Depth: Plug Back Method:

Geological Data:

Table with 4 columns: Formation Name, Formation Top, Formation Base, Completion Information. Rows 1 and 2.

UNDER PENALTY OF PERJURY I HEREBY ATTEST THAT THE INFORMATION CONTAINED HEREIN IS TRUE AND CORRECT TO THE BEST OF MY KNOWLEDGE

Submitted Electronically

Do NOT Write in This Space - KCC USE ONLY
Date Tested: Results: Date Plugged: Date Repaired: Date Put Back in Service:
Review Completed by: Comments:
TA Approved: Yes Denied Date:

Mail to the Appropriate KCC Conservation Office:

Map of Kansas with 4 numbered districts. Table with 2 columns: Office Address, Phone Number. Rows 1-4.

General

Well ID 126374
 Well Cronin A-1
 Company Sandridge Energy
 Operator - * -
 Lease Name Cronin A-1
 Elevation 2121.00 ft
 Production Method Other
 Dataset Description

Comment

Surface Unit

Manufacturer - * -
 Unit Class Conventional
 Unit API Number - * -
 Measured Stroke Length - * - in
 Rotation CW
 Counter Balance Effect (Weights Level) - * - Klb
 Weight Of Counter Weights 2000 lb

Prime Mover

Motor Type Electric
 Rated HP - * - HP
 Run Time 24 hr/day
 MFG/Comment - * -

Electric Motor Parameters

Rated Full Load AMPS - * -
 Rated Full Load RPM - * -
 Synchronous RPM 1200
 Voltage - * -
 Hertz 60
 Phase 3
 Power Consumption 5
 Power Demand 8 \$/KW

Tubulars

Tubing OD 2.375 in
 Casing OD 4.500 in
 Average Joint Length 31.700 ft
 Anchor Depth - * - ft
 Kelly Bushing 9.00 ft

Pump

Plunger Diameter - * - in
 Pump Intake Depth 5150.00 ft
 **Total Rod Length < Pump Depth

Polished Rod

Polished Rod Diameter - * - in

Rod String

	Top Taper	Taper 2	Taper 3	Taper 4	Taper 5	Taper 6
Rod Type	- * -	- * -	- * -	- * -	- * -	- * -
Rod Length	- * -	- * -	- * -	- * -	- * -	- * - ft
Rod Diameter	- * -	- * -	- * -	- * -	- * -	- * - in
Rod Weight	0.0	0.0	0.0	0.0	0.0	0.0 lb

Total Rod Length 0
 Total Rod Weight 0.00

Damp Up 0.05
 Damp Down 0.05

Conditions

Pressure

Static BHP 834.4 psi (g)
 Static BHP Method Acoustic
 Static BHP Date 03/06/2018

Producing BHP - * - psi (g)
 Producing BHP Method - * -
 Producing BHP Date - * -
 Formation Depth 5363.00 ft

Surface Producing Pressures

Tubing Pressure - * - psi (g)
 Casing Pressure 666.6 psi (g)

Casing Pressure Buildup

Change in Pressure 0.560 psi
 Over Change in Time 1.75 min

Production

Oil Production 0 BBL/D
 Water Production 1 BBL/D
 Gas Production - * - Mscf/D
 Production Date 03/05/2018

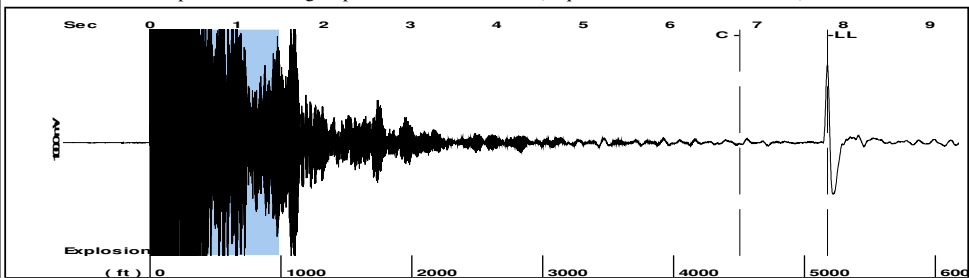
Temperatures

Surface Temperature 70 deg F
 Bottomhole Temperature 150 deg F

Fluid Properties

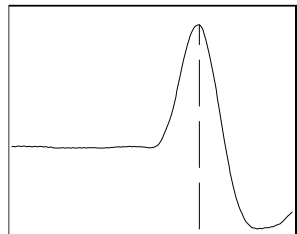
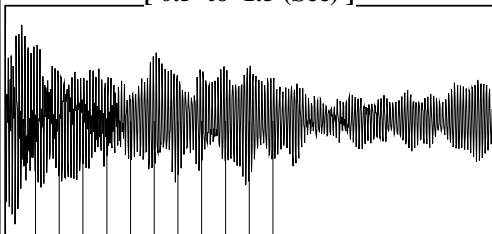
Oil API 40 deg.API
 Water Specific Gravity 1.05 Sp.Gr.H2O

Group: 2018 Sandridge Gp 2 Well: Cronin A-1 (acquired on: 03/06/18 13:36:00)



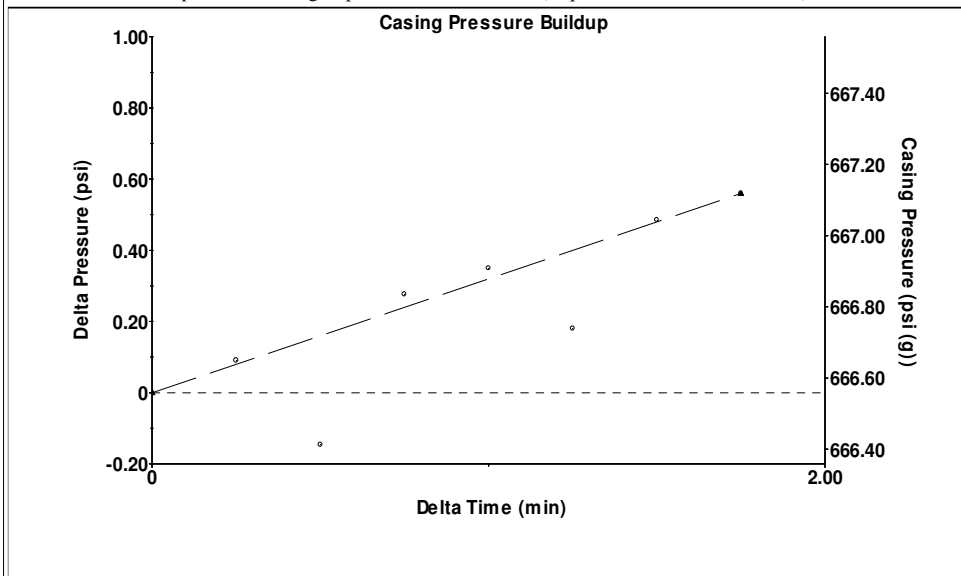
Filter Type High Pass Automatic Collar Count Yes Time 7.82 sec
Manual Acoustic Veloc 1299.18 ft/s Manual JTS/sec 20.4918 Joints 163.314 Jts
Depth 5177.05 ft

[0.5 to 1.5 (Sec)]



Analysis Method: Automatic

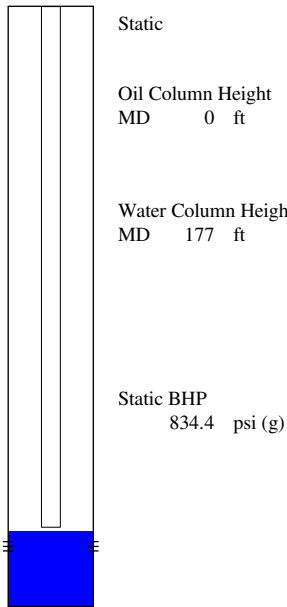
Group: 2018 Sandridge Gp 2 Well: Cronin A-1 (acquired on: 03/06/18 13:36:00)



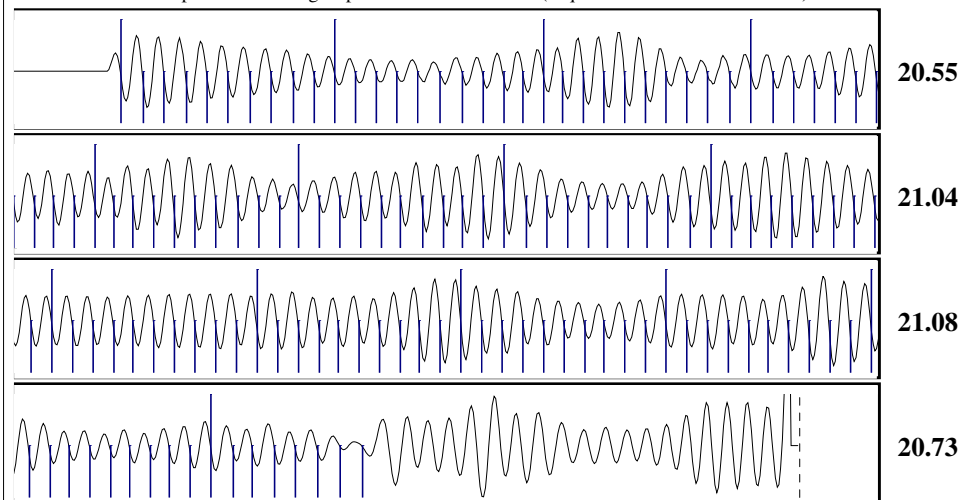
Change in Pressure 0.56 psi PT16722
Change in Time 1.75 min Range 0 - ? psi

Group: 2018 Sandridge Gp 2 Well: Cronin A-1 (acquired on: 03/06/18 13:36:00)

Production Current	Potential	Casing Pressure
Oil 0	- * - BBL/D	666.6 psi (g)
Water 1	- * - BBL/D	Casing Pressure Buildup
Gas - * -	- * - Mscf/D	0.560 psi
		1.75 min
IPR Method	Vogel	Gas/Liquid Interface Pressure
PBHP/SBHP	- * -	753.9 psi (g)
Production Efficiency	0.0	
Oil 40 deg.API		Liquid Level Depth
Water 1.05 Sp.Gr.H2O		5177.05 ft
Gas 0.64 Sp.Gr.AIR		Tubing Intake Depth
		5150.00 ft
Acoustic Velocity	1324.05 ft/s	Formation Depth
		5363.00 ft



Group: 2018 Sandridge Gp 2 Well: Cronin A-1 (acquired on: 03/06/18 13:36:00)



Acoustic Velocity	1324.05 ft/s	Joints counted	137
Joints Per Second	20.8841 jts/sec	Joints to liquid level	163.314
Depth to liquid level	5177.05 ft	Filter Width	18.4918 22.4918
Automatic Collar Count	Yes	Time to 1st Collar	0.248 6.808

STATE OF KANSAS

CORPORATION COMMISSION
CONSERVATION DIVISION
DISTRICT OFFICE No. 1
210 E. FRONTVIEW, SUITE A
DODGE CITY, KS 67801



PHONE: 620-682-7933
<http://kcc.ks.gov/>

GOVERNOR JEFF COLYER, M.D.
SHARI FEIST ALBRECHT, CHAIR | JAY SCOTT EMLER, COMMISSIONER | PAT APPLE, COMMISSIONER

March 13, 2018

Laci Bevans
SandRidge Exploration and Production LLC
123 ROBERT S. KERR AVE
OKLAHOMA CITY, OK 73102-6406

Re: Temporary Abandonment
API 15-033-21105-00-00
CRONIN A 1
NE/4 Sec.31-32S-18W
Comanche County, Kansas

Dear Laci Bevans:

"Your temporary abandonment (TA) application for the well listed above has been approved. In accordance with K.A.R. 82-3-111 the TA status of this well will expire 03/13/2019.

- * If you return this well to service or plug it, please notify the District Office.
- * If you sell this well you are required to file a Transfer of Operator form, T-1.
- * If the well will remain temporarily abandoned, you must submit a new TA application, CP-111, before 03/13/2019.

You may contact me at the number above if you have questions.

Very truly yours,

Michael Maier"